



Welcome!

Illinois Route 131 (IL Rte. 131) Green Bay Road Project From Russell Road to Sunset Avenue

Public Information Meeting

Beach Park Middle School

Wednesday, October 29, 2008



Illinois Department
of Transportation

www.IL131Project.com



The Illinois Department of Transportation (IDOT) welcomes you to this public meeting for the potential improvement of Illinois Route 131 / Green Bay Road from Russell Road to Sunset Avenue.



Meeting Purpose

- **Background of Study Area**
- **Identify Study Team Members**
- **Study Process and Project Schedule**
- **Next Steps**
- **Opportunities for Involvement**



Illinois Department
of Transportation

www.IL131Project.com



The purpose of tonight's meeting is to provide a background for the study area, identify study team members, introduce the study process and project schedule, discuss next steps, and explain opportunities for your involvement.



Project Location

- Gurnee
- Waukegan
- Beach Park
- Wadsworth
- Zion
- Winthrop Harbor
- Pleasant Prairie

IL Rte. 131 is designated as an SRA Route



Illinois Department
of Transportation

www.IL131Project.com



The study area is located in Lake County extending approximately 7.5 miles from Russell Road to Sunset Avenue. The corridor is developed with a mix of residential, commercial, and agricultural uses, forest preserve, golf courses and the Waukegan Regional Airport. The study area includes six communities: Winthrop Harbor, Zion, Wadsworth, Beach Park, Waukegan, and Gurnee, which are experiencing rapid growth with much of the agricultural area zoned for residential or commercial development.

IL 131 is a designated Strategic Regional Arterial (SRA) and is intended to supplement the existing and proposed expressway facilities by accommodating a significant portion of long-distance, high-volume automobile and commercial vehicle traffic in the region. Although some research and guidelines have been identified in the past through the SRA Corridor Study, the study represented conceptual planning and did not include detailed engineering or an environmental assessment.



Study Elements

- **Phase I Engineering and Environmental Study**
- **Environmental Assessment**
- **Analysis of Drainage & Intersections**
- **Safety and Capacity Improvements**
- **Examination of Impacts on Communities & Environment**
- **Kenosha Road at IL 131 Potential Realignment**
- **Assess Impact of Signalizing Key Intersections**



www.IL131Project.com



IDOT has initiated a Phase I Engineering and Environmental Study for IL Rte. 131. The project will follow the National Environmental Protection Act (NEPA) process and encourage extensive public involvement throughout the development process. The IL Rte. 131 Phase I Study will prepare an Environmental Assessment (EA) and will include an analysis of the two lane rural roadway, drainage, intersection deficiencies, safety and capacity improvements, and an examination of the impacts that potential proposed improvements will have on the communities and the environment. In addition, the study will determine feasible alternatives for the potential realignment of Kenosha Road at its intersection with IL Rte.131. The study will also assess the impact of signalizing key intersections along the project corridor.



Phase I Process

- **3 – 4 Years to Complete**
- **Analyzing Existing & Future Conditions**
- **Defining Purpose & Need**
- **Alternatives Analysis**
- **Assess Environmental Consequences**
- **Preferred Alternative**
- **Draft/Final Environmental Assessment**



Illinois Department
of Transportation

www.IL131Project.com



The study process is expected to take 3 - 4 years to complete and will follow IDOT's Phase I process. Extensive public involvement will be encouraged throughout the development process. There are a number of steps to complete the process which includes:

- Analyzing existing and future conditions
- Defining Purpose & Need
- Alternatives Analysis
- Assess Environmental Consequences
- Preferred Alternative
- Draft/Final Environmental Assessment

This project is not included in the Department's Fiscal Year 2009 to 2014 Proposed Highway Improvement Program, but will be considered in future programs based on funding availability and project readiness.



Stakeholder Input

- **A Stakeholder is any person or organization which has a direct stake in the project being considered.**
- **They can include residents, landowners, advocates, community/historic interests, elected officials, and government agencies.**



**IDOT wants
your input!**



www.IL131Project.com



You are here tonight because you are a project stakeholder. A stakeholder for a project is defined as any person or organization which has a direct stake in the project being considered. Stakeholders can include residents and landowners near a project, advocates for policy, community and historic interests, elected officials, government agencies, and many others. People who are affected by the project every day will have valuable input on its goals and considerations, and this is why IDOT is actively seeking your comments and ideas.



What is CSS?

- Collaborative Approach
- Involves all Stakeholders
- Fits into its Surroundings
- Preserve Scenic, Aesthetic, Historic, & Environmental
- Maintain Safety & Mobility

Consensus is defined as a majority of the stakeholders in agreement, with the minority agreeing that their input was duly considered. All final decisions rest with IDOT.



www.IL131Project.com



A vital element of our study effort is a broad-based public involvement program. This study will follow IDOT's guiding principles of Context Sensitive Solutions (CSS), which provides meaningful opportunities for all interested stakeholders and the public at large to participate in defining transportation issues and solutions for this project.

CSS is a collaborative approach that involves all stakeholders to develop a facility that fits into its surroundings and preserve scenic, aesthetic, historic, and environmental resources while maintaining safety and mobility. The purpose of CSS is to gather and duly consider input on the project from all stakeholders. We are looking forward to working with all communities, agencies, and interested parties to develop a comprehensive transportation system that fits into its surroundings and that will benefit the project stakeholders and the entire region. IDOT will be seeking consensus throughout the study process. Consensus is defined as a majority of the stakeholders in agreement, with the minority agreeing that their input was duly considered. IDOT is the agency responsible for the safety and integrity of the state transportation system. As such, there will be considerations which can not be compromised. There will be many different stakeholders for each project; each will have differing views and interests. Although conflict resolution is a tool to resolve these differences, IDOT is held ultimately responsible and therefore makes the final decision.



CSS Process

- **Are there safety concerns along IL Rte. 131?**
- **Does traffic move freely or is there congestion?**
- **Is bicycle or pedestrian mobility important?**
- **Are there cultural, aesthetic, or community characteristics that should influence the design?**
- **How will land use influence improvements?**
- **What environmental features are important?**



www.IL131Project.com

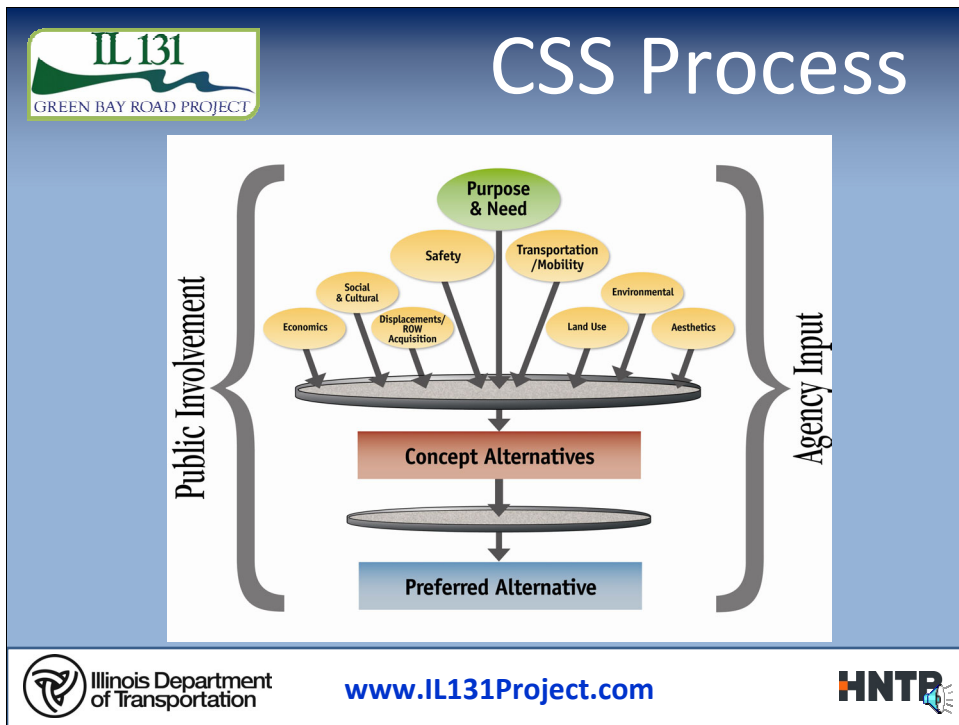


The CSS process begins with input from stakeholders and collaboration with IDOT in order to formulate the project's purpose and need. After you view the exhibits that are on display, please fill out a Comment Sheet. We would like your opinion on what you feel are important considerations for the project.

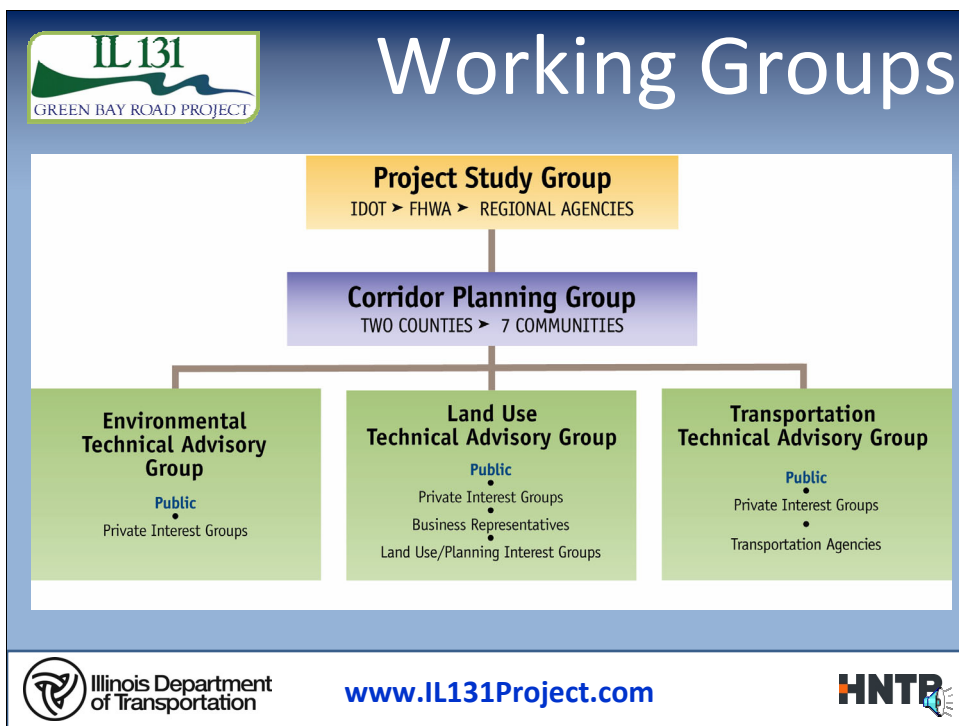
Questions you should ask yourself when thinking of project considerations:

- Is IL 131 safe as it presently exists?
- Does traffic move freely, or are there areas of congestion?
- Is bicycle or pedestrian mobility important to you?
- Are there any cultural, aesthetic, or community characteristics along the route that should influence the design?
- How will the existing land use influence potential improvements?
- What environmental features (such as wetlands and waterways) are important to you?

We will use your input to develop a Purpose and Need Statement for the transportation improvements, and also consider the goals and objectives of others for potential solutions.



The following considerations will be used to determine the project's concept alternatives: Social & Cultural, Economic, Safety, Land Use, Aesthetic, Environmental, Transportation & Mobility, and Displacement & ROW Acquisition. The Concept Alternatives are developed by the stakeholders and IDOT to address the project's purpose and need. The stakeholders and IDOT will work together to make changes and modifications to the Concept Alternatives which will then be filtered to a more refined concept and modified into the Preferred Alternative / Recommended Improvement.



IDOT realizes that feedback from potentially affected communities is important to ensuring that IDOT proposals are consistent with community goals and objectives. To provide a forum for discussions of details about potential improvements of IL Rte. 131, IDOT is forming a Corridor Planning Group. This Group will include elected officials or their designees from Lake County and the six municipalities located along the corridor.

The Corridor Planning Group is supported by the Technical Advisory Groups, whose members are selected from transportation and land use planning agencies, economic development councils, forest preserve district, environmental conservation groups, and other civic groups. The Advisory Group members will have experience and knowledge of local issues related to transportation, environmental resources, and land use planning.

The Corridor Planning Group and supporting technical groups interact with the Project Study Group for discussions about the project needs, potential impacts, and community responses to proposed ideas. When the group raises issues or has suggestions, IDOT and the project team will work hard to accommodate the request or reduce the impact. Consensus will be achieved. Often this results in changes that could provide a good solution for all parties.



Working Groups

- **You are welcome to join any of the Technical Advisory Groups:**
 - **Environmental**
 - **Land Use**
 - **Transportation**
- **Meet throughout the Project Development Process**
- **Provides opportunities to share your input**
- **May meet up to nine times during the study**



Illinois Department
of Transportation

www.IL131Project.com

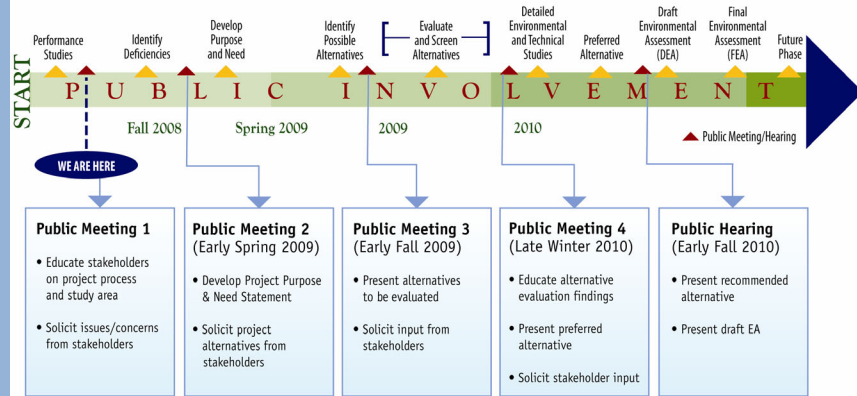


IDOT has initiated a Phase I Engineering and Environmental Study for IL Rte. 131. The project will follow the National Environmental Protection Act (NEPA) process and encourage extensive public involvement throughout the development process. The IL Rte. 131 Phase I Study will prepare an Environmental Assessment (EA) and will include an analysis of the two lane rural roadway, drainage, intersection deficiencies, safety and capacity improvements, and an examination of the impacts that potential proposed improvements will have on the communities and the environment. In addition, the study will determine feasible alternatives for the potential realignment of Kenosha Road at its intersection with IL Rte.131. The study will also assess the impact of signalizing key intersections along the project corridor.



Project Schedule

Project Schedule



www.IL131Project.com



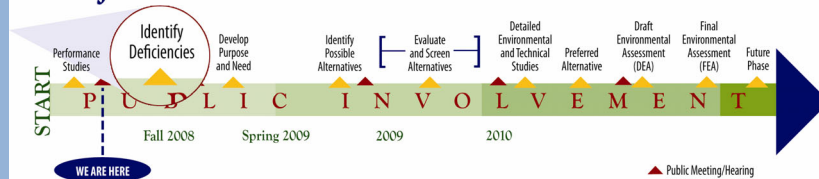
The project schedule has been developed which show primary tasks and time frames for future public meetings. We are currently in the first step of the Phase I Study. This includes: analyzing the existing and future conditions, and defining the Purpose and Need for improvements.

The tasks include collecting information on current population, employment and traffic conditions; developing geographic information systems to organize and display the data; forecasting future population and employment growth in the area; predicting future travel demand, and evaluating the performance of the transportation system under future conditions.



Next Steps

Project Schedule



www.IL131Project.com



Over the next 3 or 4 months, we are going to define existing and future transportation needs in the study area and deficiencies will be established. The study then proceeds to develop the specific purpose of improvements and the needs that will be addressed. Several additional tasks will be completed before any consideration is given to defining any solutions.



Opportunities

- **Newsletters**
- **Sign up for Mailing List**
- **Join Technical Advisory Group**
- **Invite us to Speak at Your Event!**
- **Public Meetings**



www.IL131Project.com



Public Involvement is an interactive process that provides information to the public so they may make informed decisions and offer important input into the solutions that address the community's concerns. A public involvement program has been designed to encourage your participation throughout the study.

-Public Involvement Opportunities Include:

-Newsletters

-Sign up for mailing list

-Be a Member of one of the Technical Advisory Groups

-Invite us to speak at your event!

-And Future Public Meetings

Newsletters, workshops and public meetings will coincide with key project milestones throughout the duration of the project. If you cannot attend an outreach event, up-to-date information is available at the project website.



Be sure to visit the website at www.IL131Project.com.

The website will serve as the central hub of communication throughout the project. It will include news and informational materials, as well as links to sign up for the mailing list and express concerns and ideas.



We Want to Hear from YOU!

- **View Exhibits**
- **Place Comments on Aerial Maps**
- **Talk with Study Team Members**
- **Fill out Comment Form**
 - **Drop in Comment Box**
 - **Or Mail In**
- **Post Comments to website: www.IL131Project.com**



Illinois Department
of Transportation

www.IL131Project.com



Again, our purpose for being here today is to find out from you what the current and future needs and conditions are along the corridor. We also want to understand your goals and objectives for this study area. At this time, we invite you to view the exhibits on display and include your comments on the aerials, talk with a study team member, and write us your questions or thoughts on the project comment form.



**Thank you for taking an active
role in the planning process!**

WORKING TOGETHER...

Creating a Plan for Your Community



Illinois Department
of Transportation

www.IL131Project.com



Thank you again for taking an active role in the planning process and working with us in creating a plan for your community!