



U.S. 20 Ramps Elgin, IL

April 25, 2024

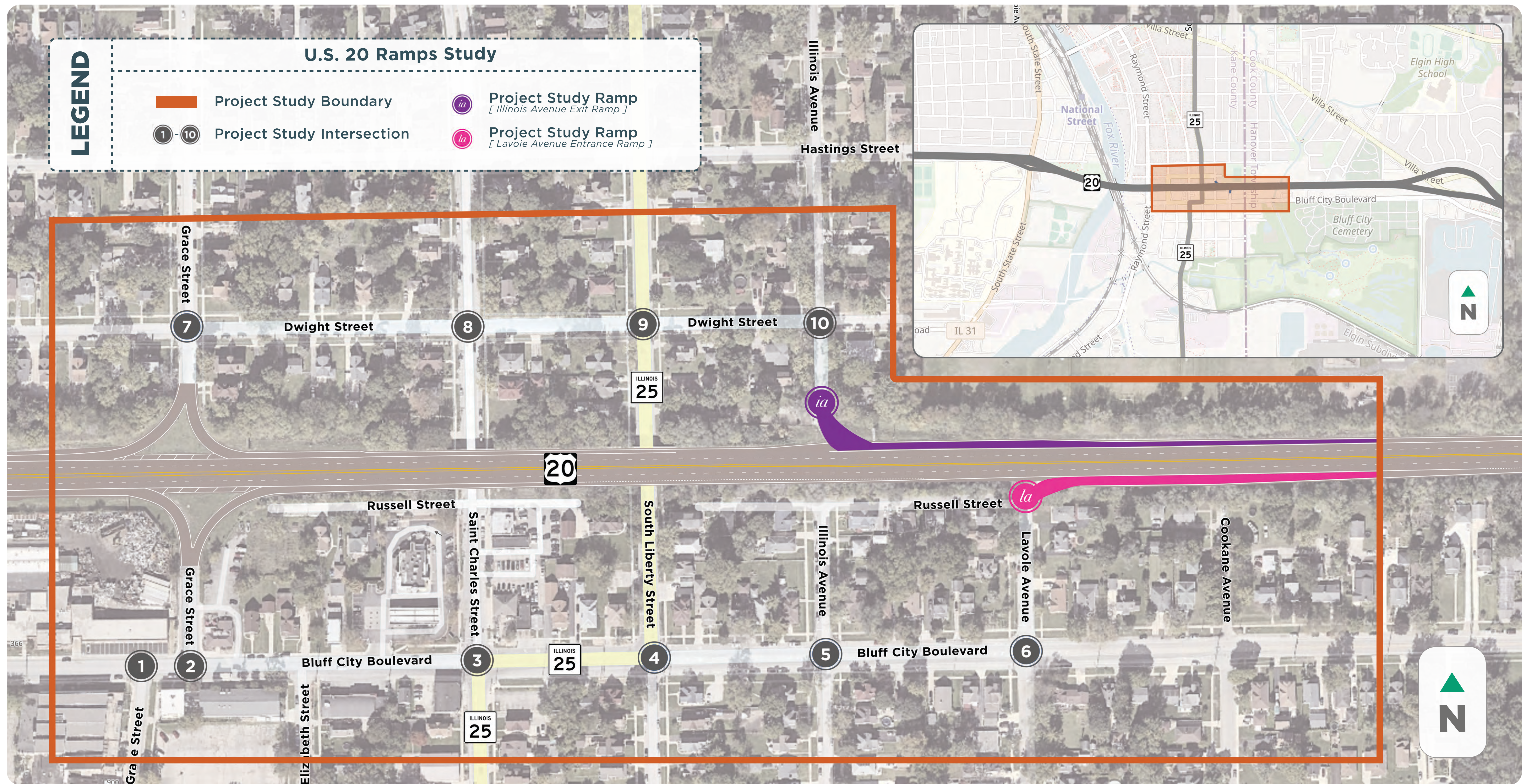
WELCOME

Please Sign In

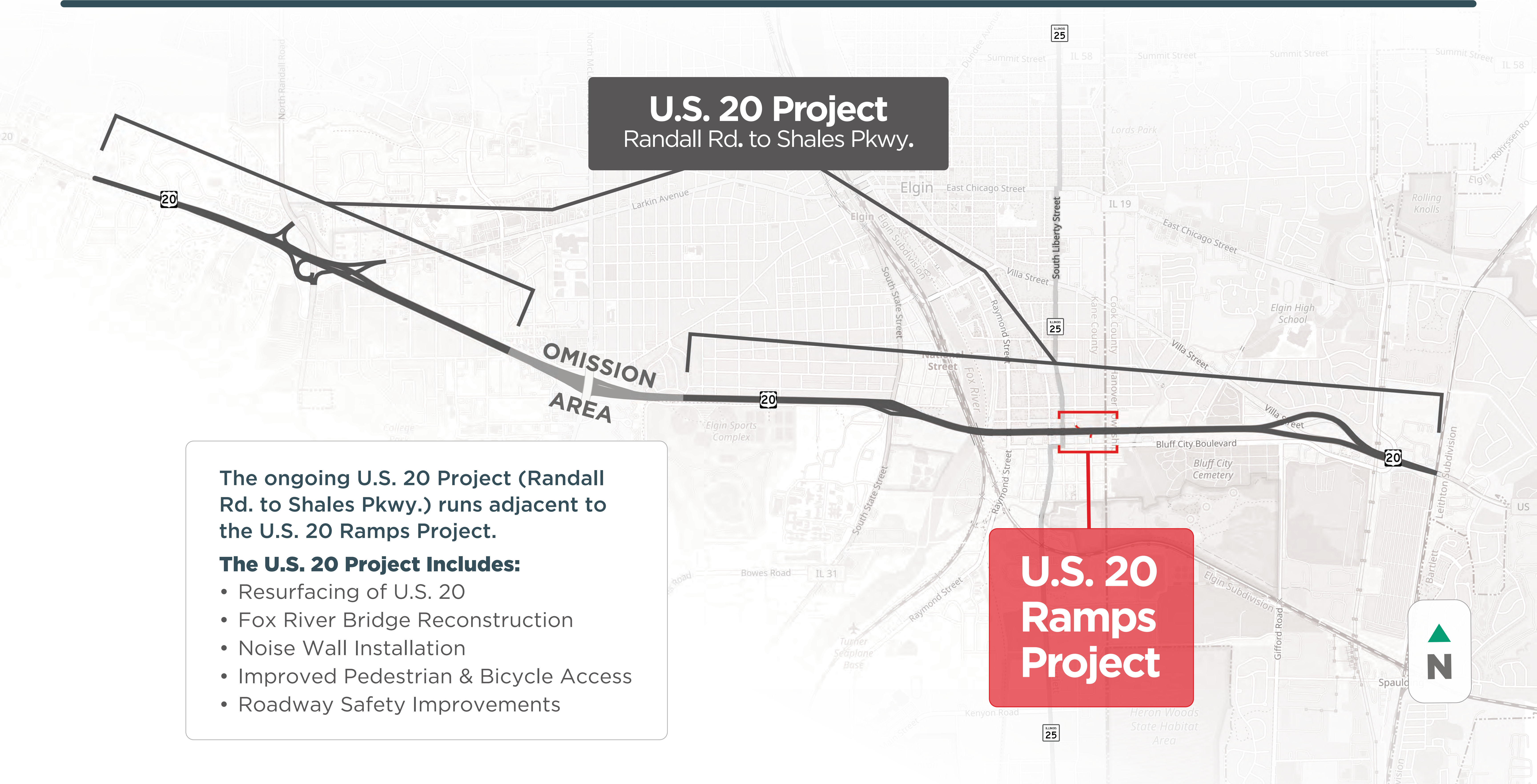


Illinois Department
of Transportation

20 Location Map



U.S. 20 Project Overview



U.S. 20 Project
Randall Rd. to Shales Pkwy.

U.S. 20 Ramps Project

The ongoing U.S. 20 Project (Randall Rd. to Shales Pkwy.) runs adjacent to the U.S. 20 Ramps Project.

The U.S. 20 Project Includes:

- Resurfacing of U.S. 20
- Fox River Bridge Reconstruction
- Noise Wall Installation
- Improved Pedestrian & Bicycle Access
- Roadway Safety Improvements

Why is this Project Occurring?

Safety Concerns

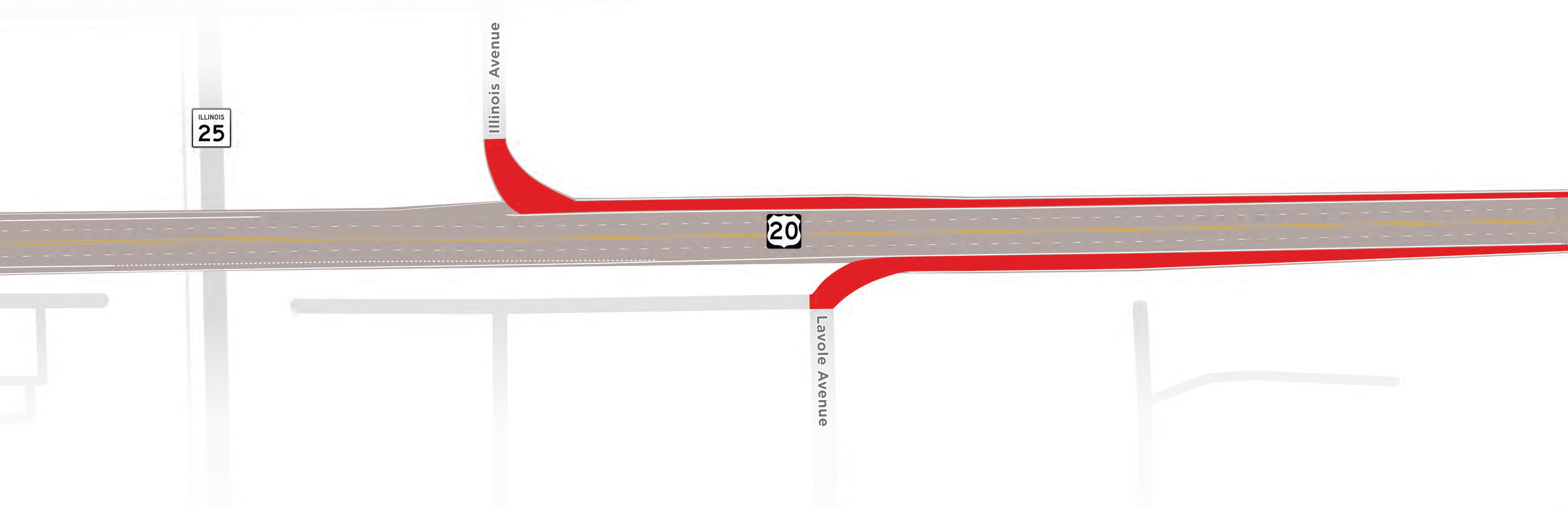
- Several crashes at Illinois Avenue ramp
- Lavoie Avenue ramp confusion
- Inadequate space for exiting and entering U.S. 20
[See Video On The Screen]

Project Support

Legislative and public support to study the impacts of closing Illinois Avenue



Purpose & Need Statement



The **purpose** of this project is to develop roadway improvements in conjunction with the permanent closure of the U.S. 20 Illinois Avenue and Lavoie Avenue ramps.

The **need** for this project is to improve safety by addressing deficiencies in the existing roadway infrastructure.

20 Project Timeline

Phase I

Preliminary Engineering & Environmental Studies

- ✓ Define Existing Conditions
- ✓ Identify & Evaluate Alternatives
- Review Recommended Alternatives

2023 - 2024

Current Phase

Phase II

Contract Plan Preparation

2024 - 2025

Phase III

Construction

2025 - 2026

DATES ARE SUBJECT TO CHANGE

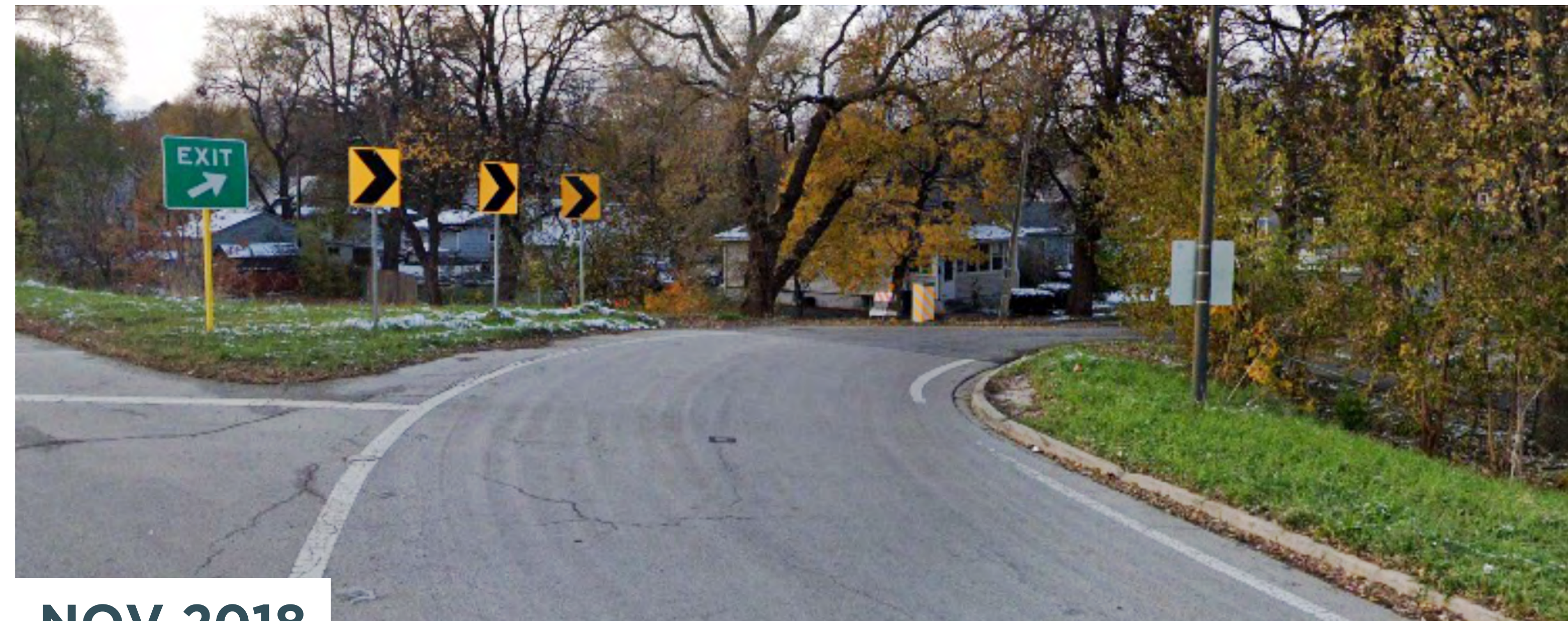
What Is Analyzed In This Phase?

- **Traffic Volumes & Patterns**
- **Safety & Crash Data**
- **Drainage Requirements**
- **Compatibility with U.S. 20 Project (Randall Rd. to Shales Pkwy.) Improvements**
- **Existing & Planned Utilities**
- **Social & Community Impacts**
- **Environmental Constraints**
- **Stakeholder & Public Input**

Recent Improvements - Illinois Avenue

- Speed reduction for exit ramp from 20 mph to 15 mph
- Signage updates
- Refreshed pavement markings
- Trimming adjacent vegetation

Crashes are still occurring even with recent safety improvements.



NOV 2018



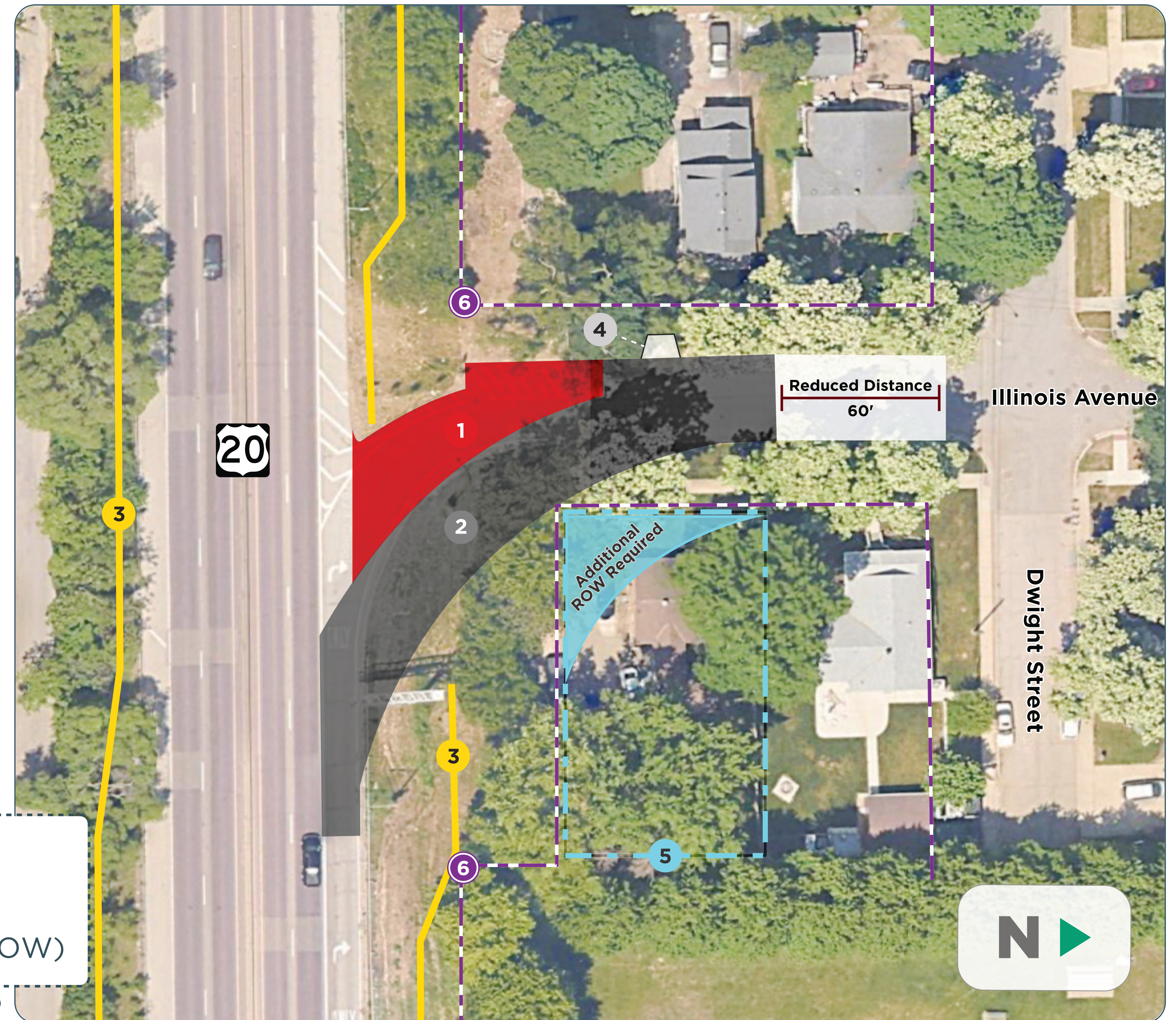
AUG 2023

20 Evaluated Improvements - Illinois Avenue

This alternative proposes to reconstruct the ramp & eliminate the existing sharp curve.

Concerns With This Alternative

- 1. Property Entrance** Access to the existing driveway must be maintained within the ramp curve. The entrance location poses a safety concern for vehicles accessing the ramp and driveway.
- 2. Property Impact** The additional right-of-way (ROW) needed would require acquisition of the house located east of the ramp.
- 3. Reduced Distance** There would be limited spacing for drivers exiting the ramp to reduce their speed and safely turn onto Dwight Street.
- 4. Driver Behavior** Drivers may continue to ignore the posted advisory speed and not reduce their vehicle speed to safely exit the ramp.



LEGEND

1 Pavement Removal	4 Property Entrance
2 Ramp Improvement	5 Property Impacted
3 Noise Wall*	6 Existing Right-Of-Way (ROW)

* Part of the U.S. 20 Project (Randall Rd. to Shales Pkwy.)

20 Concept Designs

Interim Safety Improvements

Ramps will remain open during reconstruction of the Grace Street ramps included in the U.S. 20 Project (Randall Rd. to Shales Pkwy.).

Interim improvements will provide additional safety measures prior to the closure of the ramps.

- 1 Extend Deceleration/Acceleration Lanes & Resurface Pavement



Permanent Ramp Closures

Ramps will be closed following the construction of the U.S. 20 Project (Randall Rd. to Shales Pkwy.) roadway improvements.

- 1 Proposed Pavement
- 2 Closed Ramp
- 3 Extend Guardrail
- 4 Noise Wall*
- 5 Re-stripe Deceleration/Acceleration Lanes as a Shoulder

* Part of the U.S. 20 Project (Randall Rd. to Shales Pkwy.)

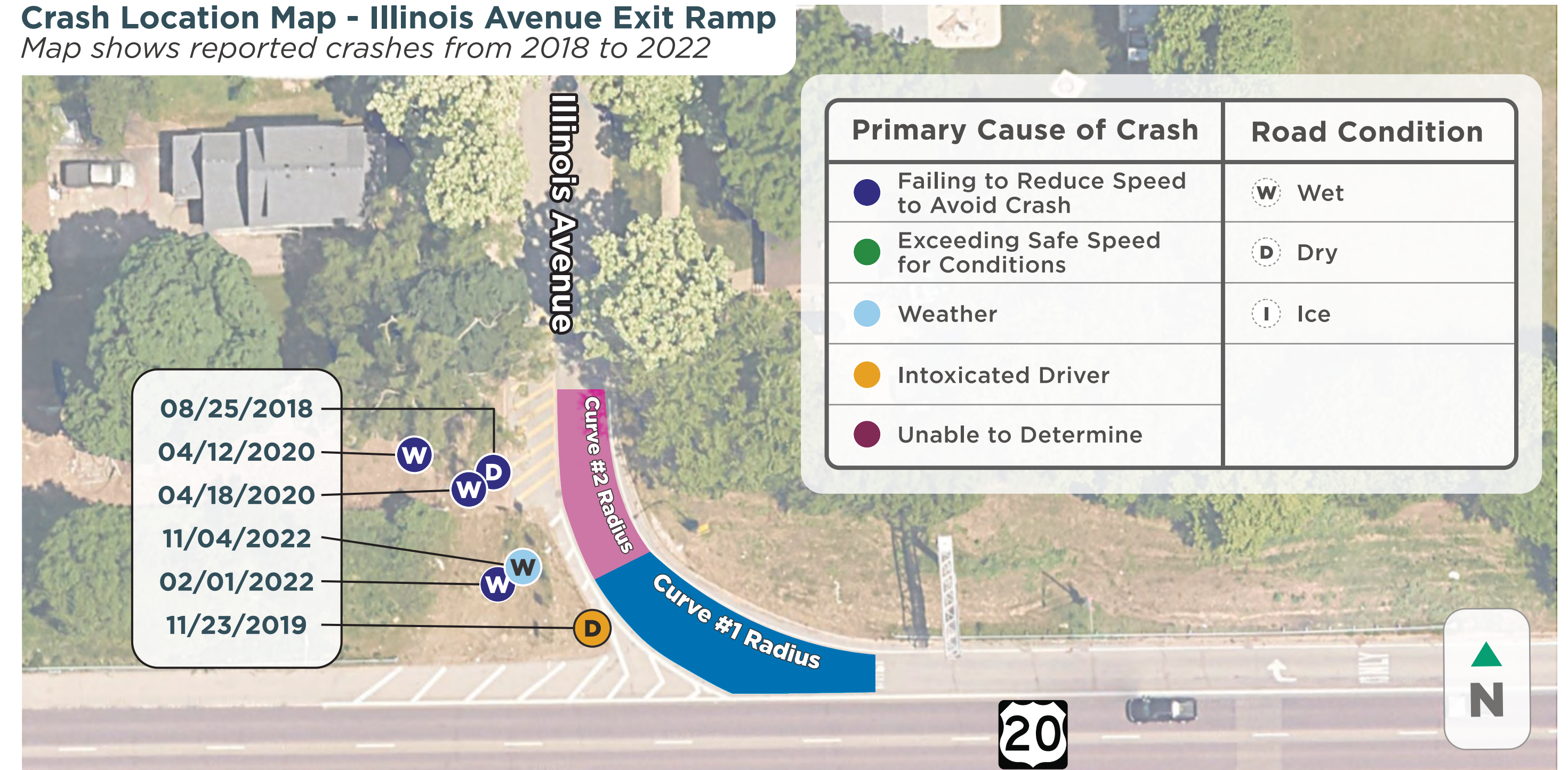


20 Safety - Illinois Avenue

Contributing Factors to Crashes Along the Illinois Avenue Ramp

- **Ramp Curve** Sharp curve makes it difficult for drivers to gage the appropriate speed to safely exit the ramp.
- **Visibility** The heavily vegetated area on the right-hand side of the ramp may have limited driver visibility prior to trimming.
- **Driver Behavior** Drivers ignore the posted 15 mph advisory speed sign and are not reducing their vehicle speed to safely exit the ramp.

Crash Location Map - Illinois Avenue Exit Ramp
Map shows reported crashes from 2018 to 2022

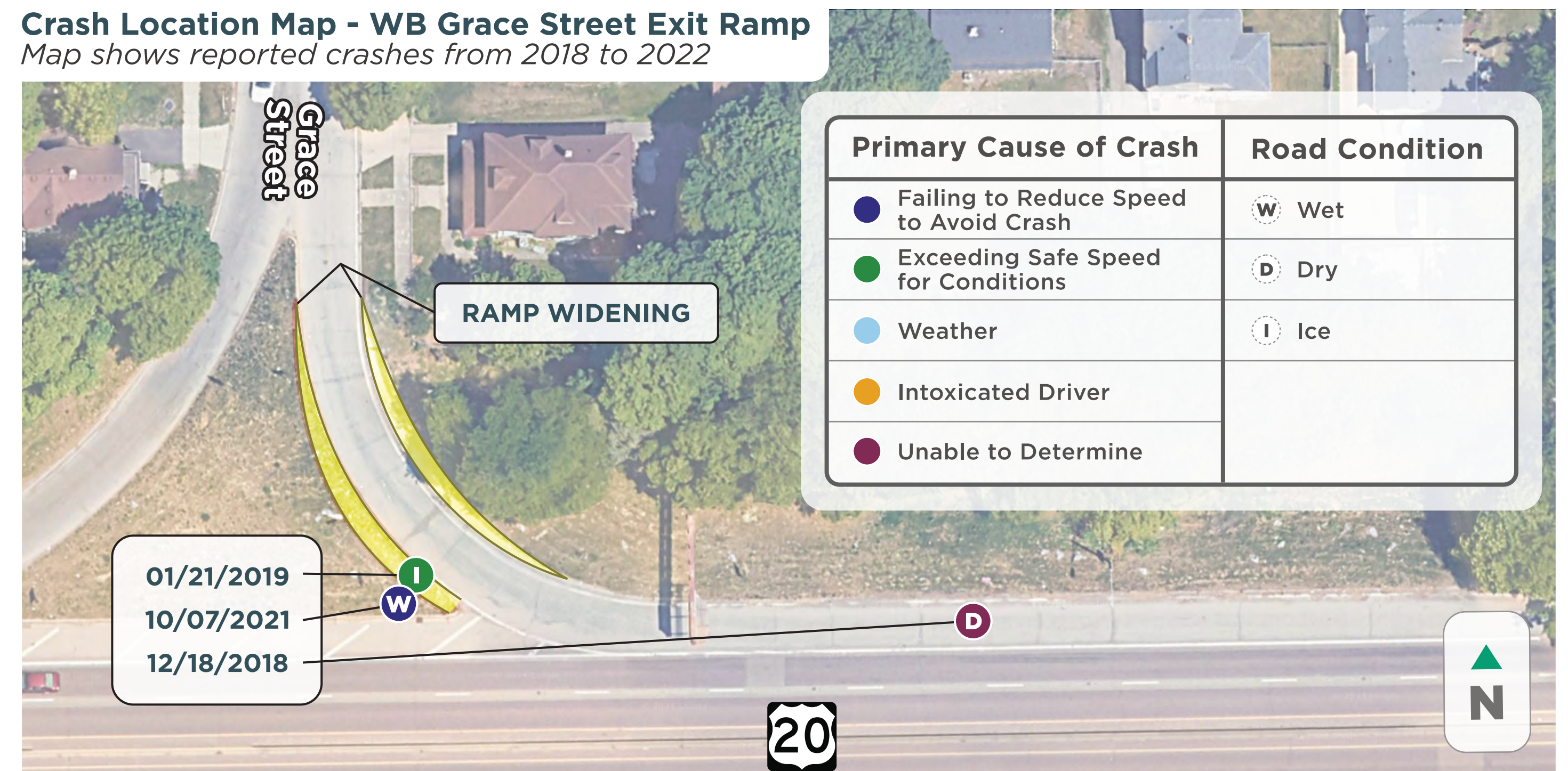


Impact of Moving Vehicles to the Westbound Grace Street Exit Ramp

The U.S. 20 Corridor Project (Randall Rd. to Shales Pkwy.) safety improvements include widening the ramp and extending the deceleration lane length. The improvements will provide additional space for exiting vehicles to safely navigate the ramp and reduce the potential for future crashes in the area of the deceleration lane.

The crash frequency is not expected to increase due to the closure of the Illinois Avenue ramp.

Crash Location Map - WB Grace Street Exit Ramp
Map shows reported crashes from 2018 to 2022



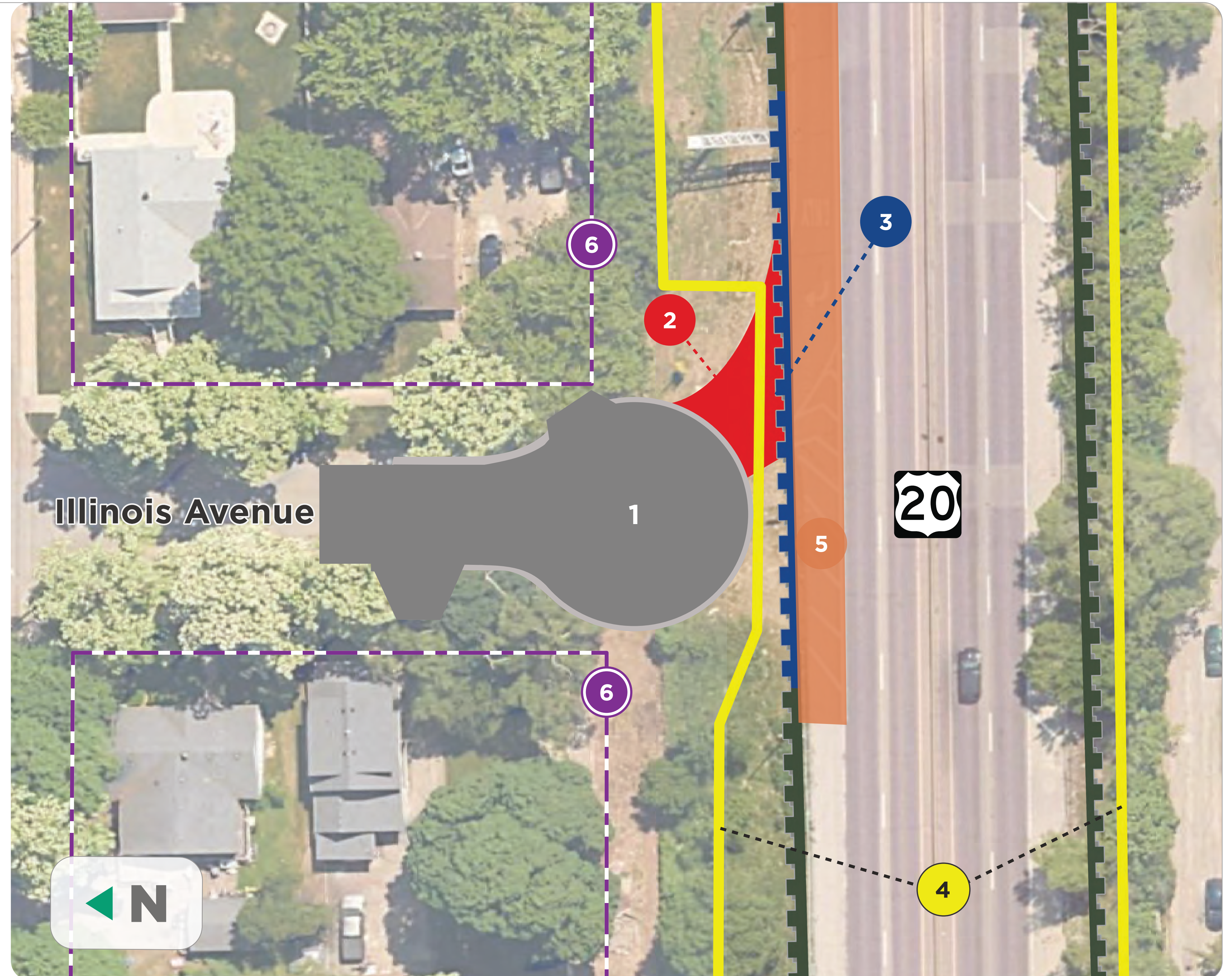
20 Preferred Alternative - Illinois Avenue

- No right-of-way or easement will be required
- Proposed signing revision at various locations

LEGEND

- 1 Proposed Pavement
- 2 Closed Ramp
- 3 Extend Guardrail
- 4 Noise Wall*
- 5 Re-stripe Deceleration Lane as a Shoulder
- 6 Existing Right-Of-Way

* Part of the U.S. 20 Project (Randall Rd. to Shales Pkwy.)



20 Vehicle Routes - Illinois Avenue

Existing Route



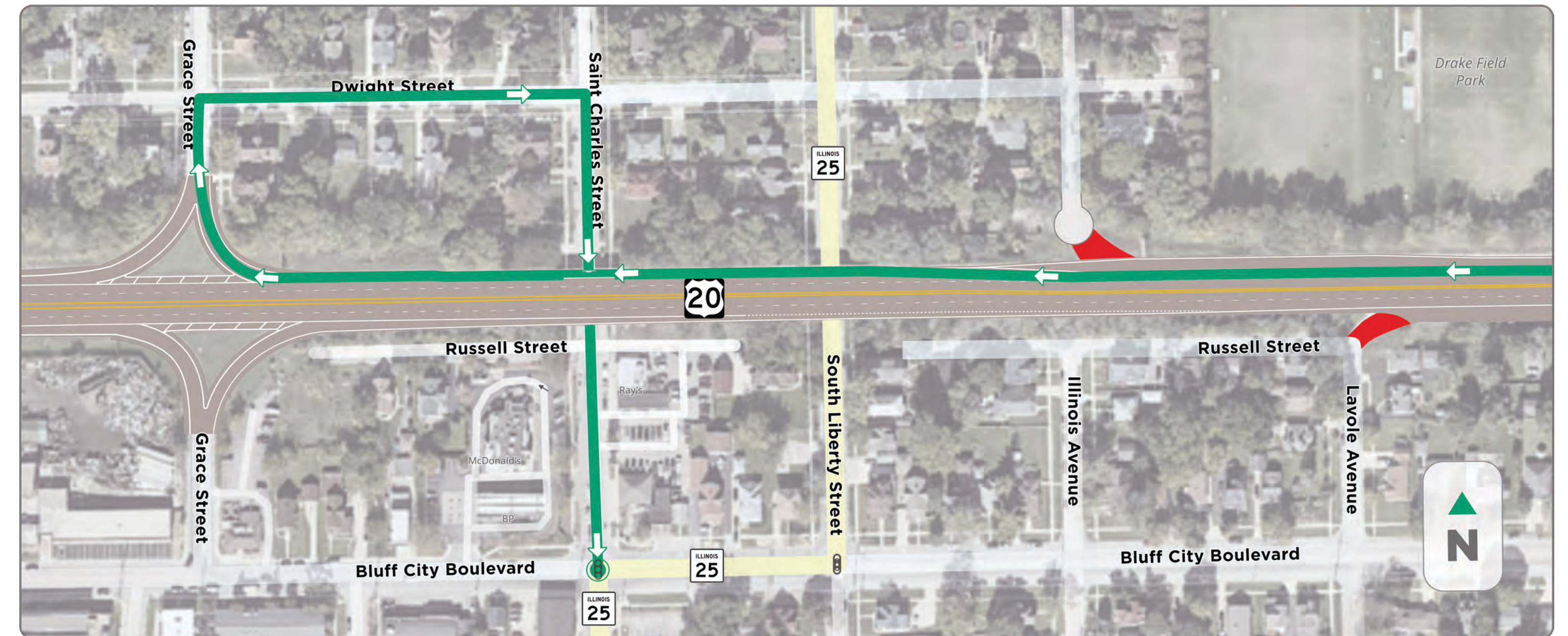
Route With Ramp Closures



Existing Route



Route With Ramp Closures



To Northbound IL 25

To Southbound IL 25

20 Volume Comparisons - Illinois Avenue



LEGEND

-  Existing Stop Signs
-  Existing Traffic Lights

*Traffic volumes are based on Existing (2023) 24-hour Traffic Counts

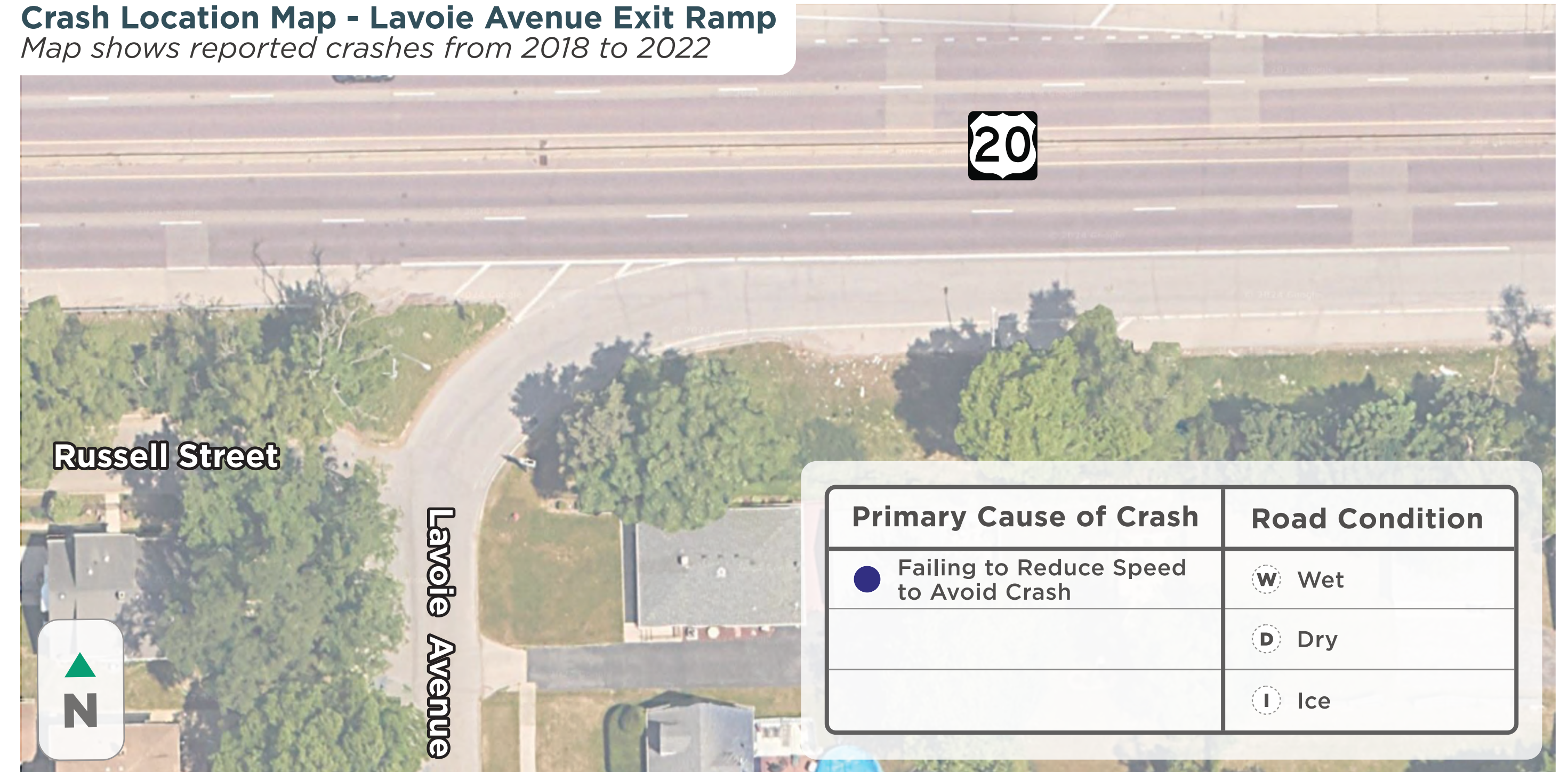
[See Animation On The Screen]

20 Safety - Lavoie Avenue

No crashes were reported along the ramp or acceleration lane.

Crash Location Map - Lavoie Avenue Exit Ramp

Map shows reported crashes from 2018 to 2022



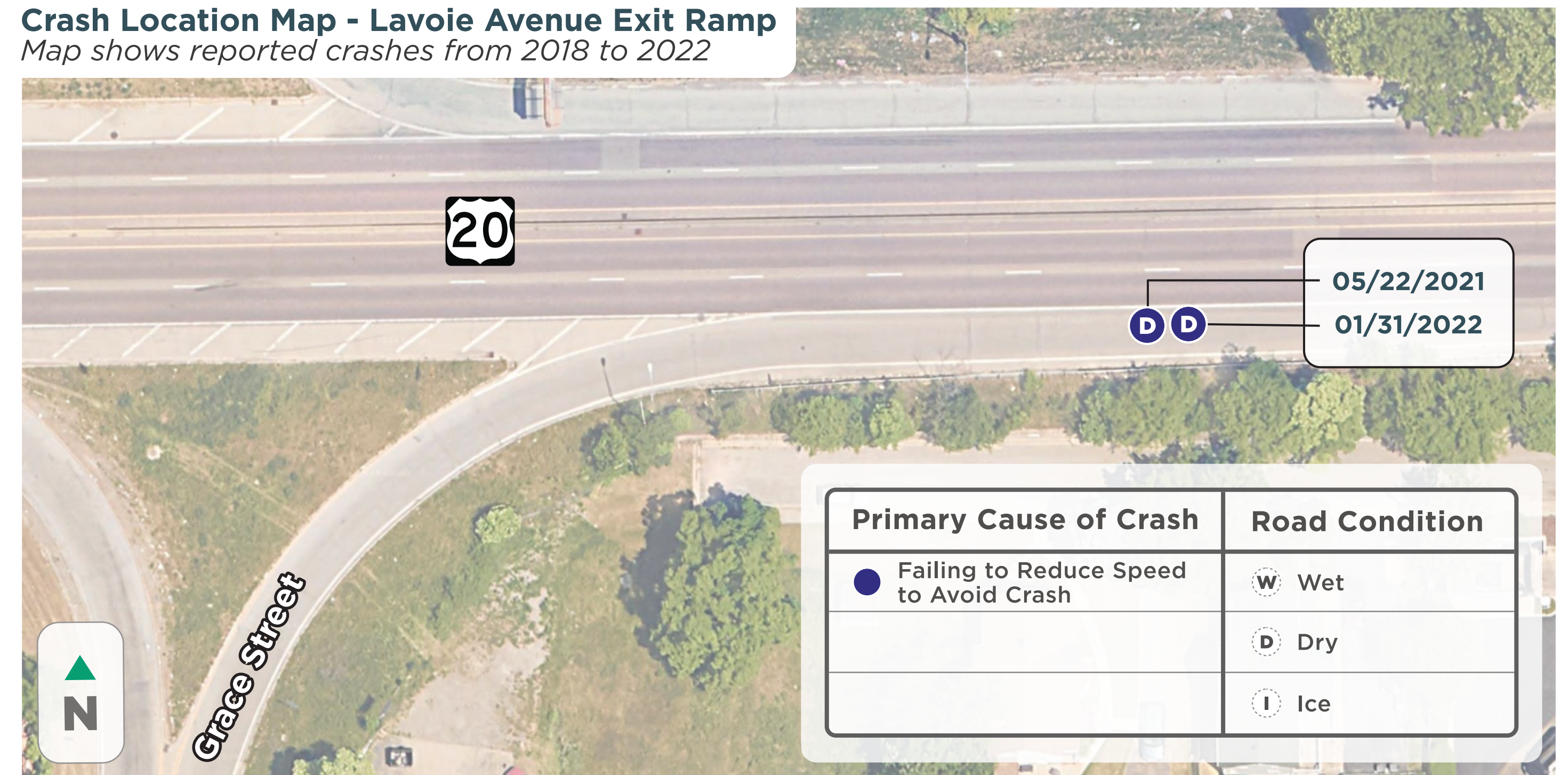
Impact of Moving Vehicles to the Eastbound Grace Street Entrance Ramp

The U.S. 20 Corridor Project (Randall Rd. to Shales Pkwy.) safety improvements include extending the acceleration lane length. The improvement will provide additional space for merging vehicles and reduce the potential for future crashes in the area of the acceleration lane.

The crash frequency is not expected to increase due to the closure of the Lavoie Avenue ramp.

Crash Location Map - Lavoie Avenue Exit Ramp

Map shows reported crashes from 2018 to 2022



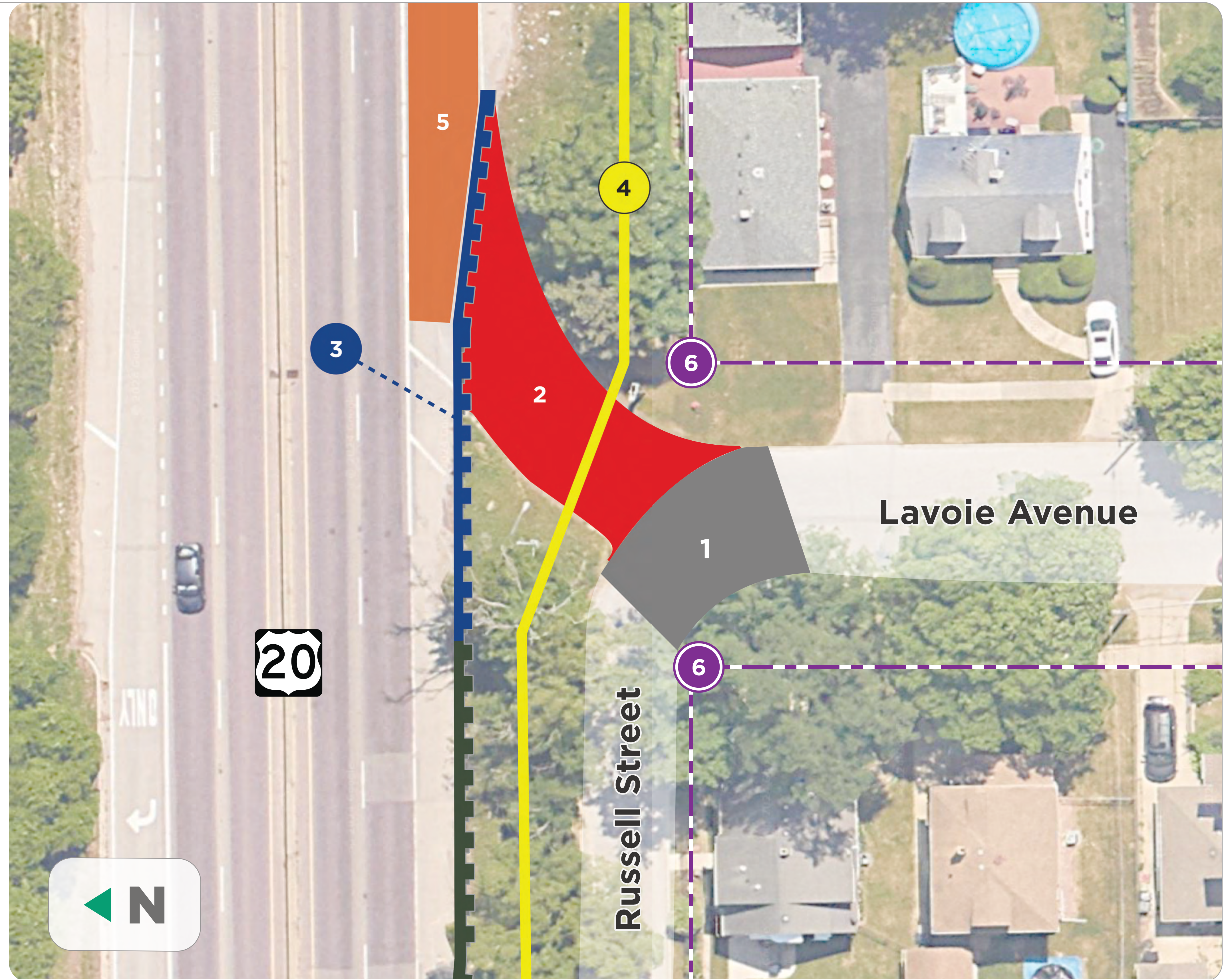
20 Preferred Alternative - Lavoie Avenue

- No right-of-way or easement will be required
- Proposed signing revision at various locations

LEGEND

- 1 Proposed Pavement
- 2 Closed Ramp
- 3 Extend Guardrail
- 4 Noise Wall*
- 5 Re-stripe Acceleration Lane as a Shoulder
- 6 Existing Right-Of-Way

* Part of the U.S. 20 Project (Randall Rd. to Shales Pkwy.)



20 Vehicle Routes - Lavoie Avenue

From Northbound IL 25

Existing Route



Route With Ramp Closures

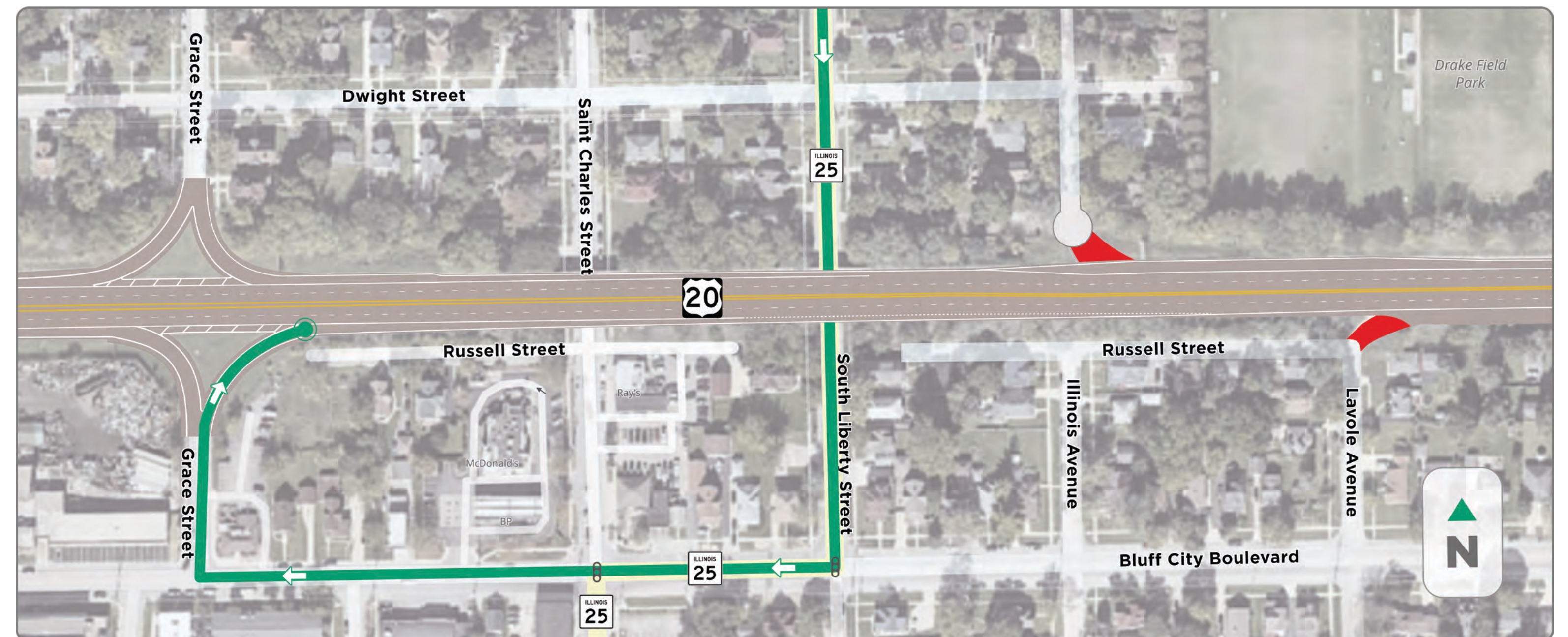


From Southbound IL 25

Existing Route



Route With Ramp Closures



20 Volume Comparisons - Lavoie Avenue



LEGEND

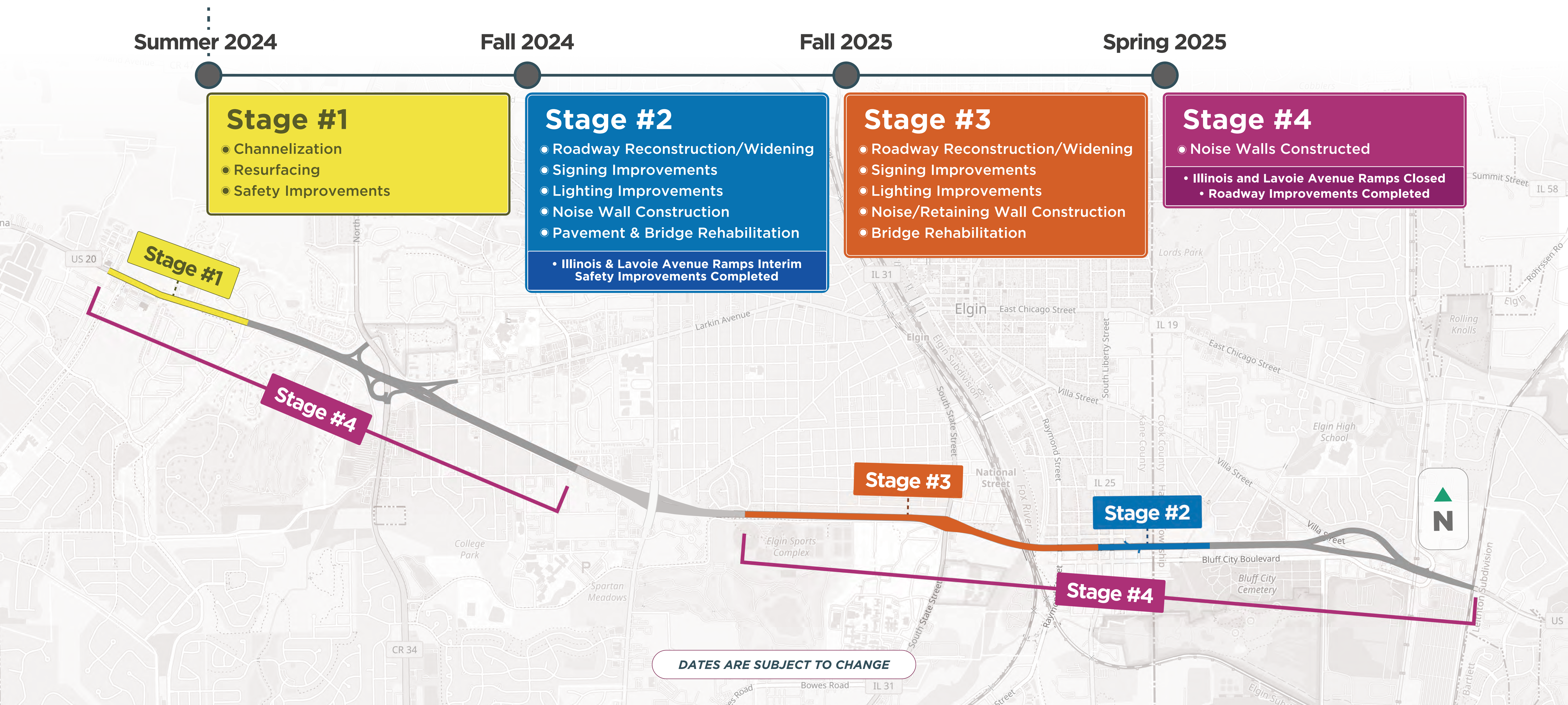
-  Existing Stop Signs
-  Existing Traffic Lights

*Traffic volumes are based on Existing (2023) Traffic Data

[See Animation On The Screen]

20 U.S. 20 Construction Timeline

Anticipated Construction Schedule for U.S. 20 Project (Randall Rd. to Shales Pkwy.)





U.S. 20 Ramps

Elgin, IL

Comment By May, 16 2024

Comment Form



Oral Submission



Project Website

- <https://idot.illinois.gov/us20ramps.html>

Email (For questions or information)

- DOT.US20Ramps@illinois.gov



Use your phone camera to hover over the QR code & submit an online comment.