



US 20 Ramps Elgin, IL

Public Information Hearing Summary



Public Hearing Overview

The Illinois Department of Transportation (IDOT) hosted a public hearing on Thursday, April 25, 2024 from 4-7 p.m. at the Centre in Elgin in Elgin, IL. The meeting was conducted in an open house format with separate stations including a Welcome/Sign-In Table, Exhibit Area, and Comment Station. The Exhibits presented displayed the project overview, project purpose and need, project history, preferred alternatives at the ramps, project schedule, and information on how to provide comments. Two videos showcasing animated traffic simulations and dangerous driver behavior at the Illinois Avenue and Lavoie Avenue ramps were played continuously throughout the hearing.

A handout detailing the relationship between the US 20 Ramps project and the overall US 20 (Randall Road to Shales Parkway) project was handed to attendees at the Welcome/Sign-In Table. IDOT staff and the project team were available throughout the hearing to answer questions from attendees.

The purpose of the public hearing was to share information on the status of the preferred design option from the study phase and gather input from attendees.

The exhibits, videos, and handout presented at the public hearing were posted on the project website for viewing for those who were unable to attend. Information and materials provided as the public hearing, as well as this newsletter, are available at <https://idot.illinois.gov/us20ramps.html>



A total of 16 comments were received in-person at the hearing, via the online comment submission form, or through the project email. All comments received during the public comment period (through May 16, 2024) will be included in the final Project Report. This summary addresses the comments received and provides an overview of the project.

Below is a summary of the 16 comments received. Some comments addressed multiple issues.

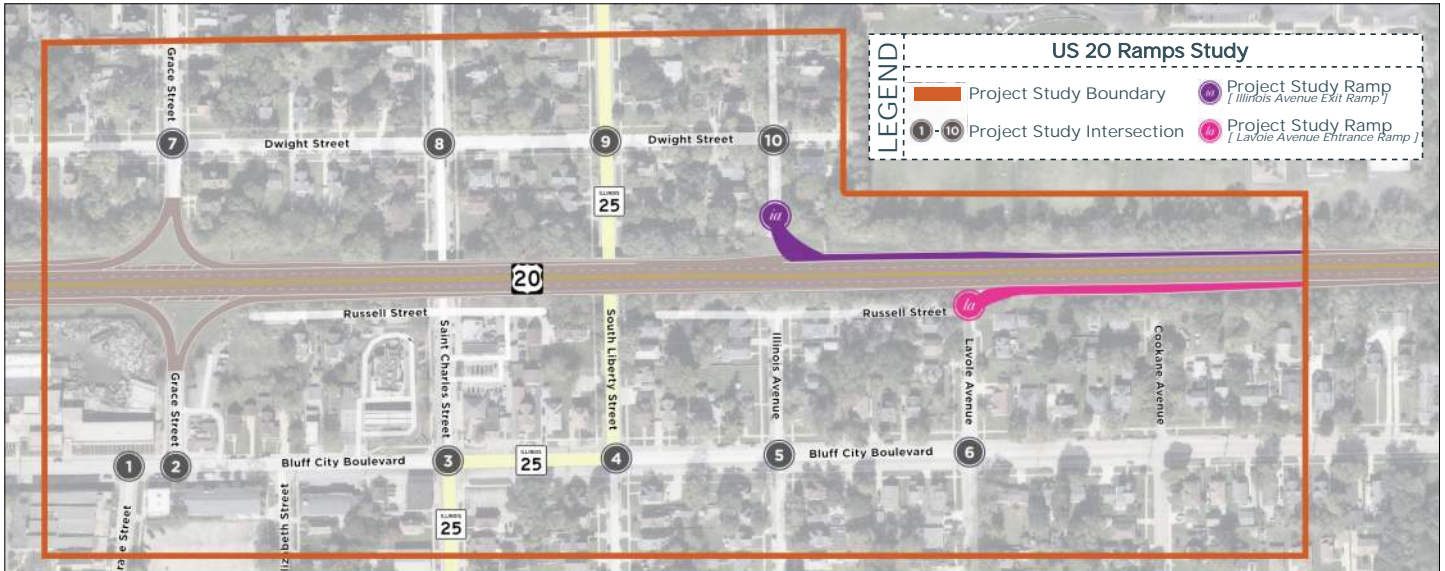
- Support or appreciation for the proposed project
10 comments
- Request for additional safety measures
4 comments
- Concerns about the impact to traffic
2 comments
- Concerns about the impact to safety
2 comments
- Concern about the impact to traffic during construction
1 comment
- Request for additional improvements
3 comments

Public Hearing Promotion

The online public meeting was promoted in a variety of ways, including newspaper display, advertisements published in The Daily Herald local newspaper, and a social media post shared on the City of Elgin Facebook account and city webpage. 49 letters and 1,314 postcards were also mailed to stakeholders, local officials, and property owners and residents within the project study area.

Purpose and Need

The preliminary engineering and environmental studies (Phase I) for the US 20 Illinois Ave. and Lavoie Ave. ramps were initiated following safety concerns and deficient infrastructure identified in the overall US 20 (Randall Road to Shales Parkway) project. The US 20 Ramps project was then established as an extension of the overall US 20 (Randall Road to Shales Parkway) project to further analyze and address deficient elements along the ramps.



The **purpose** of this project is to develop roadway improvements in conjunction with the permanent closure of the US 20 Illinois Avenue and Lavoie Avenue ramps. The **need** for this project is to improve safety by addressing deficiencies in the existing roadway infrastructure.

Preferred Alternative

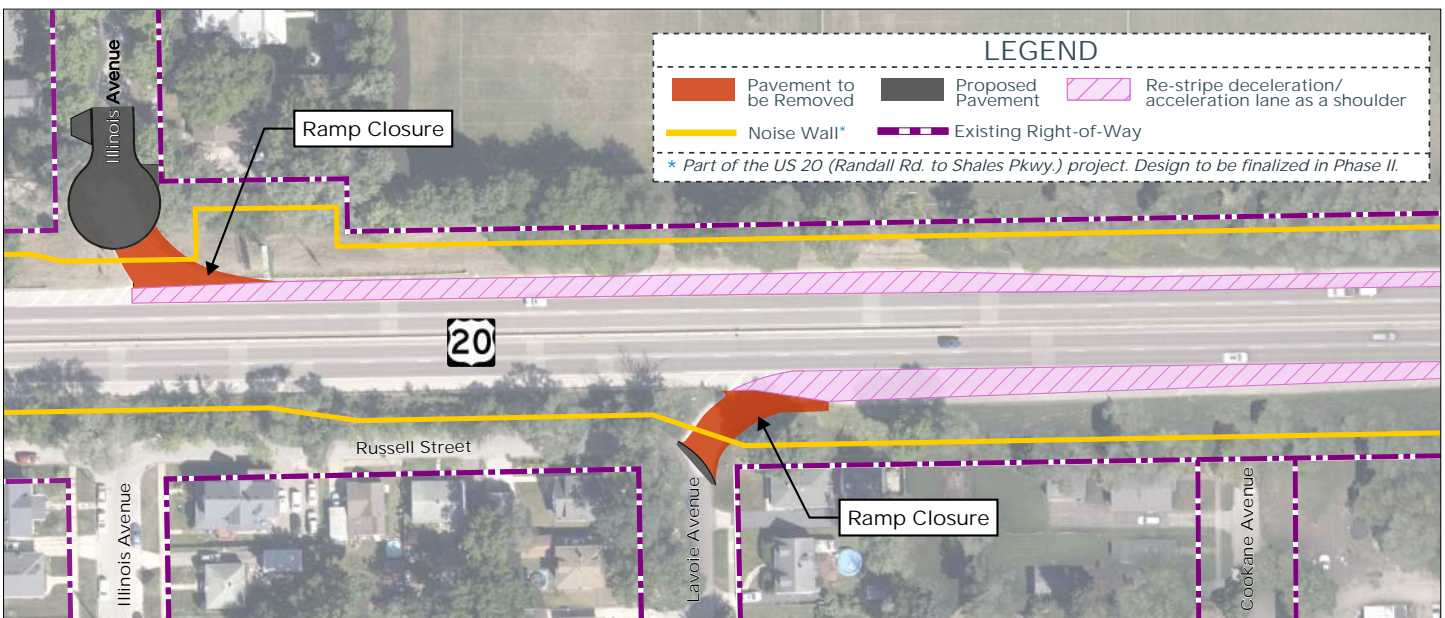
The proposed project includes the following design elements:

Illinois Avenue & US 20

- Closure of the US 20 Illinois Avenue exit ramp
- Re-striping the deceleration lane into a shoulder
- Extending the US 20 noise wall to eliminate gaps

Lavoie Avenue & US 20

- Closure of the US 20 Lavoie Avenue entrance ramp
- Re-striping the acceleration lane into a shoulder
- Extending the US 20 noise wall to eliminate gaps



Summary of Comments

This newsletter includes a summary of the 16 comments received during the public comment period (through May 16, 2024). Responses to the comments are included below.

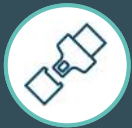


Impact to Local Traffic

Comments expressed concern with the impact to local traffic following the closure of the Illinois Avenue ramp, particularly along Grace Street.

A traffic analysis was completed as part of this study to evaluate the US 20 roadway network and adjacent study area intersections following the proposed closure of the Illinois Avenue and Lavoie Avenue ramps. Closure of the ramps is anticipated to reroute drivers to the US 20 Grace Street access ramps.

The ramp closures are anticipated to redistribute traffic and increase delay by a maximum average of 10 seconds for select intersection approaches during the peak morning and evening hours, considering the current intersection configuration. The traffic analysis also indicated no substantial impact to the filing length of vehicles is expected following the ramp closures when compared to the existing queues. The traffic analysis concluded that closing the Illinois Avenue and Lavoie Avenue ramps is not anticipated to significantly impact the US 20 roadway network and adjacent study area intersections under the current configuration. While the impact of the ramp closures to the study area is found to be minimal, IDOT intends to continue monitoring the performance of the study area intersections following the closure of the ramps.



Impact to Safety

Comments expressed safety concerns with the redirection of vehicles to various local intersections following the ramp closures.

The crash analysis completed as part of this study concluded that the crash frequency along the westbound Grace Street exit ramp is not expected to increase following the closure of the Illinois Avenue ramp. The analysis identified the sharp ramp curve, limited visibility, and driver behavior as contributing factors to crashes along the Illinois Avenue ramp. These factors are not present along the westbound Grace Street exit ramp and proposed improvements will provide additional safety measures. Similarly, the crash frequency along the eastbound Grace Street entrance ramp is not expected to increase following the closure of the Lavoie Avenue ramp. Proposed improvements along the eastbound entrance ramp will provide additional safety measures to reduce the potential for future crashes.



Impact to Traffic During Construction

Comment expressed concern with the potential impact to traffic during construction of the proposed improvements.

A traffic management plan (TMP), which identifies a set of strategies for managing the work zone impacts of a project, will be developed as part of this project. A complete TMP contains three elements:

1. Traffic Control Plan: A plan to safely guide traffic through a construction project through the use of traffic control devices and project coordination.
2. Transportation Operations Plan: A plan that consists of strategies which mitigate work zone impacts through the use of improved transportation operations and management of the transportation system.
3. Public Information Plan: A plan that consists of strategies which mitigate work zone impacts through the use of improved transportation operations and management of the transportation system.

The TMP will be utilized during construction to mitigate travel impacts due to construction.

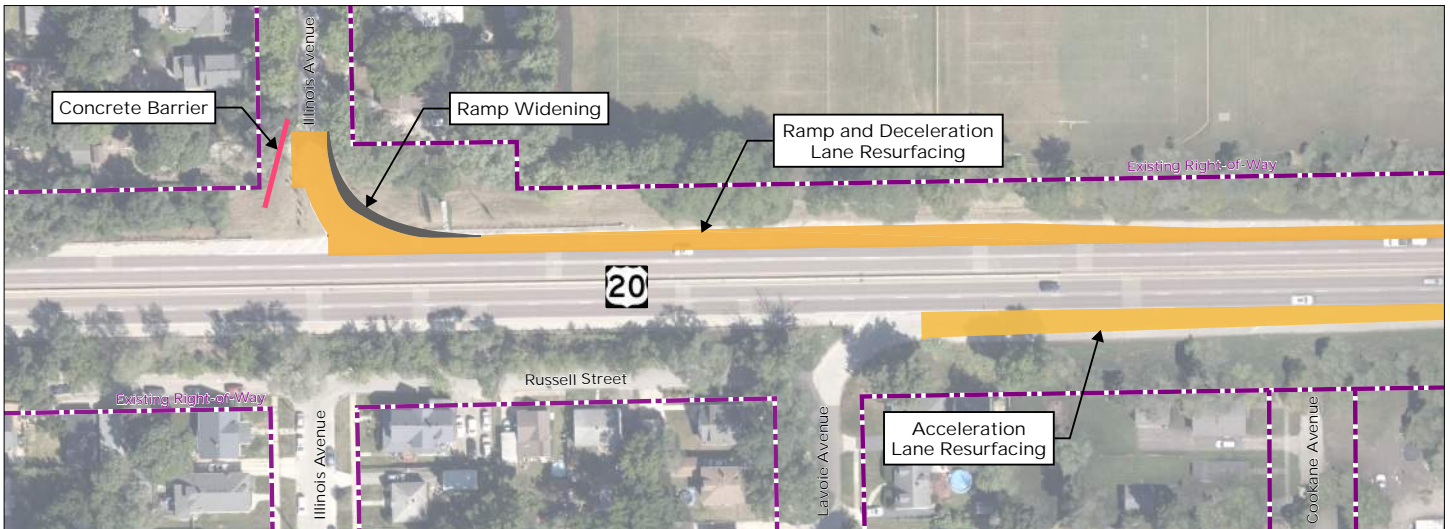


Additional Safety Measures

Comments expressed concern with the proposed interim safety measures set to be constructed prior to the ramp closures, as well as the existing measures for entering US 20 at the Grace Street ramps.

The Illinois Avenue and Lavoie Avenue ramps will remain open to serve as an alternative route for drivers during the overall US 20 (Randall Rd. to Shales Pkwy.) project construction. Interim safety measures will be put in place to address safety concerns while the ramps remain open. Proposed interim safety improvements include:

- Resurfacing the Illinois Avenue ramp and extending the deceleration lane
- Widening the Illinois Avenue ramp
- Installing concrete barrier along the outside edge of the Illinois Avenue ramp
- Resurfacing the Lavoie Avenue ramp and extending the acceleration lane



Proposed improvements included in the overall US 20 (Randall Rd. to Shales Pkwy.) project will provide additional safety measures along the Grace Street ramps. Proposed Grace Street ramp improvements consist of:

Eastbound US 20 & Grace Street

- Widening of the entrance and exit ramps
- Extending the acceleration lane
- Extending the deceleration lane
- Extending guardrail along the entrance ramp

Westbound US 20 & Grace Street

- Widening of the westbound exit ramp
- Extending the acceleration lane
- Extending the deceleration lane



Additional Improvements

Comments included requests for bridge improvements, noise walls, and improvements to the Grace Street ramps.

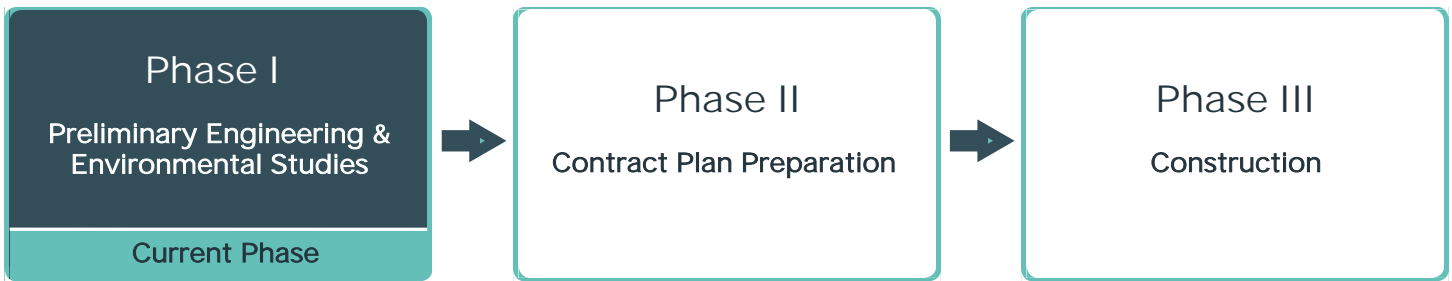
Bridge improvements, as well as noise walls and improvements to the Grace Street ramps, are included as part of the overall US 20 (Randall Rd. to Shales Pkwy.) project. The overall US 20 project includes proposed noise walls on either side the existing Illinois Avenue and Lavoie Avenue ramp. The noise walls will be extended through the existing ramp limits following the ramp closures to eliminate gaps in the wall. The final noise wall design to accommodate the ramp closures will be designed in Phase II. Several bridge structures will be rehabilitated, widened, or reconstructed as part of the overall US 20 project. Bridges included in the overall US 20 project include:

- IL 31 over US 20
- US 20 over Raymond Street
- US 20 over Liberty Street
- US 20 over the Fox River
- US 20 over St. Charles Street
- US 20 over Poplar Creek

Additional information regarding the overall US 20 (Randall Rd. to Shales Pkwy.) project can be found here: [Kane and Cook Counties - US 20 from Randall Road to Shales Parkway \(illinois.gov\)](http://www.illinois.gov/kane-cook-counties-us-20-from-randall-road-to-shales-parkway)

Next Steps

This project is nearing completion of Phase I, preliminary engineering and environmental studies. Contract plan preparation (Phase II) and construction (Phase III) are included in IDOT's FY 2024-2029 Proposed Highway Improvement Program. Current engineering efforts are targeting construction in the middle years of the program contingent upon plan readiness and funding availability through future annual legislative appropriations.



Stay Connected

The project website contains educational information and materials regarding the US 20 Ramps at Illinois Avenue and Lavole Avenue Phase I study. Visit the project website at:

<https://idot.illinois.gov/us20ramps.html>



If you have any questions or need additional information, please contact the project study team via email at

DOT.US20Ramps@illinois.gov