

LEGEND

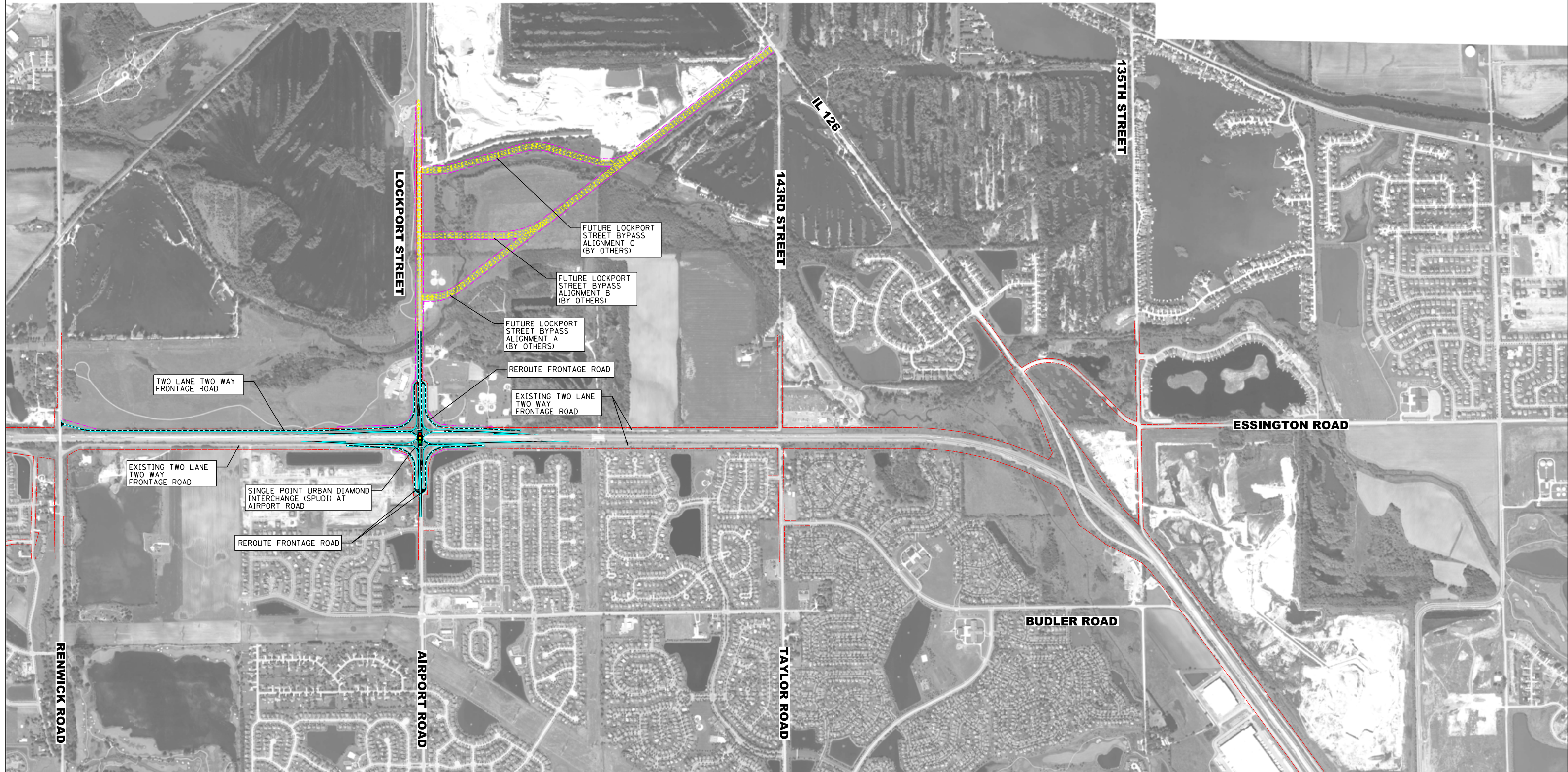
- PROP. ROADWAY PAVEMENT
- EXIST. RIGHT OF WAY
- PROP. RIGHT OF WAY
- POSSIBLE FUTURE LOCKPORT STREET BYPASS (BY OTHERS)
- PROP. TRAFFIC SIGNAL MODERNIZATION

POTENTIAL I-55 IMPROVEMENTS AT AIRPORT ROAD AND AT IL 126/ESSINGTON ROAD

ALTERNATIVE #1A - SINGLE POINT URBAN DIAMOND INTERCHANGE (SPUDI) AT AIRPORT ROAD AND LOCKPORT STREET BYPASS. NO CHANGE AT IL 126.

SCALE = 1"=500'

06/21/2012



LEGEND

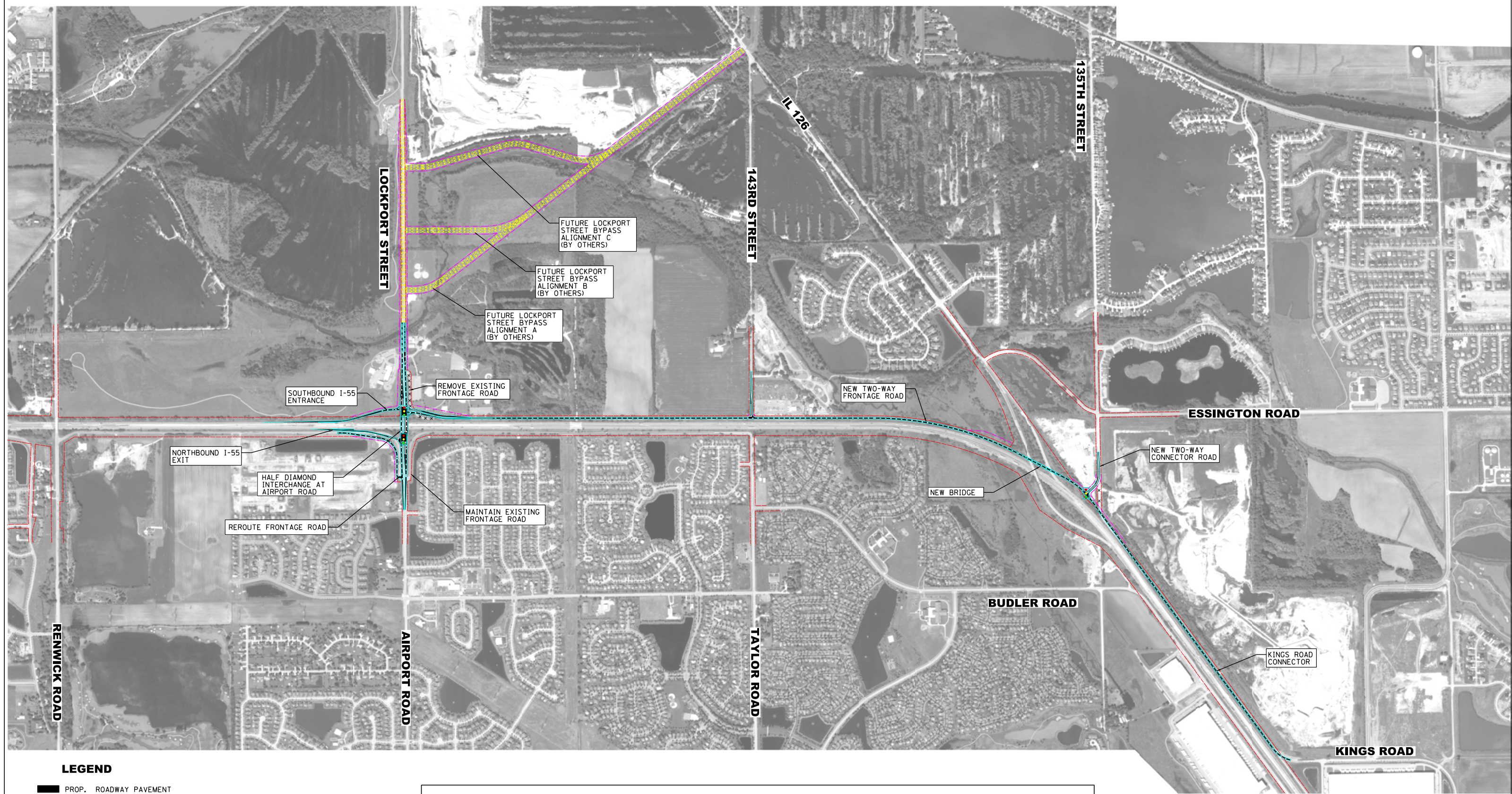
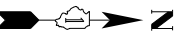
- PROP. ROADWAY PAVEMENT
- EXIST. RIGHT OF WAY
- PROP. RIGHT OF WAY
- POSSIBLE FUTURE LOCKPORT STREET BYPASS (BY OTHERS)
- PROP. TRAFFIC SIGNAL MODERNIZATION

POTENTIAL I-55 IMPROVEMENTS AT AIRPORT ROAD AND AT IL 126/ESSINGTON ROAD

ALTERNATIVE #1B - SINGLE POINT URBAN DIAMOND INTERCHANGE (SPUDI) AT AIRPORT ROAD WITH TWO-WAY FRONTAGE ROADS BETWEEN RENWICK ROAD AND AIRPORT ROAD WITH LOCKPORT STREET BYPASS. NO CHANGE AT IL 126.

SCALE = 1"=500'

06/21/2012



LEGEND

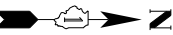
- PROP. ROADWAY PAVEMENT
- EXIST. RIGHT OF WAY
- PROP. RIGHT OF WAY
- POSSIBLE FUTURE LOCKPORT STREET BYPASS (BY OTHERS)
- PROP. TRAFFIC SIGNAL MODERNIZATION

POTENTIAL I-55 IMPROVEMENTS AT AIRPORT ROAD AND AT IL 126/ESSINGTON ROAD

ALTERNATIVE #1C - HALF DIAMOND INTERCHANGE AT AIRPORT ROAD WITH FRONTAGE ROADS FROM KINGS ROAD TO AIRPORT ROAD AND LOCKPORT STREET BYPASS. NO CHANGE AT IL 126.

SCALE = 1"=500'

06/21/2012



LEGEND

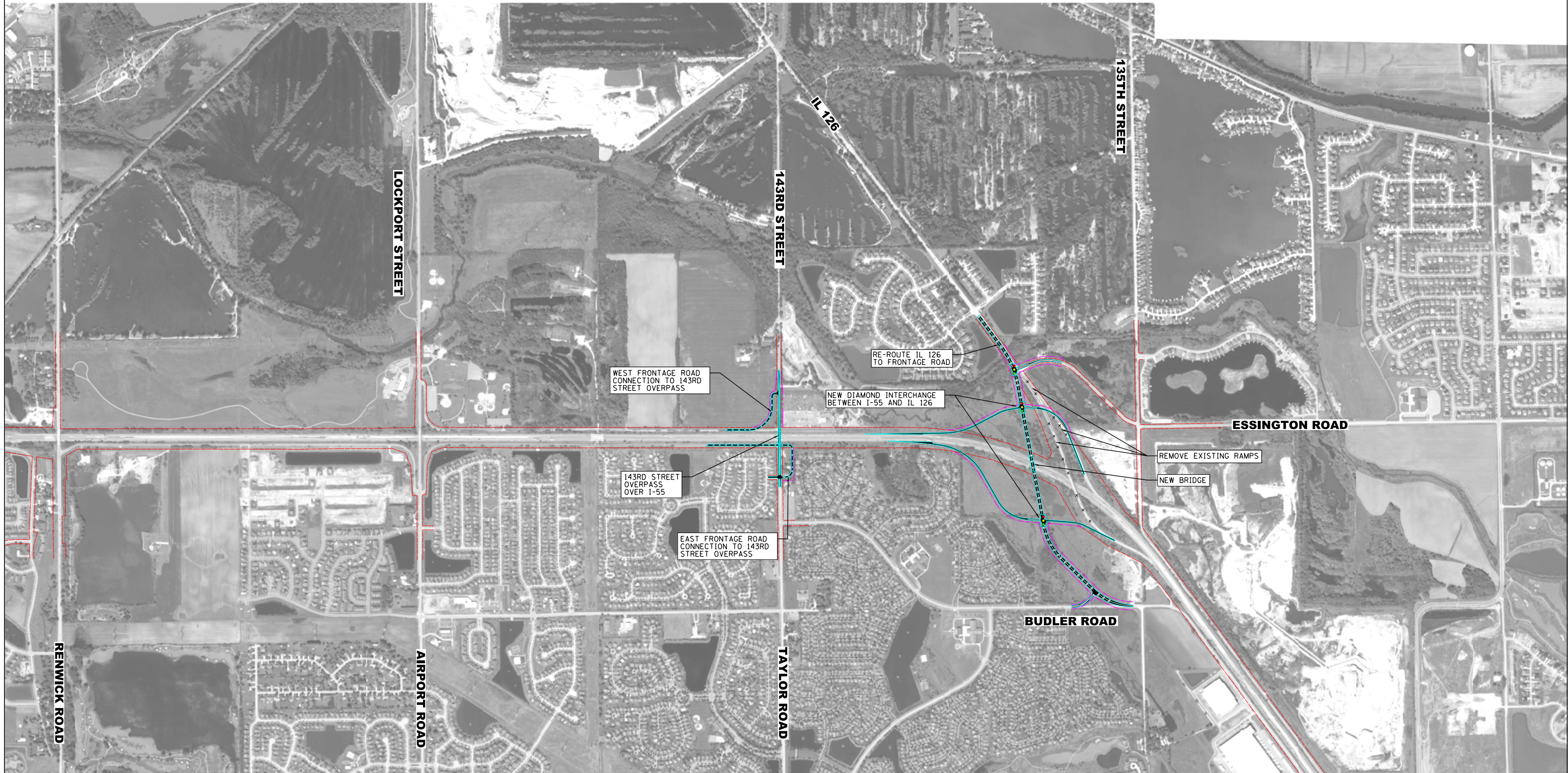
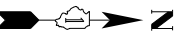
- PROP. ROADWAY PAVEMENT
- EXIST. RIGHT OF WAY
- PROP. RIGHT OF WAY
- PROP. TRAFFIC SIGNAL MODERNIZATION

POTENTIAL I-55 IMPROVEMENTS AT AIRPORT ROAD AND AT IL 126/ESSINGTON ROAD

ALTERNATIVE #2A - FULL ACCESS INTERCHANGE AT IL 126 WITH 143RD STREET OVERPASS.

SCALE = 1"=500'

06/21/2012



LEGEND

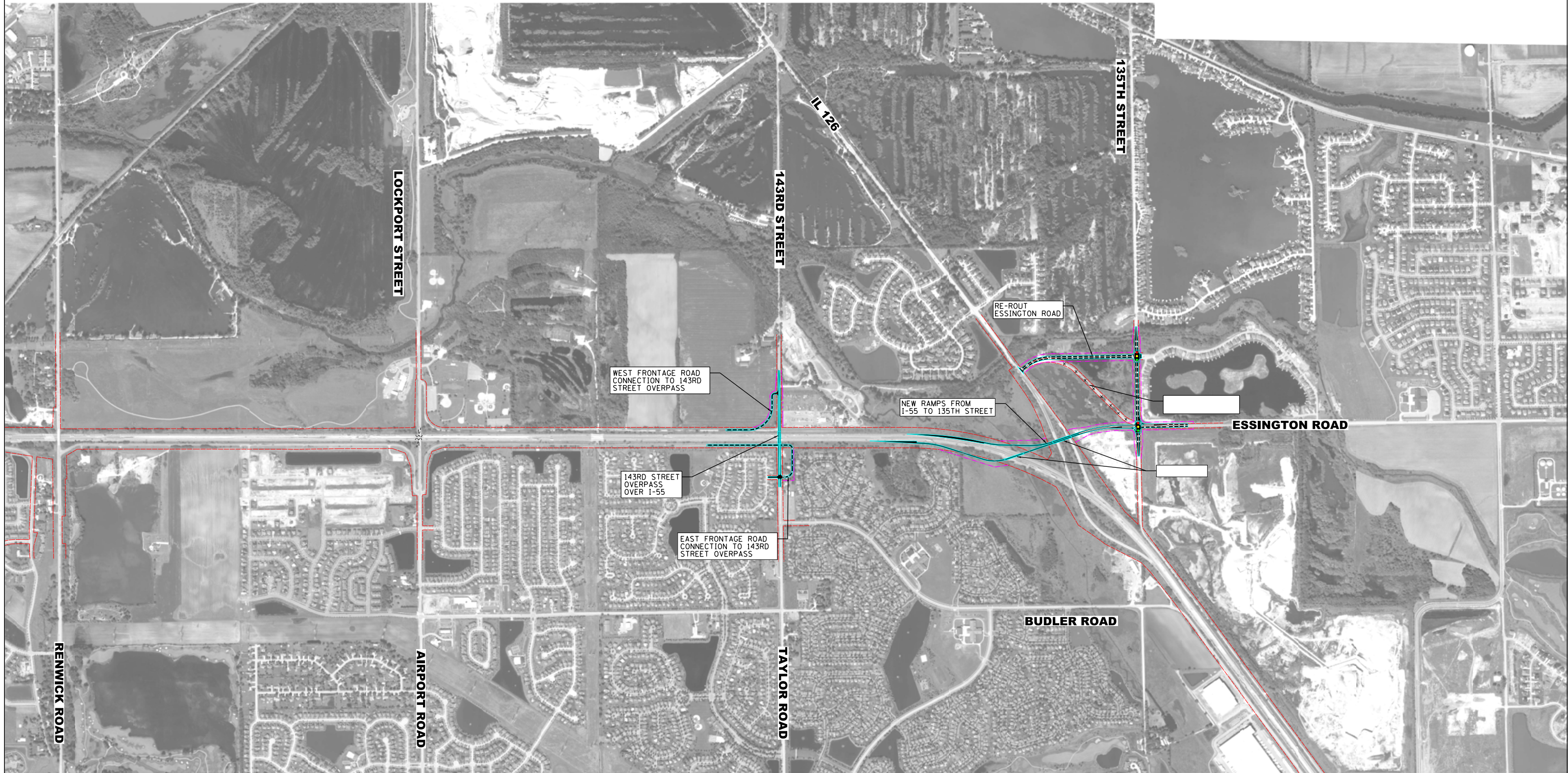
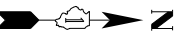
- PROP. ROADWAY PAVEMENT
- EXIST. RIGHT OF WAY
- PROP. RIGHT OF WAY
- PROP. TRAFFIC SIGNAL MODERNIZATION

POTENTIAL I-55 IMPROVEMENTS AT AIRPORT ROAD AND AT IL 126/ESSINGTON ROAD

ALTERNATIVE #2B - DIAMOND INTERCHANGE AT IL 126 WITH
BUDLER ROAD CONNECTOR AND 143RD STREET OVERPASS.

SCALE = 1"=500'

06/21/2012



LEGEND

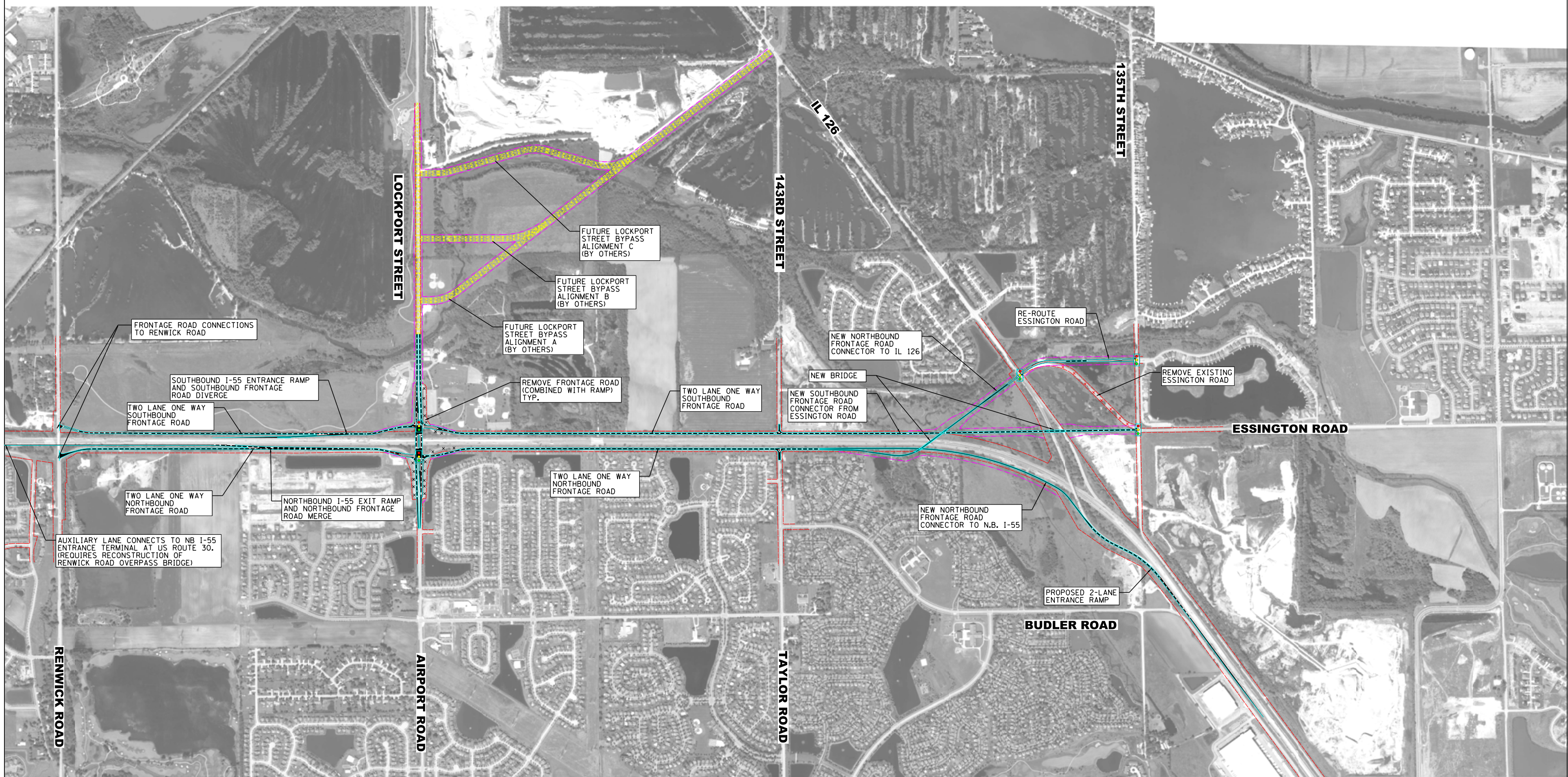
- PROP. ROADWAY PAVEMENT
- EXIST. RIGHT OF WAY
- PROP. RIGHT OF WAY
- PROP. TRAFFIC SIGNAL MODERNIZATION

POTENTIAL I-55 IMPROVEMENTS AT AIRPORT ROAD AND AT IL 126/ESSINGTON ROAD

ALTERNATIVE #2C - FULL ACCESS INTERCHANGE AT IL 126 WITH
ESSINGTON ROAD CONNECTOR AND 143RD STREET OVERPASS.

SCALE = 1"=500'

06/21/2012



LEGEND

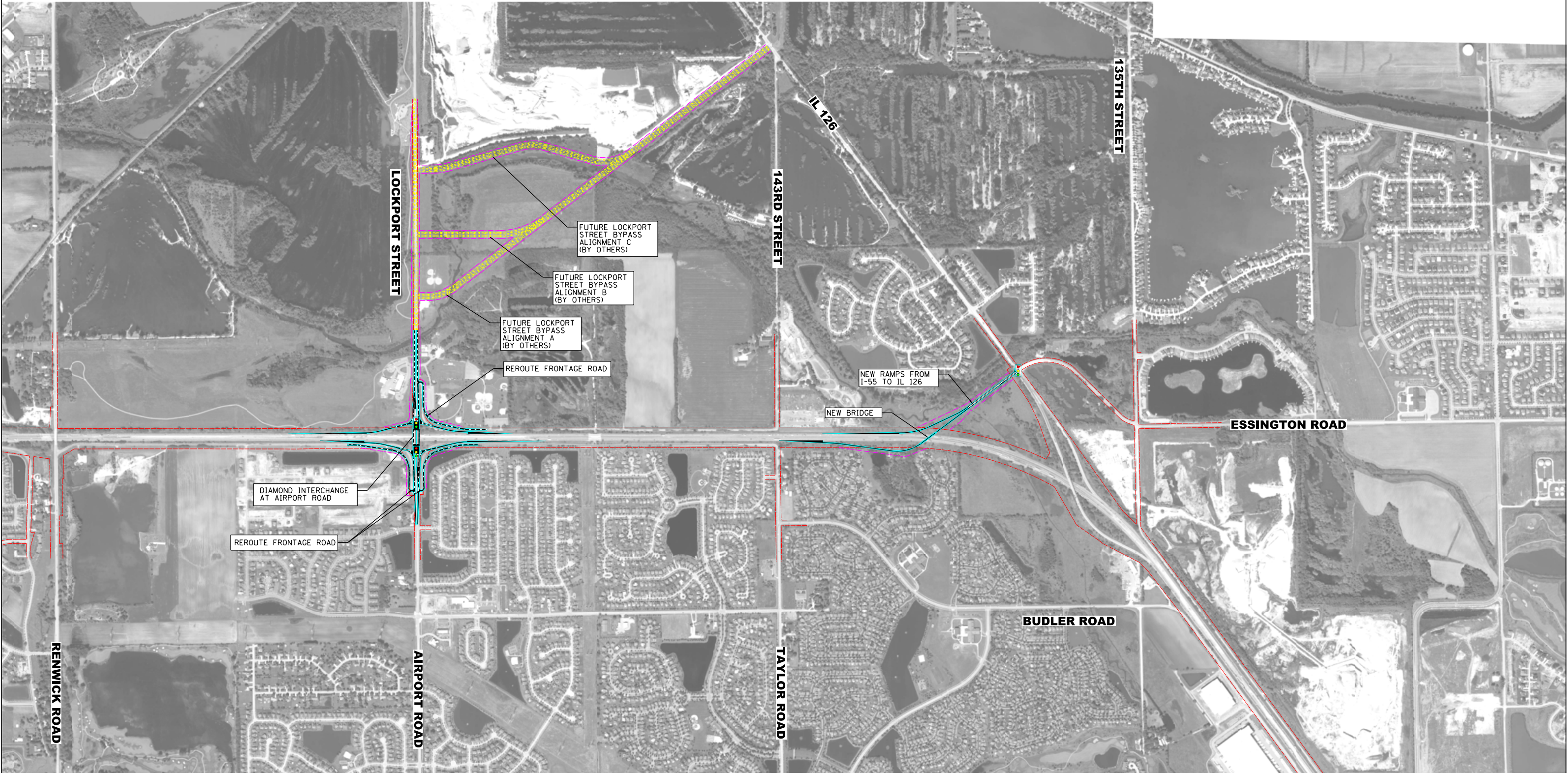
- PROP. ROADWAY PAVEMENT
- EXIST. RIGHT OF WAY
- PROP. RIGHT OF WAY
- POSSIBLE FUTURE LOCKPORT STREET BYPASS (BY OTHERS)
- PROP. TRAFFIC SIGNAL MODERNIZATION

POTENTIAL I-55 IMPROVEMENTS AT AIRPORT ROAD AND AT IL 126/ESSINGTON ROAD

ALTERNATIVE #3A - SPREAD DIAMOND INTERCHANGE AT AIRPORT ROAD & IL 126 WITH ONE-WAY FRONTAGE ROADS FROM RENWICK TO ESSINGTON AND LOCKPORT STREET BYPASS.

SCALE = 1"=500'

06/21/2012



LEGEND

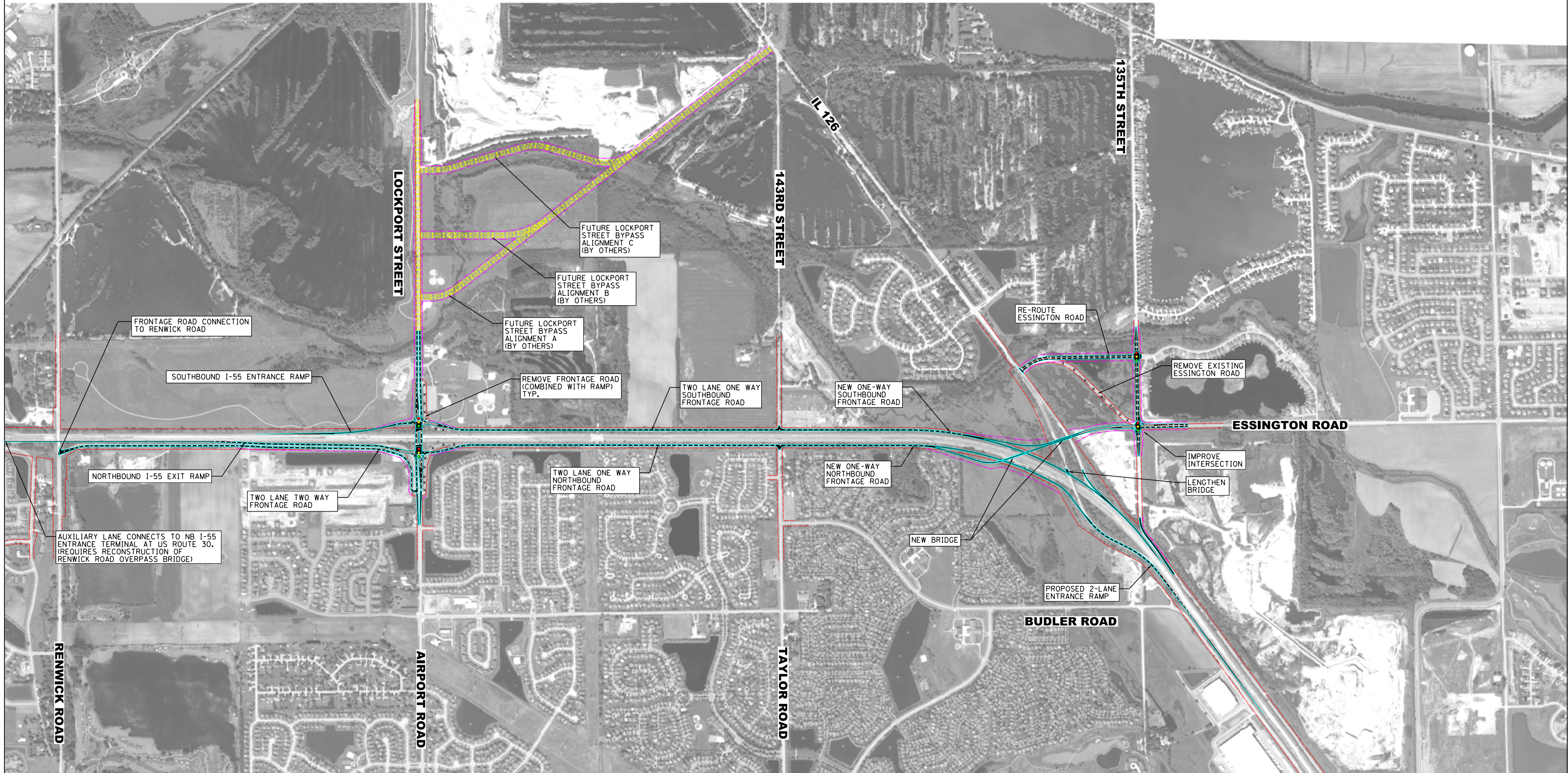
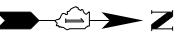
- PROP. ROADWAY PAVEMENT
- EXIST. RIGHT OF WAY
- PROP. RIGHT OF WAY
- POSSIBLE FUTURE LOCKPORT STREET BYPASS (BY OTHERS)
- PROP. TRAFFIC SIGNAL MODERNIZATION

POTENTIAL I-55 IMPROVEMENTS AT AIRPORT ROAD AND AT IL 126/ESSINGTON ROAD

ALTERNATIVE #3B - DIAMOND INTERCHANGE AT AIRPORT ROAD & FULL ACCESS AT IL 126 INTERCHANGE AND LOCKPORT STREET BYPASS.

SCALE = 1"=500'

06/21/2012



LEGEND

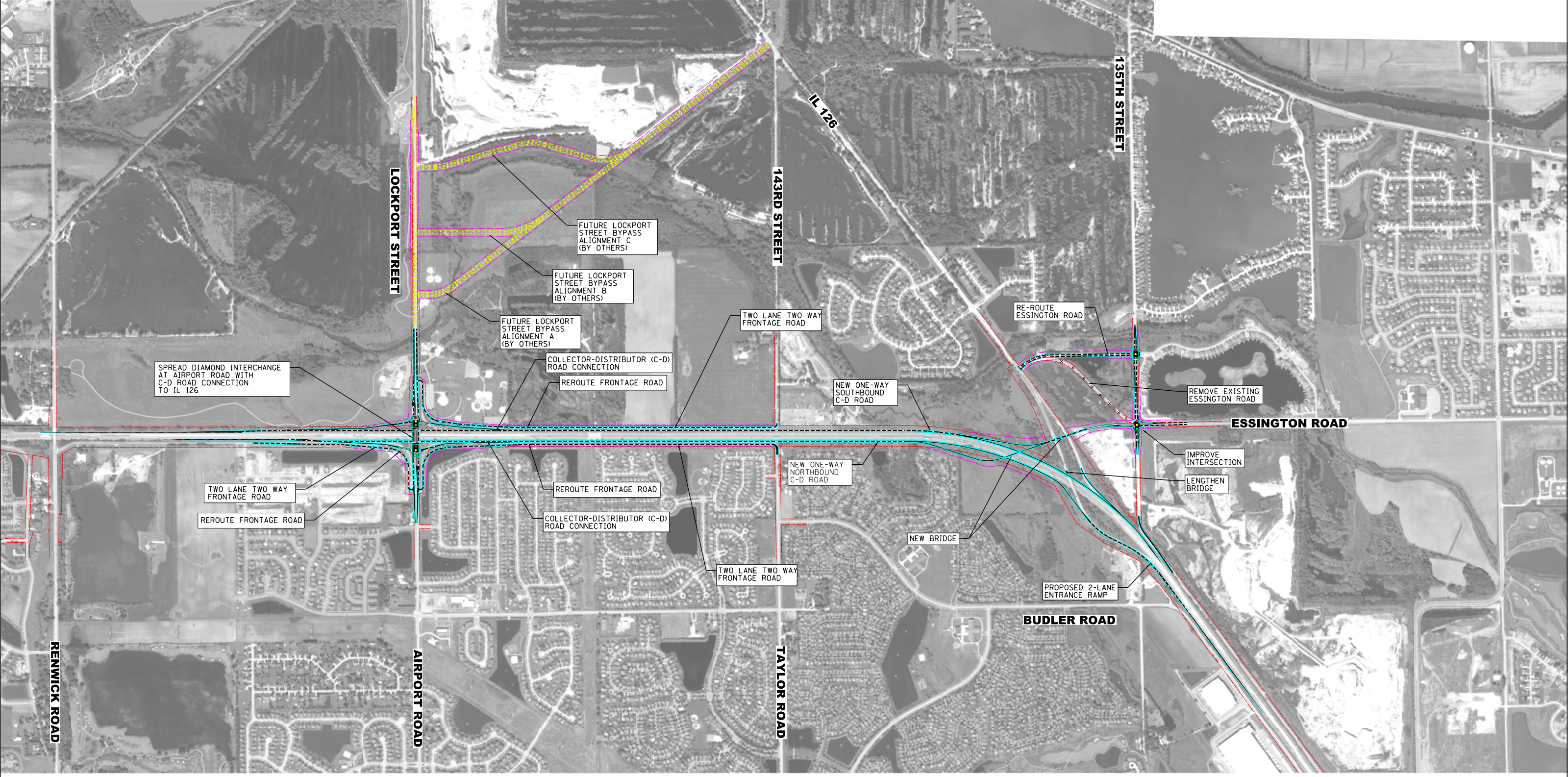
- PROP. ROADWAY PAVEMENT
- EXIST. RIGHT OF WAY
- PROP. RIGHT OF WAY
- POSSIBLE FUTURE LOCKPORT STREET BYPASS (BY OTHERS)
- PROP. TRAFFIC SIGNAL MODERNIZATION

POTENTIAL I-55 IMPROVEMENTS AT AIRPORT ROAD AND AT IL 126/ESSINGTON ROAD

ALTERNATIVE #3C - SPREAD DIAMOND INTERCHANGE AT AIRPORT ROAD & IL 126 WITH FRONTAGE ROAD CONNECTION AND LOCKPORT STREET BYPASS.

SCALE = 1"=500'

06/21/2012



LEGEND

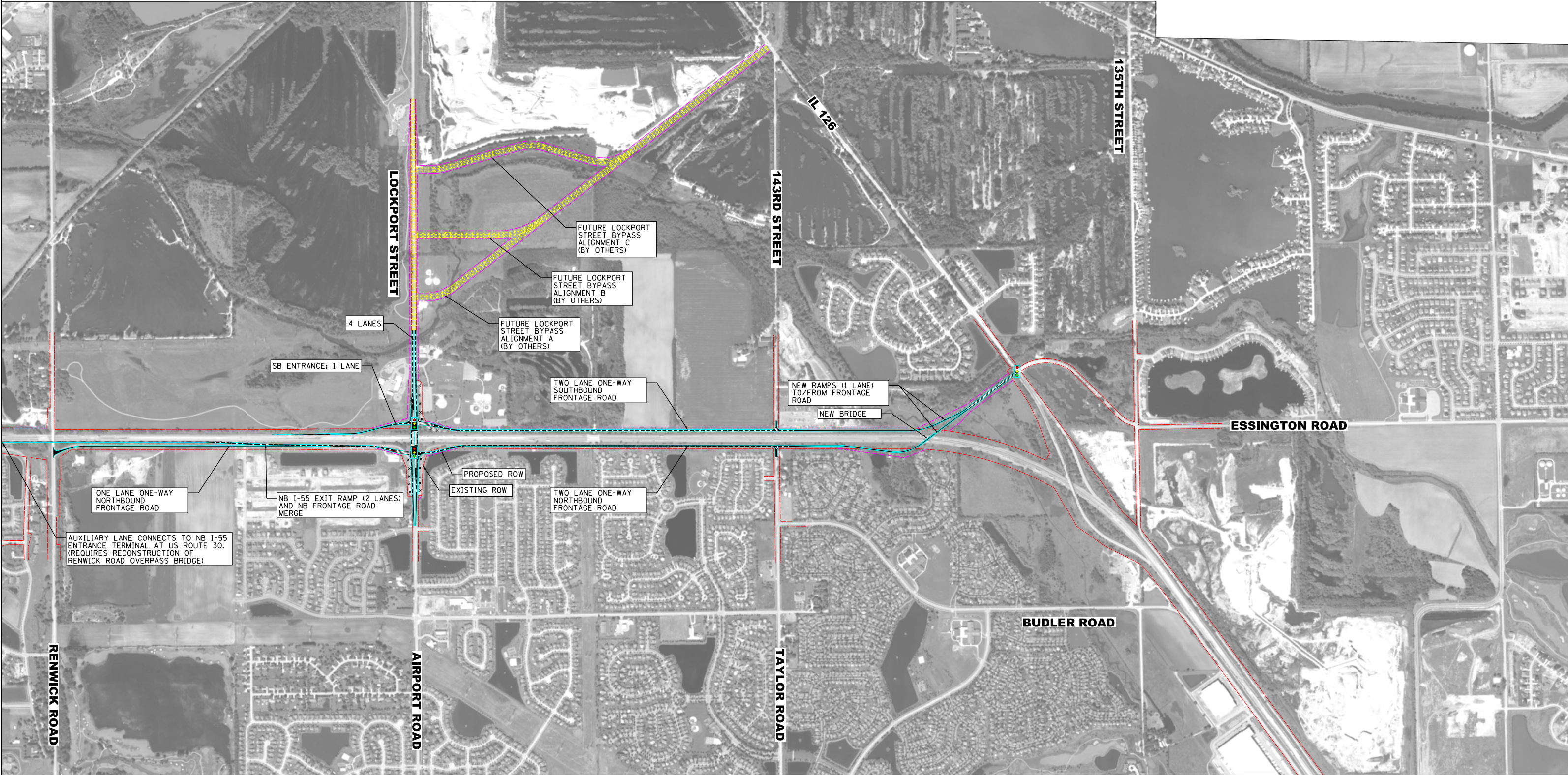
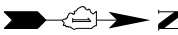
- PROP. ROADWAY PAVEMENT
- EXIST. RIGHT OF WAY
- PROP. RIGHT OF WAY
- POSSIBLE FUTURE LOCKPORT STREET BYPASS (BY OTHERS)
- PROP. TRAFFIC SIGNAL MODERNIZATION

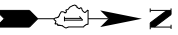
POTENTIAL I-55 IMPROVEMENTS AT AIRPORT ROAD AND AT IL 126/ESSINGTON ROAD

ALTERNATIVE #3D - SPREAD DIAMOND INTERCHANGE AT AIRPORT ROAD & FULL ACCESS AT IL 126 INTERCHANGE WITH COLLECTOR-DISTRIBUTION ROAD CONNECTION AND LOCKPORT STREET BYPASS.

SCALE = 1"=500'

06/21/2012





LEGEND

- PROP. ROADWAY PAVEMENT
- EXIST. RIGHT OF WAY
- PROP. RIGHT OF WAY
- PROP. TRAFFIC SIGNAL MODERNIZATION

POTENTIAL I-55 IMPROVEMENTS AT AIRPORT ROAD AND AT IL 126/ESSINGTON ROAD

ALTERNATIVE #4A - FRONTAGE ROAD ON WEST SIDE OF I-55 FROM ESSINGTON ROAD INTERSECTION WITH IL 126 TO AIRPORT ROAD AND 143RD STREET OVERPASS.

SCALE = 1"=500'

06/21/2012