

IL Route 2 from IL Route 72 in Byron to Beltline Road South of Rockford

Ogle/Winnebago County

Wednesday, May 7, 2014
1:00 P.M. to 6:00 P.M.

St. Mary Catholic Church
226 E. Second Street
Byron, Illinois

PUBLIC INPUT AND INVOLVEMENT

Context Sensitive Solutions, or CSS, will be utilized for the IL Route 2 Phase I study. CSS is identifying how the transportation facility fits into and relates to the project surroundings. The best way to determine how a project fits with the surroundings is to ask and involve the project stakeholders. A stakeholder is anyone who is potentially affected by, concerned with, or interested in the outcome of the improvement being contemplated.

A Community Advisory Group (CAG) will be created from a representation of the project stakeholders. The CAG will help identify the problem and need of the project, identify alternatives, and evaluate and consider the alternatives, resulting in a preferred alternative. **Figure 3** below identifies the steps of a Phase I project and the corresponding public input opportunities.

**If you would be interested in serving on the CAG,
please complete a membership application form tonight.**

PROJECT MILESTONES

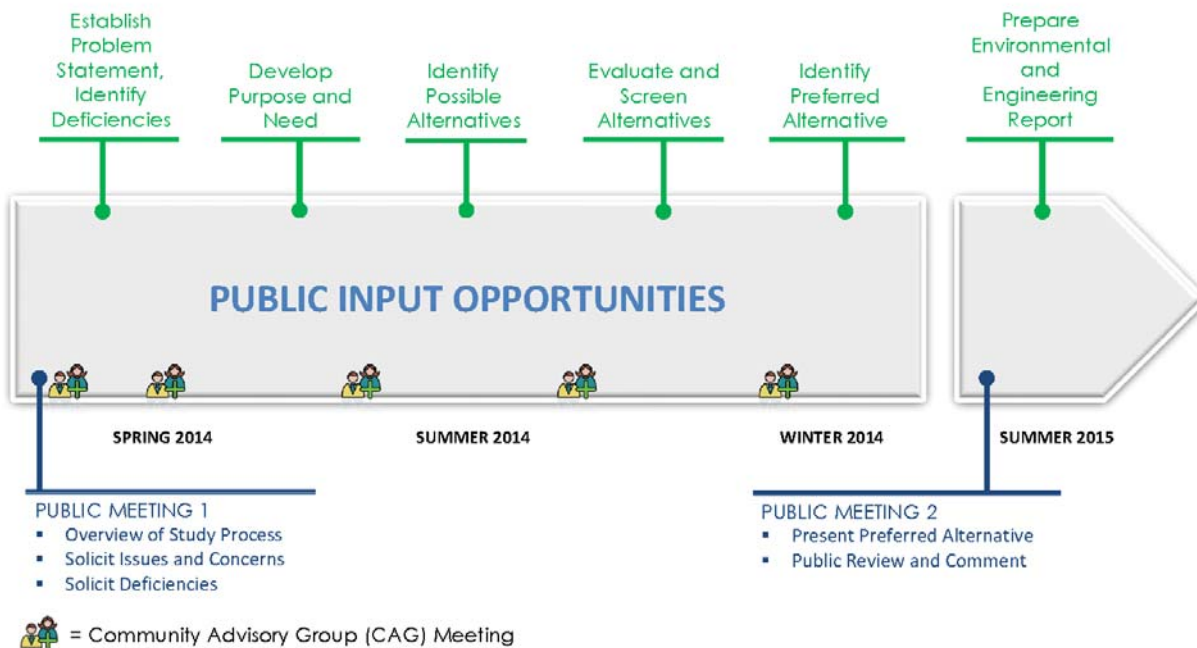


Figure 3. Public Input Opportunities

**YOUR INPUT IS IMPORTANT.
WE WANT TO HEAR FROM YOU!**

Submitting your comments is as easy as 1, 2, 3!

1. IN PERSON

Submit written comments today
or
Submit a CAG Application Form

2. MAIL

Illinois Department of
Transportation, District 2
819 Depot Avenue
Dixon, IL 61021-3500
Attention: Kevin Henson

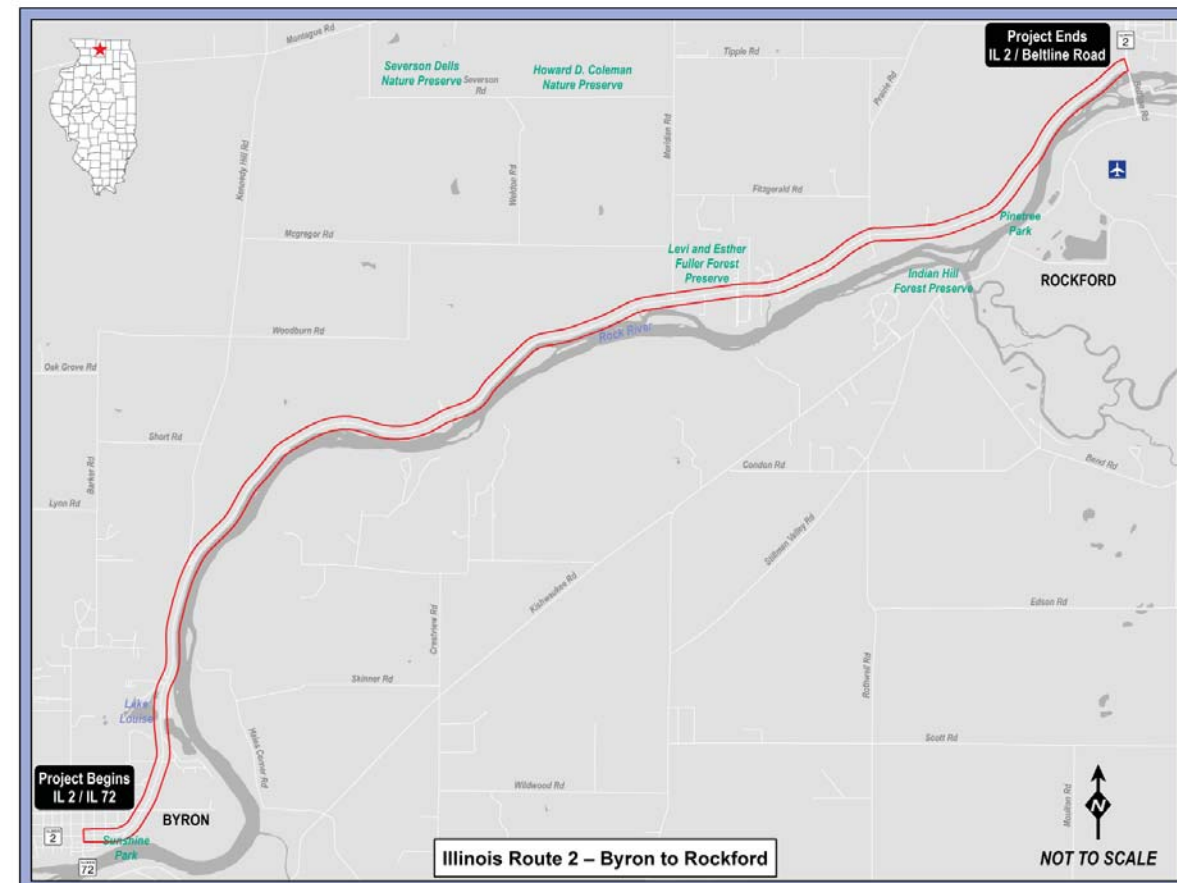
3. ONLINE

At project website:
[www.dot.il.gov/IL2IL72/
getinvolved.html](http://www.dot.il.gov/IL2IL72/getinvolved.html)

All Public Meeting materials presented are available on the project website: www.dot.il.gov/IL2IL72/index.html

If you have questions regarding this public meeting please contact: **Masood Ahmad 815.284.5351**

COMMENTS DUE BY: MAY 21, 2014



WELCOME TO THE PUBLIC MEETING!

IL Route 2 from IL Route 72 in Byron to Beltline Road south of Rockford is currently a two lane road. Over the years, traffic volumes have increased along this route. Increased traffic volumes combined with roadway configuration and condition have negatively affected traffic mobility and safety. The focus of the Phase I study for IL Route 2 is to evaluate reconstruction alternatives to accommodate future traffic and to improve safety.

There are social, economic, and environmental concerns within the project corridor. The concerns include, but are not limited to, crashes, capacity, drainage, the Rock River, and accommodations for bicyclists and pedestrians.

Figure 1 below describes the three phases that a project goes through. The IL Route 2 study is currently in Phase I. Phase I details the preliminary engineering and evaluates for potential impact to the environment. An important aspect of the Phase I process is the public input and involvement.

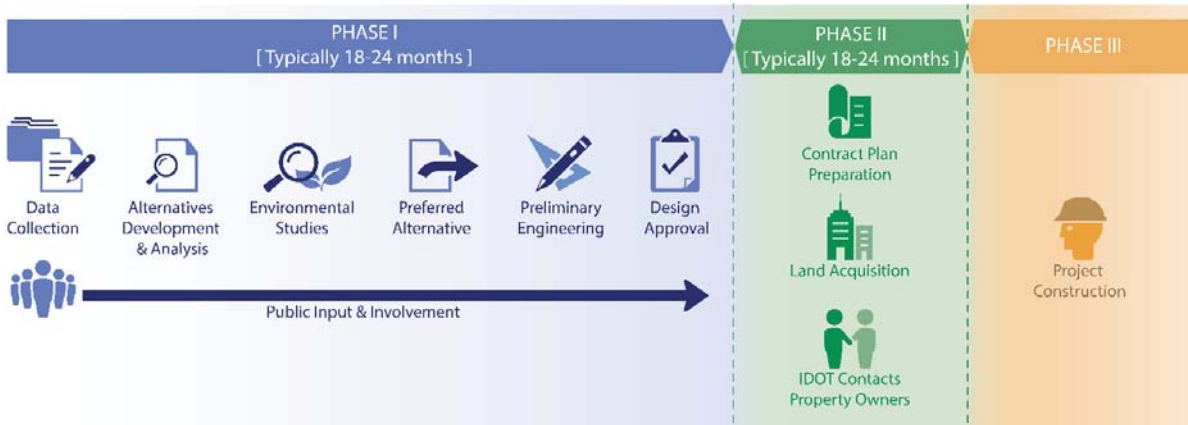


Figure 1. Project Phase Transitions

PROJECT DATA [Reference Project Map - Figure 2]

The study extends approximately 10.5 miles from IL Route 72 in Bryon to Beltline Road south of Rockford. Existing traffic ranges from 8,250 to 10,200 vehicles per day of which 5% of the traffic is trucks. The projected 2025 traffic will range from 9,100 to 11,300 vehicles per day. The road is currently two lanes.

There are two railroad bridges and three roadway bridges within the project corridor. The vertical clearance of the railroad bridges is substandard.

Over 266 crashes occurred over the five year period from 2008 to 2012. The intersections with the highest occurrence of crashes were IL Route 72 with 19 crashes and Beltline Road with 18 crashes. Of the 19 crashes at IL Route 72, two were injury related and two property damage only crashes. The 18 crashes at Beltline Road resulted in 3 injury related and one property damage only crash. Over the 10.5 mile corridor the section of Kennedy Hill Road to Meridian Road has the highest occurrence of crashes with 91. Of the 91 total crashes, 2 involved fatalities, 16 involved injury, and 3 crashes had property damage only. The sections of Ashelford Drive to Kennedy Hill Road and Prairie Road to Beltline Road each also had a fatality crash. In 2006, a Federal requirement directed states to create a Highway Safety Improvement Program that documents the top 5% of its locations that exhibit the most severe safety needs. Three sections along the project corridor were identified as 5% locations in 2012. The sections are:

1. Ashelford Drive to Kennedy Hill Road
2. 2 miles north of Kennedy Hill Road to the Winnebago County Line
3. East of Prairie Road to west of Beltline Road

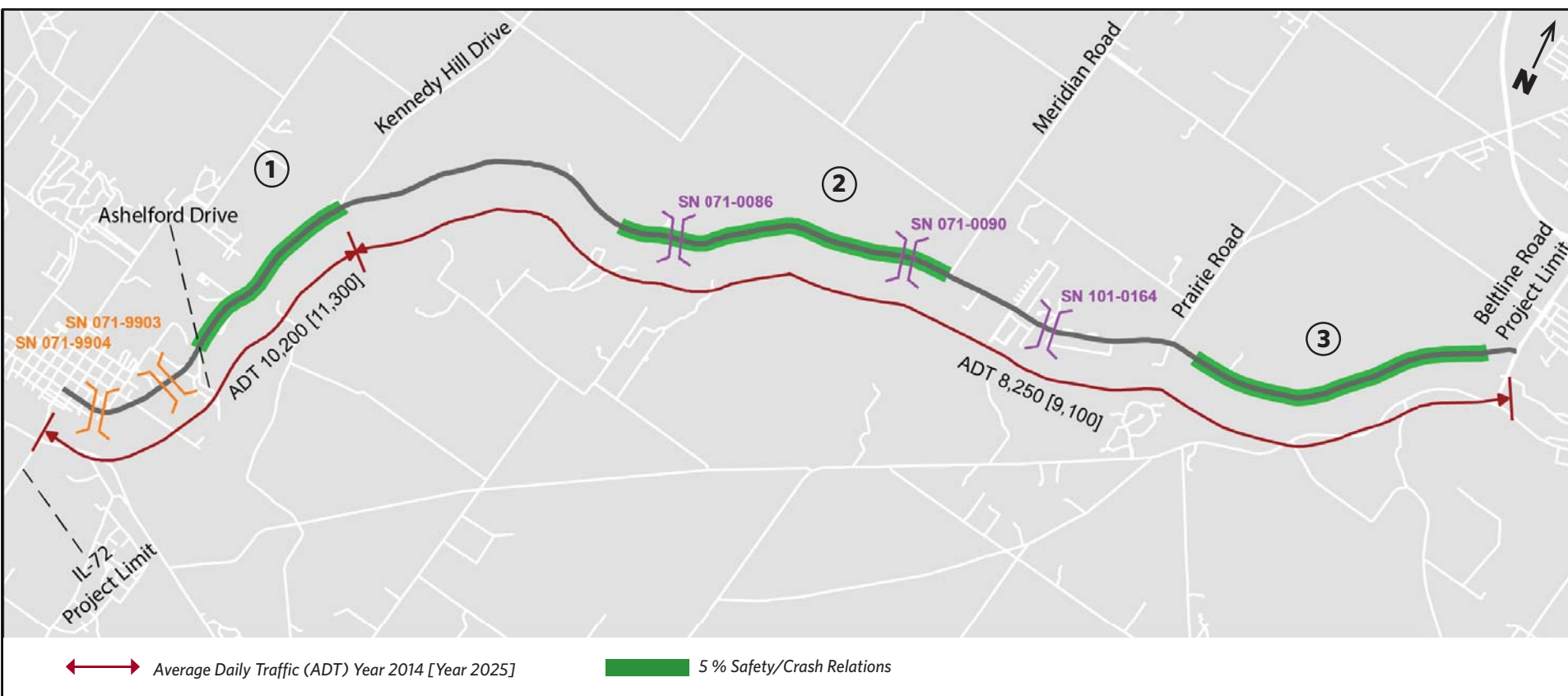


Figure 2. Project Data Map

- Railroad Bridges**
- SN 071-9904
 - Feeder line to the Byron Nuclear Plant
 - Height Clearance is 14'-1"
 - SN 071-9903
 - Canadian Pacific Railroad
 - Height Clearance is 14'-10"
- Roadway Bridges**
- SN 071-0086
 - IL 2 over Mosquito Creek
 - 1.84 miles south of Meridian Rd.
 - Bridge Roadway width is 40'
 - SN 071-0090
 - IL 2 over a stream
 - 0.27 miles south of Meridian Rd.
 - Bridge Roadway width is 39.4'
 - SN 101-0164
 - IL 2 over a drainage ditch
 - 0.74 miles north of Meridian Rd.
 - Bridge Roadway width is 70'