

IL 38 OVER I-39 Phase I Study

Online Public Meeting

Welcome!

The Project Presentation will begin Shortly

While you are waiting, please remember:

- Participants cameras and microphones are turned off
- This meeting will be recorded for project documentation
- Questions/comments may be submitted at any time and will be addressed at the end of the meeting
- Instructions on how to submit questions and comments will be provided shortly
- If you are having difficulty with your audio, please use the call-in number:

1-309-205-3325
86350747028#



Christopher B. Burke Engineering, Ltd.

Illinois Route 38 at Interstate 39 Phase I Engineering Study



<https://idot.illinois.gov/transportation-system/transportation-management/featured-projects/index>

Online Public Meeting – May 3, 2023 @ 6:00 PM



Presenters and Panelists



Michael Kuehn, P.E.
IDOT



Steven Robery, P.E.
IDOT



Kristina Kuehling
Images, Inc.



Peter Harmet, P.E.
CBBEL



Melissa McGhee, P.E.
CBBEL

Meeting Agenda

I. Meeting Guidelines

II. How to use Zoom

III. Project Presentation

- Overview
- Purpose and Need
- Alternatives Considered
- Preferred Alternative Details
- Q&A Session

V. Next Steps



<https://idot.illinois.gov/transportation-system/transportation-management/featured-projects/index>

IL 38 OVER I-39 Phase I Study

Public Information Meeting Guidelines

Comments
received by
May 17th will be
included in the
Public Meeting
record.

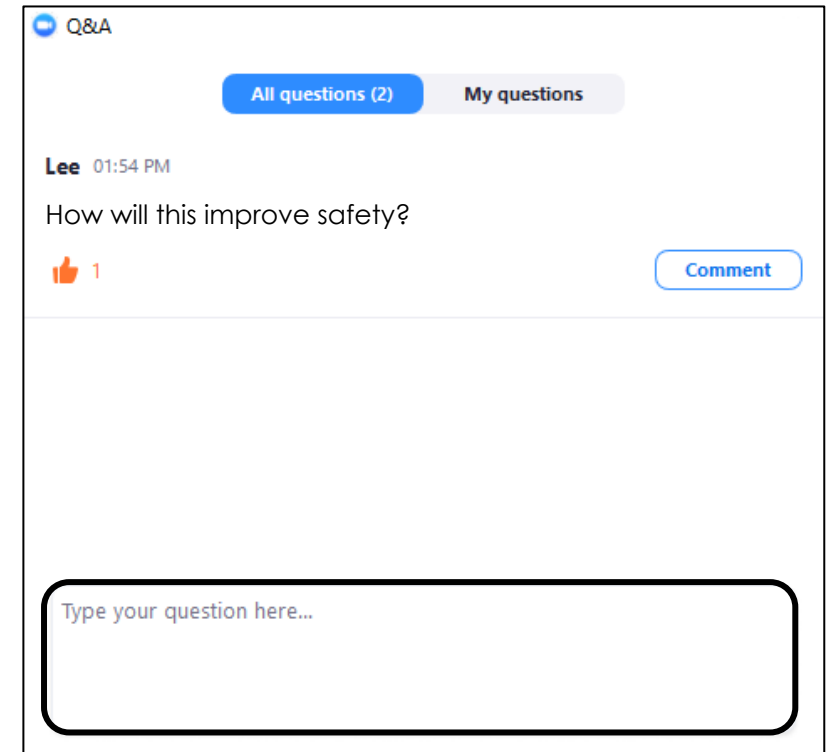
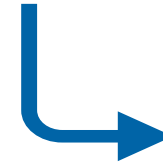
- This meeting will be recorded for project documentation
- Questions and comments may be submitted using the Q&A Feature
- For more detailed inquiries, please contact the project team through the IDOT website
- If your question requires further research, it will be answered after the meeting

How to use Zoom

**Submit questions
and comments**
via the Q&A feature!
A Q&A session will be
held at the end.



Click “Q&A” to expand
window and type a
question or comment



Overview

- Located in the City of Rochelle, Dement Township and in Ogle County
- Includes the section of IL 38 from Dement Road to the I-39 Interchange



IDOT Project Development Process

WE ARE HERE

PHASE I

Preliminary
Engineering and
Environmental
Studies

2020-2023

PHASE II

Contract Plan
Preparation &
Land Acquisition

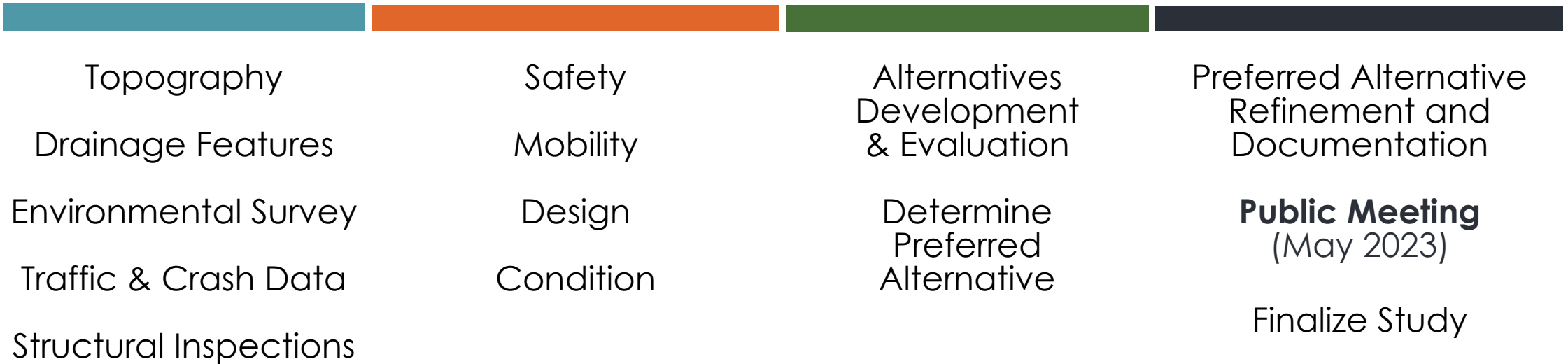
2023-2024

PHASE III

Construction

**Funding included in IDOT's
Multi-Year Program**
Construction Schedule
not yet established

Phase I Process



Project Purpose and Need

Purpose and Need

Safety: Intersection crashes



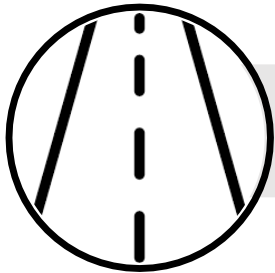
Mobility: High truck percentage



Design: Standards from the 1970's



Condition: Constructed in the early 1980's

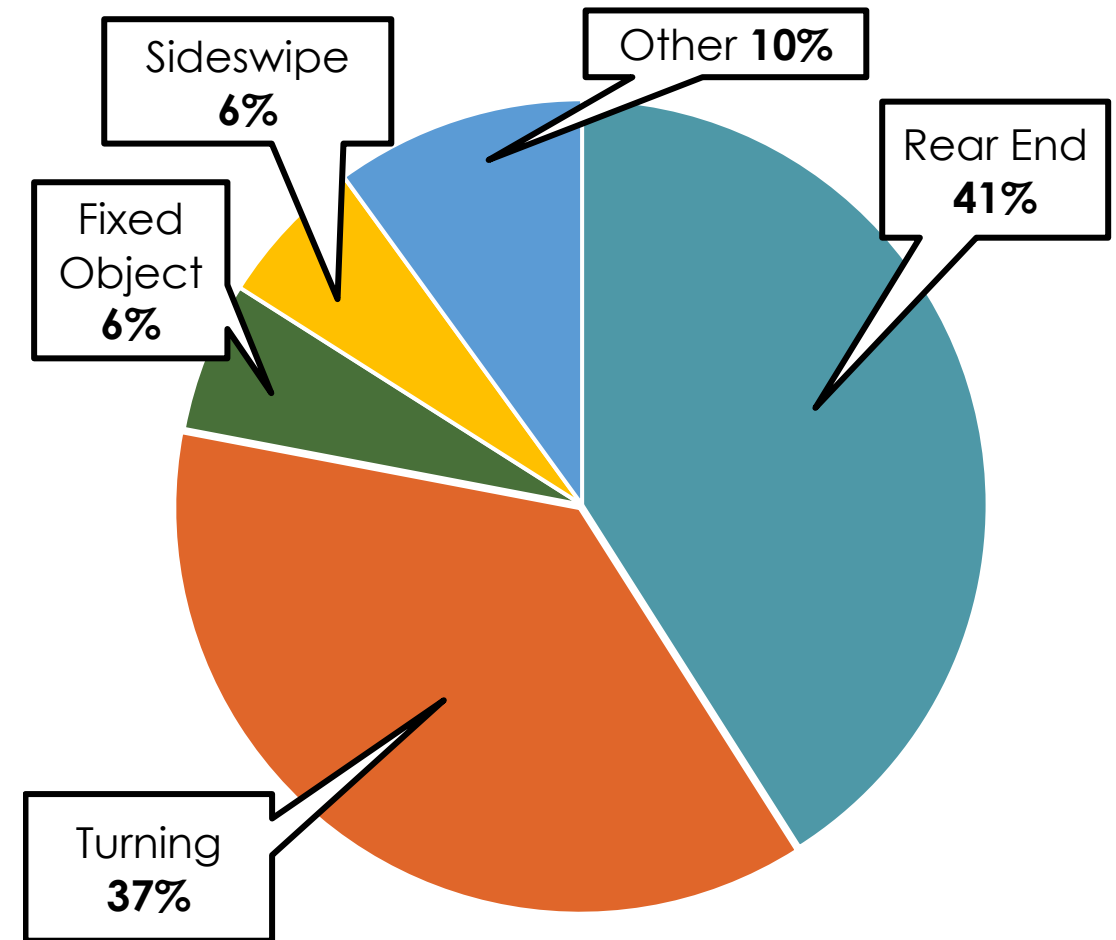


Transportation Needs Safety

IL 38: 49 Crashes, 9 Injuries

- Rear end and turning crashes
- Angle crashes at west ramp intersection

I-39: No substantive safety issues identified



Transportation Needs Mobility

IL 38:

- Existing: 7,000 to 14,000 vehicles per day (vpd)
 - ✓ Up to 55% Trucks
 - ✓ Congested left turn movements
- Projected: 8,000 to 15,000 vpd
- Traffic Signal Warranted at I-39 West Ramp Intersection

No capacity issues identified on I-39 within the study area



Transportation Needs Design

- Roadway widths inadequate for turning trucks
- Lane configurations less efficient
- Gaps in sidewalk/path system
- Non-ADA compliant features



Transportation Needs Condition

IL 38 Pavement

- Replacement and Repair



IL 38 Bridge

- Deck Replacement
- Repairs



Creston Ditch Culvert

- Partial replacement
- Repairs

Alternatives Considered

Alternatives Considered

Alternative One

- Conventional Diamond interchange
- New signal at west ramp intersection

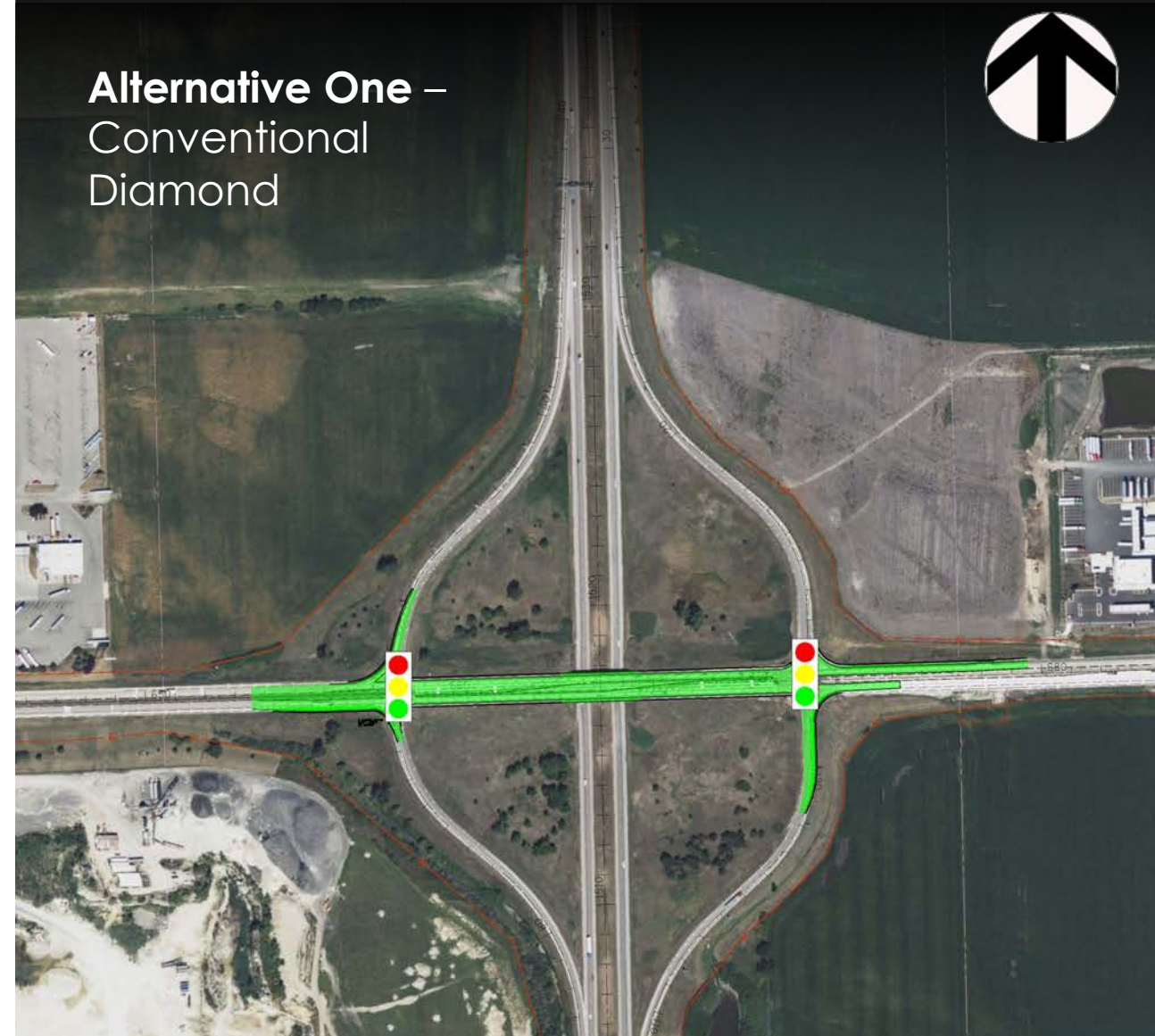
Advantages

- Lower impacts

Disadvantages

- Most conflict points
- Requires bridge widening
- Highest cost

Alternative One – Conventional Diamond



Alternatives Considered

Alternative Two

- Construct Diverging Diamond Interchange
- New signal at west ramp intersection

Advantages

- Lower impacts
- Reduces conflict points
- Provides high mobility
- Bridge widening not required

Disadvantages

- Second highest cost

Alternative Two – Diverging Diamond



Alternatives Considered

Alternative Three

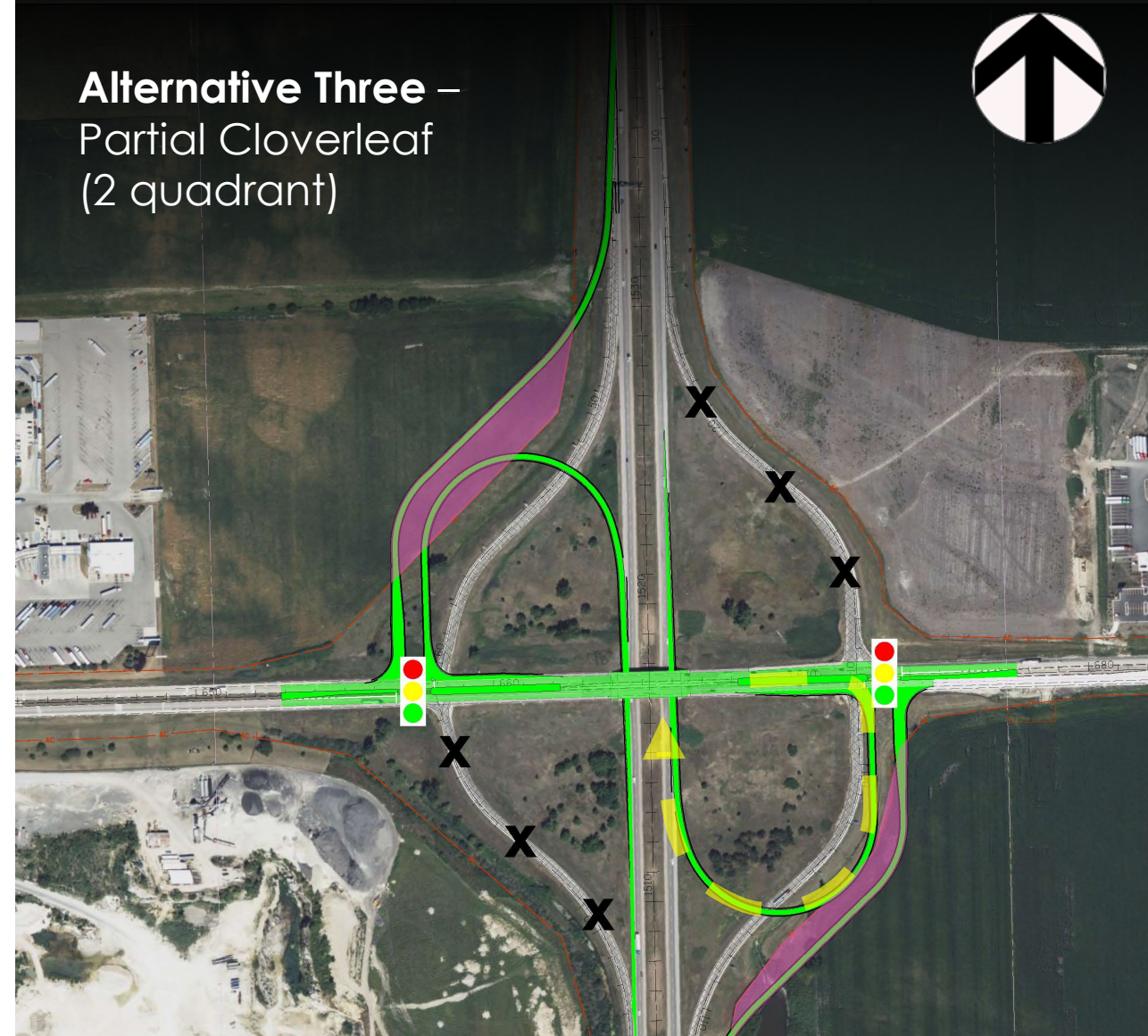
- Partial Cloverleaf Interchange – Two Quadrant
- New signal at west ramp intersection

Advantages

- Converts a heavy left turn to a right turn
- Bridge widening not required

Disadvantages

- Higher impacts
- Conflict points not reduced



Alternatives Considered

Alternative Four

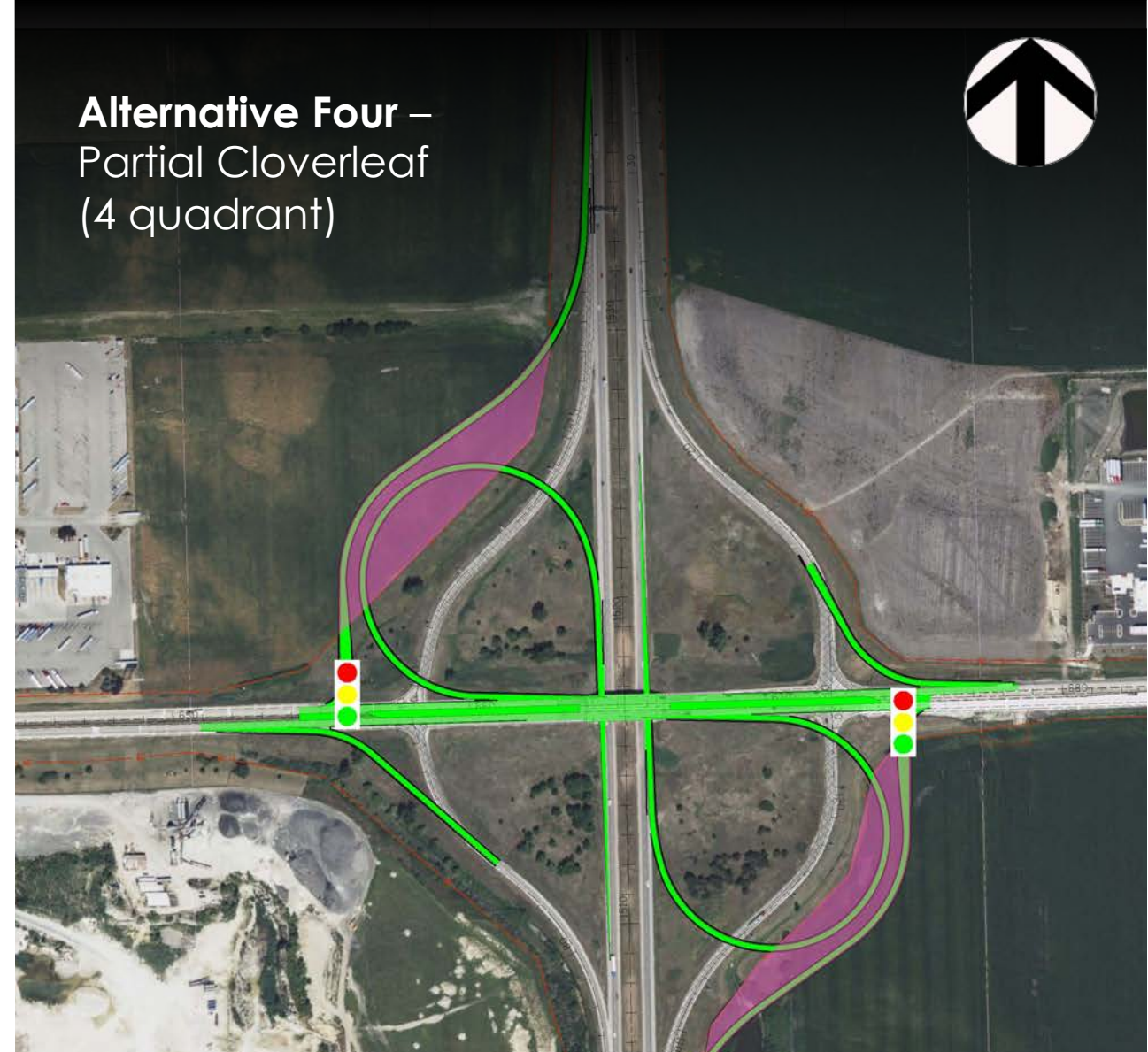
- Partial Cloverleaf Interchange – Four Quadrant
- New signal at west ramp intersection

Advantages

- Reduces conflict points
- Provides high mobility
- Bridge widening not required

Disadvantages

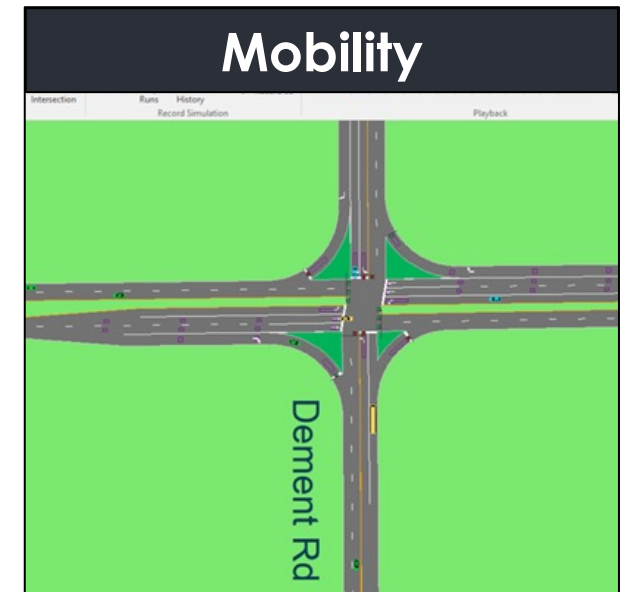
- Higher impacts



Evaluation Criteria

- Safety
- Mobility
- Impacts
- Estimated construction cost

No distinguishing environmental issues were identified



Preferred Alternative – Alternative Two

Diverging Diamond Interchange

Alternatives Evaluation Summary:

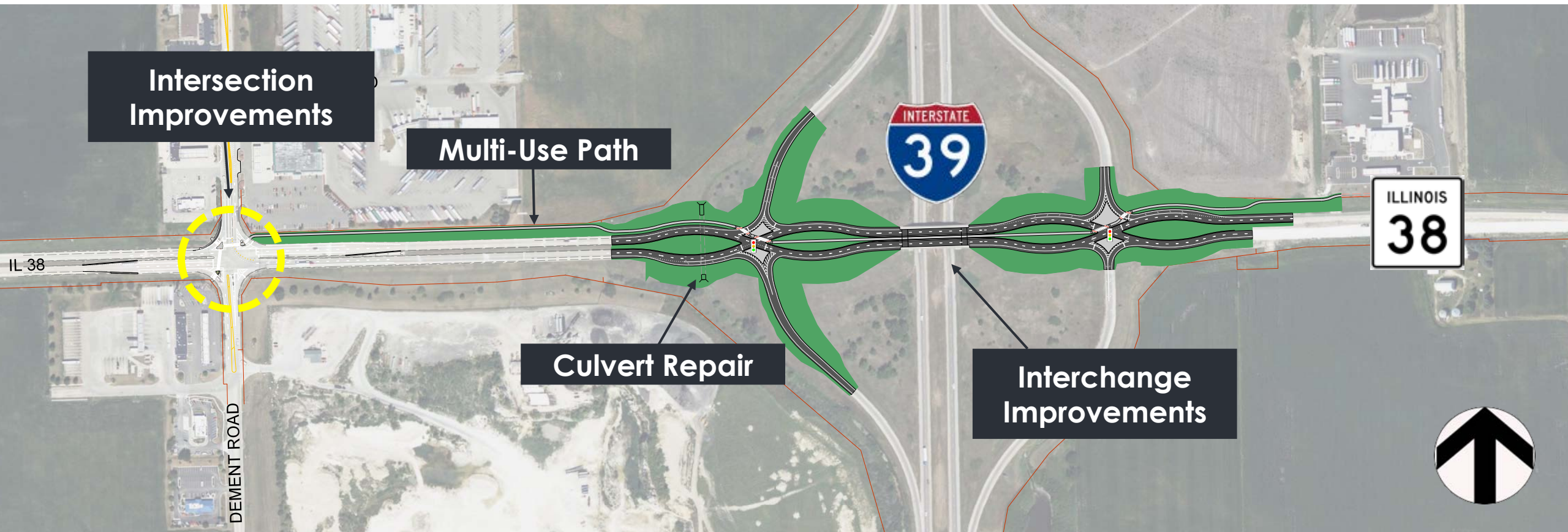
- DDI has best combination of improved safety and mobility, with low impacts.
- Slightly higher estimated construction cost was offset by DDI benefits



Alternative Two – Diverging Diamond

Preferred Alternative Details

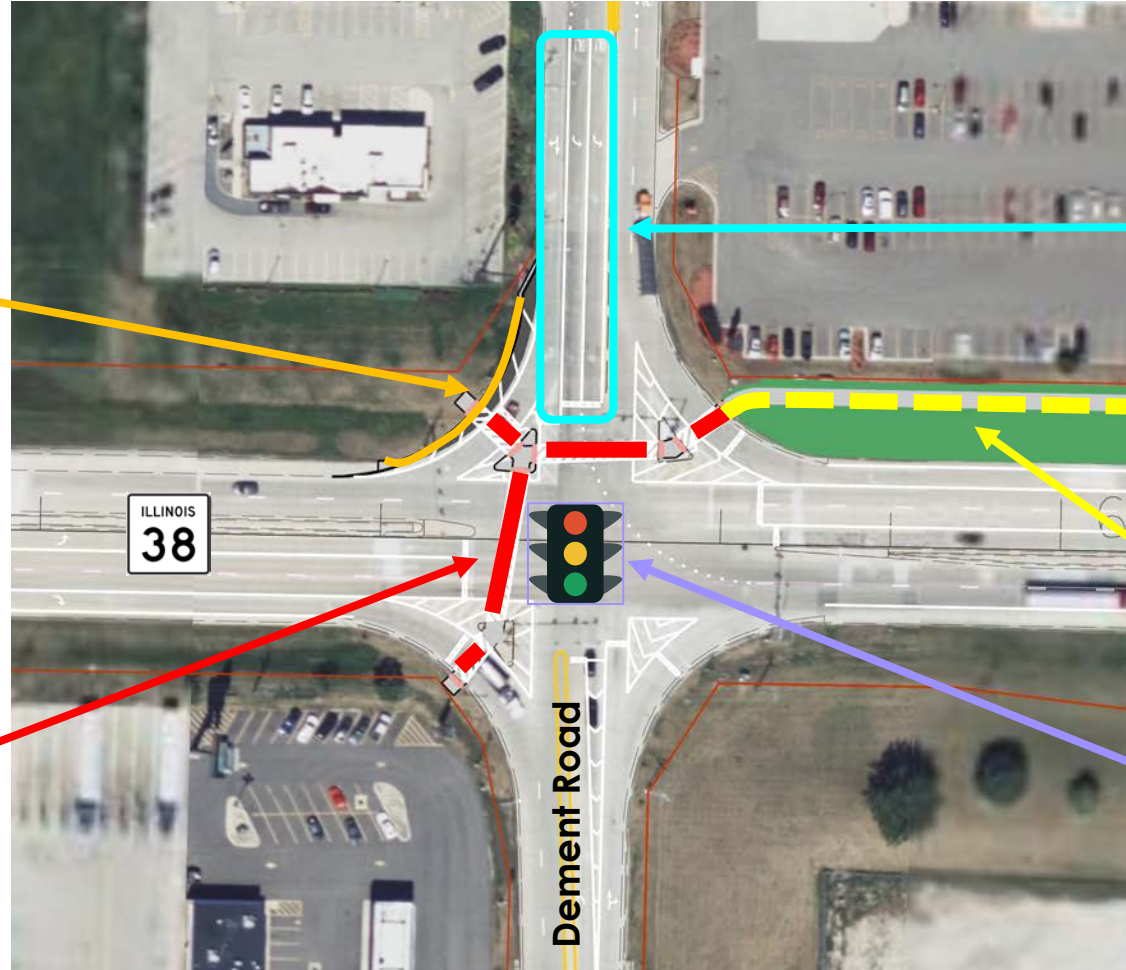
Preferred Alternative Overview



Proposed Improvements – Dement Road

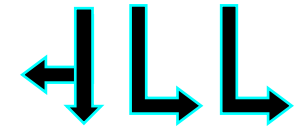
Widen Northwest
Corner to
Accommodate
Future Right
Turn Lane

ADA Compliant
Crosswalks and
Landing Areas



Restripe North Leg

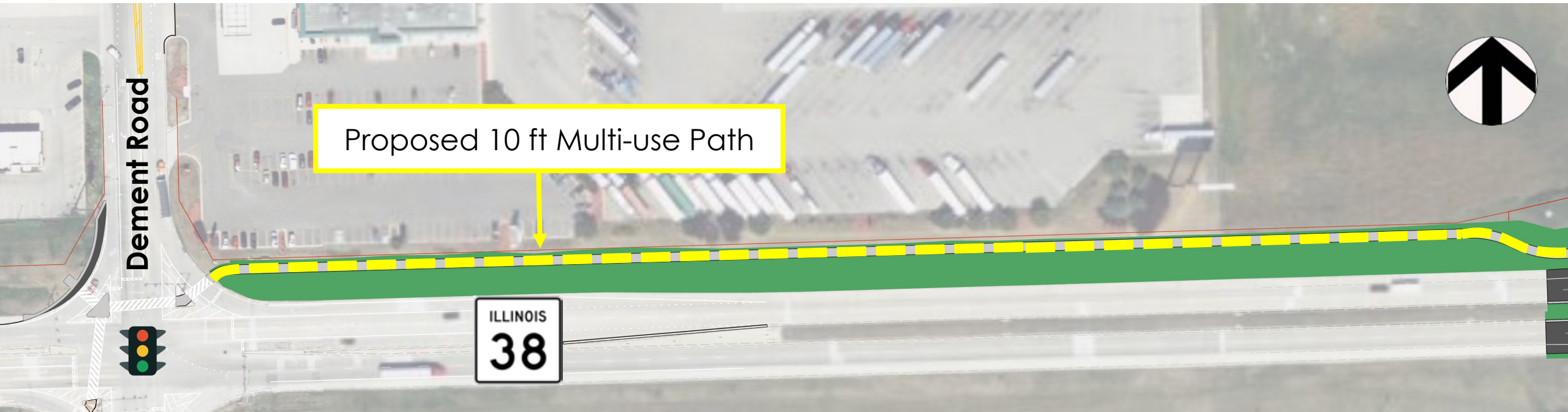
- Provide Exclusive SB Dual Left Turn Lanes
- Provide SB through/right turn lane



10-foot Multi-Use Path

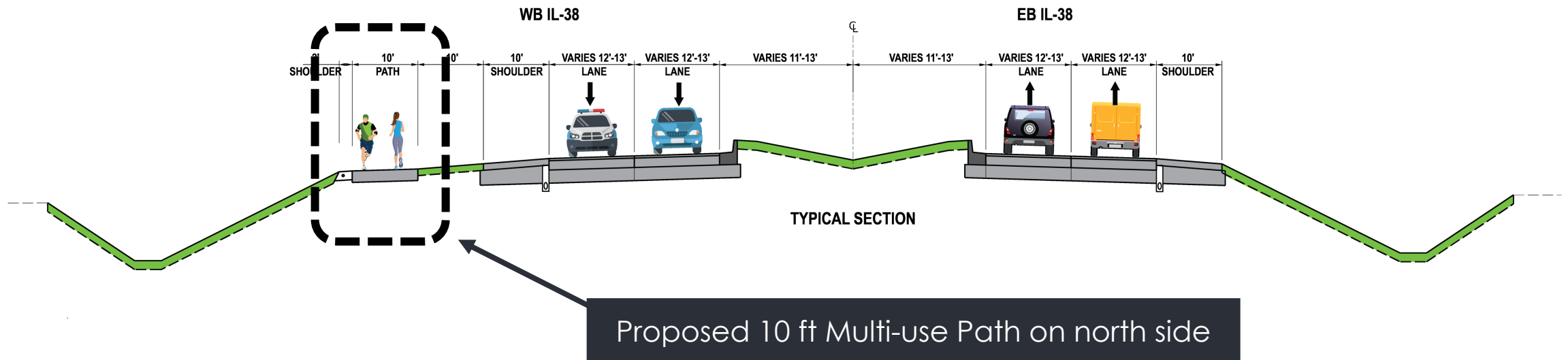
Traffic Signal Modernization

Proposed Improvements – Multi-Use Path



Proposed Improvements – Multi-Use Path

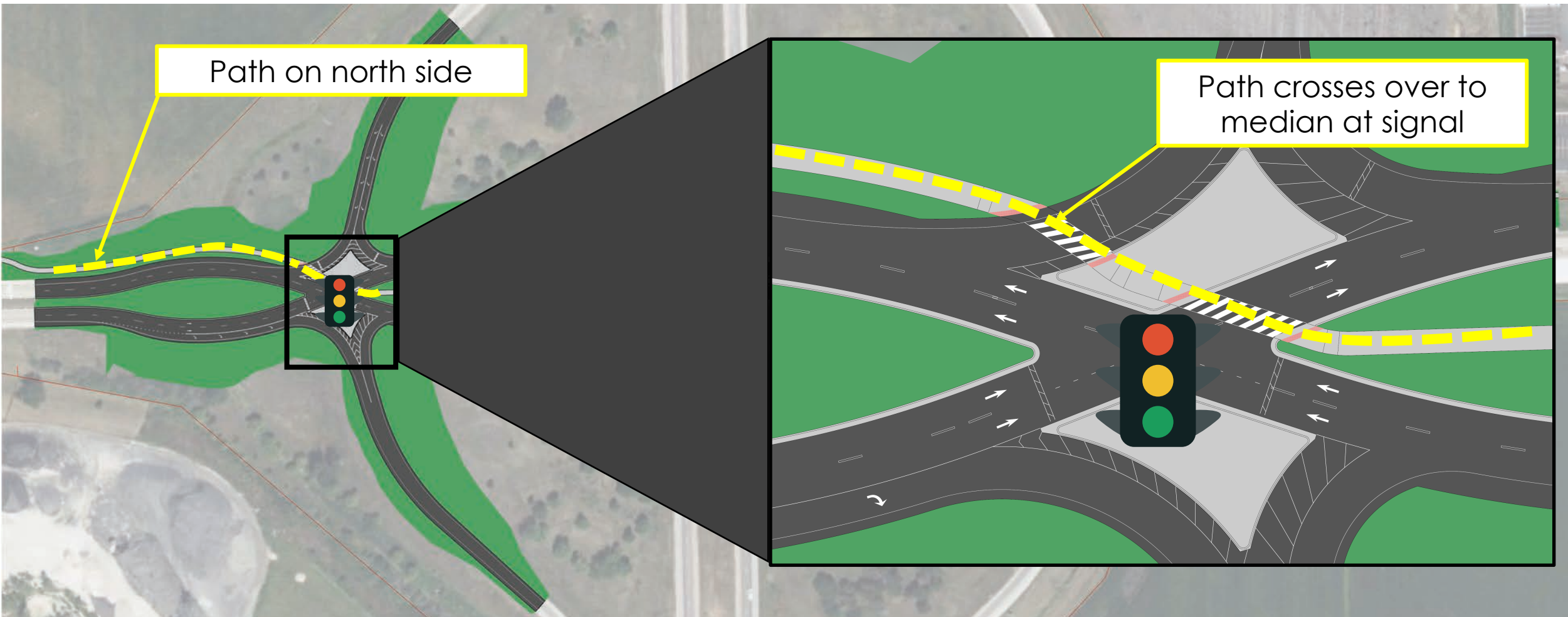
IL 38 Cross Section – Looking East



Proposed Improvements – Multi-Use Path

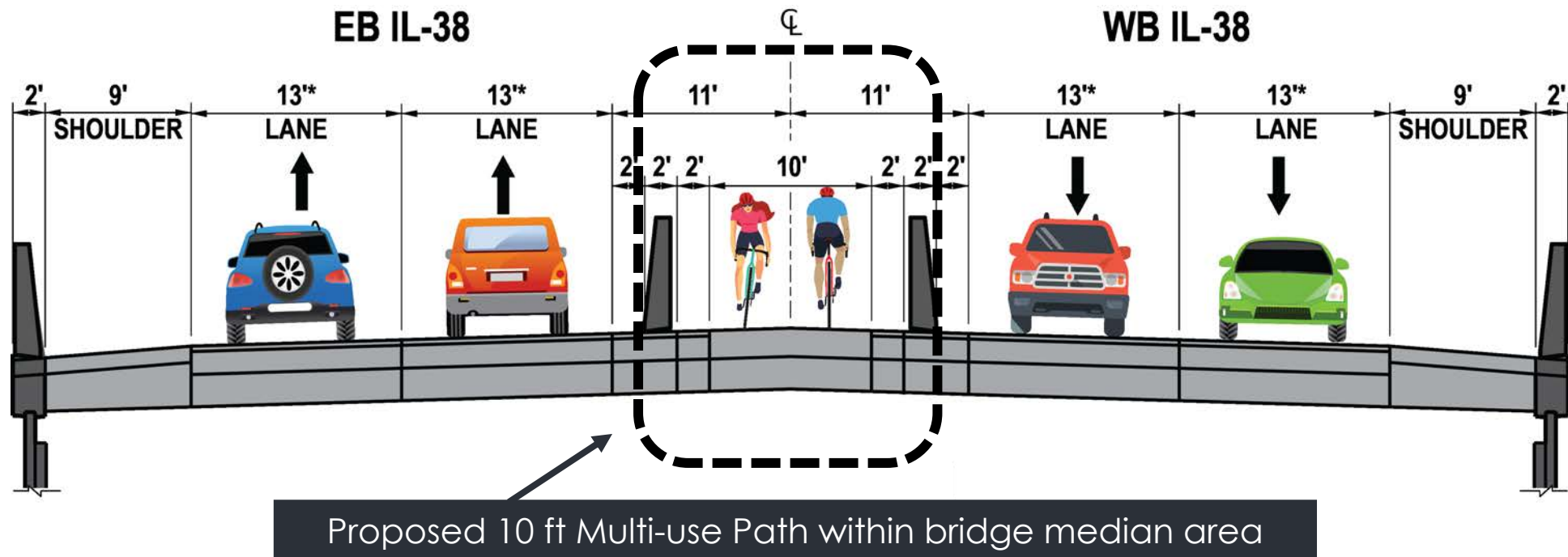


Proposed Improvements – Multi-Use Path

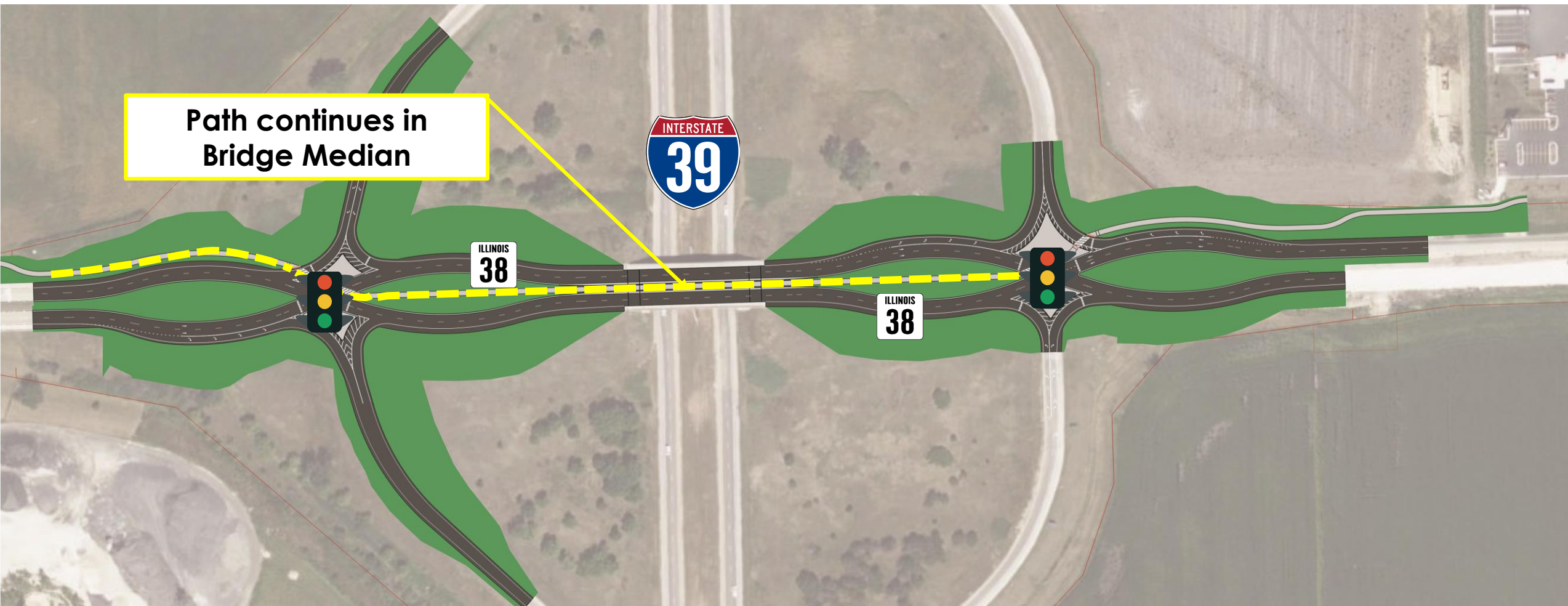


Proposed Improvements – Multi-Use Path

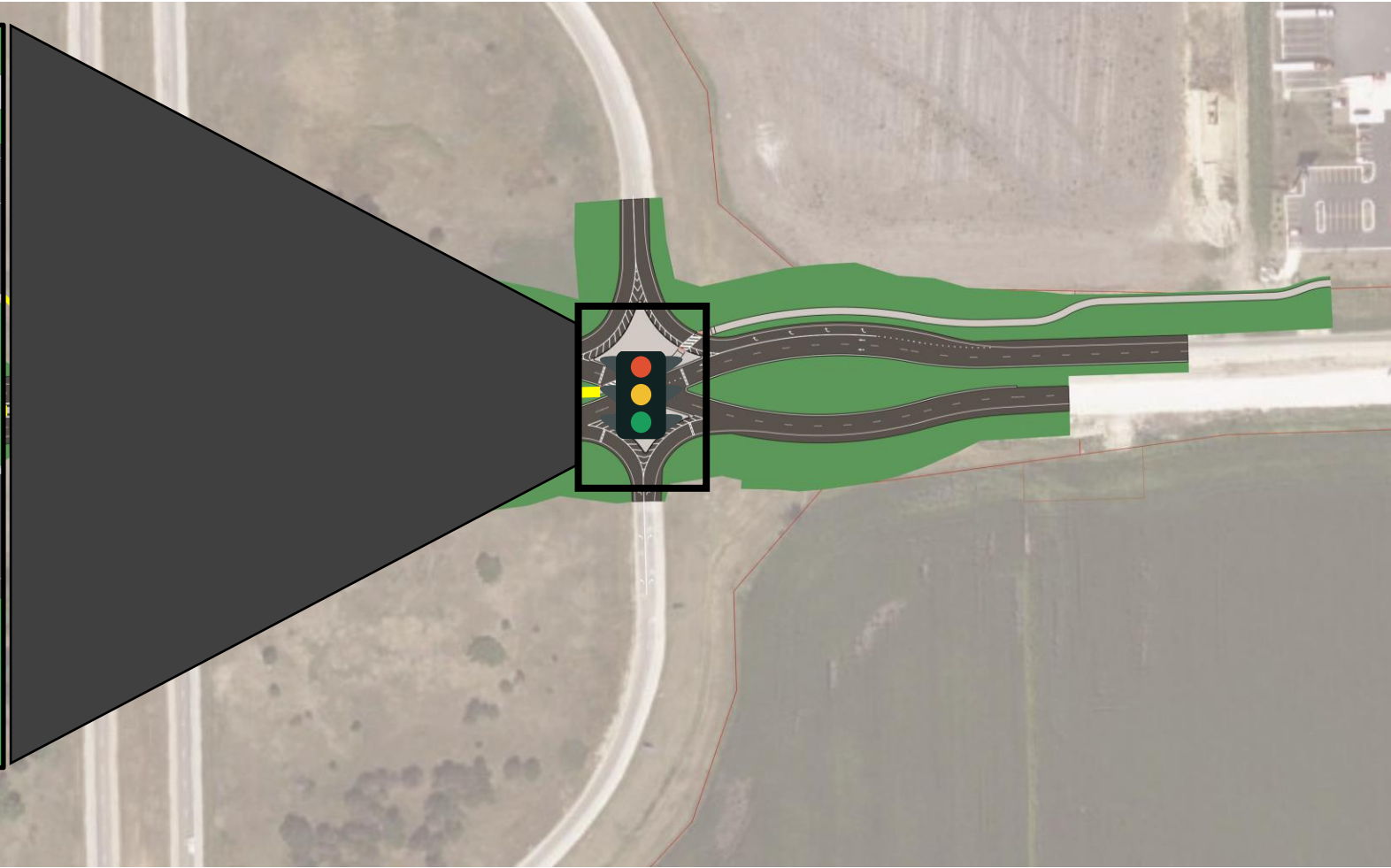
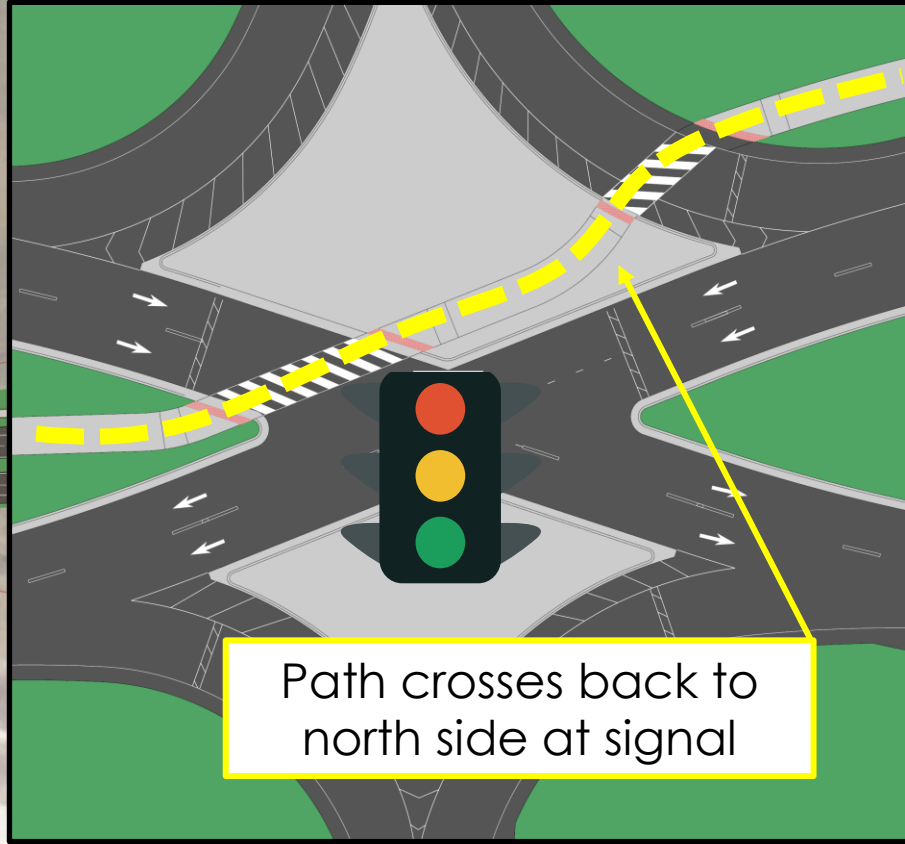
IL 38 Cross Section – Looking East



Proposed Improvements – Multi-Use Path



Proposed Improvements – Multi-Use Path



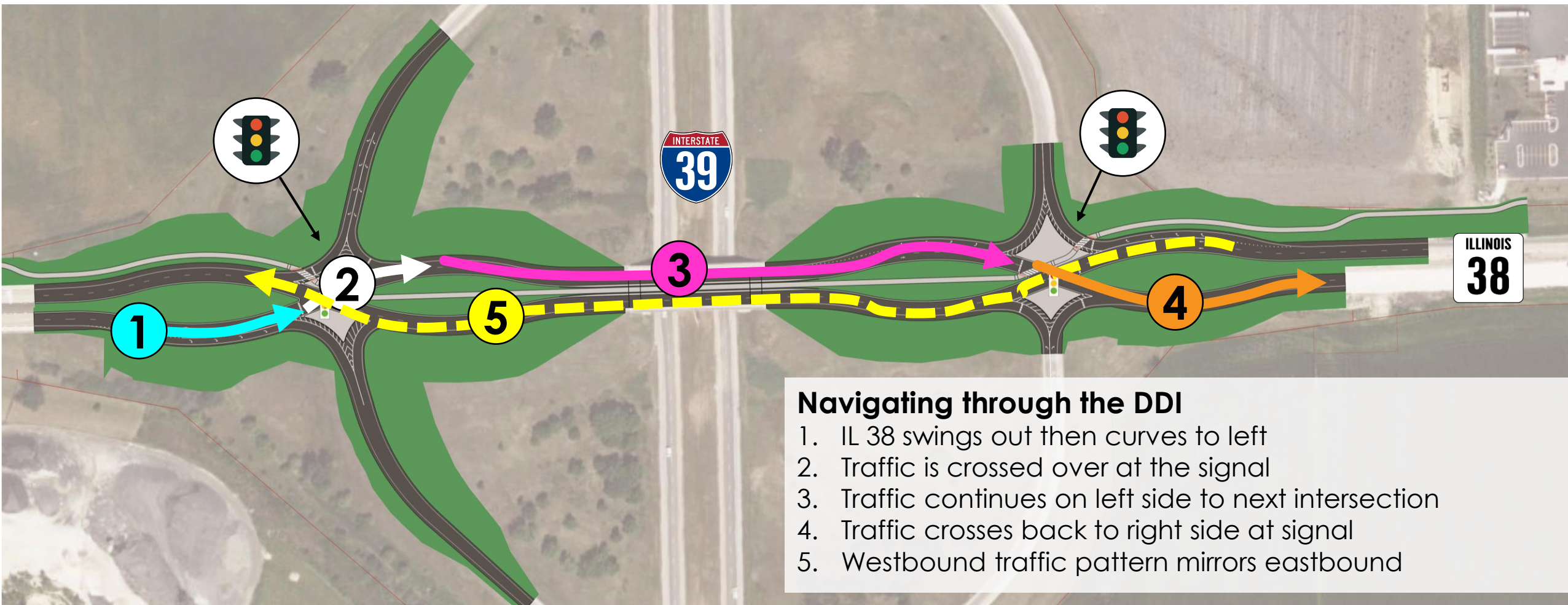
Proposed Improvements – Multi-Use Path



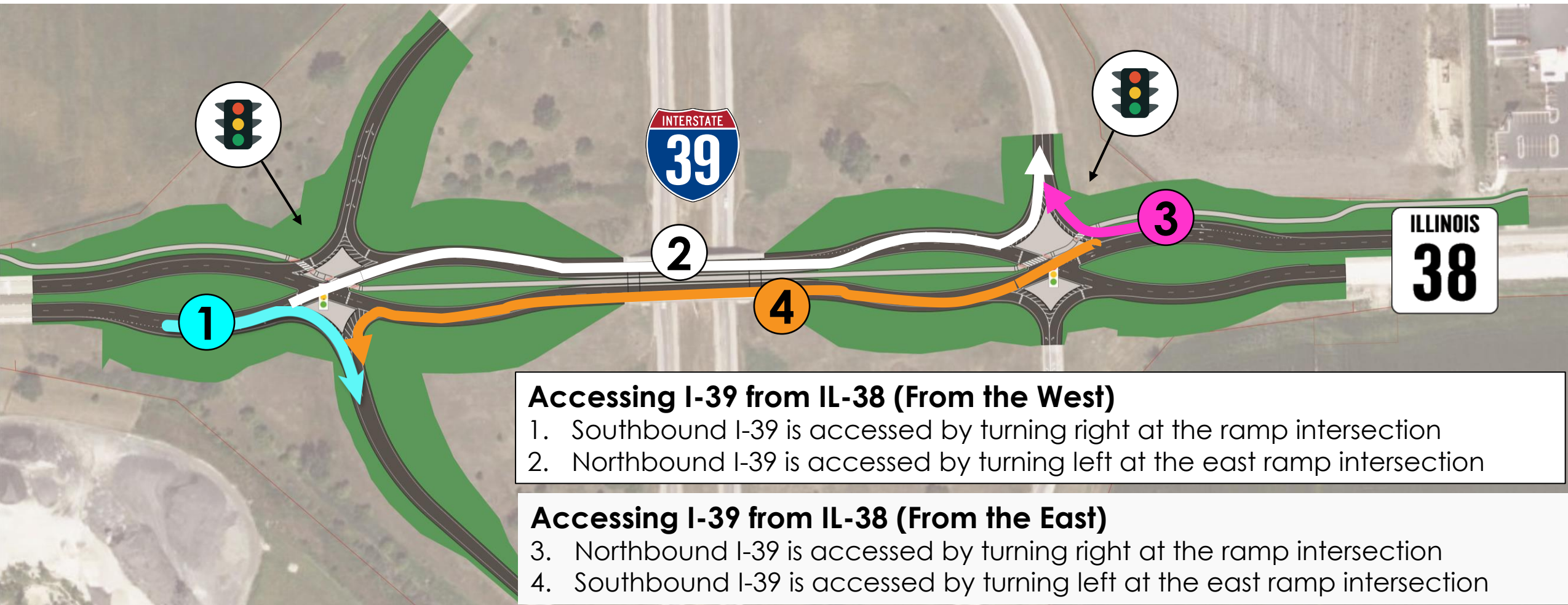
Path connects to existing sidewalk at Pilot Station

IL 38 project matches recent widening at Pilot Station

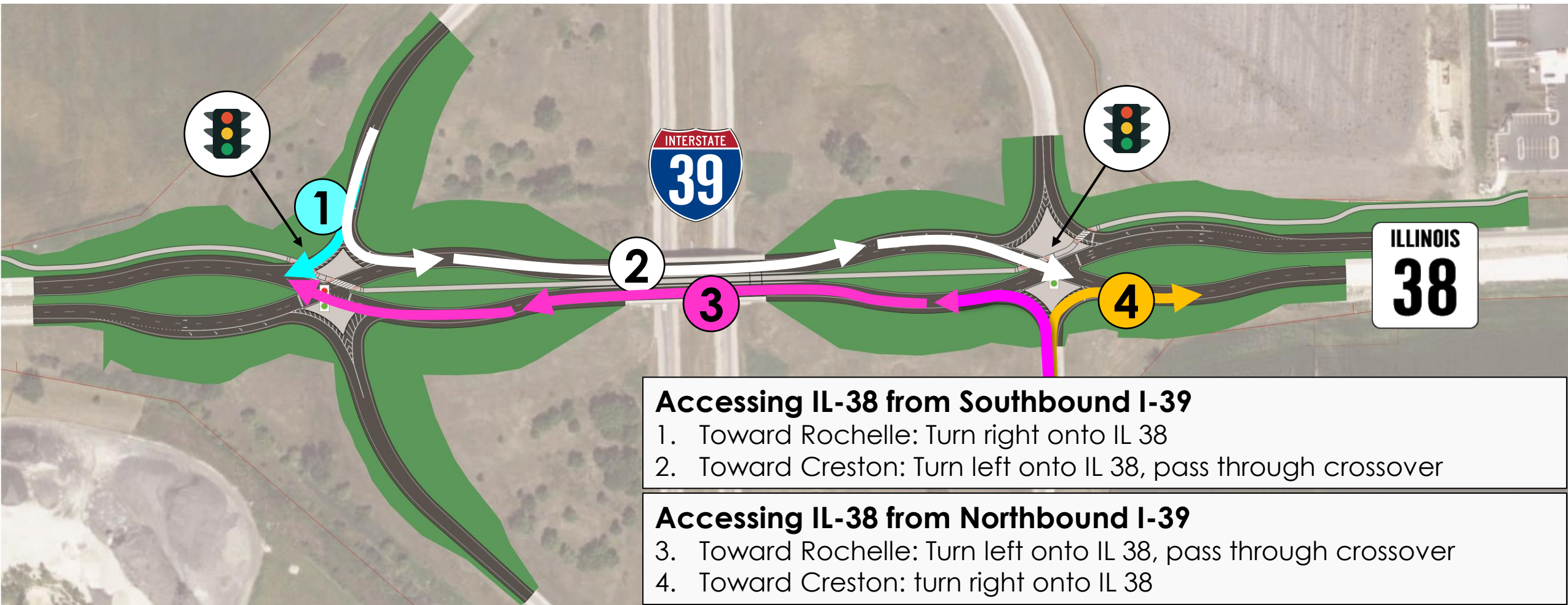
Proposed Improvements – DDI Interchange



Proposed Improvements – DDI Interchange

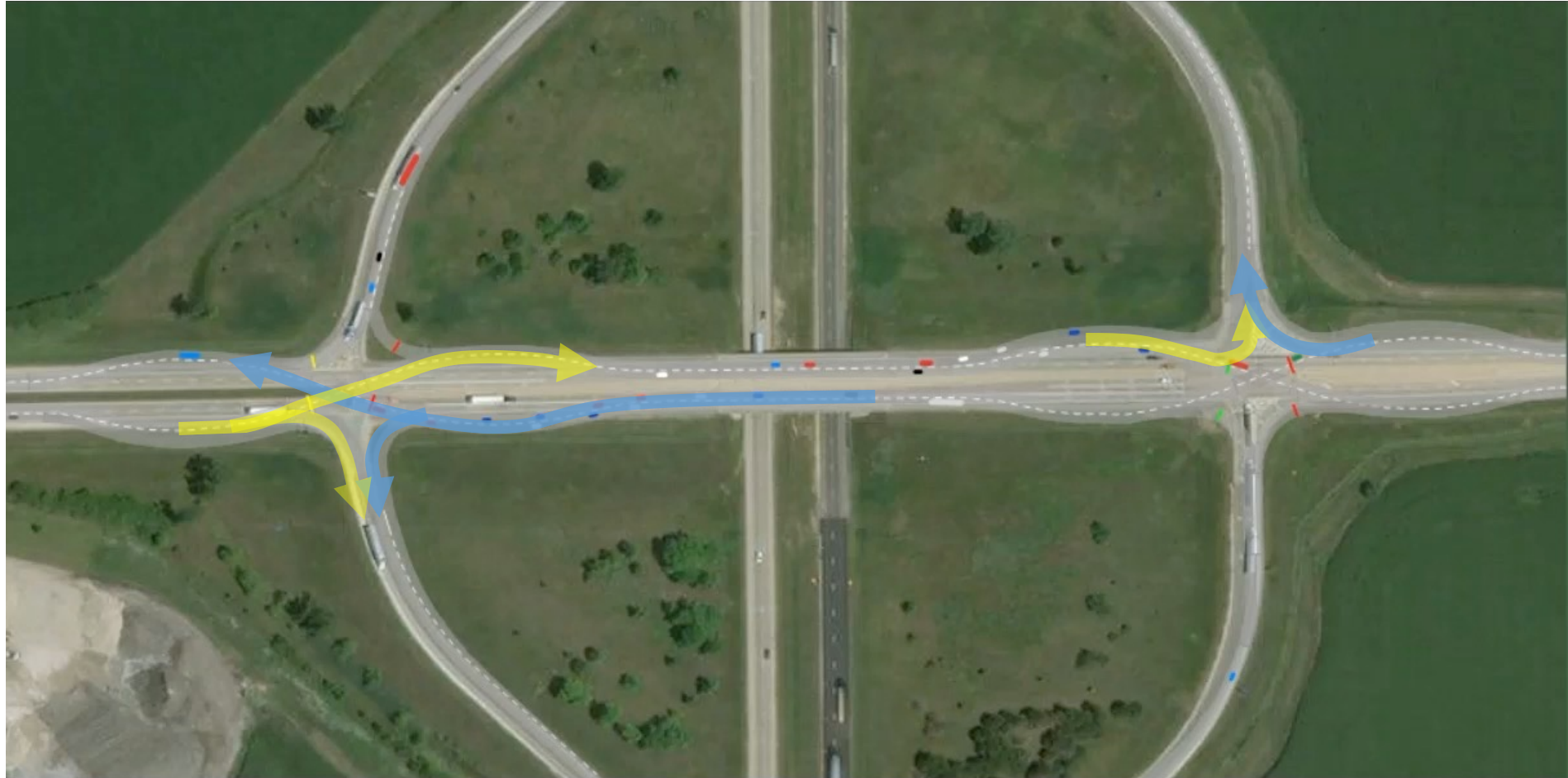


Proposed Improvements – DDI Interchange



Diverging Diamond Interchange Operations

PM Traffic

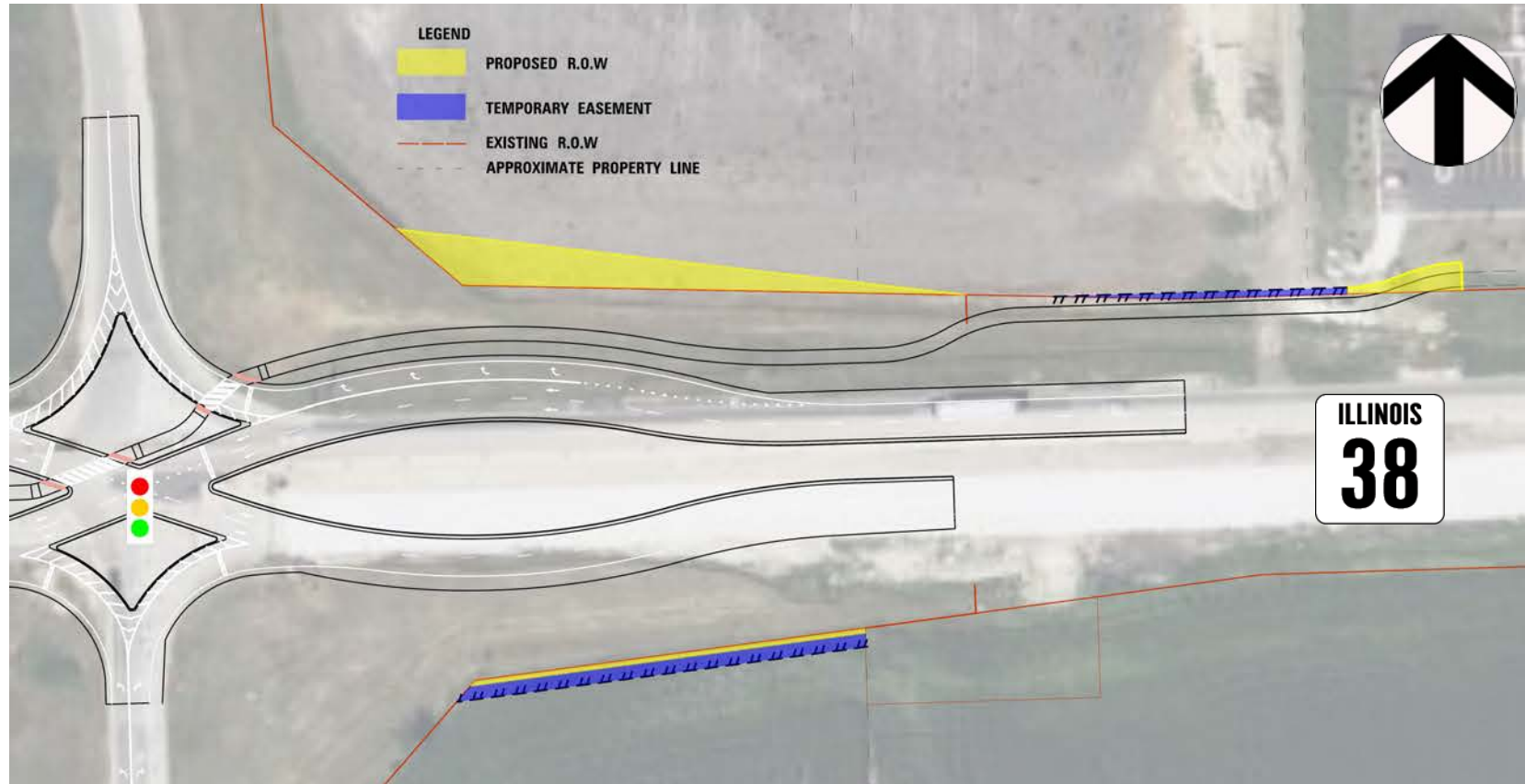


Preferred Alternative: Estimated Right-of-Way



Proposed ROW Requirements will be refined following this meeting and shared with affected property owners.

Preferred Alternative: Estimated Right-of-Way



Proposed ROW Requirements will be refined following this meeting and shared with affected property owners.

Preferred Alternative Summary

Safety

Left turn conflict points eliminated

Better sight distance at turns

Safer bike/pedestrian crossings

Up to 60% reduction in fatal/injury crashes (before/after studies)

Operations

Lower (safer) speeds

Shorter cycle lengths

Better coordination between traffic signals

Mobility

High capacity within compact footprint

Ample space for stacked vehicles

Impacts

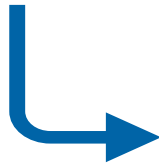
Minor right-of-way, wetland and floodplain impacts

Question & Answer Session

Q&A *How to submit a question or comment*



Click “Q&A” to expand window and type a question or comment

A screenshot of the Q&A interface. At the top, it says 'Q&A' with a blue speech bubble icon. Below that are two tabs: 'All questions (2)' in a blue box and 'My questions' in a grey box. A question is listed: 'Lee 01:54 PM' followed by 'How will this improve safety?'. Below the question is a thumbs up icon with the number '1' and a blue 'Comment' button. At the bottom of the window is a large text input field with the placeholder text 'Type your question here...'.

Q&A

All questions (2) My questions

Lee 01:54 PM

How will this improve safety?

1

Comment

Type your question here...

**Submit questions
and comments**
via the Q&A feature!

Presenters and Panelists



Michael Kuehn, P.E.
IDOT



Steven Robery, P.E.
IDOT



Kristina Kuehling
Images, Inc.



Peter Harmet, P.E.
CBBEL



Melissa McGhee, P.E.
CBBEL

IL 38 at I-39 Interchange Phase I Study

If you have additional comments, please submit them by **May 17, 2023**, to be included in the Public Meeting Record. Questions and comments can be submitted in several ways:

Via IDOT Website

<https://idot.illinois.gov/projects/illinois-38-over-interstate-39-interchange-project.html>



Click on “Get Involved” tab and select the link for the “Questions/Comments” form

Via E-Mail

Steven.Robery@illinois.gov

Subject: IL 38 at I-39
Interchange

Via Mail

Illinois Department of
Transportation
District 2
Studies and Plans

819 Depot Avenue
Dixon, IL 61021-3500
Attn: Steven Robery

IL 38 at I-39 Interchange Phase I Study

Next Steps

- Review, Summarize and Respond to Comments
- Additional Coordination
- Refine and Finalize Preferred Alternative
- Prepare Final Engineering Report

Thank You!