

US 20 STEPHENSON COUNTY
Rees Road to Flansburg Road

Welcome

The presentation will begin shortly.



**While you are waiting,
please remember:**

Turn cameras & microphones off

The meeting will be **recorded**

Questions & comments may be
submitted at any time and will be
addressed at the end of the meeting
(*instructions on how to submit will be provided*)

PANELISTS



Mike Kuehn
IDOT



Corey Conderman
IDOT



Tyler Grau
Stanley Consultants



Sudhir Patel
Stanley Consultants



Ryan Armstrong
Stanley Consultants



Richard Ray
GZA



Brad Hahn
Images, Inc.

AGENDA



- ✓ **Public Meeting Participation**
- ✓ **Project Overview**
- ✓ **Existing Conditions**
- ✓ **Proposed Improvement**
- ✓ **Stakeholder Involvement**
- ✓ **Q&A Panel**

GUIDELINES



Meeting recorded
for project
documentation and
availability for those
unable to attend



**Questions and
comments** may be
submitted at any time
during meeting using
the Q&A feature



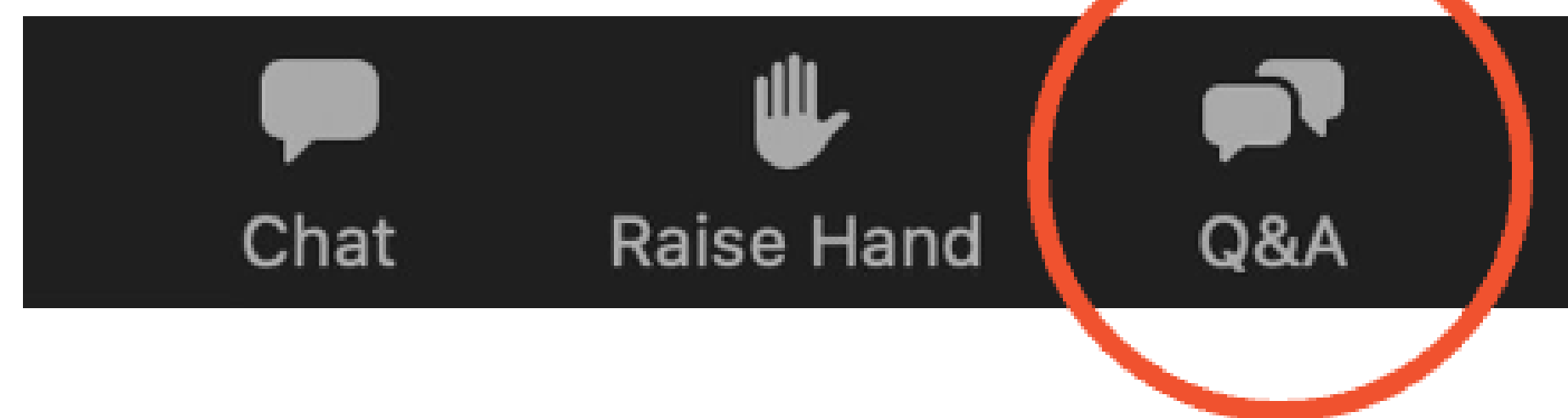
**If your question requires
further research,**
the project team
will follow-up with
additional information



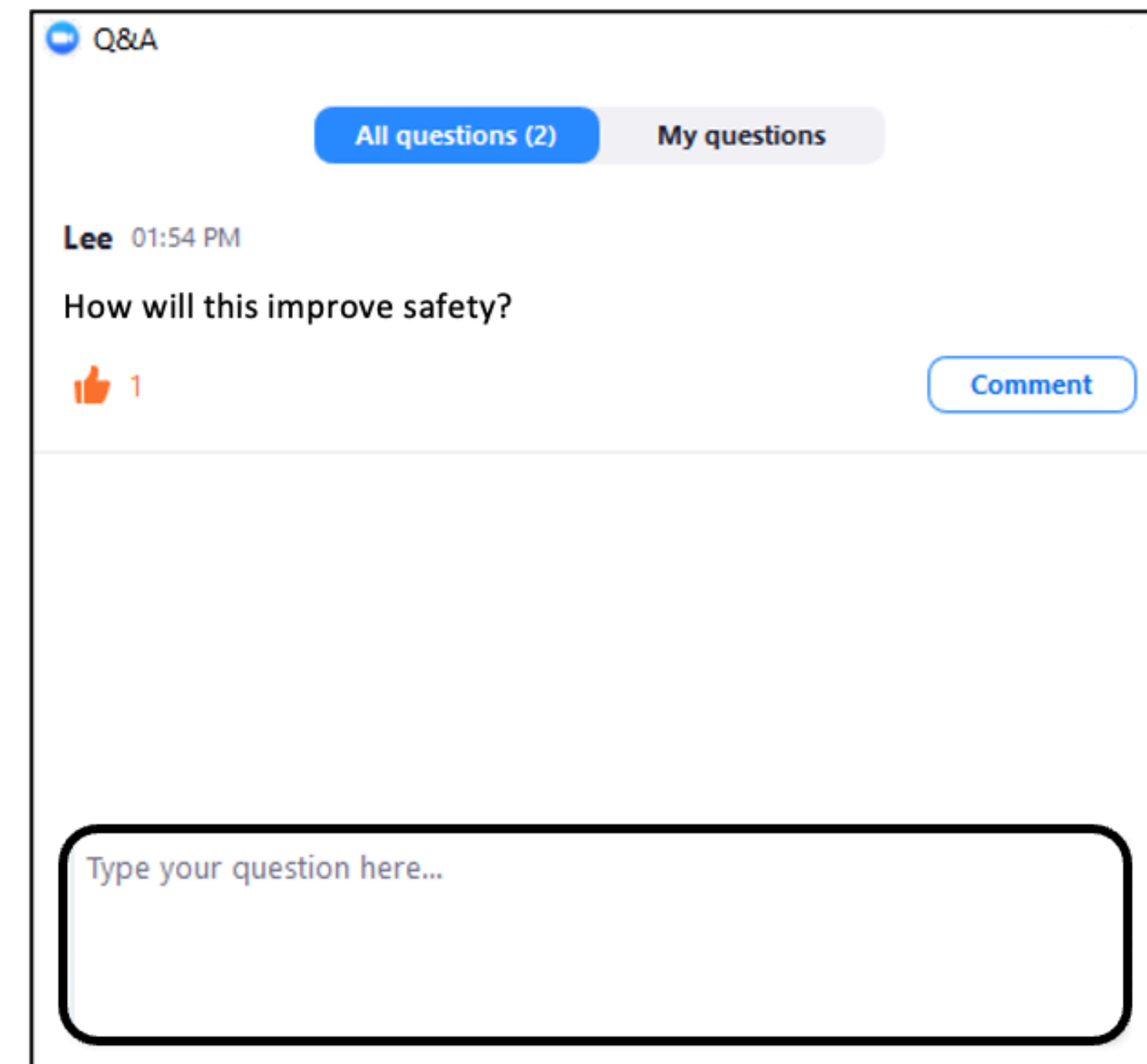
**Please contact the project team
with more detailed, individual
questions by visiting:**
bit.ly/us20-rees-to-flansburg-road

HOW TO USE ZOOM

Submit questions and comments via the Q&A feature! A Q&A session will be held at the end of this meeting.

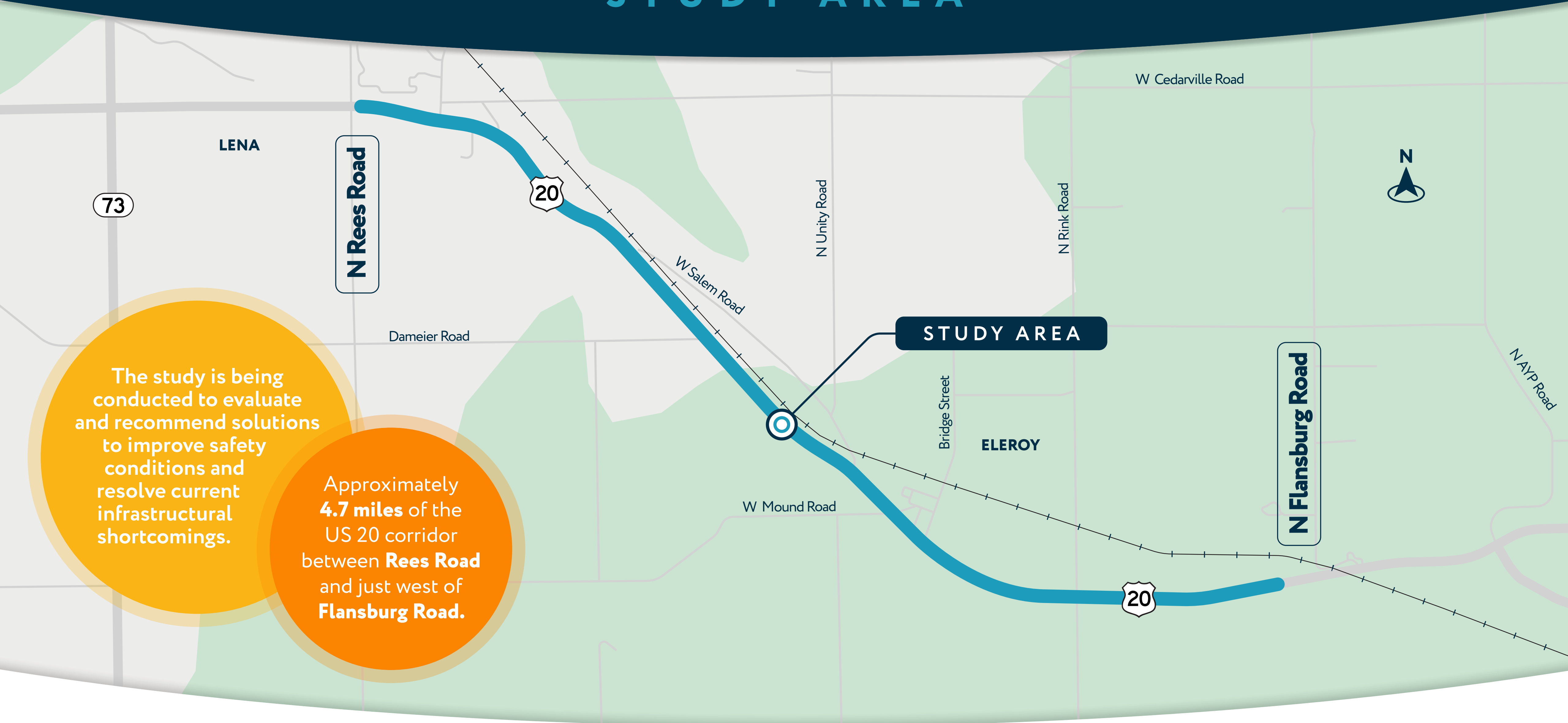


Click **“Q&A”** to expand window and type a question or comment



Project Overview

STUDY AREA



STUDY PHASES

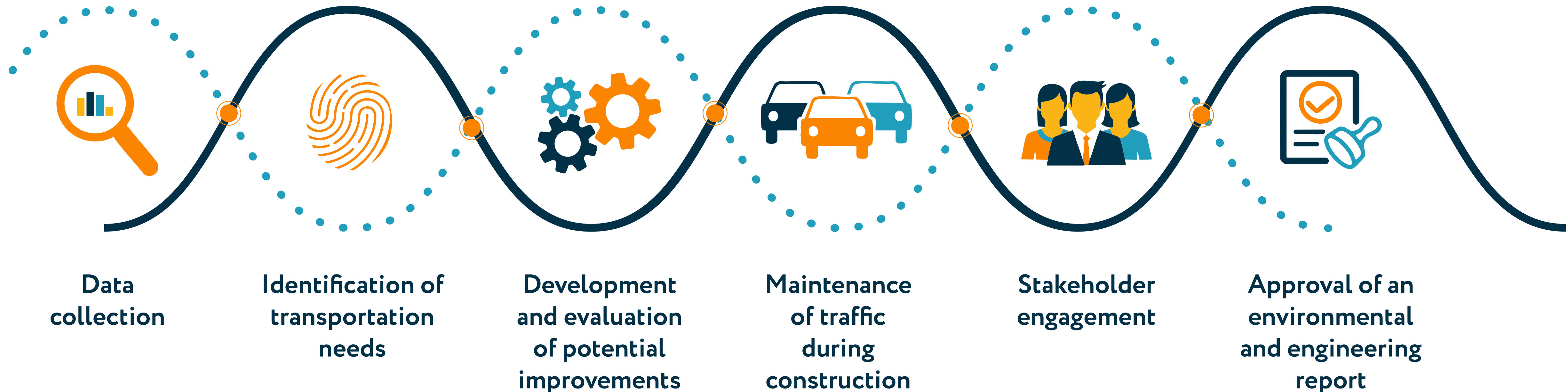


*Funding for Phases II & III, is provided in IDOT's 2026-31 Multi-Year Program (MYP).
Subject to change based on program readiness and funding availability.*

PHASE I COMPONENTS

IDOT's Phase I involves preliminary engineering and environmental assessments to identify preferred design improvements.

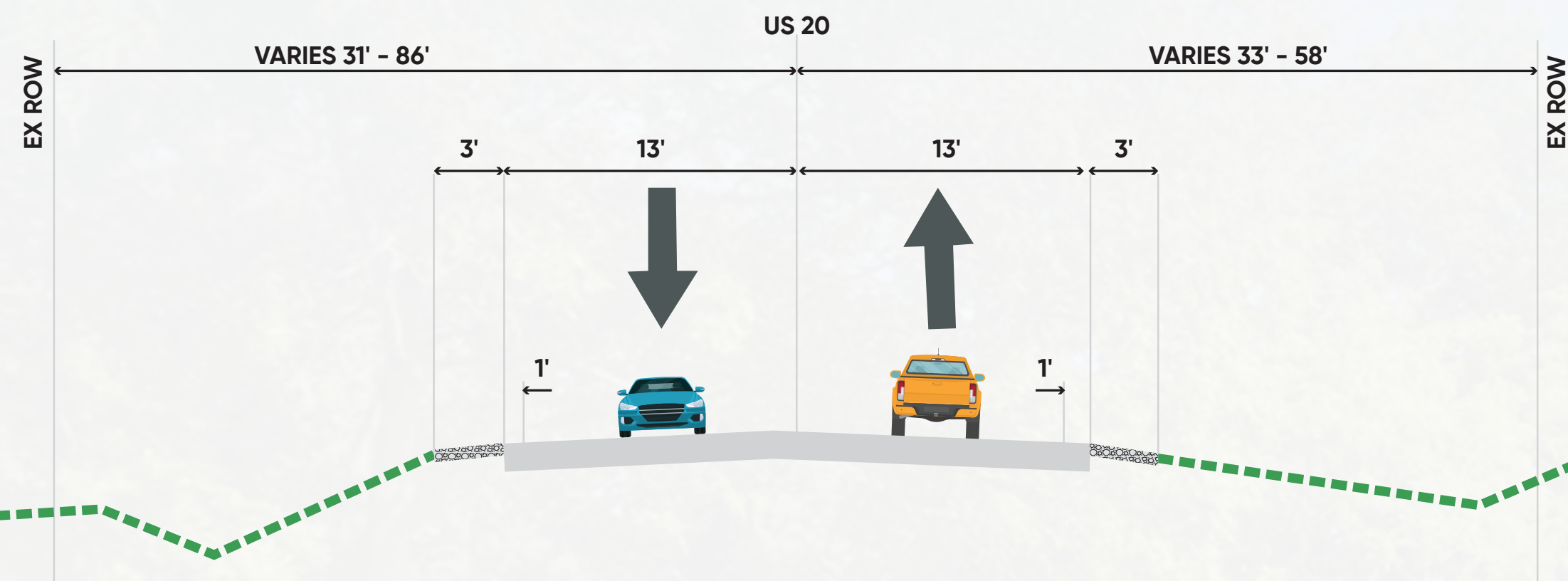
Components include:



Existing Conditions

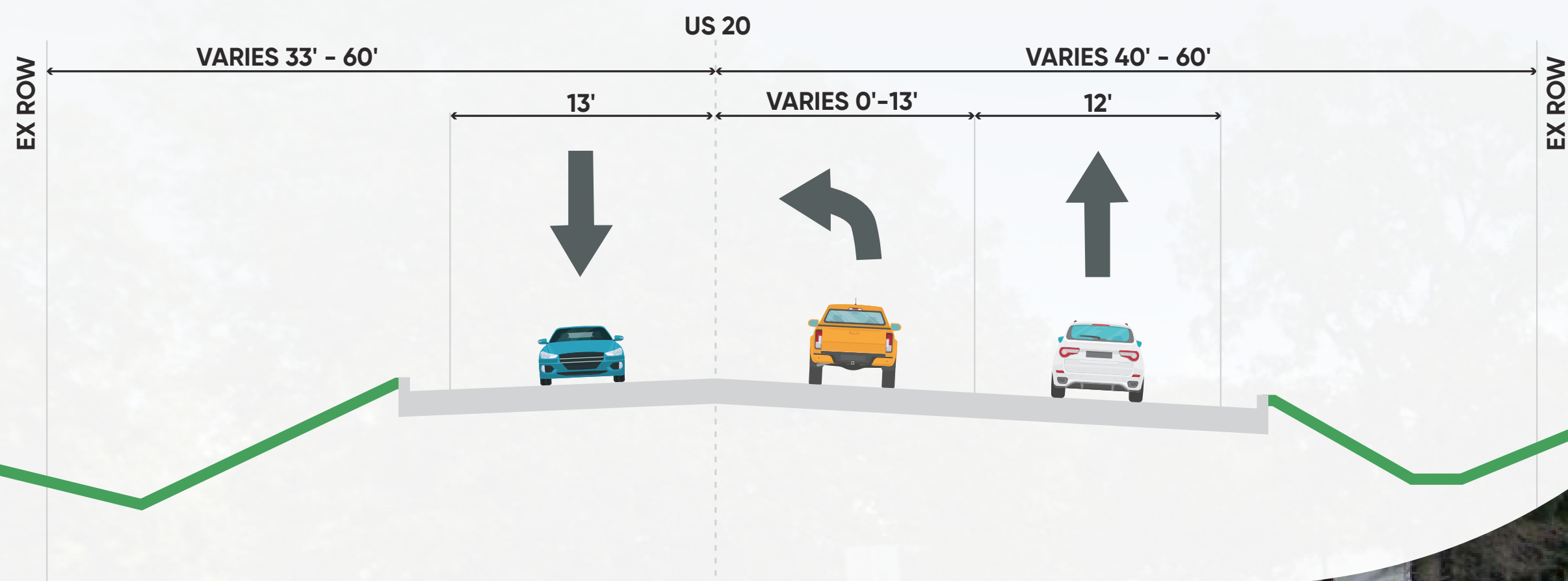
EXISTING CONDITIONS

Rural



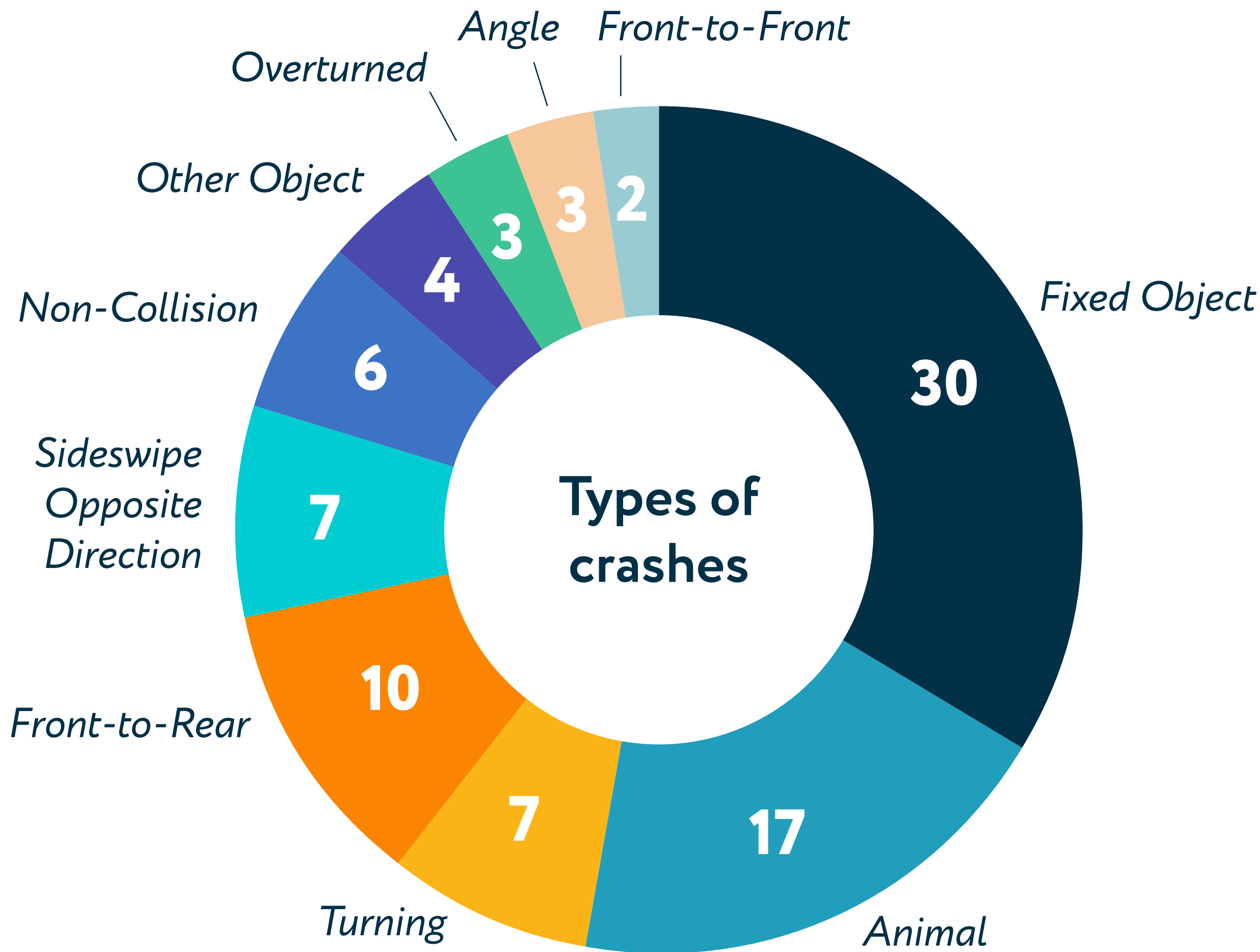
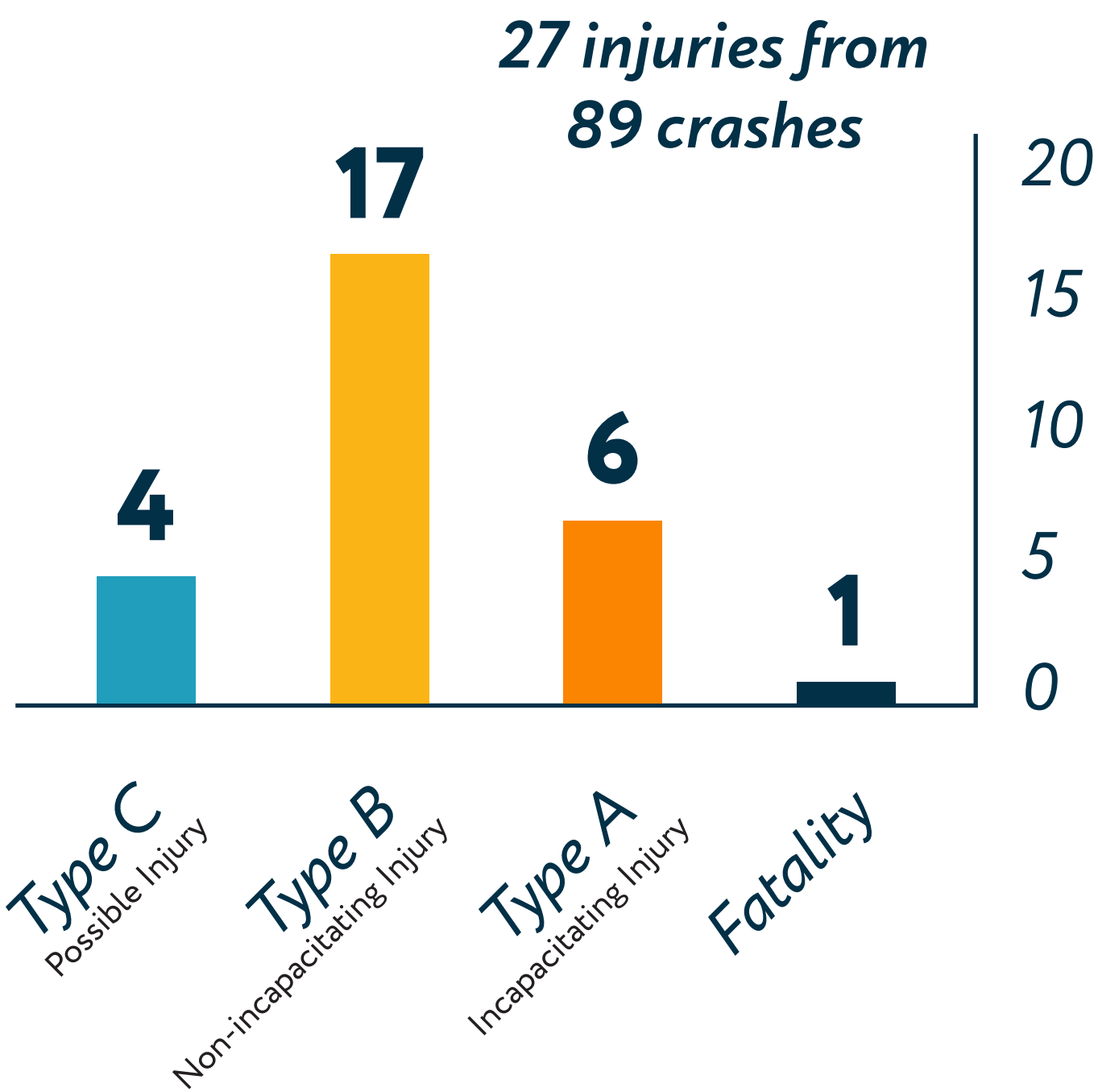
EXISTING CONDITIONS

Urban



EXISTING CONDITIONS

Five years of data studied
(2017-2021) 89 total crashes.



EXISTING CONDITIONS



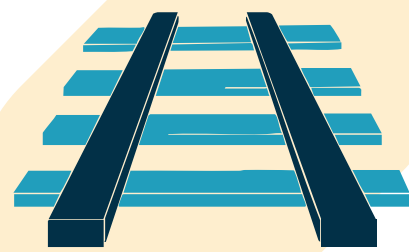
Culvert condition

Multiple undersized and deteriorating crossroad culverts in study area



Additional Safety Improvements

Potential countermeasures in addition to geometric improvements



Railroads

Coordination with study area railroads



Local Impacts

Coordination with Stephenson County, Village of Lena, City of Freeport and Erin Township



Historic and Park Properties

- » Historic resources potentially impacted by proposed project.
- » Park property potentially impacted.



Bicycle and pedestrian accommodation

Roadway does not have any facilities

Proposed Improvements

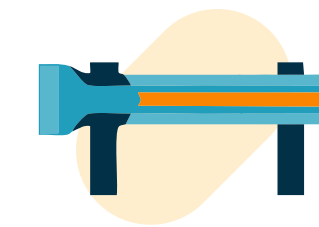
PROPOSED IMPROVEMENTS

Overview

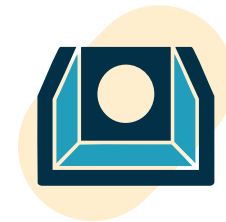
It is anticipated that this project will help **reduce the number and severity of off-road crashes** in which vehicles are leaving the roadway or crossing the centerline and will help improve driving conditions



Major rehabilitation, patching, resurfacing



Remove existing guardrail at all culverts



Replace undersized & deteriorating culverts



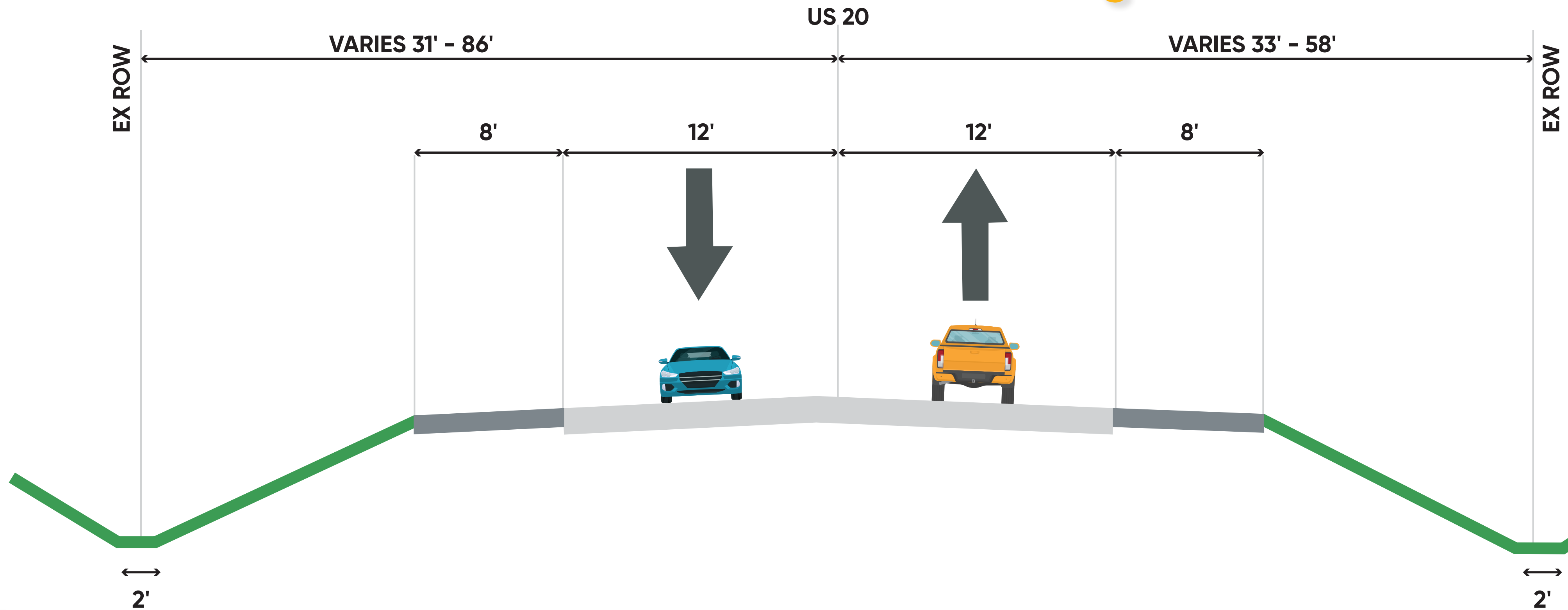
Eight-foot shoulders and traversable foreslopes

Additional countermeasures:

- Correct superelevation
- Centerline and shoulder rumble strips
- Additional advanced warning signs
- Removing hazards from clear zone (i.e. utility poles)
- Speed feedback signs
- Evaluation of short passing zones

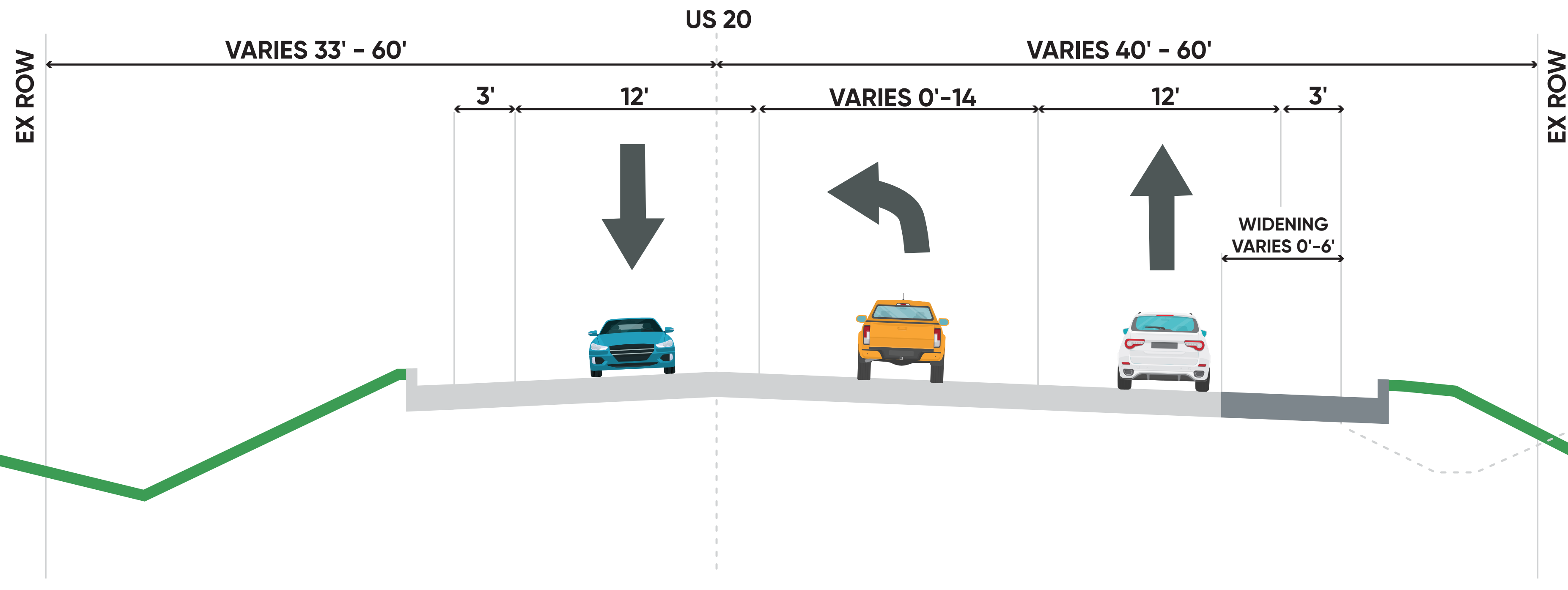
PROPOSED IMPROVEMENTS

Rural



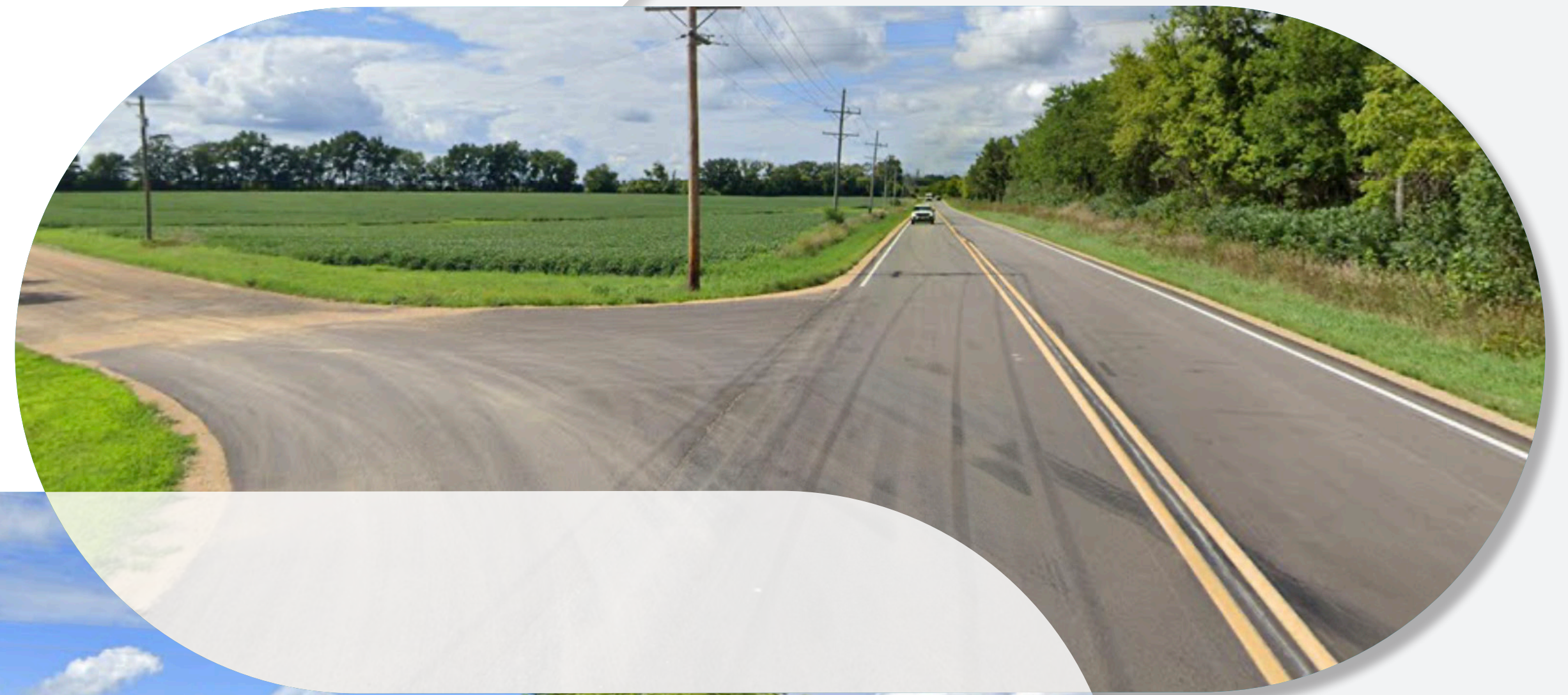
PROPOSED IMPROVEMENTS

Urban






Considerations

- ✓ Right-of-Way Impacts
- ✓ Railroad Embankment
- ✓ Public & Historic Properties



PROPOSED IMPROVEMENTS

LEGEND

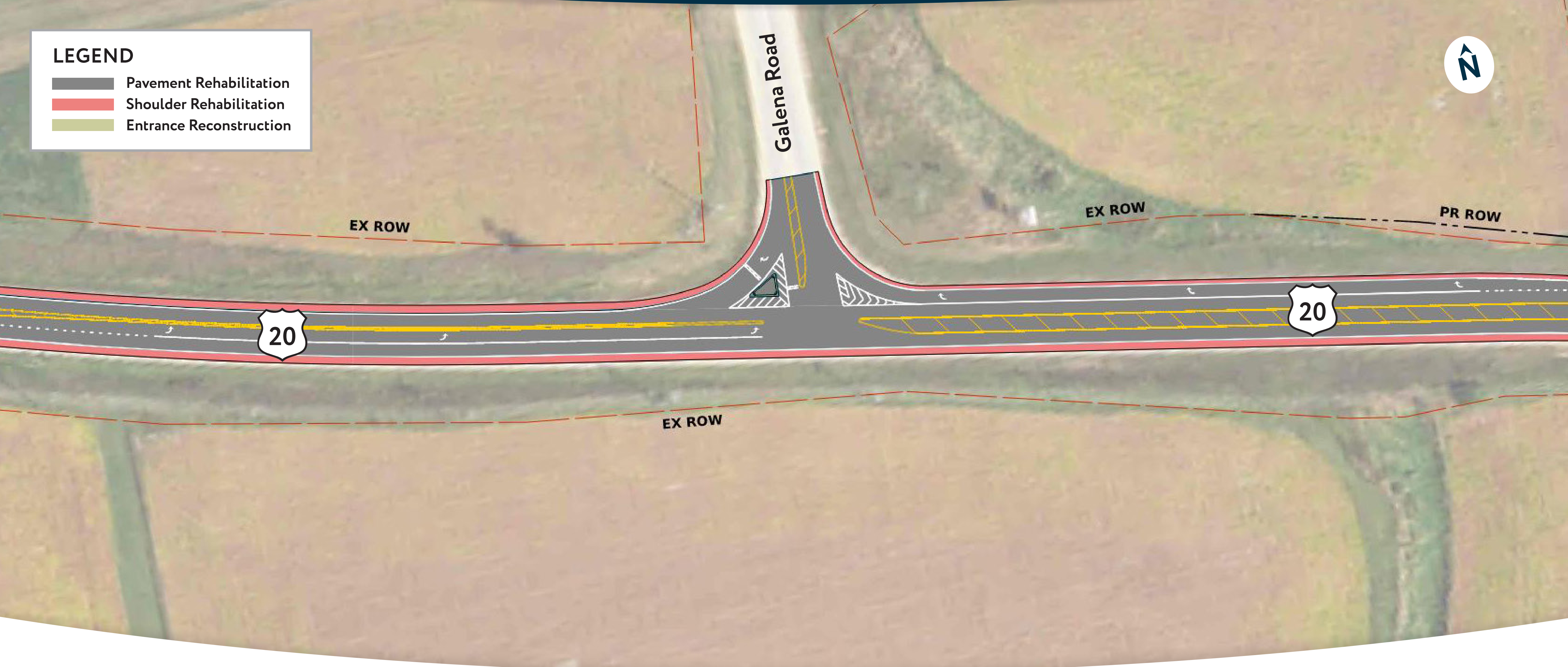
-  Pavement Rehabilitation
-  Shoulder Rehabilitation
-  Entrance Reconstruction



PROPOSED IMPROVEMENTS

LEGEND

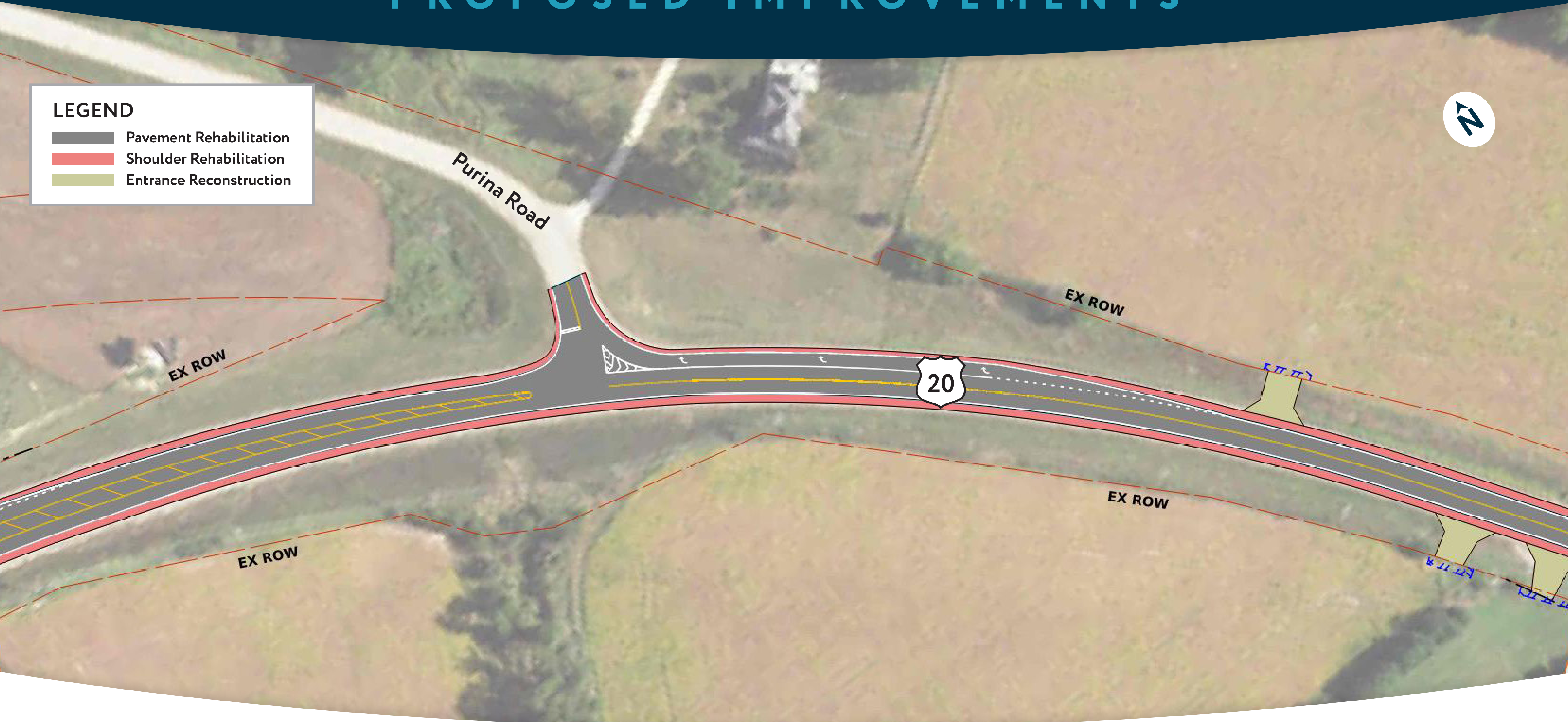
- Pavement Rehabilitation
- Shoulder Rehabilitation
- Entrance Reconstruction



PROPOSED IMPROVEMENTS

LEGEND

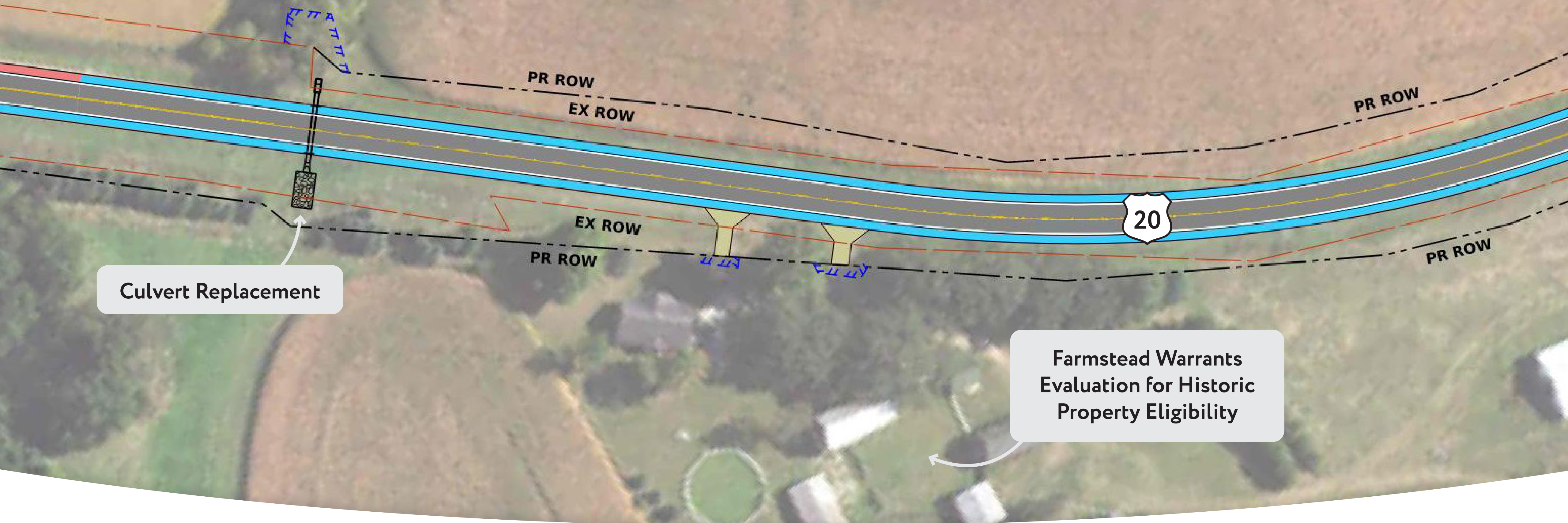
- Pavement Rehabilitation
- Shoulder Rehabilitation
- Entrance Reconstruction



PROPOSED IMPROVEMENTS





LEGEND

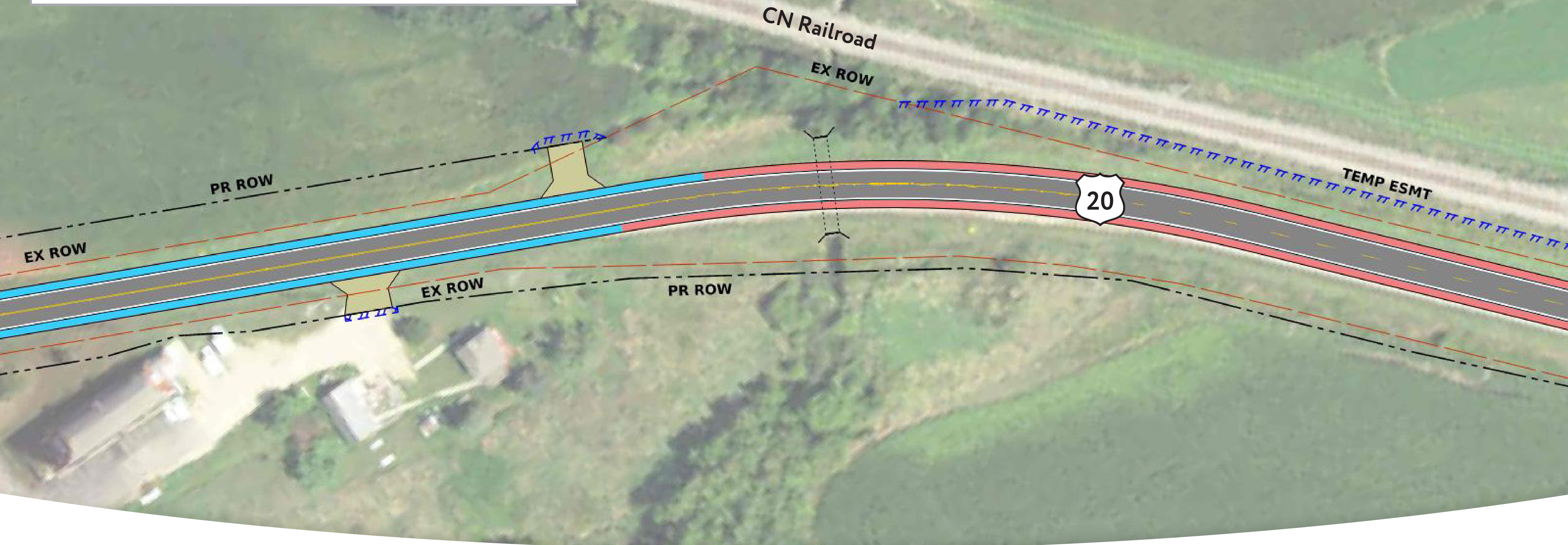
- Pavement Rehabilitation
- Shoulder Rehabilitation
- Shoulder Widening
- Entrance Reconstruction



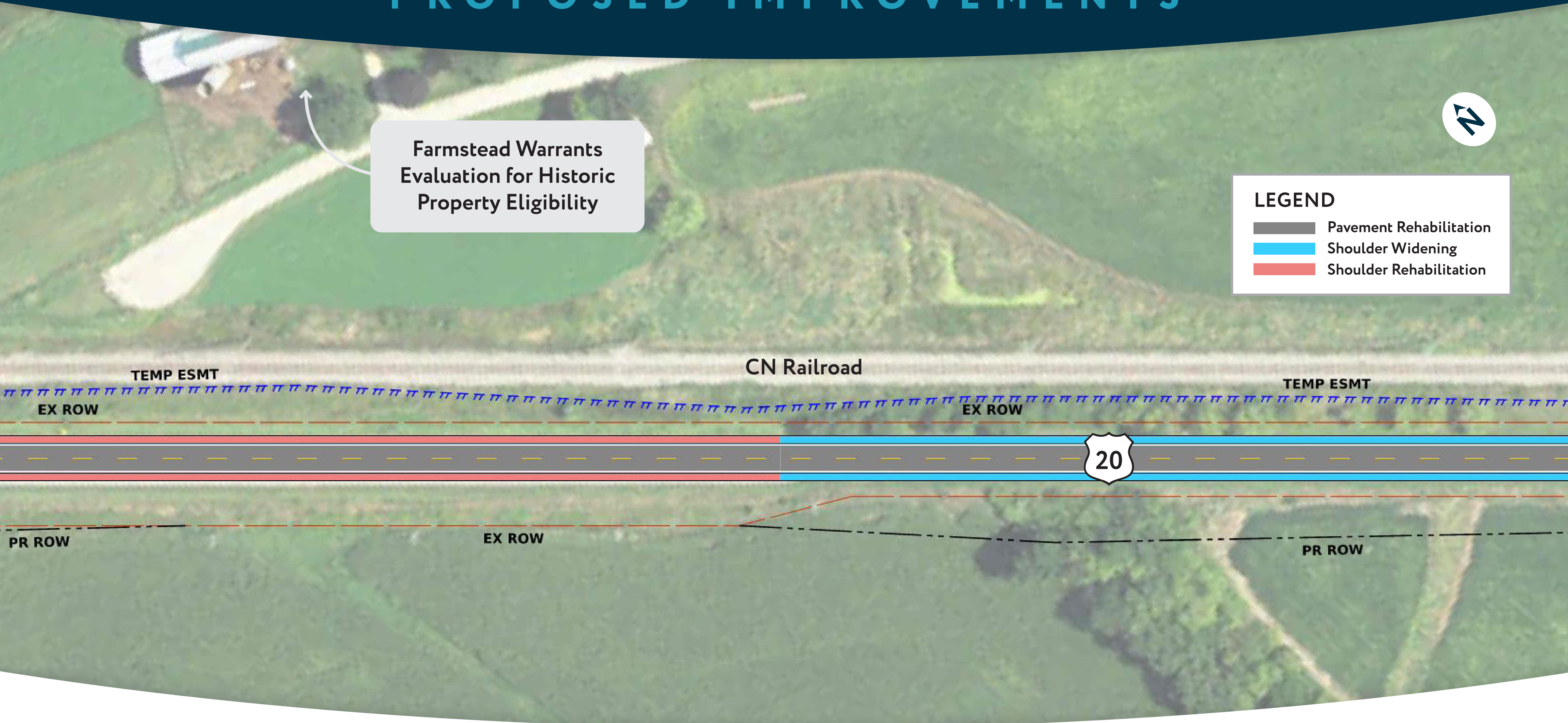
PROPOSED IMPROVEMENTS

LEGEND

- | | | | |
|---|-------------------------|---|-------------------------|
|  | Pavement Rehabilitation |  | Shoulder Rehabilitation |
|  | Shoulder Widening |  | Entrance Reconstruction |



PROPOSED IMPROVEMENTS



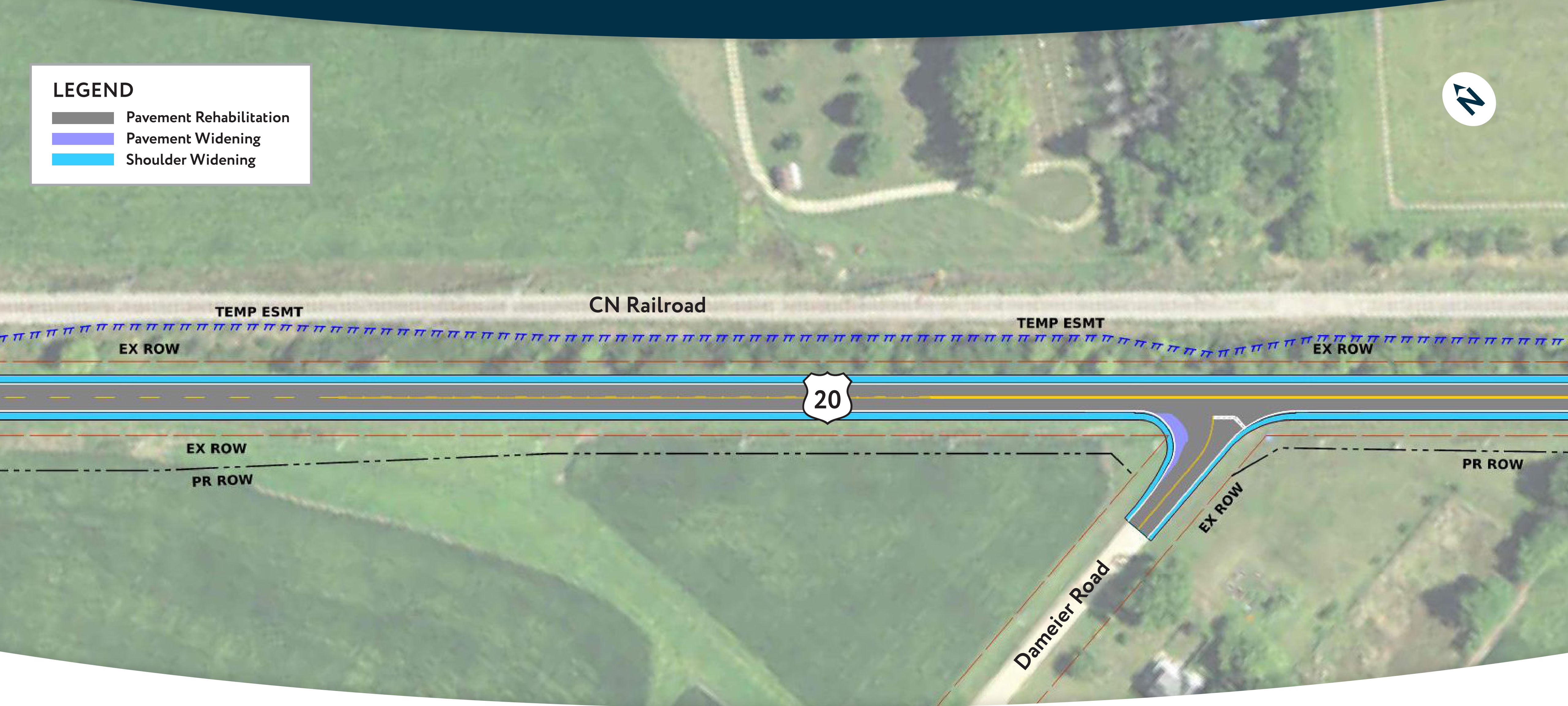
PROPOSED IMPROVEMENTS

LEGEND

Pavement Rehabilitation

Pavement Widening

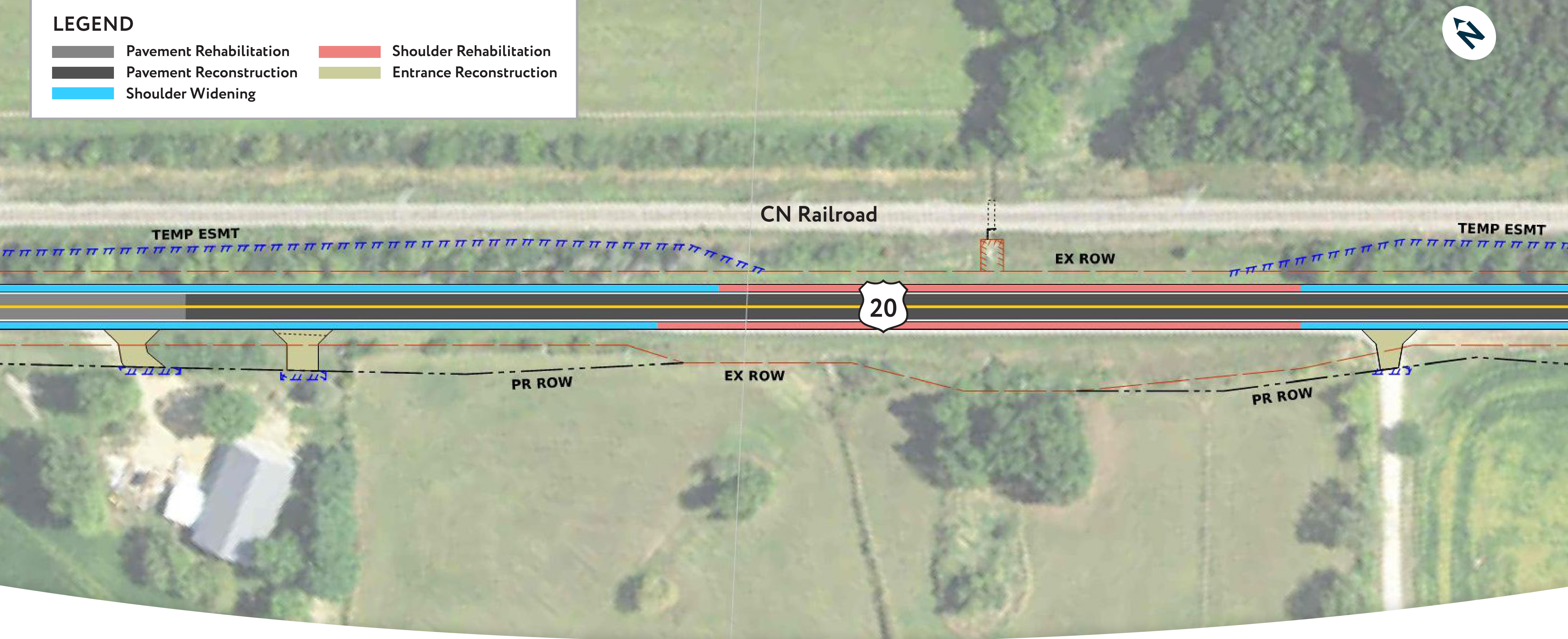
Shoulder Widening



PROPOSED IMPROVEMENTS

LEGEND

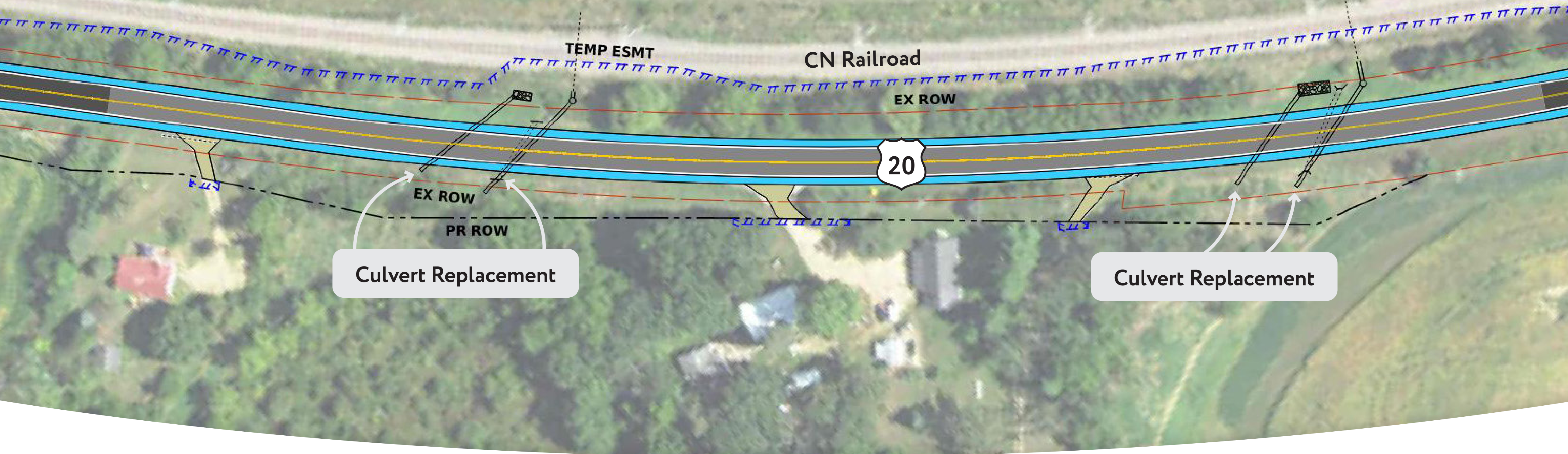
- | | | | |
|---|-------------------------|---|-------------------------|
|  | Pavement Rehabilitation |  | Shoulder Rehabilitation |
|  | Pavement Reconstruction |  | Entrance Reconstruction |
|  | Shoulder Widening | | |



PROPOSED IMPROVEMENTS


LEGEND

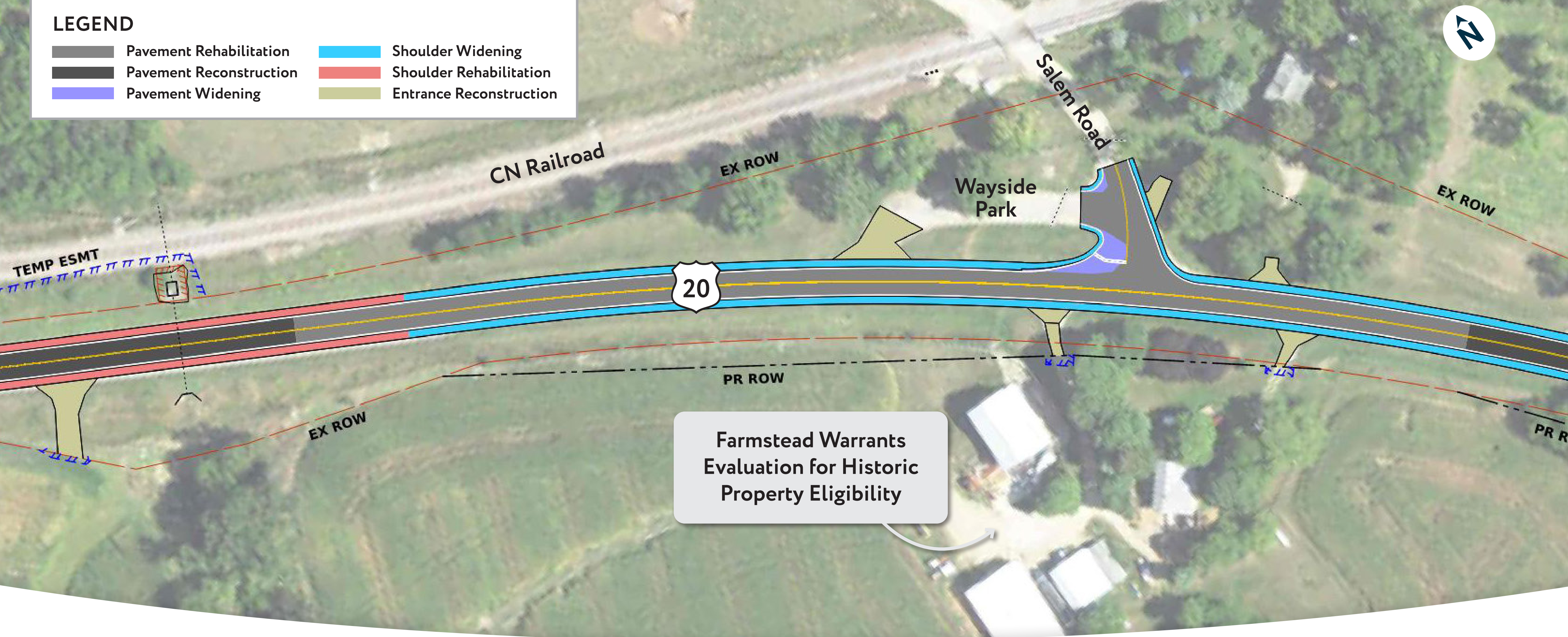
	Pavement Rehabilitation		Shoulder Widening
	Pavement Reconstruction		Entrance Reconstruction



PROPOSED IMPROVEMENTS


LEGEND

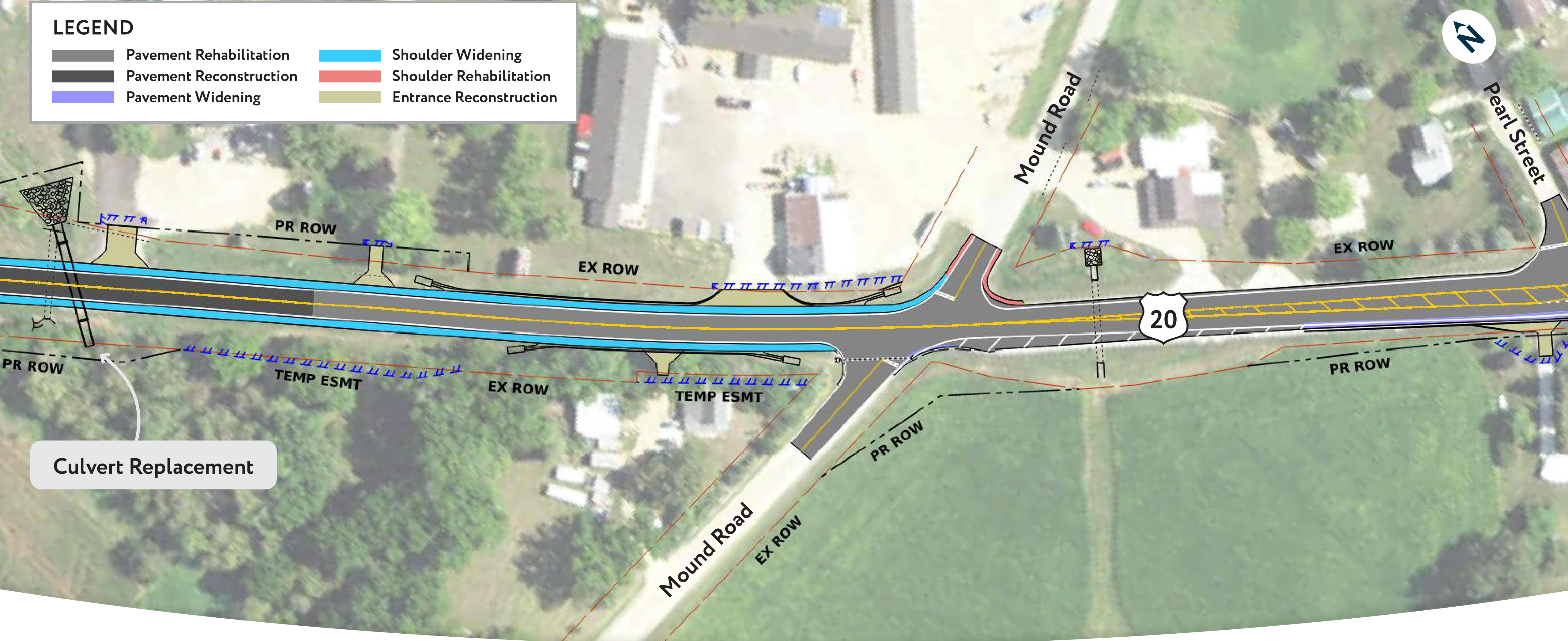
	Pavement Rehabilitation		Shoulder Widening
	Pavement Reconstruction		Shoulder Rehabilitation
	Pavement Widening		Entrance Reconstruction



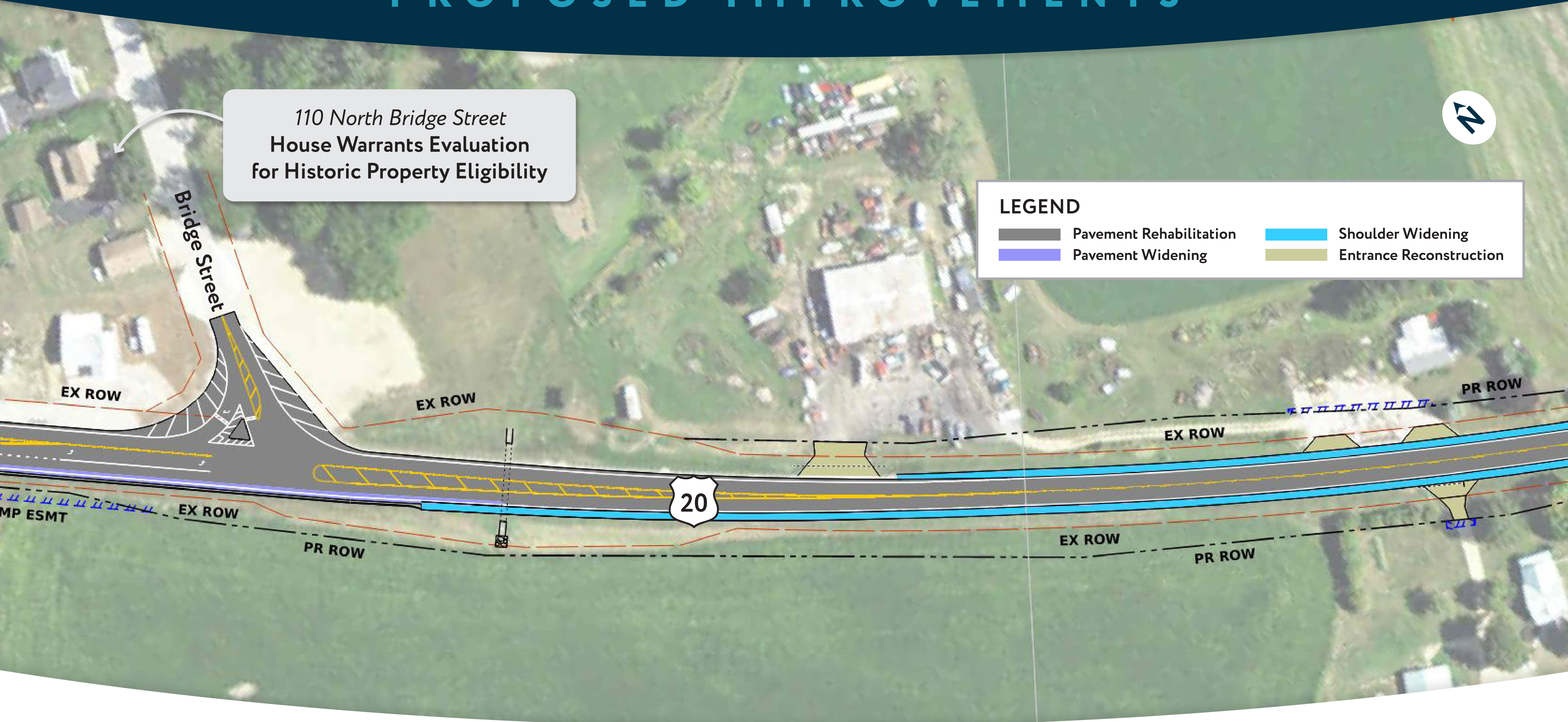
PROPOSED IMPROVEMENTS

LEGEND

	Pavement Rehabilitation		Shoulder Widening
	Pavement Reconstruction		Shoulder Rehabilitation
	Pavement Widening		Entrance Reconstruction



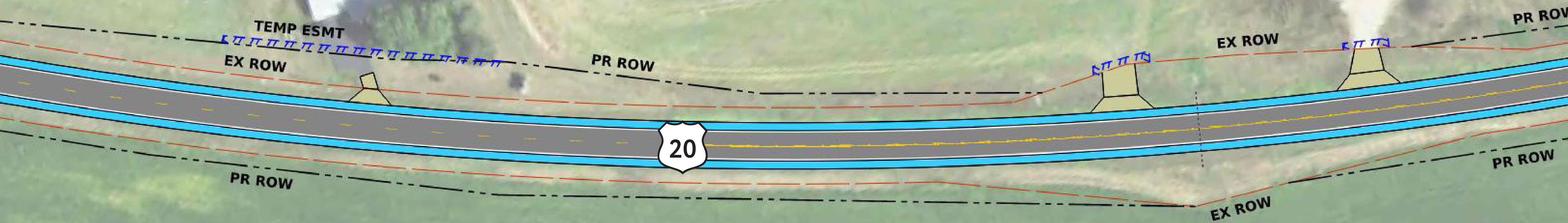
PROPOSED IMPROVEMENTS



PROPOSED IMPROVEMENTS


LEGEND

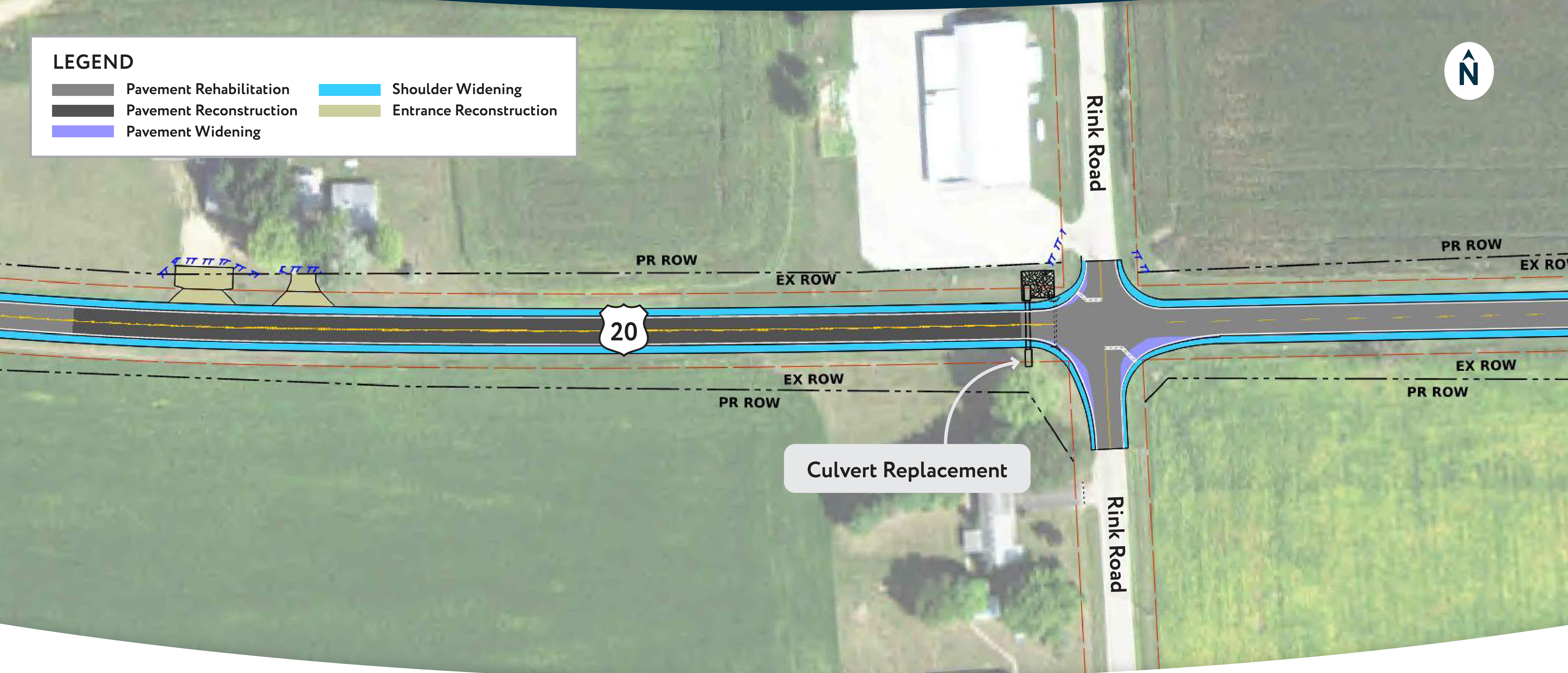
- Pavement Rehabilitation
- Shoulder Widening
- Entrance Reconstruction



PROPOSED IMPROVEMENTS

LEGEND

- | | | | |
|---|-------------------------|---|-------------------------|
|  | Pavement Rehabilitation |  | Shoulder Widening |
|  | Pavement Reconstruction |  | Entrance Reconstruction |
|  | Pavement Widening | | |



PROPOSED IMPROVEMENTS

LEGEND

- Pavement Rehabilitation
- Shoulder Widening
- Entrance Reconstruction



Farmstead Warrants Evaluation
for Historic Property Eligibility

Culvert Replacement

House Warrants Evaluation
for Historic Property Eligibility

PROPOSED IMPROVEMENTS

LEGEND

- Pavement Rehabilitation
- Shoulder Widening
- Entrance Reconstruction

Round Barn on National Register of Historic Places (NRHP)


House Warrants Evaluation for Historic Property Eligibility

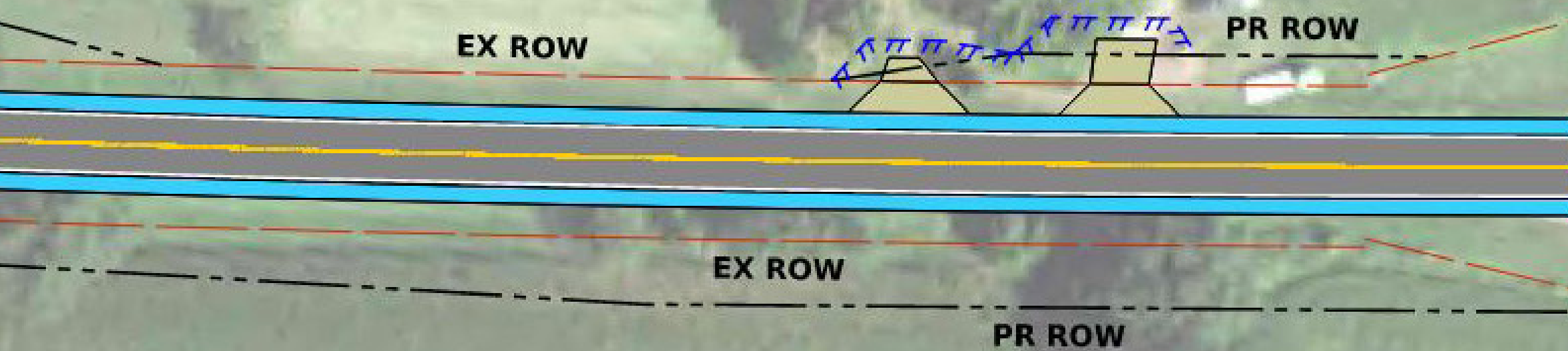


Culvert Replacement

PROPOSED IMPROVEMENTS

LEGEND

-  Pavement Rehabilitation
-  Shoulder Widening
-  Entrance Reconstruction



Stakeholder Involvement

Get involved

Visit us online!

bit.ly/us20-rees-to-flansburg-road

Public feedback is encouraged throughout the process.

Interests contacted for feedback include:

- *Local, state and federal elected and community leaders*
- *Emergency services*
- *Area schools*
- *Planning and transportation agencies*
- *Businesses*
- *Nonprofits*
- *Community groups*
- *Special interests*

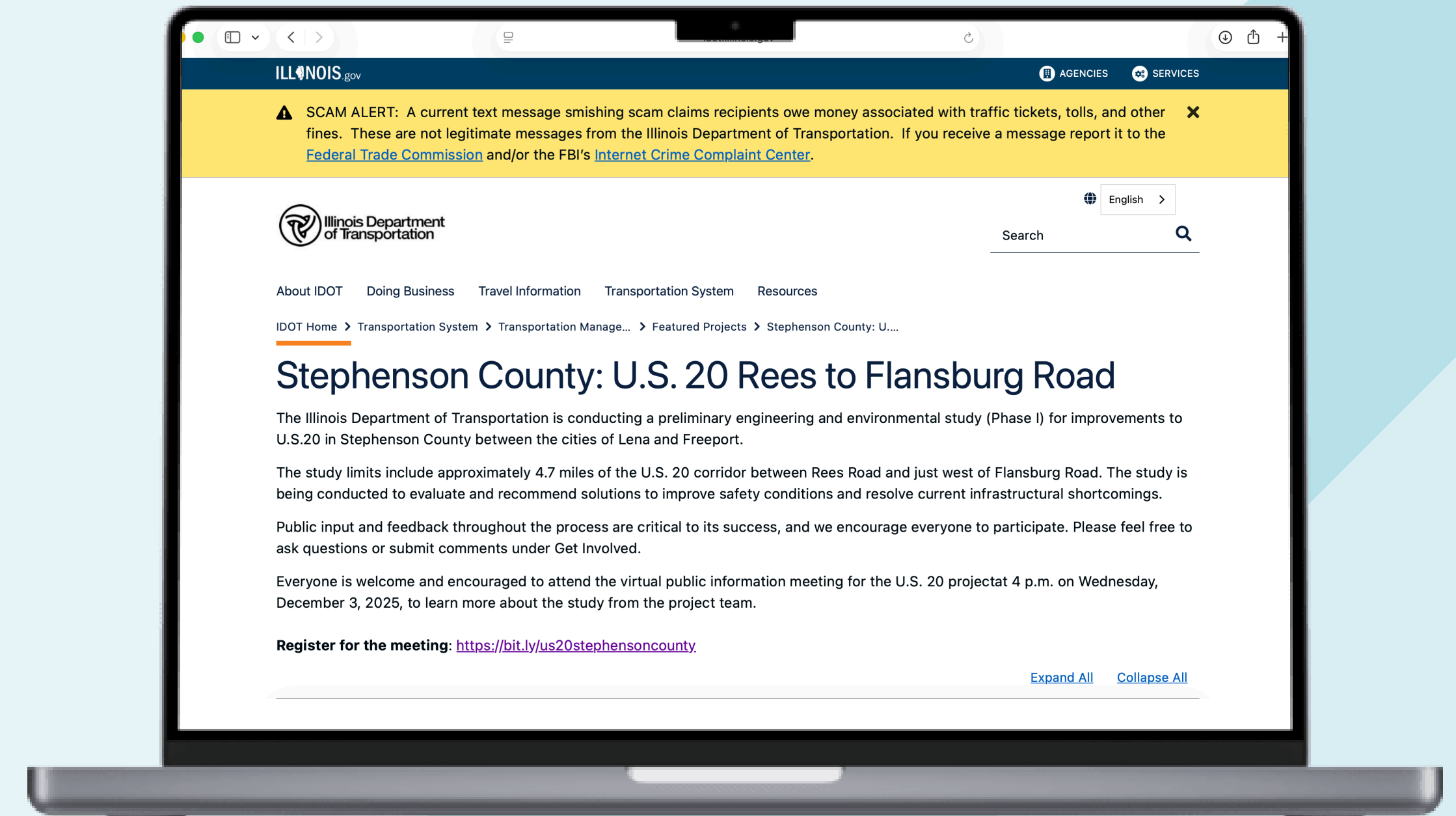
OPPORTUNITIES / NEXT STEPS

Comments are always encouraged.

Those received by Wednesday, December 17 will be part of the Public Meeting record.

Next steps:

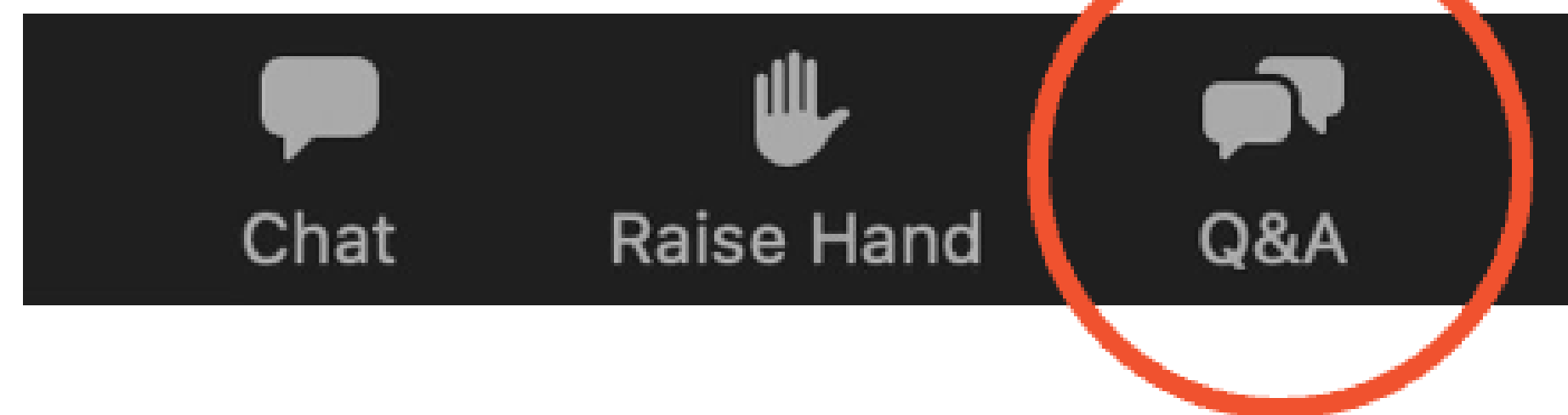
- *Finalize proposed improvements in consideration of public feedback, additional data collection and further analysis*
- *Prepare a project report for design approval*
- *Begin Phase II (land acquisition and plan preparation)*



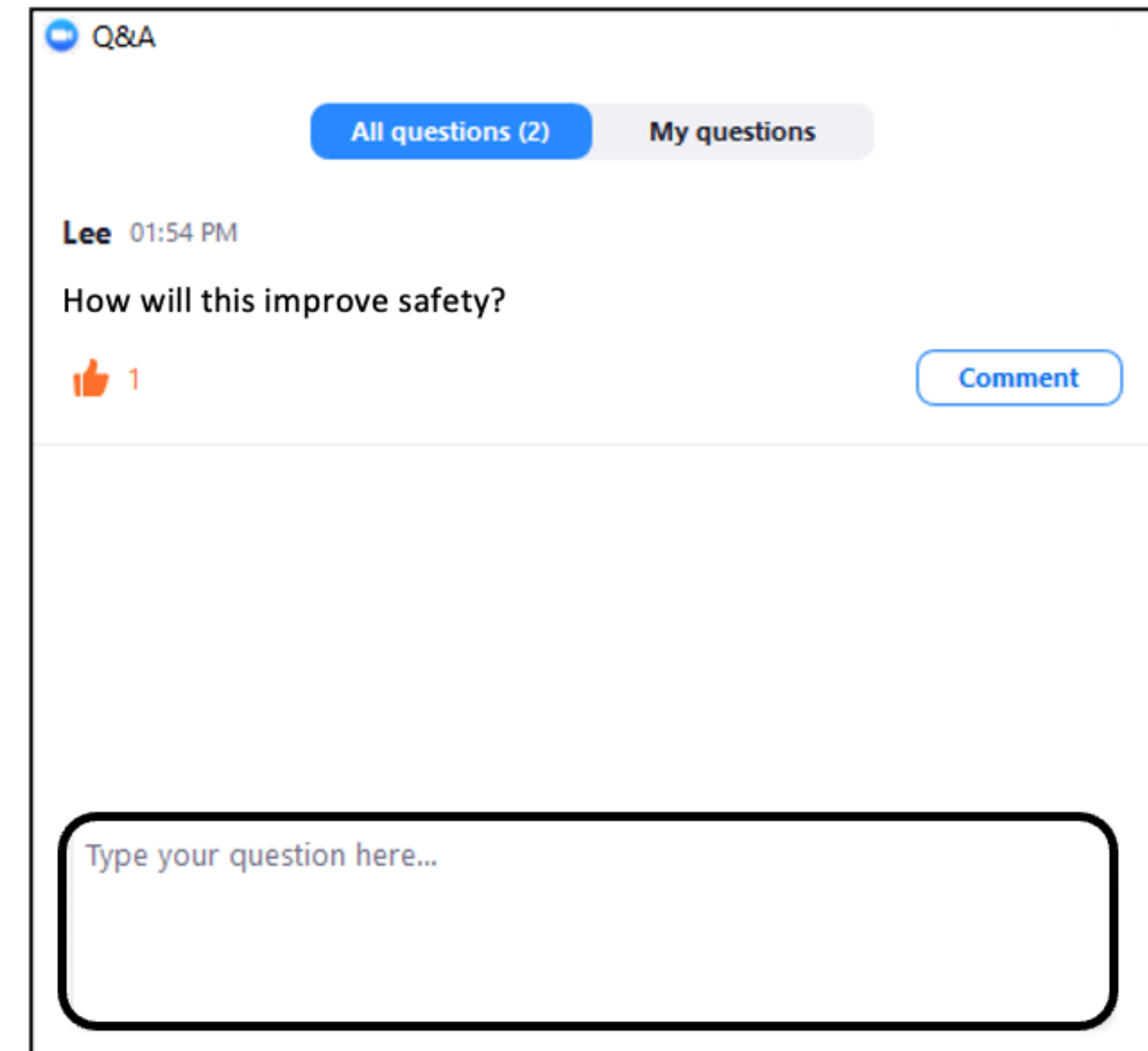
Visit us online!
bit.ly/us20-rees-to-flansburg-road

HOW TO USE ZOOM

Submit questions and comments via the Q&A feature! A Q&A session will be held at the end of this meeting.



Click **“Q&A”** to expand window and type a question or comment



Q & A



Mike Kuehn
IDOT



Corey Conderman
IDOT



Tyler Grau
Stanley Consultants



Sudhir Patel
Stanley Consultants



Ryan Armstrong
Stanley Consultants



Richard Ray
GZA



Brad Hahn
Images, Inc.

Thank you!