

US BUSINESS ROUTE 20

*From Shaw Road to State Street/North Appleton Road
Intersection in Belvidere*

Thank you for joining us! The meeting will begin at 5pm

This meeting will be recorded and
available on the project website
after tonight's meeting.



Illinois Department
of Transportation

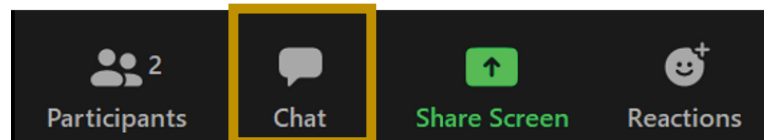
JANUARY 12, 2022

Virtual Meeting Format

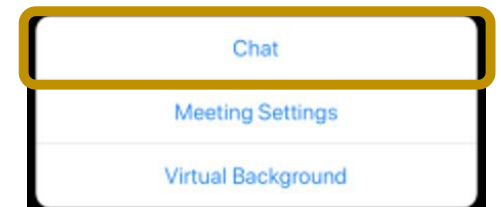


We Value Your Feedback!

Click the Chat icon at the bottom of the screen to provide your feedback and submit questions.



Computer view



Mobile view

*This meeting is
being recorded*



Presenters



Tammy Wierciak
Metro Strategies Group



Michael Kuehn
IDOT Geometrics



Amber Petkevicius
Hanson Project Engineer

Panelists



Steven Robery
IDOT Study Contact
& Project Manager



John Nelson
Hanson Project
Manager



Mark Heaton
Hanson Roadway
Lead



US BUSINESS ROUTE 20

*From Shaw Road to State Street/North Appleton Road
Intersection in Belvidere*

Public Meeting #1 | January 12, 2022



Illinois Department
of Transportation

JANUARY 12, 2022

Agenda

- 1) Study History
- 2) Current Study Overview
- 3) IDOT Study Process
- 4) Existing Conditions
- 5) Potential Improvements
- 6) Public Outreach
- 7) Live Q&A
- 8) Next Steps

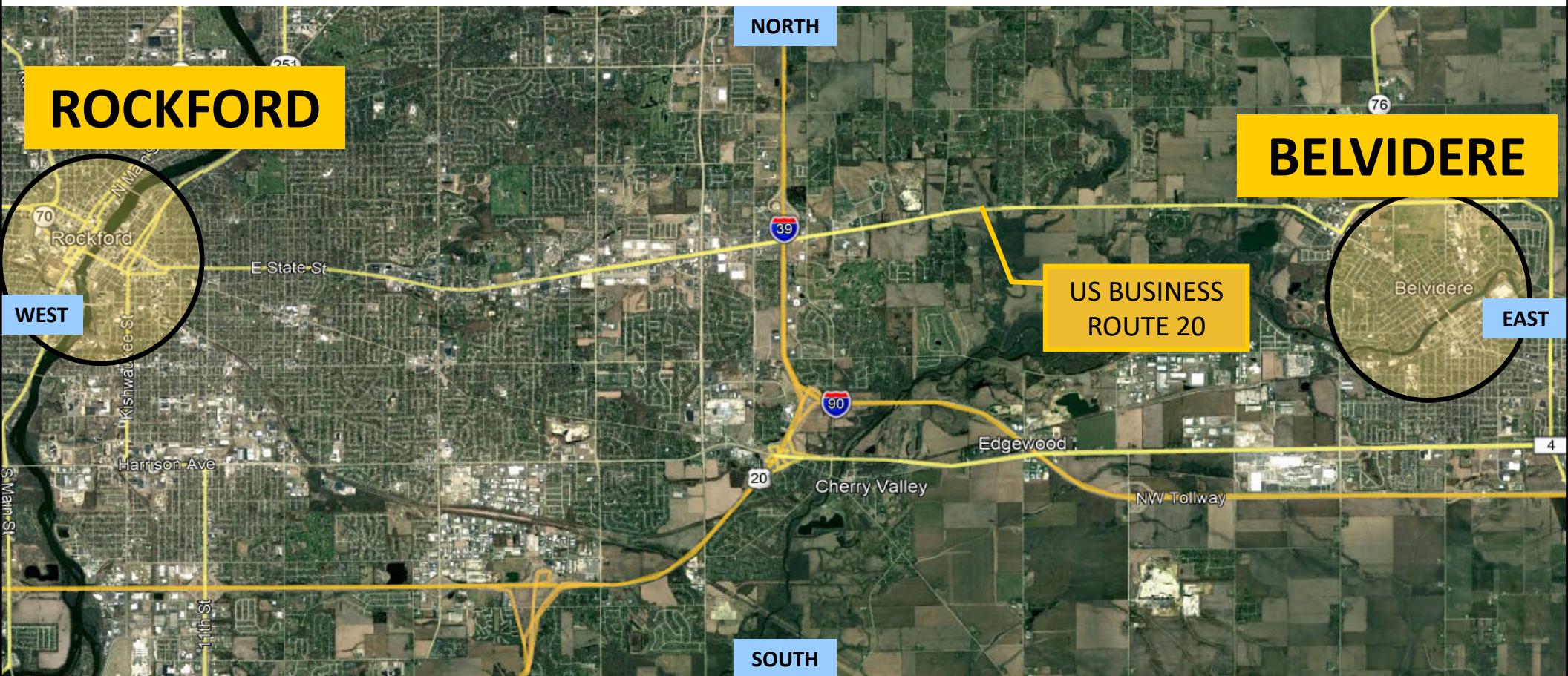


Study History



JANUARY 12, 2022

Study History



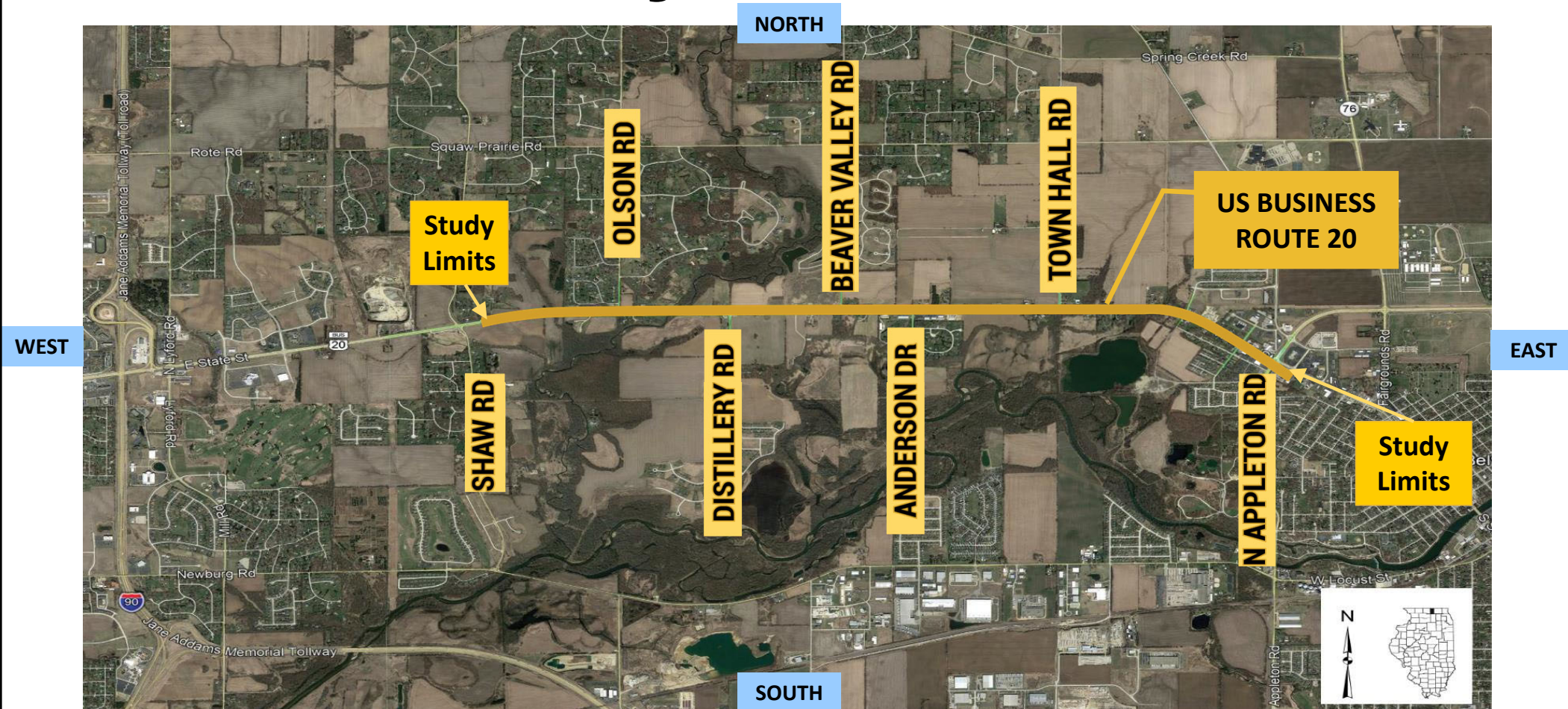
JANUARY 12, 2022

Current Study Overview



JANUARY 12, 2022

Current Study Overview – Limits



Current Study Overview

4 Miles

**2-Lane Roadway
With Additional
Turn Lanes at
Various
Intersections**

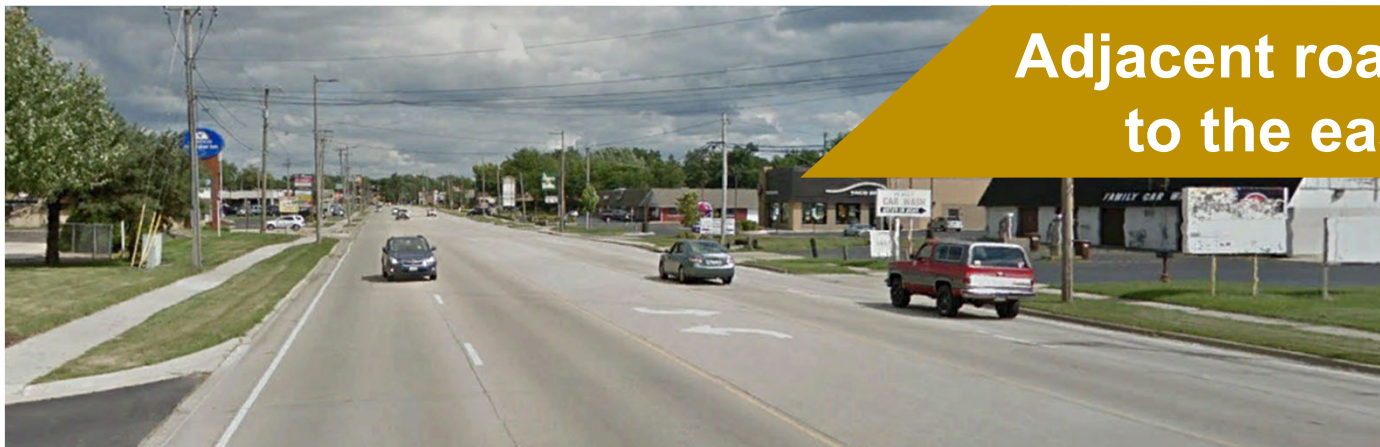


Current Study Overview

Adjacent roadway
to the west



Adjacent roadway
to the east

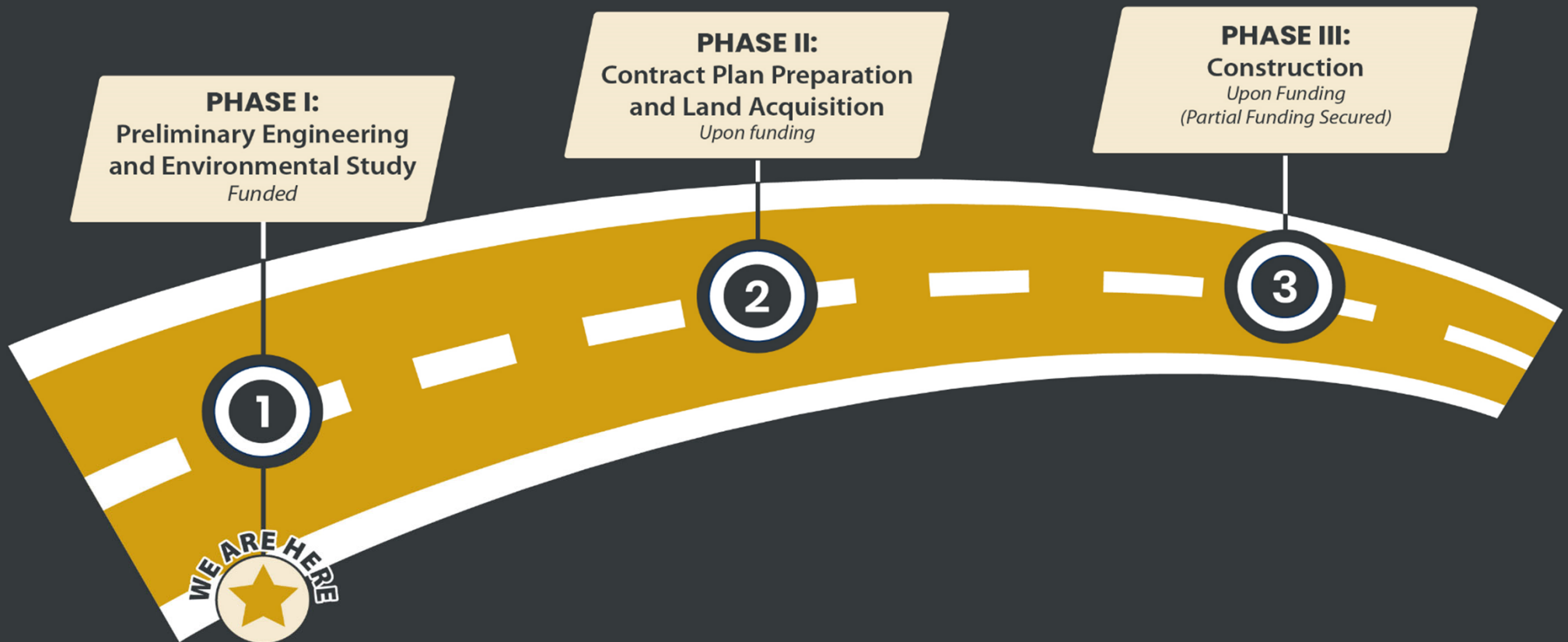


IDOT Study Process



JANUARY 12, 2022

IDOT Project Phases



Phase I Study Process

Data Collection

- Infrastructure age and condition
- Traffic Volumes
- Crash history collection
- Environmental Conditions
- Noise Analysis
- Existing Drainage

Stakeholder Input

- Public Meetings
- Additional Public Outreach

Identify & Address Transportation Needs for All Users

- Vehicles, Pedestrians, and Bicyclists

Establish Alternatives

Stakeholder Input Again

- Public Meeting
- Additional Public Outreach

Recommendation for Improvement



Study Timeline

2021

Phase I

Spring

- Existing Conditions Analysis

Fall

- Environmental Study

2022

Winter

- Public Meeting #1

Spring

- Design Report
- Structural Review

Fall

- Environmental Report

2023

Winter

- Public Meeting #2
- Additional Public Outreach

Phase II

- Prepare Design Plans for Bid
- Right of Way

**Pending
Funding**

Phase III

- Construction

**WE ARE
HERE**

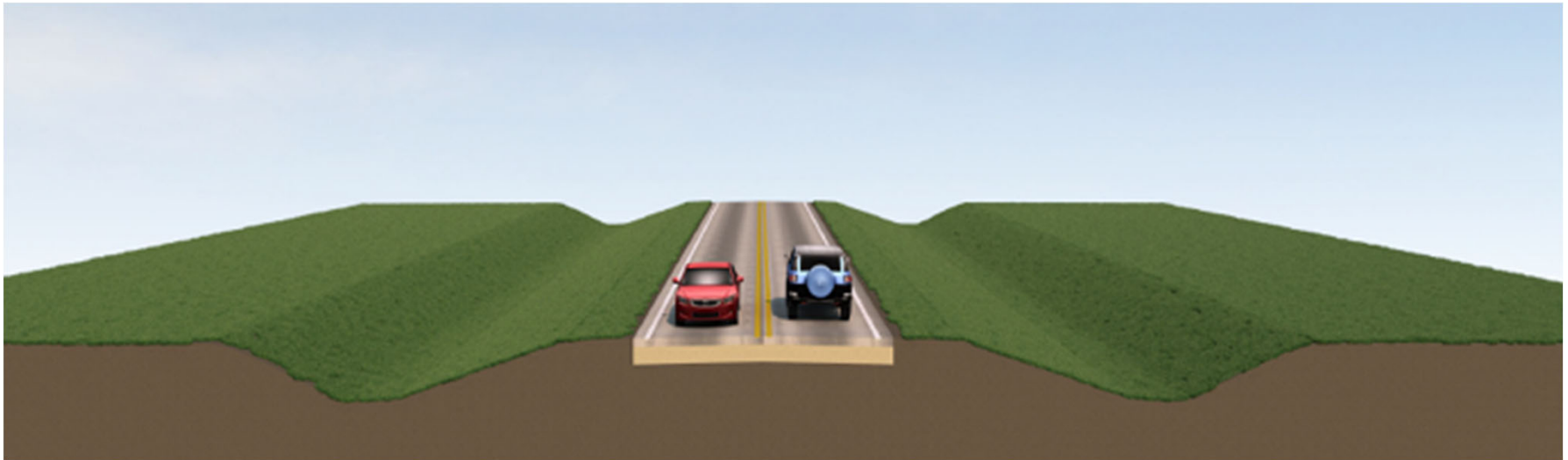


Existing Conditions



JANUARY 12, 2022

Existing Conditions



- Inconsistent US 20 corridor widths
- Failing pavement
- Outdated lighting (urban area)
- Drainage issues
- Lacks pedestrian & bicycle facilities




Traffic Analysis



JANUARY 12, 2022

“Level of Service” ... What does that mean?

LOS A		<ul style="list-style-type: none">• Free flowing• Uninterrupted vehicle
LOS B		<ul style="list-style-type: none">• Stable flow• Other vehicles are more noticeable
LOS C		<ul style="list-style-type: none">• Stable flow• Vehicle operations affected by other vehicles
LOS D		<ul style="list-style-type: none">• High density free flow• Operation of vehicle is affected by other vehicles
LOS E		<ul style="list-style-type: none">• High density traffic flow, nearing capacity• Operating conditions are extremely poor
LOS F		<ul style="list-style-type: none">• Forced or breakdown flow• Amount of traffic exceeds capacity

Typically, **no**
additional capacity
needed

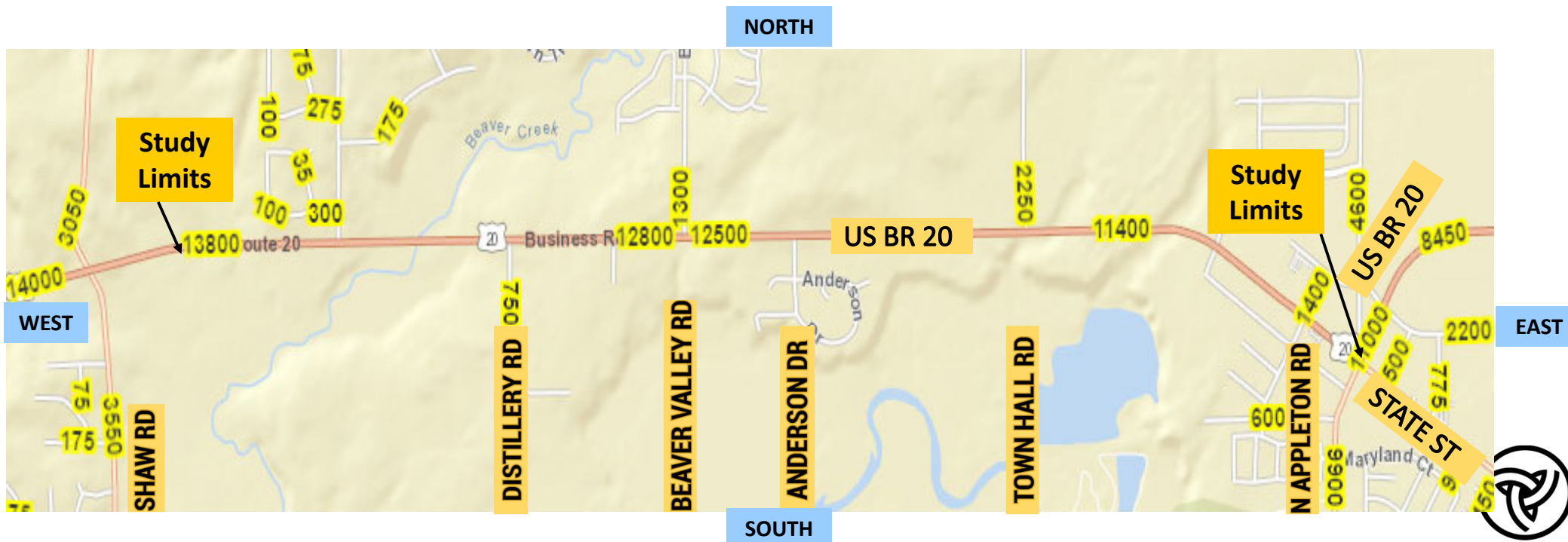
Typically,
additional capacity
needed



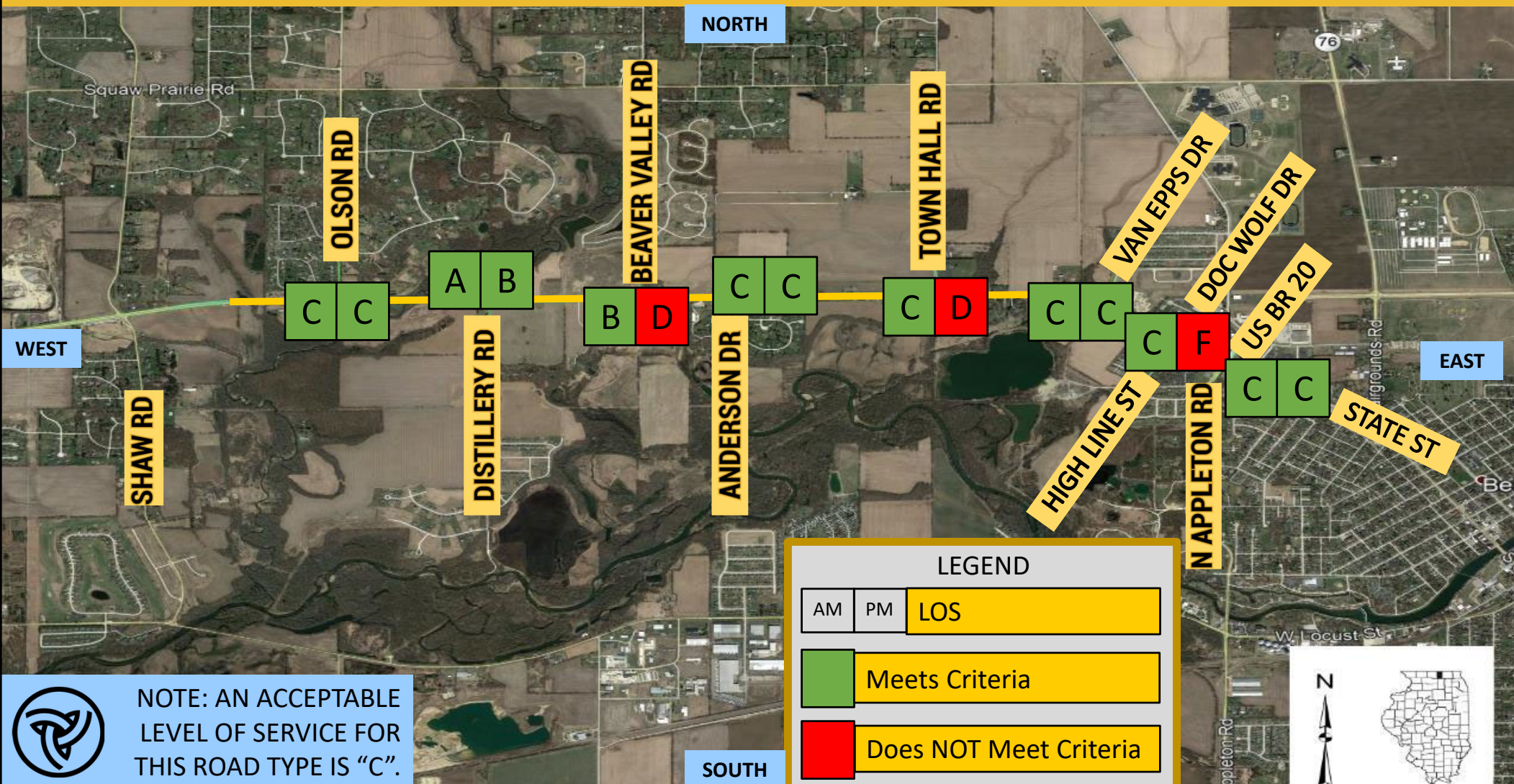
Traffic Analysis

Current Traffic Volumes:
11,400-13,800 vehicles per day

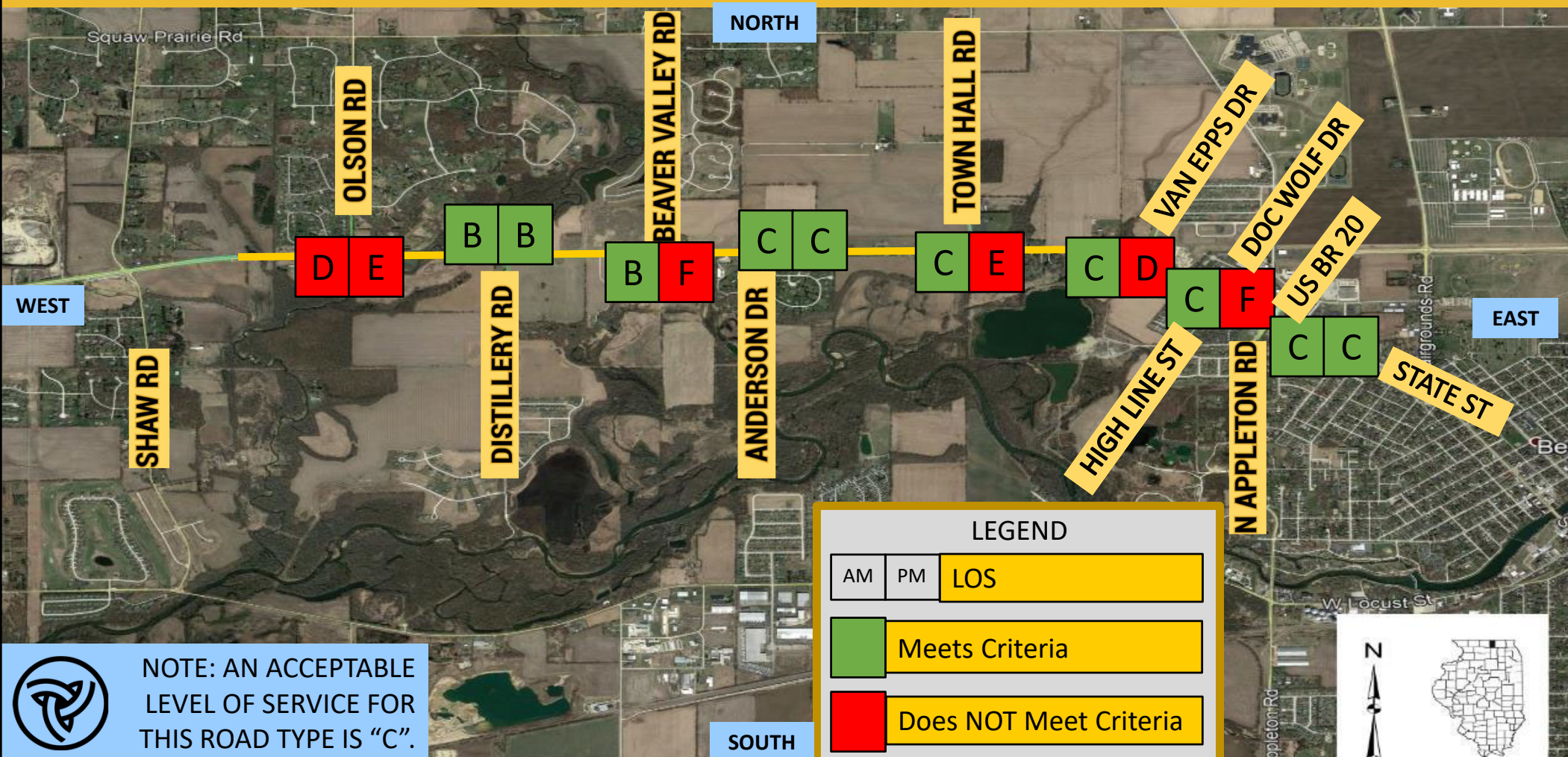
2045 Traffic Projections:
15,500-20,000 vehicles per day



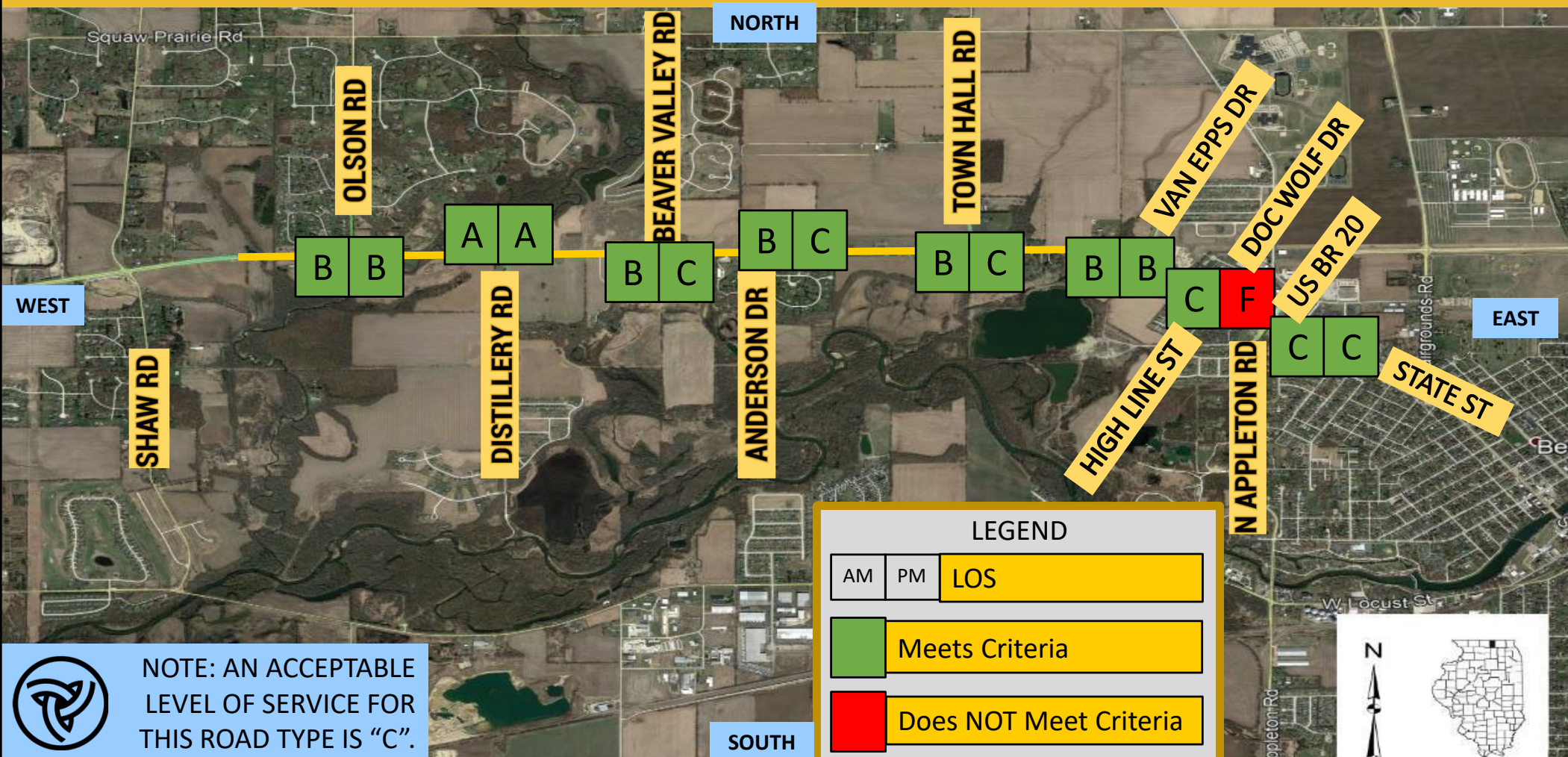
Existing Level of Service with Existing Geometry



Level of Service with 2045 Projected Traffic Volumes & Existing Geometry (Do Nothing Approach)



Level of Service with 2045 Projected Traffic Volumes & Widened Roadway (4-lanes)



Crash Analysis



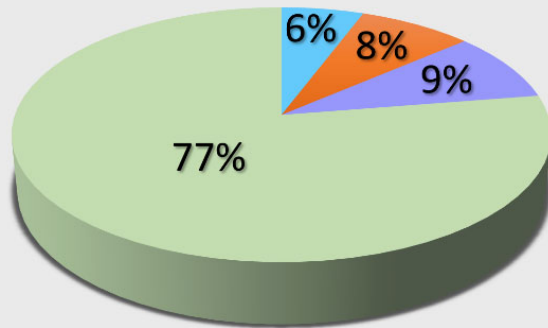
JANUARY 12, 2022

0 FATALITIES



Crash Summary (2014-2018)

CRASH SEVERITY SUMMARY



TYPE A

TYPE B

TYPE C

NO INJURY NOTED
OR PD ONLY

TYPE A = SERIOUS INJURY
TYPE B = MINOR INJURY
TYPE C = NO INJURY VISIBLE/REPORTED
PD ONLY = PROPERTY DAMAGE ONLY

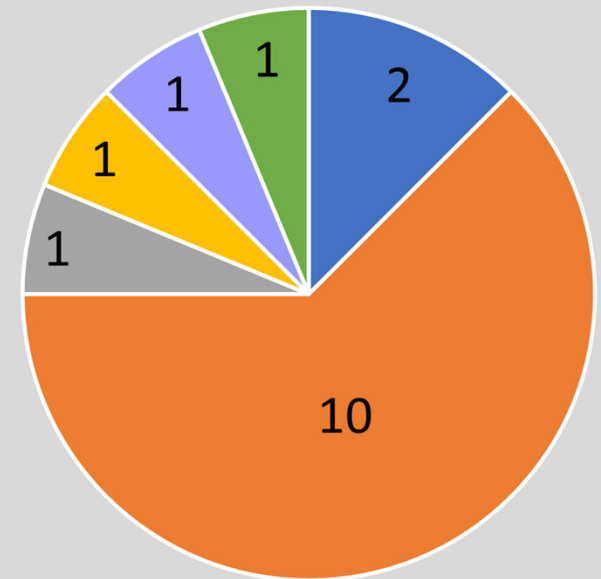
LOCATION	# CRASHES	%
Shaw to Olson Segment	10	4%
Olson Intersection	12	5%
Olson to Distillery Segment	10	4%
Distillery Intersection	16	7%
Distillery to Beaver Valley Segment	5	2%
Beaver Valley Intersection	9	4%
Beaver Valley to Anderson Segment	3	1%
Anderson Intersection	2	1%
Anderson to Town Hall Segment	8	4%
Town Hall Intersection	31	14%
Town Hall to Van Epps Segment	20	9%
Van Epps Intersection	12	5%
Van Epps to High Line/Doc Wolf Segment	1	0%
High Line/Doc Wolf Intersection	17	7%
High Line/Doc Wolf to State/Appleton Segment	1	0%
State/Appleton Intersection	70	31%
TOTAL	227	100%

Distillery Road & US Business Route 20



Total Crashes at
Intersection = 16

Crash Types



Animal

Rear End

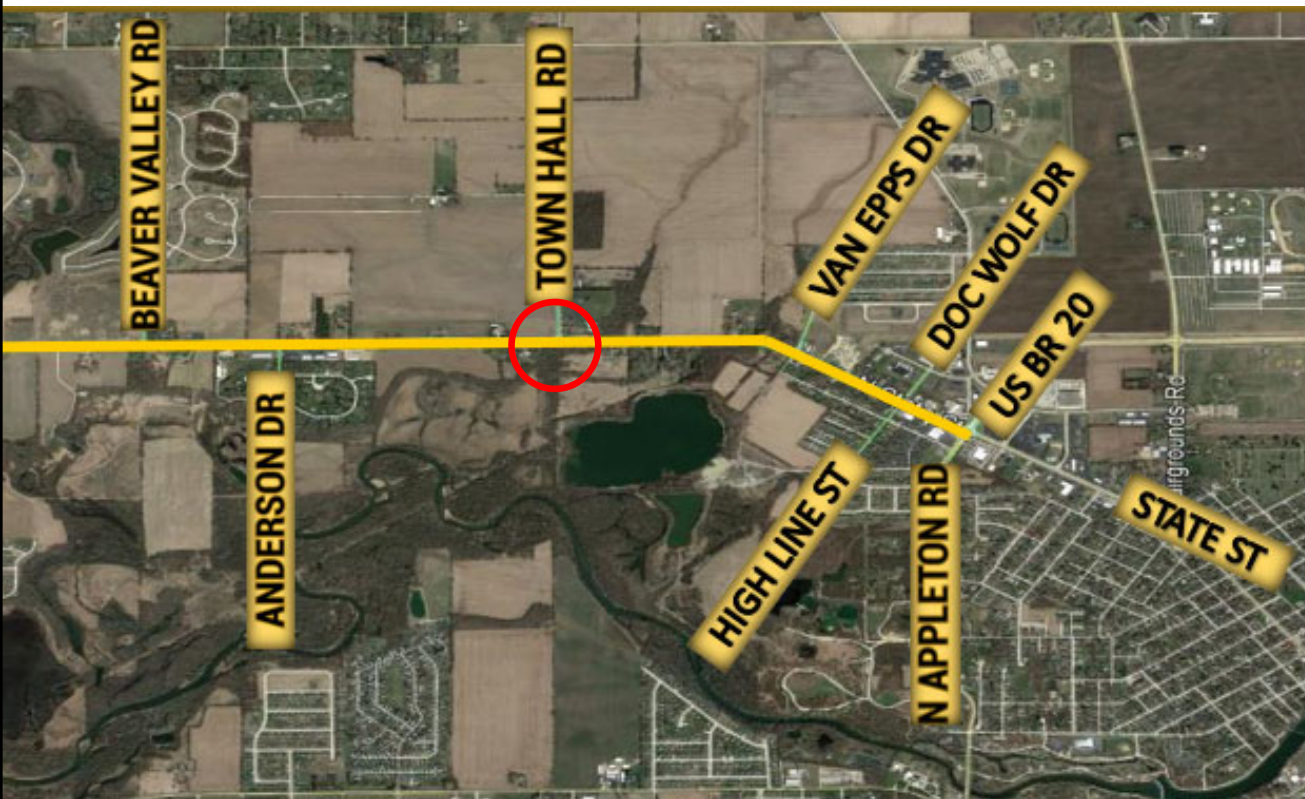
Sideswipe Same Direction

Turning

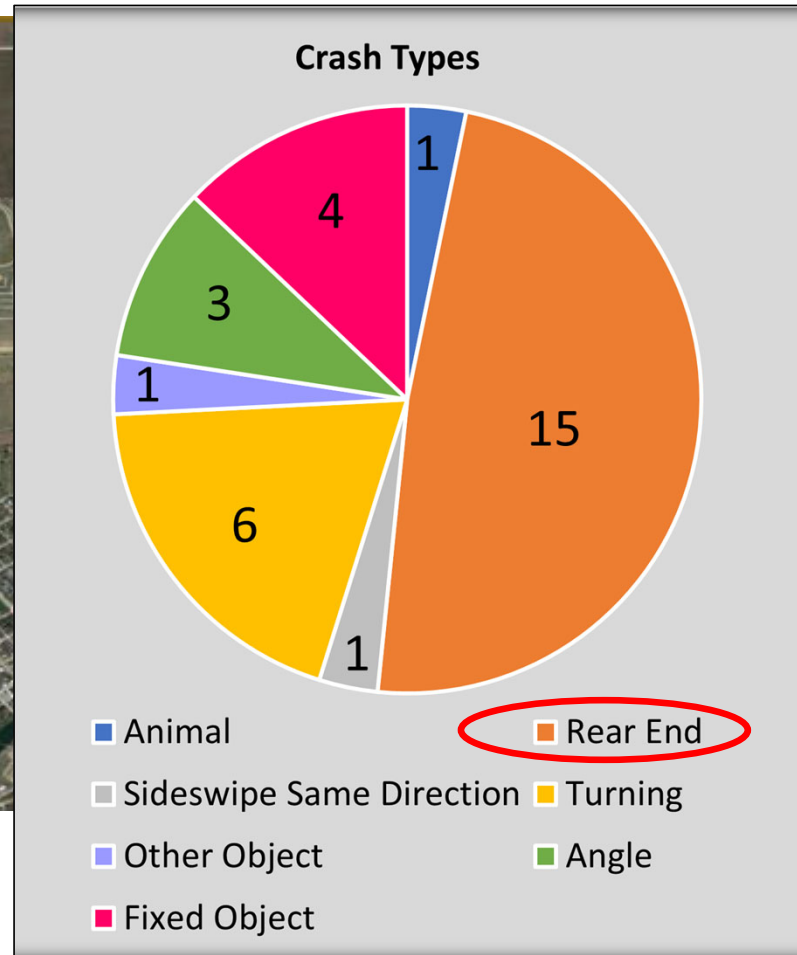
Other Object

Front to Front

Town Hall Road & US Business Route 20



Total Crashes at
Intersection = 31

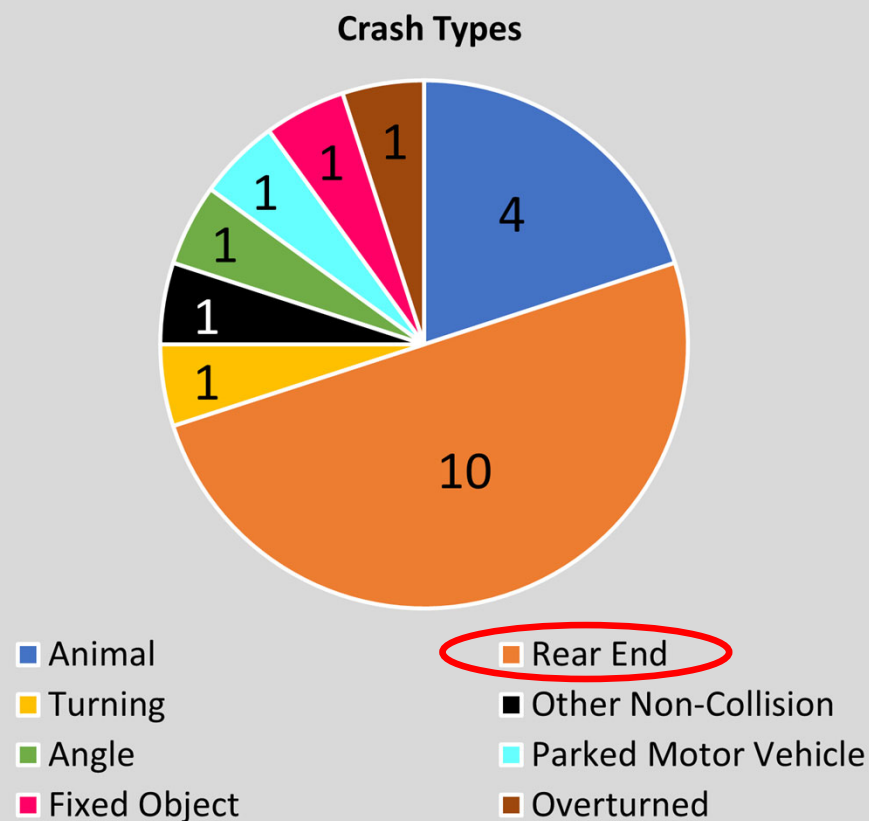


US Business Route 20 Segment

(Between Town Hall Road & Van Epps)



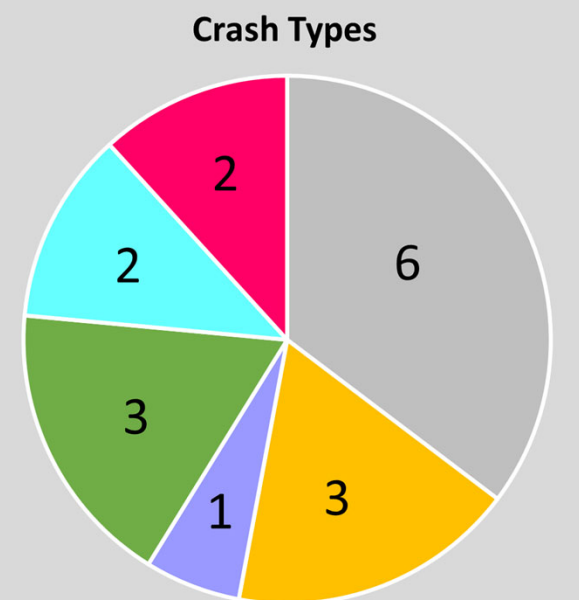
Total Crashes on
Road Segment = 20



High Line/Doc Wolf & US Business Route 20



Total Crashes at
Intersection = 17



Legend:

- Sideswipe Same Direction
- Turning
- Front to Rear
- Angle
- Parked Motor Vehicle
- Fixed Object

JANUARY 12, 2022

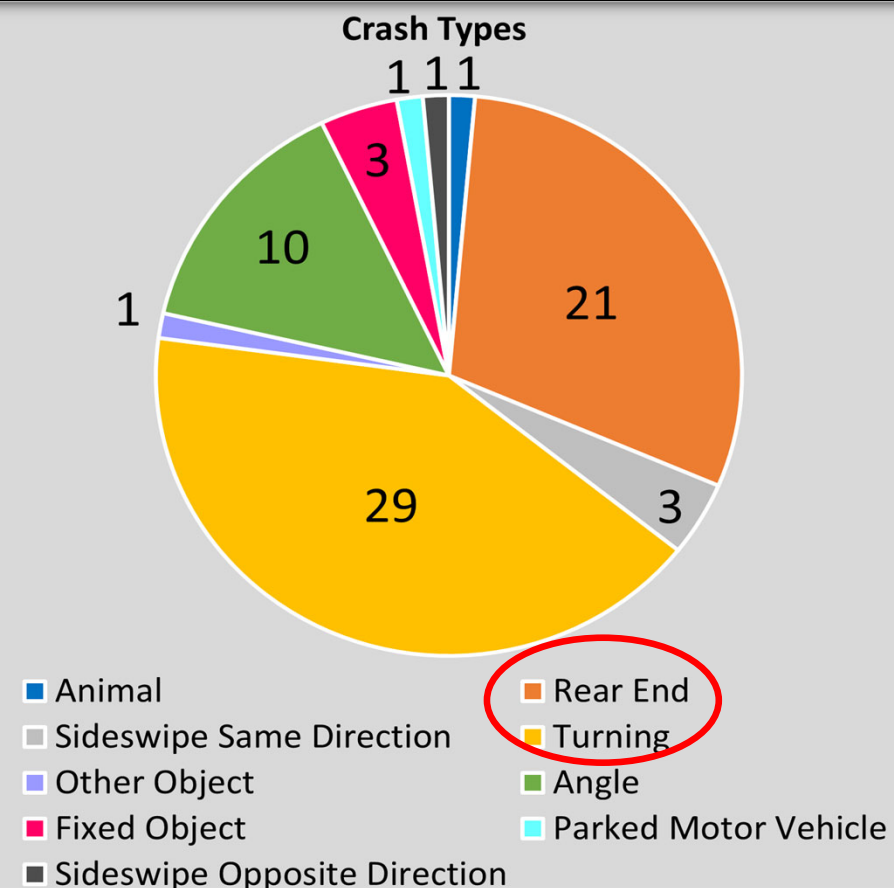


JANUARY 12, 2022

Appleton Road/State Street & US Business Route 20



Total Crashes at
Intersection = 70



JANUARY 12, 2022



JANUARY 12, 2022

Environmental Analysis



JANUARY 12, 2022

Environmental Analysis



- **In Progress**
- Inventory existing conditions: wetlands, trees, threatened & endangered species, archeological sites, historic structures and noise analysis
- Evaluate environmental impacts per alternative
- Minimize impacts while still achieving goal of accommodating traffic needs



Potential Improvements



JANUARY 12, 2022

Proposed Improvement Goals

Improve pavement condition and aging infrastructure

Improve regional and local travel to accommodate future traffic demands/growth

Improve pedestrian and bicycle access

Reduce potential crash generators



Study Constraints

- **Drainage and floodplain**
- **Right-of-Way (ROW)**
 - Proximity of existing homes, businesses, and agricultural land
- **Existing Environmental Features**
- **Maintaining access during construction**
- **Future Development in the vicinity?**



Potential Improvements

Existing Conditions – 2-lane roadway, typically



Potential Improvements – Widening to 4-lane roadway



Potential Improvements

Potential Improvements – Widening to 5-lane roadway



Potential Improvements Overview

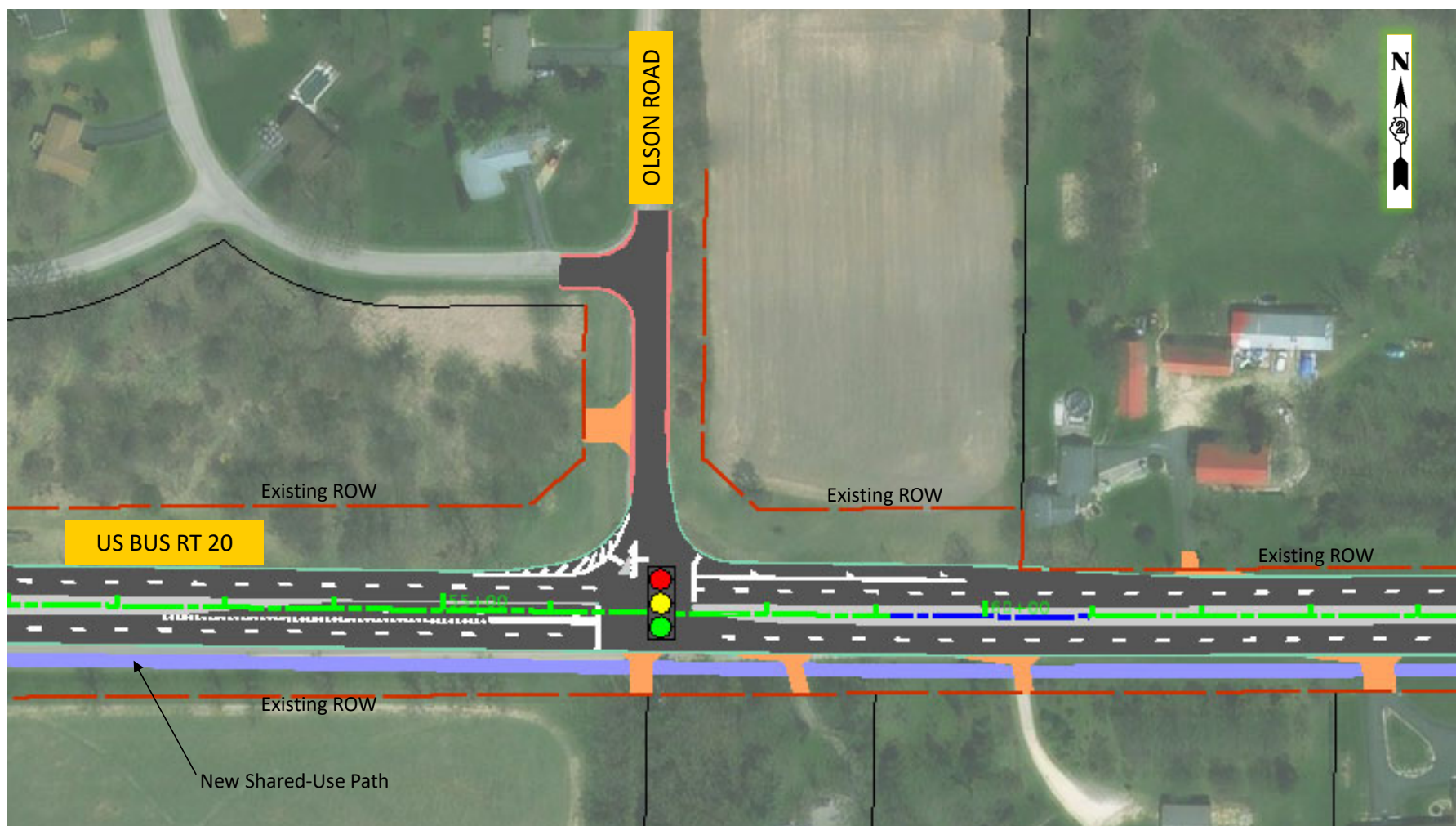


Western Project Limits



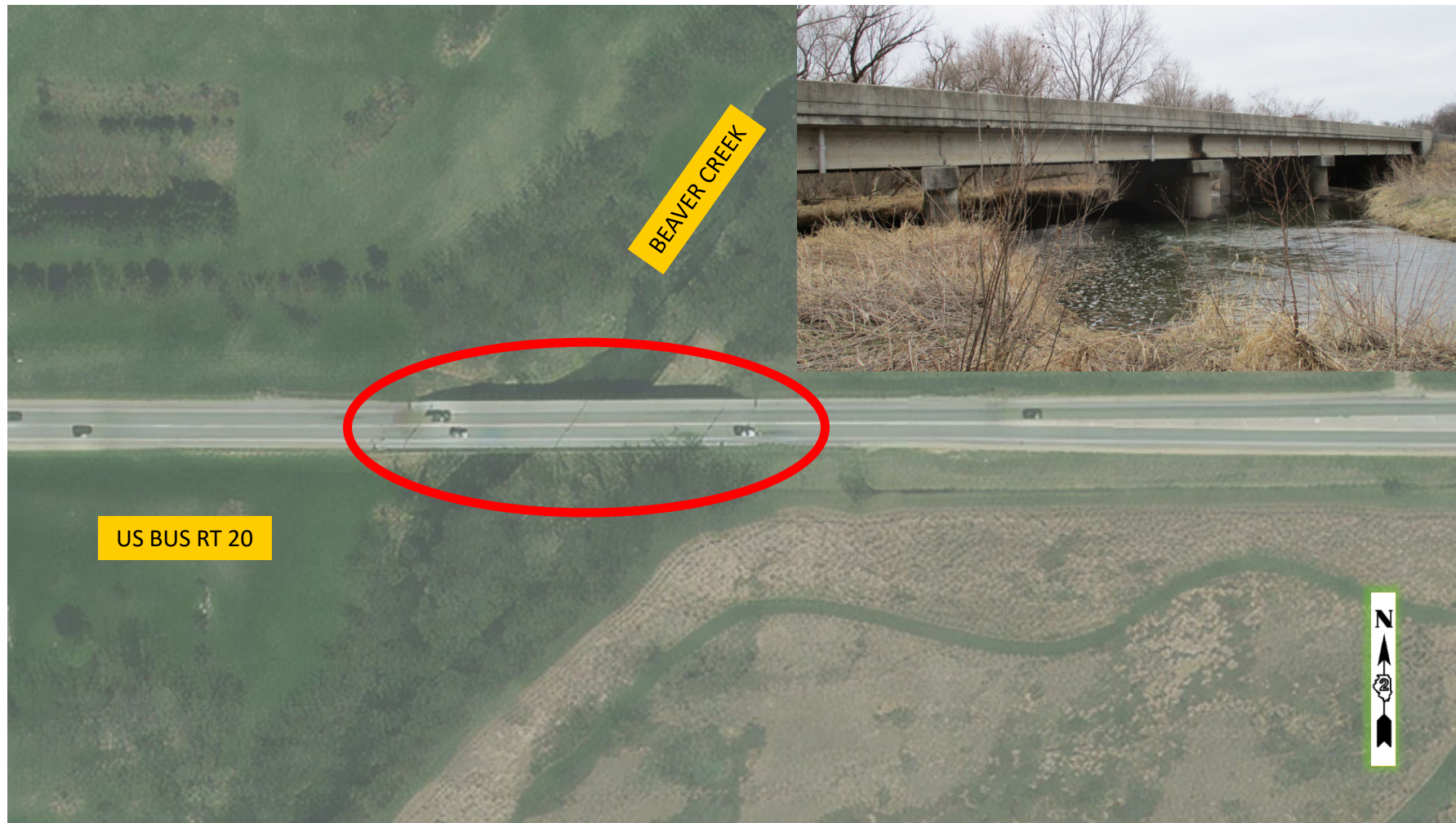
JANUARY 12, 2022

Olson Road Intersection



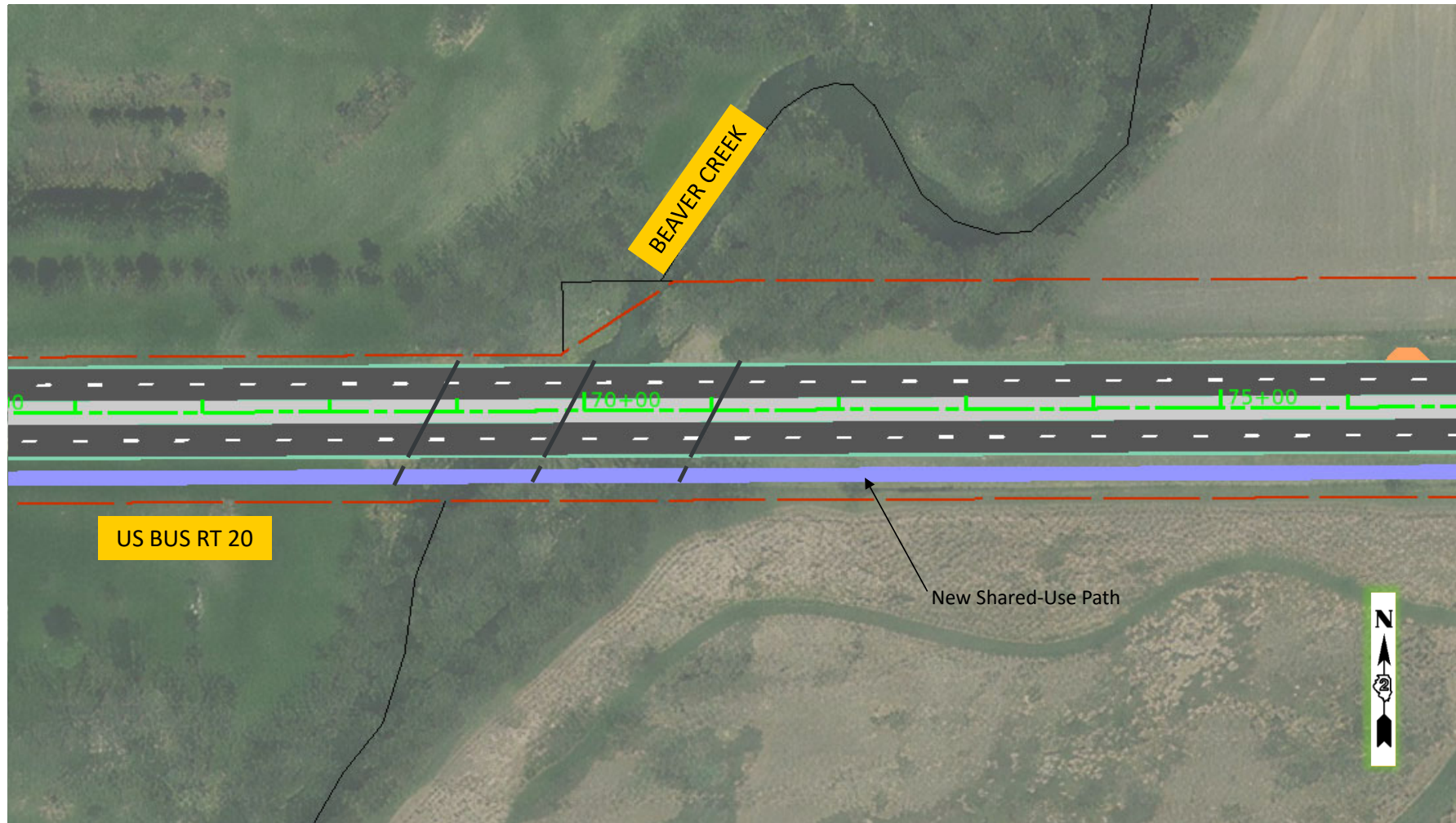
JANUARY 12, 2022

Beaver Creek Bridge Structures



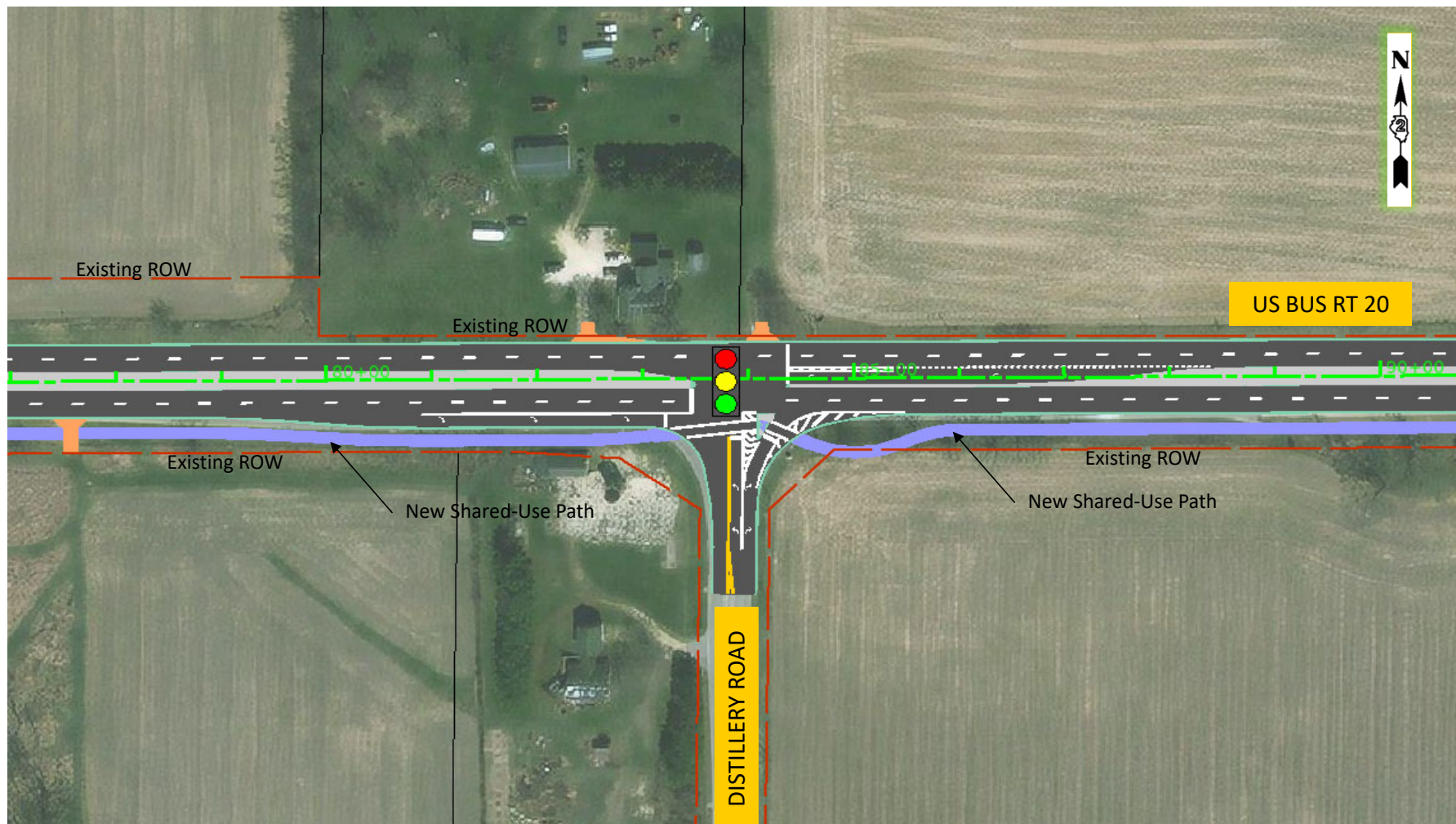
JANUARY 12, 2022

Beaver Creek Bridge Structures



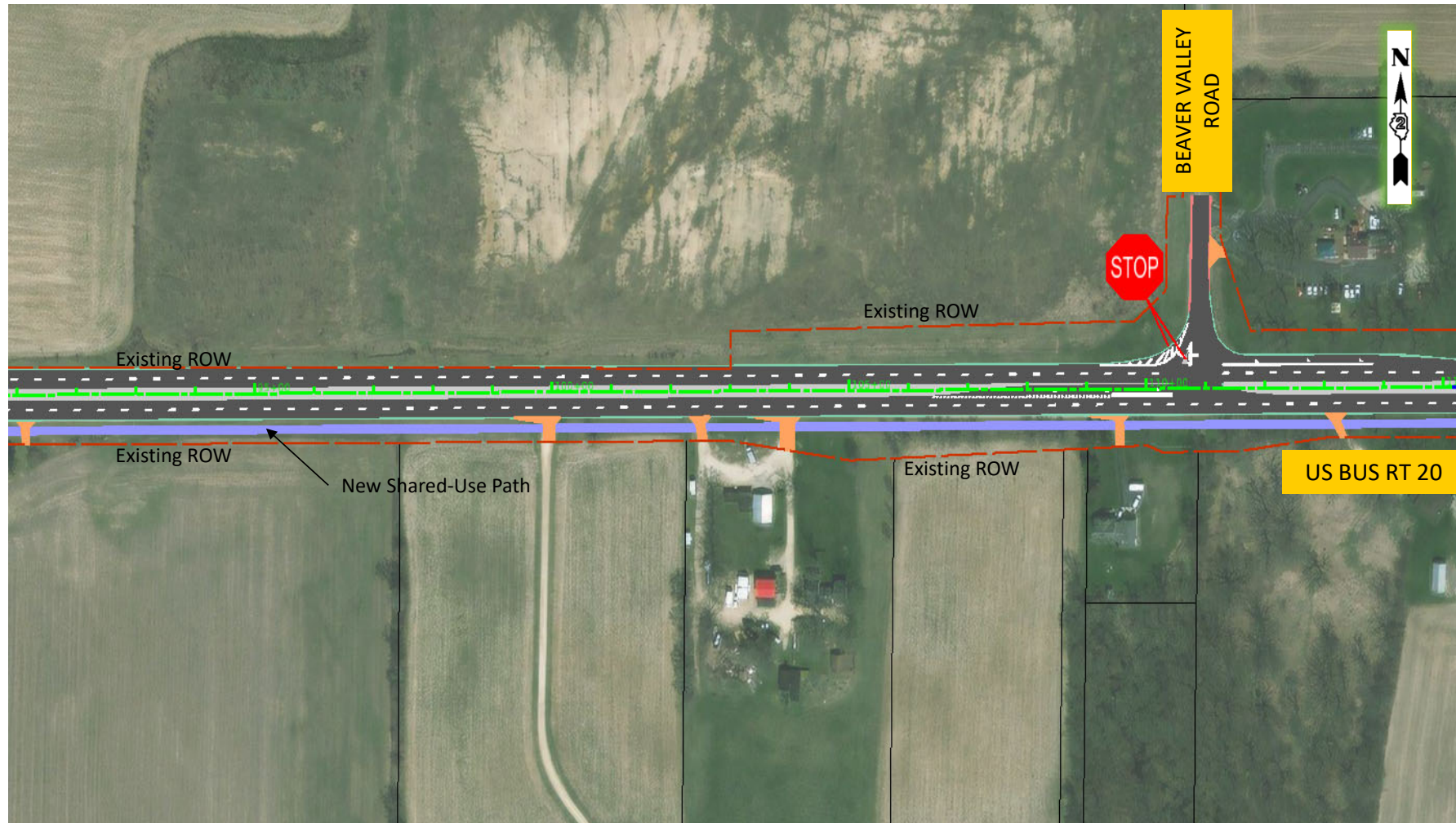
JANUARY 12, 2022

Distillery Road Intersection



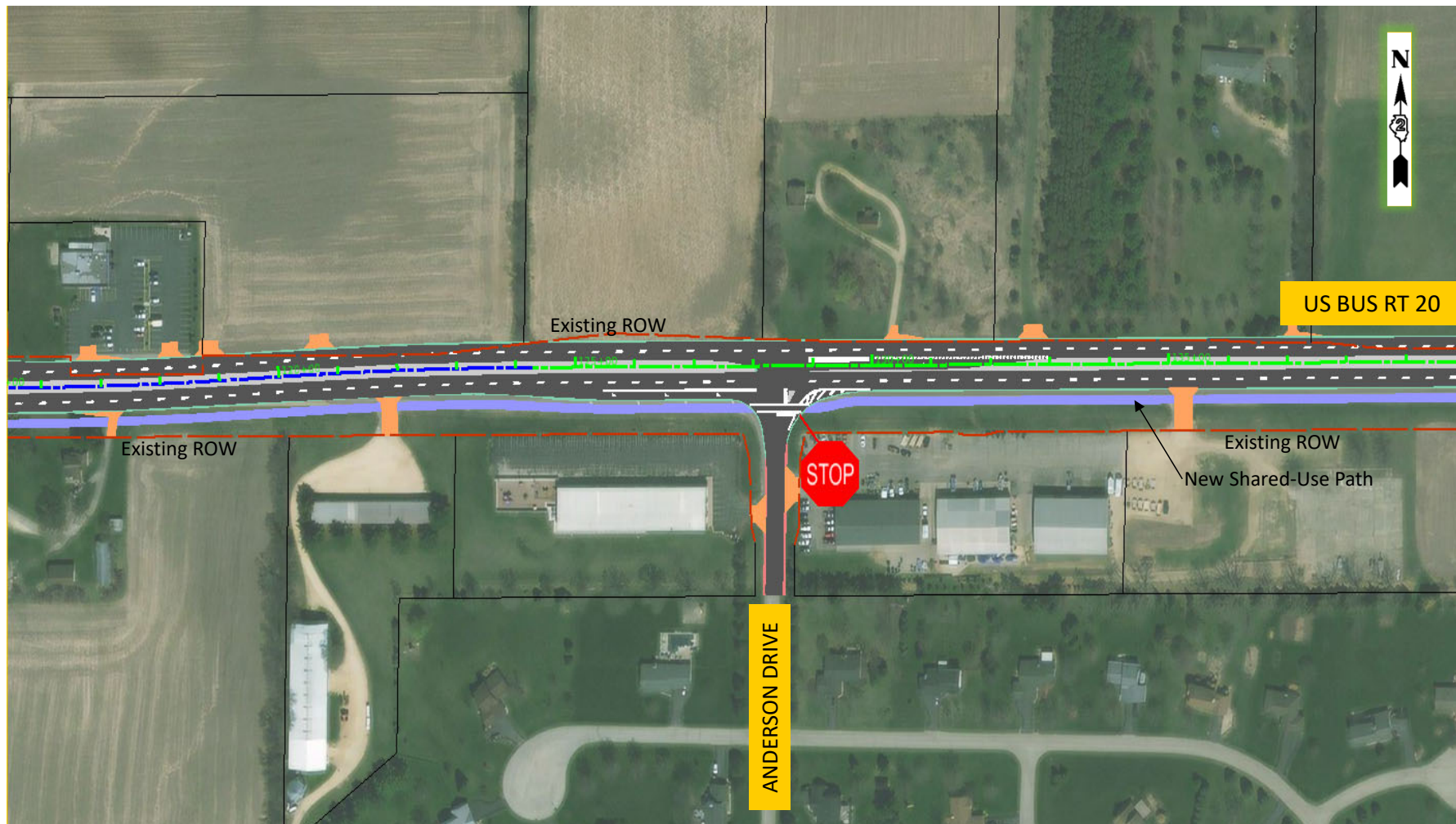
JANUARY 12, 2022

Beaver Valley Road Intersection



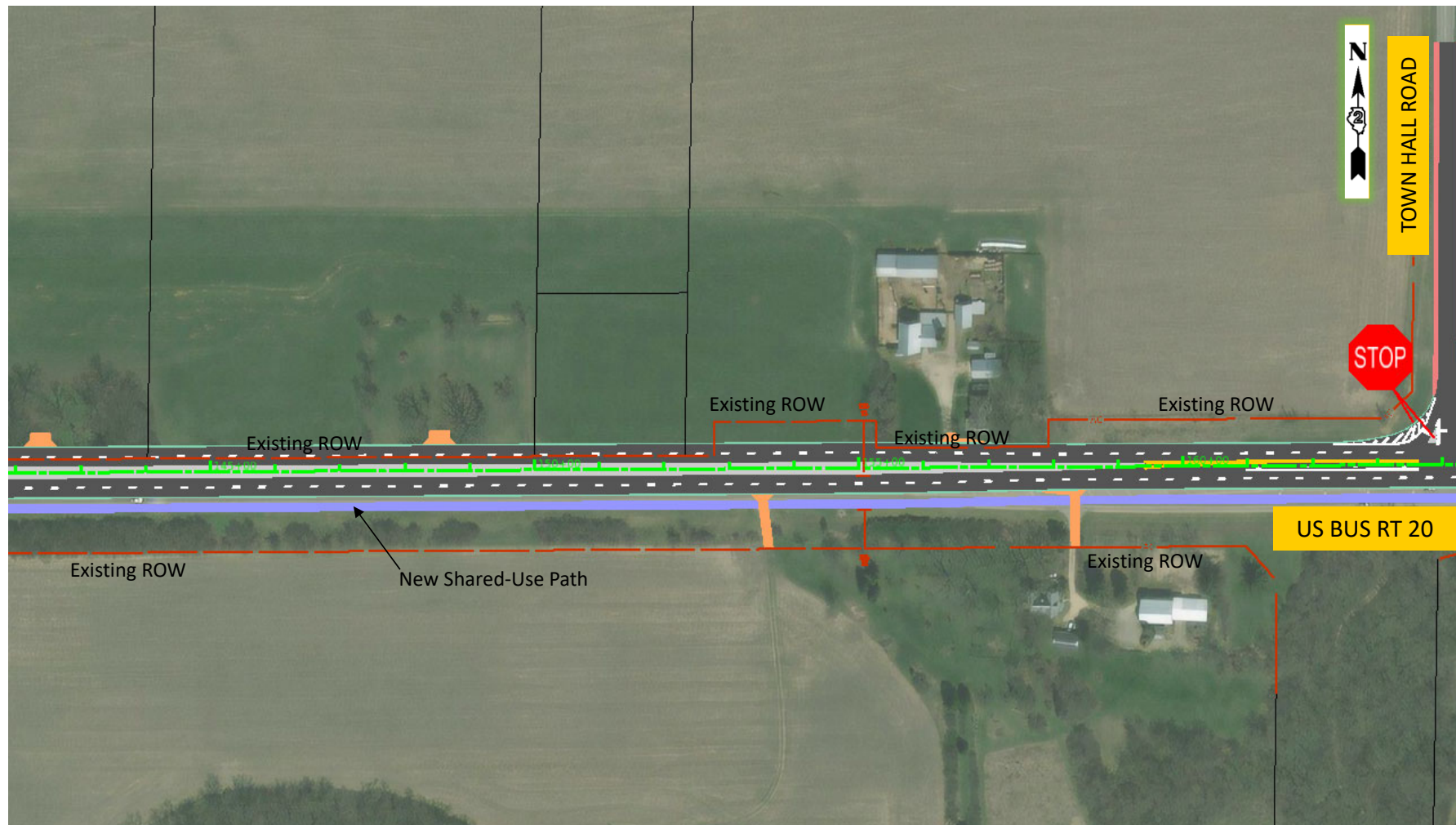
JANUARY 12, 2022

Anderson Drive Intersection



JANUARY 12, 2022

Town Hall Road Intersection



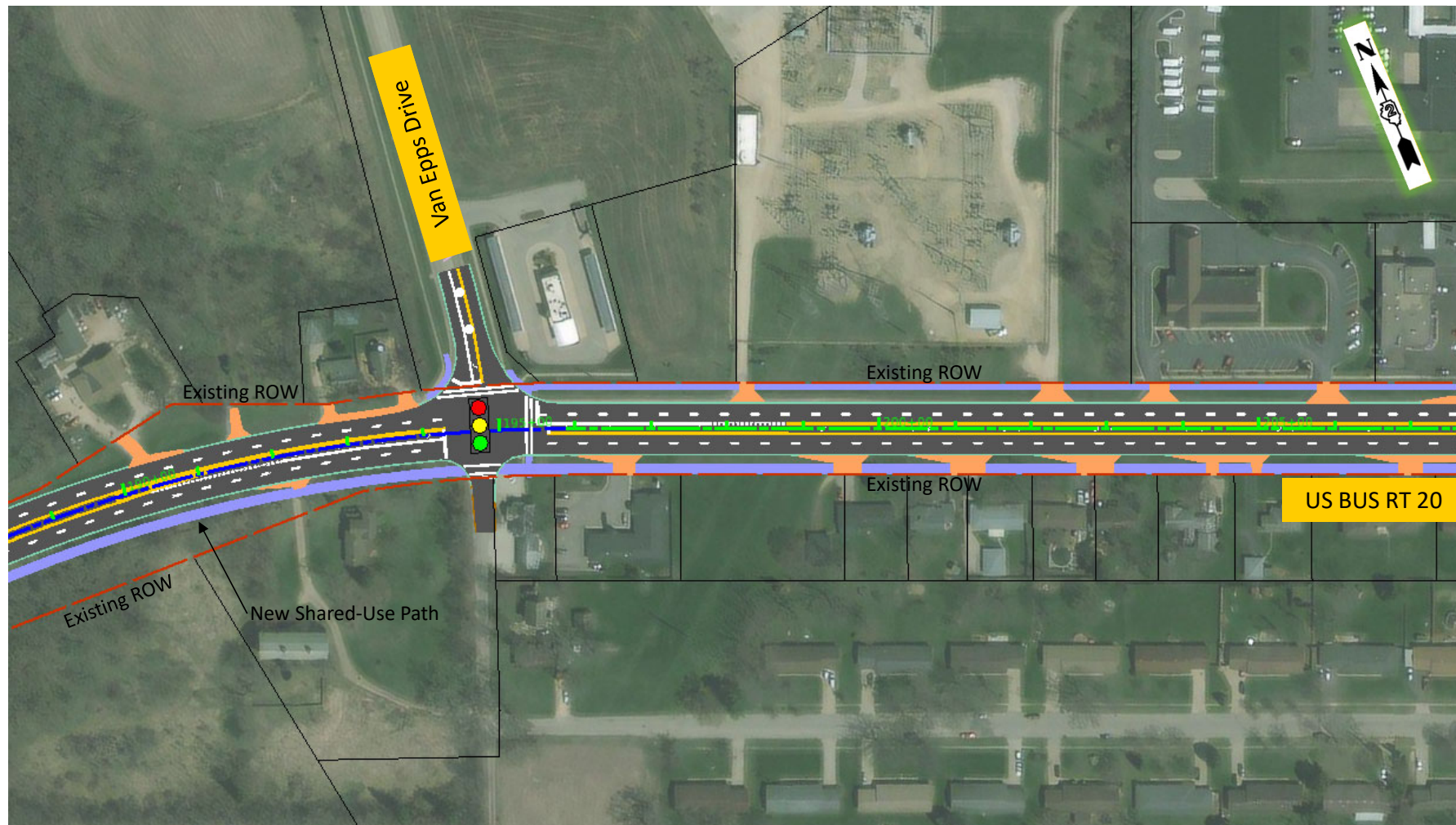
JANUARY 12, 2022

Between Town Hall & Van Epps



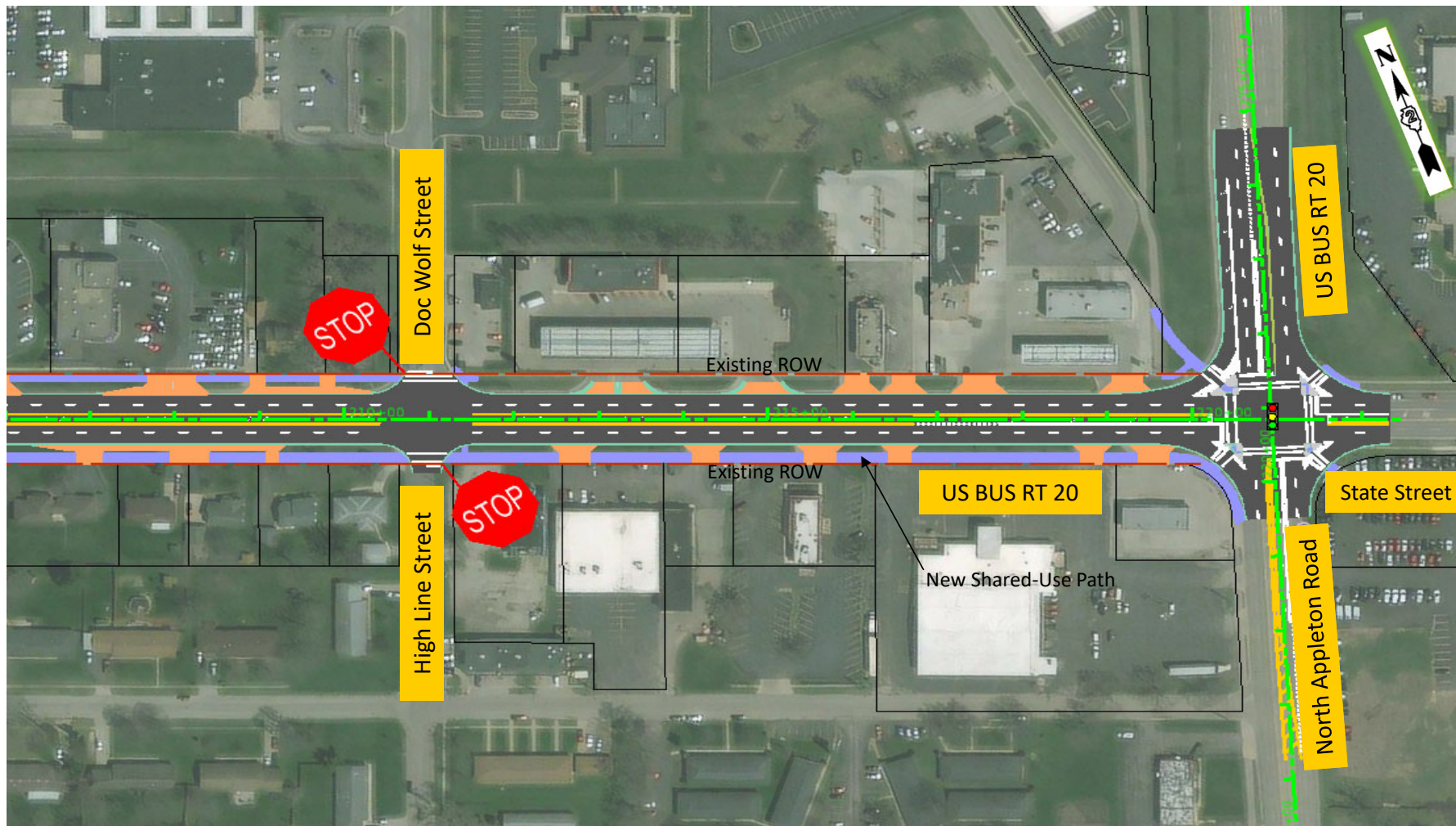
JANUARY 12, 2022

Van Epps Drive Intersection



JANUARY 12, 2022

North Appleton Road/State Street



JANUARY 12, 2022

Drainage Improvements

Improve roadside ditches

Add curb & gutter with inlets; outlet to improved ditch section



Drainage Improvements



JANUARY 12, 2022

Drainage Improvements

Improve roadside ditches

Add curb & gutter with inlets; outlet to improved ditch section

Replacing bridge/culvert structures



Drainage Improvements

Drainage Culverts



Drainage Improvements

Improve roadside ditches

Add curb & gutter with inlets; outlet to improved ditch section

Replacing bridge/culvert structures

Add detention to address flooding issue near the intersection of Anderson Drive



Public Involvement



JANUARY 12, 2022

Public Involvement

Goals

- **Engage** communities, townships, counties, residents, and elected officials to **share** study information
- **Inform and Coordinate** with potentially impacted property owners
- **Get feedback** on study elements and improvements

Engagement

- Public meetings
- Stakeholders: Meetings with impacted property owners and other stakeholders
- Study website
 - ❖ Updates, Progress, Comments, Questions



Public Involvement

How can you provide comments/questions?



Via Project Website:

tinyurl.com/USBusiness20Study

*Click on “Get Involved” tab and
select the link for the
“Questions/Comments Submittal”
form*



Via E-mail:

Steven.Robery@illinois.gov

*Subject: US Business Route 20
from Shaw Road to State
Street/Appleton Intersection*



Via Mail:

**Illinois Department of
Transportation
District 2
Studies and Plans
819 Depot Avenue
Dixon, IL 61021-3500
Attn: Steven Robery**

Project Website

idot.illinois.gov/transportation-system/transportation-management/featured-projects/index

View up to date information on Illinois' Covid-19 vaccine plan and vaccination eligibility from the [State of Illinois Coronavirus Response Site](#)

Omer Osman, Secretary

Governor JB Pritzker

Illinois Department of Transportation



About IDOT

Doing Business

Travel Information

Transportation System

ENHANCED BY Google



Network Overview

Transportation Management

Transportation Safety

Transportation Research

Environment

Local Transportation Partners

Transportation System Home

Featured Projects

Each year, IDOT selects hundreds of projects that will positively impact the motorist, strengthen area economies by supplying new or improved travel options. This page is updated on. Utilizing the map and lists provided on this site, you will find significant news, status and updates on current construction projects.

Search..

Study Pages

- Adams County - IL 57 Quincy/Marblehead PEL Study
- Adams County - Quincy Memorial Bridge
- Boone County - Business U.S. 20 from Shaw Rd to State Street
- Boone County - IL 160 from Shaw Rd to State Street
- Coles County - I-57 - IL 16 Interchange Reconstruction
- Cook & DuPage Counties - Elgin O'Hare West Bypass
- Cook & DuPage Counties - I-55 Managed Lane Study
- Cook & Kane Counties - IL 62 from IL 25 to IL 68
- Cook & Lake Counties - US 14 Grade Separation Project Study
- Cook County - 47th Street at East Avenue
- Cook County - 55th Street: LaGrange Road to East Avenue

Project Pages

- Carroll County - US-52/IL 64 Over the Mississippi River Project
- Champaign County - I-74 CNRR Bridge Replacements
- Champaign County - Interstate 57/74 Interchange Reconstruction
- Cook & Will Counties - 159th Street Project
- Cook County - Cumberland Flyover
- Cook County-I-55 at Lake Shore Drive
- Cook County - I-57/294 Interchange Project
- Cook County - I-90 from I-190 to Harlem Ave. Project
- Cook County - IL 171 at I 55 Interchange Improvement
- Cook County - US 12/45 (Mannheim Rd) Reconstruction Project
- Cook County - US 45 Reconstruction and Widening

JANUARY 12, 2022

Project Website

idot.illinois.gov/projects/Boone-County-Business-US-20-from-Shaw-Rd-to-State-Street

Illinois Department of Transportation



About IDOT Doing Business Travel Information Transportation System

ENHANCED BY Google



U.S. Business 20 from Shaw Road through the State Street/Appleton Road intersection in Belvidere

As a part of the historic and bipartisan Rebuild Illinois plan, the Illinois Department of Transportation has initiated a Phase 1, Preliminary Engineering and Environmental Study for U.S. Business 20 from Shaw Road through the State Street/Appleton Road intersection in Belvidere

The study will evaluate reconstruction of approximately 3.5 miles of roadway and the expansion from two lanes to four lanes to accommodate future traffic projections.

This website has been created to provide information to the public about the project as the study develops and to facilitate public input by providing a means to ask questions or comment on the project.

A Virtual Public Information Meeting is planned for Wednesday, Jan. 12 from 5 to 6 p.m. This meeting will introduce the Preliminary Engineering and Environmental Study for the proposed roadway improvement and solicit feedback regarding current conditions and potential improvement needs. Click on the "Get Involved" tab for more details and how to register to attend the virtual meeting.

If you would like to submit your name and contact information to be added to the project mailing list, please click on the "Get Involved" tab below and then select the link for the Questions/Comments Submittal Form. Provide your contact information on the form and indicate that you would like to be added to the project mailing list in the Question/Comments field. This form can also be used to submit general questions about the project.

Overview & Scope Schedule Resources FAQ's **Get Involved**

Public Meetings

A Virtual Public Information Meeting is planned for Wednesday, January 12, 2022, from 5 to 6 p.m. This meeting will introduce the Preliminary Engineering and Environmental Study for the proposed roadway improvement and solicit feedback regarding current conditions and potential improvement needs.

HOW TO REGISTER FOR THE VIRTUAL PUBLIC MEETING

Visit <https://www.tinyurl.com/USB20Study-VPM1>

Complete and submit registration form

Check inbox for registration confirmation message with information to join meeting by Zoom or telephone

In addition to a video presentation introducing the study, the meeting will include IDOT personnel and representatives from our consultant team. Exhibits will be available for review and the meeting will include live surveys and question-and-answer session.

If you are unable to attend the virtual public meeting, it will be recorded and the recording and exhibits will be available in the "Resources" tab of this project website after the meeting.

If you would like to submit your name and contact information to be added to the project mailing list, please click on the "Questions/Comments" submittal form link below and submit your contact information to receive future project updates.

Contact Us

As the project progresses, we will update this website to ensure you are kept informed. The study team is interested in hearing your ideas and opinions. If you have questions or comments about the study, please fill out the electronic Questions/Comments Submittal Form at: <https://apps.dot.illinois.gov/WER/?from=40>

JANUARY 12, 2022

Live Q&A



Tammy Wierciak
Metro Strategies Group



Michael Kuehn
IDOT Geometrics



Amber Petkevicius
Hanson Project Engineer



Steven Robery
IDOT Study Contact
& Project Manager



John Nelson
Hanson Project
Manager



Mark Heaton
Hanson Roadway
Lead



JANUARY 12, 2022

Next Steps



JANUARY 12, 2022

Next Steps

2021

Phase I

Spring

- Existing Conditions Analysis

Fall

- Environmental Study

2022

Winter

- Public Meeting #1

Spring

- Design Report
- Structural Review

Fall

- Environmental Report

2023

Winter

- Public Meeting #2
- Additional Public Outreach

Phase II

- Prepare Design Plans for Bid
- Right of Way

Stay Connected!

- Website
- Email
- Mail
- Comment/
Question



***THANK
YOU!***

CONTACT US

Steven Robery
Steven.Robery@illinois.gov

tinyurl.com/USBusiness20Study

