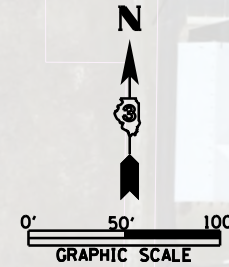
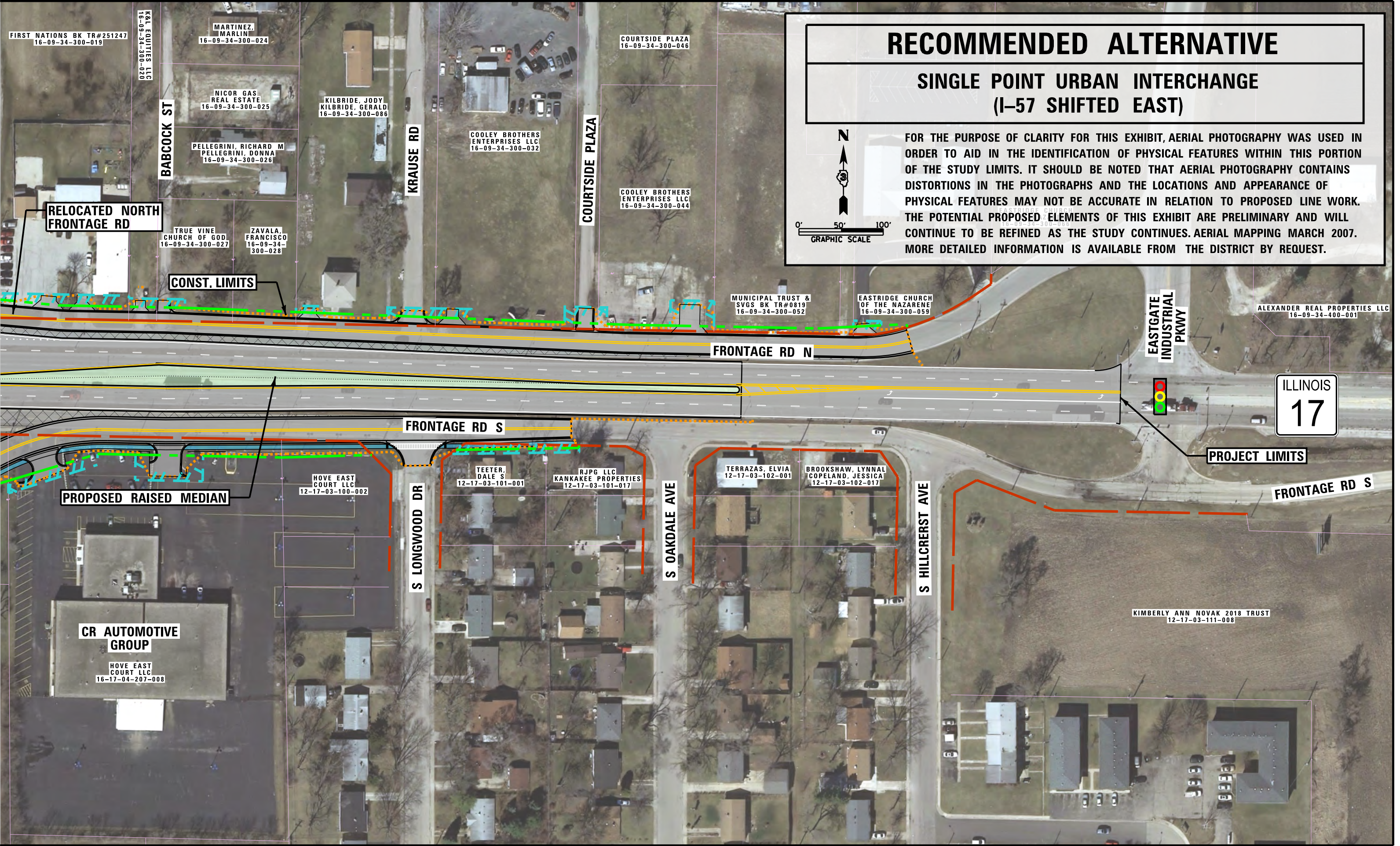


RECOMMENDED ALTERNATIVE

SINGLE POINT URBAN INTERCHANGE (I-57 SHIFTED EAST)



FOR THE PURPOSE OF CLARITY FOR THIS EXHIBIT, AERIAL PHOTOGRAPHY WAS USED IN ORDER TO AID IN THE IDENTIFICATION OF PHYSICAL FEATURES WITHIN THIS PORTION OF THE STUDY LIMITS. IT SHOULD BE NOTED THAT AERIAL PHOTOGRAPHY CONTAINS DISTORTIONS IN THE PHOTOGRAPHS AND THE LOCATIONS AND APPEARANCE OF PHYSICAL FEATURES MAY NOT BE ACCURATE IN RELATION TO PROPOSED LINE WORK. THE POTENTIAL PROPOSED ELEMENTS OF THIS EXHIBIT ARE PRELIMINARY AND WILL CONTINUE TO BE REFINED AS THE STUDY CONTINUES. AERIAL MAPPING MARCH 2007. MORE DETAILED INFORMATION IS AVAILABLE FROM THE DISTRICT BY REQUEST.



RELOCATED NORTH FRONTAGE RD

CONST. LIMITS

FRONTAGE RD N

FRONTAGE RD S

PROPOSED RAISED MEDIAN

CR AUTOMOTIVE GROUP

PROJECT LIMITS

ILLINOIS 17

FRONTAGE RD S