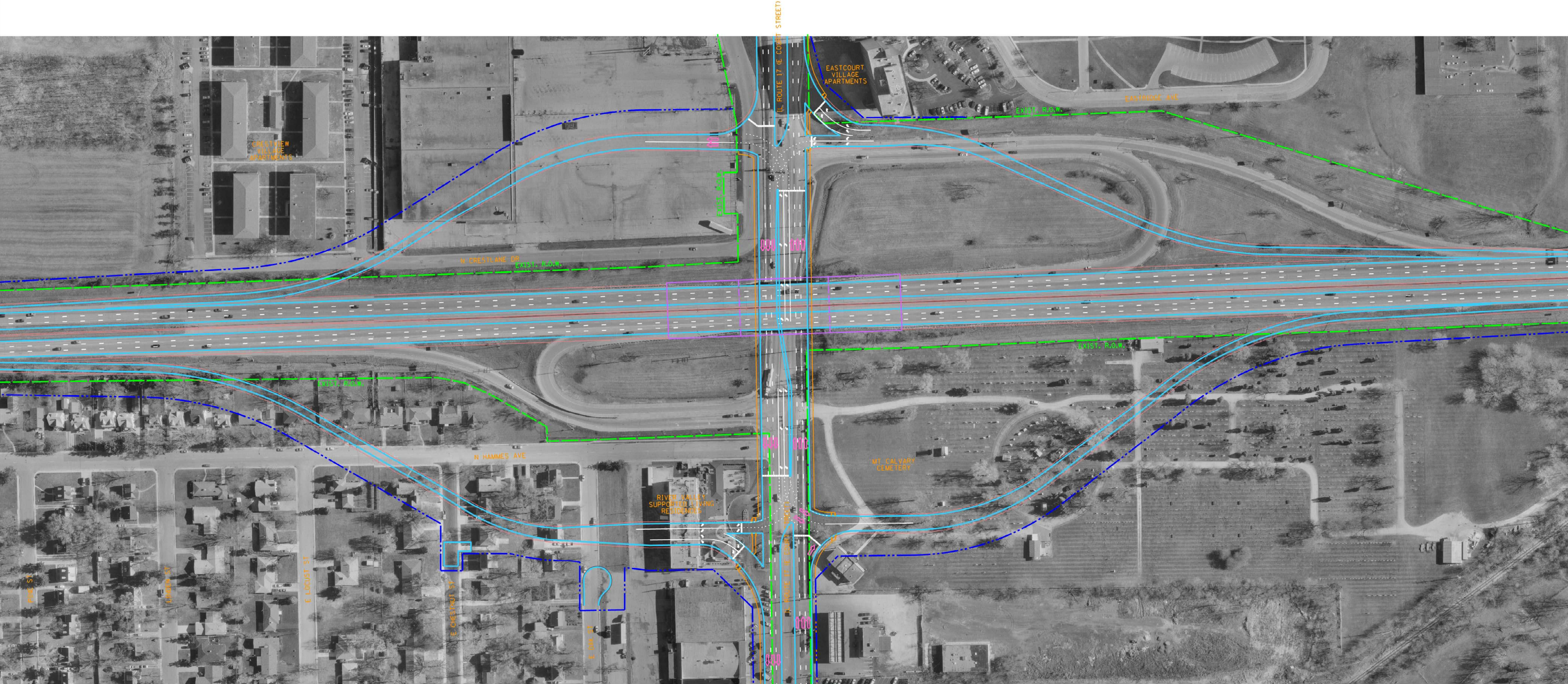


# INTERCHANGE TYPE STUDY

## ALTERNATIVE 1

STANDARD DIAMOND INTERCHANGE  
NOT RECOMMENDED DUE TO IMPACTS



LEGEND:

- EXISTING RIGHT-OF-WAY
- PRELIMINARY PROPOSED RIGHT-OF-WAY

THIS INTERCHANGE CONFIGURATION WAS NOT RECOMMENDED BECAUSE THE AMOUNT OF RIGHT-OF-WAY REQUIRED FOR CONSTRUCTION IS EXCESSIVE, RESIDENTIAL DISPLACEMENTS AND AN IMPACT TO MT. CALVARY CEMETERY.

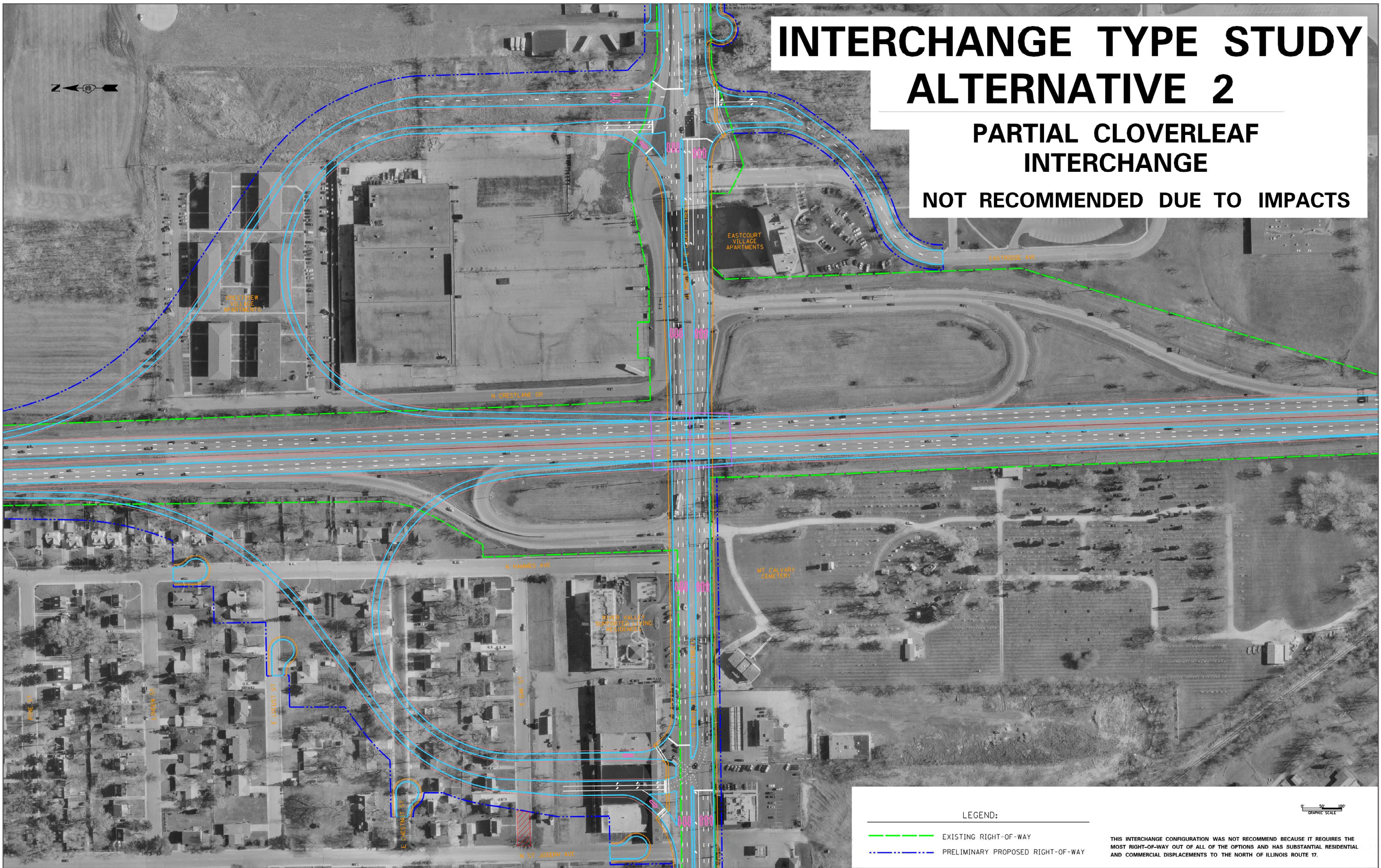
0 50 100  
GRAPHIC SCALE



# INTERCHANGE TYPE STUDY ALTERNATIVE 2

## PARTIAL CLOVERLEAF INTERCHANGE

NOT RECOMMENDED DUE TO IMPACTS



### LEGEND:

- EXISTING RIGHT-OF-WAY
- PRELIMINARY PROPOSED RIGHT-OF-WAY

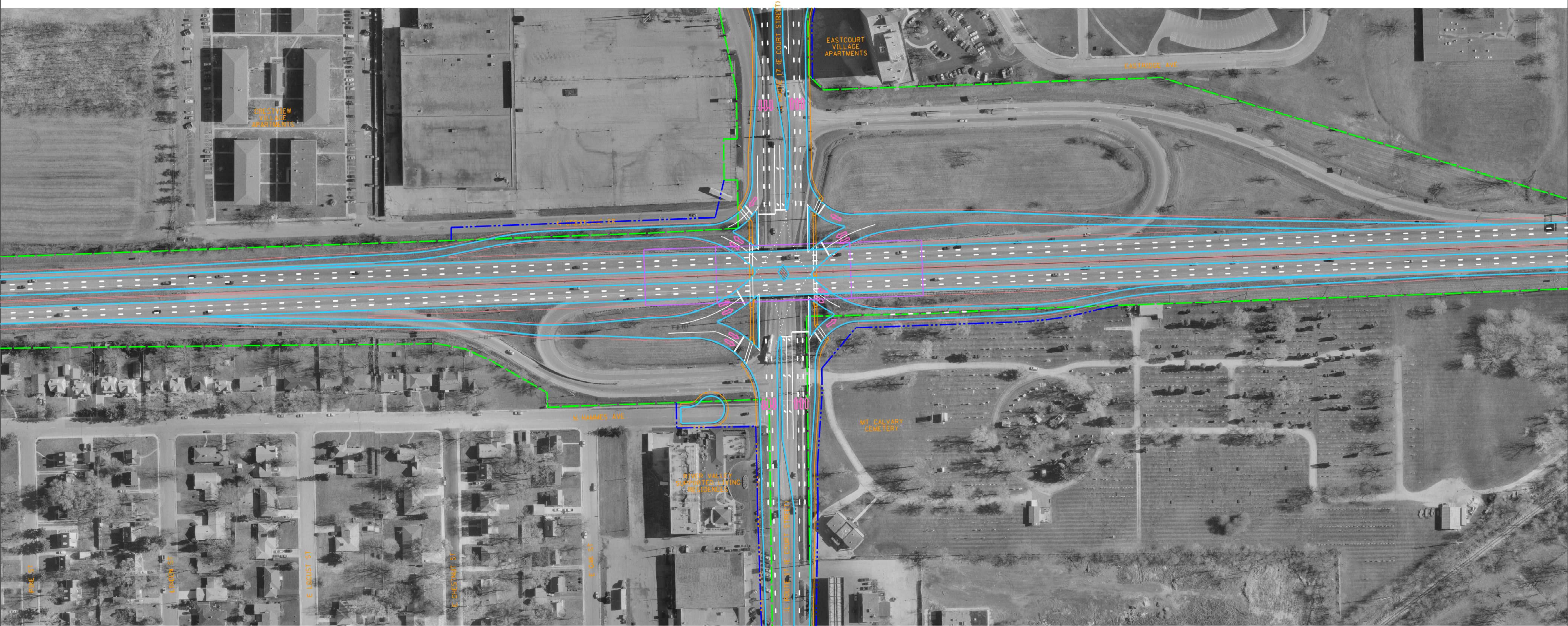
THIS INTERCHANGE CONFIGURATION WAS NOT RECOMMEND BECAUSE IT REQUIRES THE MOST RIGHT-OF-WAY OUT OF ALL OF THE OPTIONS AND HAS SUBSTANTIAL RESIDENTIAL AND COMMERCIAL DISPLACEMENTS TO THE NORTH OF ILLINOIS ROUTE 17.



# INTERCHANGE TYPE STUDY

## ALTERNATIVE 3

SINGLE POINT URBAN INTERCHANGE (EXISTING I-57 ALIGNMENT)  
NOT RECOMMENDED DUE TO IMPACTS



LEGEND:

- EXISTING RIGHT-OF-WAY
- PRELIMINARY PROPOSED RIGHT-OF-WAY

THIS INTERCHANGE CONFIGURATION WAS NOT RECOMMENDED BECAUSE OF THE COST OF MAINTAINING TRAFFIC DURING CONSTRUCTION AND IMPACTS TO MT CALVARY CEMETERY.

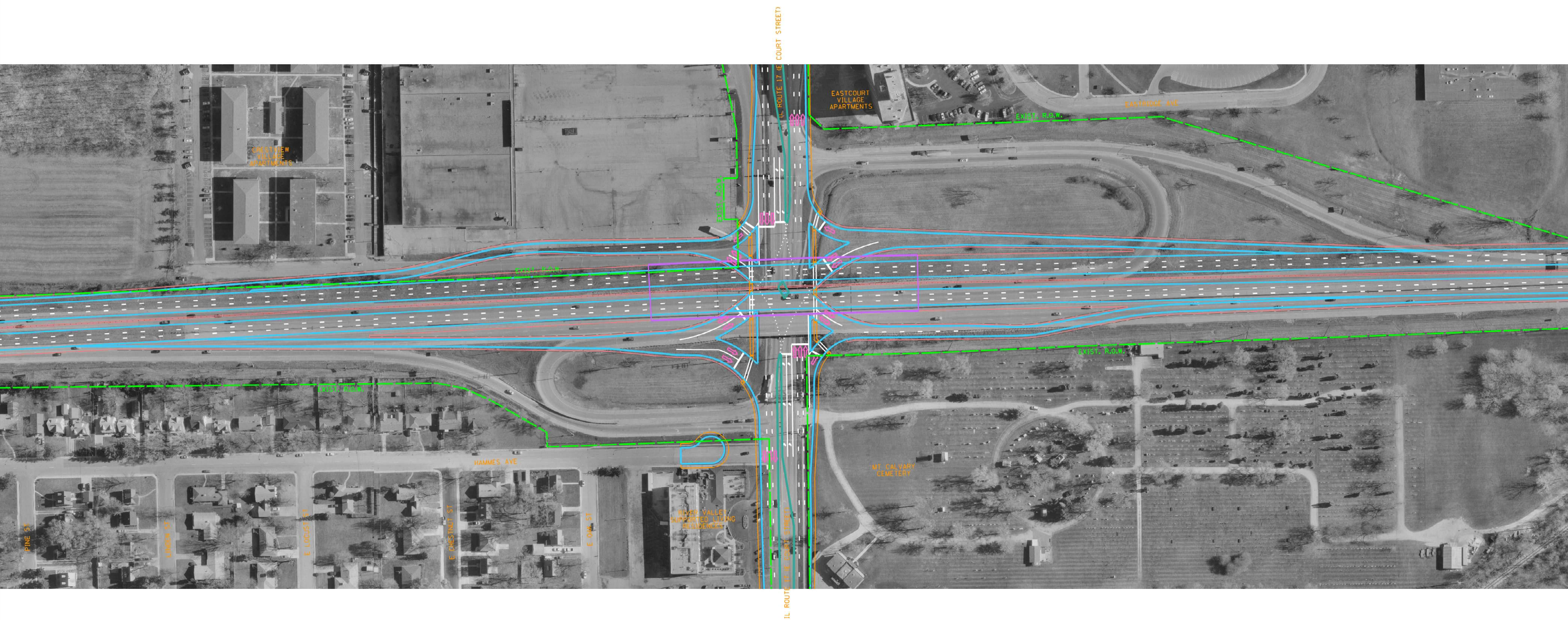
0 50 100  
GRAPHIC SCALE



# INTERCHANGE TYPE STUDY

## RECOMMENDED ALTERNATIVE

### SINGLE POINT URBAN INTERCHANGE (I-57 SHIFTED EAST)



LEGEND:

- EXISTING RIGHT-OF-WAY
- PRELIMINARY PROPOSED RIGHT-OF-WAY

THIS SINGLE POINT URBAN INTERCHANGE WAS RECOMMENDED BECAUSE:

- MINIMIZES RIGHT-OF-WAY IMPACTS
- EASIER TO CONSTRUCT
- IMPROVES TRAFFIC FLOW
- REASONABLE COST WHEN COMPARED TO OTHER ALTERNATIVES

NOTE: THE POTENTIAL PROPOSED ELEMENTS OF THIS EXHIBIT ARE PRELIMINARY AND WILL CONTINUE TO BE REFINED AS THE STUDY CONTINUES.

