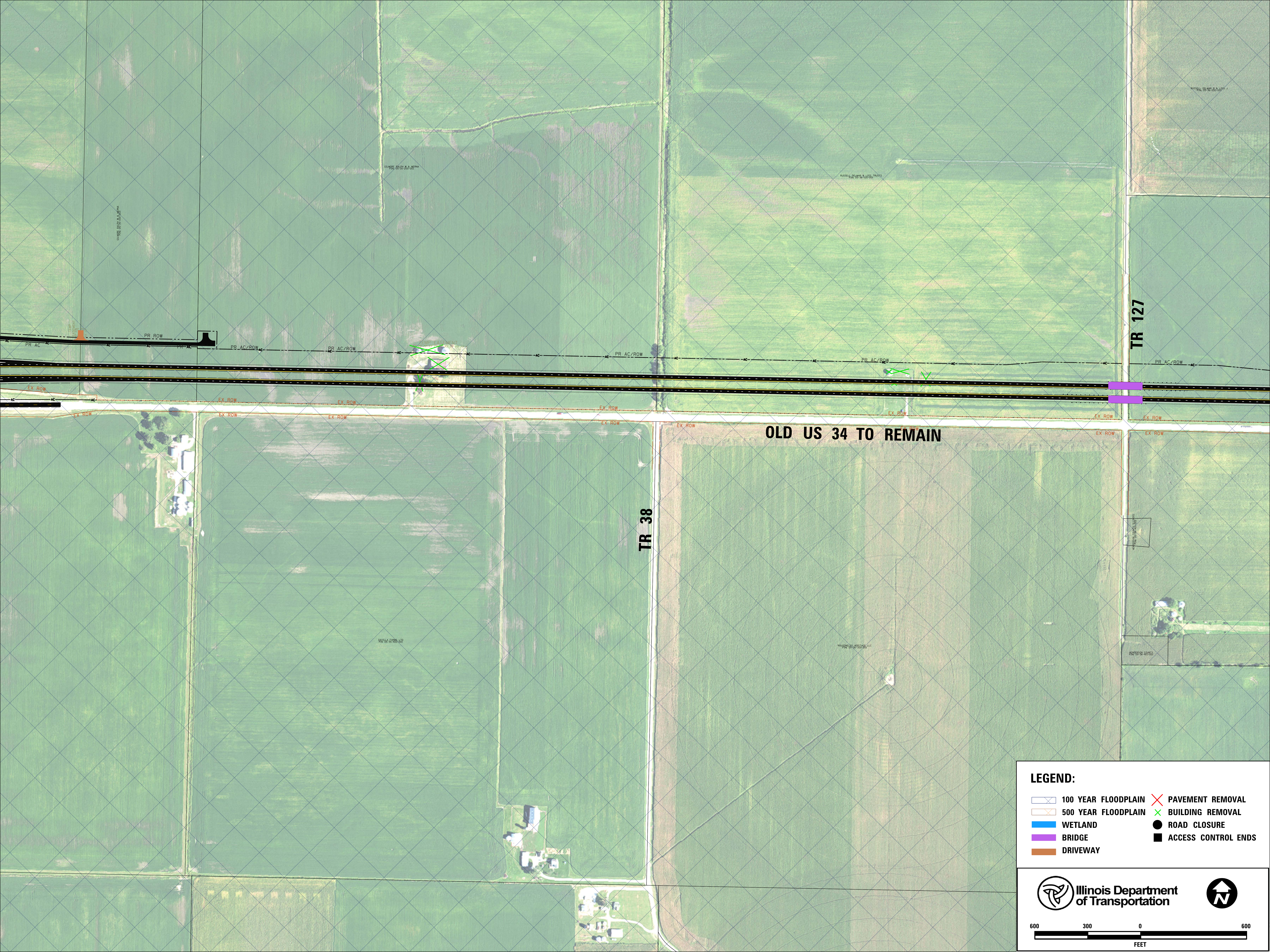


LEGEND:










	100 YEAR FLOODPLAIN		PAVEMENT REMOVAL
	500 YEAR FLOODPLAIN		BUILDING REMOVAL
	WETLAND		ROAD CLOSURE
	BRIDGE		ACCESS CONTROL ENDS
	DRIVEWAY		


Illinois Department of Transportation

600 300 0 600
FEET




LEGEND:

	100 YEAR FLOODPLAIN		PAVEMENT REMOVAL
	500 YEAR FLOODPLAIN		BUILDING REMOVAL
	WETLAND		ROAD CLOSURE
	BRIDGE		ACCESS CONTROL ENDS
	DRIVEWAY		

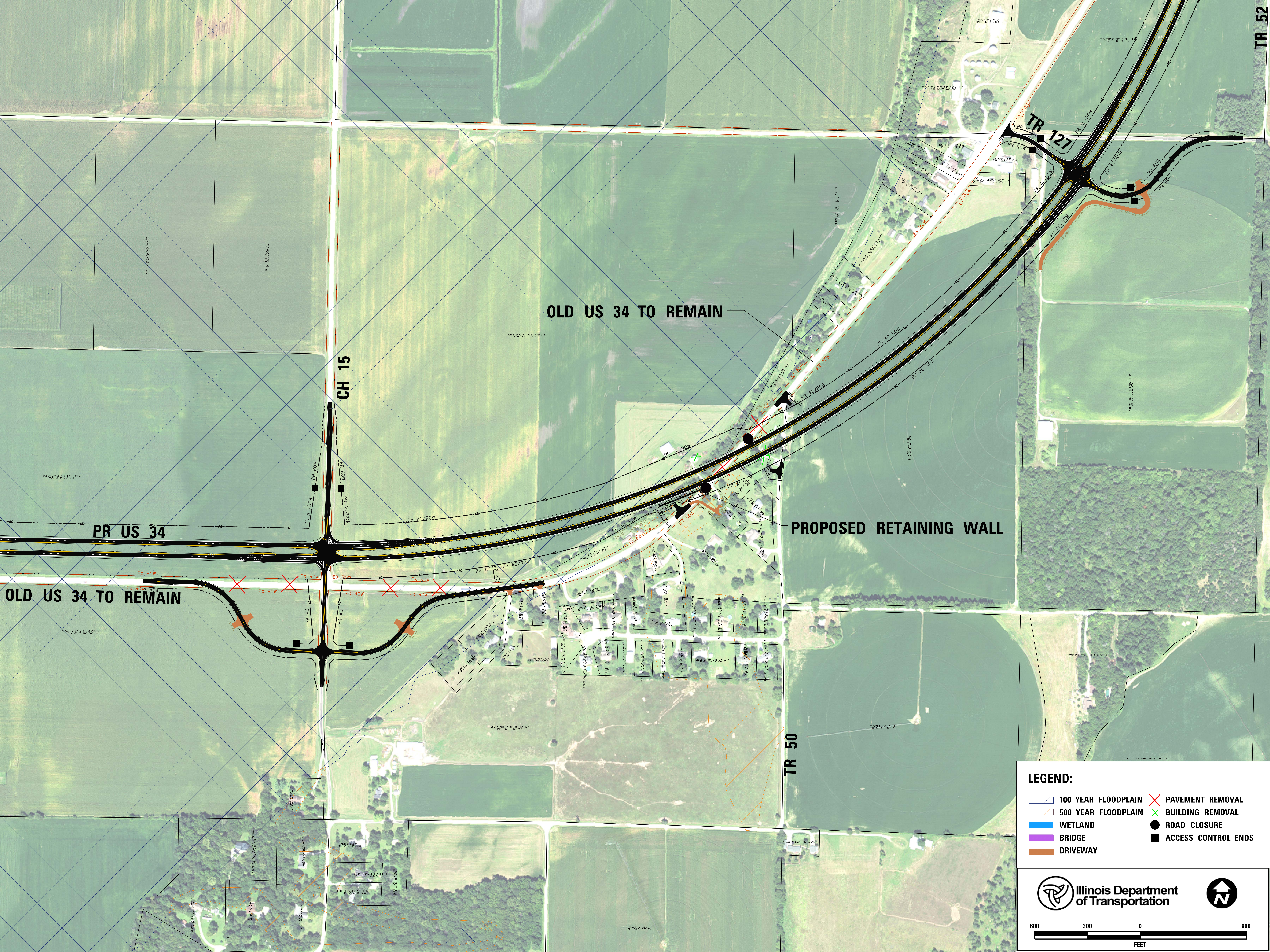


Illinois Department
of Transportation



600 300 0 600

FEET



OLD US 34 TO REMAIN

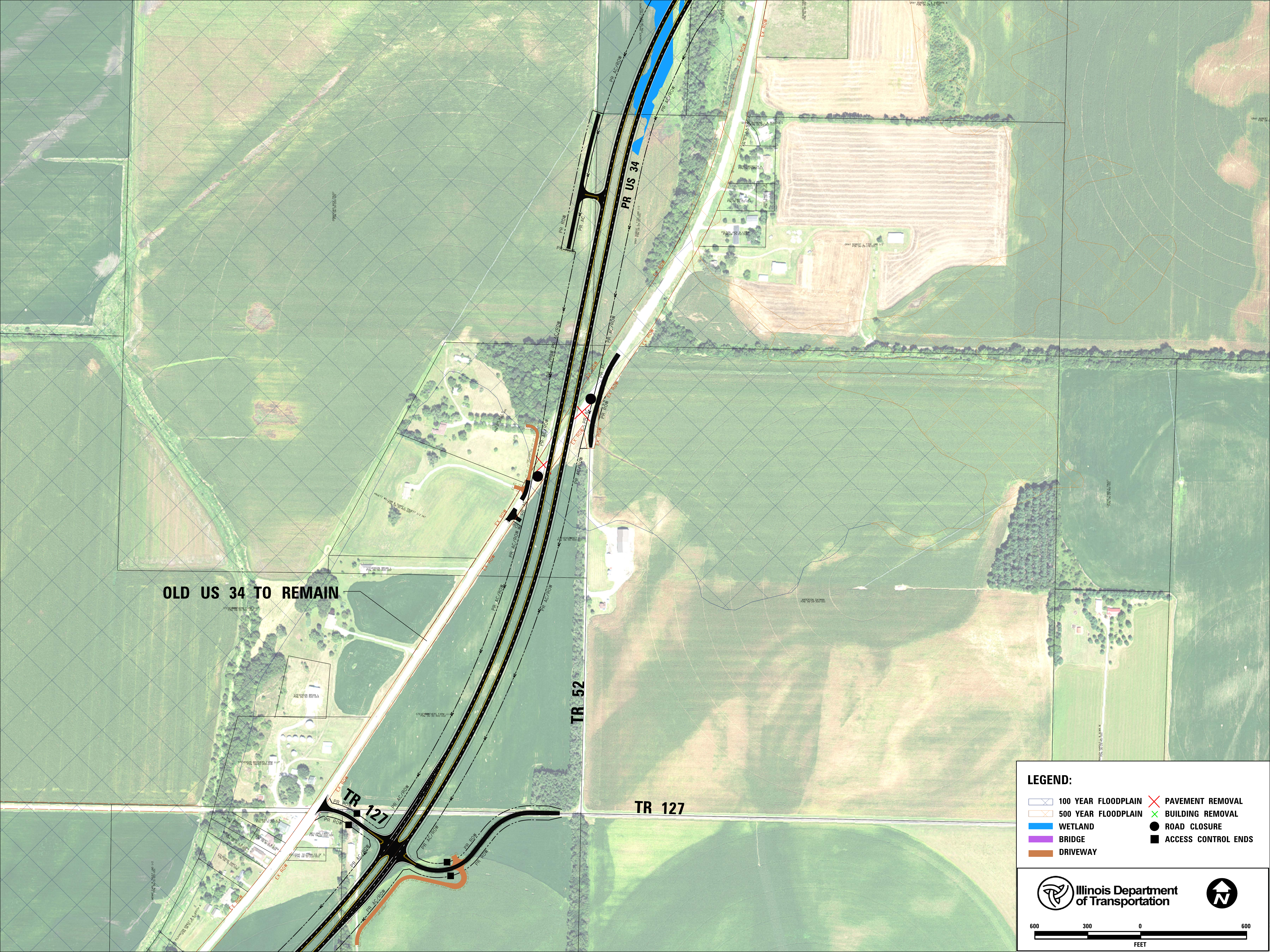
PROPOSED RETAINING WALL

LEGEND:

	100 YEAR FLOODPLAIN		PAVEMENT REMOVAL
	500 YEAR FLOODPLAIN		BUILDING REMOVAL
	WETLAND		ROAD CLOSURE
	BRIDGE		ACCESS CONTROL ENDS
	DRIVEWAY		

Illinois Department of Transportation

600 300 0 600
FEET




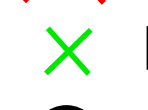

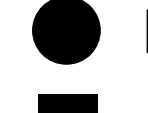







OLD US 34 TO REMAIN

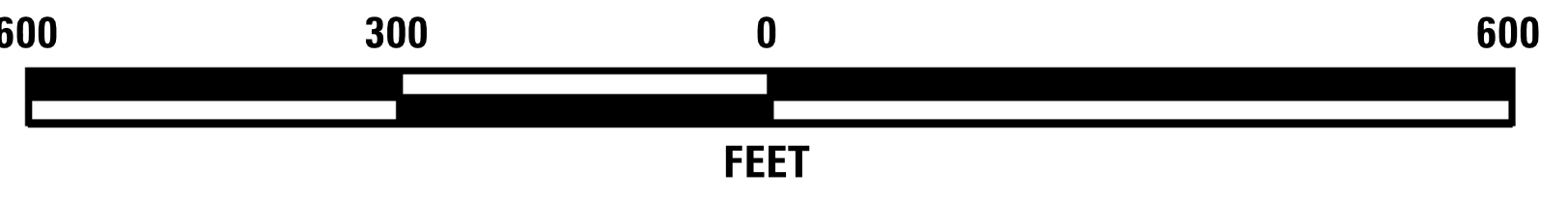
TR 52

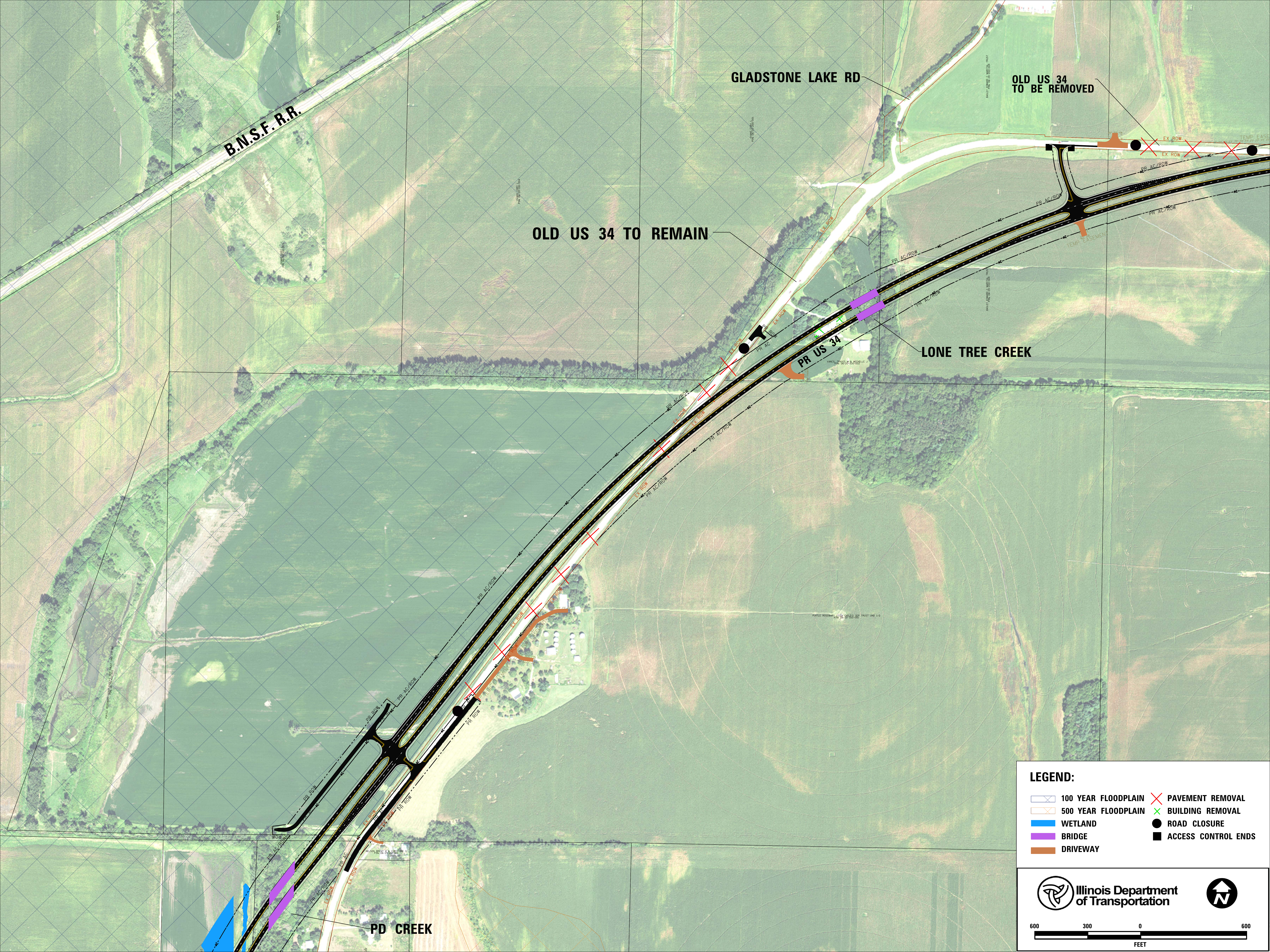
TR 127

LEGEND:

- | | | | |
|---|---------------------|---|---------------------|
|  | 100 YEAR FLOODPLAIN |  | PAVEMENT REMOVAL |
|  | 500 YEAR FLOODPLAIN |  | BUILDING REMOVAL |
|  | WETLAND |  | ROAD CLOSURE |
|  | BRIDGE |  | ACCESS CONTROL ENDS |
|  | DRIVEWAY | | |









LEGEND:

	100 YEAR FLOODPLAIN		PAVEMENT REMOVAL
	500 YEAR FLOODPLAIN		BUILDING REMOVAL
	WETLAND		ROAD CLOSURE
	BRIDGE		ACCESS CONTROL ENDS
	DRIVEWAY		

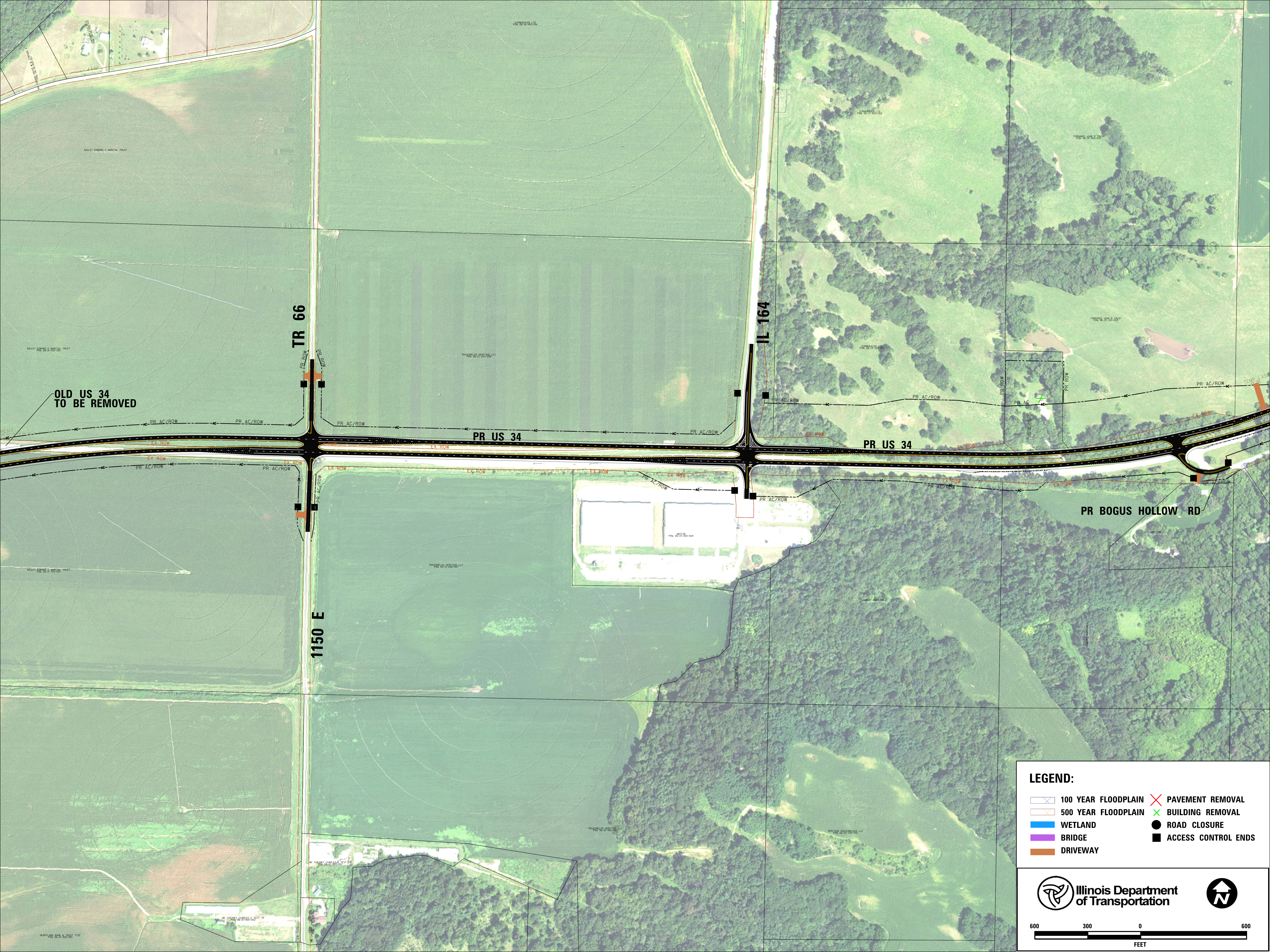


Illinois Department
of Transportation



6003000600

FEET



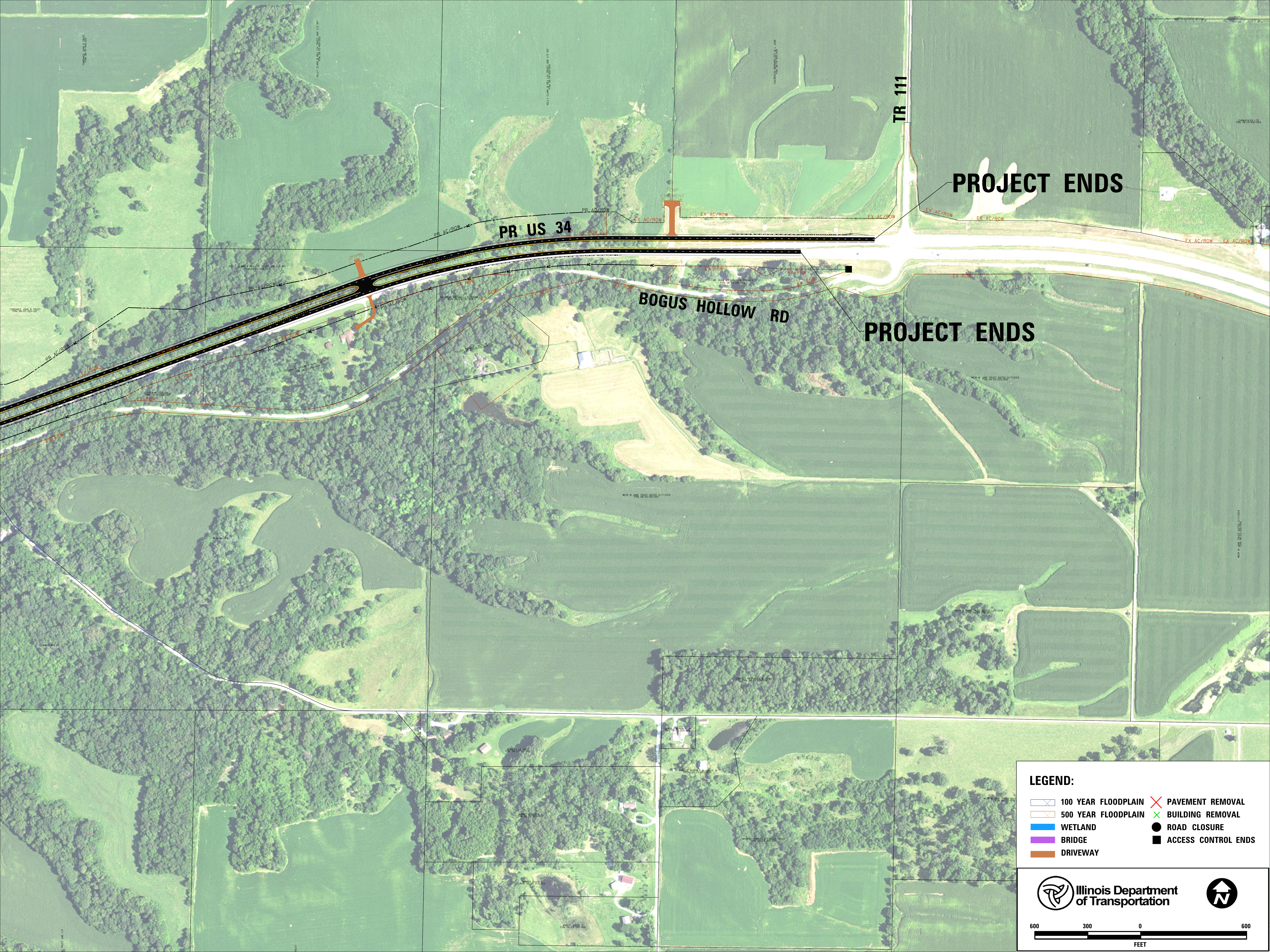
LEGEND:

	100 YEAR FLOODPLAIN		PAVEMENT REMOVAL
	500 YEAR FLOODPLAIN		BUILDING REMOVAL
	WETLAND		ROAD CLOSURE
	BRIDGE		ACCESS CONTROL ENDS
	DRIVEWAY		

Illinois Department of Transportation

600 300 0 600

FEET



PR US 34

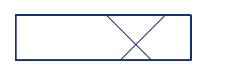

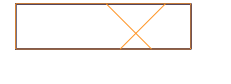






BOGUS HOLLOW RD

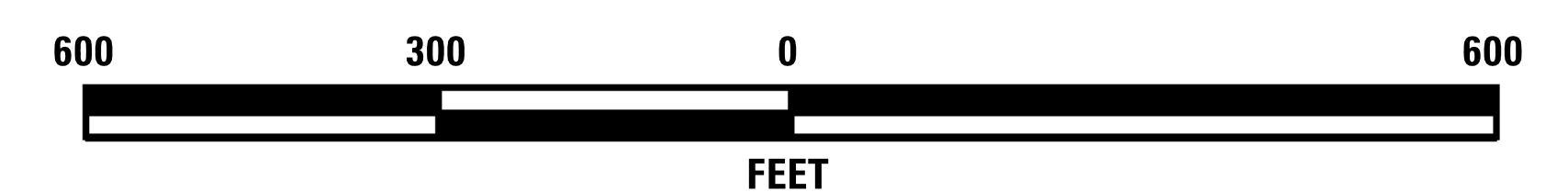
TR 111

PROJECT ENDS

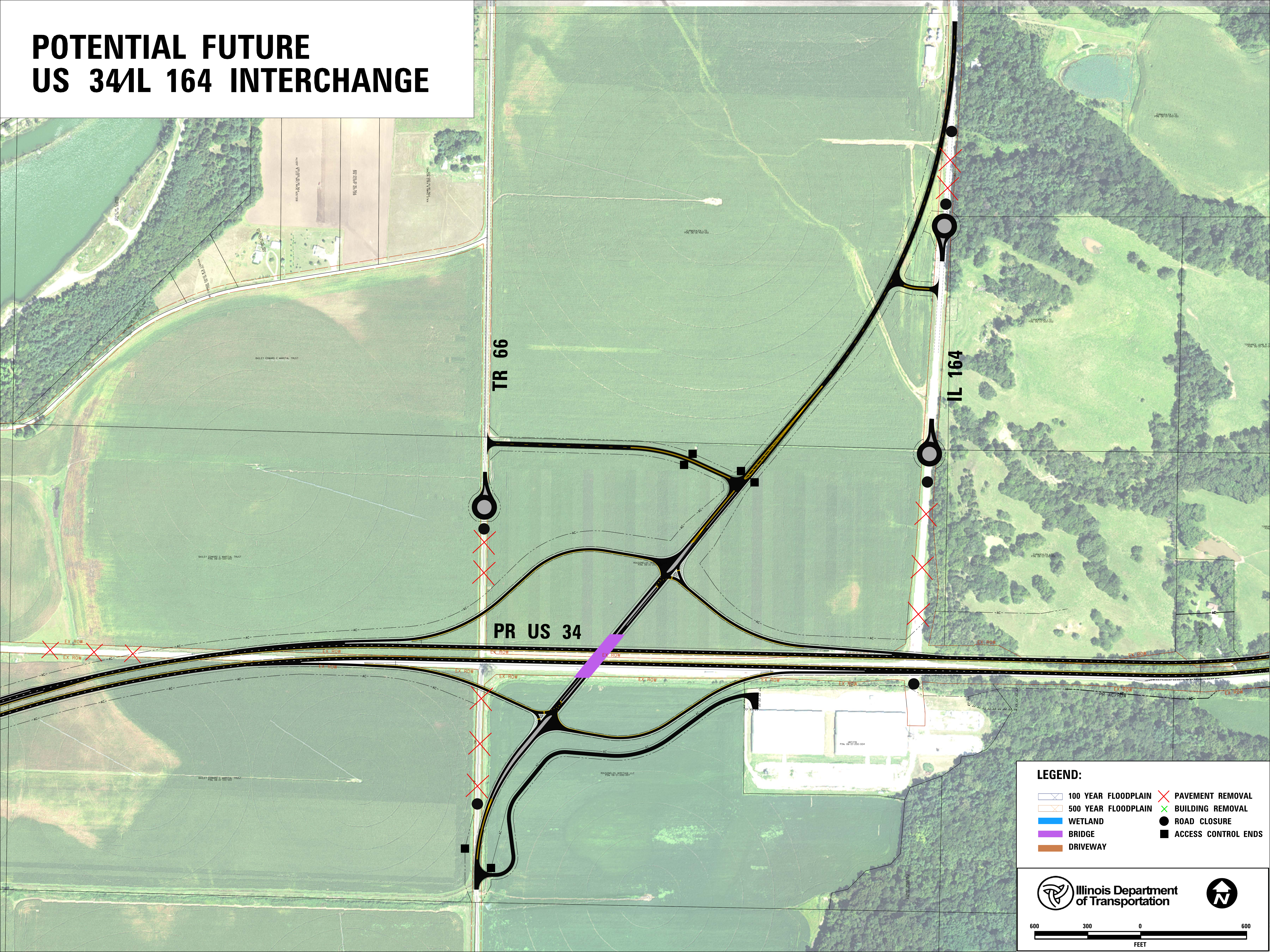
PROJECT ENDS

LEGEND:

- | | |
|---|---|
|  100 YEAR FLOODPLAIN |  PAVEMENT REMOVAL |
|  500 YEAR FLOODPLAIN |  BUILDING REMOVAL |
|  WETLAND |  ROAD CLOSURE |
|  BRIDGE |  ACCESS CONTROL ENDS |
|  DRIVEWAY | |



POTENTIAL FUTURE US 34/IL 164 INTERCHANGE



LEGEND:

- | | | | |
|--|---------------------|--|---------------------|
| | 100 YEAR FLOODPLAIN | | ROAD CLOSURE |
| | 500 YEAR FLOODPLAIN | | ACCESS CONTROL ENDS |
| | WETLAND | | |
| | BRIDGE | | |
| | DRIVEWAY | | |
| | PAVEMENT REMOVAL | | |
| | BUILDING REMOVAL | | |

Illinois Department
of Transportation

