

**Illinois Department of Transportation**

**Planning & Environmental Linkages (PEL)**  
**Study for Old Route (OR) 66**  
**from Chenoa to Pontiac, IL**

**Corridor Advisory Group (CAG)**  
 July 13, 2022  
 Pontiac Recreation Center

[www.idot.illinois.gov/projects/old-route-66-planning-and-environmental-linkages-study.html](http://www.idot.illinois.gov/projects/old-route-66-planning-and-environmental-linkages-study.html)

1

**Introductions**



Illinois Department of Transportation



U.S. Department of Transportation  
Federal Highway Administration



**ENGINEERING**  
RESOURCE ASSOCIATES



**Kaskaskia**  
Engineering Group, LLC

[www.idot.illinois.gov/projects/old-route-66-planning-and-environmental-linkages-study.html](http://www.idot.illinois.gov/projects/old-route-66-planning-and-environmental-linkages-study.html)

2

**Meeting Purpose**

- ▶ Introduce the OR 66 PEL Study to the Corridor Advisory Group (CAG).
- ▶ Discuss the purpose of the CAG and participants' role in the OR 66 PEL Study.
- ▶ Identify and discuss existing transportation, economic, and community issues and needs in the study corridor.
- ▶ Document existing conditions in the study corridor, including characteristics and features of the local community that are valuable to residents, businesses, and stakeholders.

[www.idot.illinois.gov/projects/old-route-66-planning-and-environmental-linkages-study.html](http://www.idot.illinois.gov/projects/old-route-66-planning-and-environmental-linkages-study.html)

3

**Agenda**

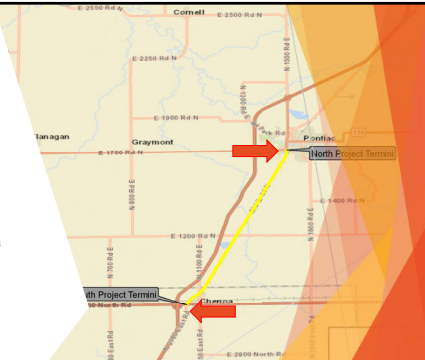
- ▶ Study Overview
- ▶ PEL CAG
- ▶ Project Specifics
- ▶ Purpose and Need
- ▶ Questions and Closing Remarks

[www.idot.illinois.gov/projects/old-route-66-planning-and-environmental-linkages-study.html](http://www.idot.illinois.gov/projects/old-route-66-planning-and-environmental-linkages-study.html)

4

**Study Overview**

- ▶ 10.3-Mile Corridor
- ▶ Southern Terminus: US 24 in Chenoa, McClean County, IL
- ▶ Northern Terminus: IL 116 in Pontiac, Livingston County, IL
- ▶ The Study Area includes four lanes of OR 66 separated by a 30-foot vegetated center median, two northbound and two southbound.




5

**What is a Community Advisory Group (CAG)?**

- ▶ A group of voluntary stakeholders chosen to represent the community and functions as a liaison between the Illinois Department of Transportation (IDOT) and the general public.

A CAG works with IDOT to:

- ▶ Identify stakeholder interests & values
- ▶ Develop improvement options
- ▶ Evaluate the potential effects of those options on community resources



[www.idot.illinois.gov/projects/old-route-66-planning-and-environmental-linkages-study.html](http://www.idot.illinois.gov/projects/old-route-66-planning-and-environmental-linkages-study.html)

6

## CAG Ground Rules

- ▶ Stakeholder input is duly considered in order to yield the best solutions to problems identified by the process.
- ▶ Input from all participants in the process is valued and considered.
- ▶ All participants must keep an open mind and participate openly, honestly, and respectfully.
- ▶ All participants should work collaboratively and cooperatively to seek a general understanding of agreement.
- ▶ A general understanding of agreement is "when a majority of the stakeholders agrees on a particular issue, while the remainder of stakeholders agrees its input has been heard and duly considered and that the process as a whole was fair."

[www.idot.illinois.gov/projects/old-route-66-planning-and-environmental-linkages-study.html](http://www.idot.illinois.gov/projects/old-route-66-planning-and-environmental-linkages-study.html)

7

## CAG Ground Rules

- ▶ All participants in the process must treat each other with respect and dignity.
- ▶ The study must progress at a reasonable pace, based on the schedule.
- ▶ IDOT and FHWA will serve as the lead agencies and make final study decisions.
- ▶ Meetings will be documented, and meeting summaries will be made available to the public.
- ▶ Participants should express their ideas, feelings, and concerns so that the group can consider them during the study.
- ▶ Participants should support the guidance provided by the CAG facilitator.

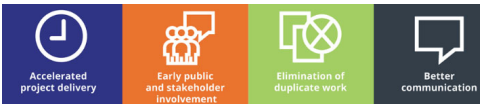
[www.idot.illinois.gov/projects/old-route-66-planning-and-environmental-linkages-study.html](http://www.idot.illinois.gov/projects/old-route-66-planning-and-environmental-linkages-study.html)

8

## What is a PEL?

A PEL (Planning and Environmental Linkage) is a collaborative approach involving local and State DOTs, Federal agencies, and resource agencies that links transportation planning to the environmental review process while considering environmental, community, and economic goals early in the process.

## Why use a PEL?



[www.idot.illinois.gov/projects/old-route-66-planning-and-environmental-linkages-study.html](http://www.idot.illinois.gov/projects/old-route-66-planning-and-environmental-linkages-study.html)

9

## Project Specifics & Existing Conditions

What do we know about OR 66 PEL Study corridor from Chenoa to Pontiac?

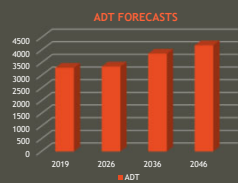
[www.idot.illinois.gov/projects/old-route-66-planning-and-environmental-linkages-study.html](http://www.idot.illinois.gov/projects/old-route-66-planning-and-environmental-linkages-study.html)

10

## Average Daily Traffic (ADT) Volumes

From McLean County Line to Ladd Street Pontiac, Illinois

By 2026 and every 10 years after to 2046, the ADT volumes are expected to increase, as shown below.



11

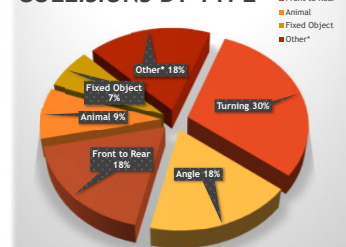
## Vehicle Crashes 2016 - 2020

142 reported crashes

- ▶ 47 resulted in minor injuries
- ▶ 30 resulted in severe injuries
- ▶ 5 resulted in a fatality

The IDOT 2020 Potential for Safety Improvement (PSI) analysis identified critical and other priority level intersections and segments throughout the OR 66 corridor.

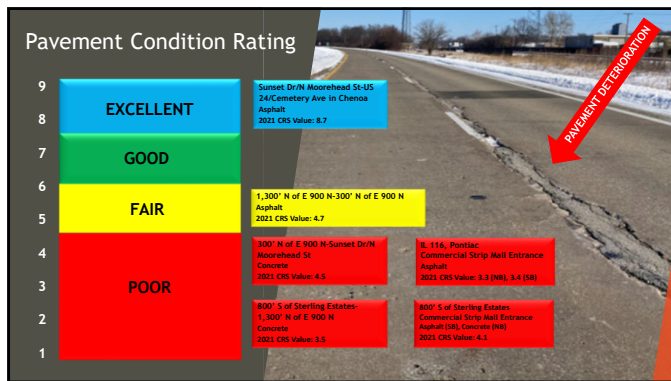
## COLLISIONS BY TYPE



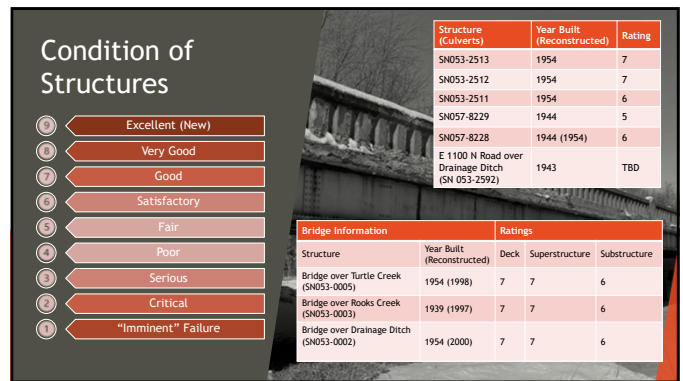
\*Other Includes the following

1. Other Non-Collision
2. Overturned
3. Sideswipe Same Direction
4. Other Object, Pedalcyclist, Sideswipe Opposite Direction, Front to Front, Parked Motor Vehicle

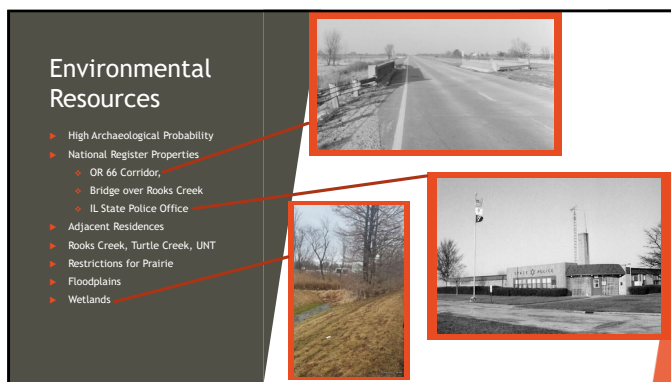
12



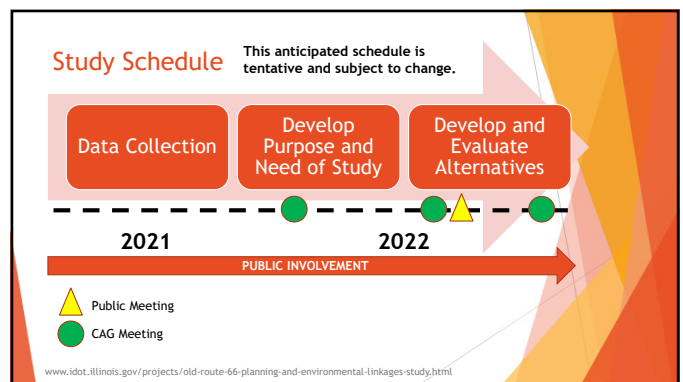
13



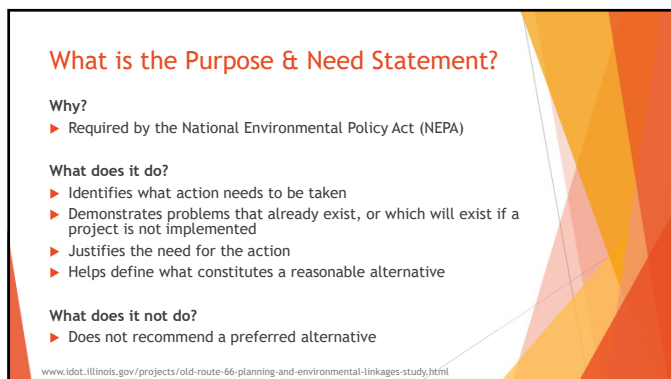
14



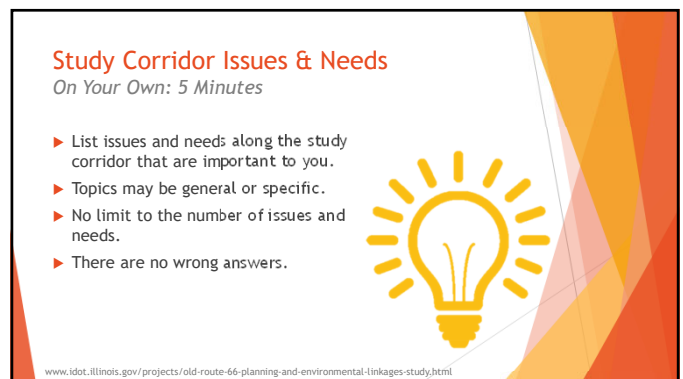
15



16



17




18

## Study Corridor Issues & Needs

*As a Small Group: 20 Minutes*

- ▶ Share your ideas with small group
- ▶ Select 5-7 most prominent issues/needs
- ▶ Document issues/needs on index cards
- ▶ 1 issue/need per index card
- ▶ Choose a representative to present results




www.idot.illinois.gov/projects/old-route-66-planning-and-environmental-linkages-study.html

19

## Study Corridor Issues & Needs

*As a Large Group: 15 Minutes*

- ▶ Each small group reads aloud the top 5-7 issues/needs.
- ▶ The group discusses the comments.
- ▶ Facilitator groups similar issues/needs for review and discussion.



This Photo by Unknown Author is licensed under CC BY-NC-ND

www.idot.illinois.gov/projects/old-route-66-planning-and-environmental-linkages-study.html

20

## Purpose & Need Statement

**Draft Project Need**

*Transportation improvements within the OR 66 Study Area are needed to:*

1. *Improve the functionality of north-south travel, while balancing local mobility needs.*
2. *Increase safety.*
3. *Accommodate tourism demands to maintain the historic context and the economic vitality of the region.*

www.idot.illinois.gov/projects/old-route-66-planning-and-environmental-linkages-study.html

21

## Purpose & Need Statement

**Draft Project Purpose**

*The purpose of the transportation improvements is to preserve a portion of OR 66 as a north-south regional transportation corridor. Improvements will help maintain the historic context of the roadway and enhance the functionality by moving people and goods reliably and safely, while adapting to future travel demands and funding opportunities.*

www.idot.illinois.gov/projects/old-route-66-planning-and-environmental-linkages-study.html

22

## Meeting Summary & Next Steps

- ▶ Summary
- ▶ Upcoming Tasks -
  - Finalize Purpose & Need Statement
  - Develop Various Improvement Alternatives
- ▶ Next CAG Meeting - Early Fall 2022

www.idot.illinois.gov/projects/old-route-66-planning-and-environmental-linkages-study.html

23

# THANK YOU

## Questions?

**PROJECT TEAM CONTACTS:**

**Jacob Oyier, P.E.**  
Acting Location & Environmental Engineer  
IDOT Region 2/District 3  
815.434.8575

**David S. Alexander, P.E.**  
Location & Environmental Studies Engineer  
IDOT District 3  
815-434-8468

www.idot.illinois.gov/projects/old-route-66-planning-and-environmental-linkages-study.html

24