

Illinois Department of Transportation

Planning & Environmental Linkages (PEL)
Study for Old Route (OR) 66
from Chenoa to Pontiac, IL

Corridor Advisory Group (CAG) Meeting #2
March 2, 2023
Pontiac Recreation Center

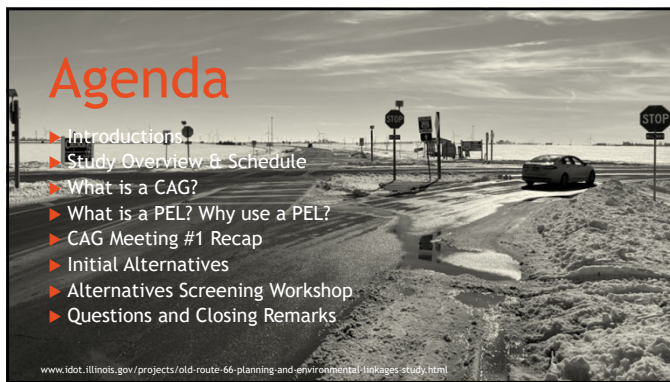
www.idot.illinois.gov/projects/old-route-66-planning-and-environmental-linkages-study.html

1

Agenda

- ▶ Introduction
- ▶ Study Overview & Schedule
- ▶ What is a CAG?
- ▶ What is a PEL? Why use a PEL?
- ▶ CAG Meeting #1 Recap
- ▶ Initial Alternatives
- ▶ Alternatives Screening Workshop
- ▶ Questions and Closing Remarks

www.idot.illinois.gov/projects/old-route-66-planning-and-environmental-linkages-study.html



2

Introductions



Illinois Department of Transportation



**U.S. Department of Transportation
Federal Highway
Administration**



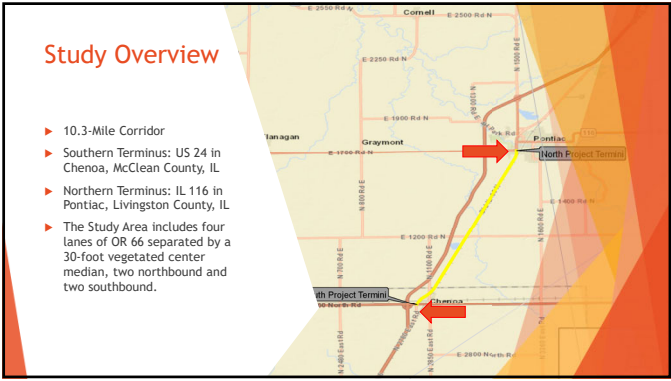
**ENGINEERING
RESOURCE ASSOCIATES**



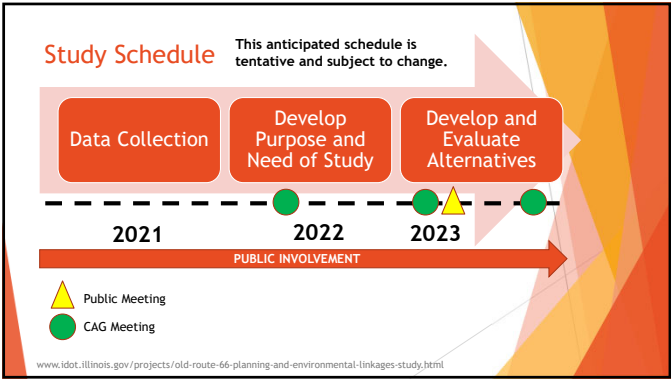
**Kaskaskia
Engineering Group, LLC**

www.idot.illinois.gov/projects/old-route-66-planning-and-environmental-linkages-study.html

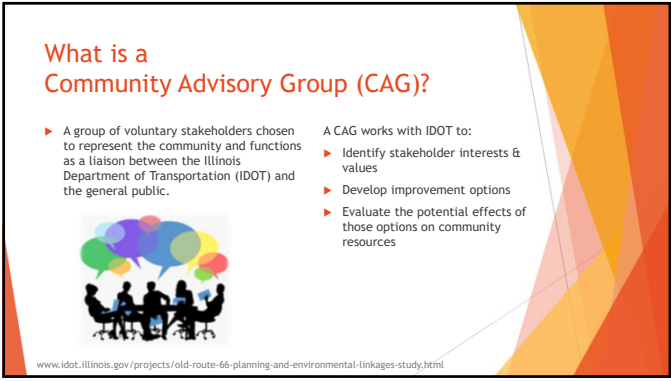
3



4



5




6


What is a PEL?

A PEL (Planning and Environmental Linkage) is a collaborative approach involving local and State DOTs, Federal agencies, and resource agencies that links transportation planning to the environmental review process while considering environmental, community, and economic goals early in the process.


Why use a PEL?




Accelerated project delivery



Early public and stakeholder involvement



Elimination of duplicate work



Better communication

www.idot.illinois.gov/projects/old-route-66-planning-and-environmental-linkages-study.html

7

CAG Meeting #1 Recap

- Reviewed the study corridor's existing conditions.
 - ADT Volumes: By 2026 and every 10 years after to 2046, from McLean County line to Ladd Street, the ADT volumes are expected to increase.
 - The IDOT 2020 Potential for Safety Improvement (PSI) analysis identified critical and other priority level intersections and segments.
 - 2016-2020 included 142 reported crashes, of which 30% were turning-related crashes.
 - Several segments of the pavement throughout the corridor had a fair or poor pavement condition rating.
 - OR 66 corridor listed on the National Register of Historic Places.
- Workshop to discuss corridor's issues and needs.

8

CAG Meeting #1 Recap

Draft Project Need
Transportation improvements within the OR 66 Study Area are needed to:

- Improve the functionality of north-south travel, while balancing local mobility needs.
- Increase safety.
- Accommodate tourism demands to maintain the historic context and the economic vitality of the region.

www.idot.illinois.gov/projects/old-route-66-planning-and-environmental-linkages-study.html

9

3

CAG Meeting #1 Recap

Draft Project Purpose

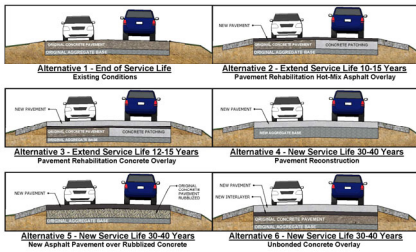
The purpose of the transportation improvements is to preserve a portion of OR 66 as a north-south regional transportation corridor. Improvements will help maintain the historic context of the roadway and enhance the functionality by moving people and goods reliably and safely, while adapting to future travel demands and funding opportunities.

www.idot.illinois.gov/projects/old-route-66-planning-and-environmental-linkages-study.html

10

Initial Alternatives

► Concepts of Potential Alternatives

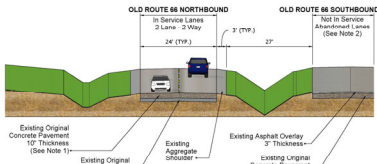


11

Initial Alternatives

► Alternative 1 - No Build (Existing Conditions)

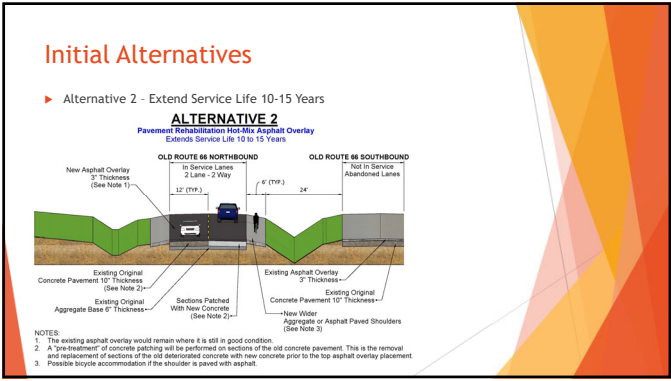
ALTERNATIVE 1 Existing Conditions - No Build End of Service Life



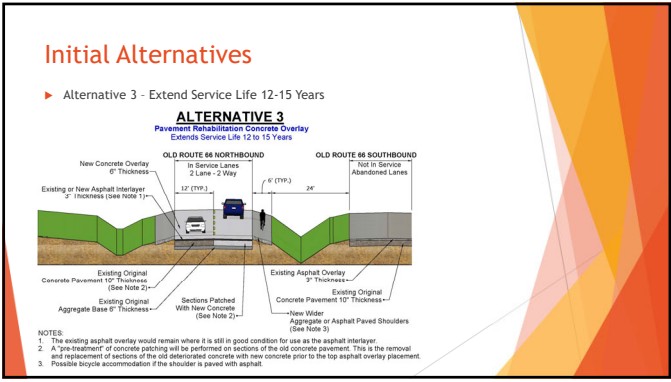
NOTES

1. The existing asphalt overlay is absent through sections of the in-service lanes and the roadway surface is the original concrete pavement.
2. The former southbound lanes are still in-service south of Portluc for 0.63 miles, then two-way traffic shifts onto the former northbound lanes.

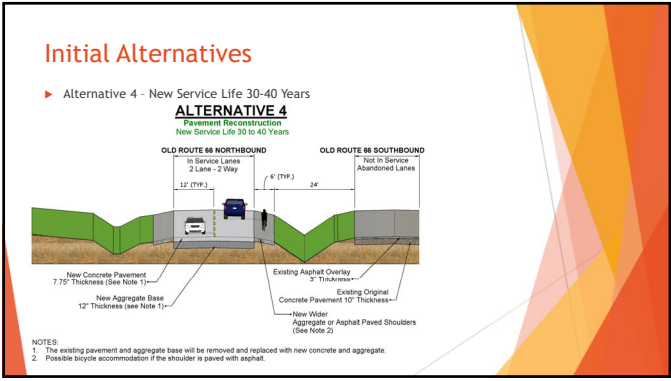
12



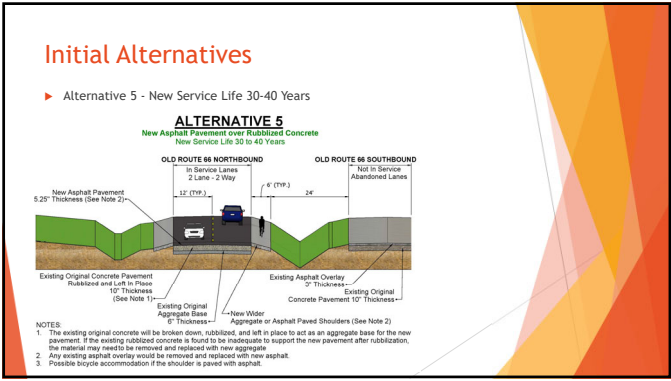
13



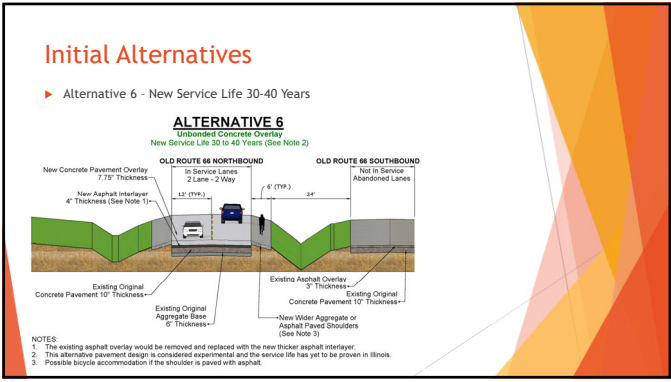
14



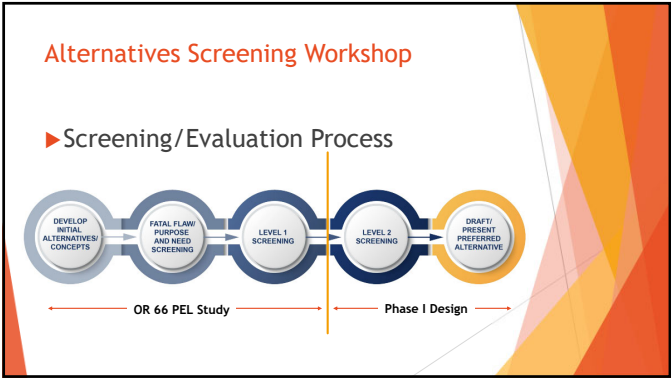
15



16



17



18

Alternatives Screening Workshop

► Brainstorming Session



19

Alternatives Screening Workshop

► Potential Initial (Level 1) Screening Evaluation Criteria

- ❑ Does the alternative support local access and mobility for bicyclists, motorcyclists, and/or local traffic?
- ❑ Does the alternative improve safety within the OR 66 PEL Study Area?
- ❑ Improves pavement and bridge condition ratings within the Study Area to a 7 (good) or greater?
- ❑ Does the alternative maintain the historic context of the Study Area to support economic vitality in the region?

► Responses

- ❑ Yes – Concept meets or has the potential to meet the criteria in question.
- ❑ Neutral – Concept likely would not affect the criteria's question.
- ❑ No – Concept likely would negatively affect the criteria in question.

20

Meeting Summary & Next Steps

► Summary

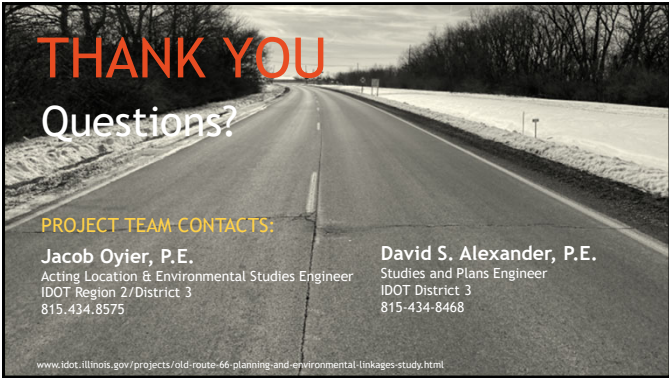
► Upcoming Tasks -

- Screen Initial Alternatives
- Public Meeting
- Draft PEL Study Report

► Next CAG Meeting - Early Fall 2023

www.idot.illinois.gov/projects/old-route-66-planning-and-environmental-linkages-study.html

21



THANK YOU
Questions?

PROJECT TEAM CONTACTS:

Jacob Oyier, P.E. Acting Location & Environmental Studies Engineer IDOT Region 2/District 3 815-434-8575	David S. Alexander, P.E. Studies and Plans Engineer IDOT District 3 815-434-8468
--	--

www.idot.illinois.gov/projects/old-route-66-planning-and-environmental-linkages-study.html
