



# Public Hearing



## IL 100-106 River Crossing Project Florence Bridge - Phase I Study

September 10, 2020

# Agenda

- ▶ Project Update
- ▶ Presentation of Environmental Assessment
- ▶ Next Steps
- ▶ Project Funding



River Crossing Project



# Project Update



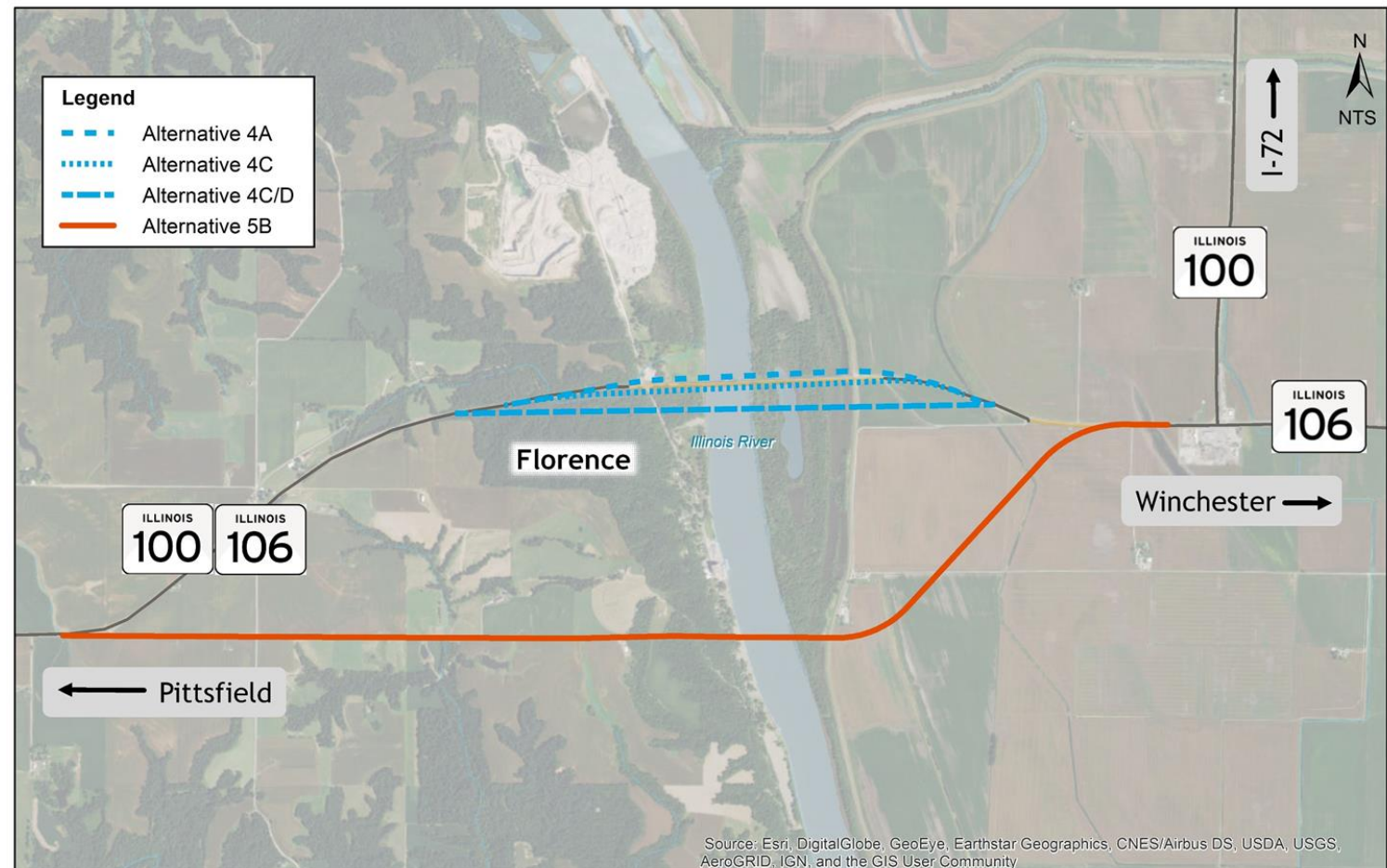
River Crossing Project

# Project Update



River Crossing Project

- ▶ Last public meeting - December 7, 2017
- ▶ Four alternatives proposed to be carried forward
  - ▶ Alt. 4A - 100 feet north of existing
  - ▶ Alt. 4C - 100 feet south of existing
  - ▶ Alt. 4C/D - 300 feet south of existing
  - ▶ Alt. 5B - 4,500 feet south of existing



November 13, 2017

# Project Update



River Crossing Project

- ▶ Preliminary alternatives evaluated for:
  - ▶ Roadway and structure alignment
  - ▶ Environmental resource impacts
  - ▶ Socio-economic impacts to the community
  - ▶ Land acquisition and displacements
  - ▶ Cost
- ▶ Public reviewed alternatives and provided input
- ▶ Considered how well the alternatives:
  - ▶ Satisfy the project purpose?
  - ▶ Meet the project needs?
  - ▶ Minimize impacts to environmental resources

What are  
the Pros &  
Cons?

# Project Update



River Crossing Project

- ▶ Submitted Alt. 4C as the recommended preferred alternative to FHWA - December 2018
- ▶ Received results from a visual archeological survey of Alt. 4C - January 2019
  - ▶ Identified a potential archeological site within the limits of Alt. 4C
- ▶ Alt. 4C put on hold
  - ▶ Coordinated additional archeological investigation
  - ▶ Confirmed an ***unavoidable sensitive resource*** within Alt. 4C ROW
  - ▶ Alt. 4C/D was determined to provide the “most flexibility” in avoiding sensitive resources

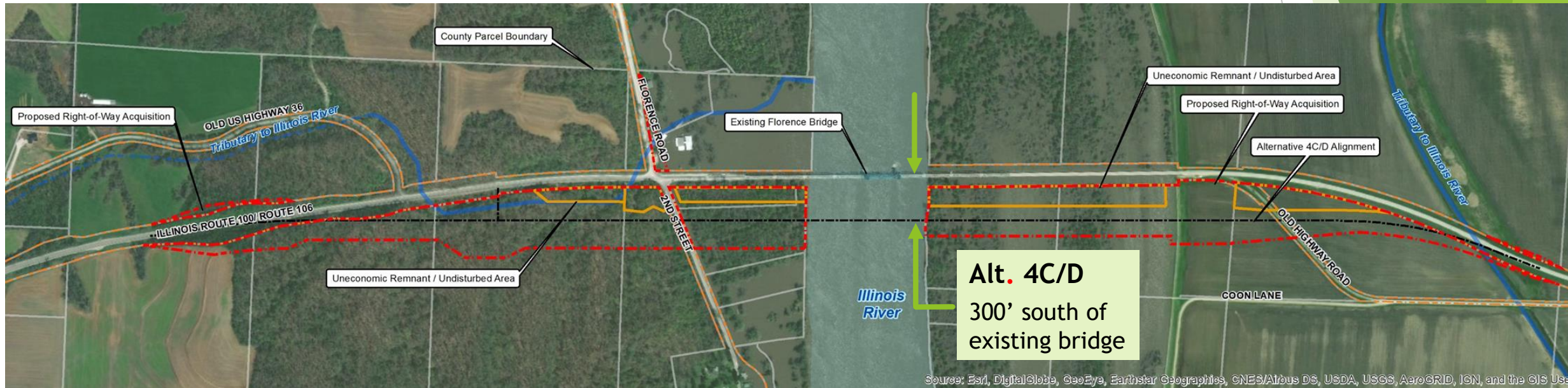


# Project Update



River Crossing Project

- Recommendation changed from Alt. 4C (100' south of existing bridge) to Alt. 4C/D (300' south of existing bridge) in consideration of environmental impacts, engineering, and public involvement



- Environmental Assessment prepared for preferred Alt. 4C/D
  - EA approved by IDOT and FHWA - July 28, 2020



## Presentation of Environmental Assessment (EA)



River Crossing Project

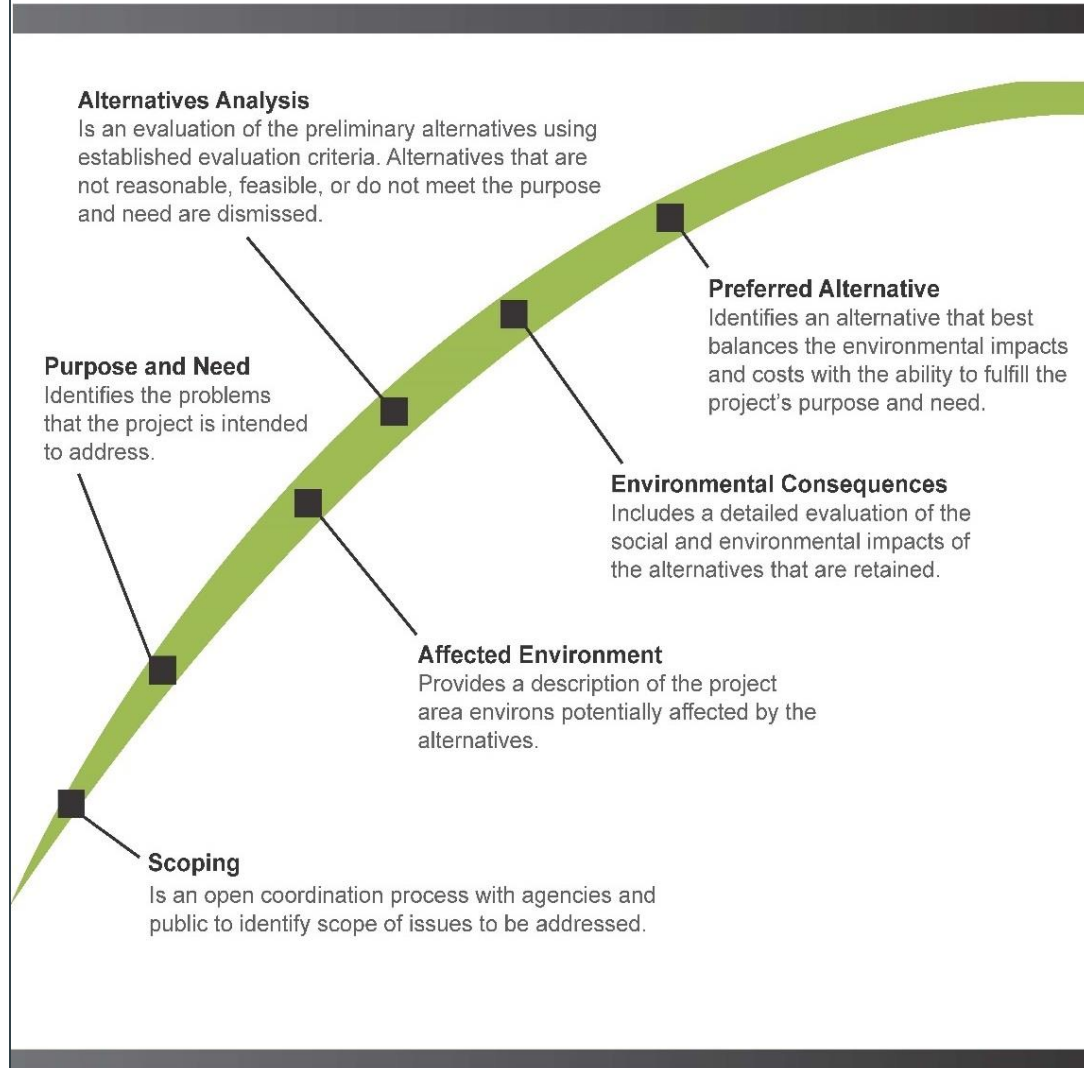


# Environmental Assessment



River Crossing Project

## ENVIRONMENTAL ASSESSMENT KEY COMPONENTS



Project follows the **National Environmental Policy Act (NEPA)** :

- Preparing an inventory of environmental resources in the project study area.
- Avoidance of sensitive resources if reasonably possible.
- Minimizing impacts to resources when unavoidable.
- Mitigation of resources as required.

*The NEPA process ensures that environmental factors are weighted equally when compared to other factors in the decision making process.*

# Organization of the EA



## ► Four sections

### ► Purpose and need

► *Why is the project needed and what is its purpose?*

### ► Project alternatives

► *What alternatives (including No Build) were considered?*

### ► Environmental resources, impacts and mitigation

► *What are the resources encountered, the impacts of the project on the resources, and how will they be addressed?*

### ► Agency coordination and public involvement

► *How does the project incorporate regulatory requirements and involve the public in decision making?*

# Purpose & Need

- ▶ Serves as the basis for which all alternatives are evaluated.
- ▶ The purpose of the project is to provide safe and reliable connectivity across the Illinois River for all modes of traffic, facilitate improved river navigation, and support local and regional economic needs, while meeting current design standards and minimizing impacts to the environment and surrounding area.
- ▶ The project is needed because the existing IL 100/106 River Bridge is at the end of its useful service life, is increasingly costly to maintain, and its design is inadequate for current highway and river travel.



River Crossing Project

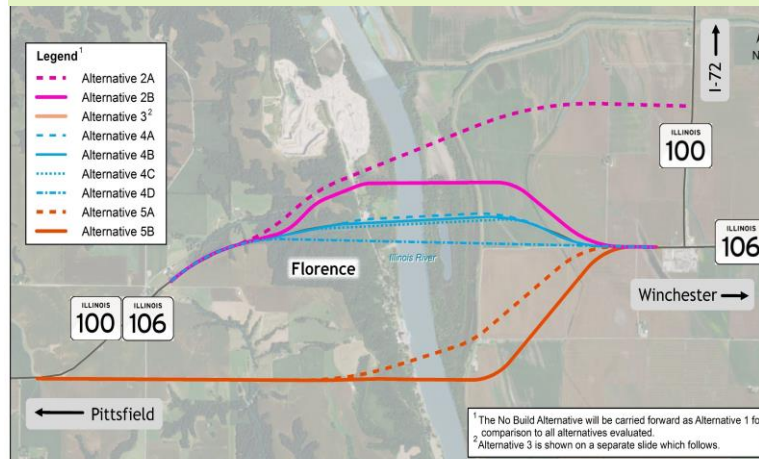
# Project Alternatives

- ▶ Alternatives that preserve the integrity of the historic bridge



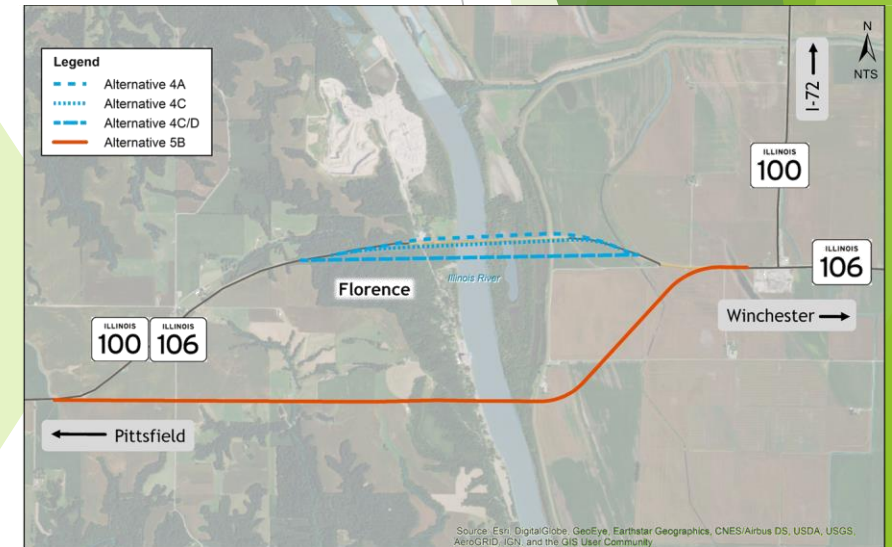
3 alternatives considered that would preserve the bridge, including “no build”

- ▶ Alternatives that removed the historic bridge and replaced with a new bridge



11 additional build alternatives considered that would remove the existing bridge

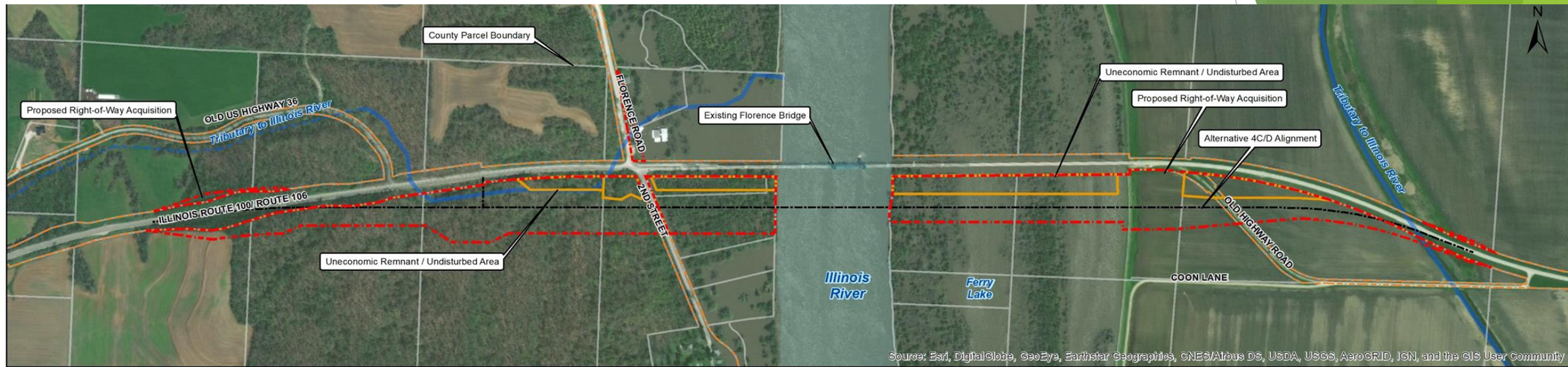
- ▶ Process for selecting Alt. 4C/D as preferred



4 build alternatives carried forward for detailed study



# Preferred Alternative 4C/D



Source: Esri, DigitalGlobe, GeoEye, Earthstar Geographics, CNES/Airbus DS, USDA, USGS, AeroGRID, IGN, and the GIS User Community



## Legend

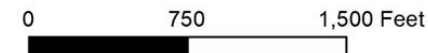
- Proposed Right-of-Way Acquisition
- Uneconomic Remnant / Undisturbed Area
- Existing Right-of-Way
- Alternative 4C/D Alignment
- County Parcel Boundary
- Permanent Stream
- Intermittent Stream

IL 100/106 River Crossing Project  
Florence, Illinois  
Pike and Scott Counties

Disposition of Right-of-Way  
for the Preferred Alternative

Alternative 4C/D

August 26, 2019



- ▶ Right-of-way needed for Construction - 48.6 Acres \*
- ▶ Uneconomic Remnant / Undisturbed Area - 14.9 Acres \*
- ▶ Estimated Construction Cost - \$80.5 million
- ▶ River Bridge length ~ 3,965 feet
- ▶ New roadway length - 1.10 miles

**Total Acquisition  
Area 63.5 Acres**  
\*Preliminary

# Preferred Alternative 4C/D



River Crossing Project

- ▶ Meets the project's purpose and need
- ▶ The only alternative with no impacts found to known sensitive archaeological resources
- ▶ No displacement of residences or businesses
- ▶ Location is better for river navigation than Alt. 4A or 4C
- ▶ The second favorite alternative of Community Advisory Group (CAG) meeting #3, received no strong objection at either CAG #3 or Public Meeting #2.
- ▶ New construction impacts:
  - ▶ Alt. 4C/D has less wetland acreage than Alt. 4A or 4C
  - ▶ Alt. 5B has less wetland impacts than 4C/D but over 60% higher new construction floodplain impacts

# River Crossing Design

- ▶ 60 MPH design speed for IL 100/106
- ▶ 400 ft. navigation span (coordinated with USCG)
  - ▶ *Existing navigation span: 202 ft.*
- ▶ 55-ft. vertical clearance above water surface\*
- ▶ Assumes a plate girder bridge type
- ▶ Bridge Typical Section - 40-foot clear width
  - ▶ Will accommodate farm implements, pedestrian/bicycle use & staging for future rehabilitation

\*2% flow line determined by US Coast Guard



River Crossing Project

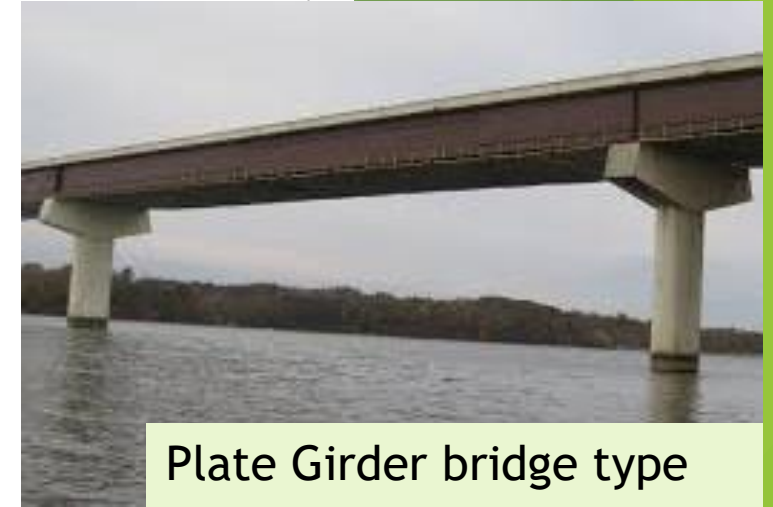
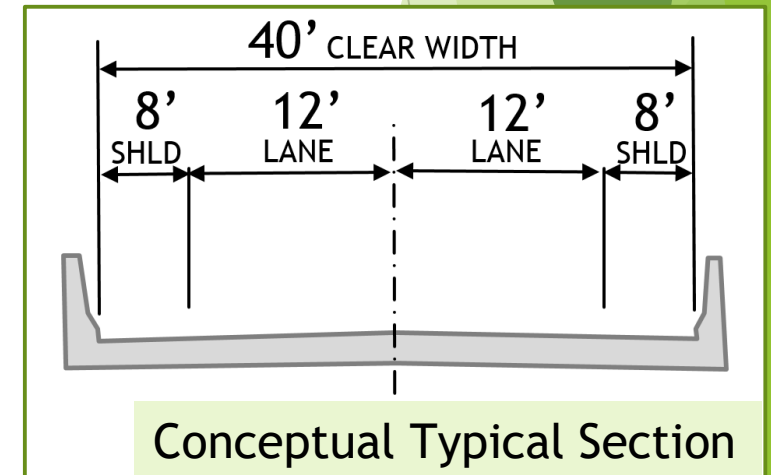


Plate Girder bridge type



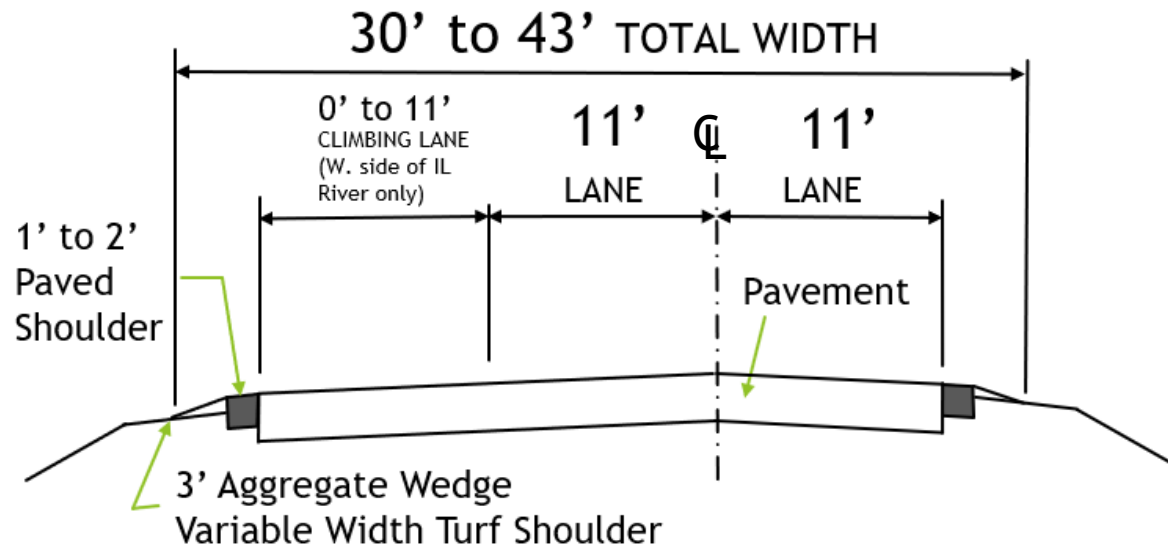
Conceptual Typical Section

# Preferred Alternative Roadway Design

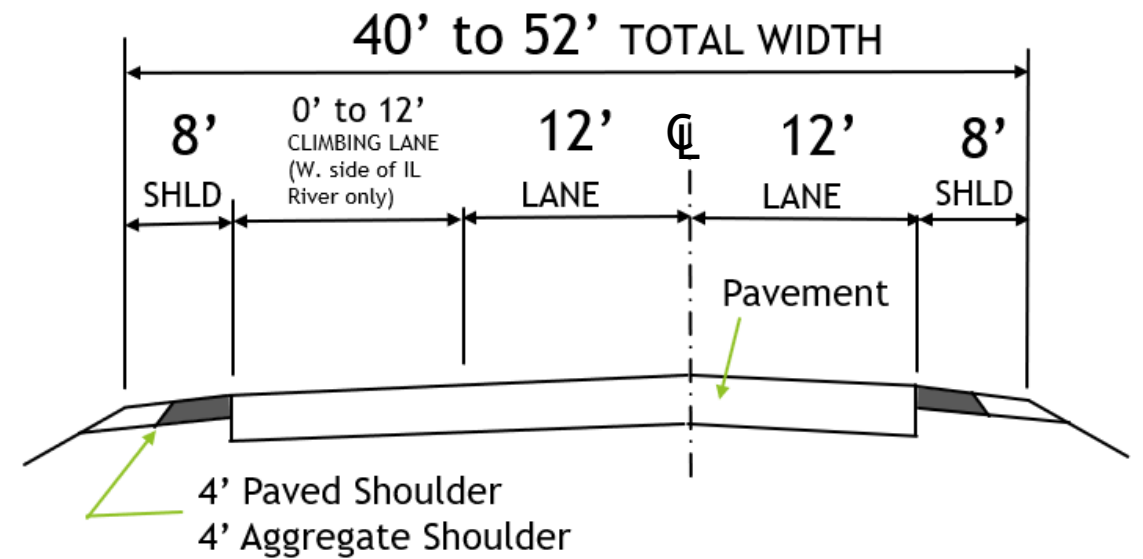


River Crossing Project

## EXISTING



## PROPOSED



Conceptual Typical Sections



# Environmental Resources, Impacts and Mitigation

- ▶ Project footprint inventoried for the presence of environmental resources
- ▶ Impacts to environmental resources evaluated
- ▶ Mitigation measures included that would be implemented consistent with state and federal guidance



# Environmental Impacts and Mitigation



## Agricultural Land

- ▶ 17.4 acres permanently taken out of service; no substantial impact

## Cultural

- ▶ Sensitive archaeological site found; no direct impact
- ▶ Historic Florence Bridge adversely affected

▶ **Mitigation** Offered the bridge to a responsible party for relocation; measures to minimize harm

## Noise

- ▶ Evaluation of existing and proposed traffic noise; did not exceed threshold for noise abatement analysis

▶ **Mitigation** Noise abatement and mitigation policies during construction will be followed

## Natural Resources

- ▶ Mussel survey indicated no threatened or endangered mussel species found near the project

▶ **Mitigation** Mussels from 2017 survey relocated; additional relocation will be performed prior to construction

# Environmental Impacts and Mitigation

## Natural Resources (continued)

- Forest - 51.5 acres impacted by new construction; 5.5 acres impacted by bridge removal

► **Mitigation** Tree replacement per IDOT policy

- 2.24 acres of Decurrent False Aster impacted by new construction and bridge removal

► **Mitigation** Fencing off undisturbed areas during construction; seed collection, storage and re-planting

- Northern long-eared bat and Indiana bat habitat impacted by new construction and bridge demolition

► **Mitigation** No tree clearing April-September; bat survey prior to bridge removal; additional tree removal and replacement specifications to protect bats and provide suitable bat habitat

- No substantial increases in pollutant loads to waters; stream to be relocated west of IL River

► **Mitigation** Coordination with IDNR if blasting is used for bridge removal; wells to be capped and abandoned

- Wetlands - 15.7 acres impacted by new construction, 11.6 acres impacted by bridge removal

► **Mitigation** Mitigation to be provided at the LaGrange wetland bank in Brown County; construction mats and fencing to protect wetlands during construction;

# Environmental Impacts and Mitigation



River Crossing Project

## Hazardous Substances (Recognized Environmental Conditions)

- ▶ Two sites identified; a 1987 river spill and potential asbestos on the existing bridge

**Mitigation** ▶ Avoidance determination to be made and additional remedial actions if necessary during construction

## Parks, Wildlife Areas, Recreational Areas, Special Lands

- ▶ Pike County Boat Launch identified as a site; not impacted by project



# Public Involvement Highlights



River Crossing Project

*Five Community Advisory Group Meetings and two Public Meetings held; key meetings below*

## December 7, 2017 Public Meeting #2

- ▶ No public support for Alt. 5B; adverse impacts to farmland and farm operations cited
- ▶ Most support for Alt. 4C, as well as alternatives other than 5B
- ▶ Comments and concerns: pavement maintenance, flooding, property-specific concerns, drainage/levee district, archaeological impacts

## March 8, 2018 CAG Meeting #3

- ▶ Some support for each alternative as first preference
- ▶ Strongest support for Alt. 4C and 4C/D
- ▶ Comments and concerns: archaeological impacts, loss of tax revenue with Alt. 4A, traffic impact to Florence for 5B, favor local connection of 4C/D, favor shorter bridge of 5B, concern with bridge shutdown during construction, favor adding an I-72 interchange to project

## October 16, 2018 CAG Meeting #4

- ▶ Preliminary recommendation of Preferred Alternative 4C

## August 27, 2019 CAG Meeting #5

- ▶ Recommendation of Preferred Alternative 4C/D

# Historic Bridge Coordination



River Crossing Project

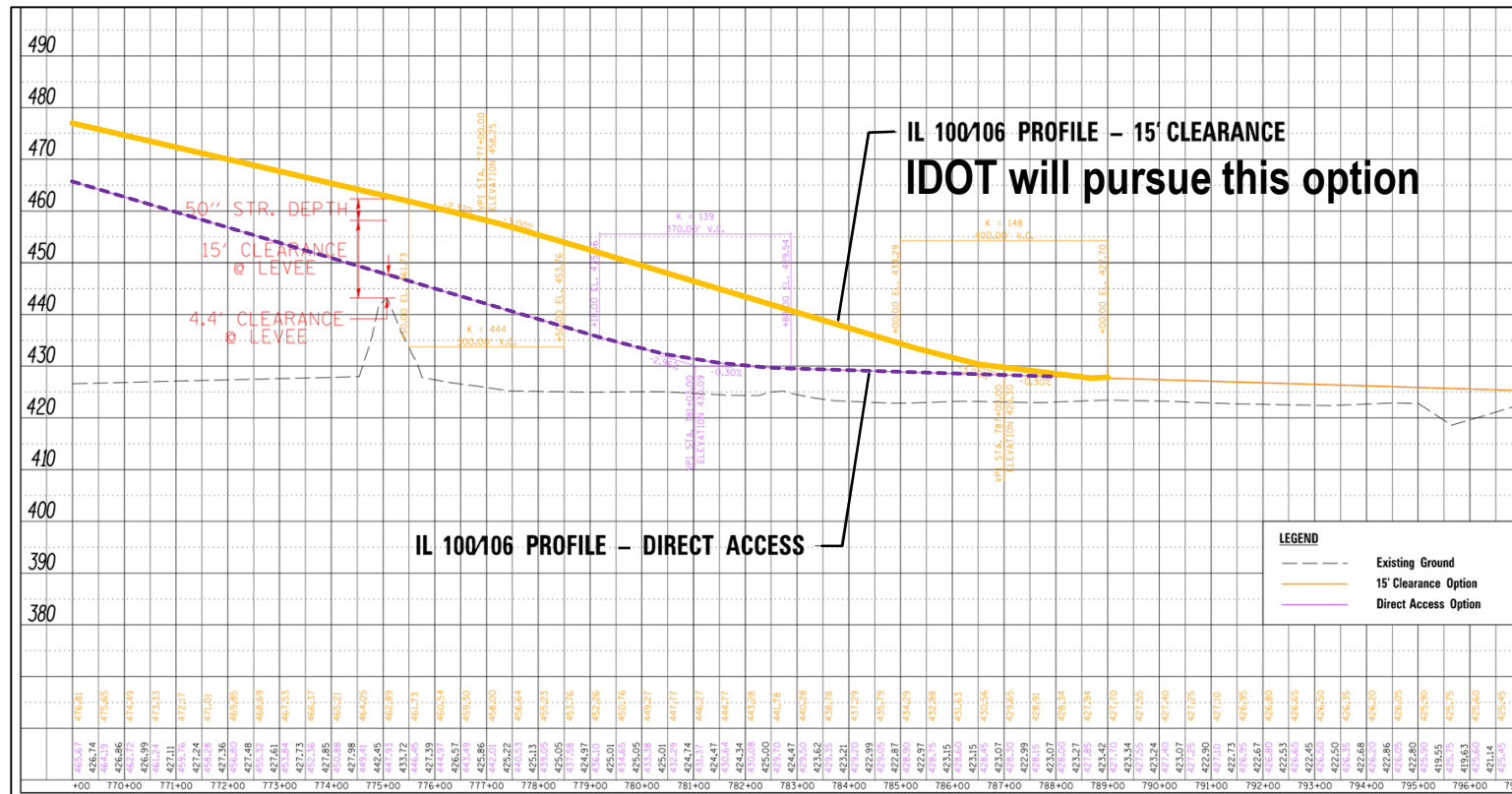
- ▶ Eligible for National Register of Historic Places
- ▶ Complete Section 106/Section 4(f) documentation of Adverse Effect
- ▶ Public Notice for Advertisement
  - ▶ No responses received as of April 15, 2020
  - ▶ Measures to minimize harm include Historic Illinois Engineering Record and video documentation
- ▶ Memorandum of Agreement between IDOT, FHWA and SHPO - *Pending*



# Big Swan Levee & Drainage District (Levee access options)

Roadway profile with levee access options (Alt. 4C/D)

**Preliminary Concept**



## ► 15' Clearance

- 2.3% and 3% approach grades
- Assumes a 50" approach span superstructure depth over the levee

## ► Direct Access

- 3% approach grade
- Mainline roadway approx. 4 feet higher than levee
- Assumes access similar to existing from shoulder

**► IDOT will pursue the 15' clearance option**

# IDNR Coordination



River Crossing Project

## Office of Water Resources Floodway Permit Required

- ▶ Bridge is located in the IL River floodway
  - ▶ Worst-case analysis required
    - ▶ Existing and proposed bridge, temporary causeways in place during construction
- ▶ Bridge opening must avoid making properties more flood-prone





# Other Permitting Requirements



River Crossing Project

- ▶ Section 404 (US Army Corps of Engineers)
  - ▶ Permits dredged fill into Waters of US including wetlands
- ▶ Section 10 (USACE)
  - ▶ Approves construction below Ordinary High Water elevation
- ▶ Section 9 (US Coast Guard)
  - ▶ Approval of location, plans and clearances
- ▶ Section 401 (Illinois EPA)
  - ▶ Water Quality certification
- ▶ Section 402 NPDES (Illinois EPA)
  - ▶ Proper erosion control for discharges that disturb  $\geq 1$  acre



## Next Steps & Project Funding

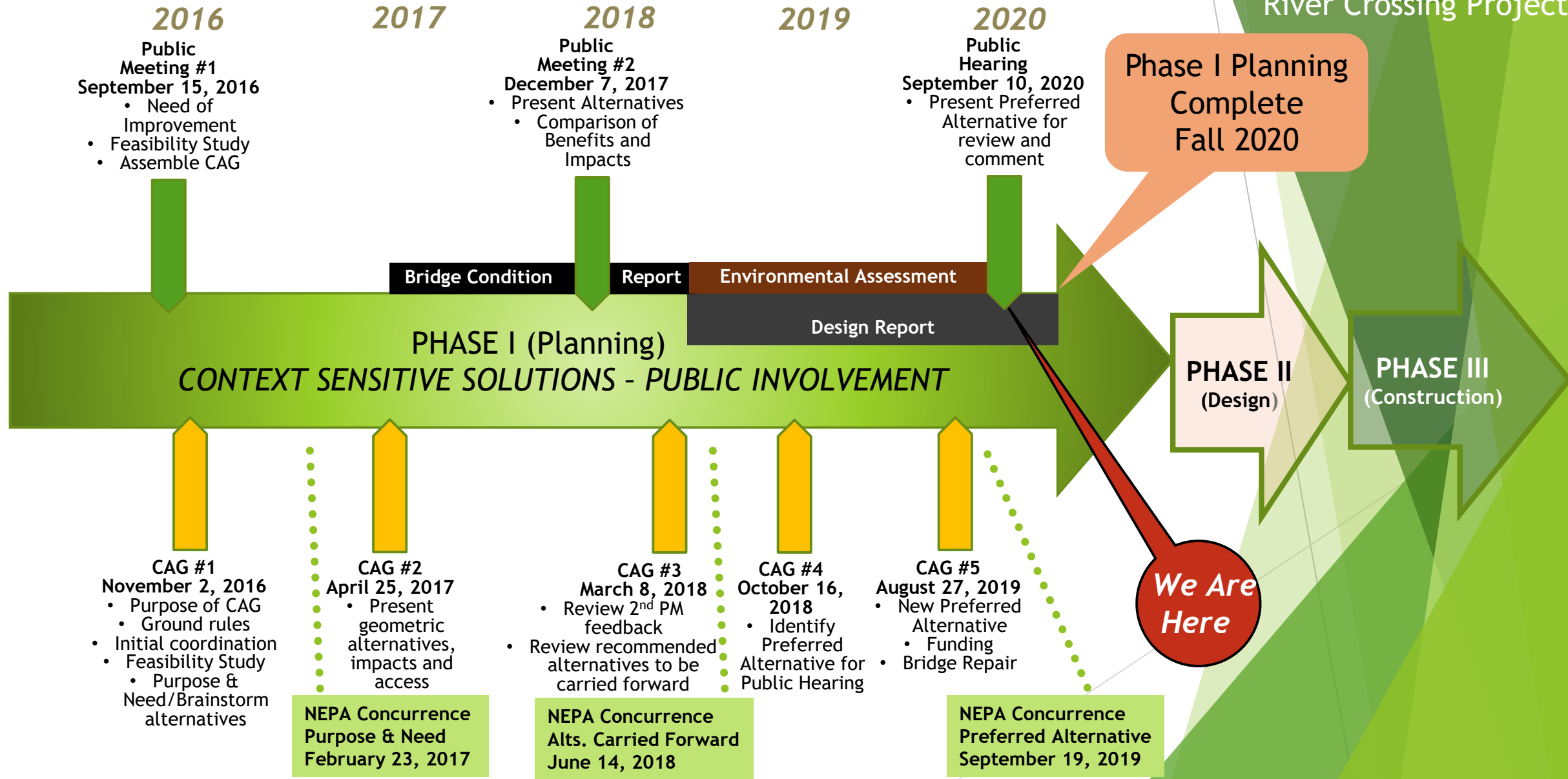


River Crossing Project

# Project Timeline



River Crossing Project



# Next Steps

- ▶ Public comments on EA and Public Hearing due ***Sept. 24, 2020***
- ▶ Consider comments received during public comment period and make revisions - Errata
- ▶ Recommend issuing Finding Of No Significant Impact (FONSI); complete Design Report (fall 2020)
- ▶ Continue environmental coordination
  - ▶ Levee District and State/Federal permit coordination
  - ▶ Pre-construction archaeological survey
- ▶ Complete Phase II design (construction plans and estimates)
- ▶ Complete land acquisition
- ▶ Place on statewide letting for construction



River Crossing Project



# Florence Bridge Replacement Funding



River Crossing Project

- ▶ Florence Bridge replacement included in FY 21-26 Highway Improvement Program
- ▶ Includes:
  - ▶ Engineering (Preliminary & Construction)
  - ▶ Archeology surveys
  - ▶ Land acquisition
  - ▶ Utility relocations
  - ▶ Construction
- ▶ Phase I Study - Scheduled for completion in fall 2020
  - ▶ WSP
- ▶ Phase II Design - To be completed by Parsons

# EA & Public Hearing Comments



River Crossing Project

- ▶ Your written comments are welcome!
- ▶ Comment form included in handout
- ▶ Please submit your comments by ***Sept. 24, 2020*** to:

Mr. Jeffrey Myers, P.E.

Region 4 Engineer

Illinois Department of Transportation

126 East Ash Street

Springfield, Illinois 62704-4792

Attention: Jay M. Wavering, P.E.

Or email to [contact@florencebridgestudy.com](mailto:contact@florencebridgestudy.com)