



WELCOME TO THE **PUBLIC HEARING**

U.S. Route 136 Grade Raise

Tuesday, **November 7th**, 2023

4 - 6PM

Hamilton Community Center



Illinois Department
of Transportation



PURPOSE AND NEED OF PROJECT

- ➔ **Raise roadway to at least 2' above the 1993 flood elevation.**

OTHER PROJECT GOALS

- ➔ **Maintain at least 1-lane of traffic in both directions on US 136 during construction.**
- ➔ **Keep railroad closure to a minimum during construction.**

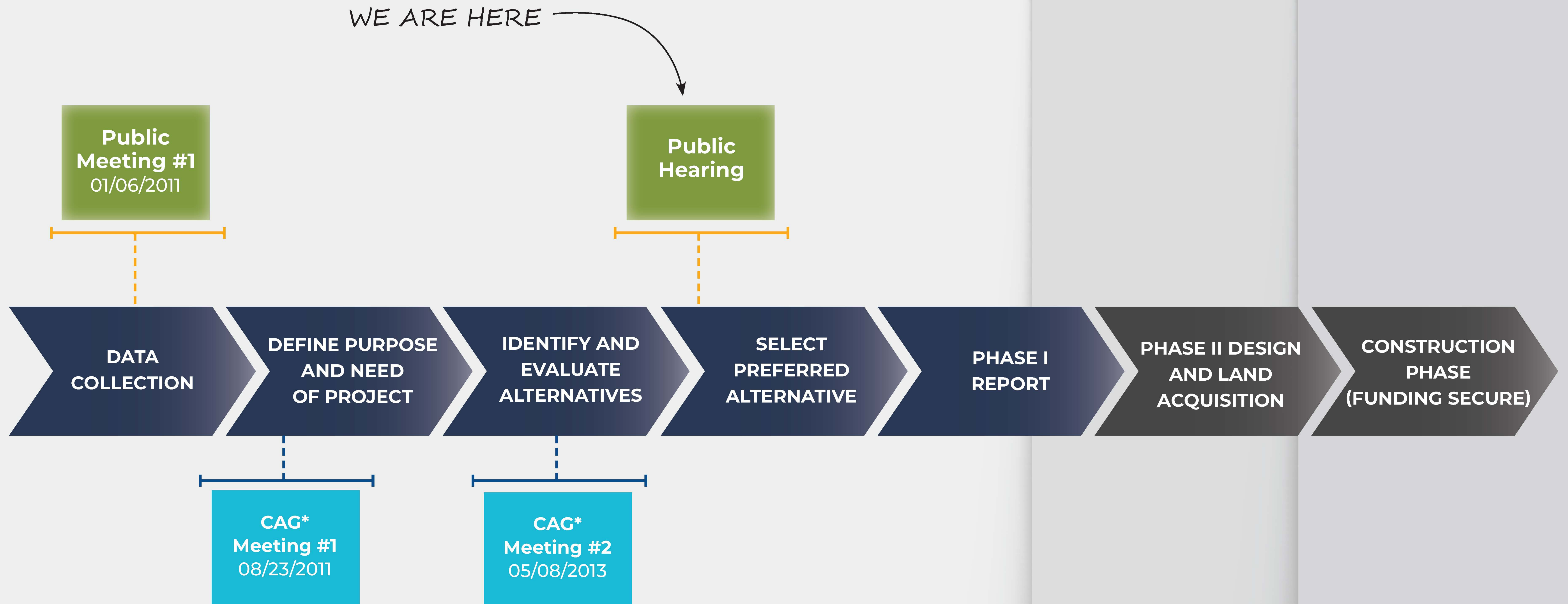
GENERAL FACTS

- **US 136: Average Daily Traffic 11,900 (9% Trucks)**
- **Warsaw Road: Average Daily Traffic 3,100 (11% Trucks)**
- **Railroad: 2 Trains per day (5 MPH)**
- **1993 Flood: 2'-8" Over US 136**
- **2008 Flood: 2'-0" Over US 136**
- **2019 Flood: 8" Over US 136**
- **River Crossing: US 24 at Quincy 35 Miles South (83 Miles adverse travel)**
- **River Crossing: IL 9 at Niota W/R 22 Miles North (49 Miles adverse travel)**
- **River Crossing: US 34 at Gulfport 45 Miles North (87 Miles adverse travel)**

BRIEF HISTORY OF US 136

- 1954** — US 136 built (two 11' Lanes & 10' Shoulders)
- 1959** — New Railroad Creek bridge; Road widened to two 12' Lanes w/ turn lanes & median
- 1983** — US 136 realigned; new Mississippi bridge
- 1993** — US 136 floods 2'-8" over road
- 2008** — US 136 floods 2'-0" over road
- 2019** — US 136 floods 8" over road

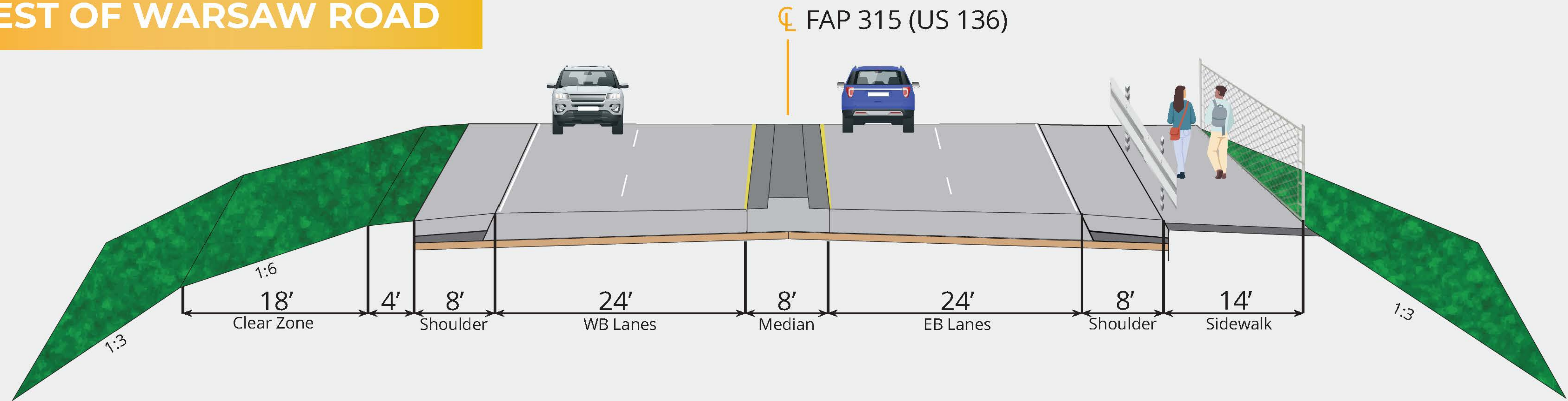
PROJECT TIMELINE



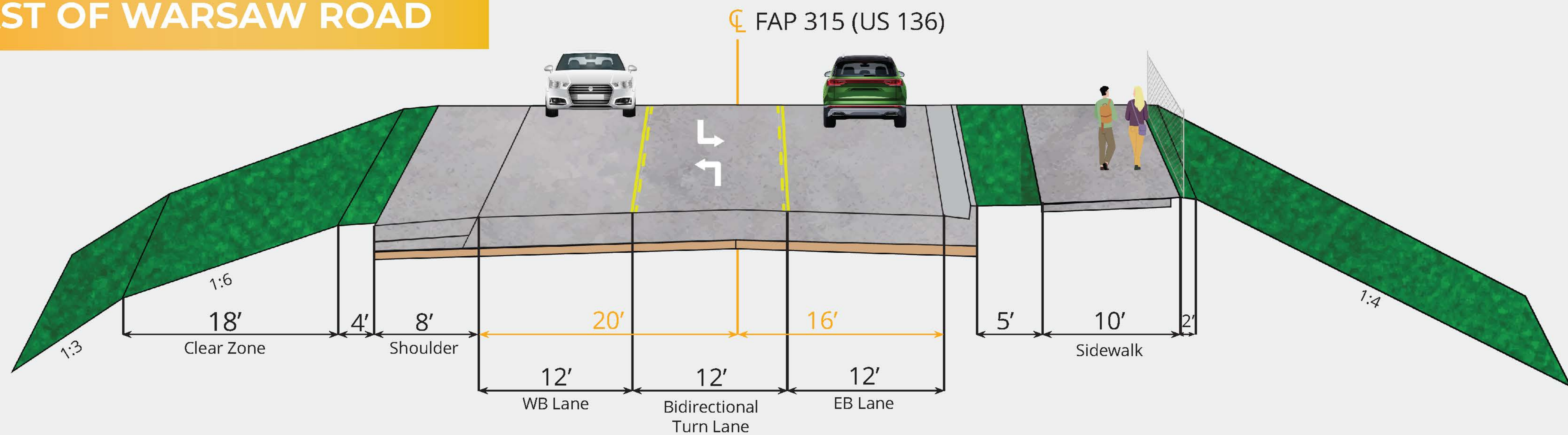
*Community Advisory Group

PROPOSED US 136 TYPICAL SECTION

WEST OF WARSAW ROAD



EAST OF WARSAW ROAD



COMPARISON OF ALTERNATIVES

	Alt 3A Existing Alignment	Alt 7D South Bypass (Preferred)	Alt 8 Bridge over Railroad
Construction Cost	\$29,000,000 (includes \$5,100,000 for RR work)	\$17,400,000	\$45,800,000
Future Maintenance Costs			Higher due to long bridge
Right-of-Way Required	9.5 acres	21.2 acres	18.3 acres
Business Affected	None	Gas Station, Asphalt Plant, Part of Storage Units	Asphalt Plant, All of Storage Units
IDNR Property and Prairie State Eagle Refuge	1.75 acres	2.3 acres	2.5 acres
Stream Impacts	49,400 SF	6,300 SF	12,300 SF
Wetland Impacts	6.0 acres	6.13 acres	7.8 acres
Tree Removal*	7.1 Acres	7.4 Acres	9.8 Acres
Construction Traffic Impacts	Temporary Closure of RR and Warsaw Road	Minimal	Minimal
Structural Challenges	Typical	Typical	Curved bridge, skewed piers, tall bridge girders
Number of RR Crossings	US 136 and Warsaw Rd	US 136 and boat access road	Warsaw Rd and boat access
Warsaw Road Susceptible to Flooding	No	No	Yes
Other Issues	Significant Coordination Required for RR Construction		Project delays due to grant for RR bridge

* Project is within the Cedar Glenn Kibbe INAI Site.
 INAI (Illinois Natural Areas Inventory) sites are areas in Illinois recognized as high quality natural communities that sometimes include habitat for state-listed species. Properties within the INAI side can be publicly or privately owned.

KEY = Areas of Some Impact Areas of Greatest Impact

Another Project in the Area

US 136

MISSISSIPPI RIVER BRIDGE

BRIDGE DECK OVERLAY & REPAIR

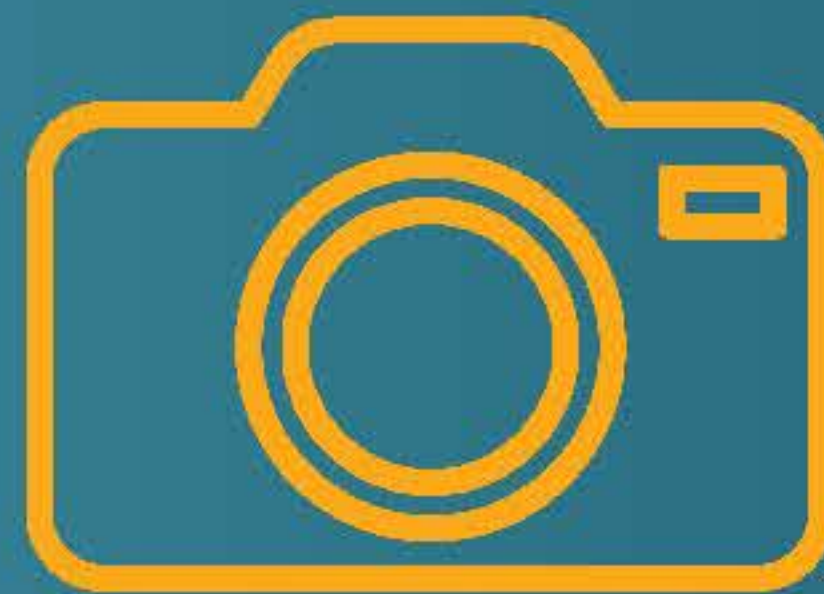
- **Mississippi River Bridge at Keokuk**
- **County: Hancock**
- **Cost: \$10,000,000**
- **Completion Fall 2024**



**Illinois Department
of Transportation**

Thank You For Attending The **PUBLIC HEARING**

USE YOUR



TO LINK DIRECTLY TO
THE PROJECT WEBSITE!



We want to hear from you!



- Turn in your **PUBLIC COMMENT FORM** today.
- See a staff member to record an oral comment.
- Email Jay.Edwards@illinois.gov with comments.
- Email Jay a picture of your **PUBLIC COMMENT FORM**.