

WELCOME



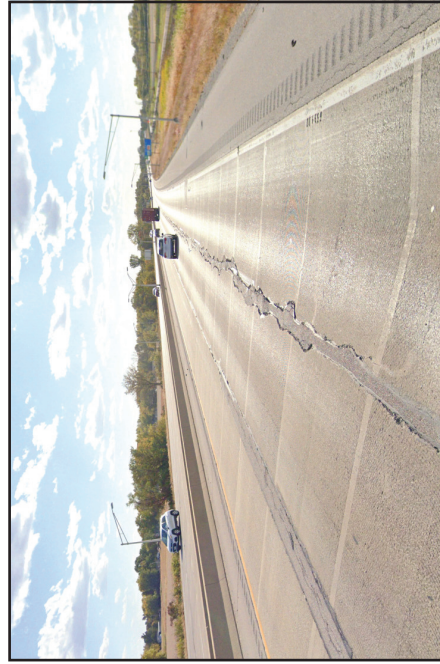
Illinois Department
of Transportation

PROJECT OVERVIEW

The I-255 Rehabilitation and Bridge Repair project is utilizing a complete closure during construction of I-255 from the Illinois Route 15 Interchange (IL 15) in East St. Louis to the Illinois Route 157 Interchange (IL 157) in Cahokia Heights.



PROJECT SCOPE AND EXISTING CONDITION



EXISTING SB PAVEMENT



EXISTING NB PAVEMENT

What to expect

- Patching and resurfacing
 - Mainline lanes
 - Ramps
 - Shoulders
- Bridge repairs
- Concrete barrier wall replacement
- Lighting replacement
- Guardrail replacement
- Drainage repairs
- Sign truss repairs
- Pavement marking

Closure anticipated to begin February 2025 and re-open July 2025

Program cost \$74,300,000



EXISTING LANE JOINT



EXISTING BRIDGE APPROACH



JUSTIFICATION FOR FULL CLOSURE

Traditional (Staged)

Slower

- Two to Three construction seasons

Less Safe

- Changes in normal vehicular travel such as lane alterations can lead to crashes
- High-speed traffic next to workers and construction equipment
- Potential emergency closures due to pavement deterioration and long construction duration

Increased Cost

- Using traditional staged construction methods on this project would cost \$85 million

Increased Future Maintenance

- Results in extra joints and wear from concrete barriers that have to be repaired

Full Closure

Faster

- One construction season

Safer

- No lane and traffic pattern changes that can lead to vehicle crashes
- Removes traffic adjacent to workers

Decreased Costs

- Closing this section of the interstate allows for a savings of approximately \$10 million

Less Future Maintenance

- No damage from staged traffic flow and fewer construction joints



PROJECT SCHEDULE I-255 FULL CLOSURE

Patching

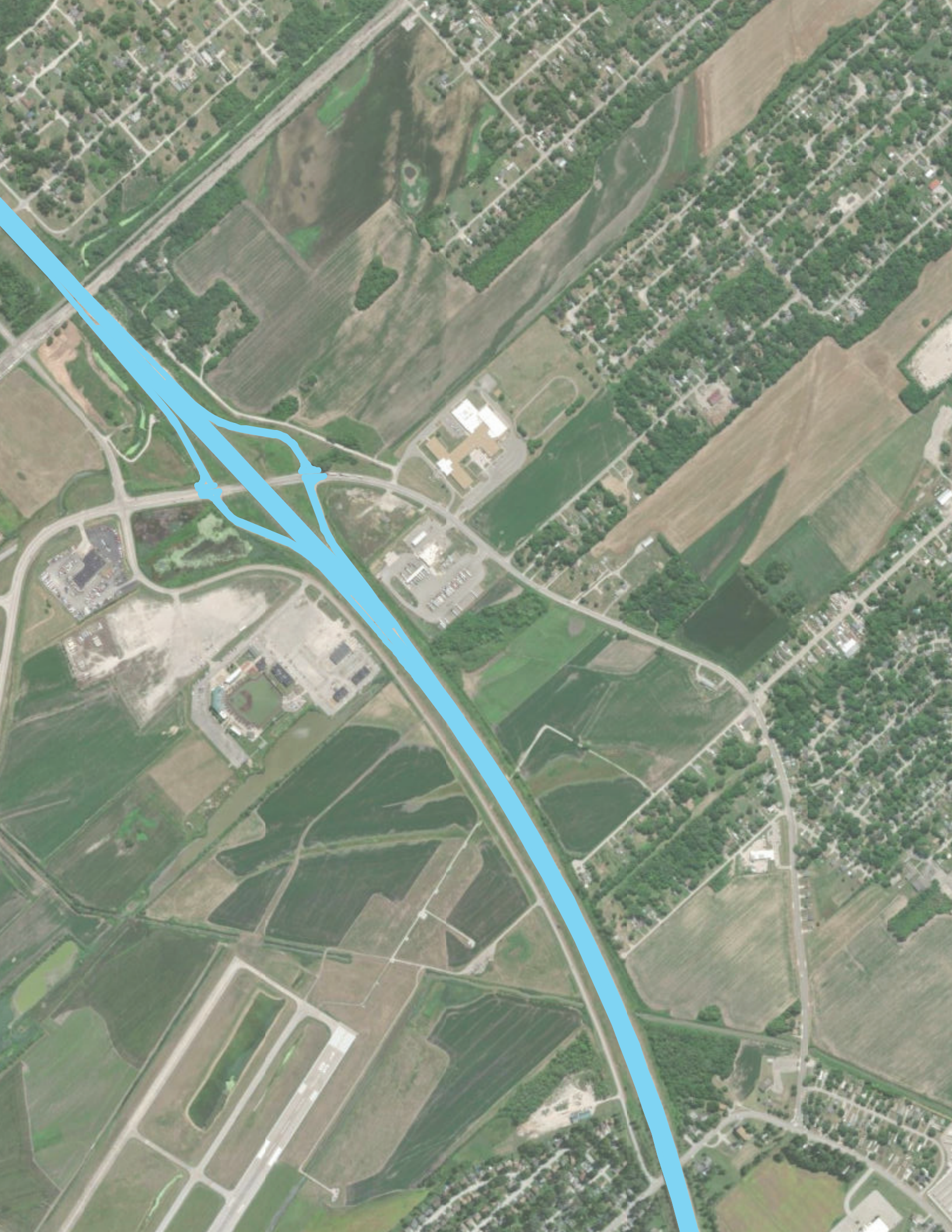
November 2024

Road Closure

Earliest Closure Date
February 1, 2025

Open to Traffic
July 2025







255

163

157

3

55

Alorton

Centreville

Canokia

Dupo

East Carondelet

St Louis Downtown Parks Airport

MISSOURI ILLINOIS

St Clair Morning

SAUGET BUSINESS BLVD

