

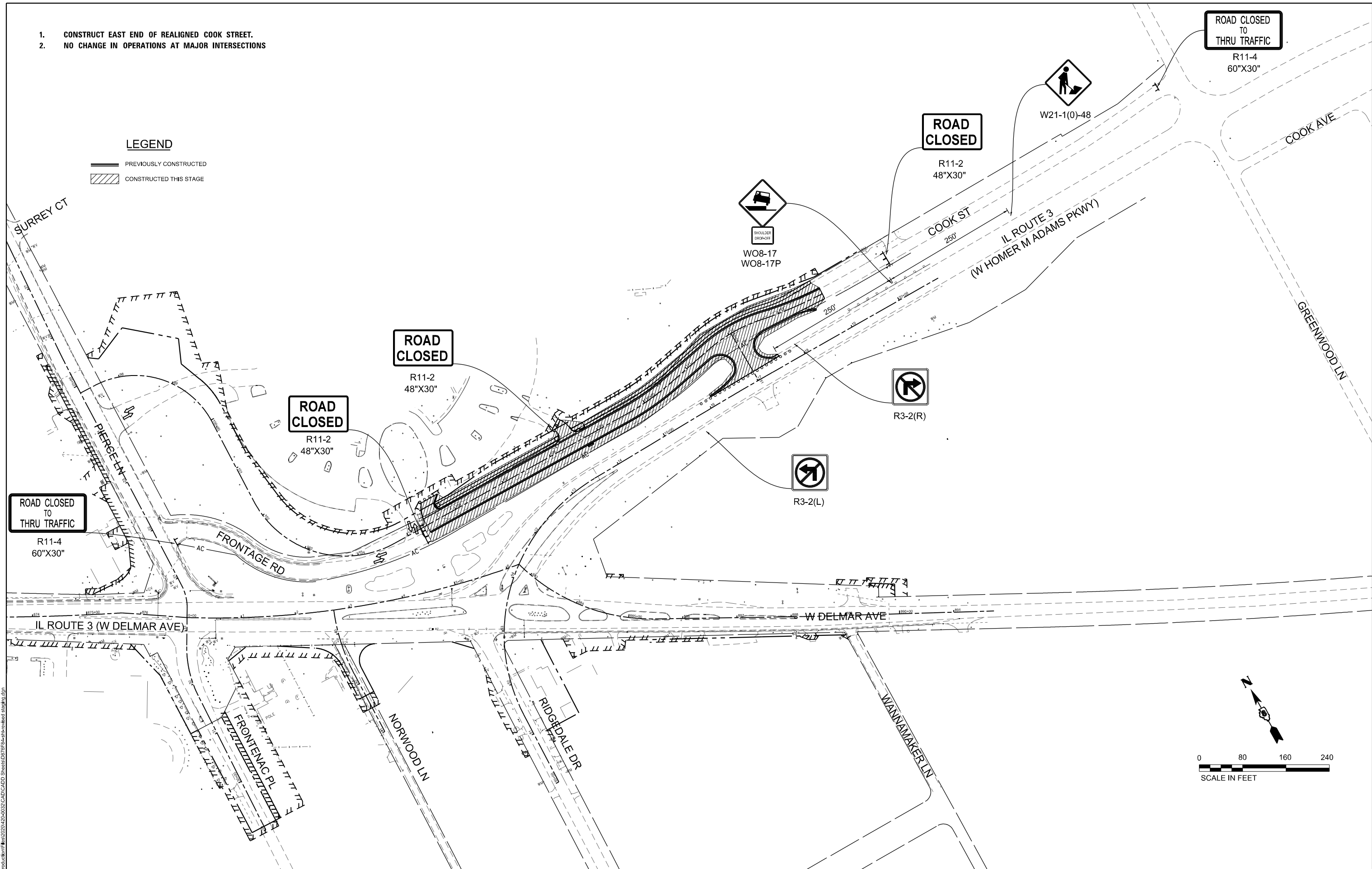


1. CONSTRUCT EAST END OF REALIGNED COOK STREET.
2. NO CHANGE IN OPERATIONS AT MAJOR INTERSECTIONS

LEGEND

-  PREVIOUSLY CONSTRUCTED
-  CONSTRUCTED THIS STAGE



MODEL - Stage 1
 FILE NAME - C:\p000\chris\11762023\CAD\CADD_Sheet\01762023\chris\chris.dwg



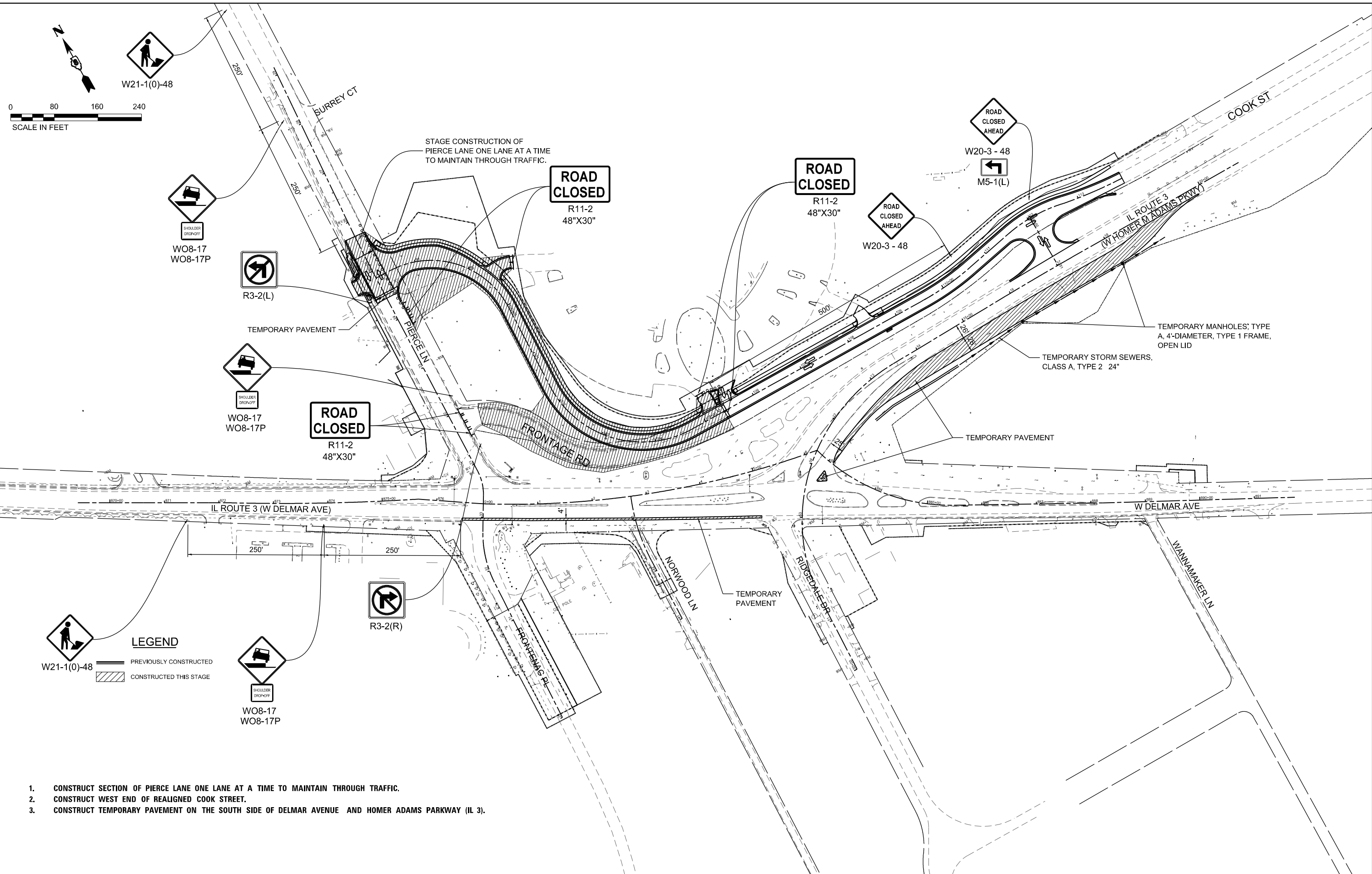
USER NAME	• Jackson	DESIGNED -	NMN	REVISED -	
DRAWN -	CJW	REVISED -			
PLOT SCALE	• 80.0000" / in.	CHECKED -	LWJ	REVISED -	
PLOT DATE	• 4/5/2023	DATE -		REVISED -	

**STATE OF ILLINOIS
DEPARTMENT OF TRANSPORTATION**

STAGE 1	
SCALE: 1"=80'	SHEET 1 OF 1 SHEETS STA. TO STA.

F.A.U. RTE.	SECTION	COUNTY	TOTAL SHEETS	SHEET NO.
*	60R-1	MADISON	93	273
CONTRACT NO. 76F84				
ILLINOIS FED. AID PROJECT				

* 8955 & 8956



STAGE CONSTRUCTION OF
PIERCE LANE ONE LANE AT A TIME
TO MAINTAIN THROUGH TRAFFIC.

TEMPORARY MANHOLES; TYPE
A, 4'-DIAMETER, TYPE 1 FRAME,
OPEN LID

TEMPORARY STORM SEWERS,
CLASS A, TYPE 2 24"

LEGEND
 PREVIOUSLY CONSTRUCTED
 CONSTRUCTED THIS STAGE

1. CONSTRUCT SECTION OF PIERCE LANE ONE LANE AT A TIME TO MAINTAIN THROUGH TRAFFIC.
2. CONSTRUCT WEST END OF REALIGNED COOK STREET.
3. CONSTRUCT TEMPORARY PAVEMENT ON THE SOUTH SIDE OF DELMAR AVENUE AND HOMER ADAMS PARKWAY (IL 3).

MODEL: Stage 2
 FILE NAME: X:\Roadwork\11602020\11602020\CADD\CADD_Sheet\11602020\11602020\stage2.dgn



USER NAME	• tjackson	DESIGNED -	NMN	REVISED -	
DRAWN -	CJW	REVISIONS -		REVISIONS -	
PLOT SCALE	• 80,0000' / in.	CHECKED -	LWJ	REVISIONS -	
PLOT DATE	• 4/5/2023	DATE -		REVISIONS -	

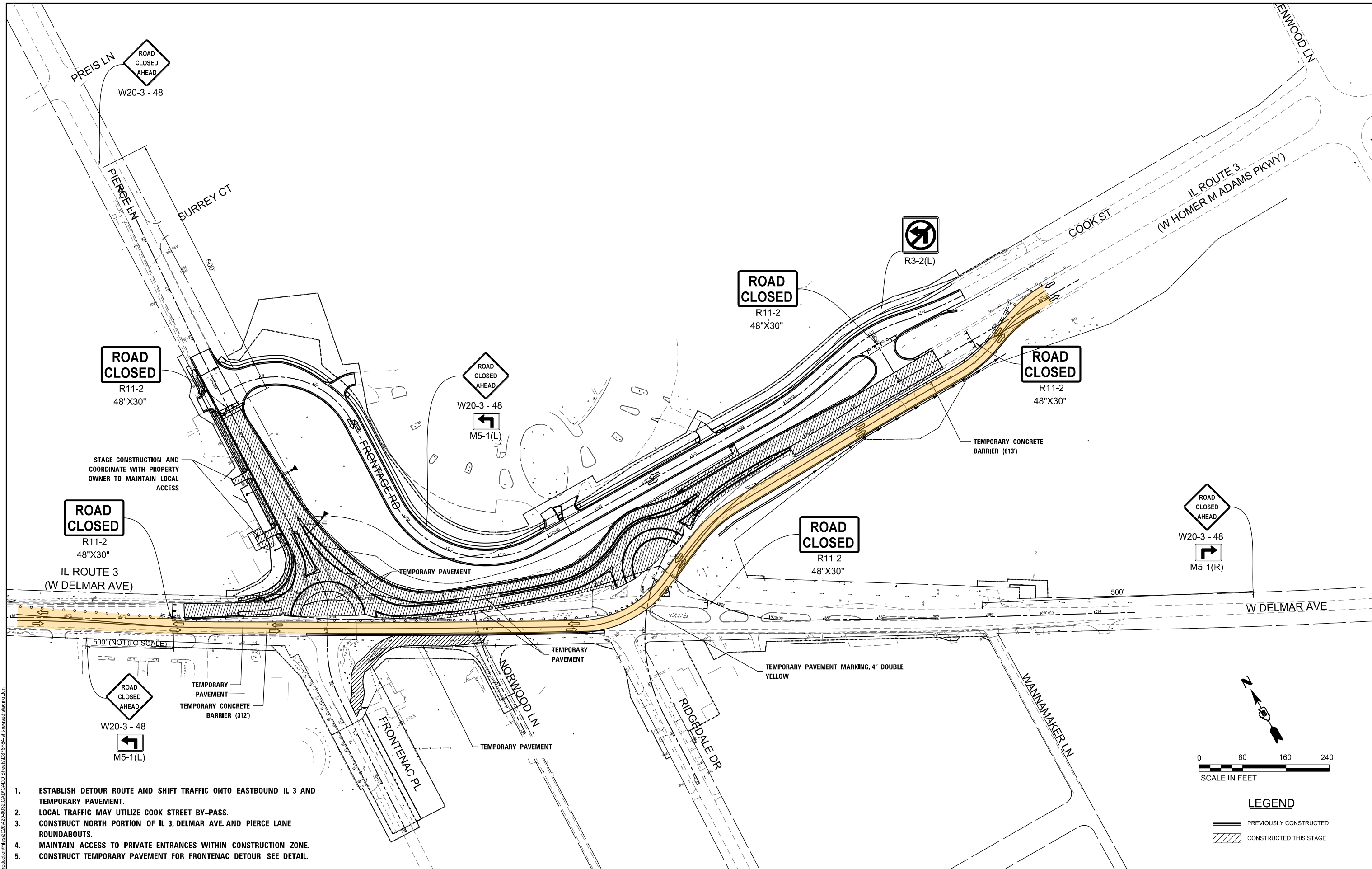
**STATE OF ILLINOIS
DEPARTMENT OF TRANSPORTATION**

STAGE 2

SCALE: 1"=80' SHEET 1 OF 1 SHEETS STA. TO STA.

F.A.U. RTE.	SECTION	COUNTY	TOTAL SHEETS	SHEET NO.
*	60R-1	MADISON	94	273
CONTRACT NO. 76F84				
ILLINOIS FED. AID PROJECT				

* 8955 & 8956



STAGE CONSTRUCTION AND COORDINATE WITH PROPERTY OWNER TO MAINTAIN LOCAL ACCESS

1. ESTABLISH DETOUR ROUTE AND SHIFT TRAFFIC ONTO EASTBOUND IL 3 AND TEMPORARY PAVEMENT.
2. LOCAL TRAFFIC MAY UTILIZE COOK STREET BY-PASS.
3. CONSTRUCT NORTH PORTION OF IL 3, DELMAR AVE. AND PIERCE LANE ROUNDABOUTS.
4. MAINTAIN ACCESS TO PRIVATE ENTRANCES WITHIN CONSTRUCTION ZONE.
5. CONSTRUCT TEMPORARY PAVEMENT FOR FRONTENAC DETOUR. SEE DETAIL.

LEGEND

- PREVIOUSLY CONSTRUCTED
- CONSTRUCTED THIS STAGE

MODEL: Stage 3
 FILE NAME: C:\Roadwork\11612020\11612020\CADD\Sheet\11612020\stage3.dgn
 1928 S/A Bradley, Smith, Davis & Trapp, Inc.
 PHONE: 618.967.1400

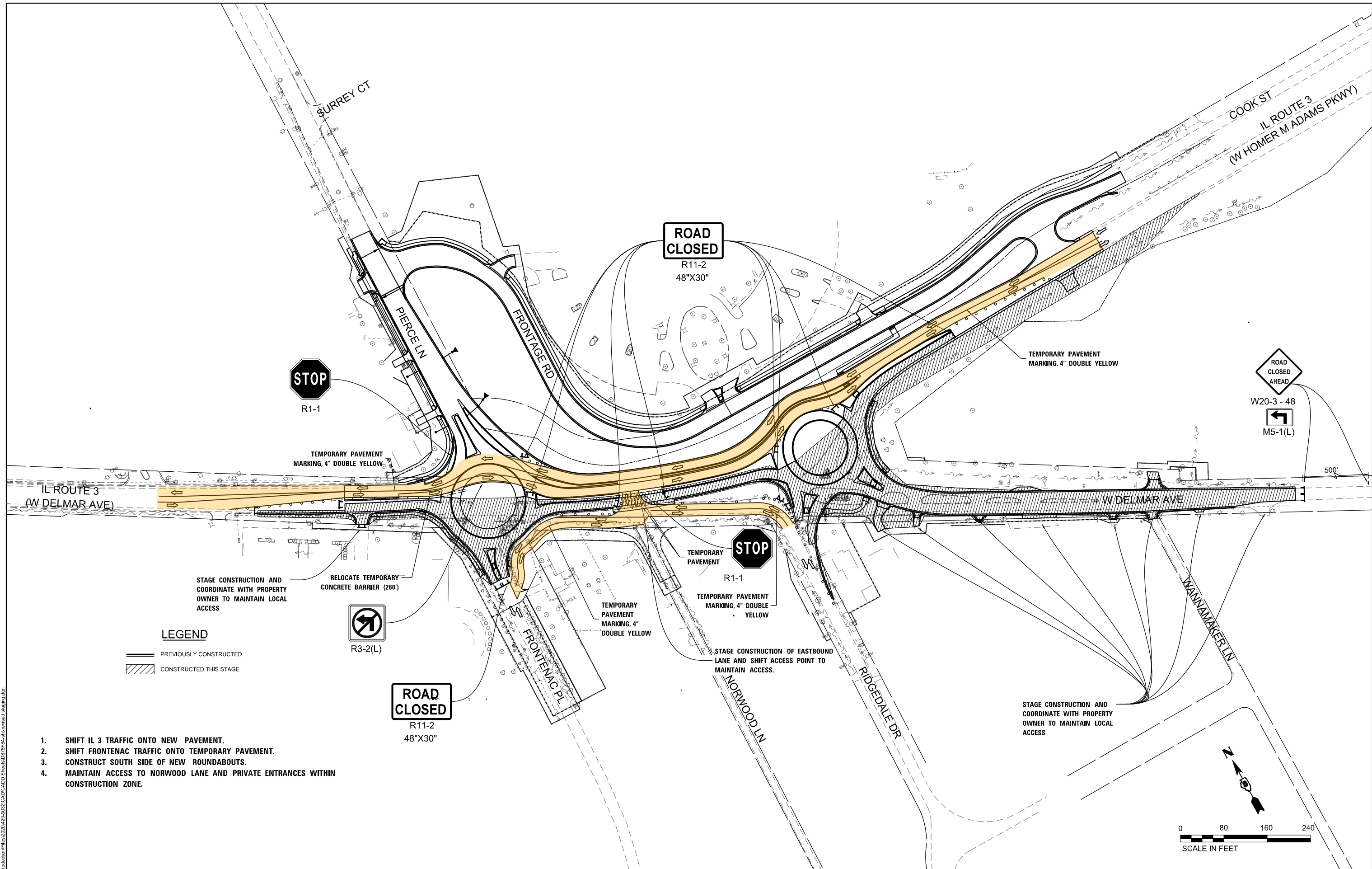
	USER NAME	DESIGNED -	REVISED -
	PLOT SCALE	DRAWN -	REVISED -
	PLOT DATE	CHECKED -	REVISED -
		DATE	REVISED -

STATE OF ILLINOIS
DEPARTMENT OF TRANSPORTATION

STAGE 3
 SCALE: 1"=80' SHEET 1 OF 1 SHEETS STA. TO STA.

F.A.U. RTE.	SECTION	COUNTY	TOTAL SHEETS	SHEET NO.
*	60R-1	MADISON	95	273
CONTRACT NO. 76F84				
ILLINOIS FED. AID PROJECT				

* 8955 & 8956



STAGE CONSTRUCTION AND COORDINATE WITH PROPERTY OWNER TO MAINTAIN LOCAL ACCESS

RELOCATE TEMPORARY CONCRETE BARRIER (260')

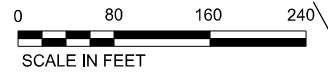
STAGE CONSTRUCTION OF EASTBOUND LANE AND SHIFT ACCESS POINT TO MAINTAIN ACCESS.

STAGE CONSTRUCTION AND COORDINATE WITH PROPERTY OWNER TO MAINTAIN LOCAL ACCESS

LEGEND

	PREVIOUSLY CONSTRUCTED
	CONSTRUCTED THIS STAGE

- SHIFT IL 3 TRAFFIC ONTO NEW PAVEMENT.
- SHIFT FRONTENAC TRAFFIC ONTO TEMPORARY PAVEMENT.
- CONSTRUCT SOUTH SIDE OF NEW ROUNDABOUTS.
- MAINTAIN ACCESS TO NORWOOD LANE AND PRIVATE ENTRANCES WITHIN CONSTRUCTION ZONE.



MODEL: Stage 4
 FILE NAME: X:\Roadwork\11612020\11612020\CADD\CADD_Sheet\11612020\11612020_Stage4.dgn



USER NAME	■ Jackson	DESIGNED -	NMN	REVISED -	
DRAWN	- CJW	REVISED -		REVISED -	
PLOT SCALE	■ 80.0000' / in.	CHECKED -	LWJ	REVISED -	
PLOT DATE	■ 4/5/2023	DATE -		REVISED -	

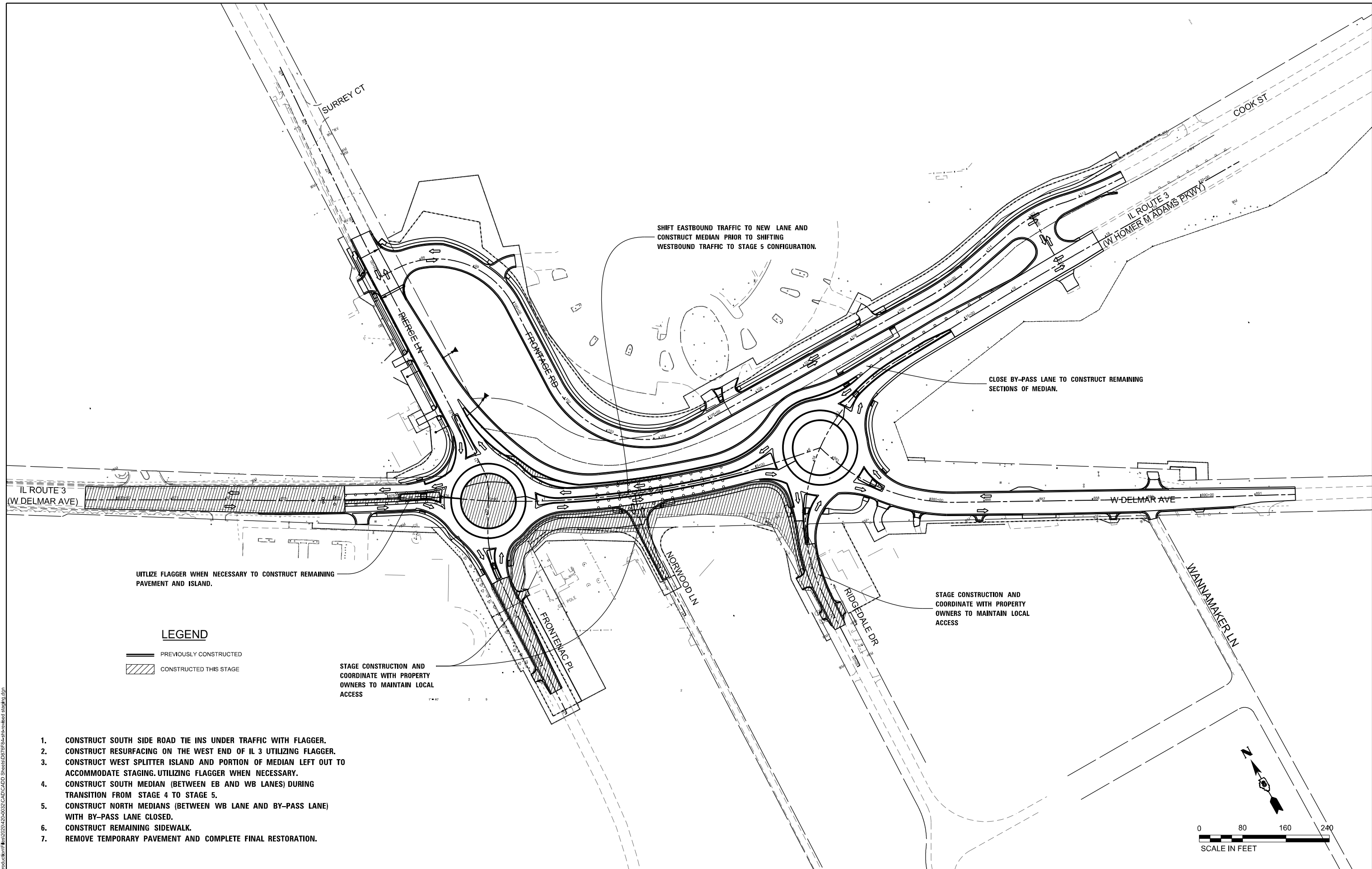
**STATE OF ILLINOIS
DEPARTMENT OF TRANSPORTATION**

STAGE 4

SCALE: 1"=80' SHEET 1 OF 1 SHEETS STA. TO STA.

F.A.U. RTE.	SECTION	COUNTY	TOTAL SHEETS	SHEET NO.
*	60R-1	MADISON	96	273
CONTRACT NO. 76F84				
ILLINOIS FED. AID PROJECT				

* 8955 & 8956



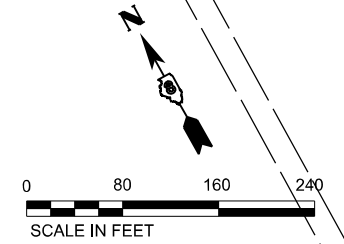
UTILIZE FLAGGER WHEN NECESSARY TO CONSTRUCT REMAINING PAVEMENT AND ISLAND.

LEGEND

- PREVIOUSLY CONSTRUCTED
- CONSTRUCTED THIS STAGE

STAGE CONSTRUCTION AND COORDINATE WITH PROPERTY OWNERS TO MAINTAIN LOCAL ACCESS

1. CONSTRUCT SOUTH SIDE ROAD TIE INS UNDER TRAFFIC WITH FLAGGER.
2. CONSTRUCT RESURFACING ON THE WEST END OF IL 3 UTILIZING FLAGGER.
3. CONSTRUCT WEST SPLITTER ISLAND AND PORTION OF MEDIAN LEFT OUT TO ACCOMMODATE STAGING. UTILIZING FLAGGER WHEN NECESSARY.
4. CONSTRUCT SOUTH MEDIAN (BETWEEN EB AND WB LANES) DURING TRANSITION FROM STAGE 4 TO STAGE 5.
5. CONSTRUCT NORTH MEDIANS (BETWEEN WB LANE AND BY-PASS LANE) WITH BY-PASS LANE CLOSED.
6. CONSTRUCT REMAINING SIDEWALK.
7. REMOVE TEMPORARY PAVEMENT AND COMPLETE FINAL RESTORATION.



MODEL: Stage 5
FILE NAME: C:\Roadwork\11612020\11612020\CADD\Sheet\11612020\stage5.dgn



USER NAME	■ Jackson	DESIGNED -	NMN	REVISED -	
		DRAWN -	CJW	REVISED -	
PLOT SCALE	■ 80,0000" / in.	CHECKED -	LWJ	REVISED -	
PLOT DATE	■ 4/5/2023	DATE -		REVISED -	

**STATE OF ILLINOIS
DEPARTMENT OF TRANSPORTATION**

SCALE: 1"=80' SHEET 1 OF 1 SHEETS STA. TO STA.

STAGE 5

F.A.U. RTE.	SECTION	COUNTY	TOTAL SHEETS	SHEET NO.
*	60R-1	MADISON	97	273
CONTRACT NO. 76F84				
ILLINOIS FED. AID PROJECT				

* 8955 & 8956