



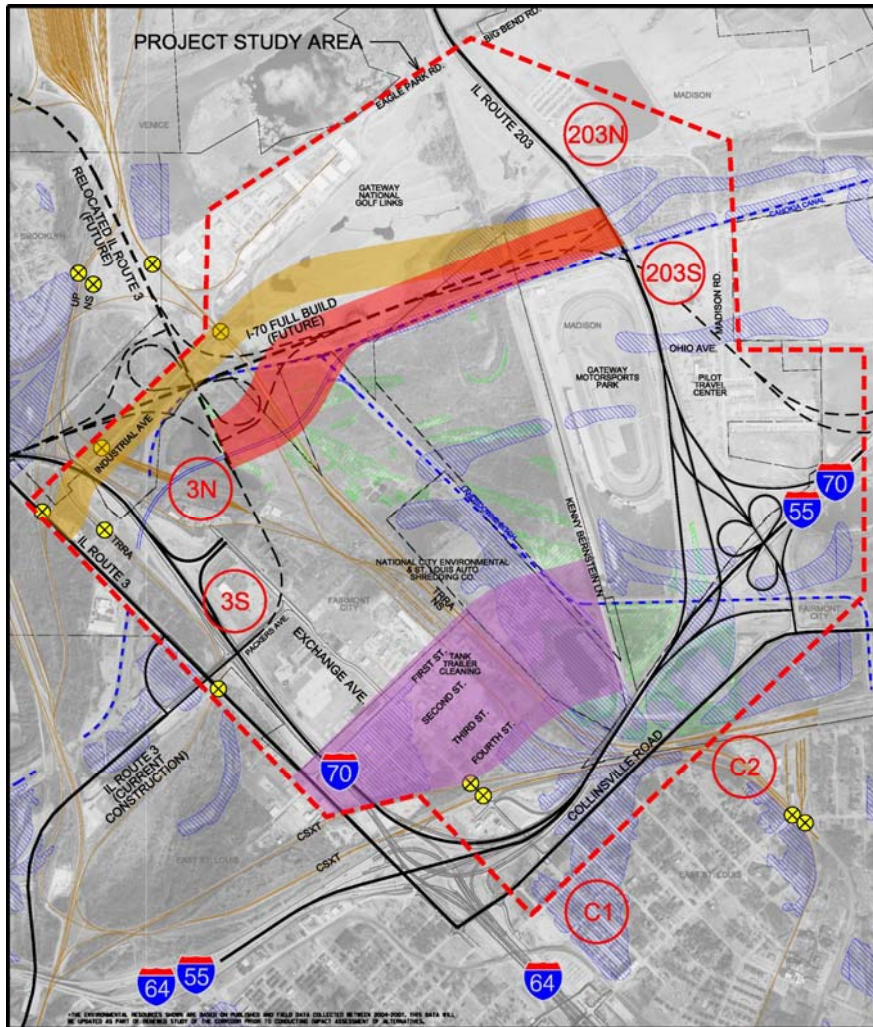
Illinois Route 3 Connector Project

Proposed Conceptual Alternatives

The Proposed Conceptual Alternatives presented on the following boards represent a high-level examination of potential solutions for the Illinois Route 3 Connector. As this study progresses, these alternatives will be further refined and more detailed analysis of their benefits, costs and potential impacts to the natural (e.g. wetlands, floodplains) and human (e.g. business, residents) environments will be determined.



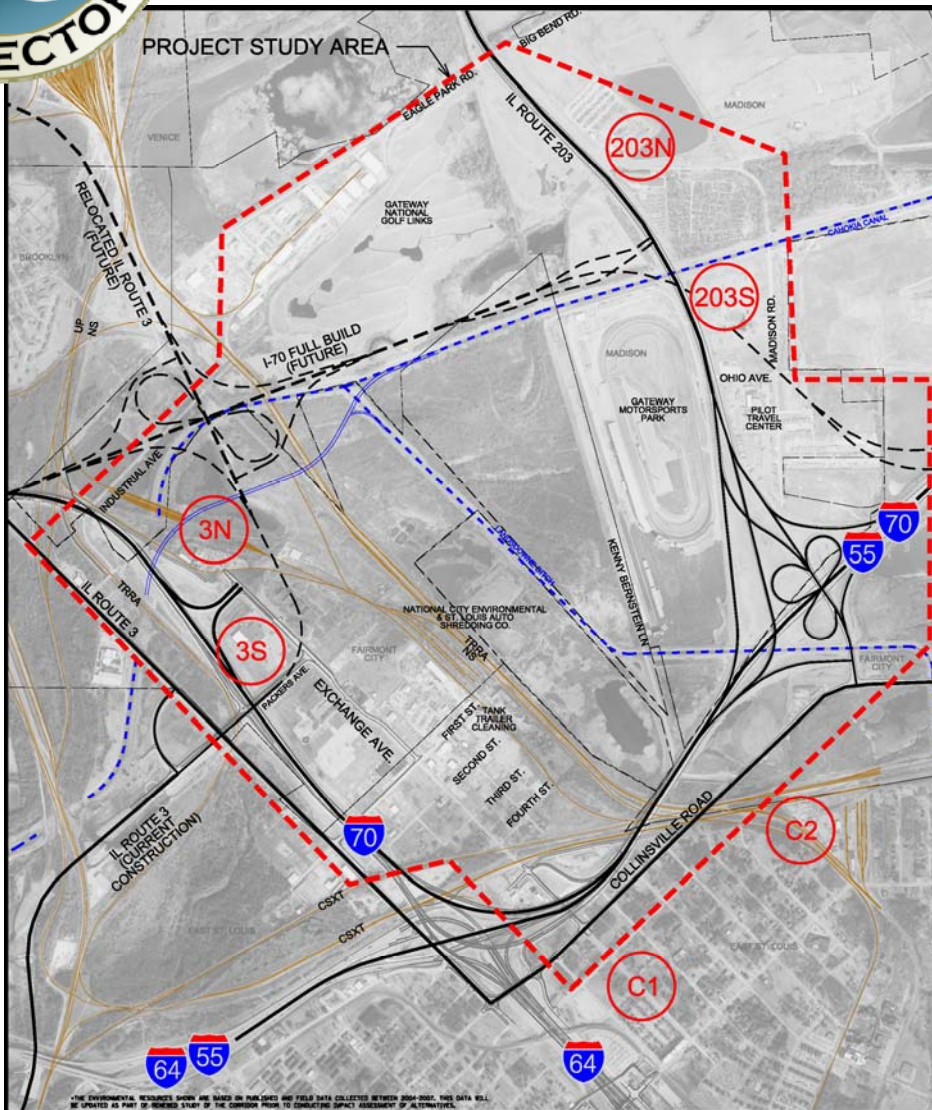
Corridors Proposed to be Eliminated From Consideration



- **Industrial Avenue Corridor**
 - Conflicts with the proposed I-70 Full Build and Relocated IL Route 3
 - At-grade railroad crossing over the TRRA north of existing IL Route 3 (far eastern edge of the study area)
- **I-70 Full Build Corridor**
 - Potential conflicts with the proposed I-70 Full Build
 - Conflicts with the ultimate relocation of the Cahokia Canal (required for the future I-70 and Relocated IL Route 3 interchange)
- **First-Fourth Street Corridor**
 - Constructability issues related to bridging over Auto Shredder Cranes (~60' high)
 - Significant impacts to area business operations



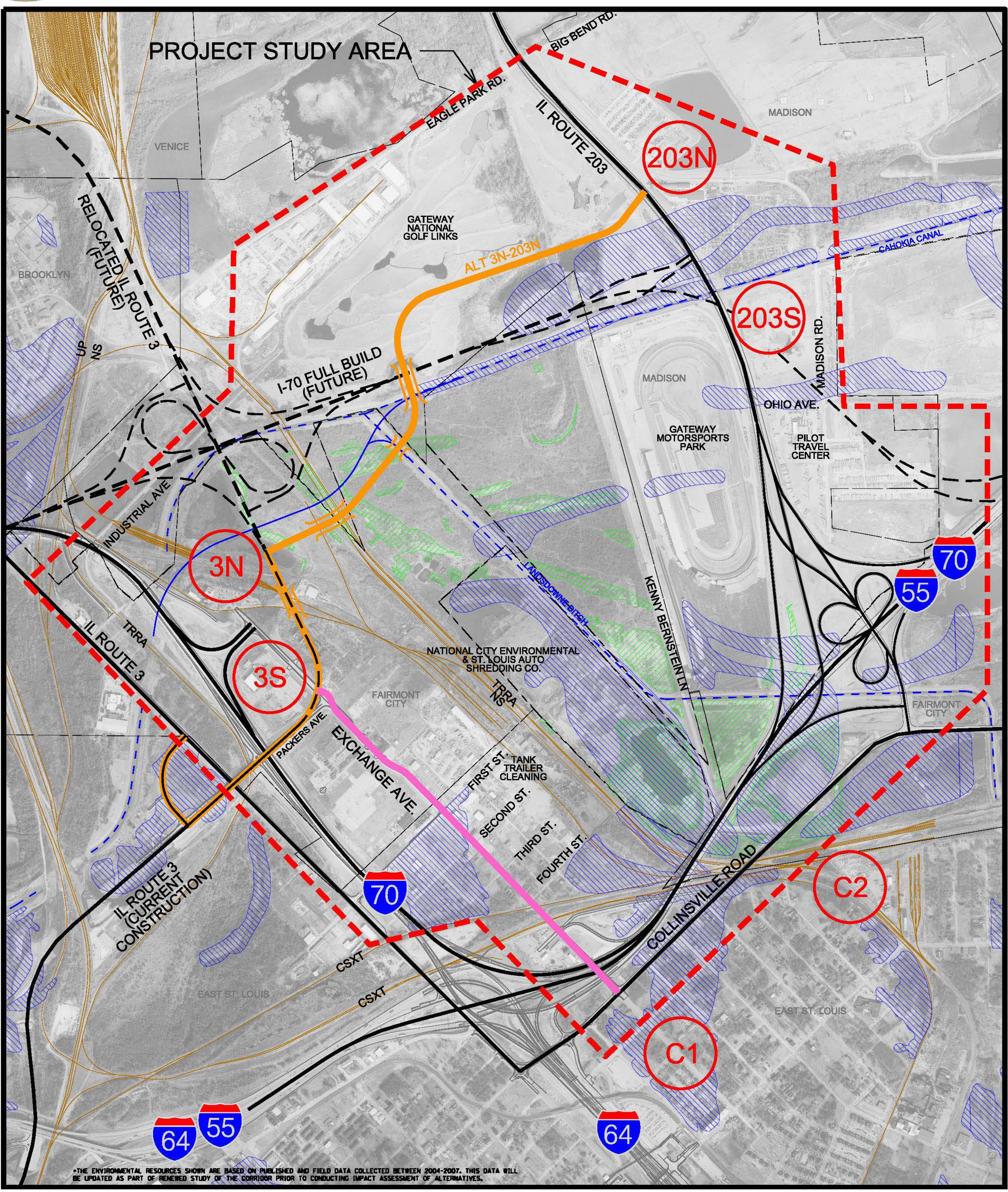
Route Connection Points



- Alternative naming uses the following connection points:
- Illinois Route 3
 - 3N
 - 3S
- Illinois Route 203
 - 203N
 - 203S
- Collinsville Road
 - C1
 - C2



Alternative 3N-203N-C1

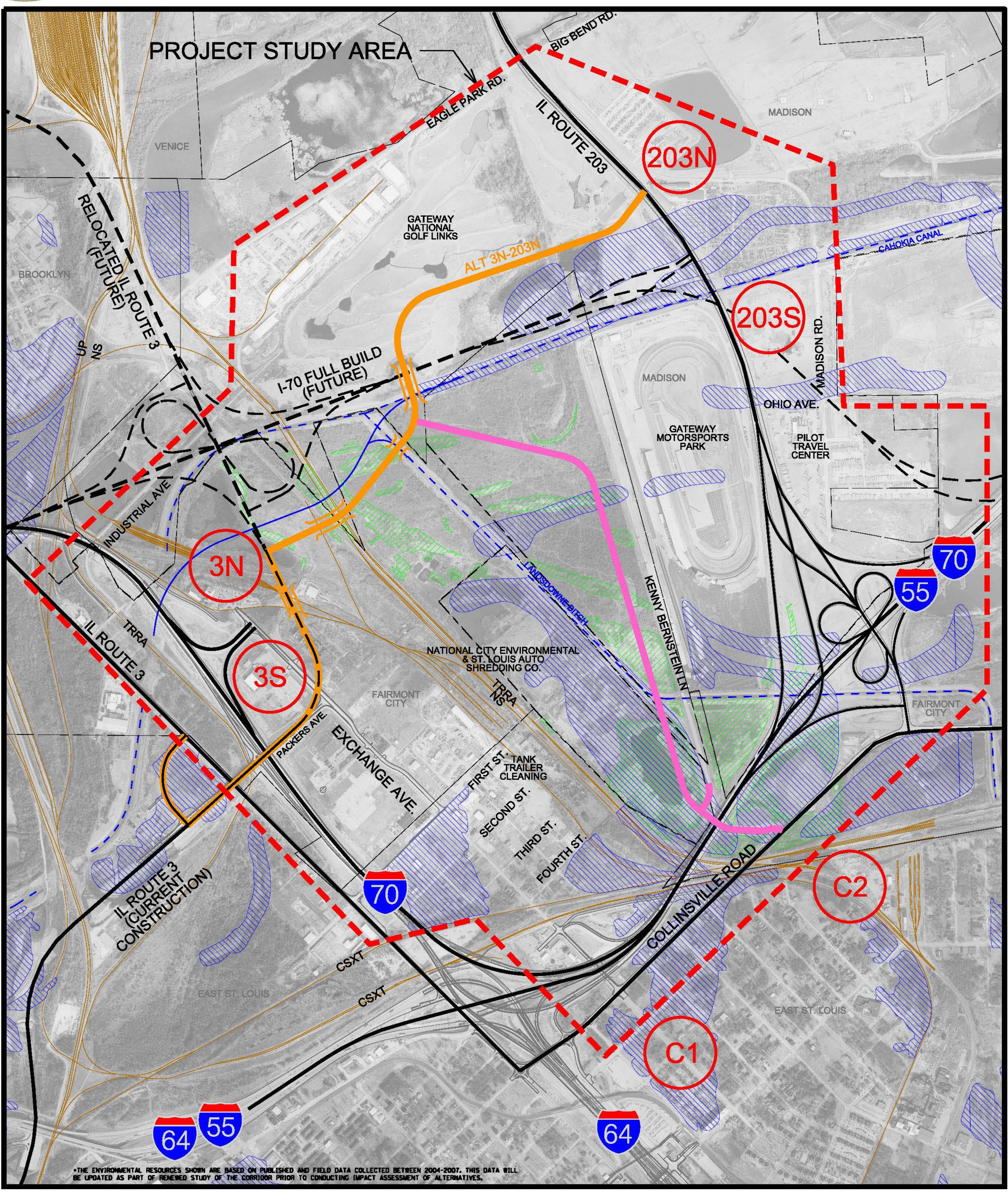


*THE ENVIRONMENTAL RESOURCES SHOWN ARE BASED ON PUBLISHED AND FIELD DATA COLLECTED BETWEEN 2004-2007. THIS DATA WILL BE UPDATED AS PART OF RENEWED STUDY OF THE CORRIDOR PRIOR TO CONDUCTING IMPACT ASSESSMENT OF ALTERNATIVES.

	LEGEND PROJECT STUDY AREA ILLINOIS ROUTE 3 CONNECTOR ROADWAY CONNECTION POINTS MUNICIPAL BOUNDARY EXISTING RAIL ROAD EXISTING DITCH/CANAL POTENTIAL DITCH/CANAL RELOCATION FOR I-70 FULL BUILD EXISTING OR CURRENT CONSTRUCTION ROAD PROPOSED FUTURE BUILD	ALT 3N-203N ALT 3N-203S ALT 3S-203N ALT 3S-203S CONNECTION TO COLLINSVILLE RD. INTERIM CONNECTION PRE IL3 CONSTRUCTION PROPOSED STRUCTURE	INHS WETLANDS FEMA 100-YEAR FLOODZONES
--	-------------------------------------------------------------------------------------------------------------------------------------------------------------------------------------------------------------------------------------------------------------------------------------------	-------------------------------------------------------------------------------------------------------------------------------------------------------------	-------------------------------------------



Alternative 3N-203N-C2

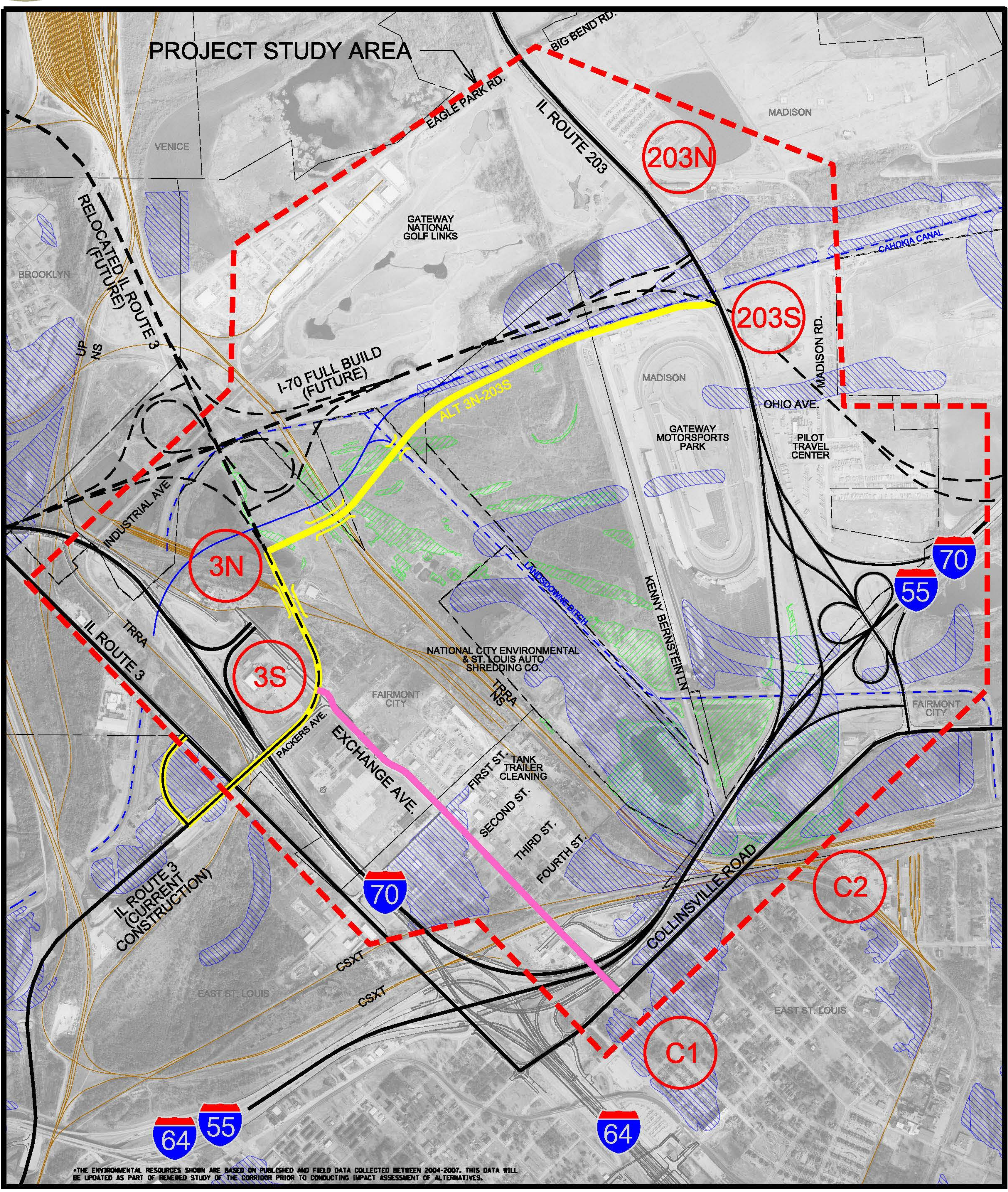


*THE ENVIRONMENTAL RESOURCES SHOWN ARE BASED ON PUBLISHED AND FIELD DATA COLLECTED BETWEEN 2004-2007. THIS DATA WILL BE UPDATED AS PART OF RENEWED STUDY OF THE CORRIDOR PRIOR TO CONDUCTING IMPACT ASSESSMENT OF ALTERNATIVES.

	LEGEND PROJECT STUDY AREA ILLINOIS ROUTE 3 CONNECTOR ROADWAY CONNECTION POINTS MUNICIPAL BOUNDARY EXISTING RAIL ROAD EXISTING DITCH/CANAL POTENTIAL DITCH/CANAL RELOCATION FOR I-70 FULL BUILD EXISTING OR CURRENT CONSTRUCTION ROAD PROPOSED FUTURE BUILD	ALT 3N-203N ALT 3N-203S ALT 3S-203N ALT 3S-203S CONNECTION TO COLLINSVILLE RD. INTERIM CONNECTION PRE IL3 CONSTRUCTION PROPOSED STRUCTURE	INHS WETLANDS FEMA 100-YEAR FLOODZONES
--	-------------------------------------------------------------------------------------------------------------------------------------------------------------------------------------------------------------------------------------------------------------------------------------------	-------------------------------------------------------------------------------------------------------------------------------------------------------------	-------------------------------------------



Alternative 3N-203S-C1



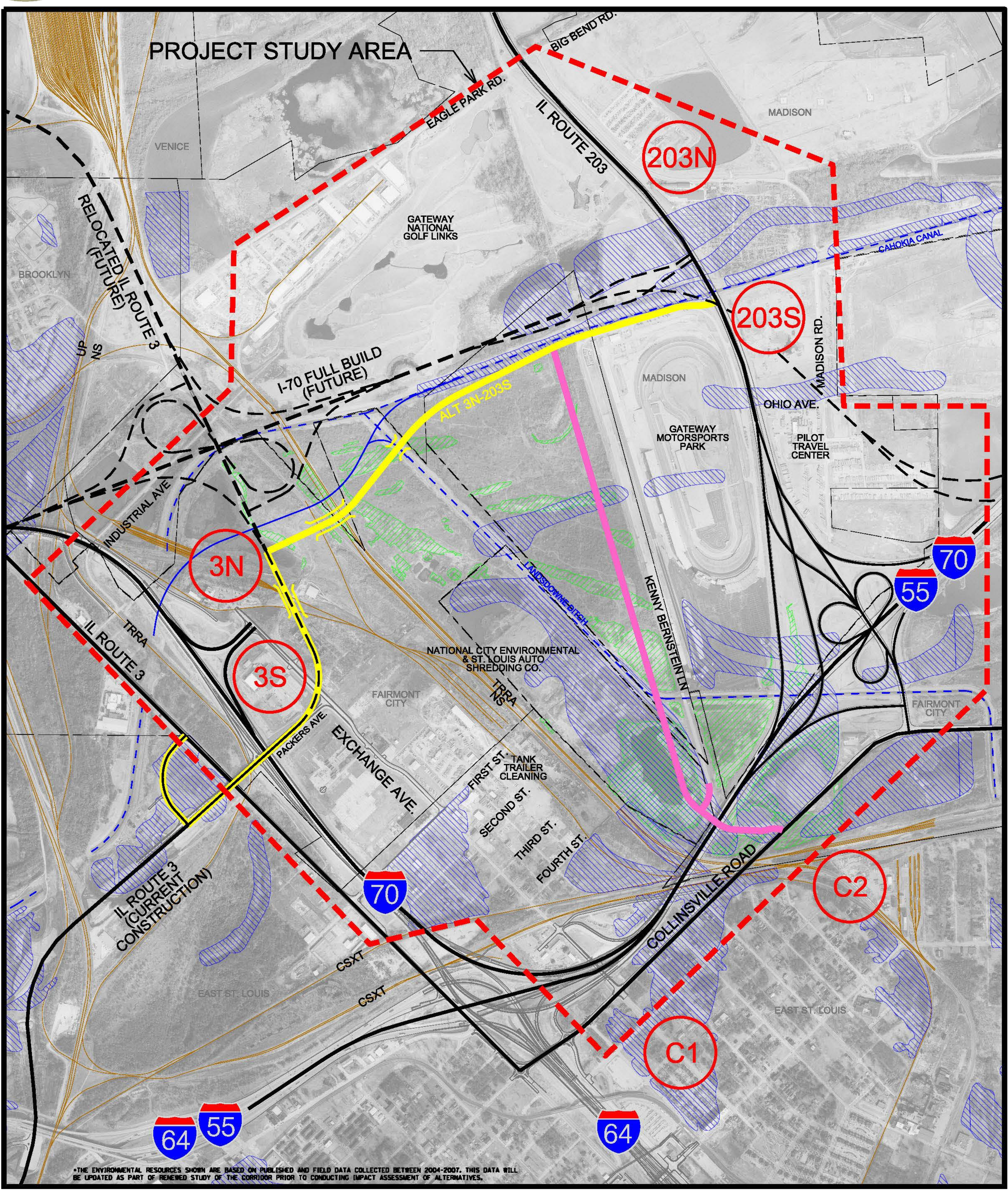
*THE ENVIRONMENTAL RESOURCES SHOWN ARE BASED ON PUBLISHED AND FIELD DATA COLLECTED BETWEEN 2004-2007. THIS DATA WILL BE UPDATED AS PART OF RENEWED STUDY OF THE CORRIDOR PRIOR TO CONDUCTING IMPACT ASSESSMENT OF ALTERNATIVES.

	LEGEND	PROJECT STUDY AREA ILLINOIS ROUTE 3 CONNECTOR ROADWAY CONNECTION POINTS MUNICIPAL BOUNDARY EXISTING RAIL ROAD EXISTING DITCH/CANAL POTENTIAL DITCH/CANAL RELOCATION FOR I-70 FULL BUILD EXISTING OR CURRENT CONSTRUCTION ROAD PROPOSED FUTURE BUILD	ALT 3N-203N ALT 3N-203S ALT 3S-203N ALT 3S-203S CONNECTION TO COLLINSVILLE RD. INTERIM CONNECTION PRE IL3 CONSTRUCTION PROPOSED STRUCTURE	INHS WETLANDS FEMA 100-YEAR FLOODZONES
	PROJECT STUDY AREA ILLINOIS ROUTE 3 CONNECTOR ROADWAY CONNECTION POINTS MUNICIPAL BOUNDARY EXISTING RAIL ROAD EXISTING DITCH/CANAL POTENTIAL DITCH/CANAL RELOCATION FOR I-70 FULL BUILD EXISTING OR CURRENT CONSTRUCTION ROAD PROPOSED FUTURE BUILD	ALT 3N-203N ALT 3N-203S ALT 3S-203N ALT 3S-203S CONNECTION TO COLLINSVILLE RD. INTERIM CONNECTION PRE IL3 CONSTRUCTION PROPOSED STRUCTURE	INHS WETLANDS FEMA 100-YEAR FLOODZONES	





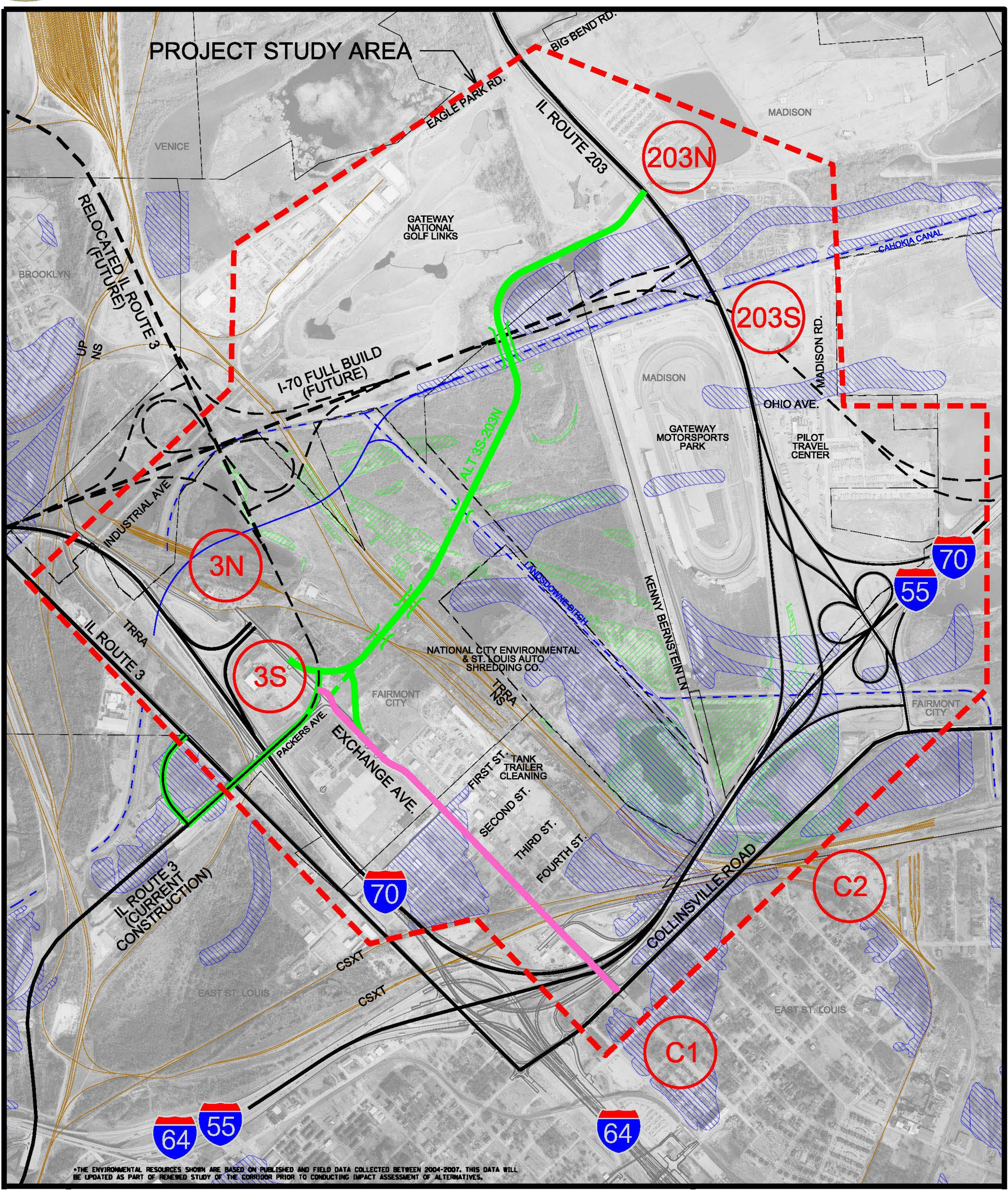
Alternative 3N-203S-C2



 N.T.S.	LEGEND PROJECT STUDY AREA ILLINOIS ROUTE 3 CONNECTOR ROADWAY CONNECTION POINTS MUNICIPAL BOUNDARY EXISTING RAIL ROAD EXISTING DITCH/CANAL POTENTIAL DITCH/CANAL RELOCATION FOR I-70 FULL BUILD EXISTING OR CURRENT CONSTRUCTION ROAD PROPOSED FUTURE BUILD	ALT 3N-203N ALT 3N-203S ALT 3S-203N ALT 3S-203S CONNECTION TO COLLINSVILLE RD. INTERIM CONNECTION PRE IL3 CONSTRUCTION PROPOSED STRUCTURE	INHS WETLANDS FEMA 100-YEAR FLOODZONES
------------	-------------------------------------------------------------------------------------------------------------------------------------------------------------------------------------------------------------------------------------------------------------------------------------------	-------------------------------------------------------------------------------------------------------------------------------------------------------------	-------------------------------------------



Alternative 3S-203N-C1

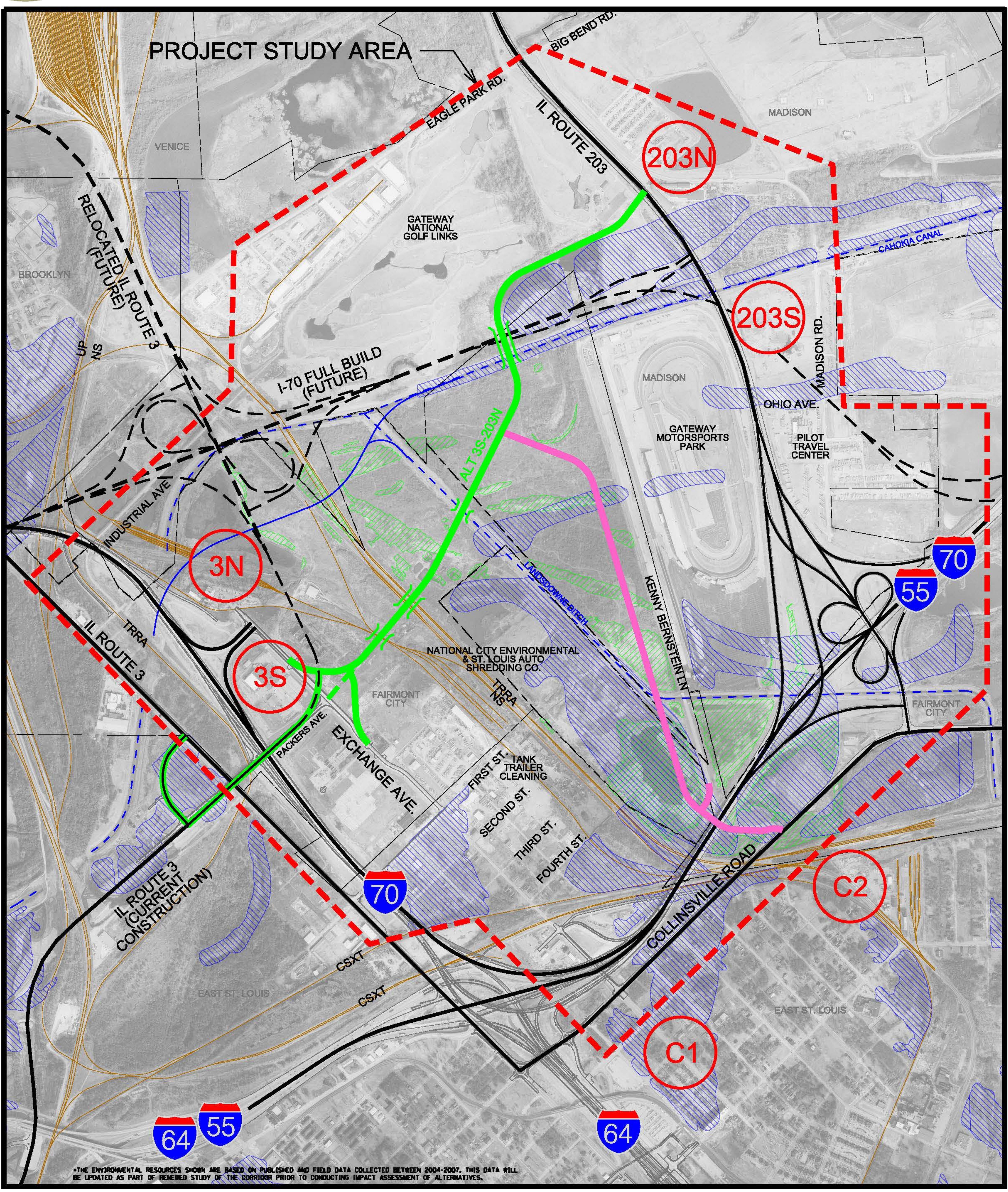


*THE ENVIRONMENTAL RESOURCES SHOWN ARE BASED ON PUBLISHED AND FIELD DATA COLLECTED BETWEEN 2004-2007. THIS DATA WILL BE UPDATED AS PART OF RENEWED STUDY OF THE CORRIDOR PRIOR TO CONDUCTING IMPACT ASSESSMENT OF ALTERNATIVES.

 N N.T.S.	LEGEND	PROJECT STUDY AREA ILLINOIS ROUTE 3 CONNECTOR ROADWAY CONNECTION POINTS MUNICIPAL BOUNDARY EXISTING RAIL ROAD EXISTING DITCH/CANAL POTENTIAL DITCH/CANAL RELOCATION FOR I-70 FULL BUILD EXISTING OR CURRENT CONSTRUCTION ROAD PROPOSED FUTURE BUILD	ALT 3N-203N ALT 3N-203S ALT 3S-203N ALT 3S-203S CONNECTION TO COLLINSVILLE RD. INTERIM CONNECTION PRE IL3 CONSTRUCTION PROPOSED STRUCTURE	INHS WETLANDS FEMA 100-YEAR FLOODZONES
-----------------	---------------	--------------------------------------------------------------------------------------------------------------------------------------------------------------------------------------------------------------------------------------------------------------------------	-------------------------------------------------------------------------------------------------------------------------------------------------------------	-------------------------------------------



Alternative 3S-203N-C2

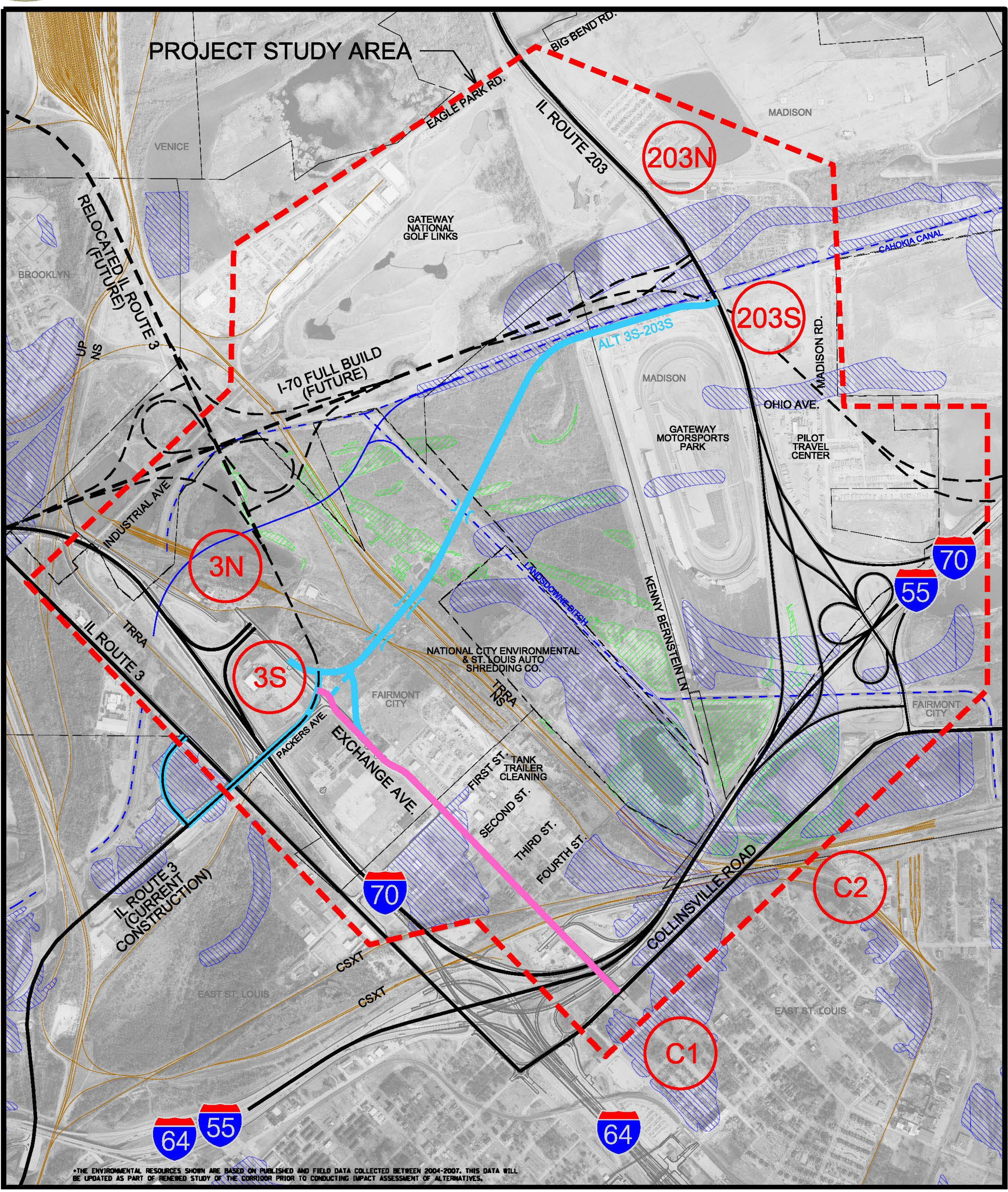


*THE ENVIRONMENTAL RESOURCES SHOWN ARE BASED ON PUBLISHED AND FIELD DATA COLLECTED BETWEEN 2004-2007. THIS DATA WILL BE UPDATED AS PART OF RENEWED STUDY OF THE CORRIDOR PRIOR TO CONDUCTING IMPACT ASSESSMENT OF ALTERNATIVES.

 N.T.S.	LEGEND PROJECT STUDY AREA ILLINOIS ROUTE 3 CONNECTOR ROADWAY CONNECTION POINTS MUNICIPAL BOUNDARY EXISTING RAIL ROAD EXISTING DITCH/CANAL POTENTIAL DITCH/CANAL RELOCATION FOR I-70 FULL BUILD EXISTING OR CURRENT CONSTRUCTION ROAD PROPOSED FUTURE BUILD	ALT 3N-203N ALT 3N-203S ALT 3S-203N ALT 3S-203S CONNECTION TO COLLINSVILLE RD. INTERIM CONNECTION PRE IL3 CONSTRUCTION PROPOSED STRUCTURE	INHS WETLANDS FEMA 100-YEAR FLOODZONES
------------	-------------------------------------------------------------------------------------------------------------------------------------------------------------------------------------------------------------------------------------------------------------------------------------------	-------------------------------------------------------------------------------------------------------------------------------------------------------------	-------------------------------------------



Alternative 3S-203S-C1

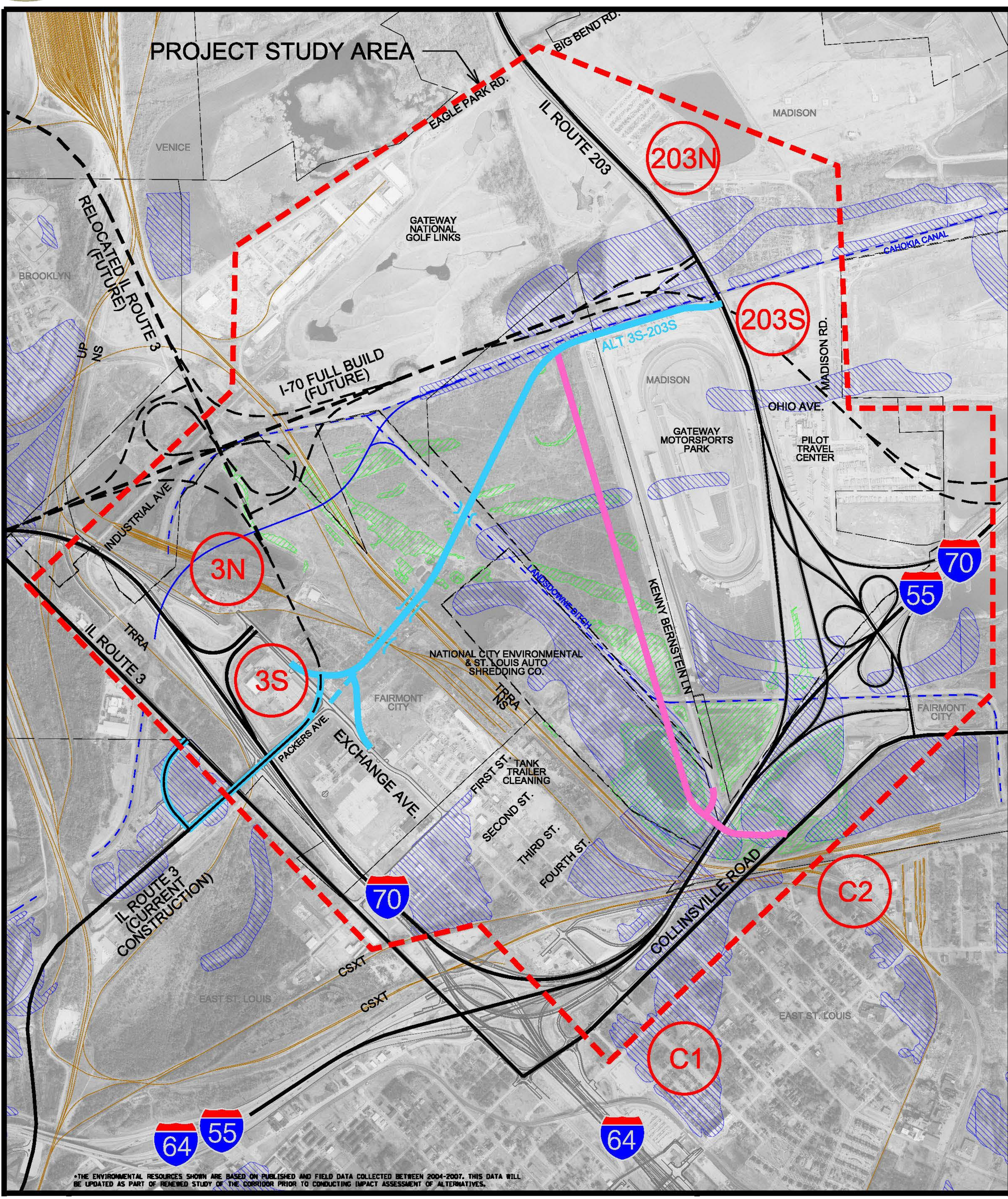


*THE ENVIRONMENTAL RESOURCES SHOWN ARE BASED ON PUBLISHED AND FIELD DATA COLLECTED BETWEEN 2004-2007. THIS DATA WILL BE UPDATED AS PART OF RENEWED STUDY OF THE CORRIDOR PRIOR TO CONDUCTING IMPACT ASSESSMENT OF ALTERNATIVES.

	LEGEND PROJECT STUDY AREA ILLINOIS ROUTE 3 CONNECTOR ROADWAY CONNECTION POINTS MUNICIPAL BOUNDARY EXISTING RAIL ROAD EXISTING DITCH/CANAL POTENTIAL DITCH/CANAL RELOCATION FOR I-70 FULL BUILD EXISTING OR CURRENT CONSTRUCTION ROAD PROPOSED FUTURE BUILD	ALT 3N-203N ALT 3N-203S ALT 3S-203N ALT 3S-203S CONNECTION TO COLLINSVILLE RD. INTERIM CONNECTION PRE IL3 CONSTRUCTION PROPOSED STRUCTURE	INHS WETLANDS FEMA 100-YEAR FLOODZONES
--	-------------------------------------------------------------------------------------------------------------------------------------------------------------------------------------------------------------------------------------------------------------------------------------------	-------------------------------------------------------------------------------------------------------------------------------------------------------------	-------------------------------------------



Alternative 3S-203S-C2



*THE ENVIRONMENTAL RESOURCES SHOWN ARE BASED ON PUBLISHED AND FIELD DATA COLLECTED BETWEEN 2004-2007. THIS DATA WILL BE UPDATED AS PART OF RENEWED STUDY OF THE CORRIDOR PRIOR TO CONDUCTING IMPACT ASSESSMENT OF ALTERNATIVES.

	LEGEND	<ul style="list-style-type: none"> ALT 3N-203N ALT 3N-203S ALT 3S-203N ALT 3S-203S CONNECTION TO COLLINSVILLE RD. INTERIM CONNECTION PRE I-3 CONSTRUCTION PROPOSED STRUCTURE 	<ul style="list-style-type: none"> INHS WETLANDS FEMA 100-YEAR FLOODZONES
	<ul style="list-style-type: none"> PROJECT STUDY AREA ILLINOIS ROUTE 3 CONNECTOR ROADWAY CONNECTION POINTS MUNICIPAL BOUNDARY EXISTING RAIL ROAD EXISTING DITCH/CANAL POTENTIAL DITCH/CANAL RELOCATION FOR I-70 FULL BUILD EXISTING OR CURRENT CONSTRUCTION ROAD PROPOSED FUTURE BUILD 		