

# ILLINOIS ROUTE 3 CONNECTOR PROJECT PUBLIC INFORMATION MEETING



## Why are we here today?

The Illinois Department of Transportation (IDOT) would like to take this opportunity to introduce the Illinois Route 3 Connector Project. This newsletter aims to describe the stakeholder involvement process, solicit input about the study area, and request your future participation (see the back page for ways you can be involved in this project).

## Why is the Illinois Route 3 Connector Project Needed?

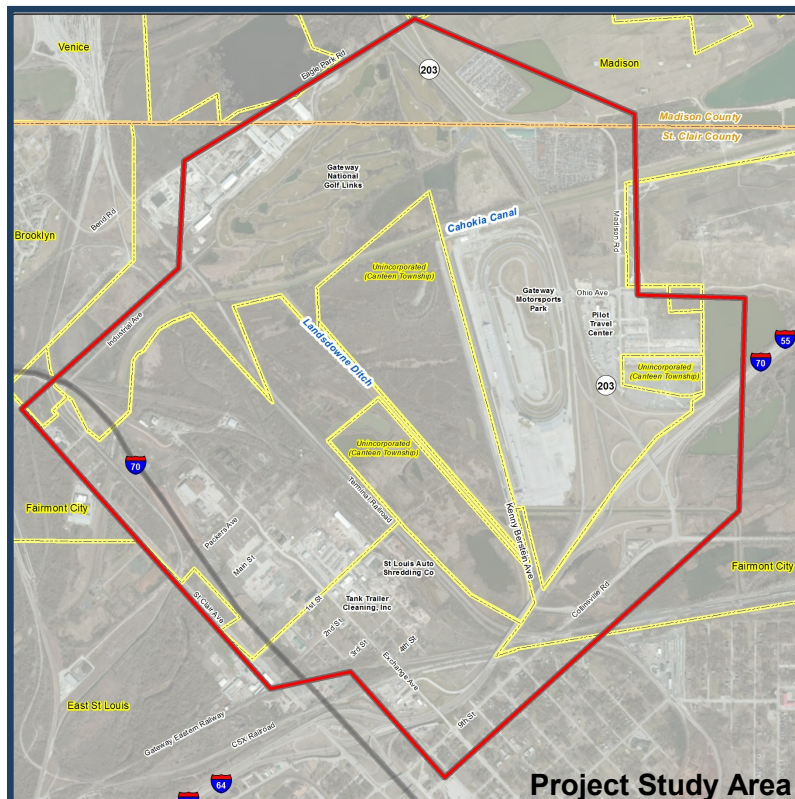
IDOT is considering transportation improvements by constructing a connector between IL Route 3 and IL Route 203, with a connection to Collinsville Road in St. Clair County to address these issues of concern identified by the Community Advisory Group:

- ◆ Safety concerns resulting from truck traffic using local roads
- ◆ Lengthy emergency vehicle response times due to excessive delays resulting from at-grade railroad crossings and lack of alternate routes
- ◆ Improved access to area services such as businesses (jobs), shopping, recreation, and social services
- ◆ Safety and delay concerns with at-grade railroad crossings on IL Route 3, Exchange Avenue, and Industrial Avenue
- ◆ Accommodating future development in vacant properties north of IL Route 3 between Industrial Avenue and Collinsville Road

IDOT is considering transportation improvements. With the completion of the Mississippi River Bridge (MRB) Project in early 2014, the Illinois Route 3 Connector Project has been initiated to take a fresh look at the needs and the changing conditions in the study area. The Illinois Route 3 Connector Project seeks to improve mobility, access and safety in the area, and provide additional connection options to

existing roads with heavy truck traffic and/or railroad crossings. The improvements may include improving existing routes or building a new roadway.

*We encourage all who are interested to take part in the project. It is only through the participation of those who work and live near the area that the best possible project can be achieved.*

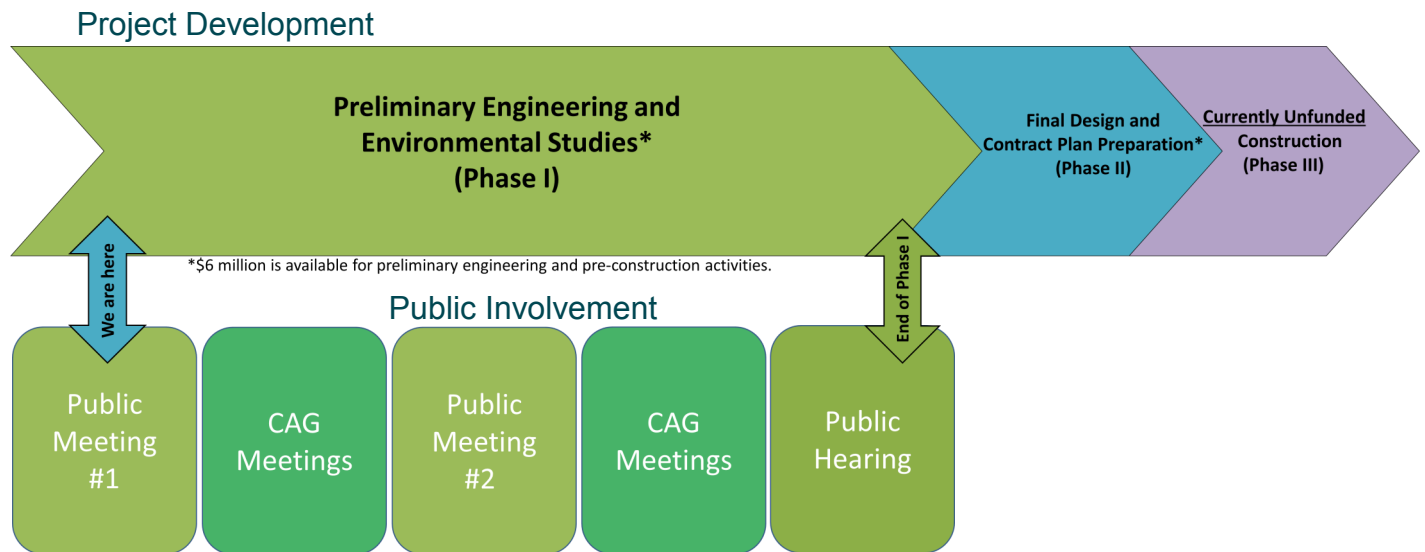


## Project Location

The project study area is located within the greater St. Louis metropolitan area between IL Route 3 and IL Route 203 in the municipalities of East St. Louis, Madison and Fairmont City in St. Clair and Madison Counties, Illinois. Construction improvements will be between IL Route 3 and IL Route 203 with a connection to Collinsville Road.

# Project Schedule

Currently, the project is in the development stage (see schedule below); detailed environmental and preliminary engineering analyses are being evaluated and reviewed. Alternatives will then be evaluated for their ability to meet the project's Purpose and Need, as well as traffic considerations, community and environmental impacts, and agency concerns and public input. Public input will be a key factor in deciding which design concept is preferred. Feedback from the public as well as data collected by the project team will be used to help develop the project Purpose and Need.



## Public Involvement

Public participation is an essential part of the Illinois Route 3 Connector Project's preliminary design and environmental assessment process. IDOT's Context Sensitive Solutions (CSS) process is being utilized to engage stakeholders and the public continuously throughout the project. CSS is an approach that seeks to draw input on project decisions from a diversity of voices in the community. CSS activities include public informational and stakeholder meetings and the Community Advisory Group (CAG). Public input will help IDOT develop an informed solution that meets engineering requirements, addresses safety and mobility, has minimal environmental impact, and reflects the values of the community.

## Community Advisory Group (CAG)

The CAG serves as a liaison between IDOT and the community by identifying transportation issues important to the community, being a conduit to share information with the community, and providing input on various elements of the study developed by the project team. The project team is a group of technical staff from IDOT and their consultants that work together to make key decisions regarding the development of this project. CAG members can express the community values to be considered with the engineering and environmental aspects at key decision-making points in the study.

Members of the Illinois Route 3 Connector Project CAG include local elected leaders, police and fire officials, residents and representatives of area businesses and organizations. These individuals were selected to represent the broad variety of interests that exist throughout the project area. They also contribute to determining the issues of concern identified in the study area.

## Apply to Join the CAG Today!

As we enter the next phase in the Illinois Route 3 Connector Project, CAG membership will evolve as different issues important to the community become known. Additional members may be added to help address these issues or previously unidentified stakeholders interests. If you are interested in serving on the CAG, please fill out a comment form with your contact information.

### Learn More

Learn more about the project at [www.dot.il.gov/](http://www.dot.il.gov/) or by contacting:

Annie Prothro  
IDOT Project Manager  
618-346-3161  
annie.prothro@illinois.gov

Buddy Desai  
CH2M HILL Project  
Manager  
314-335-3011  
buddy.desai@ch2m.com