

Project Location

The project study area is located within the greater St. Louis metropolitan area between IL Route 3 and IL Route 203 in the municipalities of East St. Louis, Madison and Fairmont City in St. Clair and Madison Counties, Illinois. Construction improvements will be between IL Route 3 and IL Route 203 with a connection to Collinsville Road.

What's Next?

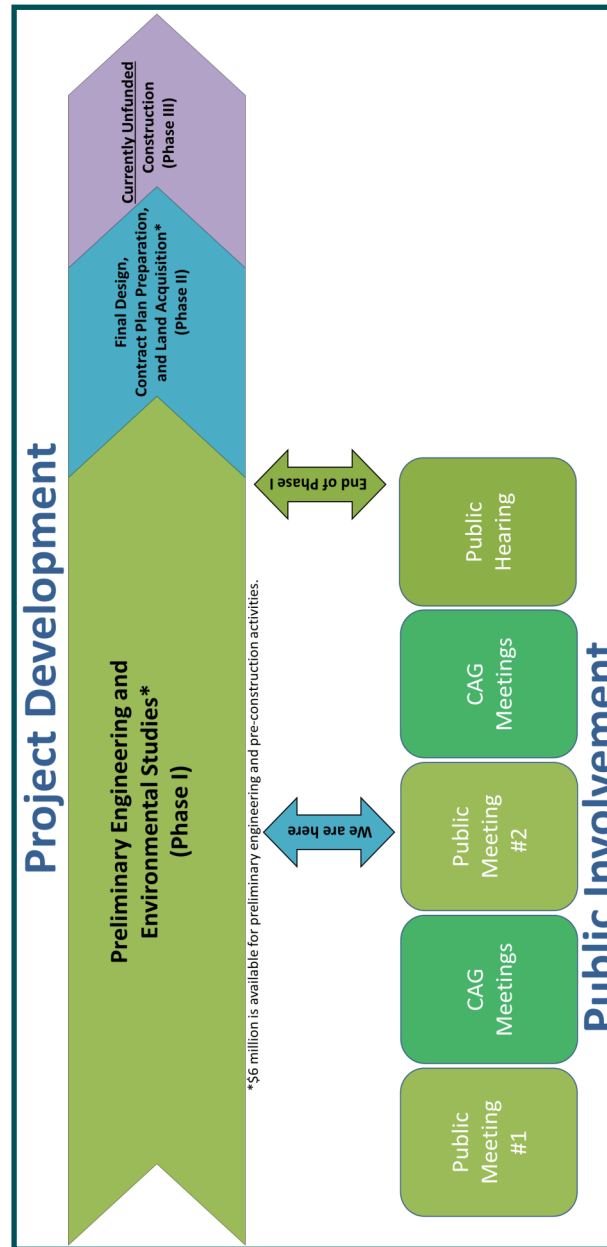
Currently, the project is in the development stage (see schedule, on back). Although \$6 million has been made available for preliminary engineering and pre-construction activities (Phases I and II), construction (Phase III) is not funded in IDOT's Multi-Modal, Multi-Year Program (MYP). Until design is refined further, construction costs will not be determined. Detailed environmental and preliminary engineering analyses are being evaluated and reviewed. Conceptual Alternatives have been developed and will be evaluated for their ability to meet the project's Purpose and Need, as well as traffic considerations, community and environmental impacts, and agency concerns and public input. Public input will be a key factor in deciding which design concept is preferred.

Learn More

Learn more about the project by contacting:

Annie Prothro, IDOT Project Manager
618-346-3161/annie.prothro@illinois.gov

Buddy Desai
CH2M HILL Project Manager
314-335-3011/buddy.desai@ch2m.com



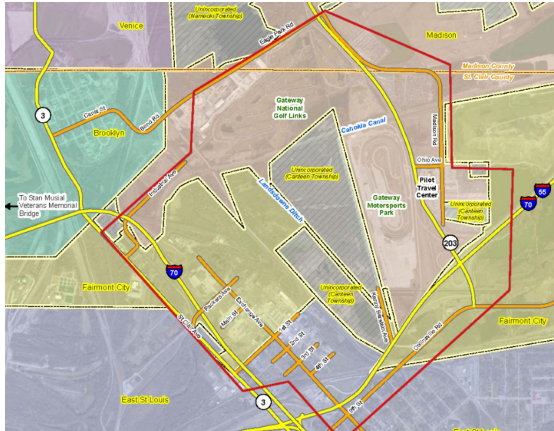
Illinois Route 3 Connector Project Public Information Meeting #2



October 2014 — The Illinois Department of Transportation (IDOT) would like to take this opportunity to share progress on the Illinois Route 3 Connector Project. This pamphlet aims to describe the proposed Purpose and Need for the project, how the initial set of Conceptual Alternatives was developed and how you can stay involved in the project.



Pat Quinn, Governor



Project Study Area

What you will see Tonight

The Conceptual Alternatives on display represent IDOT's attempt to develop initial alternatives that take the existing conditions and planned highway construction in the study area into account (such as the I-70 construction to date as well as planned construction). Each of the eight Conceptual Alternatives displayed include a connection at IL Route 203 and IL Route 3 and a connection to Collinsville Road.

The alternatives shown on the maps at tonight's meeting are high-level concepts intended to address the needs in the study area. These initial concepts have been developed to minimize potential impacts to businesses, residences and environmental resources while improving travel times through the study area by providing bridges over the railroads and providing improved connectivity between IL Route 3, IL Route 203, and Collinsville Road.

Transportation impacts every community, big or small. It is important to us that stakeholders are given the opportunity to review and comment on our transportation planning processes.

These in turn, should help reduce delays and improve connectivity for motorists and emergency responders. Input from the public and the Community Advisory Group (CAG) may result in changes to the alternatives as the Conceptual Alternatives are refined and developed in more detail.

Your input on the Conceptual Alternatives is valuable. As you review the displays, please consider:

- Do you have suggested revisions to the Conceptual Alternative?
- Are there any defects (fatal flaws) to the Conceptual Alternative that makes implementation impossible or undesirable?
- If you like or dislike the Conceptual Alternative please tell us why?
- Are there other alternatives that should be considered?

After input from CAG Meeting #6 (held October 3, 2014 to share the Conceptual Alternatives with CAG members) and tonight's public meeting is evaluated, four key questions about each of the Conceptual Alternatives will be answered as we move forward:

- What are the physical engineering requirements of the roadway?
- What are the social and/or environmental impacts of each proposed alternative?
- Is the alternative prudent and feasible?
- Which solution best addresses the problem statement and ultimately the approved Purpose and Need?

To answer these questions, each of the Conceptual Alternatives will be analyzed and evaluated on a variety of measures, including how well they: improve traffic flow/network continuity, reduce railroad delay, accommodate truck traffic, enhance multi-modal opportunities, accommodate planned/future development, reduce environmental impacts and how feasible/realistic the alternative would be to construct, including construction costs. At the next public meeting, IDOT will present the results of the evaluation and suggest alternatives to be carried forward for detailed evaluation.

How can I get Involved?

An important part of the Illinois Route 3 Connector Project is participation by those who have a stake in the study's outcome. We have two main objectives for this participation:

1. To educate everyone about the project and the study developments, and
2. To *be educated* by you about your community, its important resources, qualities, issues, and problems and your vision for the project.

We encourage all who are interested to take part in the project. It is only through the participation of those who live and work in the area that the best possible project can be achieved.

There are several ways for these objectives to be achieved over the course of the Project, ***including the following:***

- **Community Advisory Group** → Speak with your community reps!
- **Project Website** → Coming Soon!
- **Project Newsletters** → Learn more about project progress!
- **Public Meetings** → Will be held at key milestones!
- **Media** → Watch your local papers for articles!
- **Speaker's Bureaus** → Invite us to come speak to your group!

