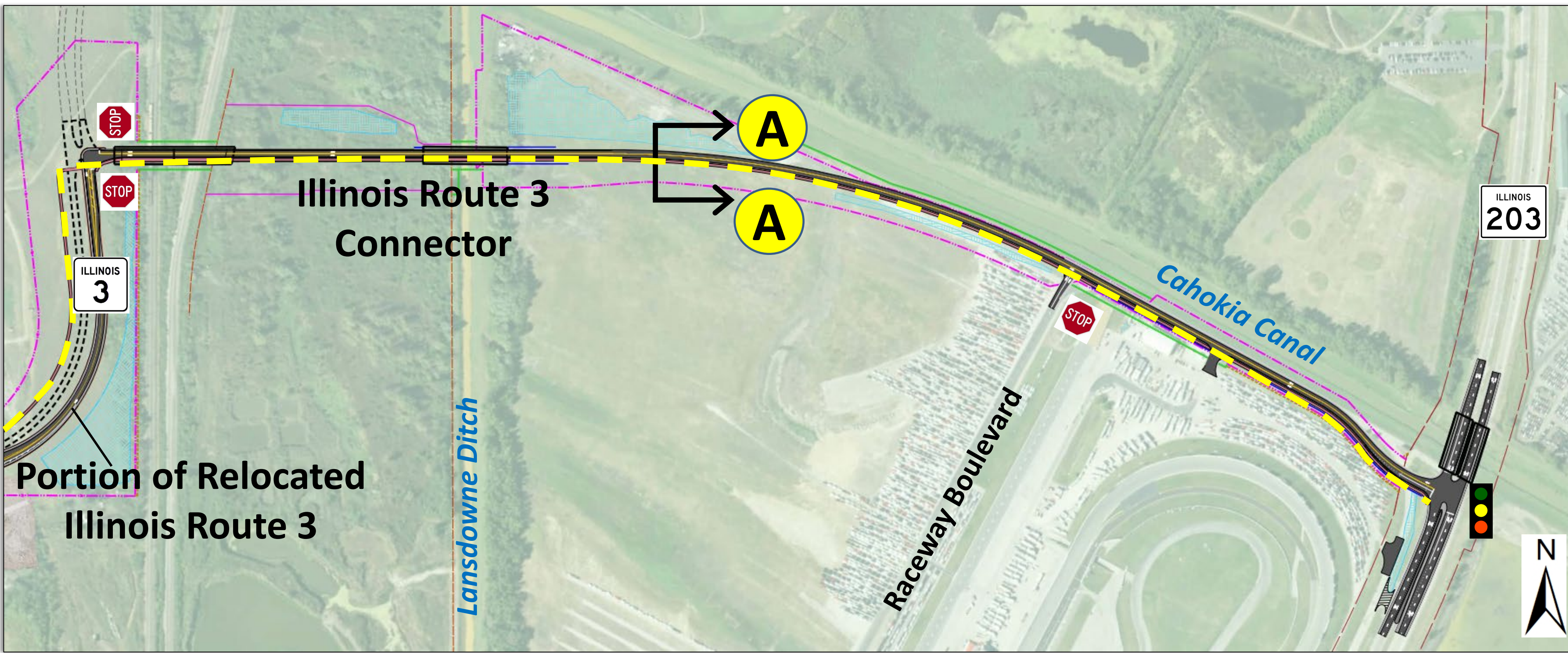
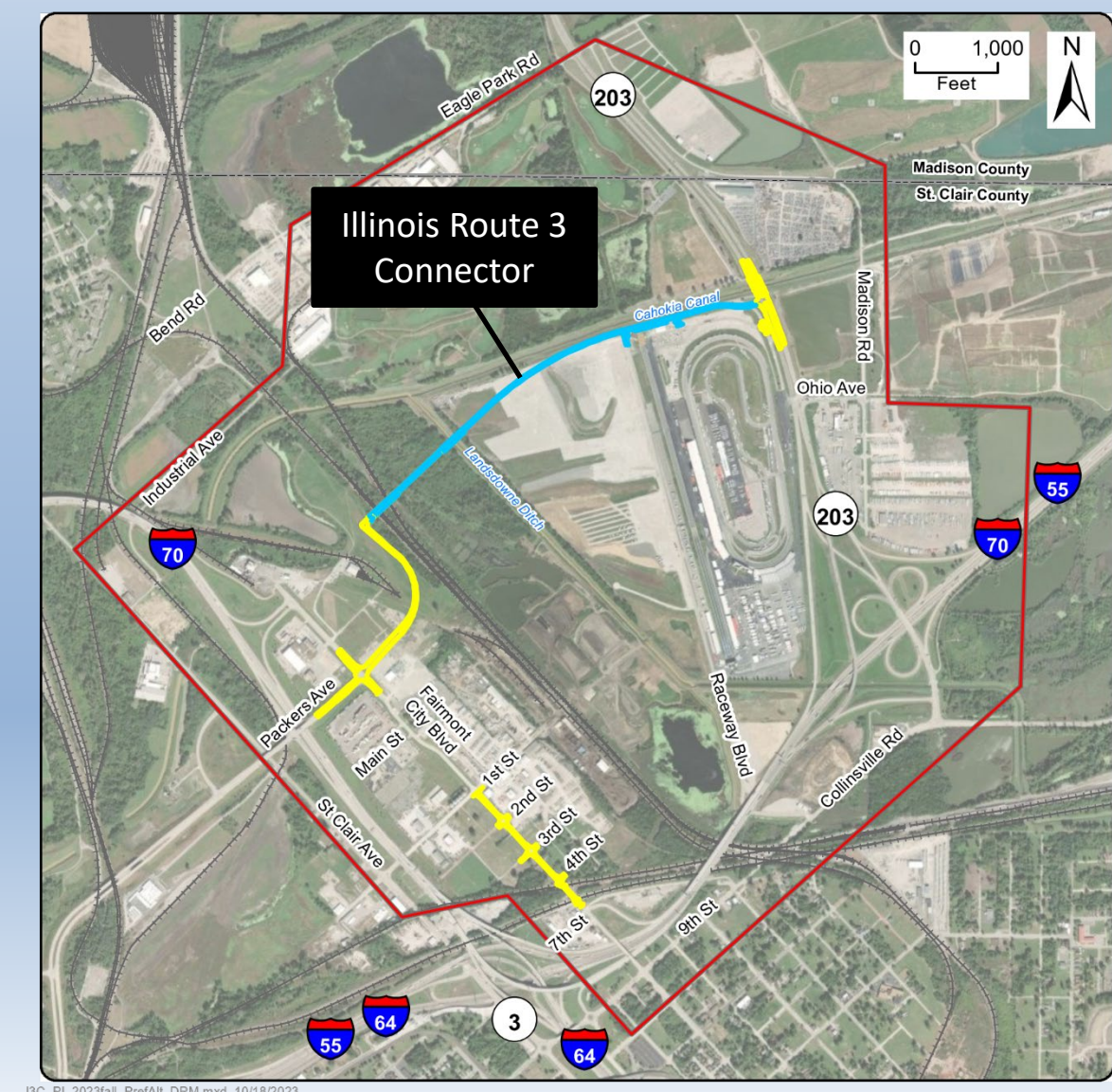




Preferred Alternative Illinois Route 3 Connector

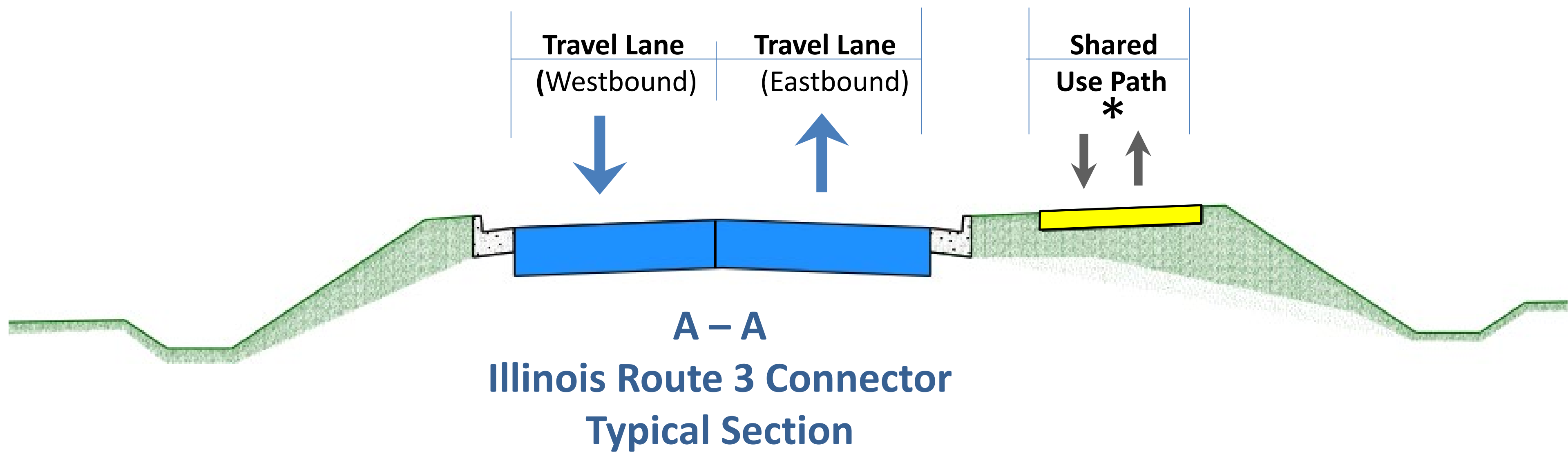
Relocated Illinois Route 3 to Illinois Route 203



The Illinois Route 3 Connector will extend eastward from Relocated Illinois Route 3, bridge over the existing railroads and the Lansdowne Ditch, and terminate at a new signalized intersection with Illinois Route 203. These enhancements include replacement of two structures along Illinois Route 203 over the Cahokia Canal.

Design Features

- One 13-foot-wide travel lane in each direction
- A 10-foot-wide shared use path* along the south side
- Combination of open and closed drainage systems designed to channel roadway runoff into open ditches and storm sewers
- Retaining wall east of Raceway Boulevard to minimize impacts to WWTR property



* Sidewalks and paths (shown as yellow dashed line) are dependent on local agency acceptance of maintenance.