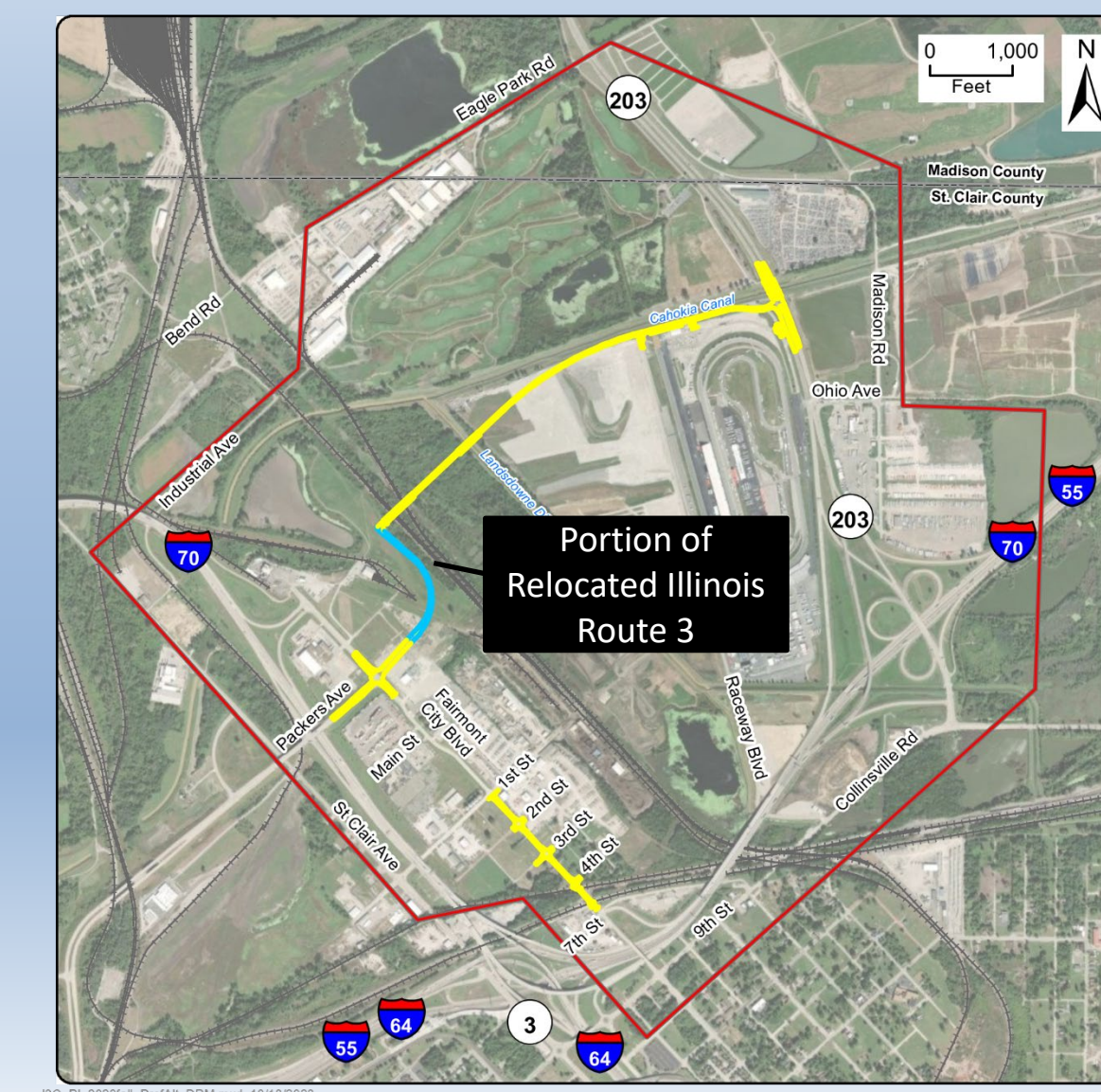




Preferred Alternative

Portion of Relocated Illinois Route 3

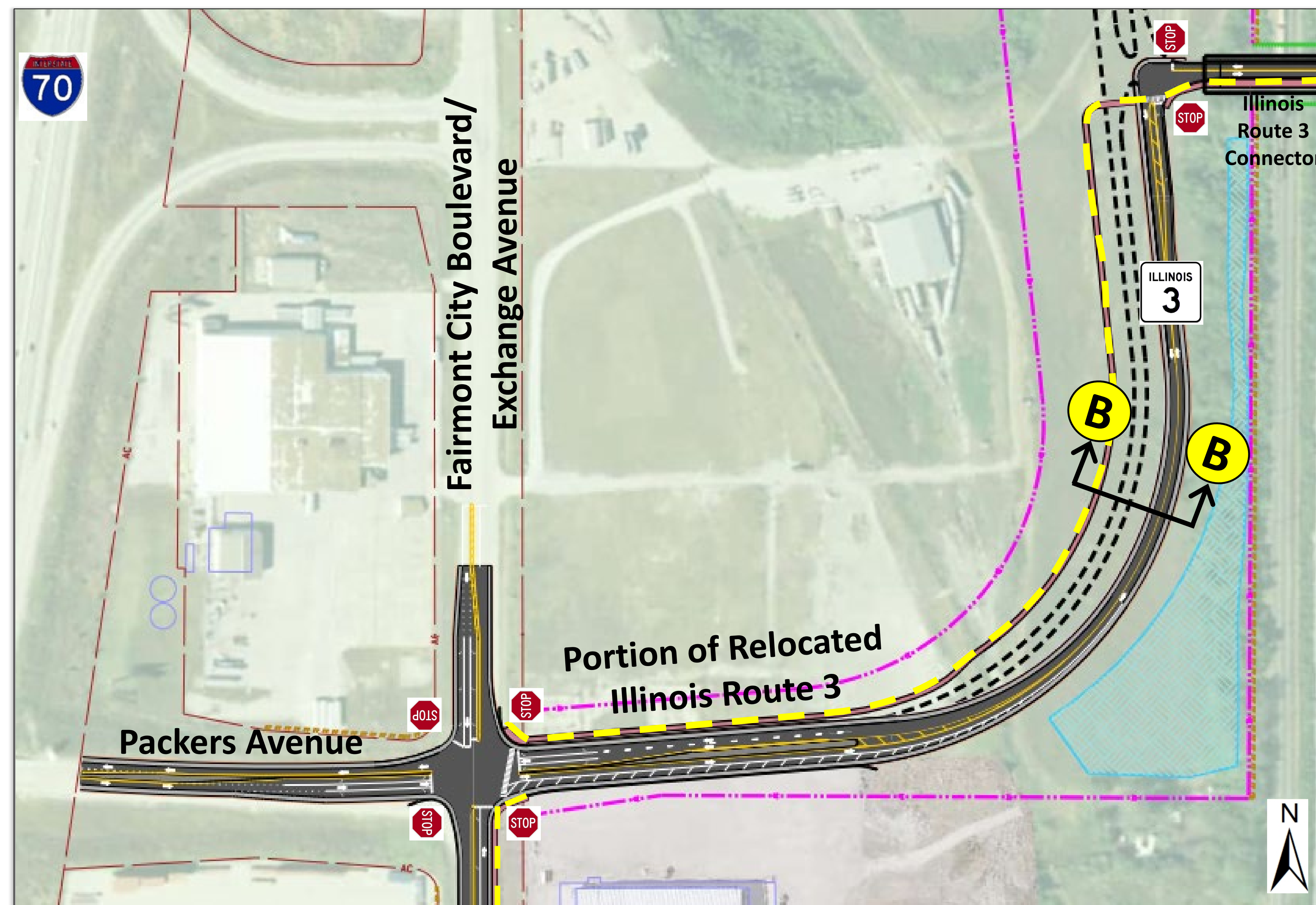
Fairmont City Boulevard to Illinois Route 3 Connector



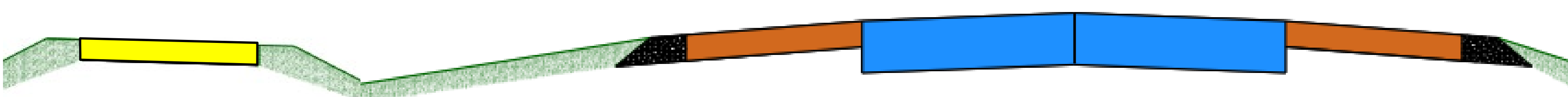
A continuation of Relocated Route 3 will extend from Packers Avenue to the new Illinois Route 3 Connector. The initial construction will feature a two-lane roadway with a shared use path. The design is compatible with a potential future extension of Relocated Illinois Route 3 to the north.

Design Features

- One 12-foot-wide travel lane in each direction
- A 10-foot-wide shared use path* on the northwest side of Relocated Illinois Route 3
- Roadway shoulders designed to channel roadway runoff into open ditches on both sides of the road



Shared Use Path *	width varies to accommodate a potential four-lane expansion	Travel Lane (Southwest)	Travel Lane (Northeast)
↓ ↑		↓	↑



B-B
Portion of Relocated Illinois Route 3
Typical Section

* Sidewalks and paths (shown as yellow dashed line) are dependent on local agency acceptance of maintenance.