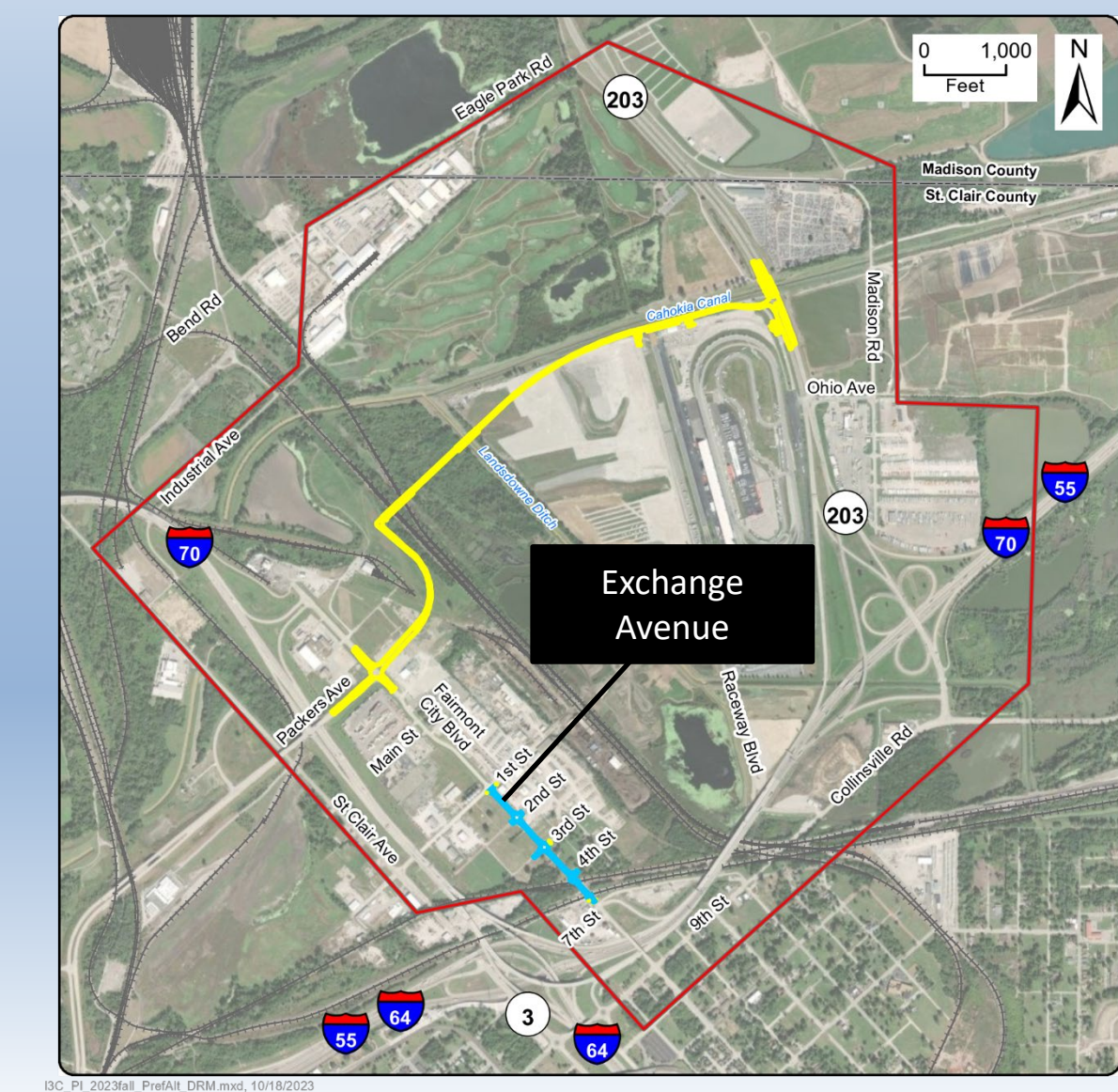


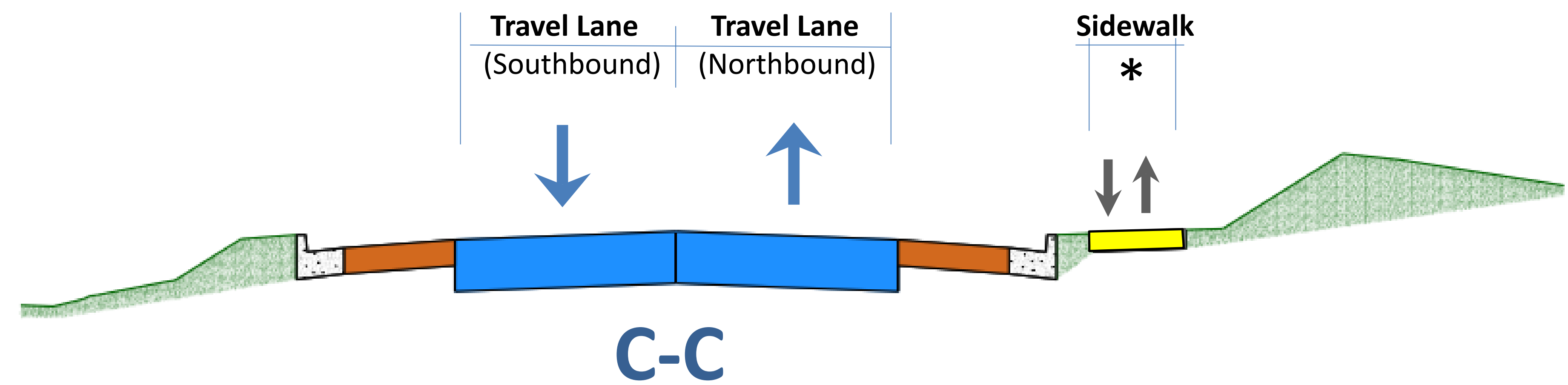
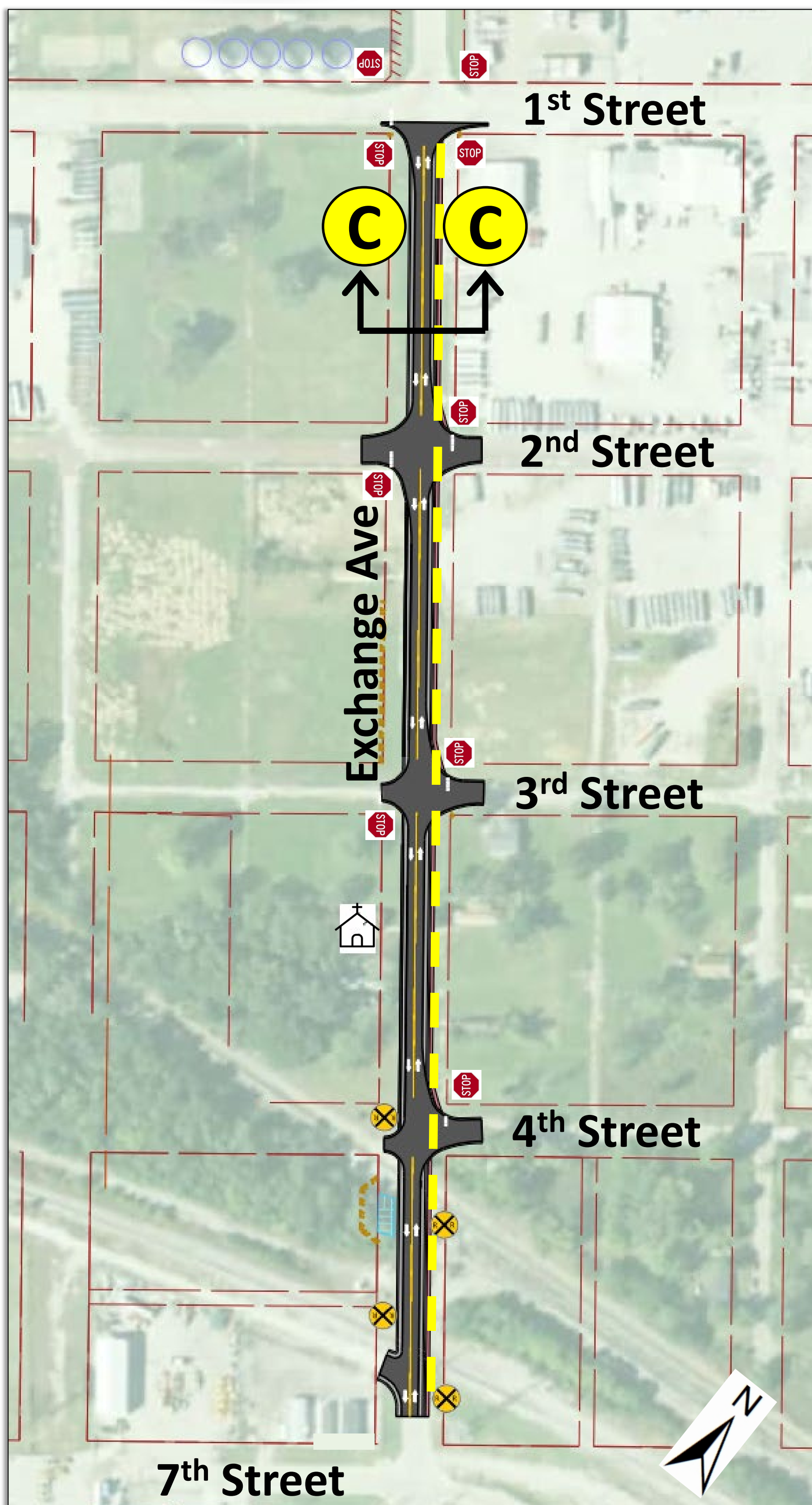


# Preferred Alternative Exchange Avenue

1<sup>st</sup> Street to 7<sup>th</sup> Street



Improvements include complete reconstruction of the two-lane roadway, incorporating a new sidewalk along the eastern side, and installing curb and gutters and closed storm sewers within existing right-of-way. The existing at-grade railroad crossings will be retained.



**Exchange Avenue  
Typical Section**

### Design Features

- A 12-foot-wide travel lane in each direction with paved shoulders and curb and gutter
- A 5-foot-wide sidewalk\* on the east side of the roadway
- Roadway shoulders, curbs, and gutters designed to channel roadway runoff into new storm sewers

\* Sidewalks and paths (shown as yellow dashed line) are dependent on local agency acceptance of maintenance.