

# I-64 Under IL Route 111

## PUBLIC INFORMATIONAL MEETING

Interstate 64 (I-64) under Illinois Route 111  
in Washington Park, IL

**Thursday, August 8, 2019**

**4:00 p.m. - 7:00 p.m.**

Washington Park Village Office  
5218 N. Park Drive / East St. Louis, IL 62204

Welcome! The Illinois Department of Transportation (IDOT), in cooperation with the Federal Highway Administration, is holding a Public Informational Meeting to present the project concerning improvements needed for the I-64 under IL Route 111 bridge and interchange. All interested parties are welcome to attend at any point during the allocated time. This meeting is being held in an open house format to allow informal discussions between the public and the Project Study Group (PSG) members. No formal presentation will be given.

### Purpose of Tonight's Meeting

The purpose of the meeting is to introduce the project by presenting information and receiving comments. This meeting will address the need for replacing the bridge carrying IL Route 111 over I-64 and interchange improvements. Exhibits, drawings and aerial maps are available for review. IDOT staff will also be available to answer questions. Comments can be submitted at the Public Informational Meeting tonight, in writing or electronically. Written correspondence regarding this project can also be mailed to IDOT at the address in the article to the right.

## What is the I-64 Under IL Route 111 Project?

The Illinois Department of Transportation (IDOT), in cooperation with the Federal Highway Administration (FHWA), is conducting a preliminary engineering and environmental study of I-64 under IL Route 111 in Washington Park, Illinois. This study will explore options for replacing the IL Route 111 bridge over the interstate and for potential reconfiguration of the I-64 and IL Route 111 interchange. The preliminary engineering and environmental study is known as the Phase 1 study. During this phase public involvement, data collection, route surveying, a drainage study, crash analysis, a traffic management plan, and an intersection design study will be conducted. Alternatives will also be developed to improve the bridge condition and reduce the number of structure crashes. A project report will be developed that documents this process.

If you have questions or comments about the project or public involvement, please contact Matt Meyer, Project Studies Engineer at 618-346-3160 or by email at [Matthew.Meyer@illinois.gov](mailto:Matthew.Meyer@illinois.gov). Or, you can mail:

Illinois Department of Transportation  
Attn: Mr. Matthew Meyer  
1102 Eastport Plaza Drive  
Collinsville, IL 62234



## Overview & Scope

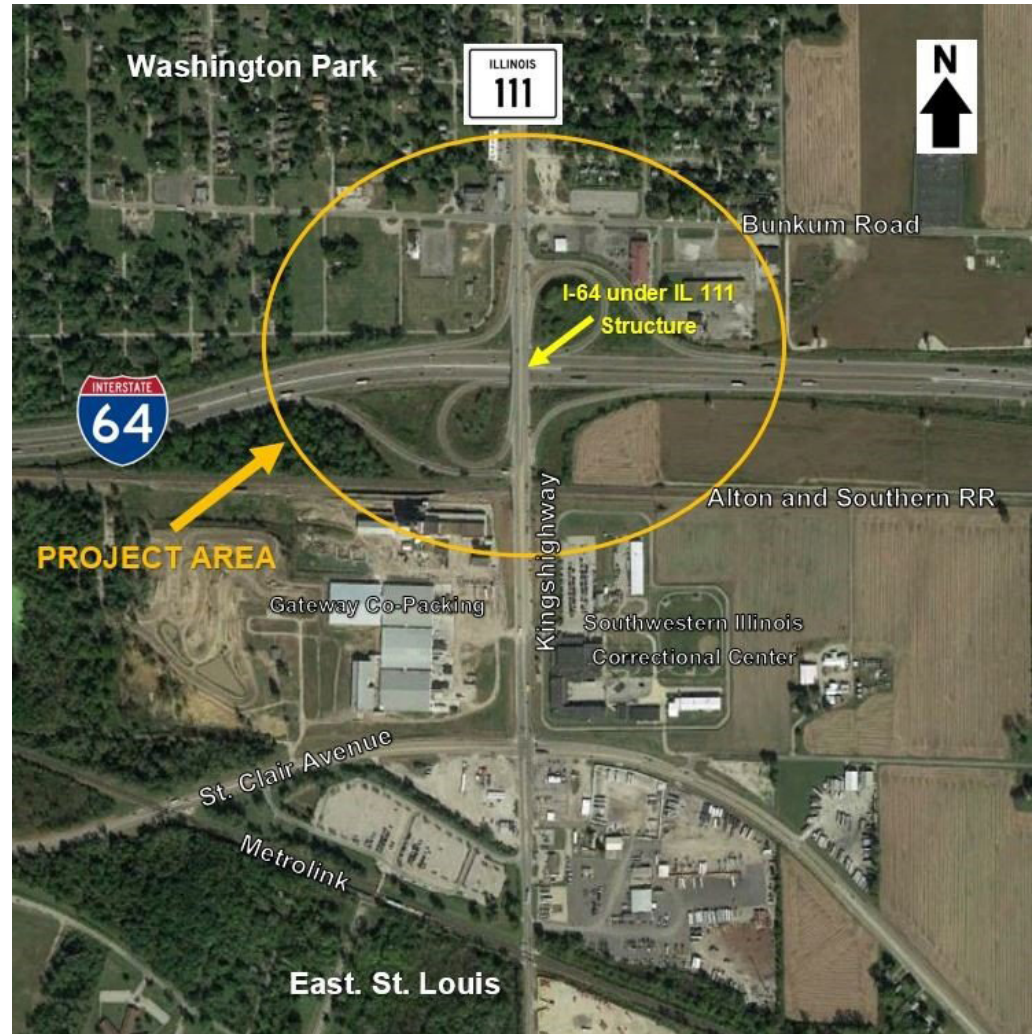
The IL Route 111 bridge over I-64 will be replaced and the interchange may be modified. The project's scope will be determined during the Phase I public involvement process. Context Sensitive Solutions (CSS) will be utilized for the project's public involvement.

## Crash History

Crash history in this location indicates that the clearance distance between I-64 and the structure that carries IL Route 111 over I-64 is not sufficient. This structure has been struck by tractor trailers and equipment being hauled by trucks traveling on I-64.

## Funding Status

All engineering and construction is included in the Department's Fiscal Year 2019-2024 Proposed Highway Improvement Program.



## Interstate 64 under IL Route 111 Project Time Line

We are here



### Phase I

Public Involvement, Preliminary Design and Environmental Study  
*Estimated Time: 24 Months*

### Phase II

Final Design, Construction Bid and ROW Acquisition Documents  
*Estimated Time: 24 Months*

### Phase III

Construction of the Project  
*Estimated Time: 24-36 Months*

## Public Involvement - Context Sensitive Solutions (CSS)

Context Sensitive Solutions (CSS) will be utilized for the public involvement for this project. An inclusive, responsive public involvement program is an essential part of this project. The CSS process, developed by IDOT, helps ensure that any recommended transportation improvements will enhance the quality of life for those who have a stake in the system. This collaborative approach also preserves scenic, aesthetic, historic, and environmental resources while maintaining safety and mobility. For more information on CSS please visit: <http://www.idot.illinois.gov/transportation-system/transportation-management/context-sensitive-solutions/index>

## Project Study Group (PSG)

This project is sponsored by the Illinois Department of Transportation (IDOT), in cooperation with the Federal Highway Administration (FHWA). IDOT has hired a consultant team led by Hanson Professional Services, Inc. to assist with environmental studies, preliminary engineering and design and stakeholder involvement using the CSS process. The role of the PSG is to oversee the development of the study, make decisions on the project design and consider input from the public in making those decisions.

## Get Involved / Provide Comments

Throughout Phase 1 of the I-64 Under IL Route 111 project, there will be opportunities for you to provide feedback. If you are interested in taking part in the public involvement for this project, or have any questions about the public involvement for this project, please contact Matthew Meyer at (618) 346-3160 or by e-mail at [matthew.meyer@illinois.gov](mailto:matthew.meyer@illinois.gov). Comment forms will be available at this meeting are included in this handout. They can be returned to the comment form box when completed, or mailed to Matthew Meyer at 1102 Eastport Plaza Drive, Collinsville, IL 62234. The comments will be used by the PSG to help develop the project design.

## Future Public Involvement

The second Public Meeting is anticipated to be held in the winter of 2020. The preliminary design of the new bridge and interchange will be available at the next public meeting for public comment. The website will be updated periodically as the project progresses. If you signed in at the meeting tonight, you will be included on the project mailing list for future updates. Also, you may visit the project website at [idot.illinois.gov/projects/I-64-under-IL-111](http://idot.illinois.gov/projects/I-64-under-IL-111) and click on the "Public Involvement" tab for notices. Look for announcements in the local newspaper and on roadway message boards. If you have questions, contact Matthew Meyer at (618) 346-3160 or by e-mail at [matthew.meyer@illinois.gov](mailto:matthew.meyer@illinois.gov).

## What's Next?

The PSG will take input from the public comment forms to develop a project design that fits the context of the community. A number of public involvement activities will be scheduled during this phase of the project. Public involvement meetings will be conducted to solicit input from the public regarding issues to be addressed by the project and input on a recommended alternative. After Phase I has concluded, Phase II can begin, which generally takes 24 months.

## Resources

The website will be updated periodically as the project progresses. The Illinois Department of Transportation (IDOT) wishes to thank you for your support and patience.

# Frequently Asked Questions

## 1. **Why is this project being done?**

The existing bridge that carries IL Route 111 over I-64 in Washington Park, Illinois was built in 1973, making it nearly 50 years old and reaching the end of its useful service life. Much of the original construction remains in place, along with nearly 25% of the current deck having been patched in recent years. The clearance between the bridge and the interstate is 14'-2" which is well below the current minimum of 16'-0". Thus, on numerous occasions, trucks and equipment hauled by trucks have struck the bridge resulting in frequent repairs.



## 2. **When will this project be built?**

IDOT plans, designs and constructs projects in three phases. Phase I involves preliminary engineering, which includes data collection, public involvement, an environmental analysis, proposed geometry and right-of-way requirements. This can take approximately 24 months. Phase II focuses on preparation of contract plans and specifications, and land acquisition. This can take approximately 24 months. Phase III is the actual construction of the project. I-64 under IL Route 111 is currently in Phase I.

## 3. **Will IL Route 111 or the interchange be closed during construction?**

This question cannot be answered at this time since the project design has not been developed yet. However, efforts will be made to keep IL Route 111 open to traffic and minimize inconvenience to the motoring public. IDOT is currently at the early stages of Phase I for this project. As more detailed information becomes available, we will update the community accordingly.

## 4. **Is there funding available to build this project?**

All engineering and construction costs for this project are included in the Department's Fiscal Year 2019-2024 Proposed Highway Improvement Program (MYP). \$3 million is included in the MYP for Phase II engineering and land acquisition. \$25.5 million is included in the MYP for construction utility adjustments and construction engineering.

## 5. **Will property be acquired for this improvement?**

It is too early in the Phase 1 process to determine if any right-of-way is needed from properties located in the project study area.