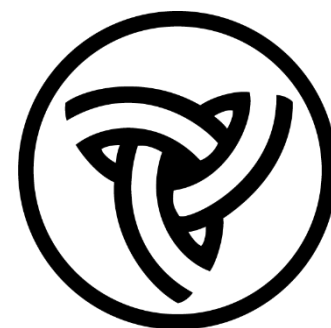


WELCOME!

PUBLIC INFORMATIONAL MEETING



Interstate 64 under IL Route 111



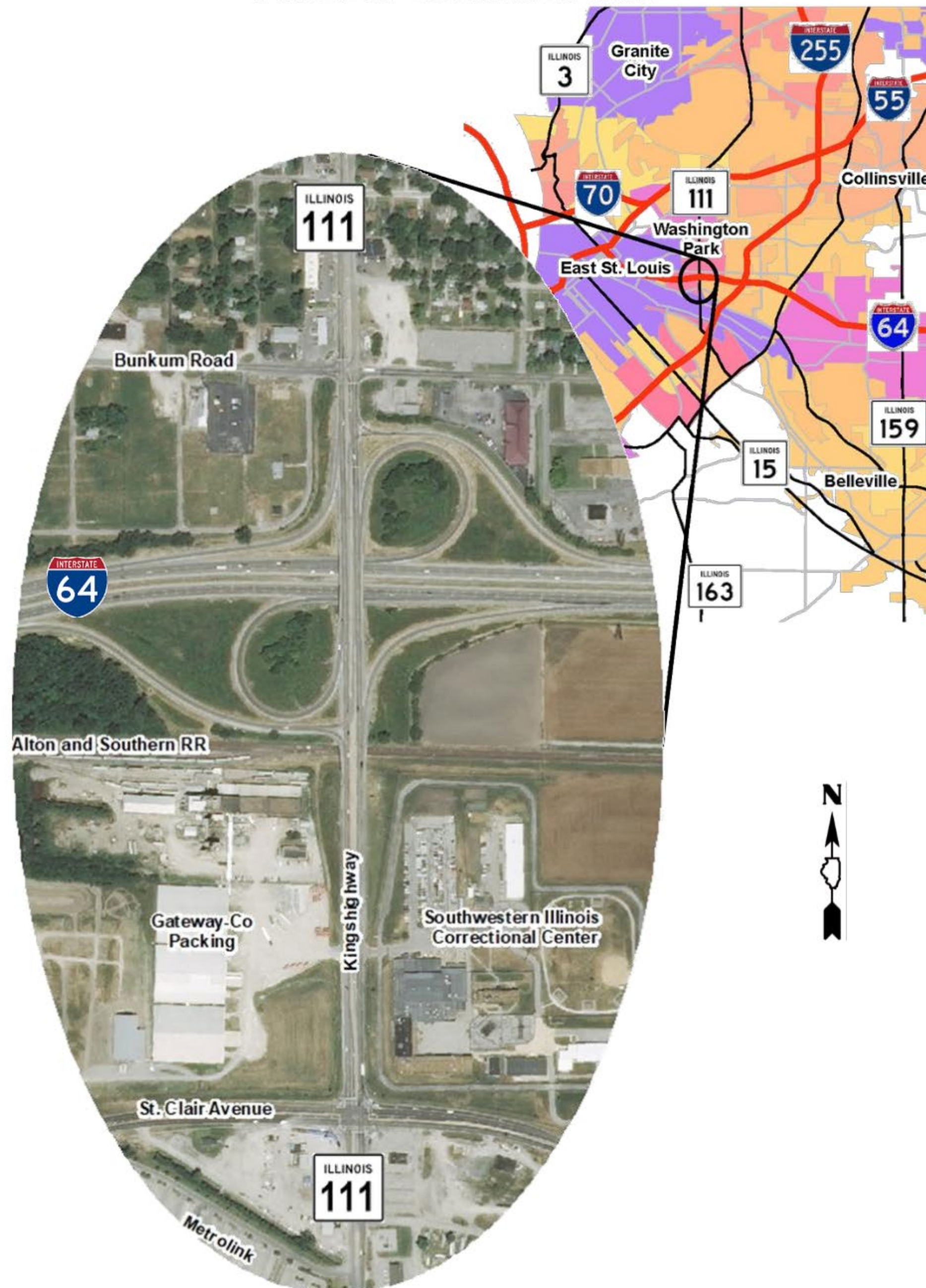
Illinois Department
of Transportation



Interstate 64 under IL Route 111



PROJECT LOCATION MAP





Interstate 64 under IL Route 111



PURPOSE OF PROJECT

- The purpose of this project is to address bridge deficiencies, improve traffic operations and safety, and improve mobility at the I-64 / IL Route 111 interchange.
- Addressing these deficiencies would allow I-64 to continue to serve as a vital link to the interstate highway system in the St. Louis metropolitan area and improve access to the Village of Washington Park and surrounding communities.





Interstate 64 under IL Route 111



NEED FOR THE PROJECT

- The existing IL Route 111 bridge is nearly 50 years old.
- The existing condition of the bridge has deteriorated.
- The clearance between the bridge and I-64 is less than current standards.
 - The current clearance is 14'-2"
 - Required clearance is 16'-0" minimum and a desired clearance of 16'-9".
 - Trucks have struck the bridge numerous times.



WWW.IDOT.ILLINOIS.GOV/PROJECTS/I-64-UNDER-IL-111



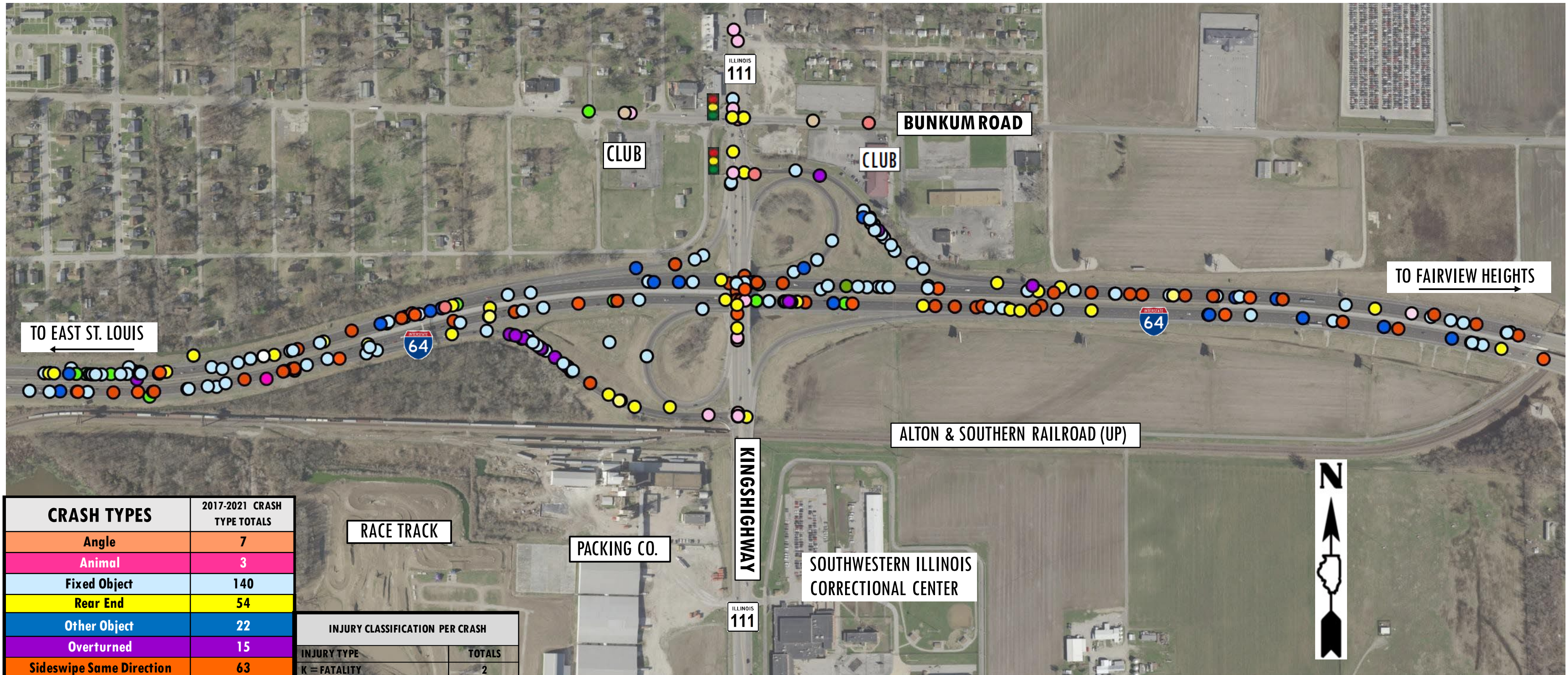
Illinois Department
of Transportation



Interstate 64 under IL Route 111



CRASH LOCATION MAP



CRASH TYPES	2017-2021 CRASH TYPE TOTALS
Angle	7
Animal	3
Fixed Object	140
Rear End	54
Other Object	22
Overtaken	15
Sideswipe Same Direction	63
Turning	31
Head on	3
Other Non-Collision	16
Other	5

INJURY CLASSIFICATION PER CRASH	
INJURY TYPE	TOTALS
K = FATALITY	2
TYPE A = DISABLING INJURY	14
TYPE B = EVIDENT INJURY	44
TYPE C = POSSIBLE INJURY	18
PROPERTY DAMAGE ONLY	281
TOTAL	359



Illinois Department of Transportation

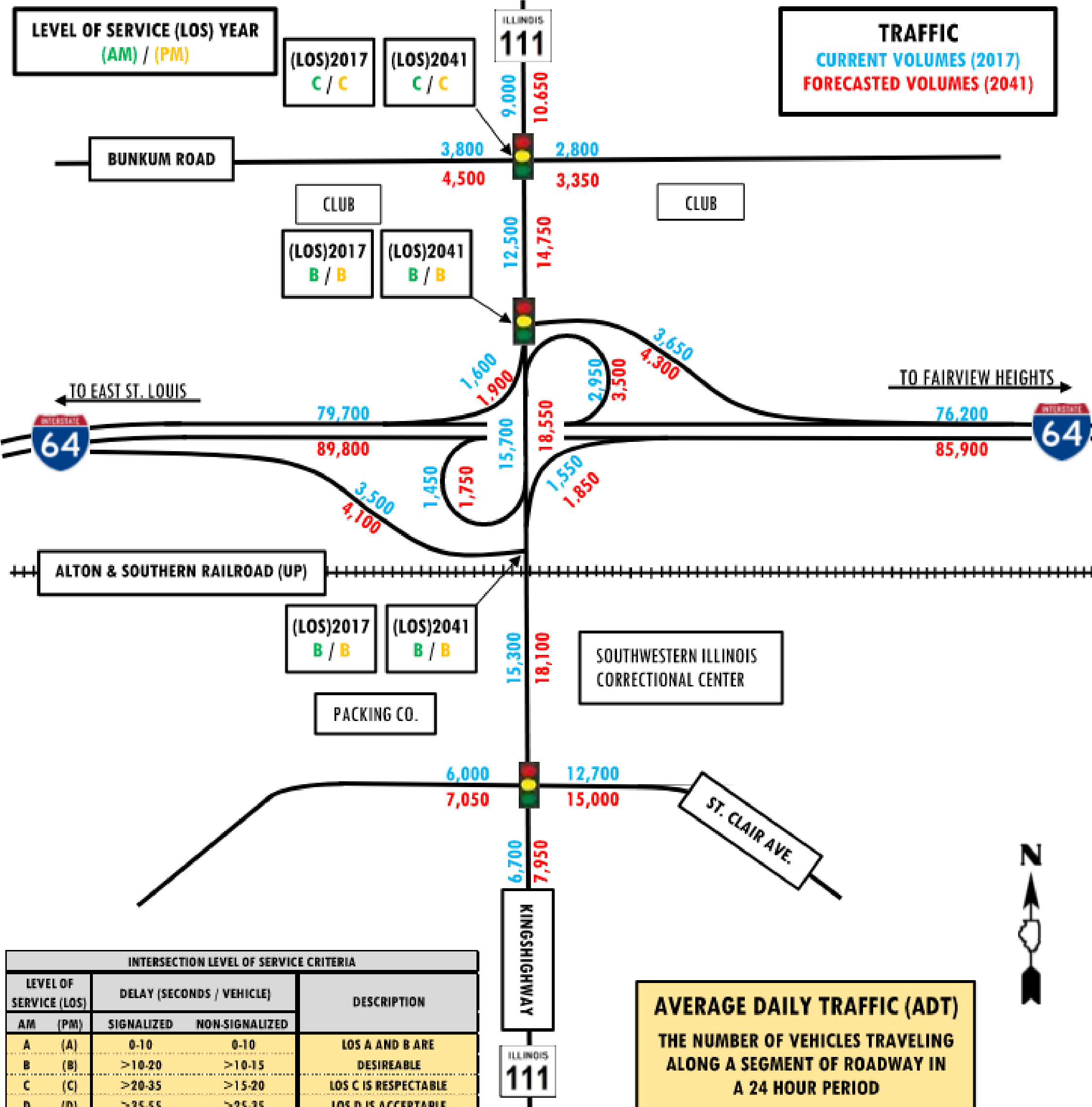
WWW.IDOT.ILLINOIS.GOV/PROJECTS/I-64-UNDER-IL-111



Interstate 64 under IL Route 111

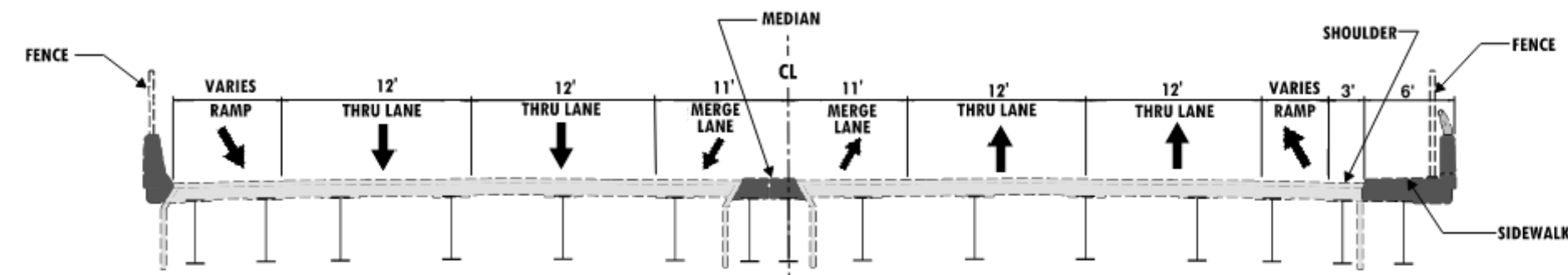


AVERAGE DAILY TRAFFIC

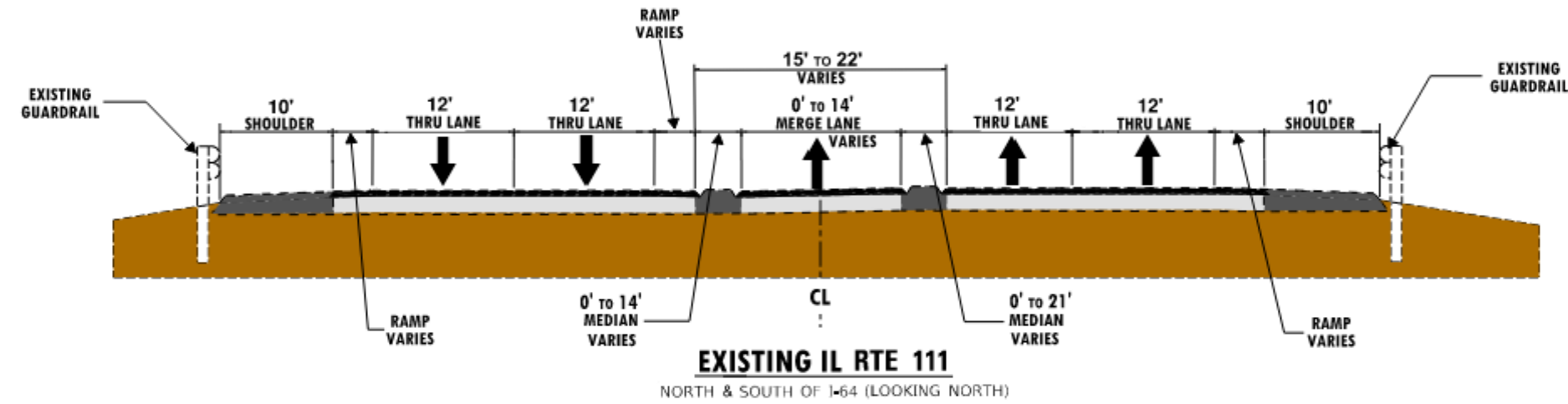




IL ROUTE 111 EXISTING TYPICAL SECTIONS

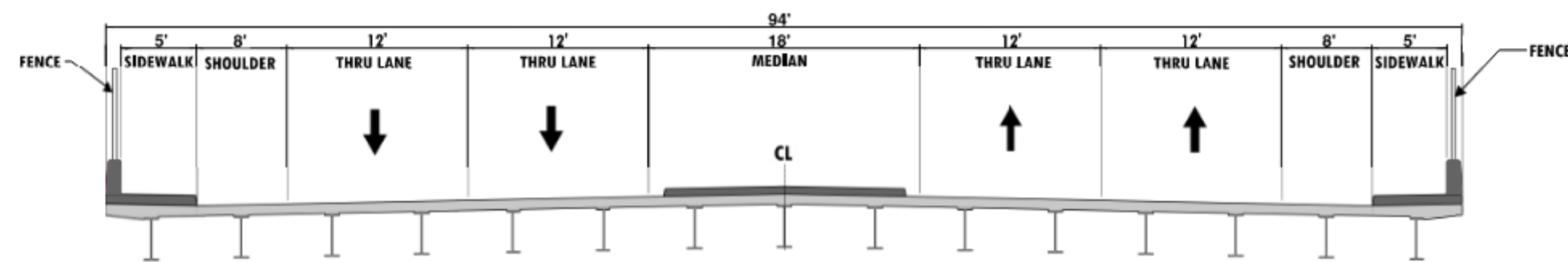


EXISTING IL RTE 111 BRIDGE OVER I - 64
(LOOKING NORTH)



EXISTING IL RTE 111
NORTH & SOUTH OF I-64 (LOOKING NORTH)

IL ROUTE 111 CONCEPT BRIDGE TYPICAL SECTION



CONCEPT IL RTE 111 BRIDGE OVER I - 64
(LOOKING NORTH)

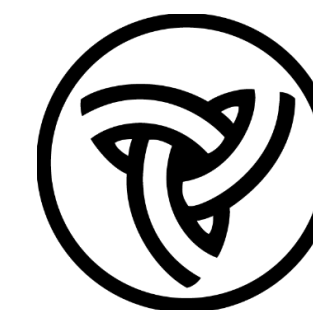


Interstate 64 under IL Route 111



CONCEPT INTERCHANGE

- IDOT developed an interchange concept that will meet the project purpose and need to:
- Address Bridge Deficiencies,
- Improve Traffic Operations and Safety, and
- Improve Mobility at the Interchange.
- Addressing these issues will allow for this interchange to serve as a vital link to the interstate system in the St. Louis metropolitan area.
- Access to the Village of Washington Park and surrounding communities will also be improved.
- Any conceptual interchange designs would result in the relocation of existing human remains from the right-of-way impacted by the project.

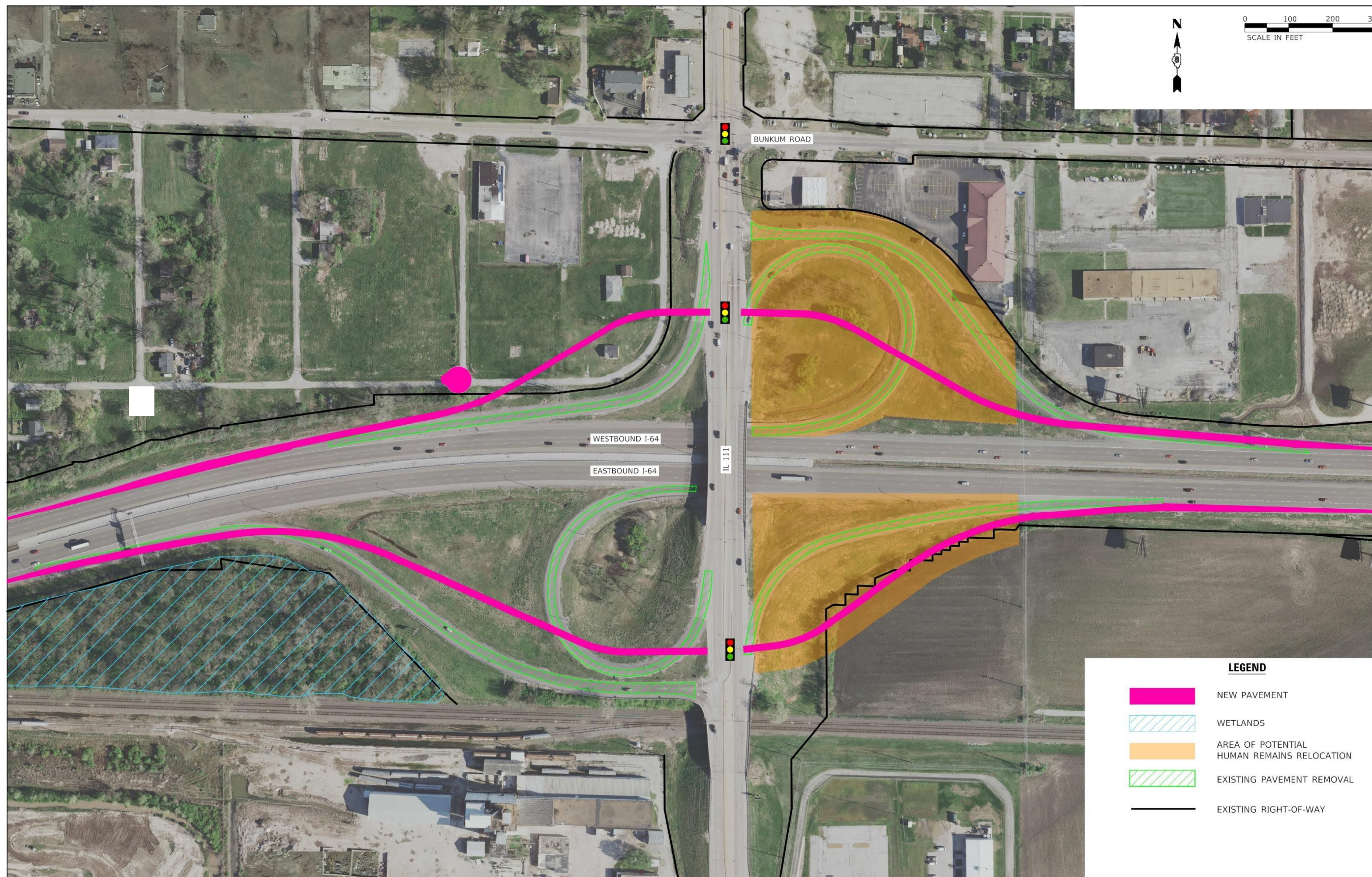




Interstate 64 under IL Route 111



PROPOSED INTERCHANGE CONCEPT



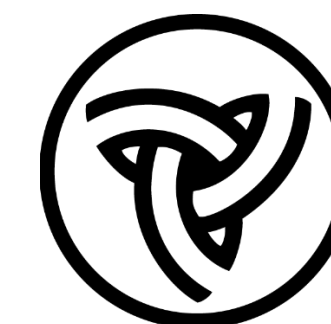


Interstate 64 under IL Route 111



FIRST PUBLIC MEETING

- Held August 8, 2019, at Washington Park Village Office Senior Building.
- Introduced project and study area.
- 22 attendees, 11 comments submitted.
- Over half of comments received requested safe pedestrian and bike facilities.
- Comment identified presence of former cemeteries at project location.



Illinois Department
of Transportation



Interstate 64 under IL Route 111



FORMER CEMETERIES AT PROJECT LOCATION



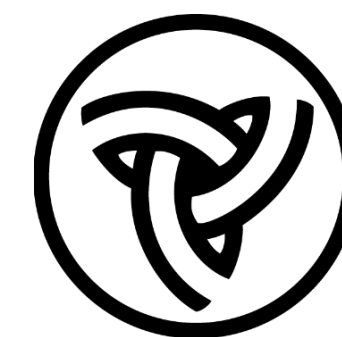


Interstate 64 under IL Route 111



CEMETERY RELOCATION PROCESS

- Following the first public meeting, IDOT conducted background research on the former Douglas-Lawnridge and St. Clair County Cemeteries in the northeast and southeast quadrants of the interchange site.
- IDOT coordinated with the Illinois State Archeological Survey (ISAS) and the Illinois State Burial Coordinator.
- ISAS investigates, preserves, and interprets the archaeological heritage of Illinois.
- The Illinois State Burial Coordinator provides guidance for the Human Skeletal Remains Protection Act (20 ILCS 3440).
- Upon completion of ISAS' archaeological work, it appears likely that some burials within the interchange's footprint had not been relocated before the interstate's construction in 1968.
- Graves from Douglas-Lawnridge and St. Clair County Cemeteries were moved to Booker T. Washington (closed) and Sunset Memorial Garden (renamed to Sunset Garden of Memory Cemetery) in 1968.



Illinois Department
of Transportation

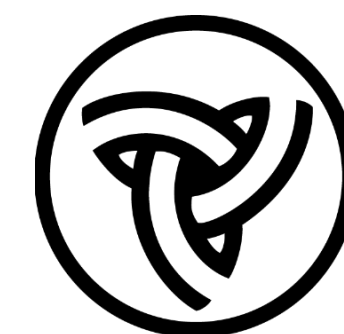


Interstate 64 under IL Route 111



CEMETERY RELOCATION PROCESS

- Illinois Department of Transportation, Federal Highway Administration, Illinois Department of Natural Resources and the State Burial Coordinator collaborated and determined the best course of action is to locate and then relocate any additional remains found within the project footprint.
 - Professional archeologists will be used to locate any remains within the project footprint.
 - This work will occur concurrent with the interchange construction.
 - IDOT will secure a location for the reinterment.
 - Possibly Sunset Garden of Memory Cemetery or similar location.



Illinois Department
of Transportation

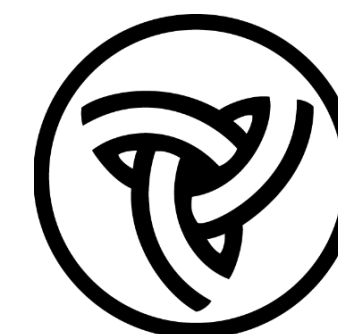


Interstate 64 under IL Route 111



RELOCATION SITE AND COMMEMORATION PROCESS WE NEED YOUR INPUT!

- How should the relocated remains be memorialized?
- Should the remaining burials be relocated to Sunset Garden of Memory Cemetery, where the previous burials were relocated? What are your thoughts?
- Please provide your input on the comment form provided, or at the project website shown below.



Illinois Department
of Transportation



Interstate 64 under IL Route 111



CONTEXT SENSITIVE SOLUTIONS (CSS)

- An approach to transportation project development that engages stakeholders early and often, especially before major decisions are made.
- Goal is to create transportation projects that not only address safety and mobility, but that also seek to preserve or enhance an area's scenic, economic, historic, and natural characteristics – “quality of life” issues.
- “Context” includes all the elements related to the people and place where a project is located:
 - Visible elements, such as environmental or historic resources.
 - Invisible elements, such as community values, traditions, and expectations.
 - The input of people who live and work in an area helps the Illinois Department of Transportation (IDOT) understand these elements.
- IDOT will utilize the CSS process to educate stakeholders about the study and the study process, and to receive input and feedback for the duration of the study.
- IDOT's goal for this study is to understand stakeholder needs and concerns about transportation and mobility in the area of the Interstate 64 interchange at Illinois Route 111.
- More information on IDOT's CSS process can be found at:
www.idot.illinois.gov/transportation-system/transportation-management/context-sensitive-solutions/index



Interstate 64 under IL Route 111



PROJECT TIMELINE

We are here





Interstate 64 under IL Route 111



QUESTIONS / COMMENTS

- TALK TO REPRESENTATIVES HERE TONIGHT
- FILL OUT A COMMENT FORM AND LEAVE IT WITH US
- TAKE A COMMENT FORM HOME AND MAIL IT TO US
- EMAIL ANY COMMENTS TO Matthew.Meyer@Illinois.gov



Illinois Department of Transportation

Phase I Services for I-64/IL Route 111 Public Meeting
August 9, 2022
COMMENTS/SURVEY

The project team invites you to share your comments regarding the I-64/IL Route 111 interchange project. Also included below is a survey requesting your input on how to commemorate the former cemeteries and where the burials should be relocated. Your input will be directed to the Project Study Group for evaluation and consideration in proceeding with address provided on the reverse side. Your comments should be emailed for to provide timely consideration.

1) What feedback do you have about the proposed I-64/IL Route 111 project?

2) How should the relocated remains be memorialized? Please check all that apply you feel should be considered.

Website Plaque Historical research available at local libraries, community centers, and/or city halls

3) IDOT proposes to relocate the remaining burials at the project site to Sunset Gardens of Memory cemetery in Milledale, where the previous burials were relocated. What are your thoughts?

4) From a (check all that apply):
 Resident
 Business Owner
 Commuter

Tell Us About You!
 5) Name: _____
 Address: _____
 City/State/Zip code: _____
 6) Telephone: _____
 Email: _____