



US ROUTE 40

Formosa Road to Bethany Drive

PRELIMINARY ENGINEERING STUDY

WELCOME!

PUBLIC INFORMATIONAL MEETING

March 6, 2024

C.A. Henning Elementary School

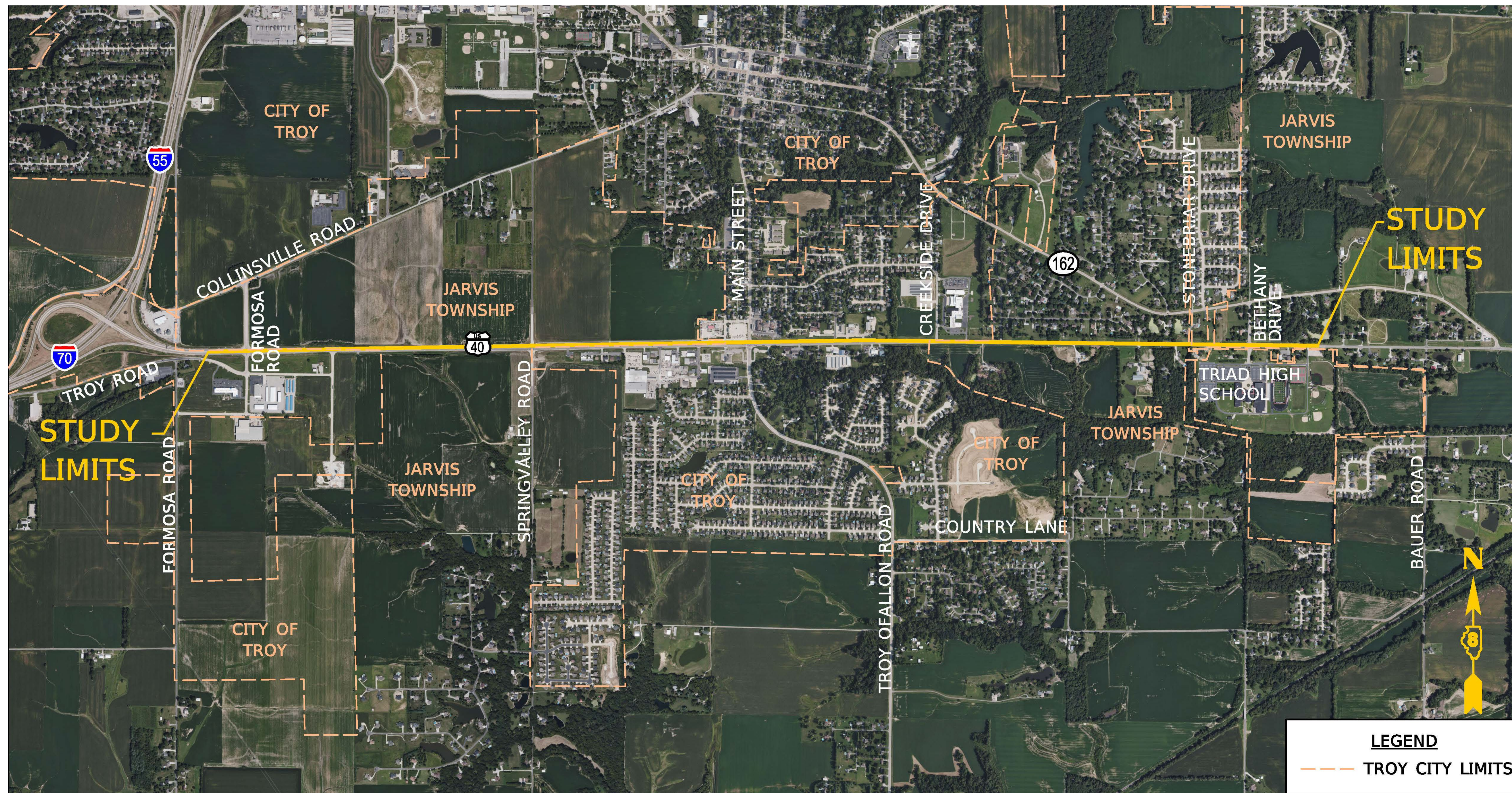


US ROUTE 40

Formosa Road to Bethany Drive

PRELIMINARY ENGINEERING STUDY

STUDY LIMITS





US ROUTE 40

Formosa Road to Bethany Drive

PRELIMINARY ENGINEERING STUDY

PROJECT NEED

Why improve US Route 40?

- US Route 40 already has heavy traffic volumes that currently exceed the roadway capacity, which will only increase in future years.
- Motorists are already experiencing high delays, low travel speed and long backups.
- Over 200 crashes along the corridor during the evaluated 5-year analysis period, with nearly 50 injuries.
- Additional crashes and higher traffic volumes will cause increased delays and back ups at intersections and along the route.



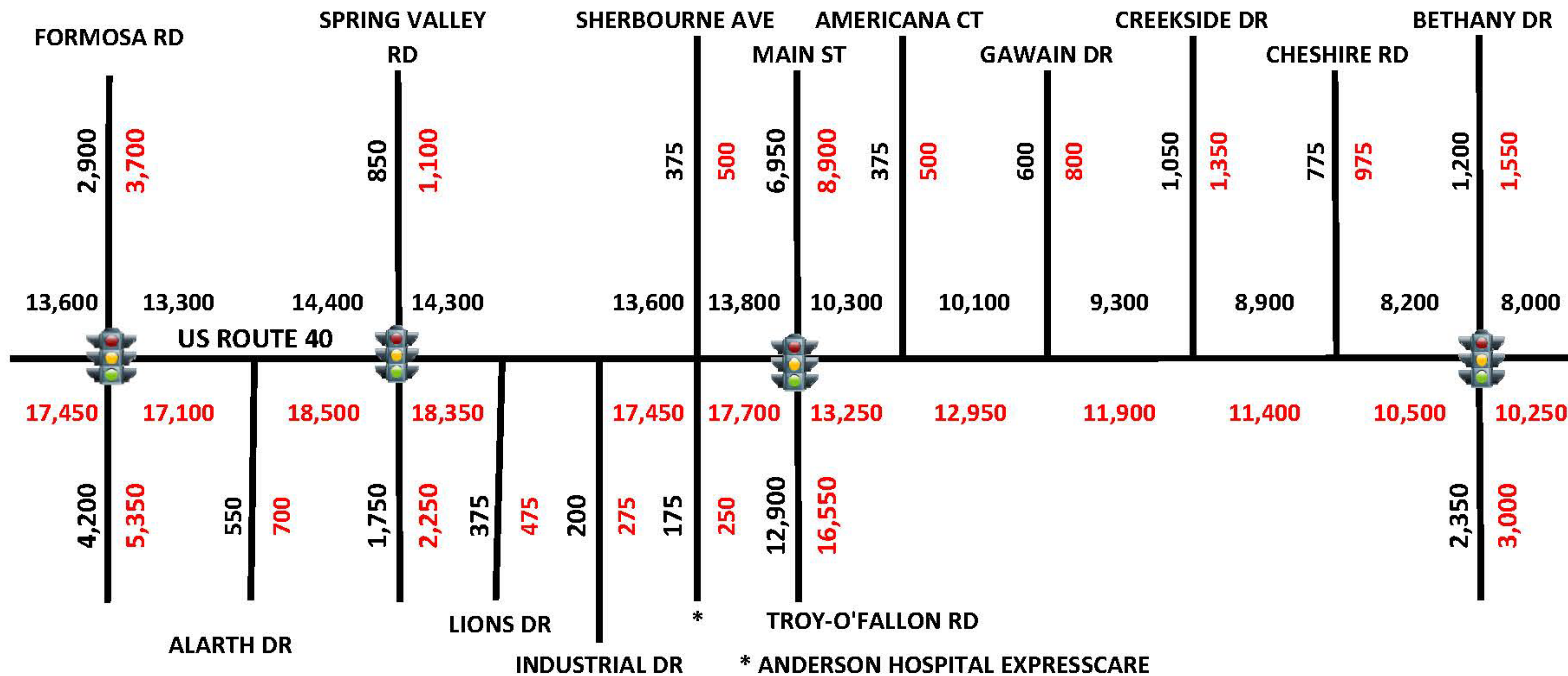


US ROUTE 40

Formosa Road to Bethany Drive
PRELIMINARY ENGINEERING STUDY

TRAFFIC VOLUMES US ROUTE 40

Average Daily Traffic Volumes



LEGEND

XX,XXX EXISTING (2021) AVERAGE DAILY TRAFFIC

XX,XXX PROJECTED (2046) AVERAGE DAILY TRAFFIC

EXISTING SIGNALIZED INTERSECTION





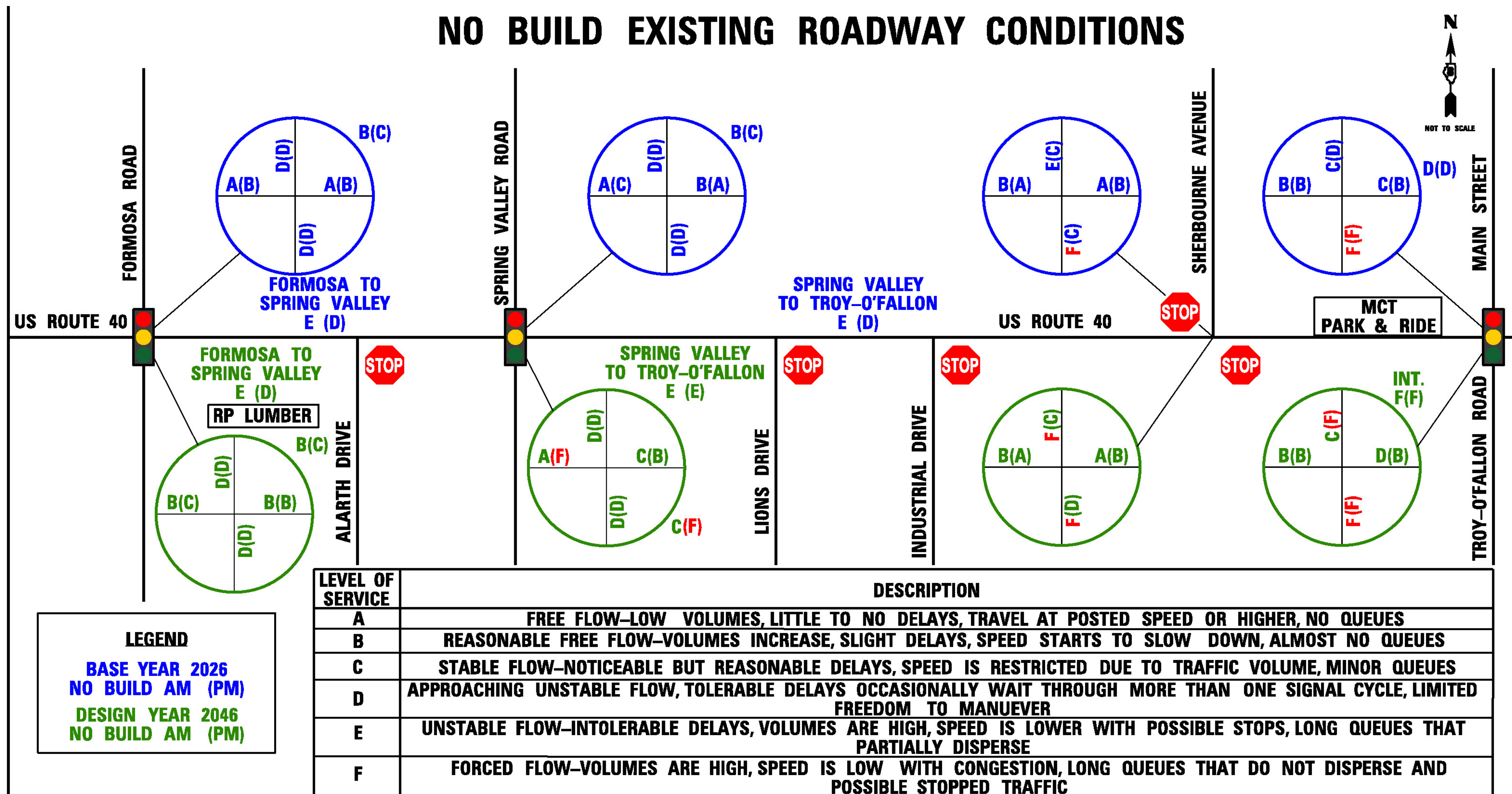
US ROUTE 40

Formosa Road to Bethany Drive

PRELIMINARY ENGINEERING STUDY

LEVEL OF SERVICE US ROUTE 40

NO BUILD EXISTING ROADWAY CONDITIONS





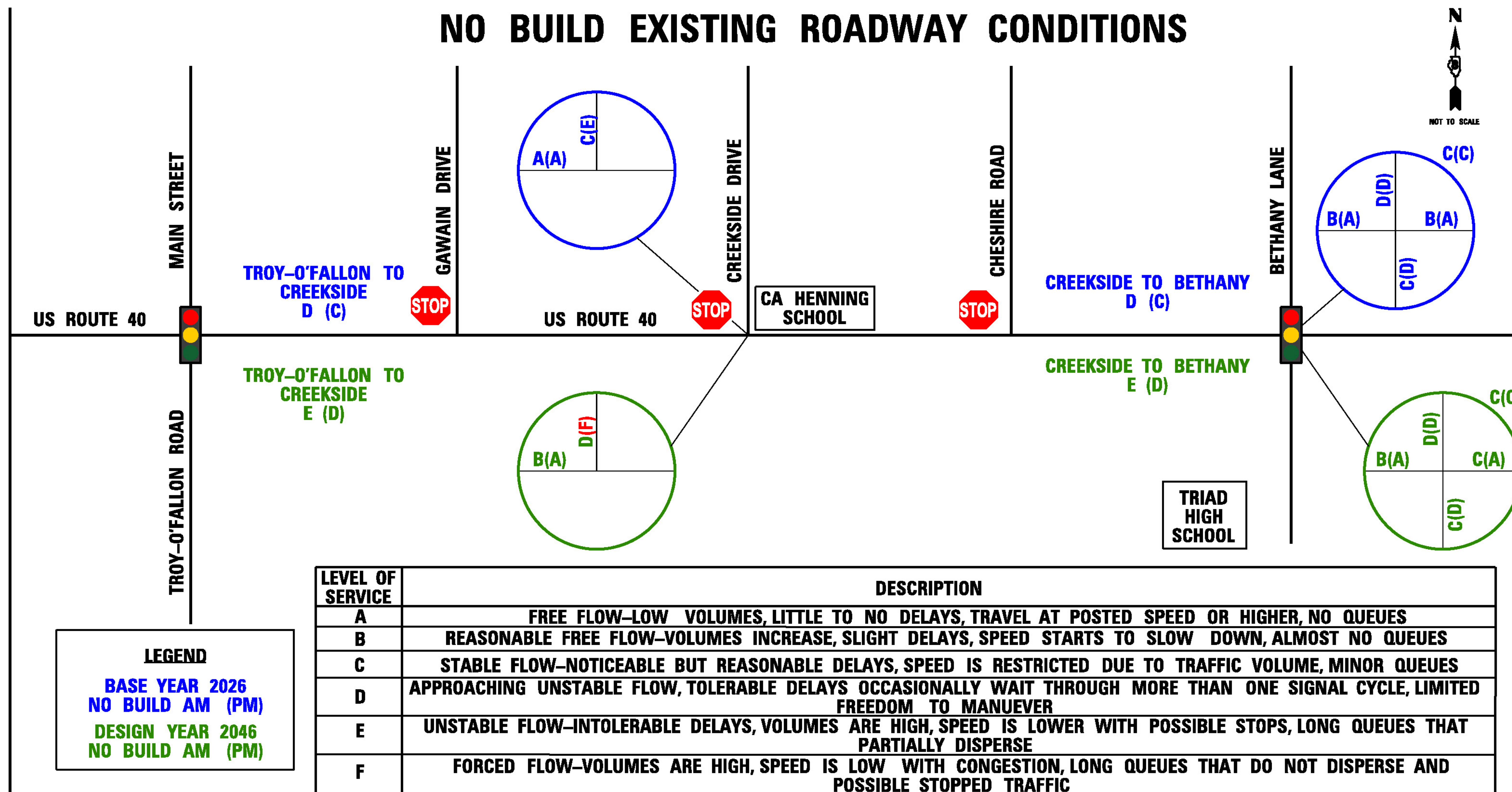
US ROUTE 40

Formosa Road to Bethany Drive

PRELIMINARY ENGINEERING STUDY

LEVEL OF SERVICE US ROUTE 40

NO BUILD EXISTING ROADWAY CONDITIONS





US ROUTE 40

Formosa Road to Bethany Drive

PRELIMINARY ENGINEERING STUDY

BICYCLE & PEDESTRIAN ACCOMMODATIONS

- IDOT considers the travel needs of all users of a transportation corridor, including bicyclists and pedestrians.
- Please speak with a member of the Project Team or submit a comment if you have a need to walk or bike through the project area.





US ROUTE 40

Formosa Road to Bethany Drive

PRELIMINARY ENGINEERING STUDY

ENVIRONMENTAL RESOURCES

What topics are being studied?

- Air quality
- Community and social resources
- Ecology and natural resources
- Economics
- Farmland
- Floodplains
- Historical and archaeological resources
- Land use
- Noise
- Parks and recreation
- Soils and geology
- Regulated substances
- Vegetation
- Visual resources
- Water quality
- Wetlands





US ROUTE 40

Formosa Road to Bethany Drive

PRELIMINARY ENGINEERING STUDY

CONTEXT SENSITIVE SOLUTIONS (CSS)

Context Sensitive Solutions (CSS) is a collaborative, interdisciplinary approach that encourages the involvement of all stakeholders in developing a transportation facility that fits its unique setting, its context. Context relates to all elements in an area, including its people, places, and unique characteristics.

IDOT conducts a context audit to collect information about the study area from the public and other stakeholders. This information helps IDOT better understand community resources and values.





US ROUTE 40

Formosa Road to Bethany Drive
PRELIMINARY ENGINEERING STUDY

COMMUNITY ADVISORY GROUP (CAG)

The Community Advisory Group (CAG) is comprised of stakeholders representing a cross section of the community such as:

- Community leaders
- Homeowners
- Business owners
- Individuals representing special interest groups
- Commuters

Members of the CAG:

- Provide insight into community issues & concerns with regard to study alternatives.
- Acts as a liaison between IDOT and the public by generating interest in the project and knowledge of the study

If you are interested in volunteering to be a member of the CAG, please fill out a CAG member application.





US ROUTE 40

Formosa Road to Bethany Drive

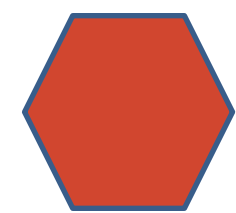
PRELIMINARY ENGINEERING STUDY

PHASE I SCHEDULE

PUBLIC INVOLVEMENT



WE ARE HERE



PUBLIC INVOLVEMENT MEETING (PIM)





US ROUTE 40

Formosa Road to Bethany Drive
PRELIMINARY ENGINEERING STUDY

WE NEED YOUR INPUT

- ◆ Complete a comment form and return to IDOT
- ◆ If interested, fill out an application to be considered on the Community Advisory Group
- ◆ Share your ideas with the study team
- ◆ Comments due: March 30, 2024
- ◆ Contact Sarah Wiskon from IDOT
 - ◆ Email: sarah.wiskon@illinois.gov
 - ◆ Phone: 618-346-3309





US ROUTE 40

Formosa Road to Bethany Drive

PRELIMINARY ENGINEERING STUDY

***THANK YOU FOR
YOUR ATTENDANCE***

