

# **VIRTUAL PUBLIC MEETING**

## **Illinois 37 Project**

**From just south of Campground Road  
in Bonnie to just south of Illinois 14  
(East) in Benton**

**Jefferson and Franklin counties**

**July 19, 2022**



# PUBLIC INVOLVEMENT

Thank you for attending the Illinois 37 public meeting

The purpose of the meeting is to:

- ▶ Provide a project update
- ▶ Provide aerial exhibits with preliminary proposed improvements
- ▶ Identify associated environmental impacts
- ▶ Provide an opportunity to comment on proposed improvements
- ▶ Provide an opportunity to comment on potential impacts
- ▶ Provide project funding information and anticipated timeline
- ▶ This is an open-house format / no formal presentations are planned
- ▶ You are welcome to browse the exhibits and project information at your own pace
- ▶ After reviewing the project materials, we encourage you to complete an online comment form
- ▶ If you would like to request an individual meeting to speak with IDOT representatives, please contact Valerie Rolla by email at [valerie.rolla@illinois.gov](mailto:valerie.rolla@illinois.gov)



# PURPOSE & NEED STATEMENT



The primary purpose in upgrading Illinois 37 is to patch and resurface the existing pavement as high type maintenance, improve the quality of ride, upgrade/rehabilitate roadway items to last for future years, reduce accident rates, accommodate all users, improve geometrics and increase capacity to meet both current and projected traffic demands/vehicle usage, and improve drainage to avert flooding throughout the project limits.

# PROJECT DESCRIPTION

## LIMITS OF PROPOSED IMPROVEMENTS ON ILLINOIS 37:

- ▶ From just south of Campground Road in Bonnie to just north of Bond Street in Benton, south of Illinois 14 (East) in Benton, in Jefferson and Franklin counties

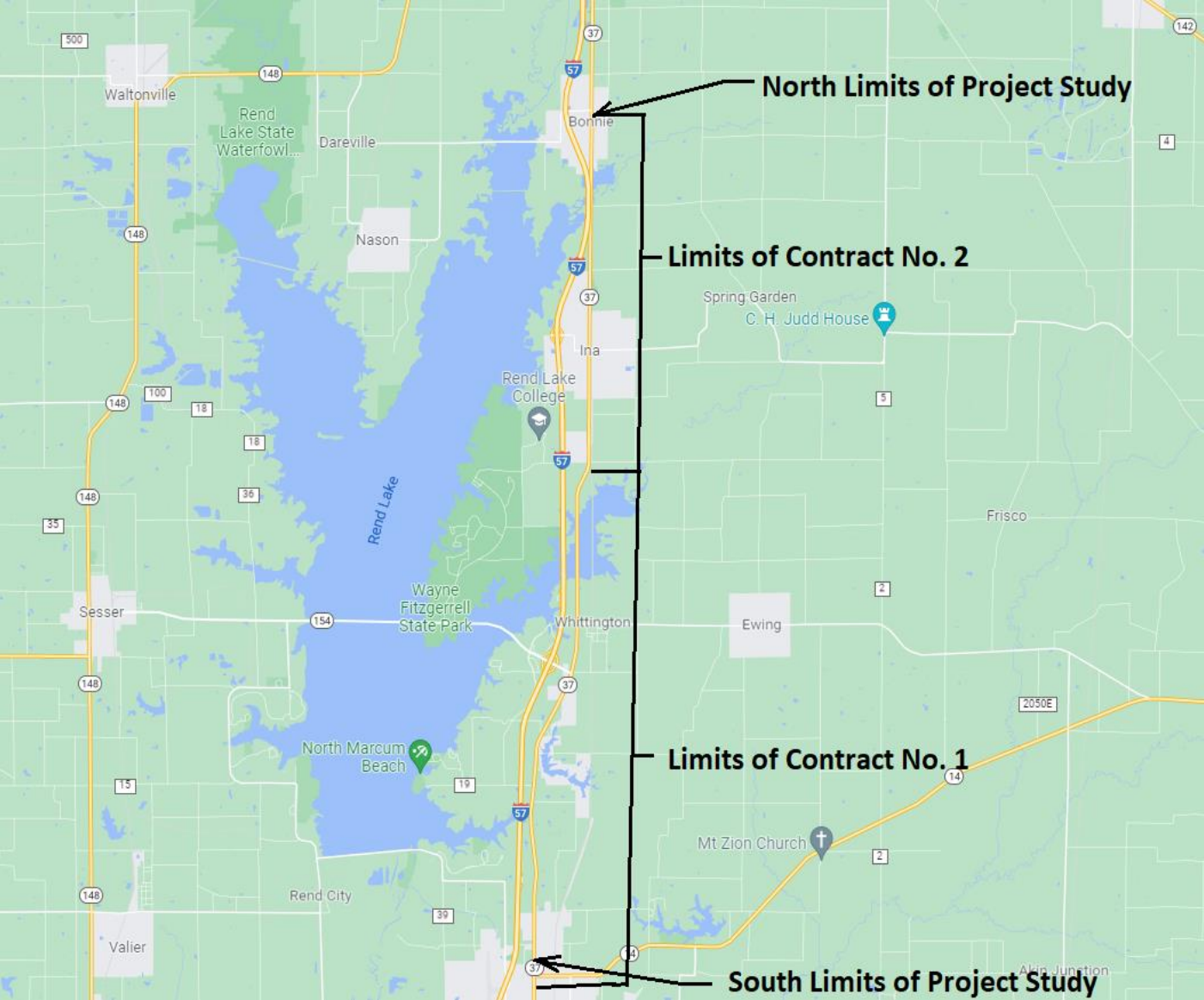
## PROPOSED ACTIONS TO IL 37:

- ▶ Patch and resurface the existing pavement as high type maintenance
- ▶ Rural areas - widen shoulders along Illinois 37 (8' wide; 5' paved and 3' aggregate; accommodating for bicycles)
- ▶ Urban areas - widen shoulders along Illinois 37 (8' wide paved shoulder with curb and gutter (accommodating for bicycles; includes upgrading storm sewer systems and replacing sidewalks to meet ADA requirements)
- ▶ Rehabilitate/replace across road culverts
- ▶ Reshape roadway ditches along Illinois 37 and replace entrance culverts (includes necessary tree removal)
- ▶ Widen and improve radii at sideroad intersections
- ▶ Anticipated Land Acquisition: 185 proposed parcels (14.2 acres of proposed right-of-way; 10.5 acres of proposed permanent/temporary easements)



# PROJECT LOCATION MAP

Illinois 37 from south of Campground Road in Bonnie to south of Illinois 14 in Benton (13.72 Miles)



# CURRENT & PROJECTED TRAFFIC VOLUMES

## Overall

- ▶ Existing Average Daily Traffic (ADT): 3,400 - 6,950 (2019)
- ▶ Projected Average Daily Traffic (ADT): 4,530 - 9,260 (2044)

## Campground Road in Bonnie to the Jefferson/Franklin County line

- ▶ Existing Average Daily Traffic (ADT): 3,400 to 3,550 (2019); 92.5% Passenger Vehicles; 7.5% Trucks
- ▶ Projected Average Daily Traffic (ADT): 4,360 to 4,550 (2044) 92.5% Passenger Vehicles; 7.5% Trucks

## Jefferson/Franklin County line to Marcum Branch Road

- ▶ Existing Average Daily Traffic (ADT): 4,450 to 5,550 (2019); 94.2% Passenger Vehicles; 5.8% Trucks
- ▶ Projected Average Daily Traffic (ADT): 5,590 to 6,980 (2044) 94.2% Passenger Vehicles; 5.8% Trucks

## Marcum Branch Road to Illinois 14 (East)

- ▶ Existing Average Daily Traffic (ADT): 6,350 to 6,950 (2019); 94.8% Passenger Vehicles; 5.2% Trucks
- ▶ Projected Average Daily Traffic (ADT): 7,980 to 8,740 (2042) 94.8% Passenger Vehicles; 5.2% Trucks



# CRASH DATA & ANALYSIS

Entire Project Length = 13.72 miles

<u>Years</u>	<u>Total Crashes</u>	<u>Total Serious Injuries</u>	<u>Total Fatalities</u>
2013 - 2019	274	22 (22-crashes)	3 (2-crashes)

<u>Primary Crash Types (Serious Injuries / Fatalities)</u>	<u>Crash Locations</u>	<u>Proposed Improvements</u>
Fatality	0.10 Mi. north of Adams Road (vehicle ran off roadway, hit guardrail, and overturned, landing immersed in water)	Guardrail replaced since incident; proposed resurfacing with new pavement markings, and wider shoulders (paved and aggregate) will increase visibility and ability to recover
Fatality	0.55 Mi. south of the Jefferson/Franklin Co. Line (vehicle ran off roadway on curve while passing another vehicle, landed inside ditch)	Proposed resurfacing with new pavement markings with no passing zone through curve, and wider shoulders (paved and aggregate) will restrict passing in this area and increase ability to recover
Serious Injuries (22 various crashes resulted from front-to-rear, turning angle, and running off the road hitting fixed object / overturning collisions)	Just south of Palmer Lane in Bonnie and 0.85 miles south of Palmer Lane in Bonnie are the two bridge locations. One front-to-rear crash at a location where a flagger stopped vehicles, during construction; and others where at various locations	Limit time of construction on future projects and possibly increase use of warning devices such as rumble strips and signage to alert drivers to be ready to stop ahead at bridge construction; wider shoulders (paved and aggregate) with intersection improvements and entrance improvements all will increase ability for vehicles to exit roadway faster and avoid potential collisions; wider shoulders and establishing wider clear zone, which eliminates adjacent hazards, will increase visibility, ability to recover, and overall allow a safer roadway



# DESIGN CRITERIA

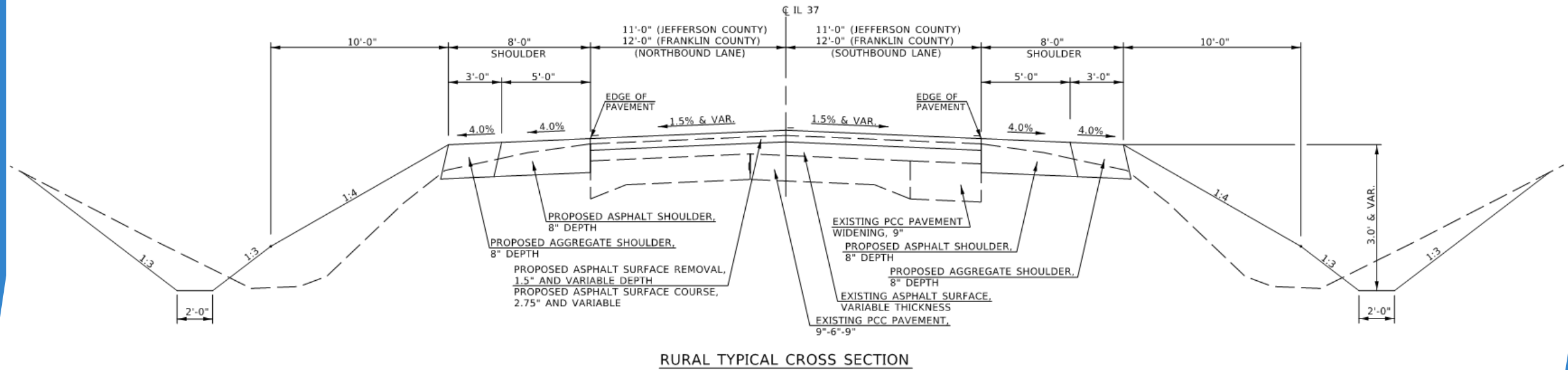
## Proposed Roadway Improvement

Illinois 37 is classified as Major Collector and designated as a Class II Truck Route. It is not designated as part of the National Highway System; however, it parallels I-57 for the full length of this project, less than half a mile directly east. IDOT BDE Manual Chapter 49, 3R Guidelines for Rural and Urban Highways was used for the design of this project.

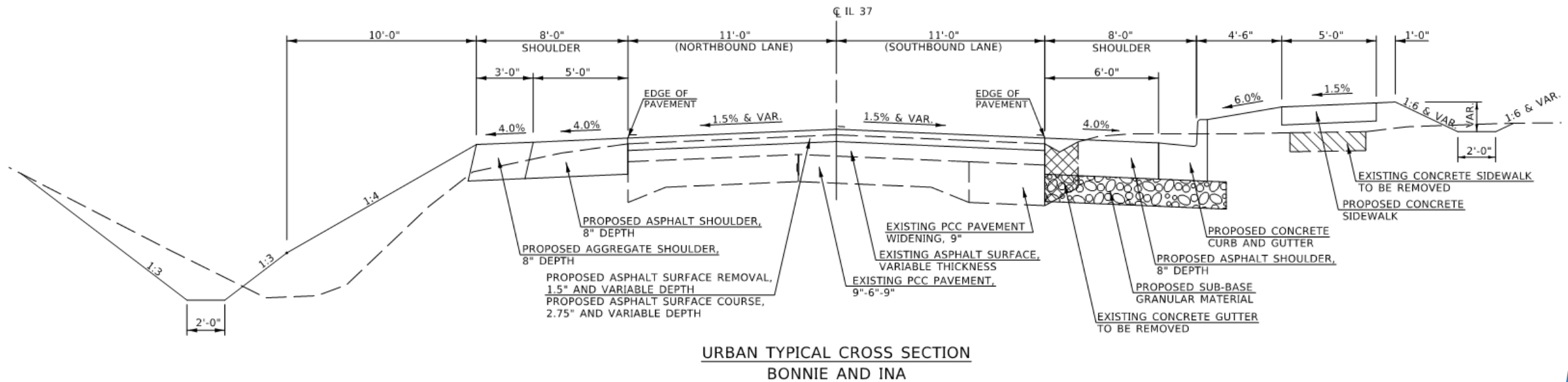




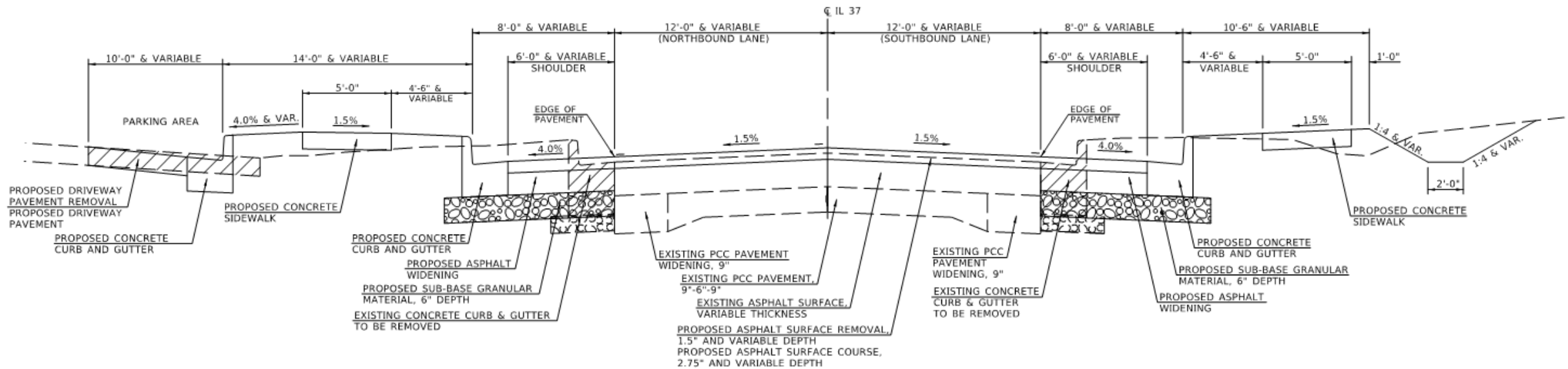
# PROPOSED TYPICAL CROSS SECTIONS - IL 37 RURAL AREAS



# PROPOSED TYPICAL CROSS SECTIONS - IL 37 URBAN AREAS; BONNIE & INA



# PROPOSED TYPICAL CROSS SECTIONS - IL 37 URBAN AREAS BENTON



URBAN TYPICAL CROSS SECTION  
BENTON

# PROPOSED ILLINOIS 37 AERIAL EXHIBITS

(PLEASE CLICK ON THE ILLINOIS 37 AERIAL EXHIBIT LINK TO VIEW AERIAL WITH PRELIMINARY PROPOSED IMPROVEMENTS STARTING AT THE NORTH EDGE OF BONNIE AND EXTENDING SOUTH TO BOND STREET IN BENTON)

# POTENTIAL ENVIRONMENTAL IMPACTS

- ▶ Section 106 Cultural Resource Coordination, if applicable
- ▶ Section 4(f) Recreational Property Impacts, Rend Lake, if applicable
- ▶ Wetlands



# MAINTENANCE OF TRAFFIC DURING CONSTRUCTION

- ▶ Possible day and/or weekend closures on Illinois 37 required to replace cross road culverts



# PUBLIC MEETING COMMENTS

## Your comments are encouraged

Please submit your comments by completing the online comment form or provide your written comments to:

**Ms. Carrie Nelson**  
**Program Development Engineer**  
**Illinois Department of Transportation**  
**PO Box 100**  
**Carbondale, IL 62903**

If you would like to request an individual meeting to speak with IDOT representatives, please contact Valerie Rolla by email at [valerie.rolla@illinois.gov](mailto:valerie.rolla@illinois.gov)

**Comments received after July 19 will not be part of the Public Meeting record.**



# PROJECT TEAM



## **Illinois Department of Transportation**

Office of Highways Project Implementation / Region 5 / District 9  
2801 W. Murphysboro, PO Box 100  
Carbondale, Illinois 62903



**BACON | FARMER | WORKMAN**

**ENGINEERING & TESTING, INC.**  
403 N. COURT STREET | MARION, IL 62959







**THANK YOU  
FOR YOUR  
PARTICIPATION!!!**

- ▶ **PLEASE DON'T  
FORGET TO GIVE US  
YOUR COMMENTS**