

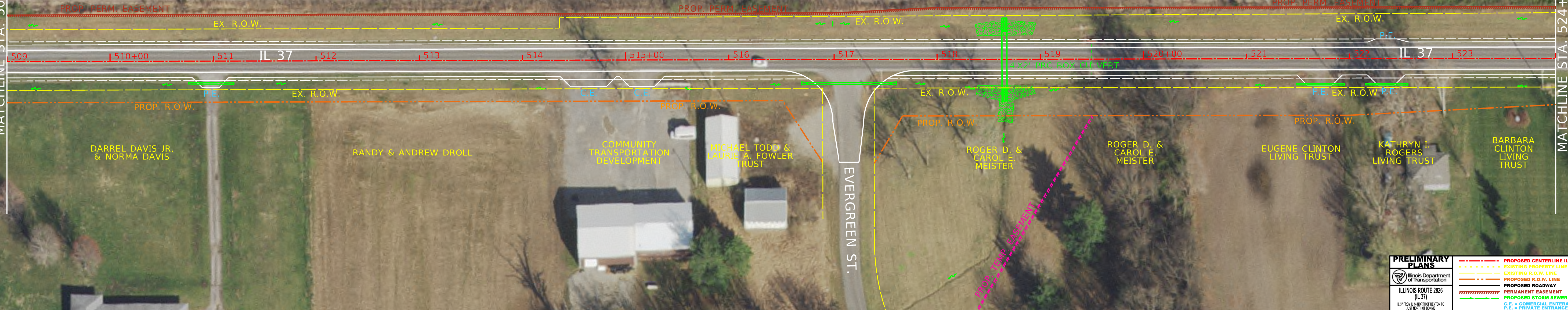


UNION PACIFIC R.R.

UNION PACIFIC R.R.

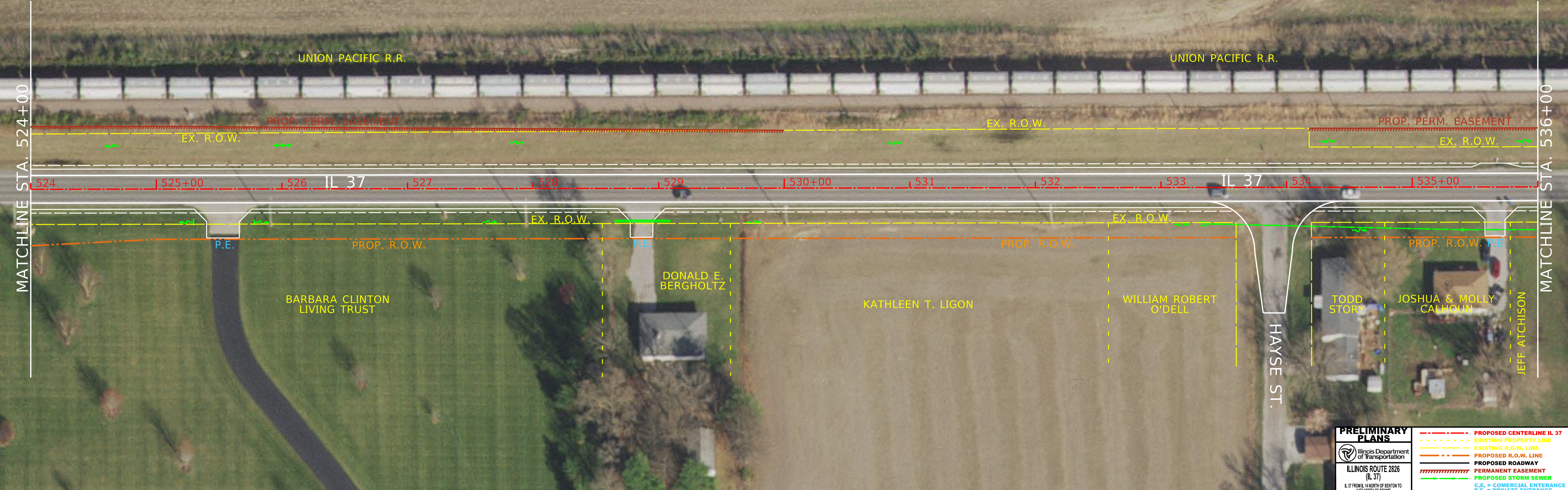
MATCHLINE STA. 509+00

MATCHLINE STA. 524+00



**PRELIMINARY PLANS**  
 Illinois Department of Transportation  
 ILLINOIS ROUTE 2826 (IL 37)  
 IL 37 FROM IL 14 NORTH OF BENTON TO JUST NORTH OF BONNIE, JEFFERSON / FRANKLIN COUNTY

	PROPOSED CENTERLINE IL 37
	EXISTING PROPERTY LINE
	EXISTING R.O.W. LINE
	PROPOSED R.O.W. LINE
	PROPOSED ROADWAY
	PERMANENT EASEMENT
	PROPOSED STORM SEWER
	C.E. = COMERCIAL ENTERENCE
	P.E. = PRIVATE ENTRANCE
	F.E. = FIELD ENTRANCE



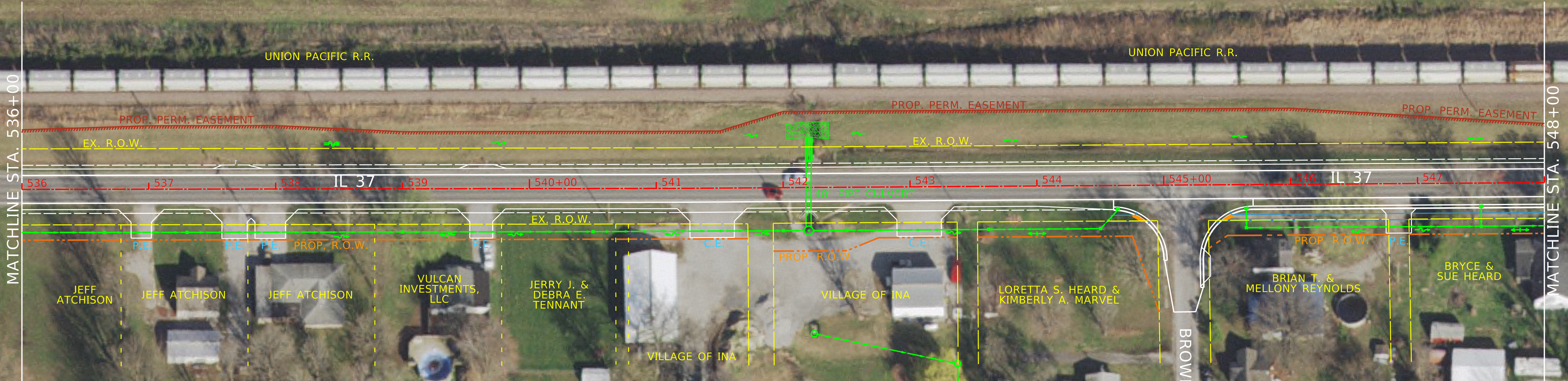
**PRELIMINARY PLANS**

Illinois Department of Transportation

ILLINOIS ROUTE 2826 (IL 37)

IL 37 FROM IL 14 NORTH OF BENTON TO JUST NORTH OF BONNE JEFFERSON / FRANKLIN COUNTY

- PROPOSED CENTERLINE IL 37
- EXISTING PROPERTY LINE
- EXISTING R.O.W. LINE
- PROPOSED R.O.W. LINE
- PROPOSED ROADWAY
- PERMANENT EASEMENT
- PROPOSED STORM SEWER
- C.E. = COMERCIAL ENTRANCE
- P.E. = PRIVATE ENTRANCE
- F.E. = FIELD ENTRANCE



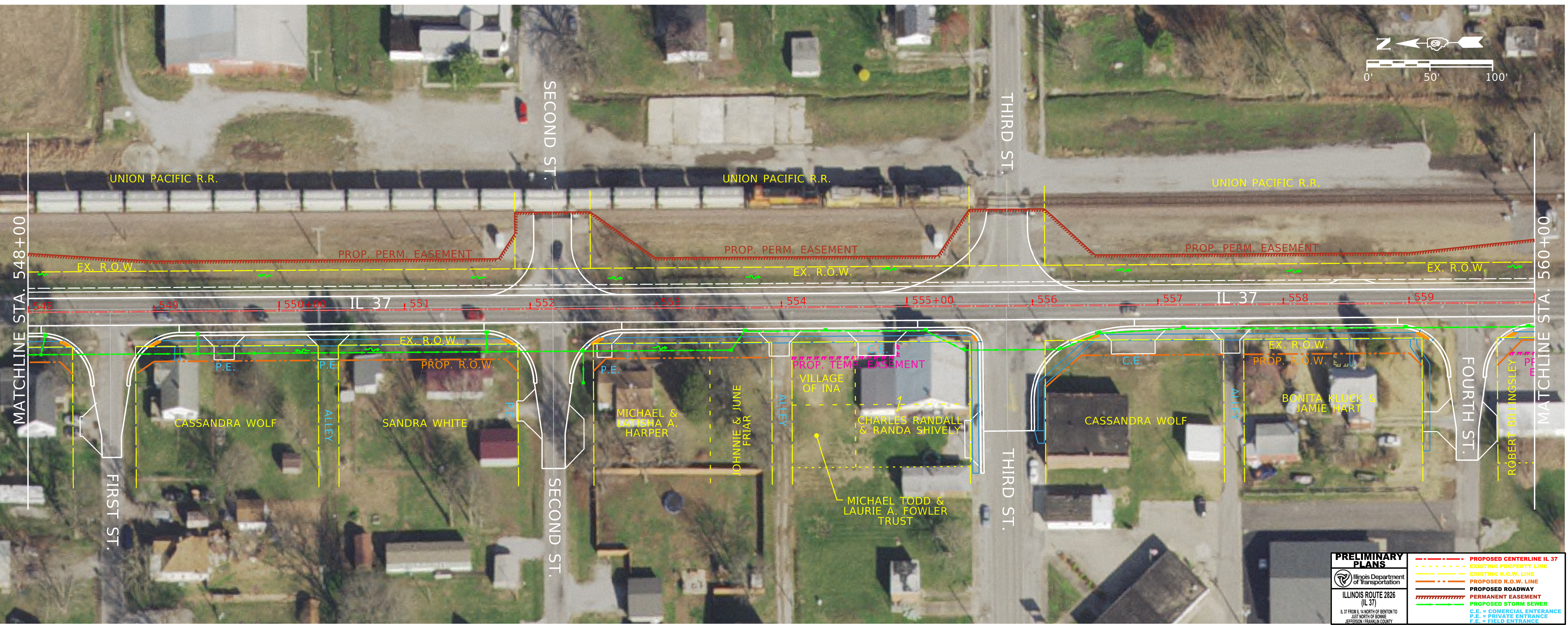
**PRELIMINARY PLANS**

Illinois Department of Transportation

ILLINOIS ROUTE 2826 (IL 37)

IL 37 FROM IL 14 NORTH OF BENTON TO JUST NORTH OF BONNE JEFFERSON / FRANKLIN COUNTY

- PROPOSED CENTERLINE IL 37
- EXISTING PROPERTY LINE
- EXISTING R.O.W. LINE
- PROPOSED R.O.W. LINE
- PROPOSED ROADWAY
- PERMANENT EASEMENT
- PROPOSED STORM SEWER
- C.E. = COMMERCIAL ENTRANCE
- P.E. = PRIVATE ENTRANCE
- F.E. = FIELD ENTRANCE



<b>PRELIMINARY PLANS</b>	
	Illinois Department of Transportation
ILLINOIS ROUTE 2826 (IL 37)	
IL 37 FROM IL 14 NORTH OF BENTON TO JUST NORTH OF BONNE JEFFERSON / FRANKLIN COUNTY	
	PROPOSED CENTERLINE IL 37
	EXISTING PROPERTY LINE
	EXISTING R.O.W. LINE
	PROPOSED R.O.W. LINE
	PROPOSED ROADWAY
	PERMANENT EASEMENT
	PROPOSED STORM SEWER
	C.E. = COMERCIAL ENTRANCE
	P.E. = PRIVATE ENTRANCE
	F.E. = FIELD ENTRANCE



MATCHLINE STA. 560+00

MATCHLINE STA. 572+00

<b>PRELIMINARY PLANS</b>  ILLINOIS ROUTE 2826 (IL 37) <small>IL 37 FROM I. 14 NORTH OF BENTON TO JUST NORTH OF BONNE, JEFFERSON, FRANKLIN COUNTY</small>		<b>PROPOSED CENTERLINE IL 37</b> <b>EXISTING PROPERTY LINE</b> <b>EXISTING R.O.W. LINE</b> <b>PROPOSED R.O.W. LINE</b> <b>PROPOSED ROADWAY</b> <b>PERMANENT EASEMENT</b> <b>PROPOSED STORM SEWER</b> <b>C.E. = COMMERCIAL ENTRANCE</b> <b>P.E. = PRIVATE ENTRANCE</b> <b>F.E. = FIELD ENTRANCE</b>
---	--	---