



PRELIMINARY PLANS
 Illinois Department of Transportation
 ILLINOIS ROUTE 2826
 (IL 37)
 L1 FROM A MAP OF SECTION TO JUST NORTH OF BONE, DEWELP, ILLINOIS COUNTY

— — — — —	PROPOSED CENTERLINE
— — — — —	EXISTING PROPERTY LINE
— — — — —	EXISTING R.O.W. LINE
— — — — —	PROPOSED R.O.W. LINE
— — — — —	PROPOSED ROADWAY
— — — — —	PROPOSED STORM SEWER
— — — — —	C.E. = COMMERCIAL ENTRANCE
— — — — —	P.E. = PRIVATE ENTRANCE
— — — — —	F.E. = FIELD ENTRANCE



MATCHLINE STA. 1020+00

MATCHLINE STA. 1035+00

JERRY WHITEHEAD
 JERRY E. DOTY
 MARVIN GATES
 JERRY E. DOTY
 WILLIAM J. YOUNG
 UNA KAY HAYES
 WILLIAM J. YOUNG
 STATE OF ILLINOIS
 KIMBERLY MILLIGAN

EX. R.O.W.
 PROP. R.O.W.
 IL 37
 1020+00
 1021
 1022
 1023
 1024
 1025+00
 1026
 1027
 1028
 1029
 1030+00
 1031
 1032
 1033
 1034
 1035+00

C.E.
 P.E.
 C.E.
 P.E.
 C.E.
 P.E.
 C.E.
 P.E.

3' RC BOX CULVERT
 12'x4' BOX CULVERT

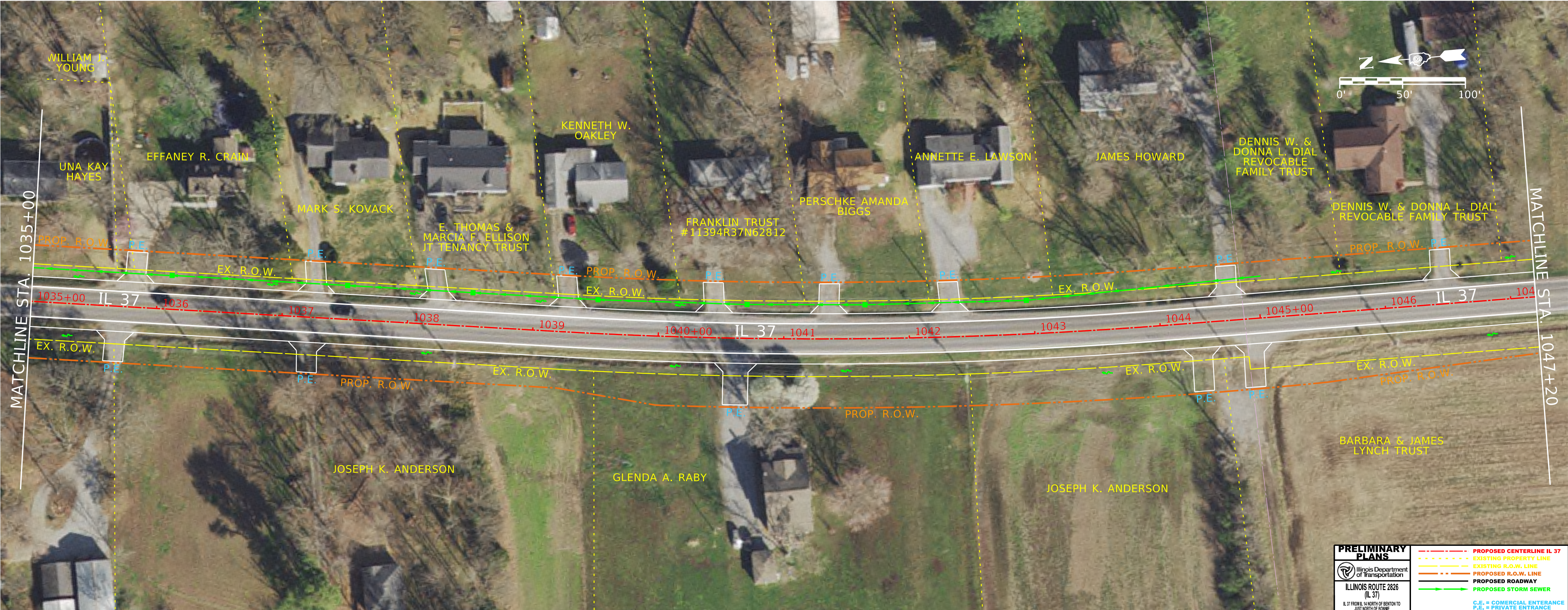
PRELIMINARY PLANS

Illinois Department of Transportation

ILLINOIS ROUTE 2826 (IL 37)

IL 37 FROM 1/4 NORTH OF BENTON TO JUST NORTH OF SCOWIE, JEFFERSON, FRANKLIN COUNTY

- PROPOSED CENTERLINE IL 37
- - - EXISTING PROPERTY LINE
- - - EXISTING R.O.W. LINE
- PROPOSED R.O.W. LINE
- PROPOSED ROADWAY
- PROPOSED STORM SEWER
- C.E. = COMERCIAL ENTRANCE
- P.E. = PRIVATE ENTRANCE
- F.E. = FIELD ENTRANCE



MATCHLINE STA. 1035+00

MATCHLINE STA. 1047+20

PRELIMINARY PLANS

Illinois Department of Transportation

ILLINOIS ROUTE 2826 (IL 37)

IL 37 FROM IL 44 NORTH OF BENTON TO JUST NORTH OF SORNE, JEFFERSON, FRANKLIN COUNTY

	PROPOSED CENTERLINE IL 37
	EXISTING PROPERTY LINE
	EXISTING R.O.W. LINE
	PROPOSED R.O.W. LINE
	PROPOSED ROADWAY
	PROPOSED STORM SEWER
	C.E. = COMMERCIAL ENTRANCE
	P.E. = PRIVATE ENTRANCE
	F.E. = FIELD ENTRANCE

MATCHLINE STA. 1047+20

MATCHLINE STA. 1059+20



SHIRLEY A. DIAL

JASON CORN

JASON CORN

LSM REALTY LLC

LSM REALTY LLC

MER CAR DG CORPORATION

1048 IL 37 1049 1050+00 1051 IL 37 1052 1053 1054 1055+00 1056 1057 1058 IL 37 1059

4'x2' BOX CULVERT

BARBARA & JAMES LYNCH TRUST

KENNETH R. BOLEN REVOCABLE TRUST

JOHN R. TAYLOR

PRELIMINARY PLANS

ILLINOIS ROUTE 2826 (IL 37)
IL 37 FROM IL 14 NORTH OF BENTON TO JUST NORTH OF SOWNE, JEFFERSON, FRANKLIN COUNTY

- PROPOSED CENTERLINE IL 37
- EXISTING PROPERTY LINE
- EXISTING R.O.W. LINE
- PROPOSED R.O.W. LINE
- PROPOSED ROADWAY
- PROPOSED STORM SEWER
- C.E. = COMMERCIAL ENTRANCE
- P.E. = PRIVATE ENTRANCE
- F.E. = FIELD ENTRANCE