



MATCHLINE STA. 1059+20

MATCHLINE STA. 1071+20

MER CAR DG CORPORATION

JAN A. MELVIN

WILLIAM B. LEVANTI

ROBERT J. WELLS JR.

JON C. KRAFT

MICHAEL J. KRAFT

KELLIE A. GRIFFTH

JMHM LLC

GREGORY DEAN WEEKS FAMILY LAND TRUST

PROP. R.O.W.

P.E.

EX. R.O.W.

P.E.

PROP. R.O.W.

EX. R.O.W.

P.E.

P.E.

P.E.

P.E.

P.E.

EX. R.O.W.

P.E.

IL 37 1060+00

1061

1062

1063

1064

1065+00

IL 37 1066

1067

1068

1069

1070+00

IL 37 1071+00

5'X2' BOX CULVERT

EX. R.O.W.

EX. R.O.W.

P.E.

P.E.

C.E.

EX. R.O.W.

JOHN R. TAYLOR

BARBARA K. & JAMES LYNCH TRUST

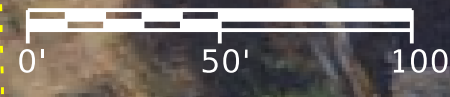
HOOSIER PROPERTY MANAGEMENT, LLC

JOHN R. TAYLOR

<b>PRELIMINARY PLANS</b>	
	Illinois Department of Transportation
ILLINOIS ROUTE 2826 (IL 37)	
IL 37 FROM IL 14 NORTH OF BENTON TO JUST NORTH OF BOWNE, JEFFERSON / FRANKLIN COUNTY	
	PROPOSED CENTERLINE IL 37
	EXISTING PROPERTY LINE
	EXISTING R.O.W. LINE
	PROPOSED R.O.W. LINE
	PROPOSED ROADWAY
	PROPOSED STORM SEWER
	C.E. = COMMERCIAL ENTRANCE
	P.E. = PRIVATE ENTRANCE
	F.E. = FIELD ENTRANCE

MATCHLINE STA. 1071+20

MATCHLINE STA. 1083+20



GREGORY DEAN WEEKS FAMILY LAND TRUST

NANCY J. ODOM

CASEY J. RHINE

RODNEY LEE MELVIN REV TRUST

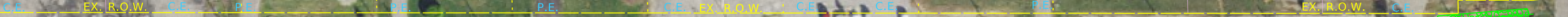
RODNEY MELVIN

RODNEY LEE MELVIN REV TRUST

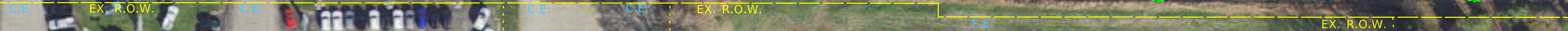
LINDSEY FISHER

FW RESIDENTIAL PROPERTIES, INC.

SHANNON MELVIN



IL 37 1072 1073 1074 1075+00 1076 1077 IL 37 1078 1079 1080+00 1081 1082 IL 37 1083



GREGORY DEAN WEEKS FAMILY LAND TRUST

LYNCH FAMILY TRUST

BARBARA K. & JAMES LYNCH TRUST

MICHAEL E. MITCHELL

**PRELIMINARY PLANS**

ILLINOIS ROUTE 2826 (IL 37)

IL 37 FROM E. 14 NORTH OF BENTON TO JUST NORTH OF BONIE, JEFFERSON / FRANKLIN COUNTY

- PROPOSED CENTERLINE IL 37
- EXISTING PROPERTY LINE
- EXISTING R.O.W. LINE
- PROPOSED R.O.W. LINE
- PROPOSED ROADWAY
- PROPOSED STORM SEWER
- C.E. = COMMERCIAL ENTRANCE
- P.E. = PRIVATE ENTRANCE
- F.E. = FIELD ENTRANCE



MATCHLINE STA. 1083+20

MATCHLINE STA. 1095+20

E. ILLINOIS ST.

PETROFF RD.

FW RESIDENTIAL PROPERTIES, INC.

INTERNATIONAL UNITED MINE WORKERS OF AMERICA

K&M LIQUORS, INC.

ANRAP, INC.

EDIN, INC.

JAMERSON AUTO SALES, INC.

IL 37

IL 37

IL 37

1085+00

1086

1087

1088

1089

1090+00

1091

1092

1093

1094

1095

EX. R.O.W.

EX. R.O.W.

PROP. R.O.W.

PROP. R.O.W.

EX. R.O.W.

EX. R.O.W.

PROP. R.O.W.

C.E.

C.E.

C.E.

C.E.

C.E.

C.E.

C.E.

C.E.

P.E.

P.E.

PROP. R.O.W.

PROP. TEMP. EASEMENT

PAUL E. ADAMS

MICHELE RUBALCABA

TED GOSTOWSKI

KELLI K. OWENS

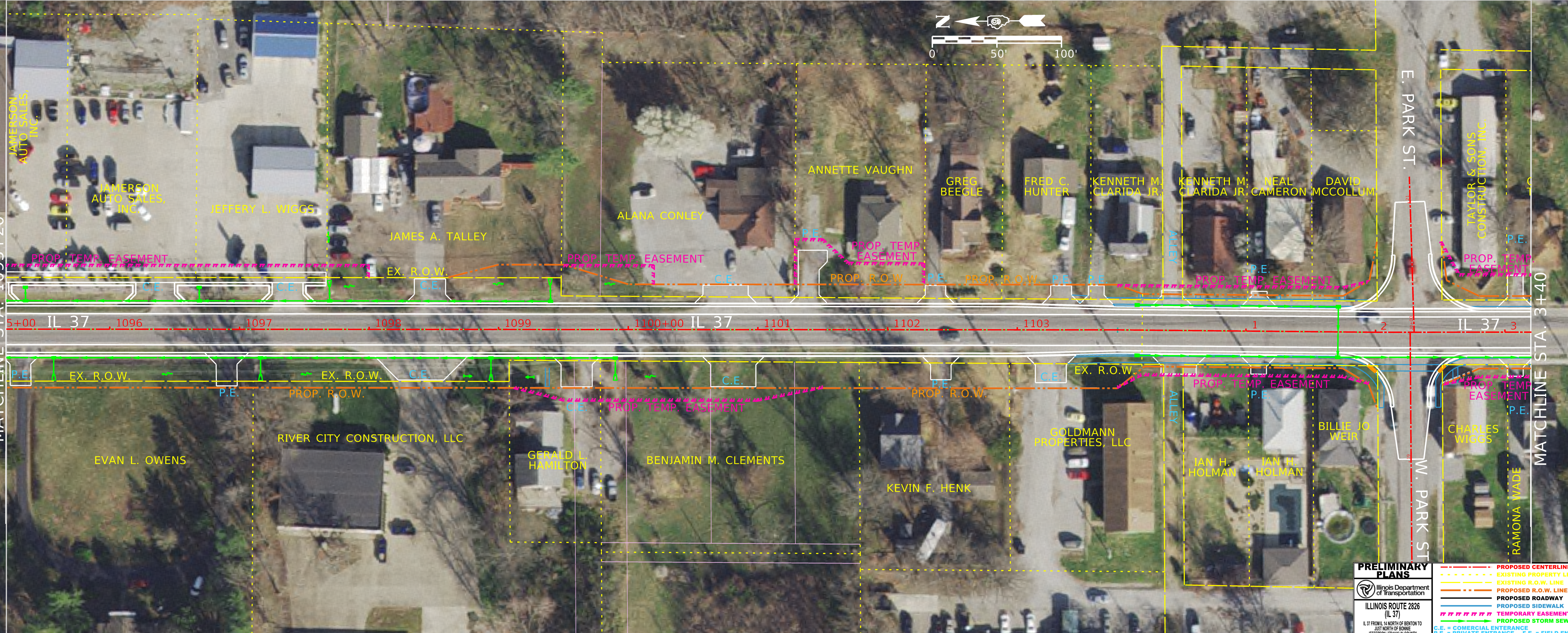
JERRY D. HILL

<b>PRELIMINARY PLANS</b> Illinois Department of Transportation ILLINOIS ROUTE 2826 (IL 37) IL 37 FROM 1/4 NORTH OF BENTON TO JUST NORTH OF BONIE, JEFFERSON / FRANKLIN COUNTY		--- PROPOSED CENTERLINE IL 37 - - - EXISTING PROPERTY LINE - - - EXISTING R.O.W. LINE
--- PROPOSED ROADWAY --- PROPOSED SIDEWALK - - - PROPOSED TEMPORARY EASEMENT --- PROPOSED STORM SEWER	--- PROP. TEMP. EASEMENT --- PROP. R.O.W. --- EX. R.O.W. --- P.E. --- F.E.	--- PROP. TEMP. EASEMENT --- PROP. R.O.W. --- EX. R.O.W. --- P.E. --- F.E.



MATCHLINE STA. 1095+20

MATCHLINE STA. 3+40



<b>PRELIMINARY PLANS</b>	
	Illinois Department of Transportation
ILLINOIS ROUTE 2826 (IL 37)	
IL 37 FROM 1/4 NORTH OF BENTON TO JUST NORTH OF BONNIE, JEFFERSON / FRANKLIN COUNTY	
	PROPOSED CENTERLINE IL 37
	EXISTING PROPERTY LINE
	EXISTING R.O.W. LINE
	PROPOSED R.O.W. LINE
	PROPOSED ROADWAY
	PROPOSED SIDEWALK
	TEMPORARY EASEMENT
	PROPOSED STORM SEWER
	C.E. = COMMERCIAL ENTRANCE
	P.E. = PRIVATE ENTRANCE
	F.E. = FIELD ENTRANCE



MATCHLINE STA. 3+40

MATCHLINE STA. 15+40



<b>PRELIMINARY PLANS</b>	
Illinois Department of Transportation	
ILLINOIS ROUTE 2826 (IL 37)	
IL 37 FROM N. 14 NORTH OF BENTON TO JUST NORTH OF BONNE JEFFERSON / FRANKLIN COUNTY	
	PROPOSED CENTERLINE IL 37
	EXISTING PROPERTY LINE
	EXISTING R.O.W. LINE
	PROPOSED R.O.W. LINE
	PROPOSED ROADWAY
	PROPOSED SIDEWALK
	TEMPORARY EASEMENT
	PROPOSED STORM SEWER
	C.E. = COMERCIAL ENTRANCE
	P.E. = PRIVATE ENTRANCE
	F.E. = FIELD ENTRANCE