

Illinois Route 68 *at* **Bateman Road**
INTERSECTION IMPROVEMENT PROJECT



Community Advisory Group (CAG)
Meeting #1

04.30.2026



Illinois Department
of Transportation

Project Team & Introductions

- Illinois Department of Transportation (IDOT)
- Primera Engineers (Consultant)



Illinois Route 68  Bateman Road
INTERSECTION IMPROVEMENT PROJECT

CAG Ground Rules

- Input from all participants is valued and considered.
- All participants must come to the process with an open mind and participate openly and honestly.
- All participants must treat each other with respect and dignity.
- All participants understand that topics will not be revisited once the issues have been addressed and general understanding is reached.



Illinois Route 68  Bateman Road
INTERSECTION IMPROVEMENT PROJECT

CAG Ground Rules (continued)

- The project must progress at a reasonable pace, based on the original project schedule.
- All decisions made by IDOT must be arrived at in a clear and transparent manner and the stakeholders should agree their inputs have been considered.
- Members of the media are welcome to attend the meetings as observers, not participants in the process.
- The participants and list of stakeholders is subject to change as the project warrants.



Illinois Route 68  Bateman Road
INTERSECTION IMPROVEMENT PROJECT

Meeting Agenda

- Existing Conditions
- Stakeholder Input
- Alternatives Considered
- Next Steps



Illinois Route 68  Bateman Road
INTERSECTION IMPROVEMENT PROJECT

Why are we here?



Illinois Department
of Transportation

Illinois Route 68  Bateman Road
INTERSECTION IMPROVEMENT PROJECT

Typical IDOT Project Process



*Phase I is currently funded

**Funding for Phase II and III is not currently included in the Department's FY 2026-2031 Proposed Highway & Multimodal Improvement Program.



Illinois Route 68 + Bateman Road
INTERSECTION IMPROVEMENT PROJECT

Phase I: Preliminary Engineering & Environmental Studies

- Identifies issues and concerns
- Proposes potential solutions
- Engages the public for input

Phase II: Contract Plan Preparation & Land Acquisition

- Develops detailed construction plans
- Acquires necessary land to complete construction

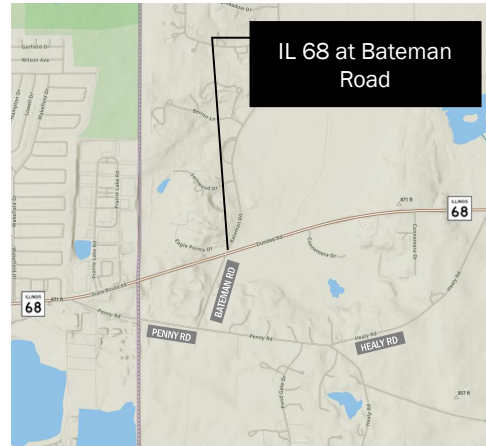
Phase III: Construction

- Most visible phase to the public
- Builds the design completed by Phase I and enhanced by Phase II

Phase I is currently funded. Funding for Phase II and III is not currently included in the Department's FY 2026-2031 Proposed Highway & Multimodal Improvement Program.

Why is IDOT doing this project?

- History of injury crashes
- Intent to improve intersection safety



Illinois Route 68  Bateman Road
INTERSECTION IMPROVEMENT PROJECT

What are the safety concerns?



Illinois Department
of Transportation

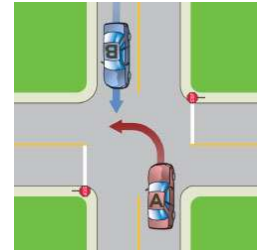
Illinois Route 68  Bateman Road
INTERSECTION IMPROVEMENT PROJECT

What are the safety concerns?

- 7 years of crash data (2017-2023)
- 18 total crashes
- 11 injury crashes
- 9 angle crashes (T-bone)
- 4 turning crashes



Angle crash example



Turning crash example



Illinois Route 68  Bateman Road
INTERSECTION IMPROVEMENT PROJECT

Existing Crash History

Angle crash type connected to one (1) Fatal Crash and two (2) Type A Crashes

Front to Rear (rear-end) crash type connected to one (1) Type A Crash

Illinois Route 68 and Bateman Road									
Type of Crash	2017	2018	2019	2020	2021	2022	2023	Total Crashes	%
Angle	1	1	1	2	0	3	1	9	50.00%
Turning	1	0	0	1	0	1	1	4	22.22%
Front to Rear	0	2	0	1	0	0	0	3	16.67%
Fixed Object	0	1	0	0	0	0	0	1	5.56%
Sideswipe Opposite Direction	0	1	0	0	0	0	0	1	5.56%
Total	2	5	1	4	0	4	2	18	100.00%
Injury Severity									
Type A Injury Crashes	0	1	0	2	0	0	0	3	27.27%
Type B Injury Crashes	0	1	0	0	0	1	0	2	18.18%
Type C Injury Crashes	1	1	0	2	0	1	0	5	45.45%
Type K Injury Crashes	0	0	0	0	0	1	0	1	9.09%
Total Injury Crashes	1	3	0	4	0	3	0	11	100.00%
Total Number of Injuries	2	12	0	7	0	3	0	24	-
Lighting Conditions									
Daylight								13	72.2%
Darkness								5	27.8%
Total								18	100.00%



Illinois Route 68 + Bateman Road
INTERSECTION IMPROVEMENT PROJECT

Mention that this is a handout

Focus is on the severe and angle crashes and injuries and addressing them

Angle crashes occurs when the front of one vehicle hits the side of another

Turning – crash during a turning movement

Front to Rear – rear end

The two primary causes for the angle, turning, and rear end crash types were:

- Failing to yield to right of way, and
- Failure to reduce speed to avoid crash
- One A-injury crash notes sight distance issues

HSM indicates the following contributing factors:

- Angle
 - Restricted sight distance
 - High approach speeds
 - Drivers running “stop” sign
- Turning
 - Restricted sight distance
- Rear-end
 - Restricted sight distance
 - Excessive speed

Of the 18 total crashes, 14 crashes (77.7%) occurred on dry pavement conditions

The Fatal crash was an angle collision (clear weather conditions, nighttime hours, dry road). Vehicle 1 northbound on Bateman Road, disobeyed the posted stop sign, and entered the intersection. Vehicle 2 westbound on IL 68 was struck by vehicle 1. Reported primary and secondary causes were failing to yield right of way and disregarding stop sign, respectively.

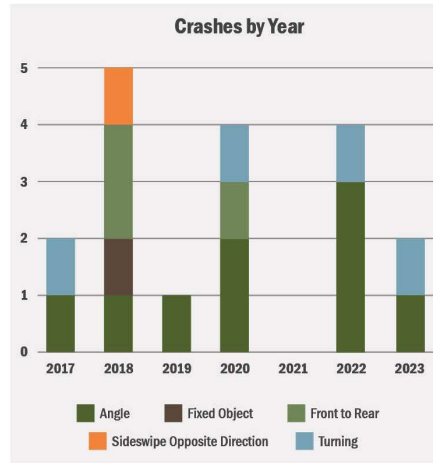
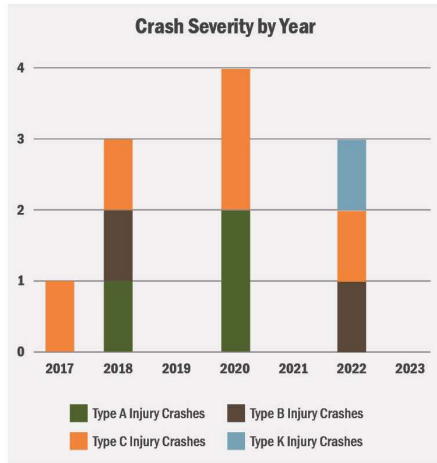
A crashes (3)

(Rainy weather, daylight hours, wet road) Vehicle 1 eastbound on IL 68 initiated a left turn. Vehicle 2 westbound on IL 68 was unable to stop due to wet pavement and collided with Vehicle 1. Following the initial impact, Vehicle 1 struck Vehicle 3, also westbound on IL 68. Reported primary and secondary causes were failure to reduce speed to avoid crash and following too closely, respectively.

(clear weather, daylight hours, dry road) Vehicle 1 southbound on Bateman Road stopped at the posted stop sign, then entered the intersection. Vehicle 2, traveling IL 68, struck Vehicle 1. Sight distance obstruction due to overgrown foliage was noted in the police report. Reported primary and secondary causes were failing to yield right of way and failure to reduce speed to avoid crash, respectively.

(clear weather, daylight hours, dry road) Vehicle 1 eastbound on IL 68. Vehicle 2 southbound on Bateman Road disobeyed the posted stop sign, entered the intersection, and struck Vehicle 1. Reported primary cause was failing to yield right of way

Existing Crash History



Illinois Route 68  Bateman Road
INTERSECTION IMPROVEMENT PROJECT



Existing Intersection



Illinois Route 68 + Bateman Road
INTERSECTION IMPROVEMENT PROJECT

Existing Intersection – Sight Distance



Illinois Department
of Transportation

Illinois Route 68 + Bateman Road
INTERSECTION IMPROVEMENT PROJECT

We want to hear from you



Illinois Department
of Transportation

Illinois Route 68  Bateman Road
INTERSECTION IMPROVEMENT PROJECT

We want to hear from you

- Feedback on local issues
 - Safety Concerns
 - Driver Experience



Illinois Route 68  Bateman Road
INTERSECTION IMPROVEMENT PROJECT

Workshop Break



Illinois Department
of Transportation

Illinois Route 68  Bateman Road
INTERSECTION IMPROVEMENT PROJECT

Alternatives Initially Considered



Illinois Department
of Transportation

Illinois Route 68  Bateman Road
INTERSECTION IMPROVEMENT PROJECT

Alternatives Initially Considered

- Low-Cost Measures



The examples above (warning signage, landscaping maintenance, speed tracking, and stop signs) are relatively minor improvements that can be installed at minimal cost.



Illinois Department
of Transportation

Illinois Route 68 + Bateman Road
INTERSECTION IMPROVEMENT PROJECT

- Advance intersection warning signs (IL 68) exist today
- Advance "Stop Ahead" warning signs (Bateman Rd) exist today
- Oversized STOP signs
- Flashing LED STOP signs
- Dynamic speed feedback signs (IL 68)
- Removal of any foliage that limits sight distance is going to be needed regardless of the improvement

Alternatives Initially Considered

- Low-Cost Measures
- Four Way / All Way Stop Controls*
- Traffic Signal Control*

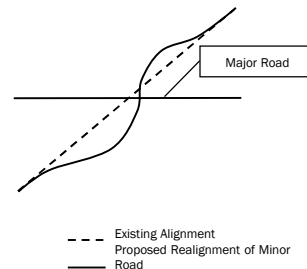


**Stop and Signal Controls do not meet current warrants identified in the Manual for Uniform Traffic Control Devices. Controls that do not meet MUTCD warrants cannot legally be installed.*

All way stop and traffic signals removed noting they do not meet MUTCD warrants

Alternatives Initially Considered

- Low-Cost Measures
- ~~Four Way / All Way Stop Controls*~~
- ~~Traffic Signal Control*~~
- Intersection Realignment



**Stop and Signal Controls do not meet current warrants identified in the Manual for Uniform Traffic Control Devices. Controls that do not meet MUTCD warrants cannot legally be installed.*



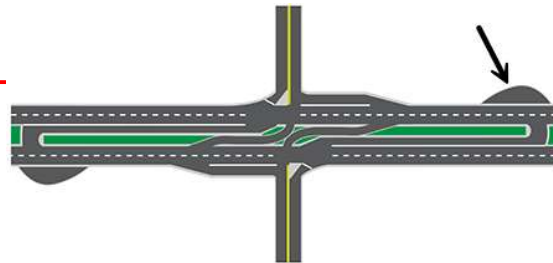
Illinois Route 68  Bateman Road
INTERSECTION IMPROVEMENT PROJECT

Realignment of the intersection may improve intersection sight distance but may not reduce angle crash types

- Realignment will improve sight distance, but
- Will not increase the gaps between cars on IL 68
- Drivers waiting on Bateman Rd may accept smaller gaps in traffic which can be a cause of angle and turning crashes

Alternatives Initially Considered

- Low-Cost Measures
- ~~Four Way / All Way Stop Controls*~~
- ~~Traffic Signal Control*~~
- ~~Intersection Realignment~~
- Restricted Crossing U-Turn (R-CUT)



**Stop and Signal Controls do not meet current warrants identified in the Manual for Uniform Traffic Control Devices. Controls that do not meet MUTCD warrants cannot legally be installed.*



Illinois Department
of Transportation

Illinois Route 68 + Bateman Road
INTERSECTION IMPROVEMENT PROJECT

A RCUT will force through or left turn maneuvers from Bateman Road to turn right then perform a U-Turn

- Will not improve gaps in IL 68 traffic
- Will require substantial ROW to complete bulb-outs in pavement to complete a U-Turn
- May increase crash potential from u-turning vehicles entering IL 68

Alternatives Initially Considered

- Low-Cost Measures
- ~~Four Way / All Way Stop Controls*~~
- ~~Traffic Signal Control*~~
- ~~Intersection Realignment~~
- ~~Restricted Crossing U Turn (R CUT)~~
- Roundabout



**Stop and Signal Controls do not meet current warrants identified in the Manual for Uniform Traffic Control Devices. Controls that do not meet MUTCD warrants cannot legally be installed.*

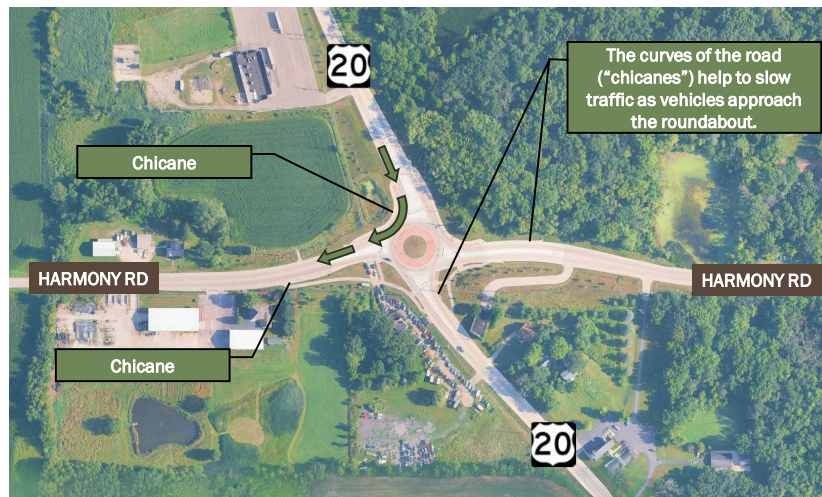


Illinois Route 68  Bateman Road
INTERSECTION IMPROVEMENT PROJECT

Roundabouts include horizontal geometrics forcing all vehicles to slow down before intersection

- Slower vehicles will provide better gaps in the traffic stream
- Slower vehicles reduce risk of injury
- Roundabouts eliminate angle crash opportunities

US 20 at Harmony Roundabout



Illinois Department
of Transportation

Illinois Route 68 + Bateman Road
INTERSECTION IMPROVEMENT PROJECT

Discuss Safety Performance Measures (SPM) here

Roundabouts include horizontal geometrics forcing all vehicles to slow down before intersection

- #1 thing is reduced speed to go through roundabout which will reduce injury potential
- Slower vehicles will provide better gaps in the traffic stream
- Slower vehicles reduce risk of injury
- Roundabouts eliminate angle crash opportunities

US 20 at Harmony Roundabout



Illinois Route 68 + Bateman Road
INTERSECTION IMPROVEMENT PROJECT

Roundabouts include horizontal geometrics forcing all vehicles to slow down before intersection

- #1 thing is reduced speed to go through roundabout which will reduce injury potential
- Slower vehicles will provide better gaps in the traffic stream
- Slower vehicles reduce risk of injury
- Roundabouts eliminate angle crash opportunities

US 20 at Harmony Roundabout

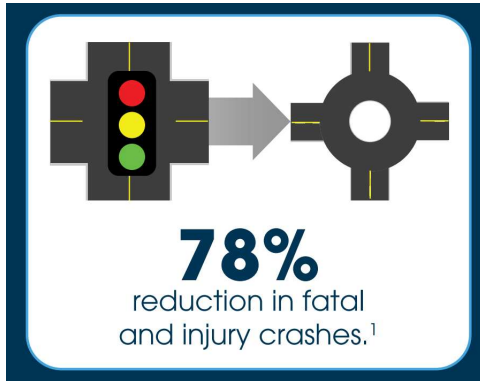


Illinois Route 68 + Bateman Road
INTERSECTION IMPROVEMENT PROJECT

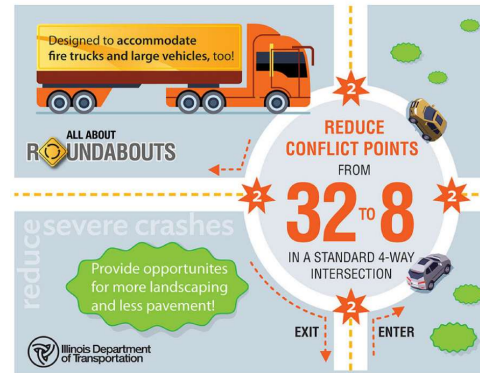
Roundabouts include horizontal geometrics forcing all vehicles to slow down before intersection

- #1 thing is reduced speed to go through roundabout which will reduce injury potential
- Slower vehicles will provide better gaps in the traffic stream
- Slower vehicles reduce risk of injury
- Roundabouts eliminate angle crash opportunities

Roundabout Safety



¹ (CMF ID: 211,226) AASHTO. The Highway Safety Manual, American Association of State Highway Transportation Professionals, Washington, D.C., (2010)



Illinois Route 68 + Bateman Road
INTERSECTION IMPROVEMENT PROJECT

Roundabouts include horizontal geometrics forcing all vehicles to slow down before intersection

- #1 thing is reduced speed to go through roundabout which will reduce injury potential
- Slower vehicles will provide better gaps in the traffic stream
- Slower vehicles reduce risk of injury
- Roundabouts eliminate angle crash opportunities

What's Next?



Illinois Department
of Transportation

Illinois Route 68  Bateman Road
INTERSECTION IMPROVEMENT PROJECT

Typical IDOT Project Process



*Phase I is currently funded

**Funding for Phase II and III is not currently included in the Department's FY 2026-2031 Proposed Highway & Multimodal Improvement Program.



Illinois Route 68 + Bateman Road
INTERSECTION IMPROVEMENT PROJECT

Phase I: Preliminary Engineering & Environmental Studies

- Identifies issues and concerns
- Proposes potential solutions
- Engages the public for input

Phase II: Contract Plan Preparation & Land Acquisition

- Develops detailed construction plans
- Acquires necessary land to complete construction

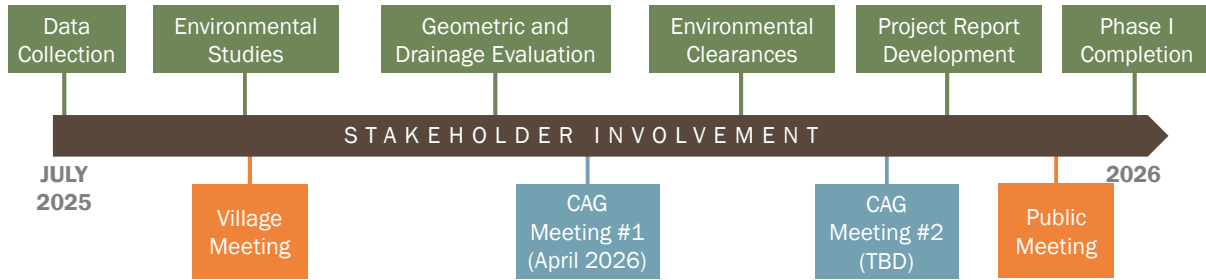
Phase III: Construction

- Most visible phase to the public
- Builds the design completed by Phase I and enhanced by Phase II

Phase I is currently funded

Funding for Phase II and III is not currently included in the Department's FY 2026-2031 Proposed Highway & Multimodal Improvement Program.

Phase I Schedule



Illinois Route 68  Bateman Road
INTERSECTION IMPROVEMENT PROJECT

Next Steps

- Summarize input from CAG
- Incorporate stakeholder input
- Continue roundabout concepts



Illinois Route 68  Bateman Road
INTERSECTION IMPROVEMENT PROJECT

How to Stay Informed

- Go to the Project website: https://idot.click/IL68_Bateman
- Participate at the CAG meetings
- Attend a future Public Meeting
- Email us at: IL68atBateman@primeraeng.com



Illinois Route 68  Bateman Road
INTERSECTION IMPROVEMENT PROJECT

Questions?



Illinois Department
of Transportation

Illinois Route 68  Bateman Road
INTERSECTION IMPROVEMENT PROJECT

Thank you!

PROJECT WEBSITE

https://idot.click/IL68_Bateman

CONTACT US

Lori Brown at (847) 705-4477.

SHARE YOUR INPUT

IL68atBateman@primeraeng.com



Illinois Route 68  Bateman Road
INTERSECTION IMPROVEMENT PROJECT