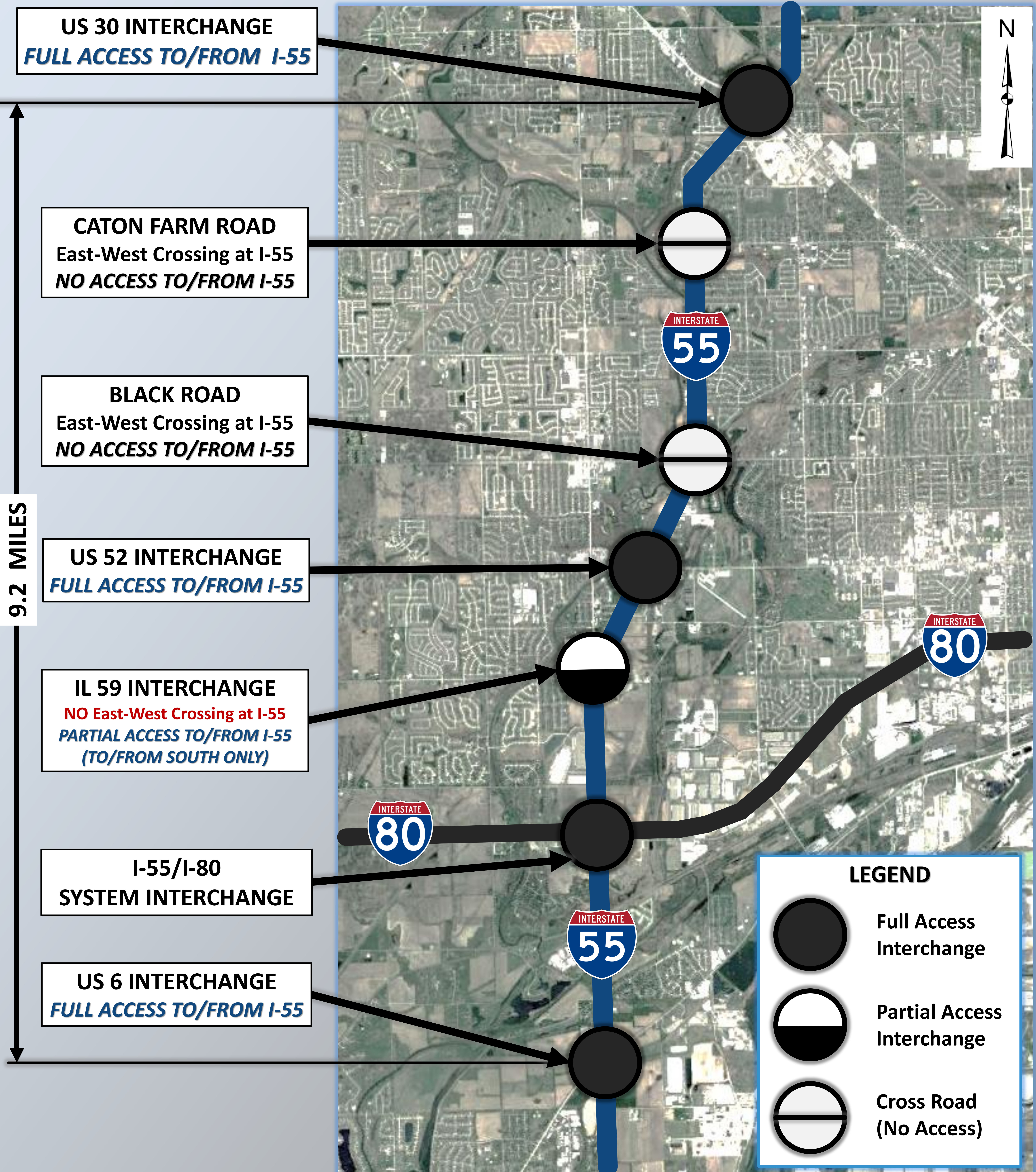




I-55 at IL 59 Access Project



I-55 ACCESS INVENTORY MAP





3-YEAR CRASH HISTORY

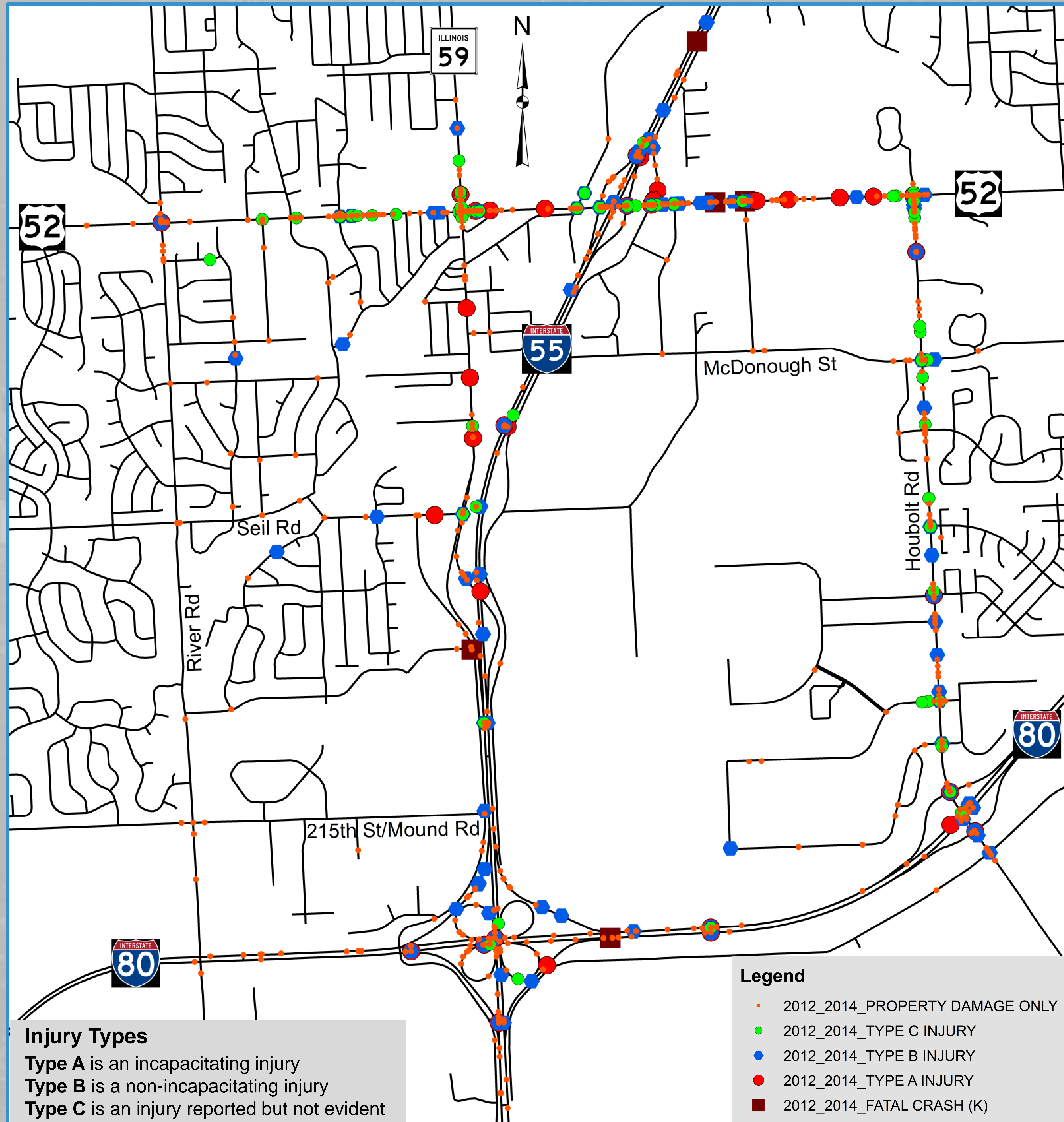
2012-2014



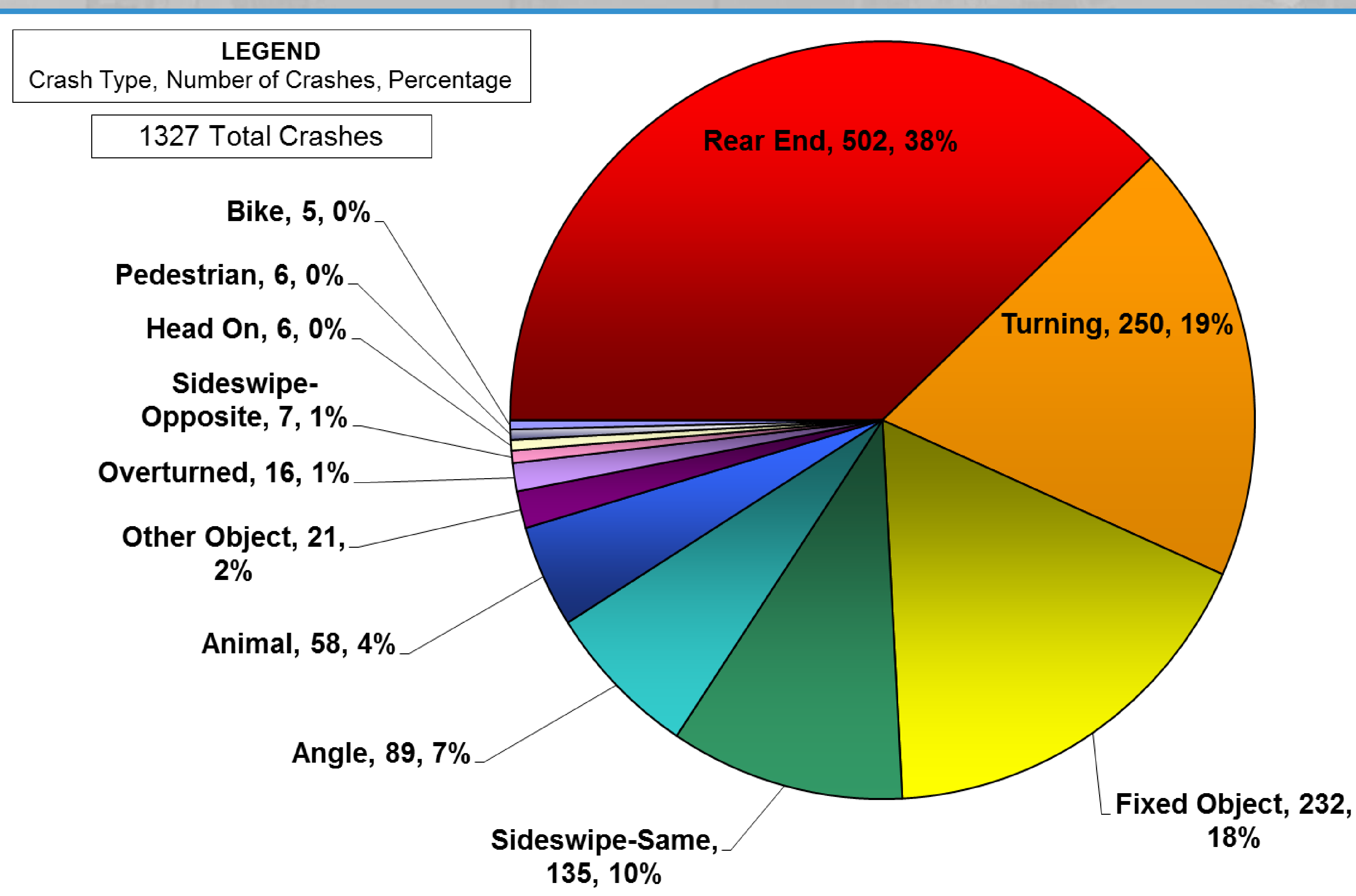
QUICK CRASH FACTS

- **1,327 Total Crashes** occurred within the study area in a 3-Year Period
- **5 Crashes** Involved a Fatality
- **49 Crashes** Involved a Type A / Incapacitating Injury
- **I-55 and US 52** Contain High Crash / 5 Percent Locations
- **Most common** crash types are rear-end, turning and fixed object
- **11 crashes** involved a pedestrian or a bicyclist

Crashes by Location and Severity

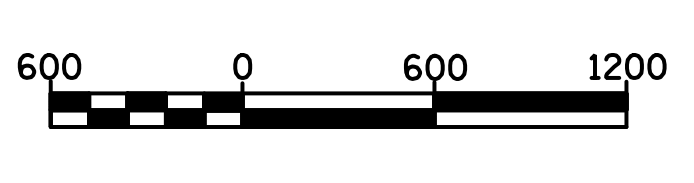
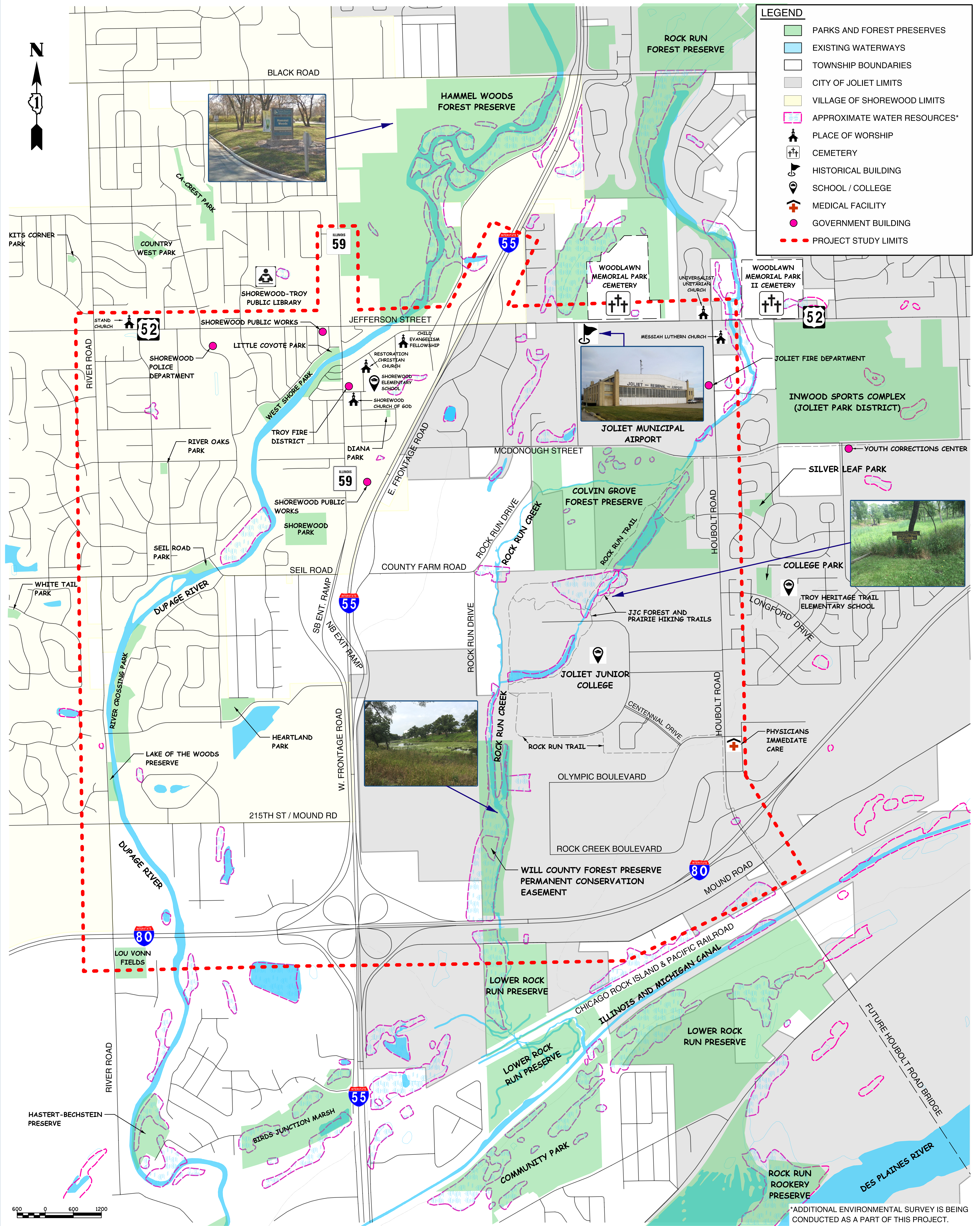


Total Crashes By Type





LEGEND	
	PARKS AND FOREST PRESERVES
	EXISTING WATERWAYS
	TOWNSHIP BOUNDARIES
	CITY OF JOLIET LIMITS
	VILLAGE OF SHOREWOOD LIMITS
	APPROXIMATE WATER RESOURCES*
	PLACE OF WORSHIP
	CEMETERY
	HISTORICAL BUILDING
	SCHOOL / COLLEGE
	MEDICAL FACILITY
	GOVERNMENT BUILDING
	PROJECT STUDY LIMITS



*ADDITIONAL ENVIRONMENTAL SURVEY IS BEING CONDUCTED AS A PART OF THIS PROJECT.



I-55 at IL 59 Access Project

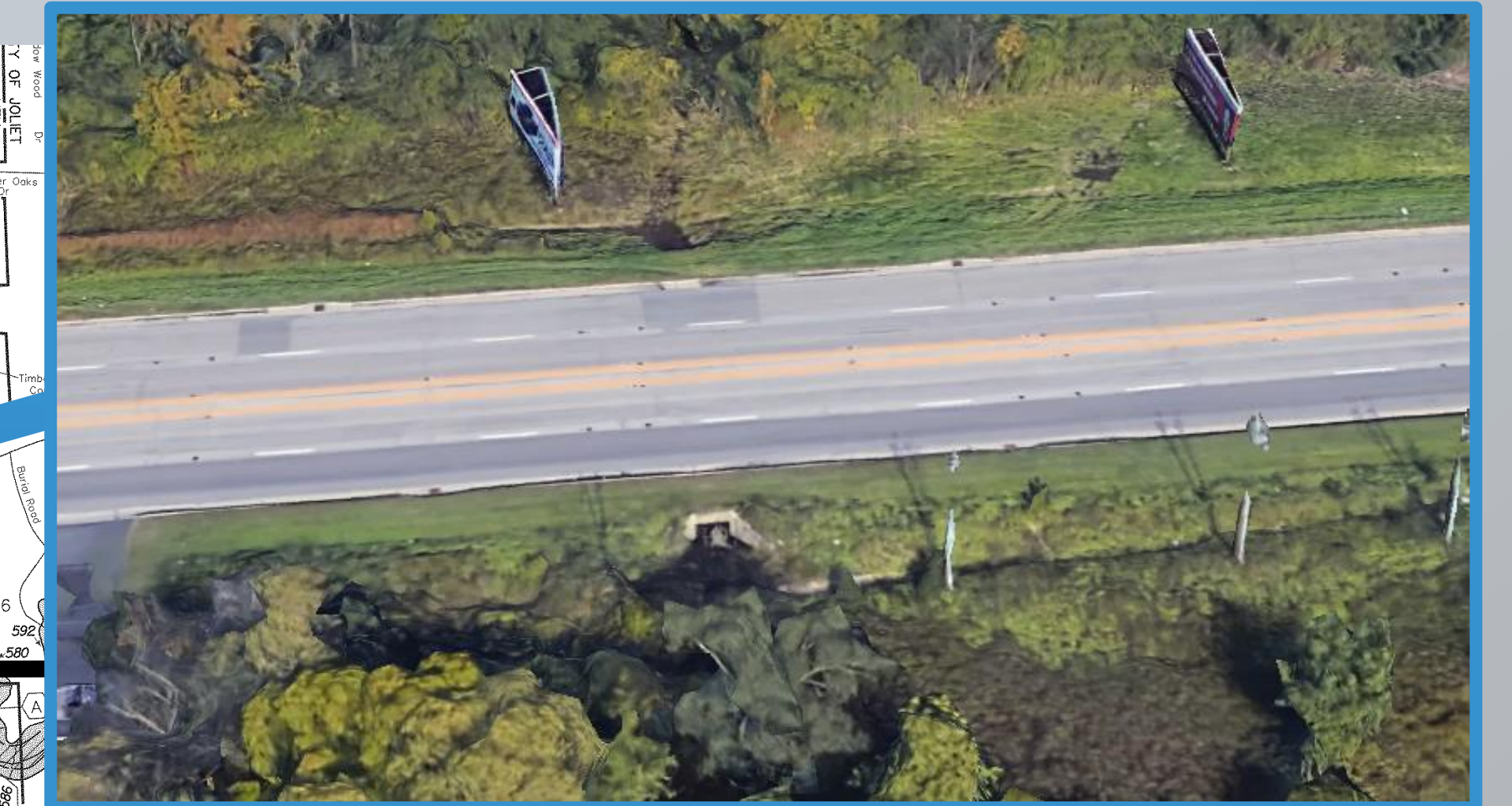
EXISTING FLOOD PLAIN CROSSINGS



US 52 at
DuPage
River



US 52 at
Rock Run
Slough



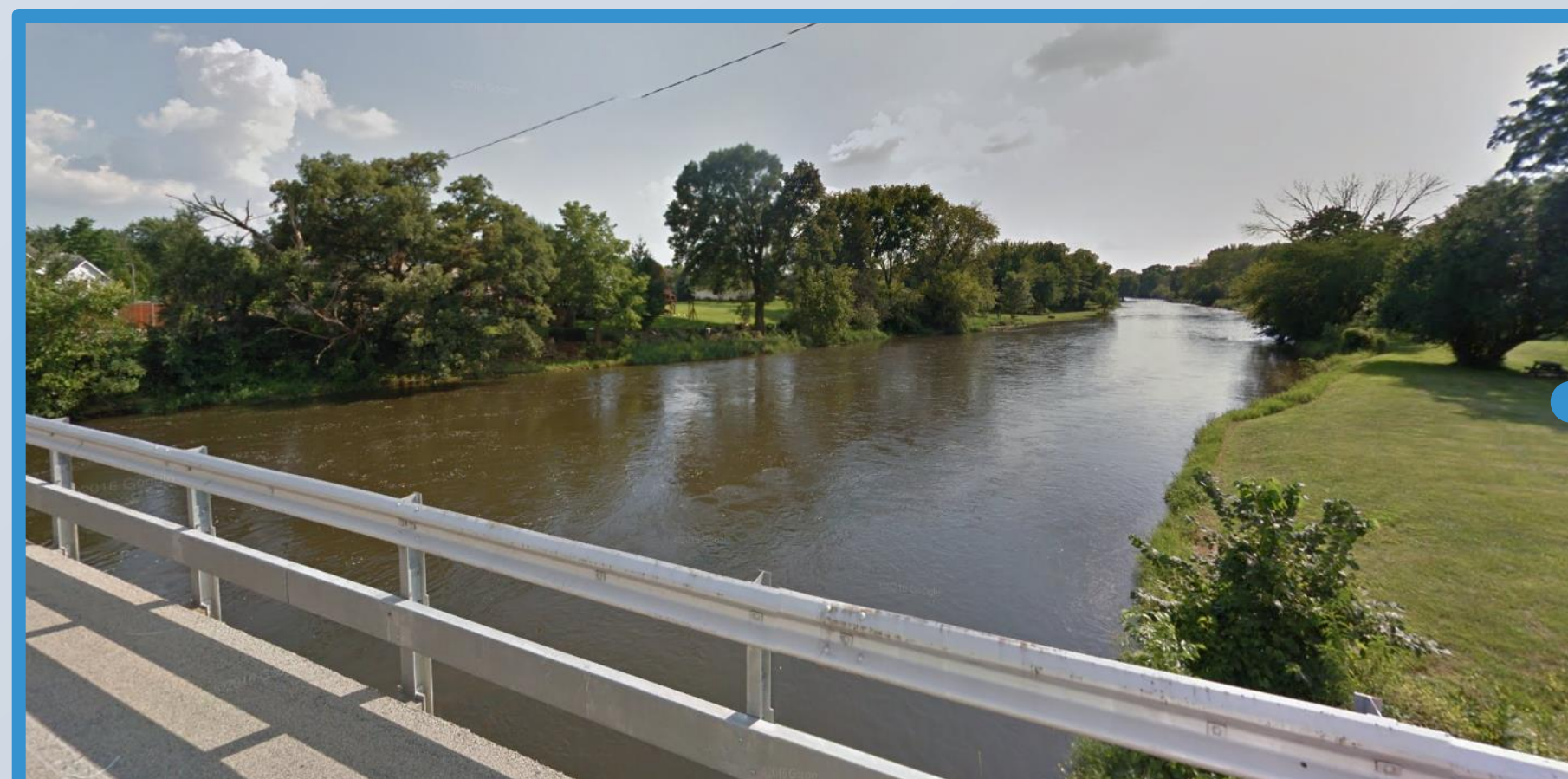
IL 59 at DuPage River



Houbolt Rd at Rock Run



Seil Rd at DuPage River



McDonough St at Rock Run



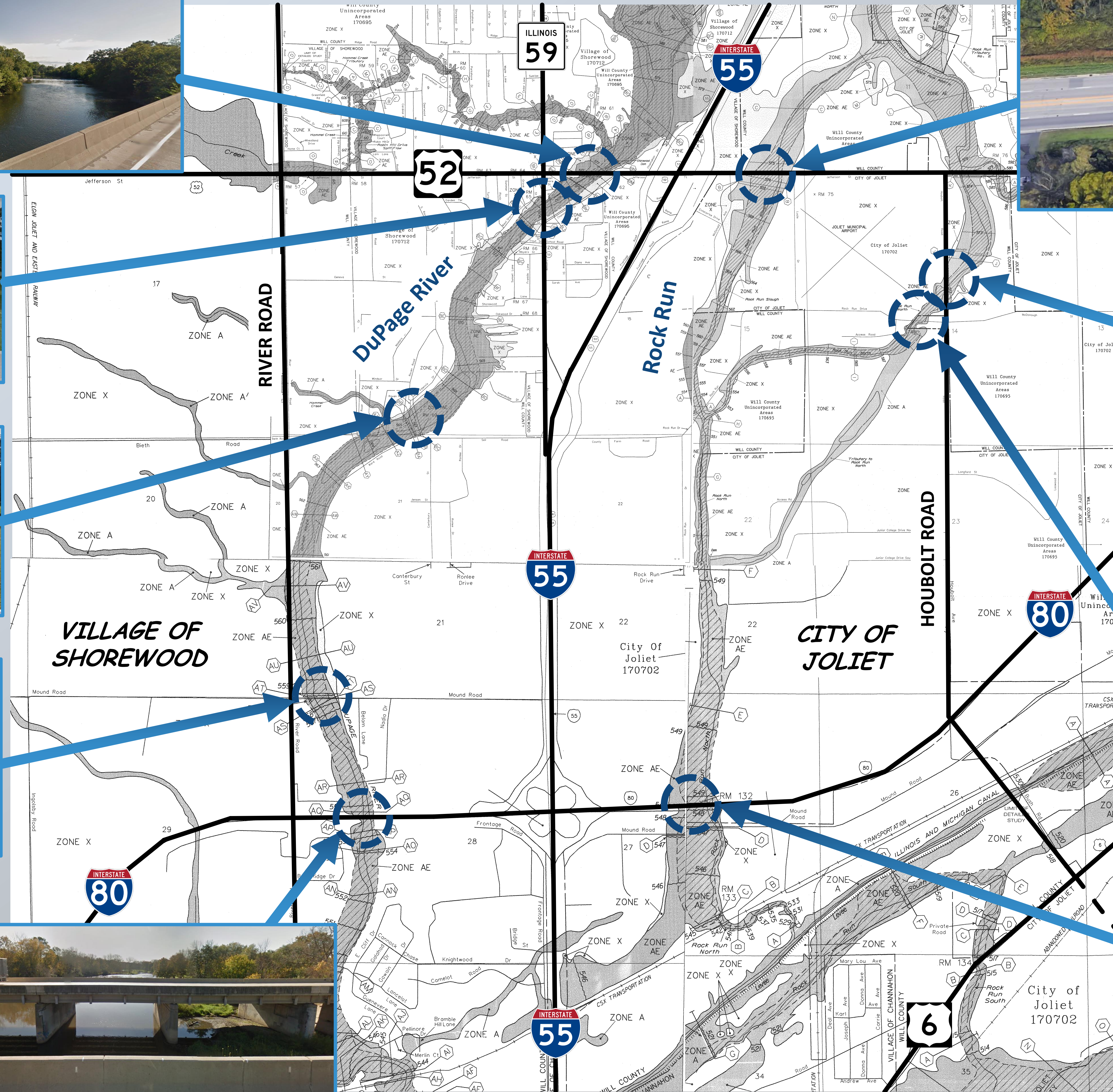
215th St / Mound Rd at
DuPage River



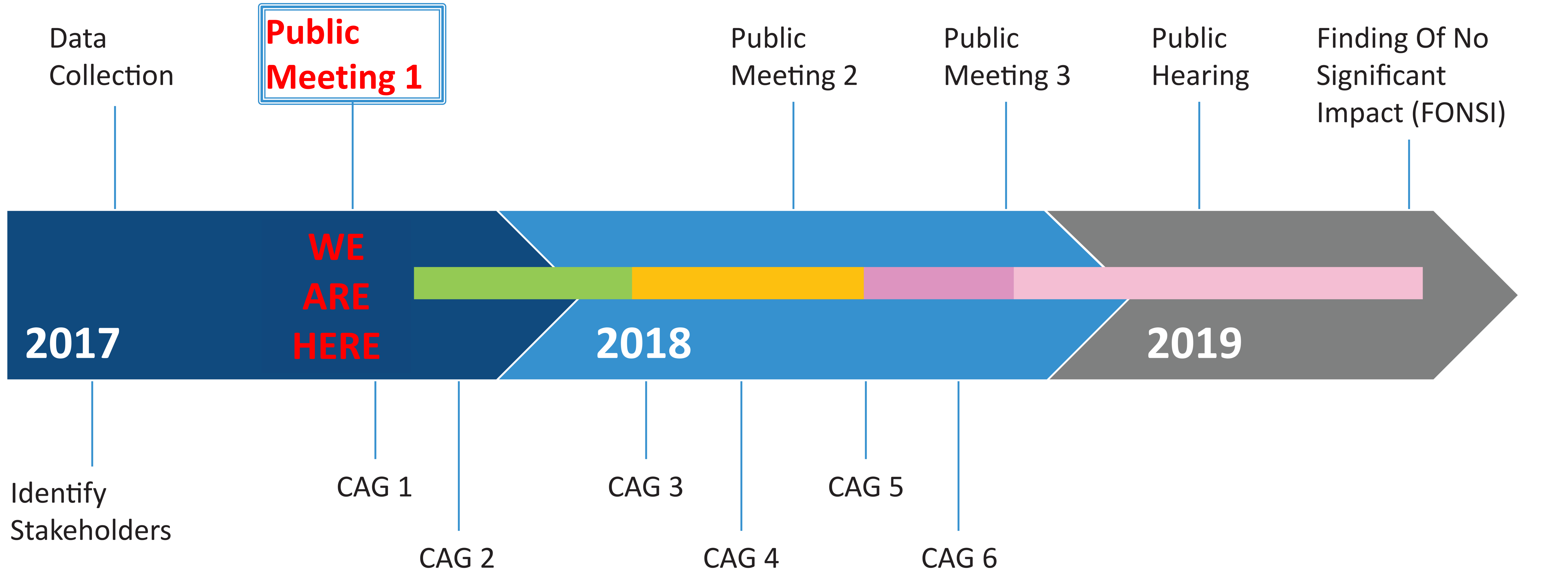
I-80 at Rock Run





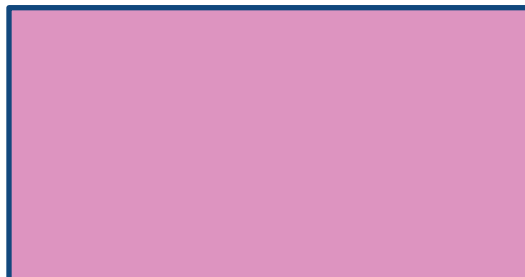

I-80 at
DuPage
River



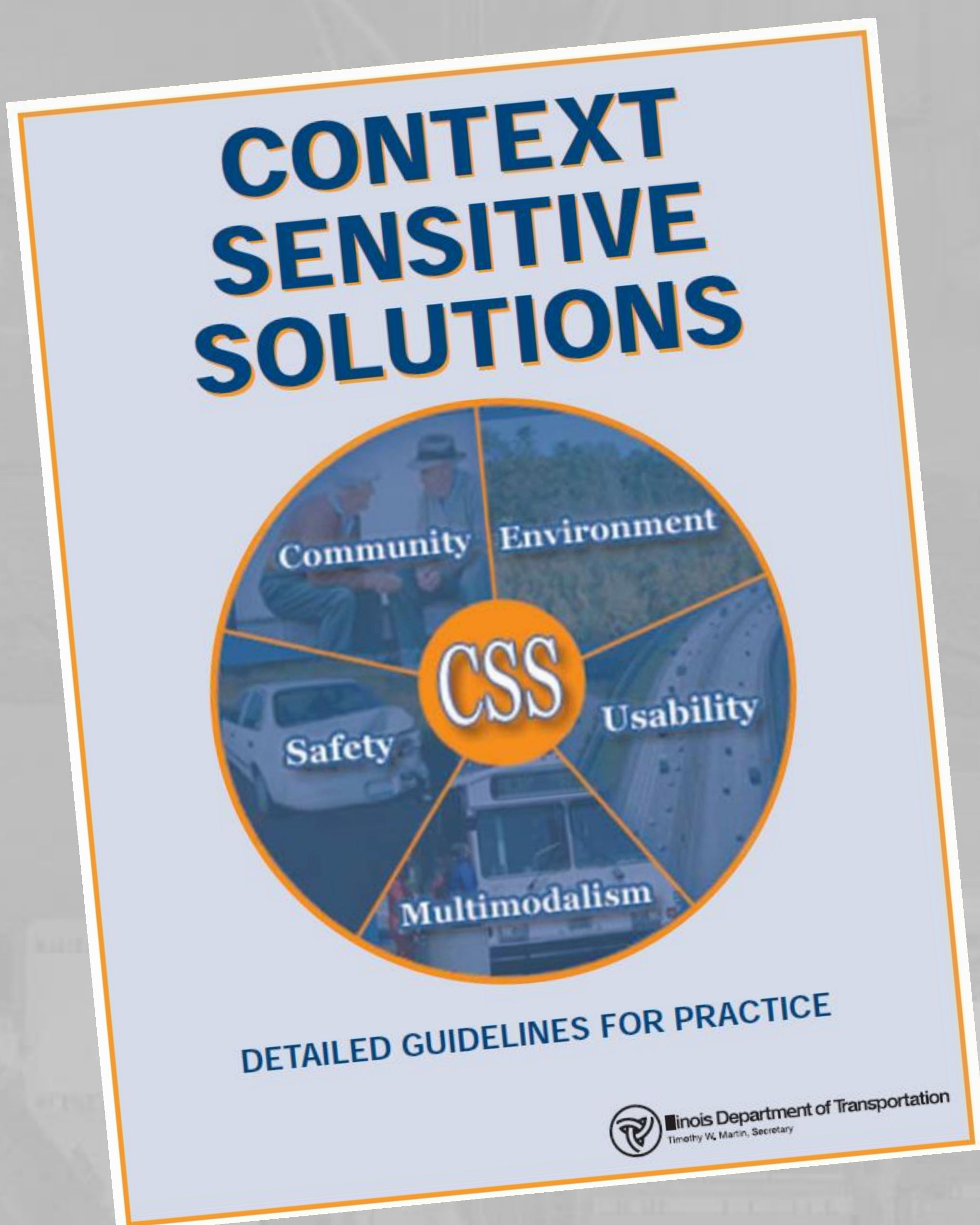
PROJECT SCHEDULE



LEGEND

-  DEVELOP PURPOSE AND NEED
-  ALTERNATIVES ANALYSIS
-  REFINE ALTERNATIVES & SELECT PREFERRED ALTERNATIVE
-  PREPARE AND REFINE ENVIRONMENTAL ASSESSMENT (EA) AND ALL PROJECT REPORTS

CONTEXT SENSITIVE SOLUTIONS (CSS)



CONTEXT SENSITIVE SOLUTIONS
is a collaborative, interdisciplinary and holistic approach to the development of transportation projects.

CONSENSUS

- When a majority of stakeholders agree on an issue or solution.
- Dissenting stakeholders agree their input has been heard and considered.
- Consensus is **NOT** expected to achieve total agreement from **ALL** parties.
- Consensus does not compromise operations and safety to reach agreement.
- All stakeholders understand transportation agency is the final decision maker.



CONTEXT

- All elements related to the people and place where a project is located.
- Includes visible element such as environmental and historical resources.
- Includes invisible elements such as community values, traditions and/or expectations.



COMMUNITY ADVISORY GROUP (CAG)

WHAT IS THE CAG?

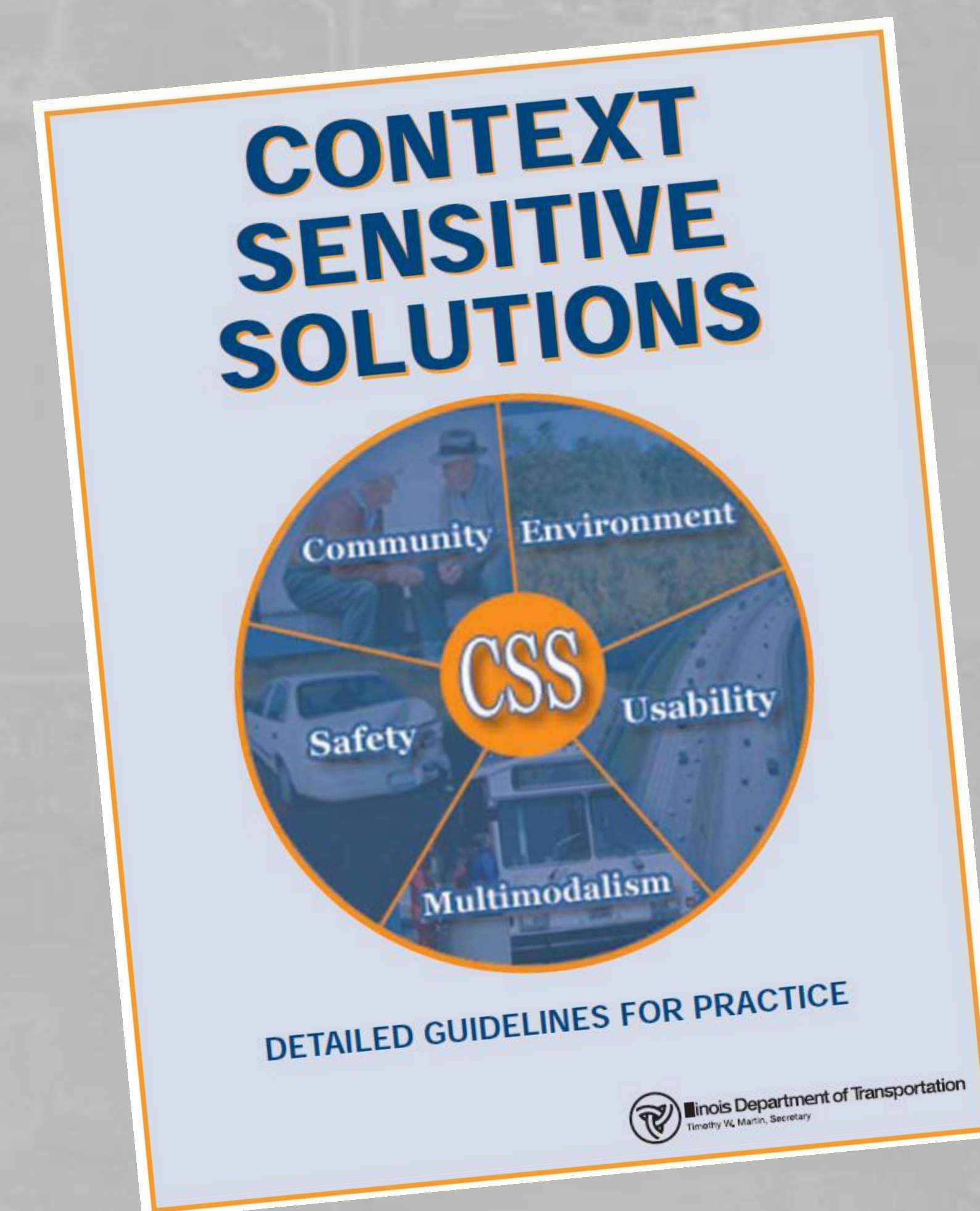
- Small working group that assists the Project Study Group in identifying project elements that should be given additional consideration.
- Made up of volunteers and stakeholders who would like to be part of the study process.

WHO CAN JOIN THE CAG?

- Residents
- Local Businesses
- Local Agencies
- Forest Preserve District
- Park District
- Environmental Interest Groups
- Neighborhood Groups
- Homeowners Association
- Places of Worship
- School Districts
- Transportation Providers
- Many More – Anyone with an Interest!

WHAT ARE CAG MEMBER EXPECTATIONS?

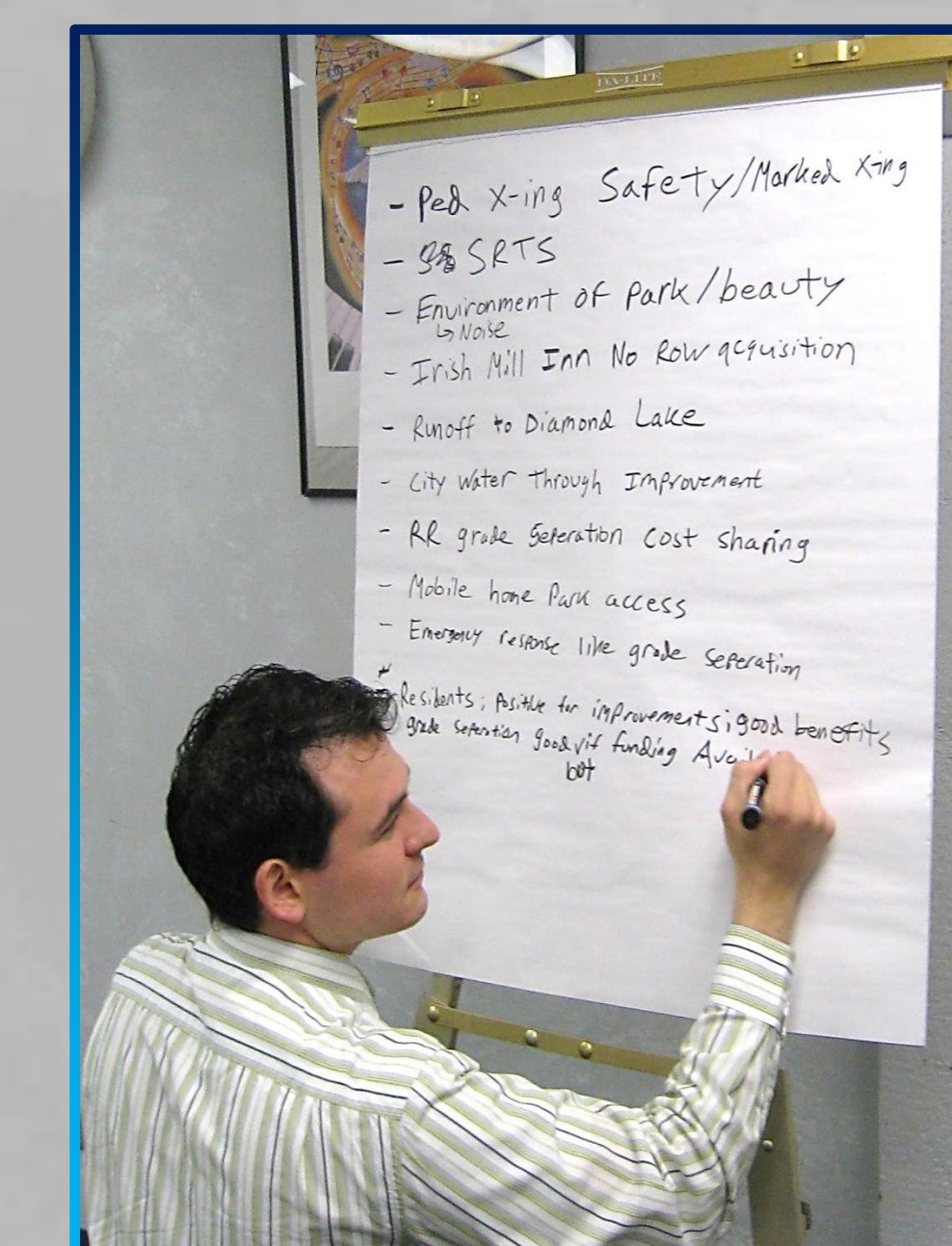
- Attend CAG Meetings and Participate In Group Workshop Activities
 - Total of 6 Weekday Workshops Over 2 Years
 - Meetings Typically Last About 2 Hours
- Work Together To Find Agreement or General Consensus Among All Interests



WORKSHOP GOALS



Receive Input



Develop Alternatives



Identified Issues / Concerns / Solutions

