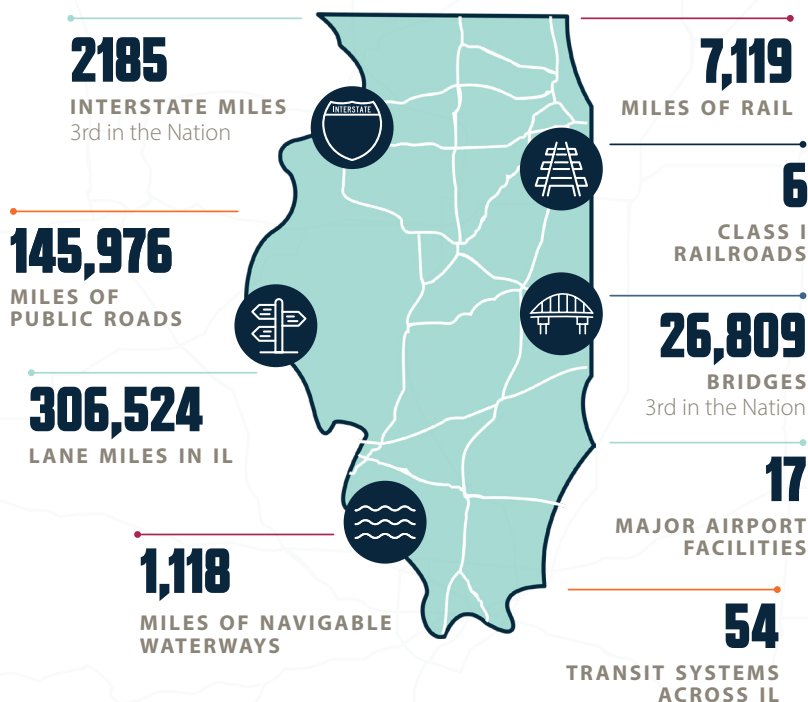




DATA DRIVEN DECISIONS FOR ILLINOIS



The Illinois Department of Transportation (IDOT) developed the Data-Driven Decisions tool. The tool helped IDOT make investment decisions for capacity projects throughout the State. The effort is to select projects which add the most value to the State and its communities, while at the same time increasing transparency in the project selection process. The concept of Data-Driven Decisions for project selection is used throughout the nation and encouraged by the U.S. Department of Transportation. The Department evaluated 34 projects for inclusion in the State Fiscal Year 2023-2028 Highway Improvement Program (MYP).



WHY was the Tool Developed?

Illinois is one of the largest economies in the United States and that is greatly attributed to the vast transportation network the State offers. Transportation funding is limited and a majority of IDOT's funds are allocated toward system maintenance projects and not capacity projects. In order to increase transparency and select projects within an enhanced transparent manner IDOT developed the tool.

HOW was the Tool Developed?

Development of the tool went through a rigorous process with IDOT utilizing literature, standards and expert knowledge throughout the state and across the nation. IDOT developed the tool with guidance from the following:

- Existing planning documents, including IDOT's Long-Range Transportation Plan
- Federal resources urging the use of performance based project selection set forth by Moving Ahead for Progress in the 21st Century Act (MAP-21)
- Counsel from state and national experts including transportation stakeholders and the Federal Highway Administration
- Input from the local and regional leaders, and the public
- Accepted industry metrics

WHAT is the Tool?

IDOT developed a process which will select projects based on five goal areas and eleven selection criteria. These goals and criteria will help IDOT make investment decisions on capacity projects in a transparent and equitable manner for review, input and refinement before the Tool is finalized.

Traffic Operations/ Congestion

CRITERIA

Annual Average Daily Traffic (AADT)

A measure of the mean traffic volume across all days for a year for a given location along a road

CRITERIA

Change in Annual Vehicle Miles Traveled (AVMT)

A measure of the amount of vehicular travel in a geographic region over a given period of time

CRITERIA

Travel Time Index

The ratio of the travel time during the peak period to the time required to make the same trip at free-flow speeds.

Economic Development

CRITERIA

National Highway Freight Network

Is the project on the National Highway Freight Network as defined by the Federal Highway Administration and the FAST Act.

CRITERIA

Major Development

Does the project support access to a major development?

CRITERIA

Intermodal Accessibility

Is there an intermodal facility within 3 miles of the project?

Regional Rating

CRITERIA

Subjective portion allowing regional input, to consider local factors which may not be shown in data

- Allows for input from IDOT district staff on projects
- IDOT district staff work directly with local municipalities, counties and Metropolitan Planning Organizations

Safety

CRITERIA

Crash Frequency

A measure of the number of crashes occurring within a specific jurisdiction, on a roadway segment, or at an intersection.

Environmental Impacts/ Livability

CRITERIA

Equity

This performance measure indicates a project's potential ability to positively impact disadvantaged communities. The measure examines travel volumes from disadvantaged communities, and proximity of the project to disadvantaged neighborhoods.

CRITERIA

Level of Environmental Impact Analysis Required

How much will this project potentially affect the environment?

- Categorical Exclusion (CE)
- Environmental Assessment (EA) / Finding of No Significant Impacts (FONSI)
- Environmental Impact Statement (EIS)

CRITERIA

Resiliency

If a project has been impacted by an emergency event in the last 20 years

CRITERIA

Emissions

This performance measure indicates a project's potential ability to reduce harmful vehicle emissions and improve overall air quality

Input Received

The Department conducted outreach in the fall of 2021 and based on that have made updates to the tool. Documentation of how the tool works, lessons learned, and the outcome of comments is available on our website at Data-Driven Decisions Webpage. This tool will remain an iterative process, feel free to continue to provide feedback by contacting us at DOT.STIP@Illinois.gov