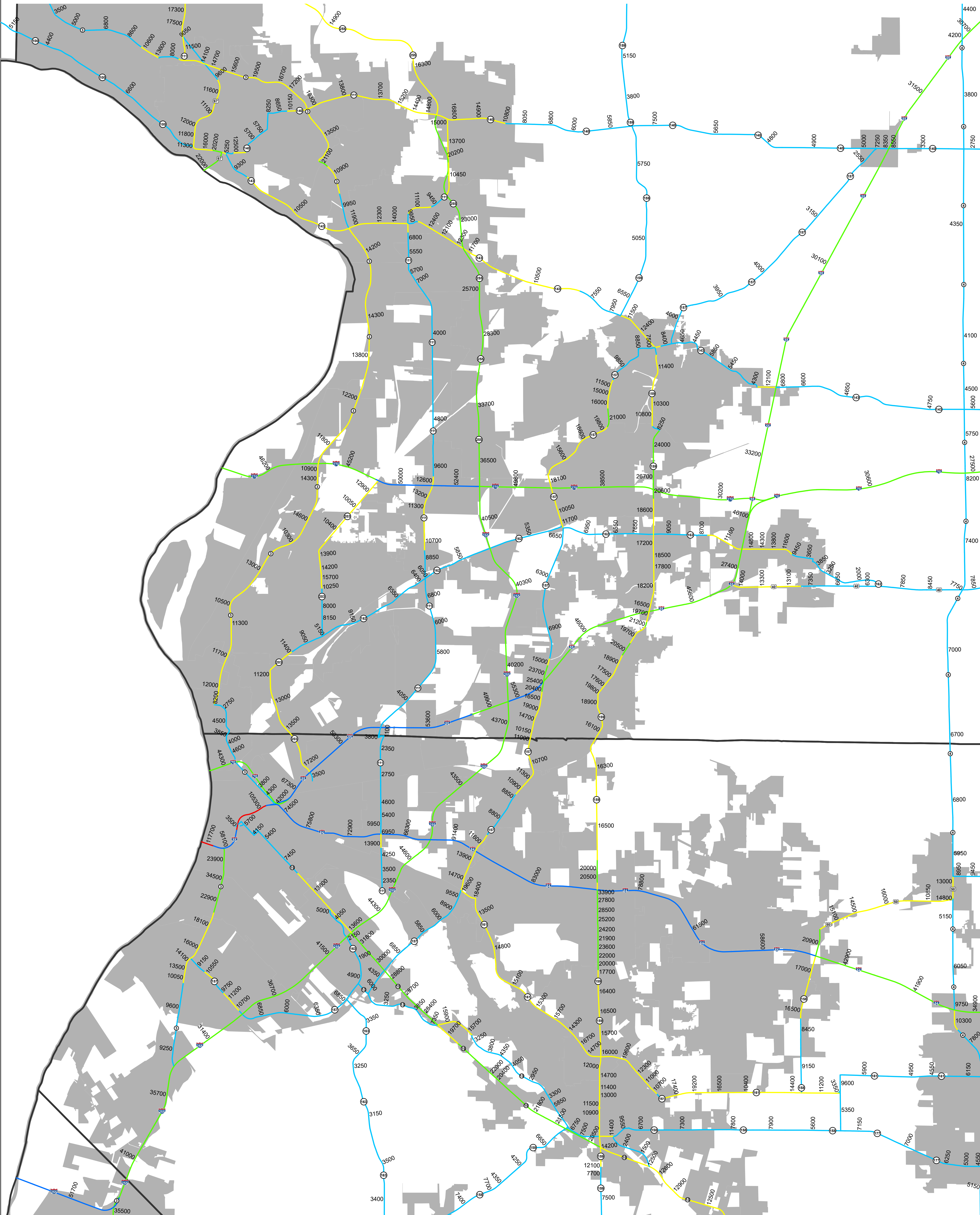


2023 ANNUAL AVERAGE DAILY TOTAL TRAFFIC

STATE PRIMARY SYSTEM

City of East Saint Louis, Illinois and Vicinity



LEGEND
Annual Average 24-Hour Traffic Volumes

- 0 - 9,999
- 10,000 - 19,999
- 20,000 - 49,999
- 50,000 - 99,999
- 100,000 and Over

Marked Route Symbols

- Interstate
- US
- STATE

Towns
County Boundaries
District Boundaries



**PREPARED BY THE
ILLINOIS DEPARTMENT OF TRANSPORTATION
OFFICE OF PLANNING AND PROGRAMMING**

Additional traffic volumes on the State Primary System and unmarked routes are available on the Annual Average Daily Traffic Counts GIS application, which can be found at IDOT's web site <http://www.gettingaroundillinois.com/>

