



# **CREATE Program**

***Chicago Region Environmental and Transportation  
Efficiency (CREATE) Program***

## **Overview**

***April 2019***

# What is CREATE?

---

A \$4.6 billion Public-Private Partnership (PPP) designed to improve transportation flow through Chicago focusing on:

- Increased capacity, speed and reliability for freight train traffic
- Separation of freight and commuter trains at 6 key junctions
- Elimination of 25 road/rail grade crossings (grade separations)

CREATE is a cooperative project involving:

- US Department of Transportation (FHWA & FRA)
- Illinois Department of Transportation (IDOT)
- Chicago Department of Transportation (CDOT)
- Cook County
- 6 major North American freight railroads and 2 switching railroads
- 2 passenger railroads (Amtrak and Metra)

# CREATE Partners



Illinois Department of Transportation



ASSOCIATION OF  
AMERICAN RAILROADS



CHICAGO DEPARTMENT  
OF TRANSPORTATION



BUILDING AMERICA®



**BNSF**  
RAILWAY

**Metra**

**NS**  
NORFOLK SOUTHERN®

**AMTRAK®**



**CP CN**





# Why CREATE?

---

- Freight rail trade (by value) within Chicago will more than double from 2012 to 2045\*
- Passenger, freight and motorist delays are experienced daily on the current system
- The region must improve freight movement and mitigate negative impacts
- Freight movements in Chicago are a **NATIONAL and INTERNATIONAL** issue, not just a regional one

*"Global trade follows the path of least resistance. It will go where there are the fewest impediments." -UPS*

\*Source: US DOT Freight Analysis Framework 4.0

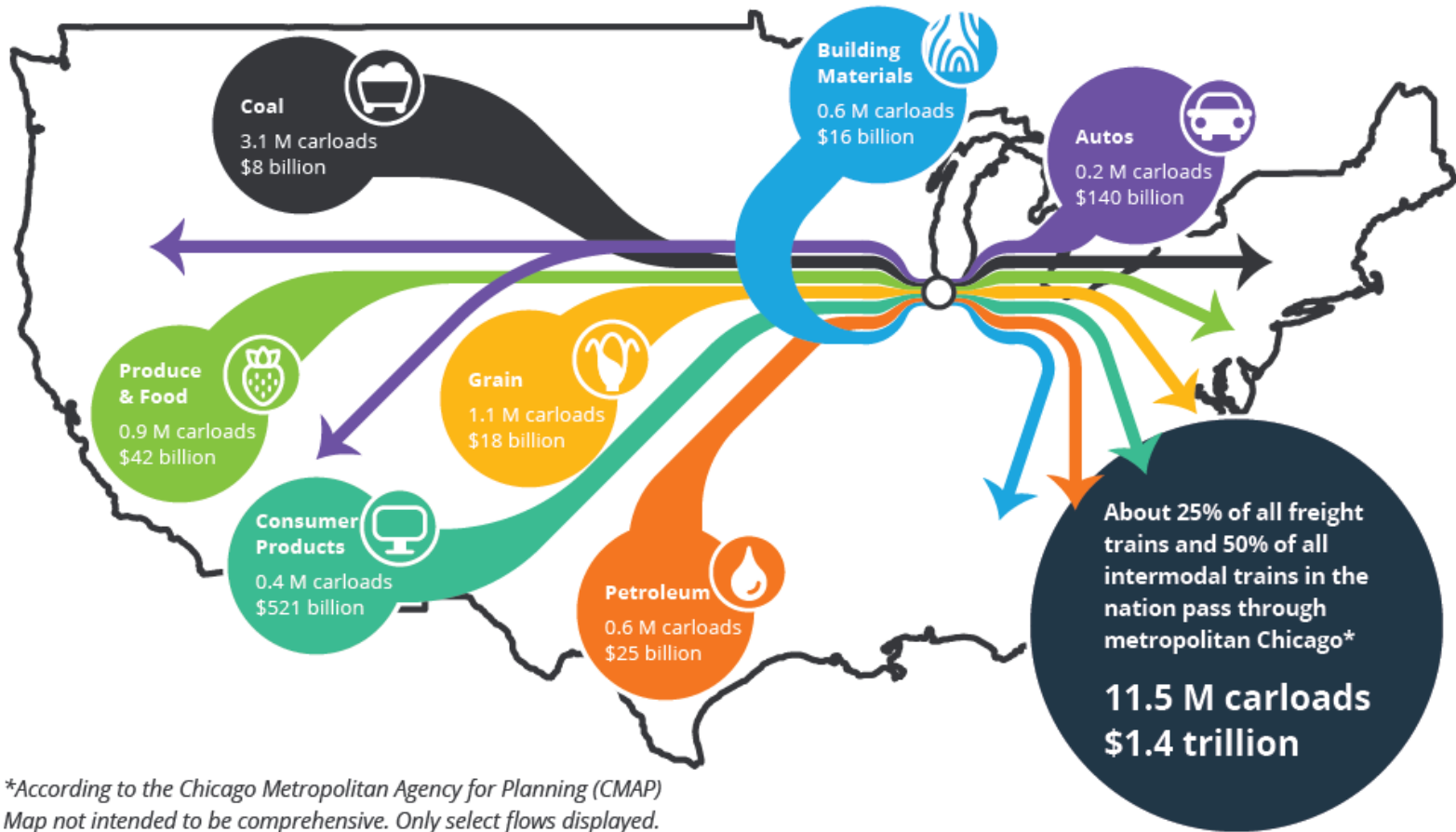
# The U.S. Rail Network Depends on Chicago

- 25 percent of all U.S. rail traffic touches Chicago
- 46 percent of all intermodal units in the U.S. touch Chicago
- 54 percent of intermodal units to/from the ports of **Seattle/Tacoma** touch Chicago
- 26 percent of intermodal units to/from **Los Angeles/Long Beach** touch Chicago



Source: 2006 Waybill Sample, based on traffic analysis by ALK Assoc.

# CREATE: Keeping the Nation's Economy Moving



*\*According to the Chicago Metropolitan Agency for Planning (CMAP)  
Map not intended to be comprehensive. Only select flows displayed.*



# CREATE Program – 70 Projects

---

- 25 road/rail grade separations
- 6 passenger/freight rail grade separations
- Railroad projects to improve rail infrastructure and upgrade technologies
- Viaduct improvement program
- Grade crossing safety enhancements
- Rail operations and visibility improvements



# Four Corridors

- Passenger Corridors
- East-West Corridor
- Beltway Corridor
- Western Ave. Corridor





# Project Status

---

Completed projects

29

Projects under construction (Phase III)

6

Projects in final design (Phase II)

5

Projects in environmental review (Phase I)

11

Remaining projects

19



# 70 CREATE Projects → 30-Year Benefits of **\$31.5 Billion**

## Rail Benefits

### Economic Growth

Chicago can accommodate growth in passenger and freight trains

### Fewer Delays

Reduced delay to passenger and freight trains

### Cost Savings

Reduced shipping costs may be passed on to consumers

### Increased Safety

Elimination of rail – roadway conflicts at 25 grade crossing sites

## Roadway Benefits

### Fewer Delays

Reduced delay to vehicles from eliminating 25 grade crossings

### Sustainability

Reduced fuel consumption and emissions

### Reduced Congestion

Fewer trucks on the roadways

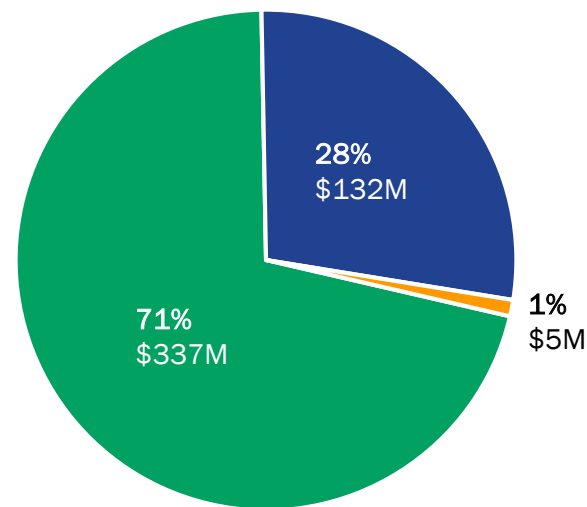
# INFRA Grant Award – 75<sup>th</sup> St. CIP

The **\$132 million** federal INFRA funding closes the gap and pushes this next phase of the project toward the finish line

The total **\$474 million** funds design of the entire 75th St. CIP, construction of two 75<sup>th</sup> St. CIP projects and construction of the Argo BRC Connection



*Forest Hill Junction (P3)*

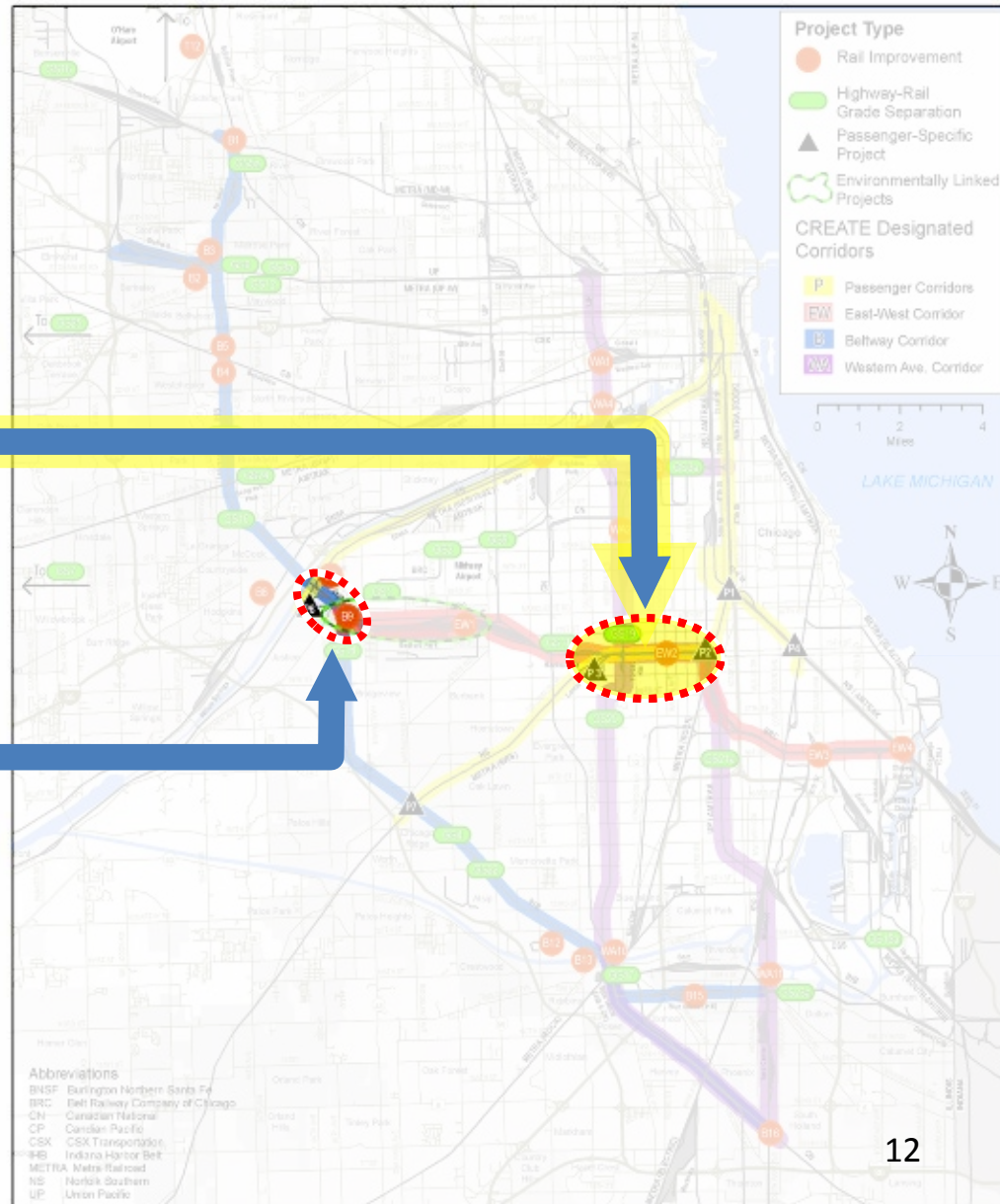


■ CREATE Partners ■ INFRA ■ Other Federal

# INFRA Grant Award – 75<sup>th</sup> St. CIP

**75<sup>th</sup> St. CIP**  
(design and partial construction)

**Argo Connections**  
(construction)





# 75<sup>th</sup> Street Corridor Improvement Project

Design  
Construction

**GS19**



**P3**



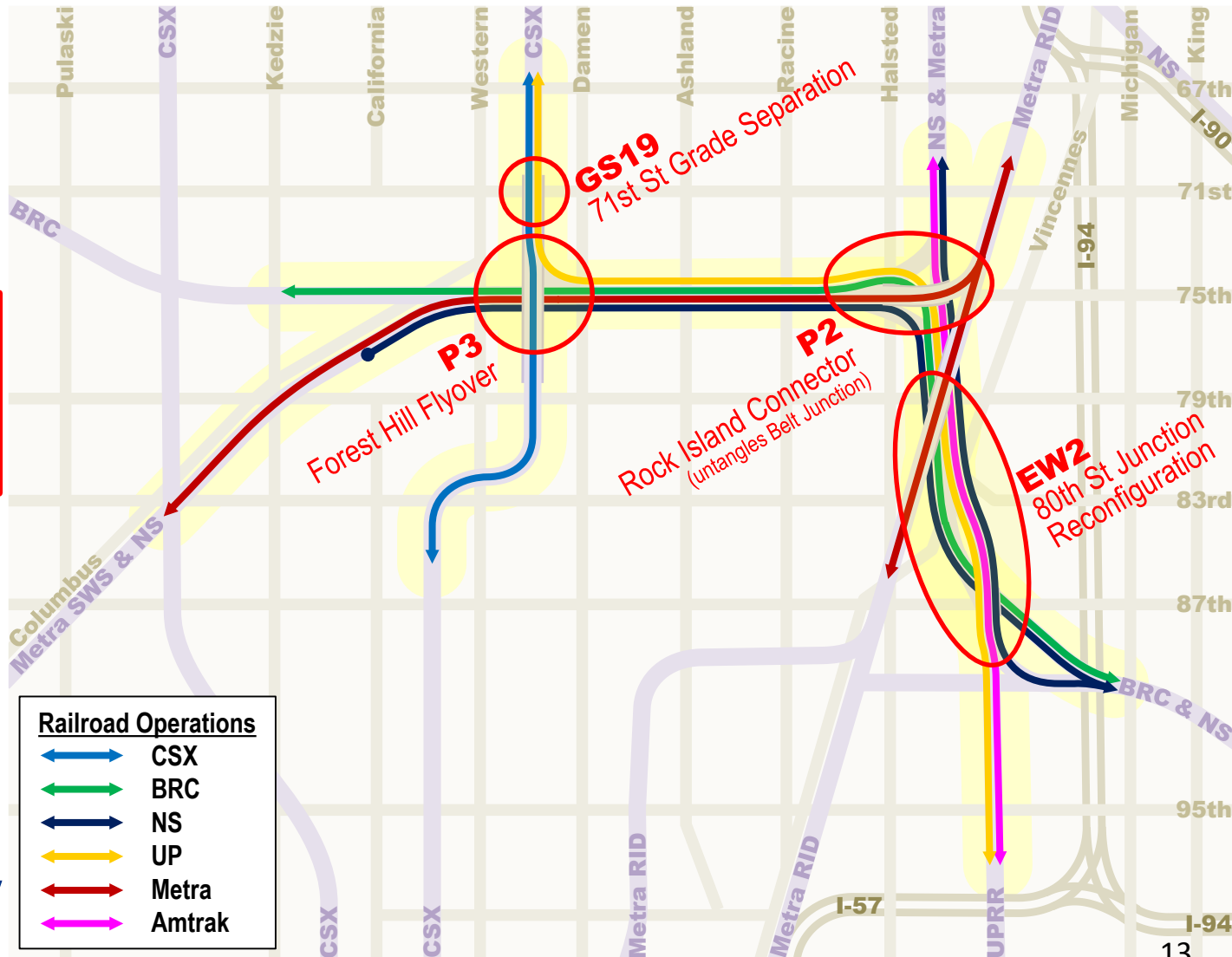
**P2**



**EW2**



*The CREATE partners  
will seek future  
funding to finish  
construction of P2 and  
EW2.*





# Transportation and Environmental Benefits

- Congestion reduction
- Air quality and energy improvements
- Viaduct improvement program
- Community mobility improvements
  - Street, sidewalk and bus improvements



# Community Benefits

- **Education**
  - Support STEM programs in local schools
- **Local Jobs**
  - Fund On-the-Job Training (\$15/hour) through Dawson Technical Institute and the IDOT Highway Construction Careers Training Program (HCCTP)
- **Contracting**
  - Promote Disadvantaged Business Enterprise (DBE) contracting opportunities through Get On Board



---

# CREATE Project Highlights



# Union Pacific Third Mainline (B2)

## Melrose Park

60 freight trains & 59 Union Pacific Metra trains affected

- Constructed 3.5-mile third main track on UP
- Constructed railroad bridge over Addison Creek
- Constructed flyover connection from the Indiana Harbor Belt to the UP
- Control points reconfigured
- Upgraded track between UP and IHB
- Metra's Berkeley and Bellwood passenger stations improved; pedestrian underpasses constructed
- Completed 2013



*Before*



*After*

# Englewood Flyover (P1) Chicago

## Improvements benefit Metra, NS and Amtrak

- Removed conflict point between commuter, passenger and freight trains
- Alleviated Amtrak's most severe delay point in the Midwest
- Completed 2014

## Reduced rail/rail conflicts





# Englewood Flyover (P1)

## *South looking North*

---

**Before 2011**



**After 2014**



# 71<sup>st</sup> Street Grade Separation (GS14) Bridgeview

- Grade separation of 71<sup>st</sup> Street and the IHB/CSX tracks just west of Harlem Avenue
- Road underpass
- Completed 2013

Eliminated road/rail conflict





# 71<sup>st</sup> Street Grade Separation (GS14) Bridgeview

---

**Before 2011**

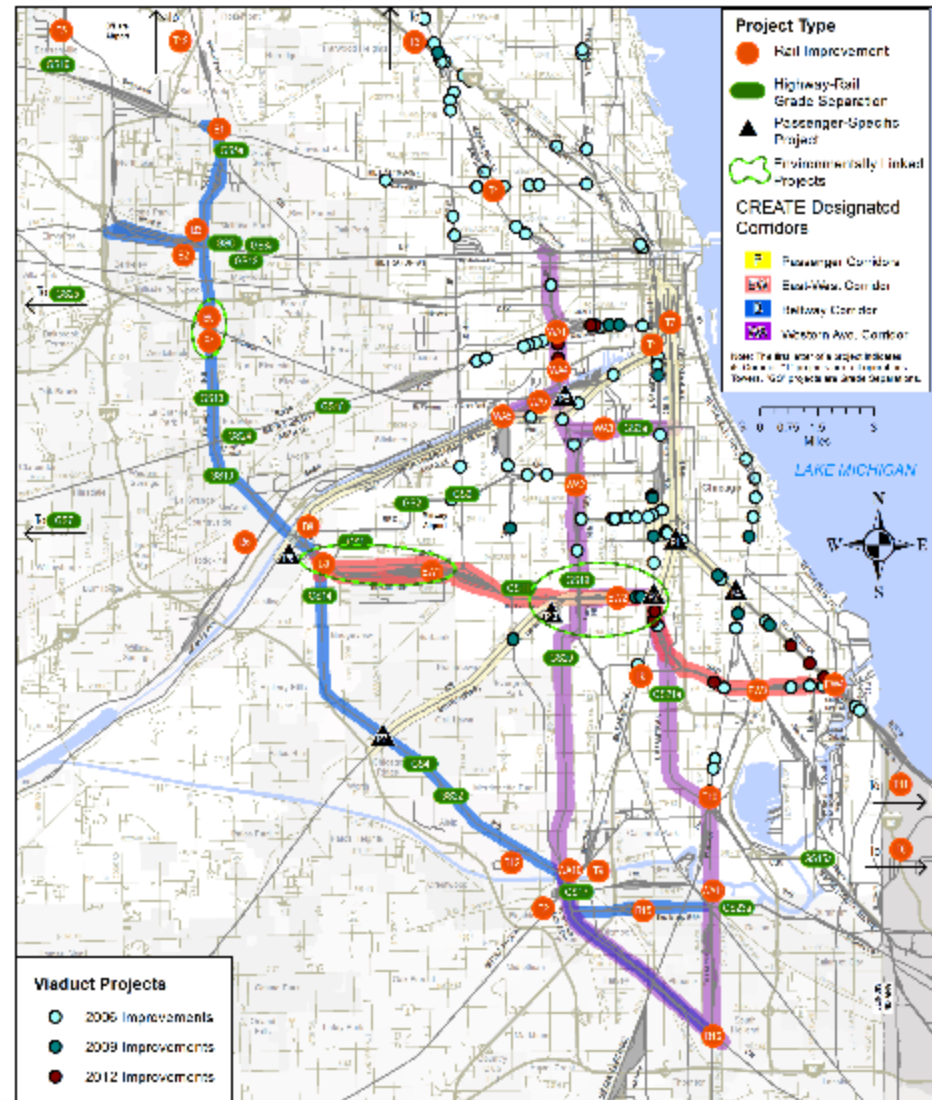


**After 2013**



# Viaduct Improvement Program Chicago

- Locations in the City of Chicago
- Improved roadways, sidewalks and drainage under railroad viaducts
- Enhanced safety and security for motorists, pedestrians and bicyclists
- 37 locations completed in 2006
- 14 locations completed in 2012 (USDOT TIGER funding, \$5 million)
- 11 completed between 2015 and 2016 (State of Illinois funding)



# Viaduct Improvement Program Chicago

*Example: 1530 S Racine Avenue*



*Example: 1530 S Loomis Street*





# CREATE Next Steps

---

- Continue to leverage all funding opportunities
- Execute 75<sup>th</sup> St. CIP grant and other grant funded projects



- Complete:
  - Remaining rail corridor projects
  - Remaining passenger-freight rail flyover projects
  - Remaining grade separation projects

# Stay in Touch!

---



**E-mail:** [info@createprogram.org](mailto:info@createprogram.org)

**Website:** [www.createprogram.org](http://www.createprogram.org)

**Like us on Facebook**

[www.facebook.com/CREATEProgramChicago](http://www.facebook.com/CREATEProgramChicago)



**Find us on YouTube**  
[CREATEProgramChicago](http://CREATEProgramChicago)

