



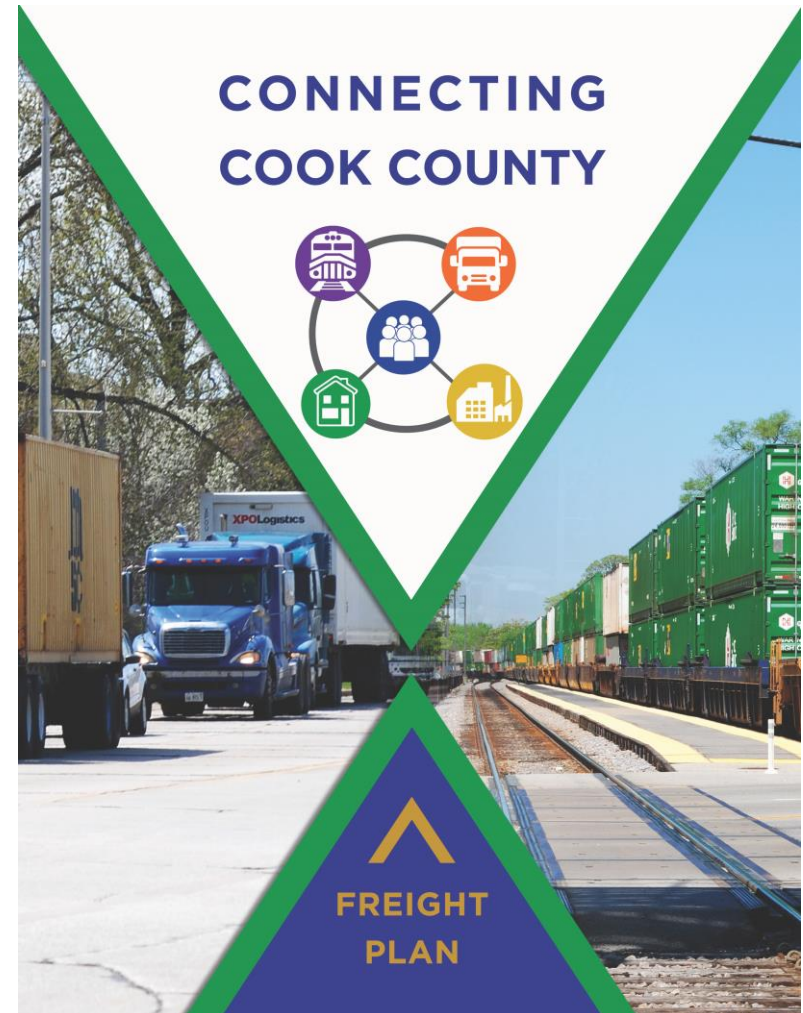
# Cook County Freight Plan

Illinois State Freight Advisory Council

October 29, 2018

# FREIGHT PLAN OVERVIEW

- Key recommendation from *Connecting Cook County*
- Two-year planning process; Cook County Board approval anticipated Fall 2018
- Quantitative and qualitative analysis
- Industry, public sector, and civic outreach



# FREIGHT AND THE ECONOMY



**27%** of jobs in Cook County are in freight-dependent industries producing **56%** of the County's economic output

Transportation and materials-moving occupations are anticipated to grow an estimated **8.5%** between **2012** and **2022**, adding nearly **17,000 jobs**





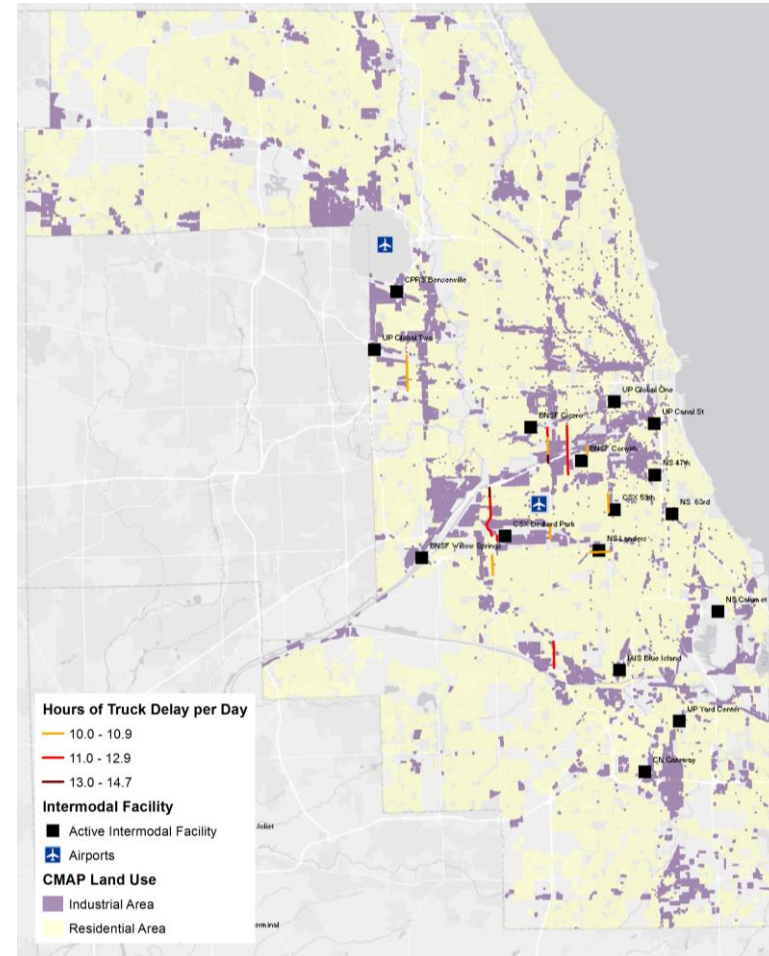
# Cook County's Freight System at Work



# TRUCK CONGESTION

Route	From	To	Hours of Delay (max)
Harlem Ave.	I-55	95 <sup>th</sup> St.	14.7
Cicero Ave.	Ogden Ave.	I-55	13.4
Pulaski Rd.	26 <sup>th</sup> St.	47 <sup>th</sup> St.	12.0
Cicero Ave.	115 <sup>th</sup> St.	I-294	11.6
Sayre Ave.	71 <sup>st</sup>	73 <sup>rd</sup> St.	11.4
Cicero Ave.	67 <sup>th</sup> St.	73 <sup>rd</sup> St.	11.4
Kedzie Ave.	I-55	Pershing Rd.	10.7
Western Ave.	55 <sup>th</sup> St.	63 <sup>rd</sup> St.	10.6
Mannheim Rd.	Lake St.	I-290	10.3
79 <sup>th</sup> St.	Kedzie Ave.	Western Ave.	10.2

Freight routes with more than 10 hours of truck delay

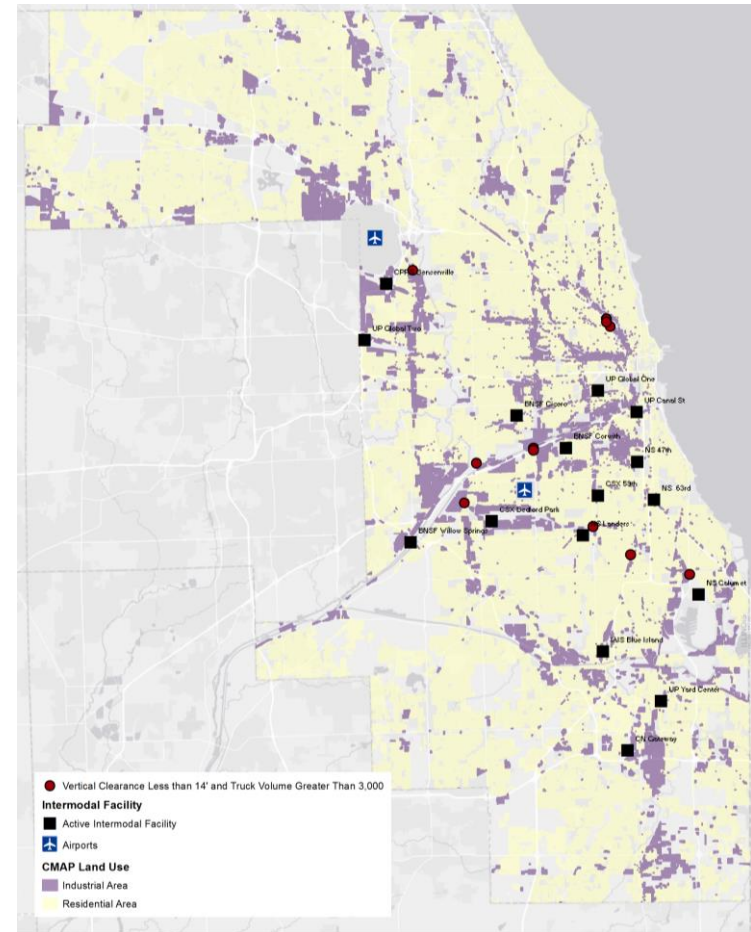


Source: IDOT, CMAP, Analysis by AECOM, Cambridge Systematics, 2017

# VERTICAL CLEARANCES

Street Crossing	Railroad	Minimum Vertical Clearance	AADT	Truck Volume
IL 50 (CICERO AVE.)	BNSF	13'-11"	44,300	6,202
IL 43 (HARLEM AVE.)	CN	13'-09"	37,800	4,914
IL 43 (HARLEM AVE.)	BNSF	13'-09"	37,800	4,914
IL 50 (CICERO AVE.)	CN	13'-10"	59,500	4,760
STONY ISLAND AVE.	NS	13'-04"	56,100	4,488
STONY ISLAND AVE.	CN	13'-04"	56,100	4,488
IL 19 (IRVING PARK RD.)	CN	13'-11"	35,100	3,510
IL 171 (ARCHER AVE.)	CSX	13'-11"	26,300	3,419
87TH ST.	UP	13'-00"	33,400	3,340
IL 64 (NORTH AVE.)	UP	12'-10"	37,000	3,330
WESTERN AVE.	IHB	13'-06"	29,300	3,223
ASHLAND AVE.	UP (SOUTH)	12'-06"	30,100	3,010
ASHLAND AVE.	UP (NORTH)	12'-08"	30,100	3,010
ASHLAND AVE.	CP	13'-00"	30,100	3,010

## Vertical clearances less than 14' on high-volume truck corridors



Source: IDOT, CMAP, Analysis by AECOM, Cambridge Systematics, 2017

# PAVEMENT CONDITIONS



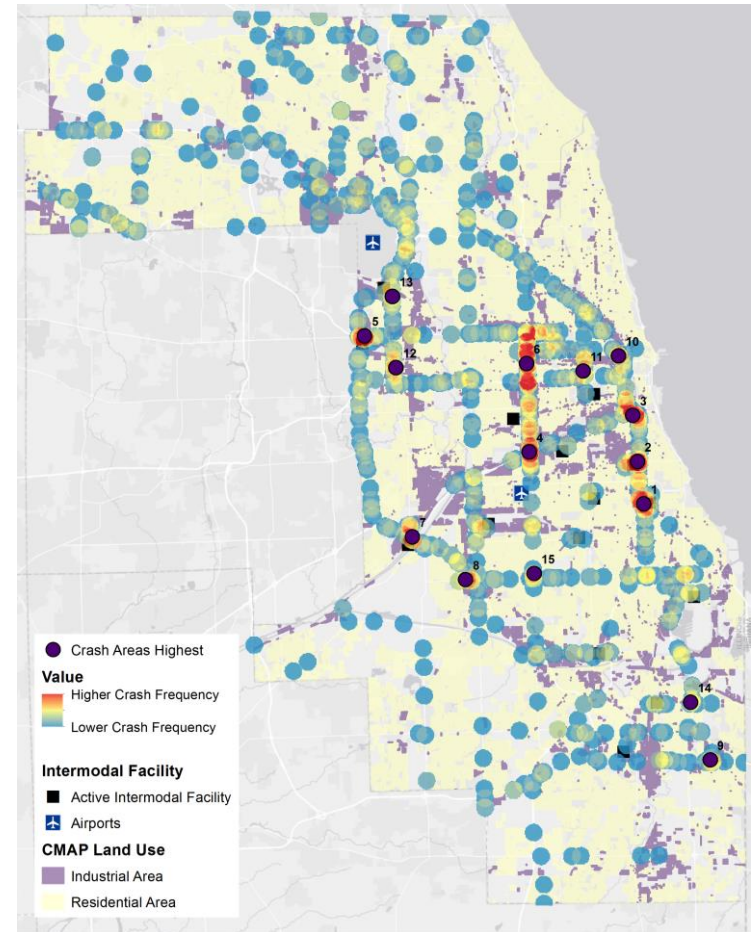
- Currently, 28.7 percent of truck routes, 35.6 percent of state non-truck routes, and 37.7 percent of all roads rated as “Poor” or “Fair”
- In addition, completed extensive pavement condition field survey
  - 50 miles of roadway
  - 21 municipalities
  - 9 videos
  - 1,537 photos



# SAFETY

Rank	Route	Location (To/From or Intersection)
1	I-94	63rd St. to Marquette Rd.
2	I-90/94	43rd Street to 47th St.
3	I-90/94	Cermak Road to 31st Street
4	Cicero Ave.	31st St. to 47th Street
5	North Ave.	I-294 to Wolf Rd.
6	Cicero Ave.	North Ave. to Fifth Ave.
7	I-294	I-55 to U.S. 45 (La Grange Rd.)
8	95th St.	Roberts Rd. to Harlem Ave.
9	I-80	At Torrence Ave.
10	I-90/94	Chicago Ave. to Grand Ave.
11	Western Ave.	Grand Ave. to I-290
12	U.S. 45 (Mannheim Rd.)	Lake St. to I-290
13	U.S. 45 (Mannheim Rd.)	Irving Park Rd. to Belmont Ave.
14	I-94	At Sibley Blvd.
15	Cicero Ave.	At 99th St.

## Truck crash hotspots

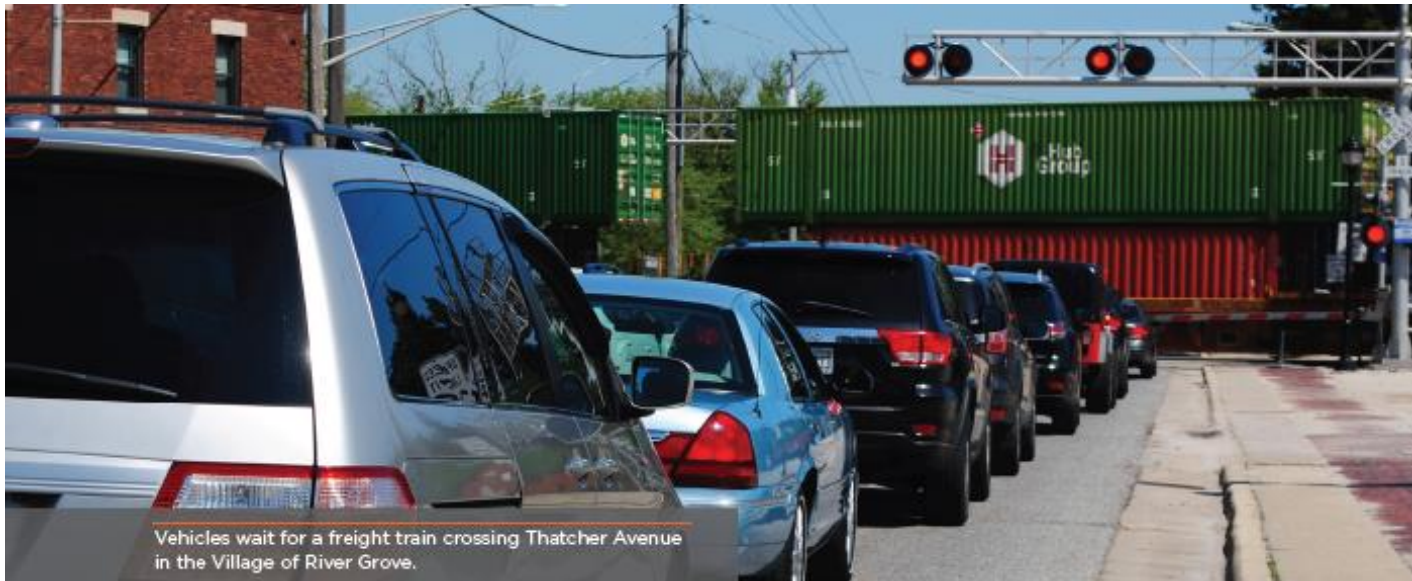


Source: IDOT, CMAP, Analysis by AECOM, 2017



# AT-GRADE RAIL CROSSINGS

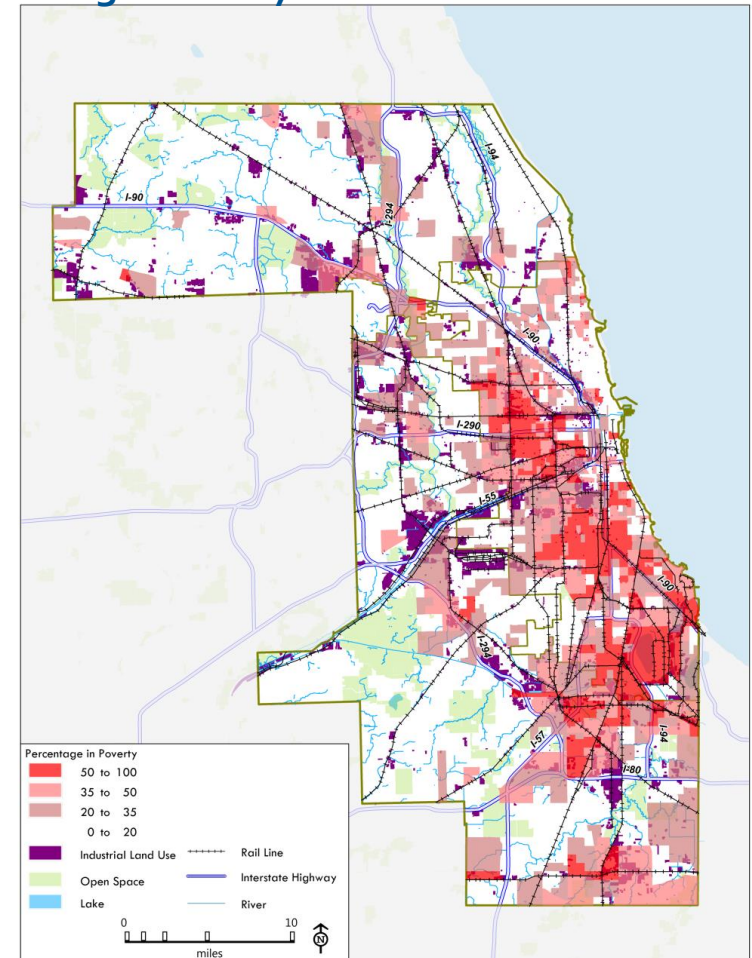
- High volume of freight rail activity imposes significant delays at grade crossings
- Delays are disproportionately concentrated in south and west Cook County, near major railyards and the intersection of busy freight and passenger lines



# LAND USE CHALLENGES

- Misalignment between job locations and available workers
- High rates of vacant or underutilized industrial property
  - 40 percent in Chicago
  - 41 percent in south Cook
- Challenges to reuse of land
  - Site consolidation
  - Brownfield status / environmental contamination
  - High tax rates, back taxes, cloudy titles

High Poverty vs. Industrial Land Use







# Investing for Success: Cook County's Freight Action Plan

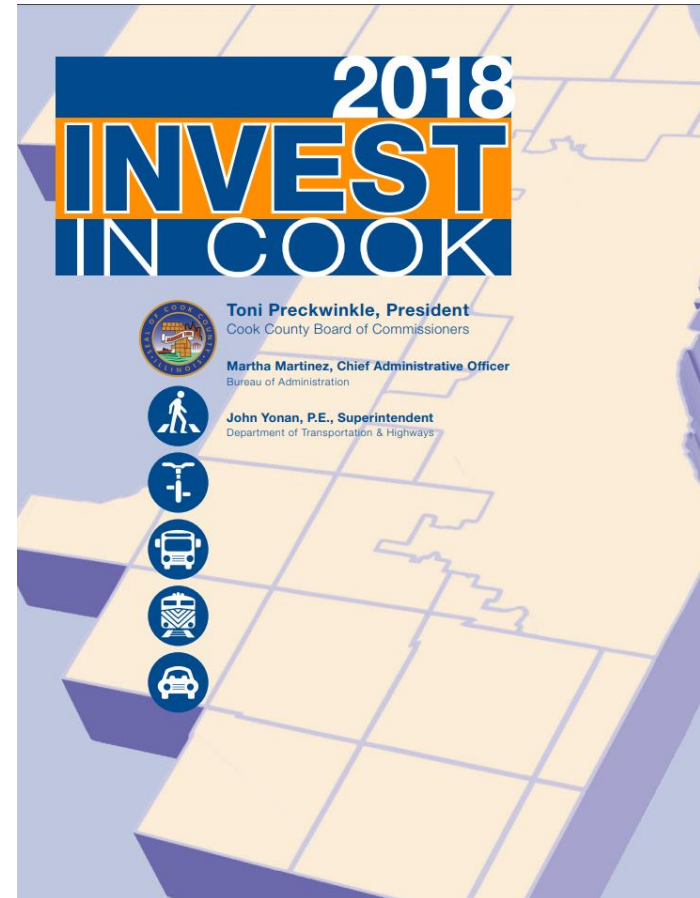


# EXERCISE LEADERSHIP



# INVEST IN COOK

- Improvements consistent with the five priorities of *Connecting Cook County*
- Over 10 freight projects awarded funding in 2017/18
- Seed investment on three freight projects in 2017 yielded federal, state, and local commitments of \$40 million



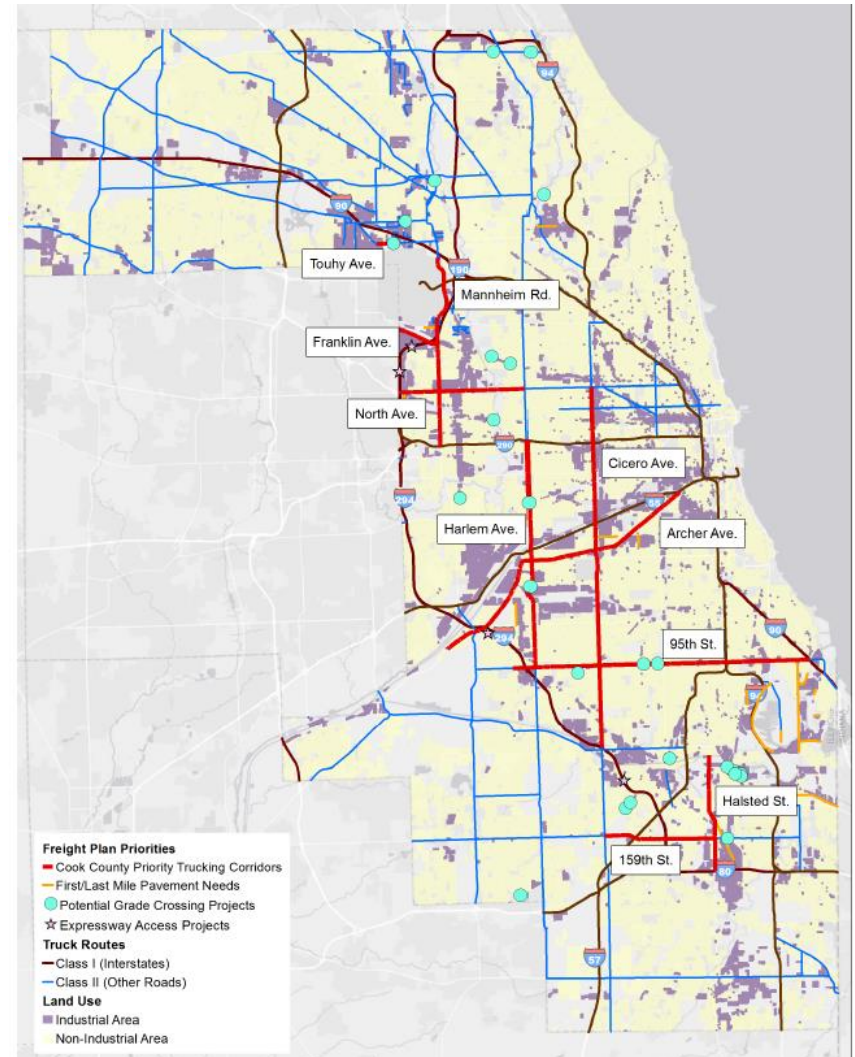
# IMPLEMENT ROADWAY IMPROVEMENTS





# PRIORITY TRUCKING CORRIDORS

Corridor	Limits
95th Street	I-294 to Chicago Skyway
159th Street	Cicero Avenue to Halsted Street
Archer Avenue	Willow Springs Road to Ashland Avenue
Cicero Avenue	North Avenue to Bedford Park
Franklin Avenue	County Line Road to Mannheim Road
Halsted Street	Cal Sag Channel to I-80
Harlem Avenue	I-290 to 95th Street
Mannheim Road	O'Hare to I-290
North Avenue	I-290/294 to Harlem Avenue
Touhy Avenue	Elmhurst Road to Mt. Prospect Road



# TOP TRUCKING CORRIDORS

**CICERO AVENUE**  
4-6 LANES  
17.0 MILES



**HARLEM AVENUE**  
4-6 LANES  
13.3 MILES



**MANNHEIM ROAD**  
4-6 LANES  
10.0 MILES



**95TH STREET**  
4-6 LANES  
13.9 MILES



Low Vertical Clearance



At-Grade Crossing



Other Project

Freight Congestion

Safety Hotspot

# POOR PAVEMENT CONDITIONS

Route	Limits	Length	Municipality
16th St.	Avenue O to Burley Ave.	0.24	Chicago
47th Ave.	Lake St. to UP Global II	0.29	Northlake
78th Ave.	79th St. to W 71st St.	1.0	Bridgeview
Buffalo Ave./Burley Ave.	E 106th St. to E 108th St.	0.31	Chicago
Commercial Ave./104th St.	100th St. to Torrence Ave.	0.78	Chicago
Howard St.	Oak Park Ave. to Lehigh Ave.	0.86	Skokie
Kedzie Ave.	47th St. to 51st St.	0.5	Chicago
Langley Ave.	E 106th St. to E 111th St.	0.64	Chicago
Seymour Ave.	Irving Park Rd. to Mannheim Rd.	0.61	Franklin Park
Stony Island Ave.	E 122nd St. to Calumet River	0.52	Chicago
Doty Ave.	S Stony Island Ave. to E 130th St.	3.95	Chicago
Dolton Rd/State St.	I-94 to State Line Ave.	2.97	Burnham/Calumet City
Torrence Ave.	E 95th St. to E 130th St.	4.50	Calumet City
126th Pl.	Torrence Ave. to Avenue O	1.0	Chicago
47th St.*	Cicero Ave. to Pulaski Rd.	1.0	Chicago
Vincennes Rd.	Halsted St. to Armory Dr.	2.0	Phoenix/South Holland

\*47th Avenue is privately owned by the UP railroad but public access is allowed through an easement. The maintenance needs for this road need to be addressed, as Cook County cannot invest in privately owned roads.



# EXPRESSWAY ACCESS

- Need for new or improved expressway access in high freight volume locations
- Coordinate with IDOT, Tollway, and municipalities to improve access
- Current examples:
  - I-90 at Central Road
  - I-294 at County Line Road
  - I-294 at Lake Street/North Avenue
  - I-294 at Franklin Avenue/Green Street



# FOCUS ON RAIL IMPROVEMENTS



# CREATE PROGRAM

- Support the completion of 75th Street Corridor Improvement Project (CIP)
- Continue to be an active CREATE Program partner and support activities that lead to completion of the full CREATE Program



# AT-GRADE CROSSINGS

Roadway Crossing	At-Grade Railroad Crossing	Municipality	Priority Trucking Corridor	CREATE Projects
115th St.	IHB (CSX)	Alsip		GS22
31st St.	IHB	La Grange Park		GS13
63rd/65th St.*	BELT/IHB	Bedford Park		GS1
95th St. (US 12-20)	IHB (CSX)	Evergreen Park	X	
95th St. (US 12-20)	GTW (CSX)	Evergreen Park	X	
First Ave. (IL 171)	CNW (UP)	Maywood		GS12
Grand Ave.*	Metra	Elmwood Park		
Harlem Ave. (IL 43)	BNSF	Riverside/Berwyn	X	GS18
Touhy Ave. (IL 72)*	CNW (UP)	Des Plaines	X	
Multiple	Multiple	Dolton/Riverdale	N/A	WA11 GS23a

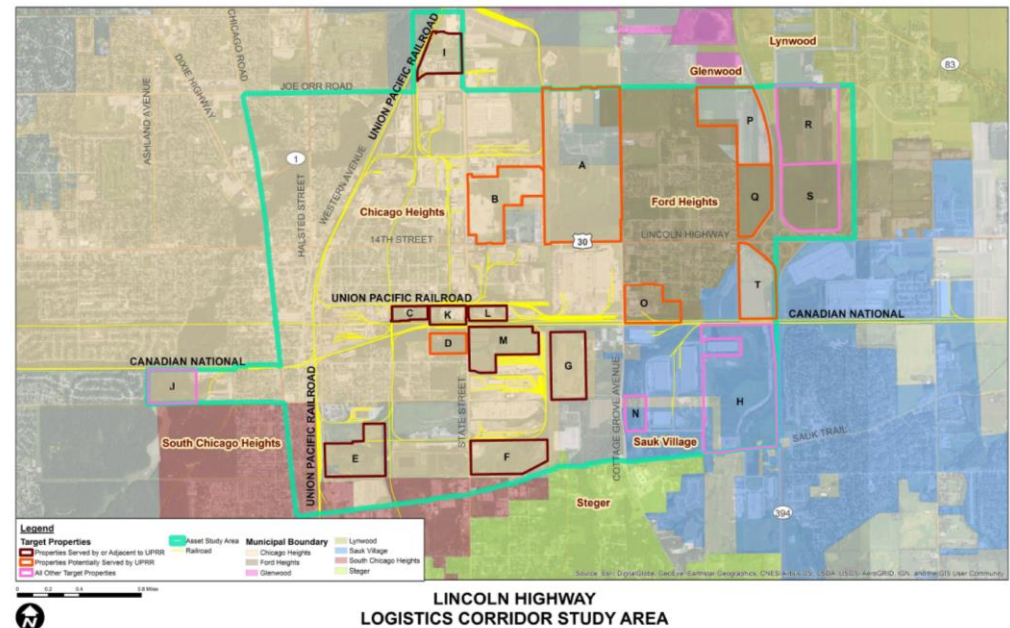


# COORDINATE COMMUNITY AND ECONOMIC DEVELOPMENT



# PRE-DEVELOPMENT ACTIVITIES

- Coordinate environmental clearance, permits, and remediation
- Develop funding, financing, and tax incentive packages to support redevelopment efforts
- Invest in transportation, utility, and stormwater infrastructure
- Provide workforce connections





# Conclusion





# Questions?

[WWW.CONNECTINGCOOKCOUNTY.ORG](http://WWW.CONNECTINGCOOKCOUNTY.ORG)





John Yonan  
Superintendent  
Cook County Department of Transportation and Highways  
[john.yonan@cookcountyil.gov](mailto:john.yonan@cookcountyil.gov)

[WWW.CONNECTINGCOOKCOUNTY.ORG](http://WWW.CONNECTINGCOOKCOUNTY.ORG)



Alex Beata  
Freight Transportation Manager  
Cook County Department of Transportation and Highways  
[alexander.beata@cookcountyil.gov](mailto:alexander.beata@cookcountyil.gov)

[WWW.CONNECTINGCOOKCOUNTY.ORG](http://WWW.CONNECTINGCOOKCOUNTY.ORG)