



Illinois Department
of Transportation

IDOT Statewide Truck Parking Study

ISFAC Meeting
July 30, 2020

Agenda



Study Purpose



Outreach Efforts



IDOT Parcel ROW Analysis – Preliminary Results



Questions



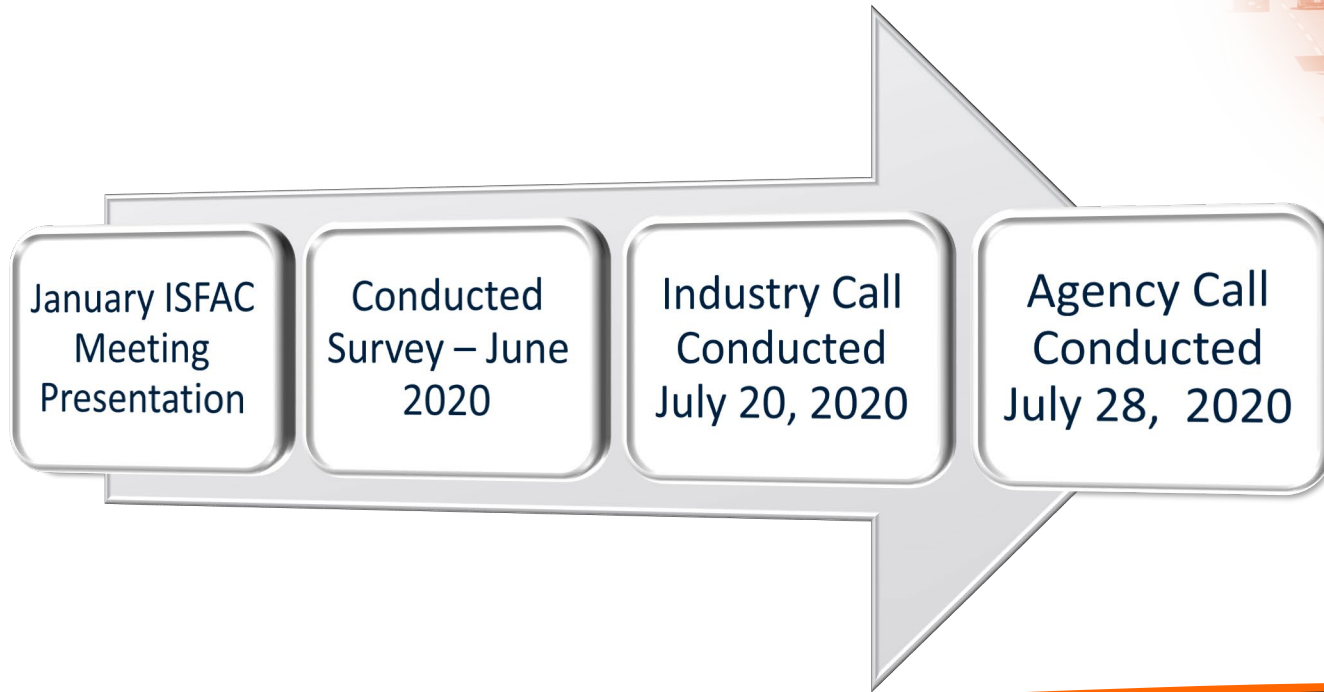
Study Purpose

- ❑ Development a vision of IDOT's role on truck parking
- ❑ Identify options to increase supply of truck parking
- ❑ Explore options for private sector engagement
- ❑ Identify Best Practices



Outreach Efforts to Date

Outreach Efforts To Date



Survey Results

Non-COVID 19 Key Takeaways

Parking is not often available at most Illinois truck stop

Difficulty locating parking in the Chicago Region

More need for short term parking solutions

Safety and/or Security at the Facility as most important factor

COVID 19 Key Takeaways

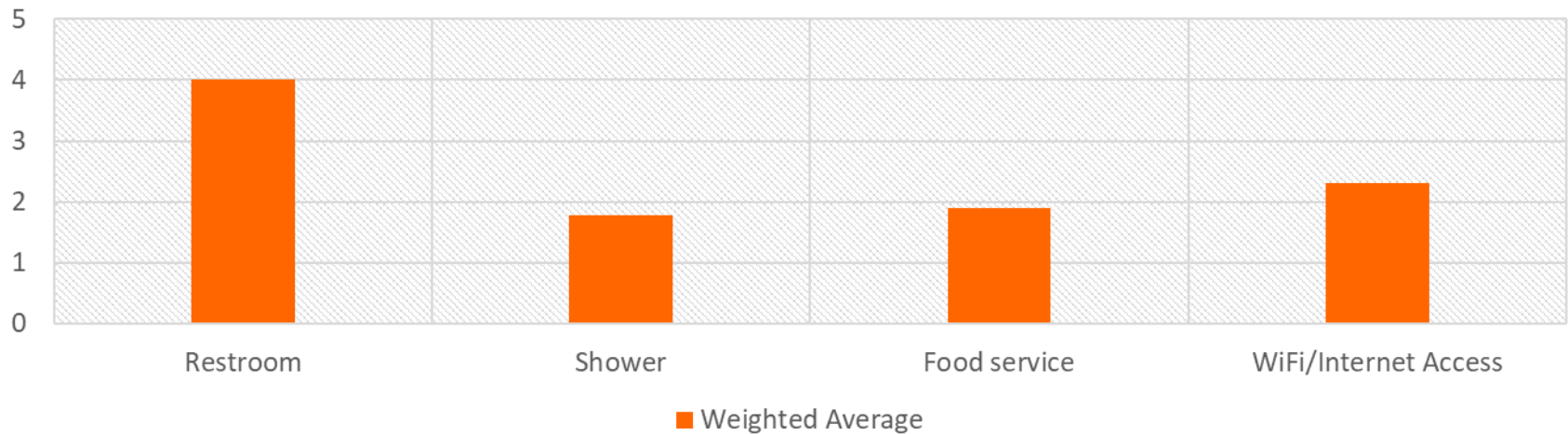
Has impacted ability to deliver cargo

No change in truck parking space availability



ISFAC Survey-Amenity Question Results

If amenities are provided at a truck parking facility, how would you rank the importance of the following on a scale of 1 to 4, with 1 as the Least Important and 4 as the Most Important?



IDOT Parcel ROW Analysis – Preliminary Results

Overview of IDOT Parcel ROW Analysis

- Data driven methodology to screen IDOT owned parcels for suitability for:
 - 1) Expansion of Current Facilities
 - 2) New Facility Location



Proposed Scoring Rubric – June 16, 2020

Criteria

Is the parcel greater than 2 acres in area?

Is the parcel less than 0.25 miles from an Interstate exist?

Is the parcel adjacent to an existing rest area?

Is the parcel adjacent to a weigh station?

Is the parcel adjacent to a private truck parking facility?

Is the parcel located along an Interstate segment that has a private truck parking facility that is consistently full?

Is the parcel located along an Interstate segment that has a rest area that is utilized over capacity?

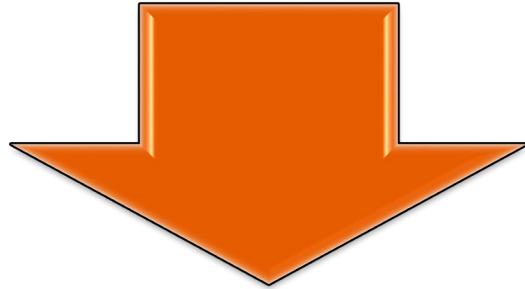
Is the parcel located along a segment with the number of fatigue related crashes involving an HCV in the top quintile of the IDOT District

Is the parcel located along a segment with fatigue related crashes involving an HCV?

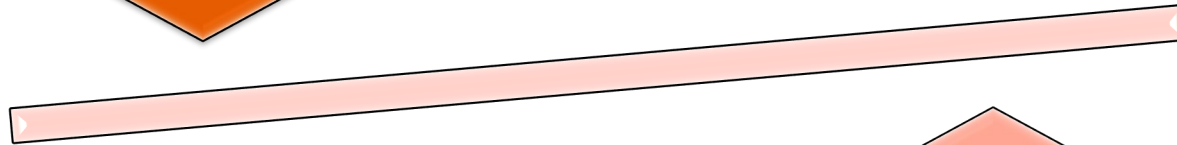
Is the parcel located along a segment with excessive rest area spacing?



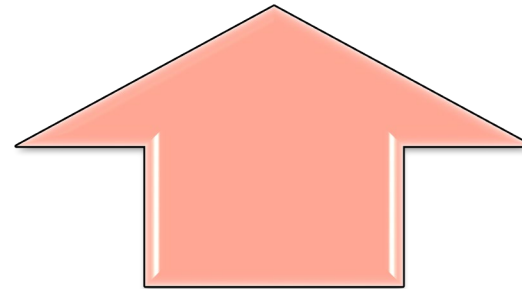
Category 1: Potential Expanded Facilities



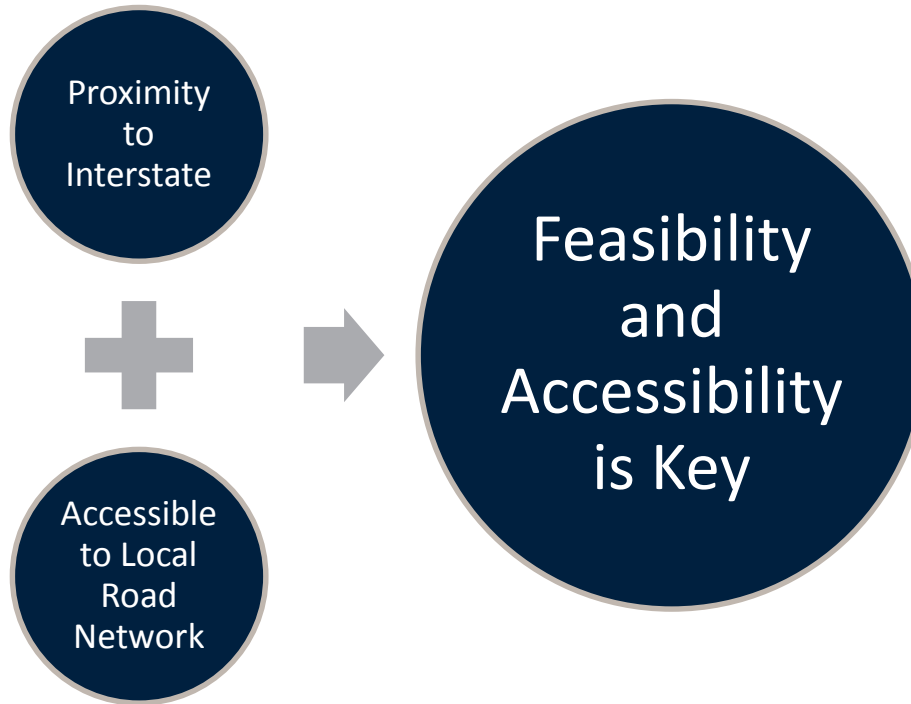
Parcel includes
existing safety
rest areas

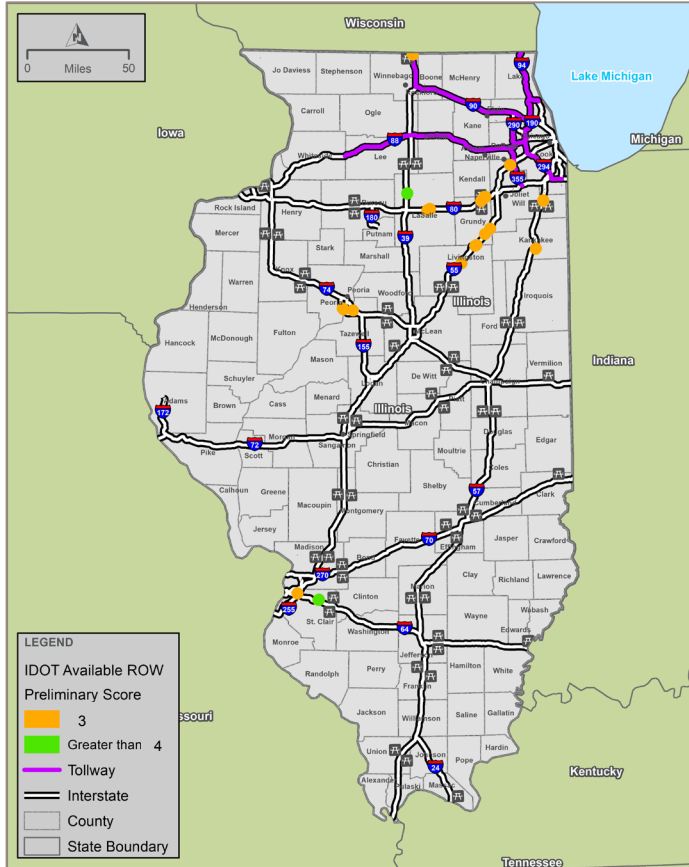


Parcel is adjacent
to existing safety
rest areas

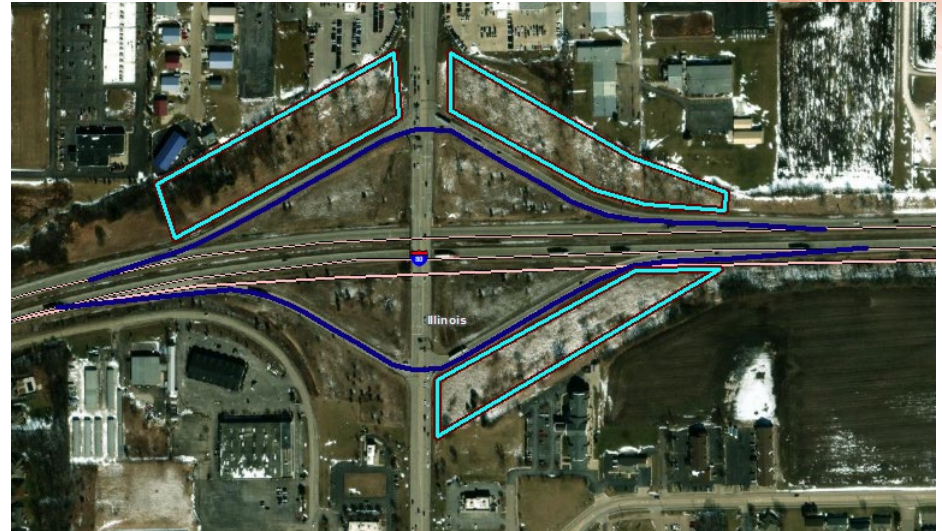


Category 2: Potential New Facilities

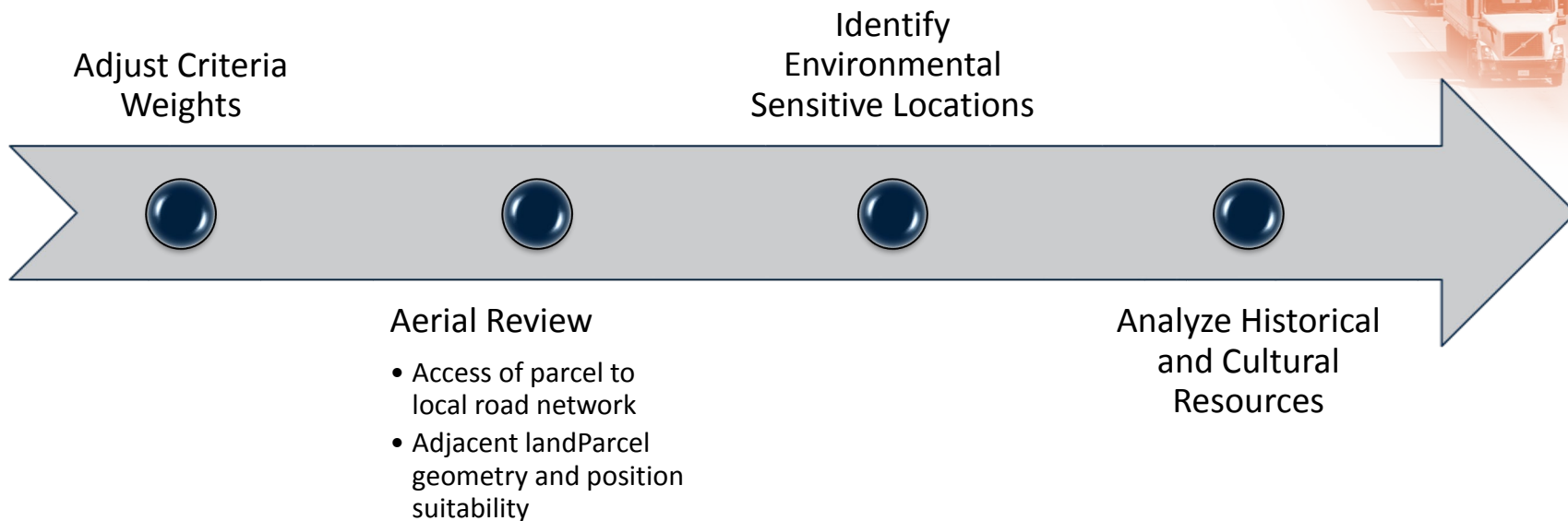




Example-Potential New Location Facilities :
Parcel is accessible to Interstate and local road network.



Secondary Evaluation Next Steps

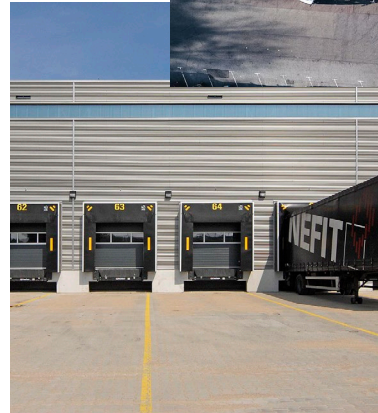


Additional Questions



Connecting Truck Parking to Planning

- MPOs Freight Plans: To what extent is truck parking discussed?
- Local Gov't Comp Plans: Is there a freight plan/component and to what extent does it address truck parking?



Thank You!

- Contact Info:

Mike Vanderhoof

Project Manager –IDOT

Michael.Vanderhoof@Illinois.gov

217-720-6527

Davonna Moore

Project Manager

mooredc@cdmsmith.com

816-412-3131

Jacki Murdock

Deputy Project Manager

murdockj@cdmsmith.com

312-780-7715