

# Illinois Freight Advisory Committee

## September 18, 2017

**Prioritization of Critical  
Rural Freight Corridors:  
Bottom Up Outreach Approach**



**MOVING  
ILLINOIS  
AHEAD.**

# Identification of 337 Miles of Critical Rural Freight Corridors

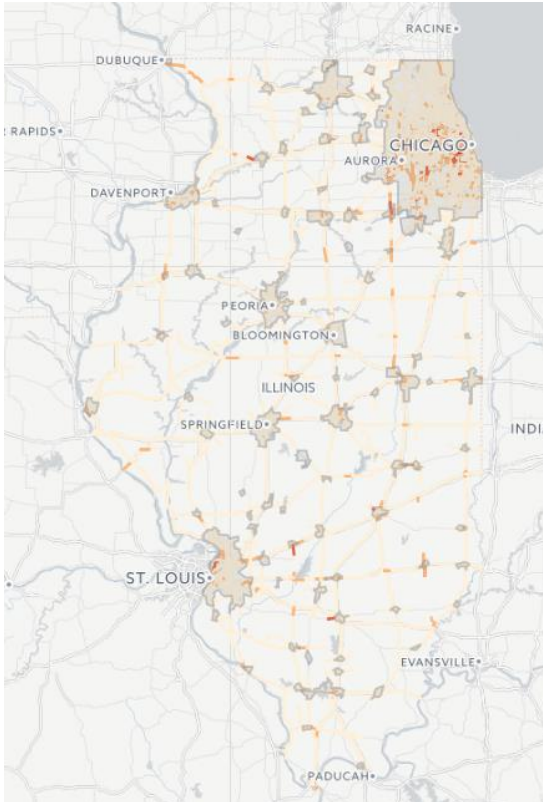


**MOVING  
ILLINOIS  
AHEAD.**



# Identification of Critical Rural Freight Corridors in Illinois

## Urban Areas & Congestion



## Primary Freight Network



**MOVING  
ILLINOIS  
AHEAD.**



# Requirements for CRFC Designation

- (A) A rural principal arterial roadway and has a minimum of **25 percent** of the annual average daily traffic is Class Trucks
- (B) Provides access to energy exploration, development, installation, or production areas;
- (C) Connects the PHFS/Interstate System to facilities that handle more than:
  - 1. 50,000 20-foot equivalent units per year; or
  - 2. 500,000 tons per year of bulk commodities;
- (D) Provides access to:
  - 1. a grain elevator;
  - 2. an agricultural facility;
  - 3. a mining facility;
  - 4. a forestry facility; or
  - 5. an intermodal facility;
- (E) Port of Entry Access.;
- (F) Provides access to significant air, rail, water or other freight nodes.
- (G) Determined by the State to be vital to improving the efficient movement of freight or of importance to the State economy.

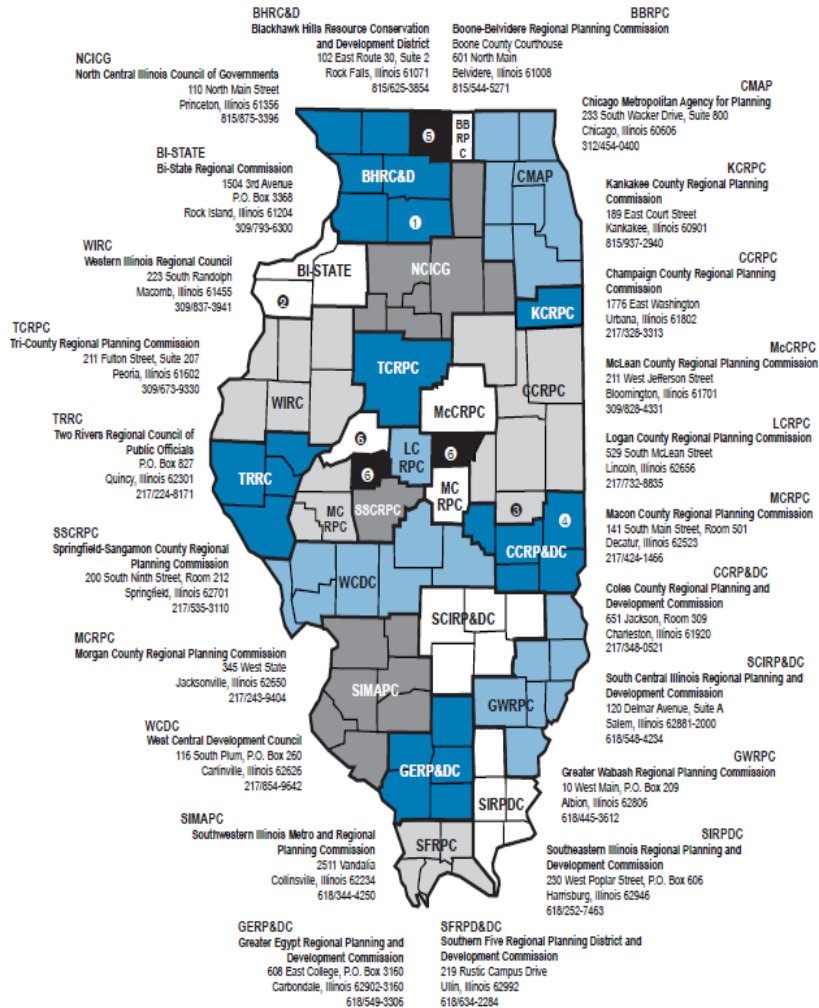


**MOVING  
ILLINOIS  
AHEAD.**

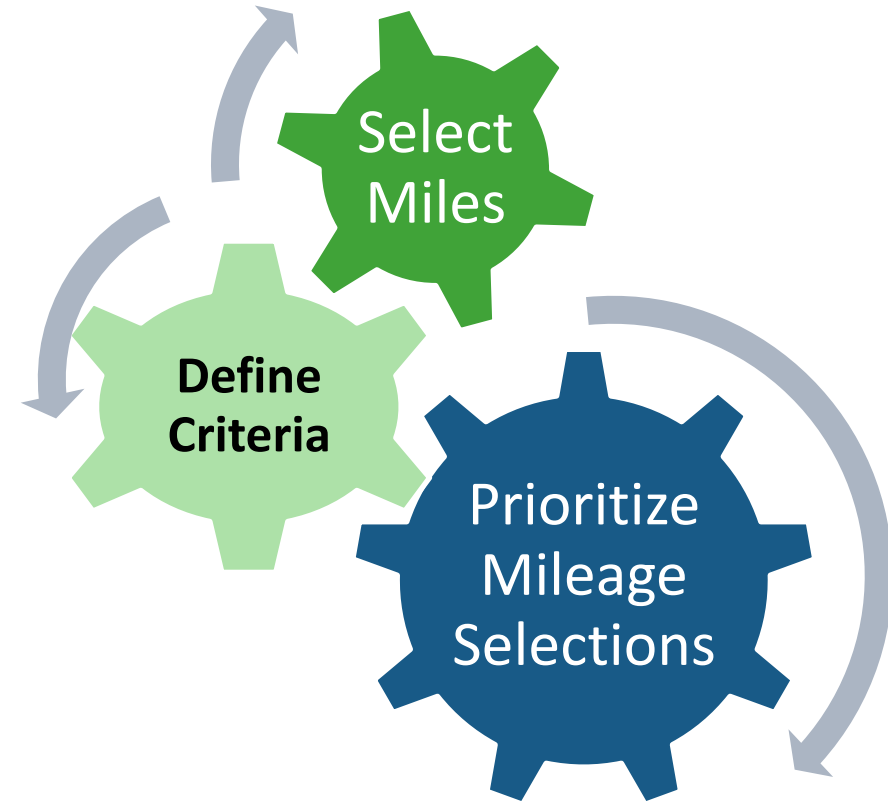




## Illinois Regional Planning Agencies



# The Process



**MOVING  
ILLINOIS  
AHEAD.**

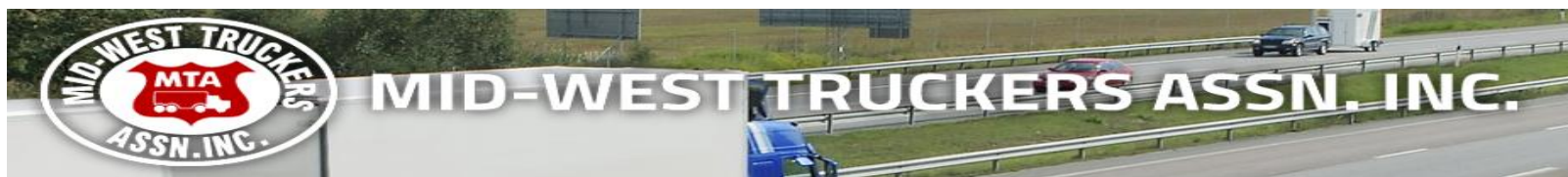
# Weighted FREIGHT Criteria Recommendations

Criteria	Weight	Measure
Connectivity	21.68%	Adjacent to PFN
Economic Impact *	20.07%	Population growth
Safety*	17.50%	Truck Incidents
Congestion	14.45%	CMAP Calculation
Condition	11.64%	National Bridge Inventory
Freight Density	11.16%	Industry Activities
Environmental	3.50%	CO2 measurement
* MWT Priorities		



**MOVING  
ILLINOIS  
AHEAD.**



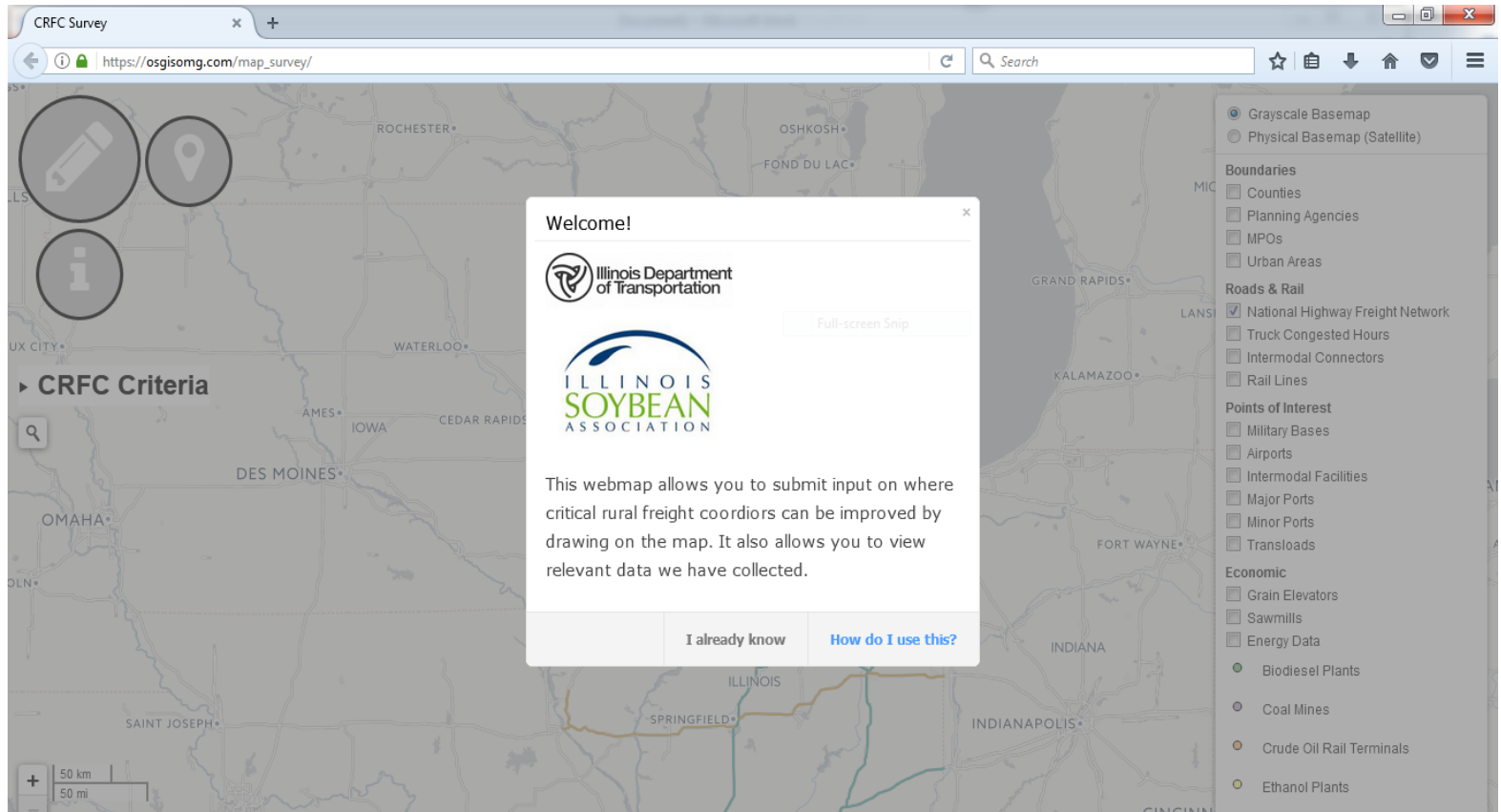


Outreach Summary			
Date	Organization	Est. Attendees	Location
May 5, 2017	Mid-West Trucking	30-35	Trenton, IL
May 15, 2017	Mid-West Trucking	20-25	Lincoln, IL
May 15, 2017	Mid-West Trucking	Newsletter with Link to map	
June 8, 2017	Mid-West Trucking	12-15	Elk Grove Village, IL
June 15, 2017	Mid-West Trucking	Newsletter with Link to map	
June 15, 2017	Mid-West Trucking	20-25	Rochelle, IL
June 18, 2017	Freight Advisory Committee	25-35	Springfield, IL
June 29, 2017	Illinois Association of Regional Councils	18-22	Springfield, IL
May - July	various outreach and webinars scheduled for training		
August 21, 2017	Illinois Ports Association	10	Chicago, IL
September 18, 2017	Freight Advisory Committee	25-35	Chicago, IL



**MOVING  
ILLINOIS  
AHEAD.**

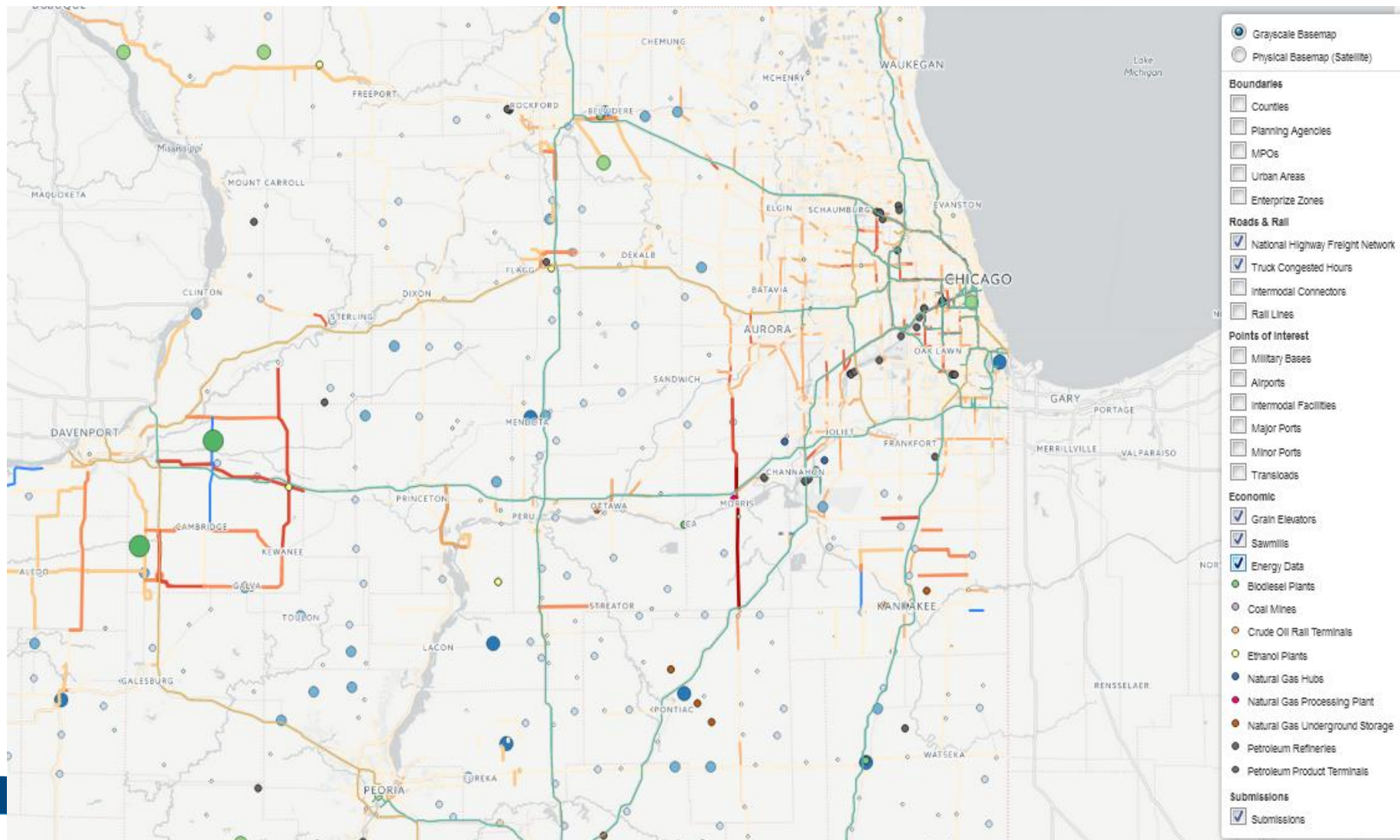
# [https://osgisomg.com/map\\_survey\\_results/](https://osgisomg.com/map_survey_results/)



**MOVING  
ILLINOIS  
AHEAD.**



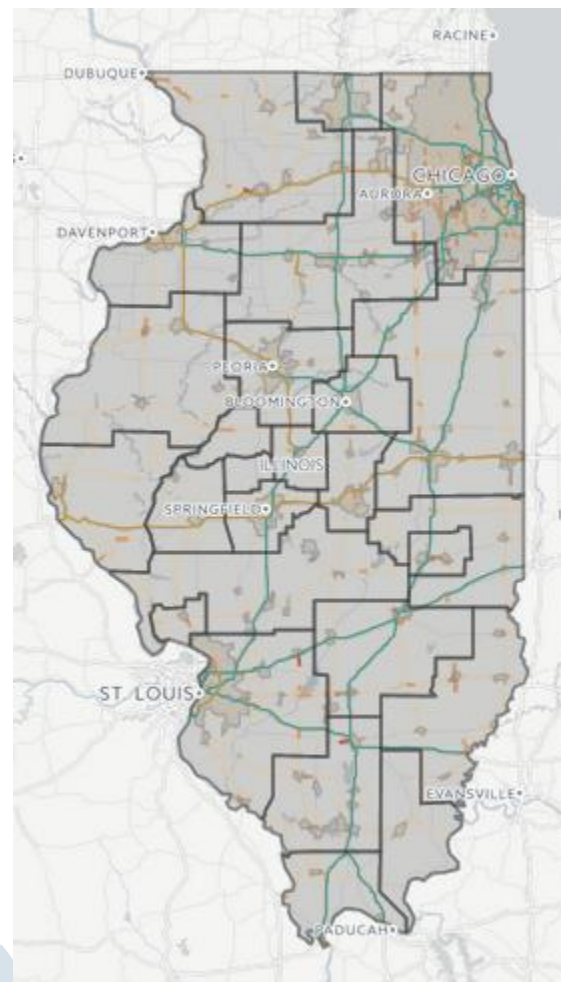
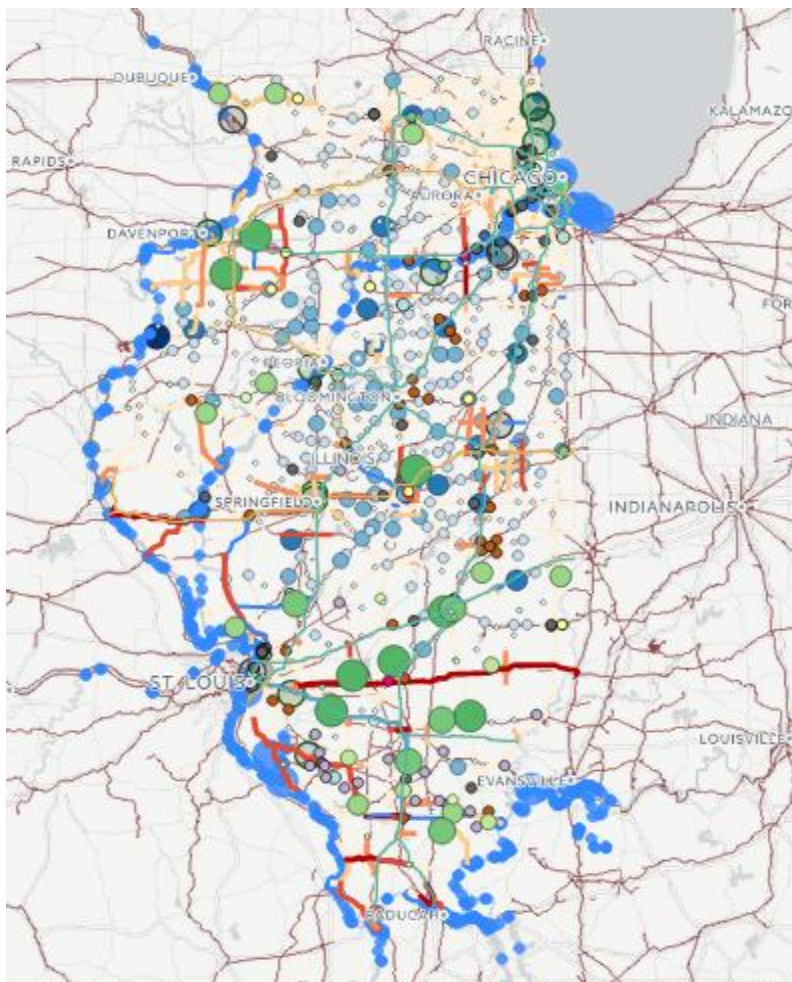




**MOVING  
ILLINOIS  
AHEAD.**



# Available Data Layers



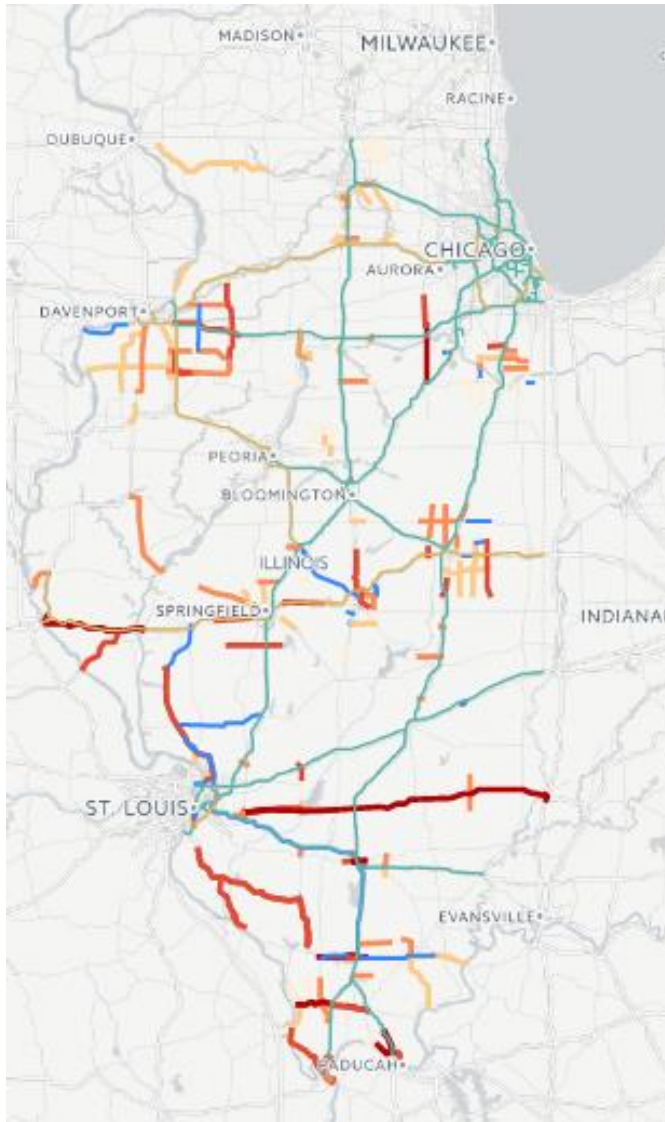
**MOVING  
ILLINOIS  
AHEAD.**



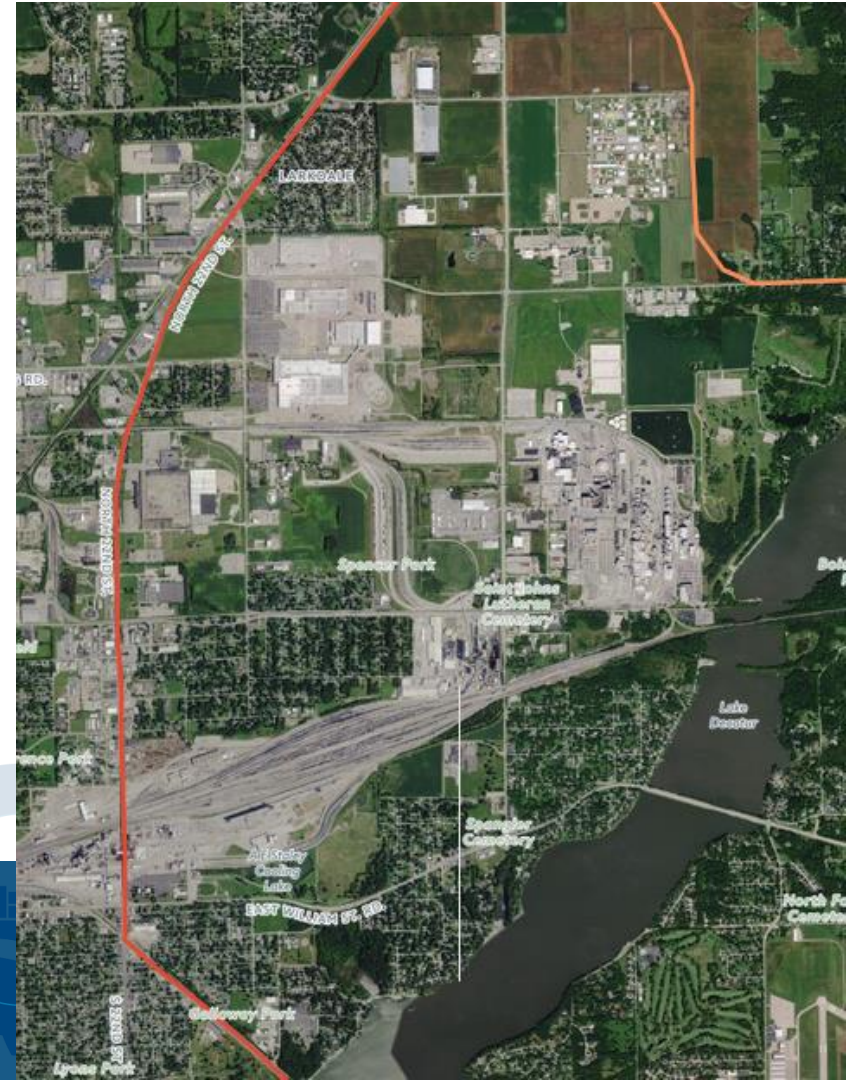


# Selected Segments

Red is highest ranking



## Ability to Visualize Freight Assets



# Ability to Capture Subjective Comments

Organization	Description (wrapped Text)	Selected Miles
Midwest Trucking Association	Coal Route Route 3	185.99
Midwest Trucking Association	MW Truckers Freight Bottleneck heavy haul OSOW Corridor1	144.97
IDOT	IL 15 in Mt Vernon from Shiloh Drive to east city limits provides multi-modal connectivity to In	4.54
Southern Five RPC	IL Hwy 146 - major connectivity route from I-24 to Cape Girardeau, MO	31.19
IDOT	IL 13 from Carbondale to east city of limits of Marion: IL 13 is the main east-west 4 lane expres	23.26
Jefferson County Development Corporatio	Highly congested rural road in a rural community. The 5000 population designation of urban fo	1.46
Greater Egypt Regional Planning Commissi	IL 13 serves industrial parks in Marion and Carbondale as well as the Aisin automotive manufac	3.58
Southern Five RPC	Major connectivity route between Metropolis, IL at I-24 and Joppa, IL	29.97
Midwest Trucking Association	MW Truckers Freight Bottleneck heavy haul OSOW Corridor2	48.90
NCICG	Route 47 connects interstates 80 and 55. additional road capacity( 4 lanes) is needed on this hig	17.17
Chicago Metropolitan Agency for Planning	Illinois 47 in Grundy County. Critical facility for growing agriculture, distribution, and manufac	3.72
Two Rivers Regional Council	Truck congestion due to plethora of truck services at this exit. Popular waypoint	3.64
Southern Five RPC	Major connectivity route from Cape Girardeau, MO to Cairo, IL	20.59



**MOVING  
ILLINOIS  
AHEAD.**



# Data Used to Rank Mileage Segments

## Criteria:

- Connectivity
- Economic Impact
- Freight Density
- Congestion
- Safety
- Condition
- Environment

## Data Source:

IDOT Road Inventory

US Census Bureau

IDOT Roadway Inventory

CMAP Data Source

IDOT Traffic Incidents

IDOT Bridge Inventory

EPA Emission Data



**MOVING  
ILLINOIS  
AHEAD.**





# Summary

- ❑ 2,454 corridor miles selected
- ❑ 204 segments selected
  - 1838 miles selected by RPC's
  - Average length 10 miles
  - 615 miles selected by Mid-West Truckers
  - Average length 27.95 miles
  - 1044 miles connect directly to IL Primary Freight Network
  - 14 of 102 counties show positive population growth to achieve Economic Impact Rating
  - 3234 hours of congestion were quantified over 4566 miles
  - 29 submitted segments contained deficient bridges
  - 401 truck incidents were identified on submitted segments
  - 222.million tons of CO2 were measured on submitted segments
  - No segment was tied with another segment in scoring
  - Top 8 segments, represented 424 miles were less than 1 point apart



**MOVING  
ILLINOIS  
AHEAD.**



# Thank You!!!

Here is the link to the tool. We will not be adding anymore comments to the survey which is now closed.

[https://osgisomg.com/map\\_survey/](https://osgisomg.com/map_survey/)

Thank you to everyone who participated. We appreciate all the brave stakeholders who took some time to draw on a map and think about critical rural freight corridors.



**MOVING  
ILLINOIS  
AHEAD.**



# Questions?



**MOVING  
ILLINOIS  
AHEAD.**

