

Statewide Planning and Research Funds

Illinois Department of Transportation

July 26, 2018

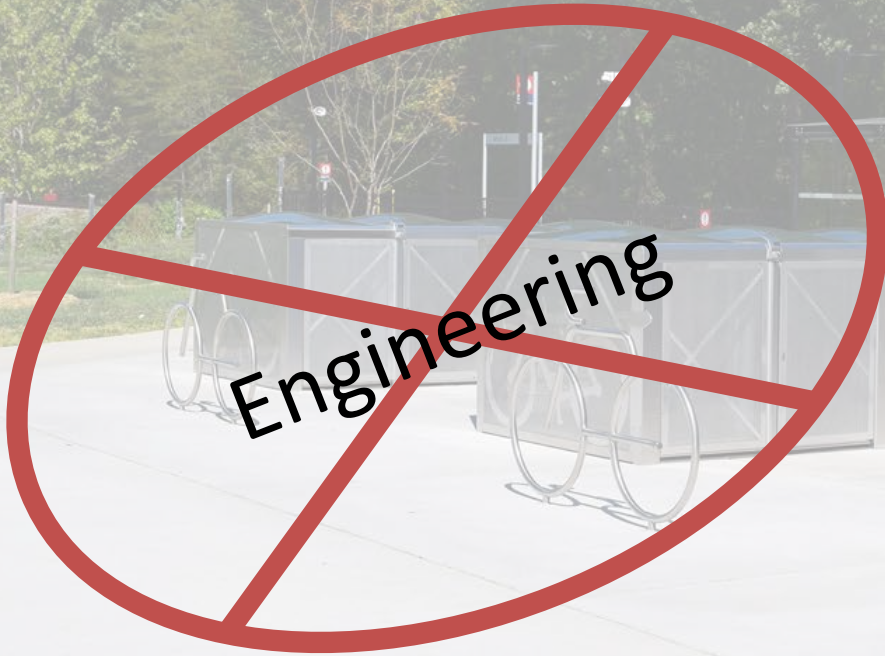
Illinois State Freight Advisory Council



Source of Funding

- SPR funds are a set-a-side from federal transportation funds
- Federal Funds
- Require 20% match
- Approximately \$20 million is available
- No project size limit (average is \$400,000)
- Multiple years of funding can be awarded

Eligibility of Funds

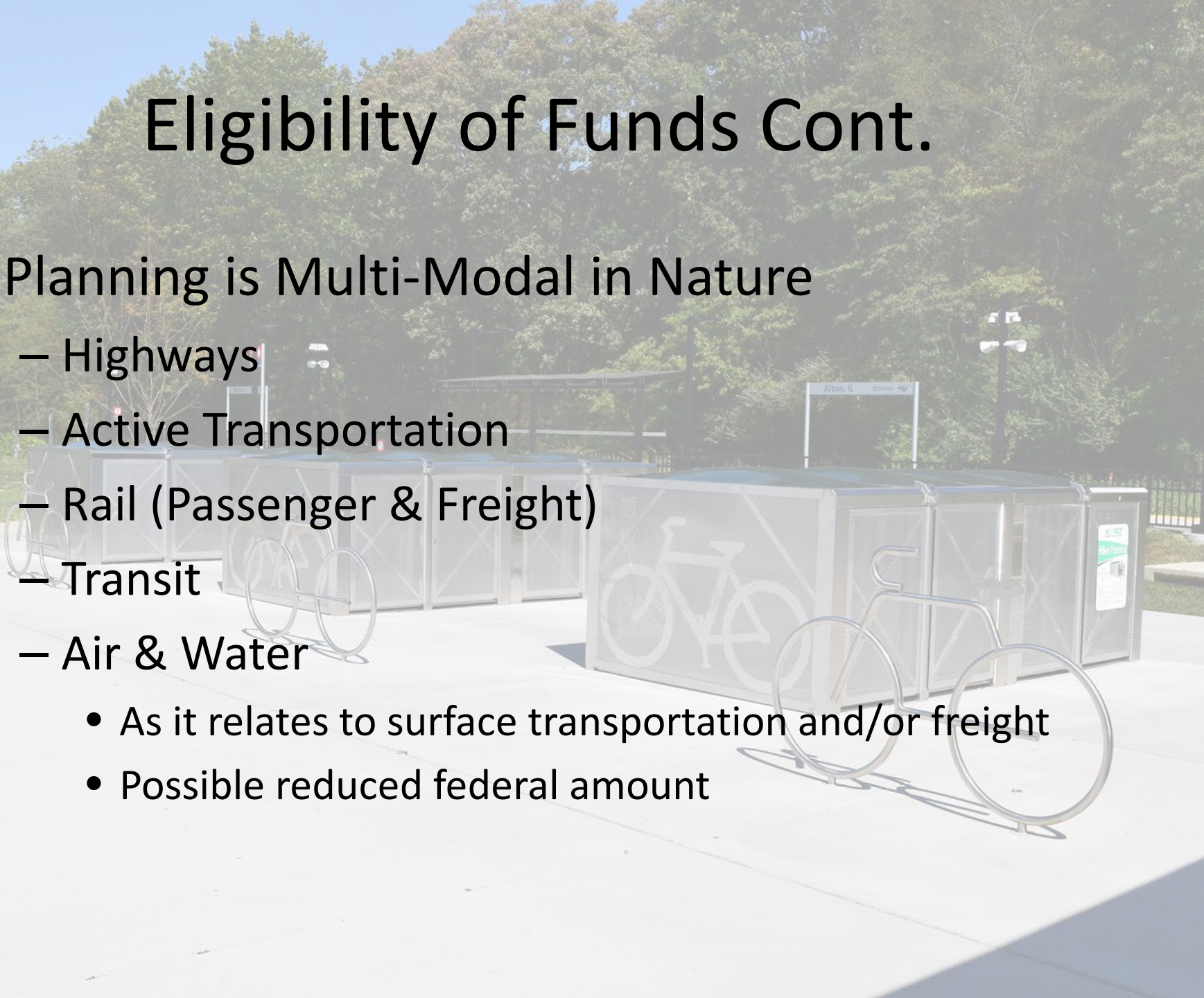


Engineering

- Planning studies
- Data purchase, collection, and/or analysis
- Program development activities
- Performance management activities
- Coordination/outreach activities

Eligibility of Funds Cont.

- Planning is Multi-Modal in Nature
 - Highways
 - Active Transportation
 - Rail (Passenger & Freight)
 - Transit
 - Air & Water
 - As it relates to surface transportation and/or freight
 - Possible reduced federal amount



Who?

Governmental Agencies

- ✓ IDOT
- ✓ Other State Agencies
- ✓ Counties
- ✓ Municipalities
- ✓ Metropolitan Planning Organizations
- ✓ Governmental Councils
- ✓ Park Districts
- ✓ Forest Preserve Districts

Private Entities and Non-Profits must have a public sponsor.

What can you do with the funds?

Support Internal Agency Staff

Hire a Consultant for Assistance*

Purchase Data*

Purchase Equipment*

*Must follow federal and state procurement rules.



Project Prioritization

Long Range Transportation Plan

Asset Management

Performance Based Program Development



Illinois' Long Range Transportation Plan

Does the project help implement the goals/objectives outlined in the LRTP?



Illinois Department
of Transportation

ECONOMY

Improve Illinois' economy by providing transportation infrastructure that supports the efficient movement of people and goods.

LIVABILITY

Enhance the quality of life across the state by ensuring that transportation investments advance local goals, provide multimodal options, and preserve the environment.

MOBILITY

Support all modes of transportation to improve accessibility and safety by improving connections between all modes of transportation.

RESILIENCY

Proactively assess, plan and invest in the state's transportation system to ensure that our infrastructure is prepared to sustain and recover from extreme events and other disruptions.

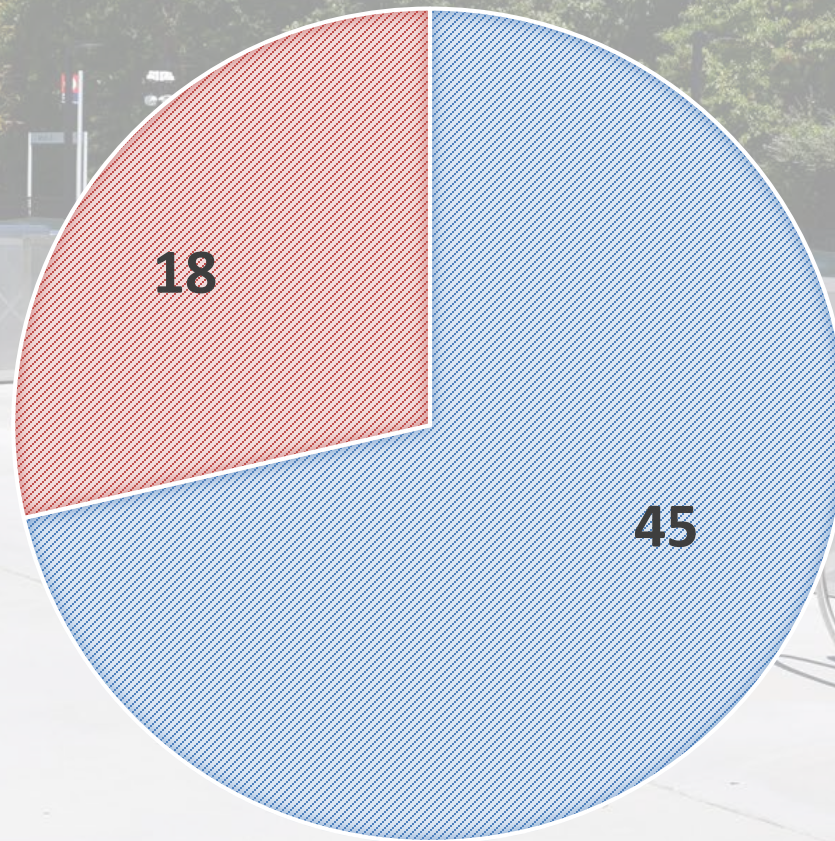
STEWARDSHIP

Safeguard existing funding and increase revenues to support system maintenance, modernization, and strategic growth of Illinois' transportation system.

PERFORMANCE GOALS

NUMBER OF PROJECTS

Local Projects State Projects



Freight Related Projects

Statewide Truck Bottleneck Study

**Bi-State Modeling Freight Flows & System
Performance**

Danville MPO Freight Study

Centralia Railroad Consolidation

CMAP Truck Routing and Community Studies

IEI Barge Expansion Planning & Feasibility Study

IDOT's Role

Providing funding

Currently processing paperwork so locals can access funds

Assigned project managers who will be that project's contact



Program Management

- You've been funded, what next?
 - If you are an IDOT project sponsor
 - Work with Bureau of Planning and other bureaus to get project started
 - If you are a non-IDOT project sponsor
 - Notice of State Award – July 1, 2018
 - Uniform Intergovernmental Agreement (UIGA)
 - Local and State Execution (6-8 weeks)
 - Start Procurement Processes
 - Invoice within 3 months of fully executed UIGA

**NO WORK CAN BE INVOICED IF FULLY EXECUTED
AGREEMENT IS NOT IN PLACE**

Questions



<http://www.idot.illinois.gov/transportation-system/transportation-management/planning/index>

Holly Ostdick

Bureau Chief, Planning

Office of Planning & Programming | Illinois Department of Transportation

Office: (217) 557-4145 | Cell: (217) 206-0655