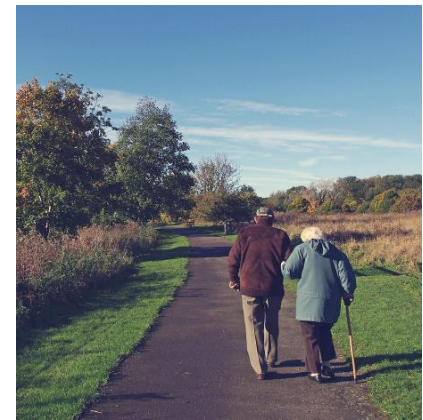
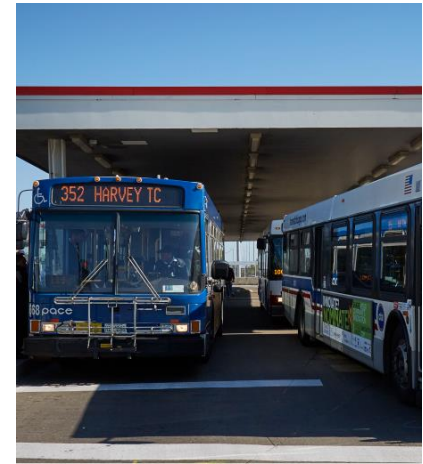




Chicago Metropolitan
Agency for Planning

Working with your Metropolitan Planning Organization

Tom Murtha, Senior Planner
Chicago Metropolitan Agency for Planning



130th at Torrence

CMAP programmed substantial funding for this highway-rail grade separation serving Port District and an auto assembly plant. Before the grade separation, stopped trains often blocked the roads.



Port Master Plan

The Illinois International Port District (IIPD), in partnership with CMAP, developed the Port Master Plan. The Master Plan was adopted by the IIPD Board of Directors in June, 2022. CMAP initially completed a Planning Priorities Report.



Calumet River Bridges

Bridge rehabilitations will improve freight flow to the IIPD. They also will support critical connections between Chicago's South Side and the region. This rehabilitation project was identified as a regional priority for IJA funding.



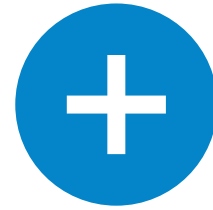
Freight-system assessment

For FY 2025, CMAP is engaged in a freight-system assessment that will include an update to our inventory of regional water facilities.



Who we are

Federal metropolitan
planning
organization (MPO)



State regional
planning agency





Chicago Metropolitan
Agency for Planning

Mission

To serve the people of the region
by driving innovation, fostering
shared action, and advancing
toward a common vision



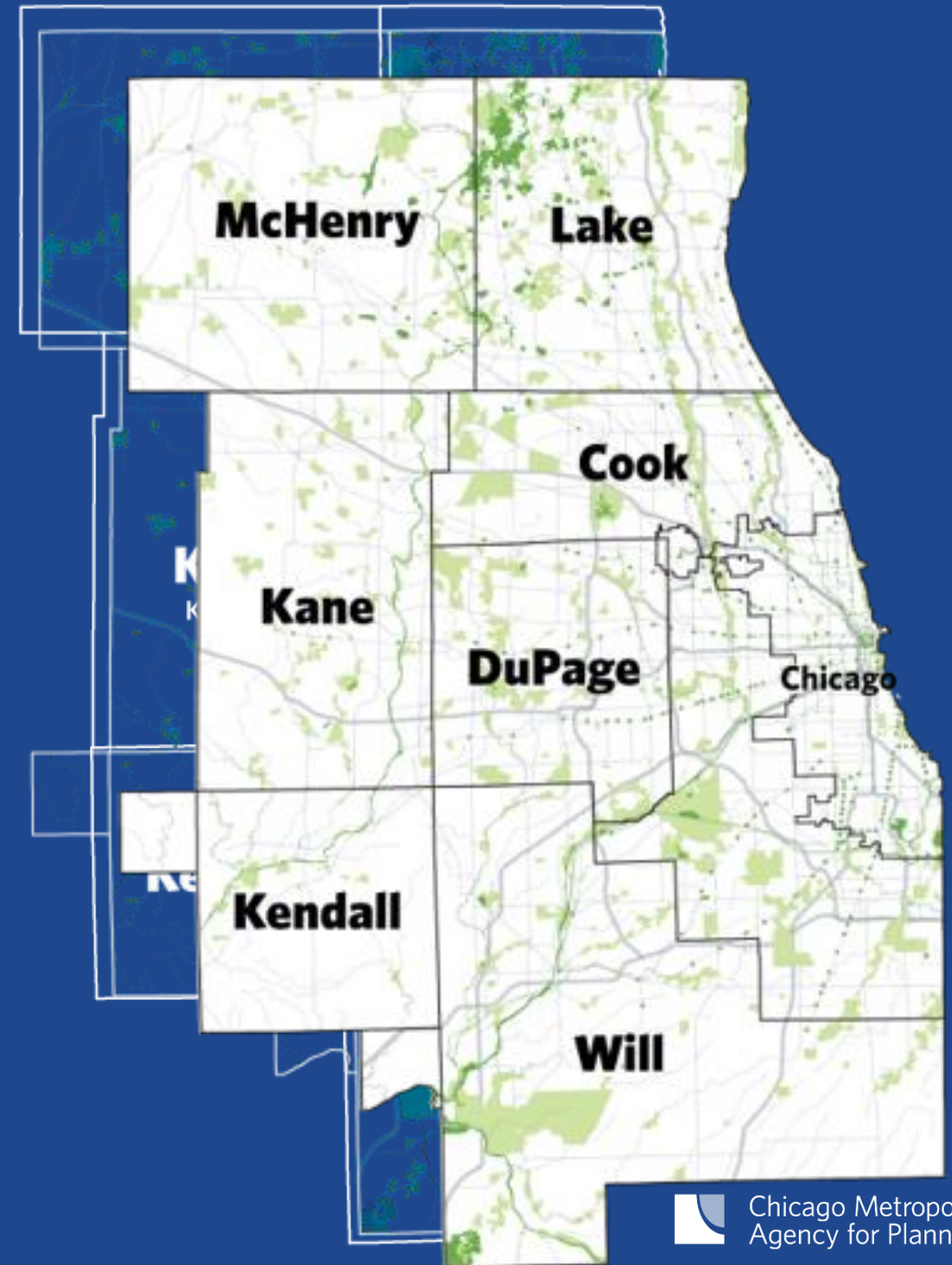
CMAP serves:

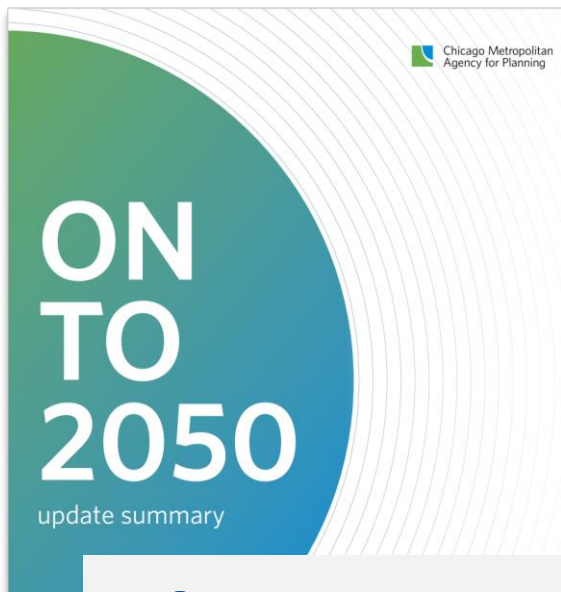
8.6 million people

284 municipalities

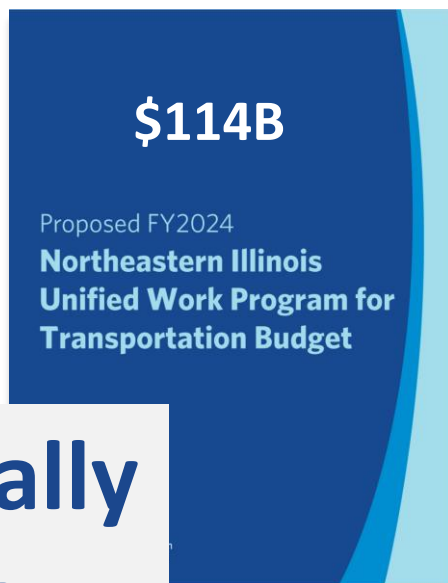
7 counties

5,600 square miles



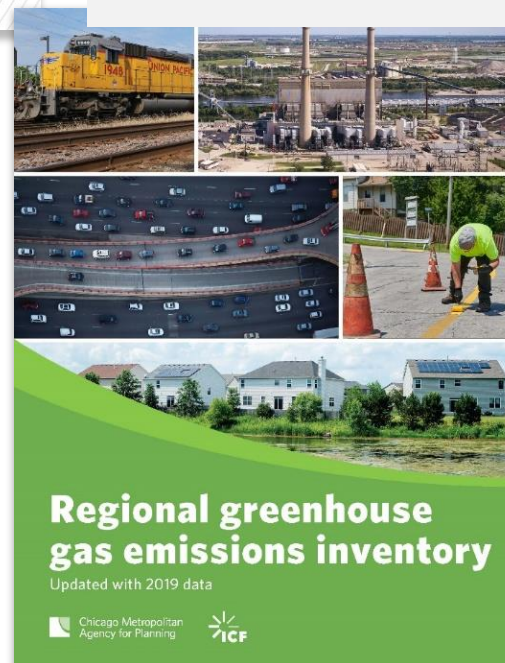
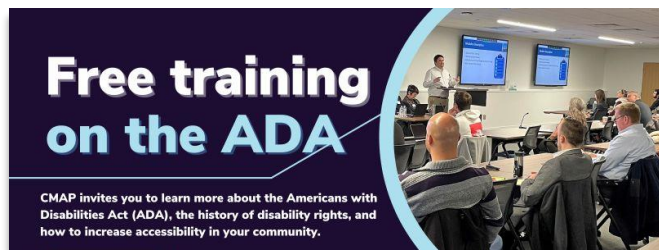


Prioritize & program



Research, analyze, forecast, model & share data

Plan regionally & locally

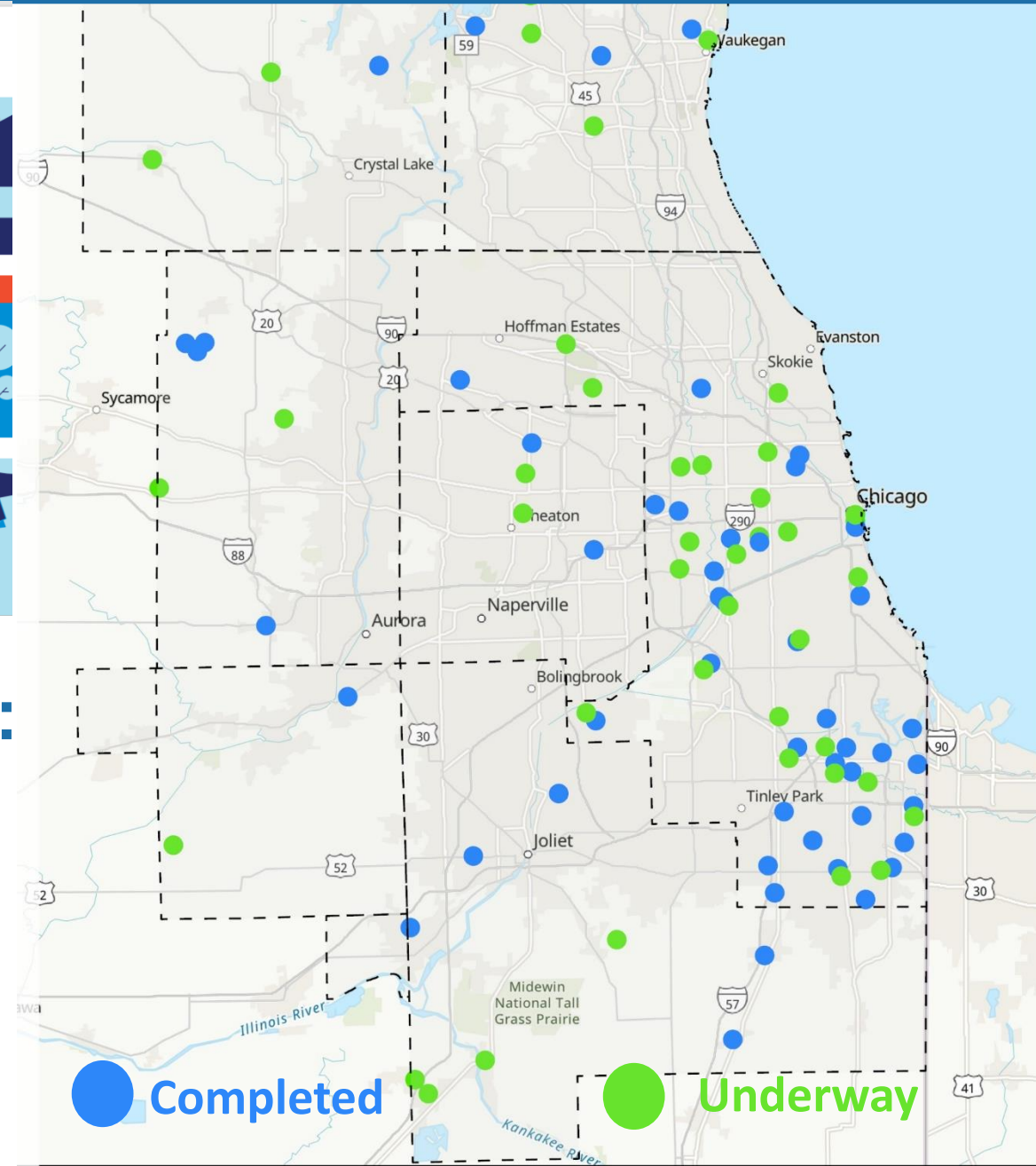


Collaborate, convene & build consensus



Influence & advance sound policy

Deliver technical assistance to build capacity



2019 – 2024:
75 Total
Technical
Assistance
Projects

MPOs and how it works in northeastern IL



1962 - President JFK signs Federal-Aid Highway Act creating MPOs



Federal MPO requirements

- Allocate federal transportation funds
- Manage 3C transportation planning process
- Develop the LRTP plan every 8 years
- Produce the TIP and UWP annually
- Conduct an inclusive public participation process
- Maintain travel models and data resources to support air quality conformity determinations, transportation equity analyses, and long and short-range planning work and initiatives



State regional planning agency requirements

- Streamlined, consolidated regional planning and integrated plans for land use and transportation
- Provide a policy framework under which all regional plans are developed.
- Coordinate regional transportation and land use planning
- Identify and promote regional priorities

MPOs! Who are we?

Federal Highway Act of 1962 required urban areas of more than 50,000 residents to create or designate an interjurisdictional planning organization responsible for carrying out a **continuous, cooperative, and comprehensive (3-C) transportation planning process**.

By 1965, all the **224 existing urbanized areas** in the country had a transportation planning process underway.



Regional transportation planning process

What is the future transportation system we want?



What are the challenges and opportunities to get there?



How will we achieve the transportation system we want?



Our transportation infrastructure

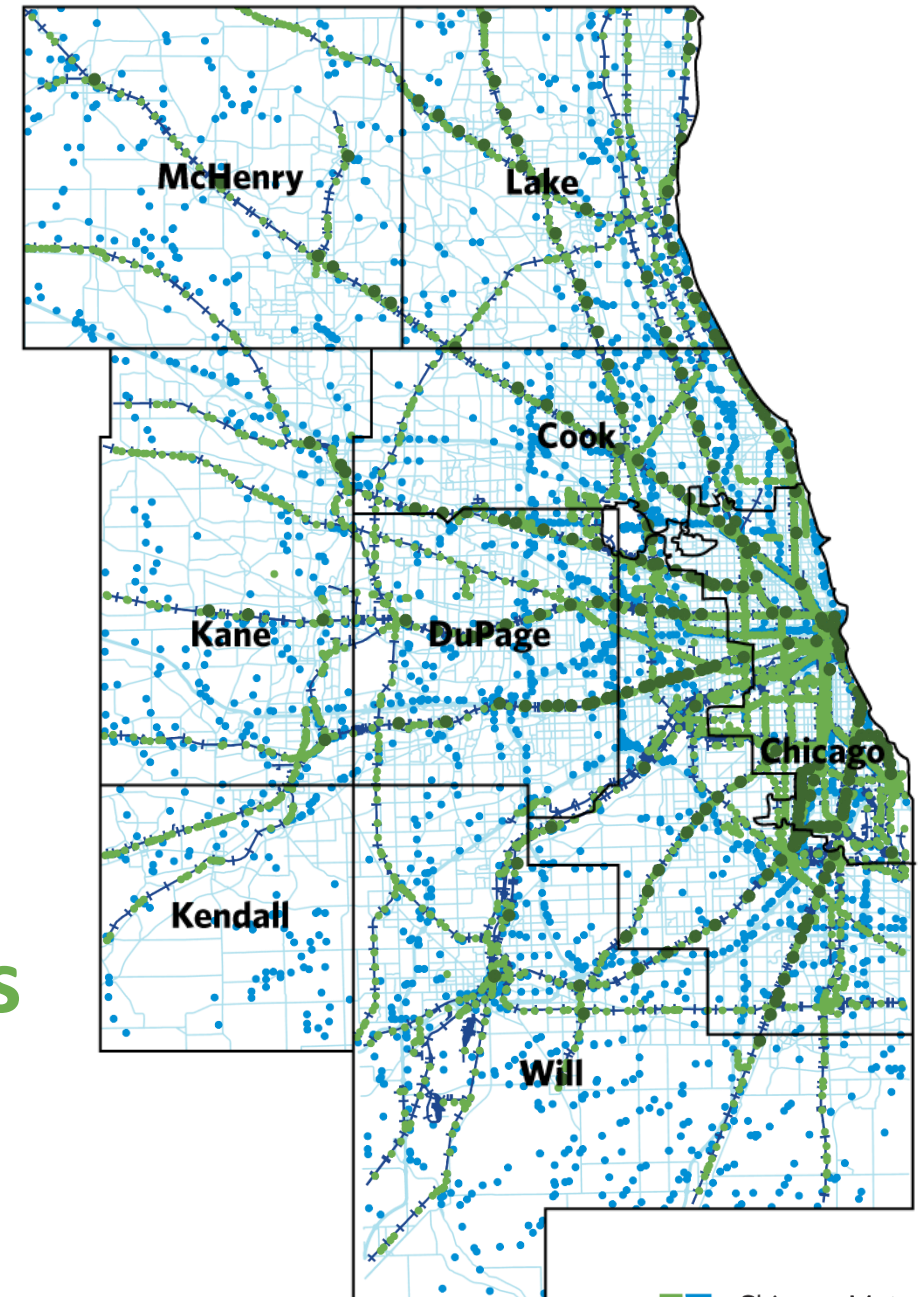
29,989 miles of federal-aid roads

3,650 bridges

7,200 miles of rail lines

1,646 at grade (level) rail crossings

242 Metra stations



Our MPO's freight system

- 10 Interstate highways with 434 centerline miles
- 1,864 centerline miles for the remainder of the NHS
- 2 commercial-service primary large-hub airports
- 6 Class I freight railroads
 - 18 intermodal rail-truck terminals (15.8M TEUs in 2023)
 - 11 rail classification yards
- Great Lakes and Illinois Waterway waterborne freight
 - 3 Port Districts
 - Chicago Area Waterway System

How transportation planning funds flow



**“Federal Mark”
Metropolitan
planning
(PL) funds**



**Illinois
Department of
Transportation**



**Allocated to
16 MPOs**



CMAP



**Northeastern
Illinois Unified
Work Plan
(UWP)**

Non-federal funds are also required



IDOT

+



**Local
contributions**

=

**20%
Local match for
federal funds
& supports
other regional
priorities**

Programming of federal transportation funds



The Infrastructure Investment and Jobs Act

\$120M ('22) → \$200M annually
Funds to region doubled



Surface Transportation Program (STP)

- Transit
- Municipalities
- Counties



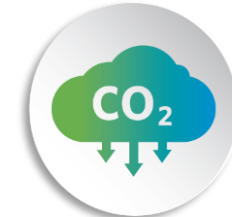
Transportation Alternatives Program (TAP-L)

- Park districts
- Municipalities
- Forest preserves



Congestion Mitigation Air Quality Improvement Program

- Transit
- Municipalities
- IDOT
- Private providers
- Counties



Carbon Reduction Program

- Transit
- Municipalities

FY25 Transportation, Housing and Urban Development (THUD) appropriations



U.S. Department of Transportation

RAISE GRANTS

Rebuilding American Infrastructure
with Sustainability and Equity



U.S. Department of Transportation

Maritime Administration

Port Infrastructure Development Grant Program



U.S. Department of Transportation

Office of Multimodal Freight Infrastructure and Policy



U.S. Department of Transportation
Federal Railroad Administration

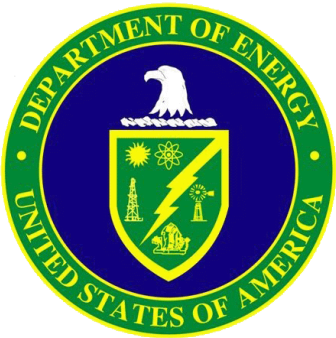
**Consolidated Rail Infrastructure & Safety Improvements
Grant Program**

Other funding



Climate Pollution
Reduction Grant
(CPRG) funds

Regional Climate



Clean Energy to
Communities (C2C)
funds to help reduce

GHG emissions



Action Plan

S | S
4 | A

County-wide
safety action

plans



Illinois Department
of Transportation

State Planning Research (SPR) grant funds work on
speed management; ADA transition plans for the
region; Ecopia data for statewide land use analysis



Regional infrastructure
accelerator



Illinois
Department of
**Natural
Resources**

Water
supply

planning



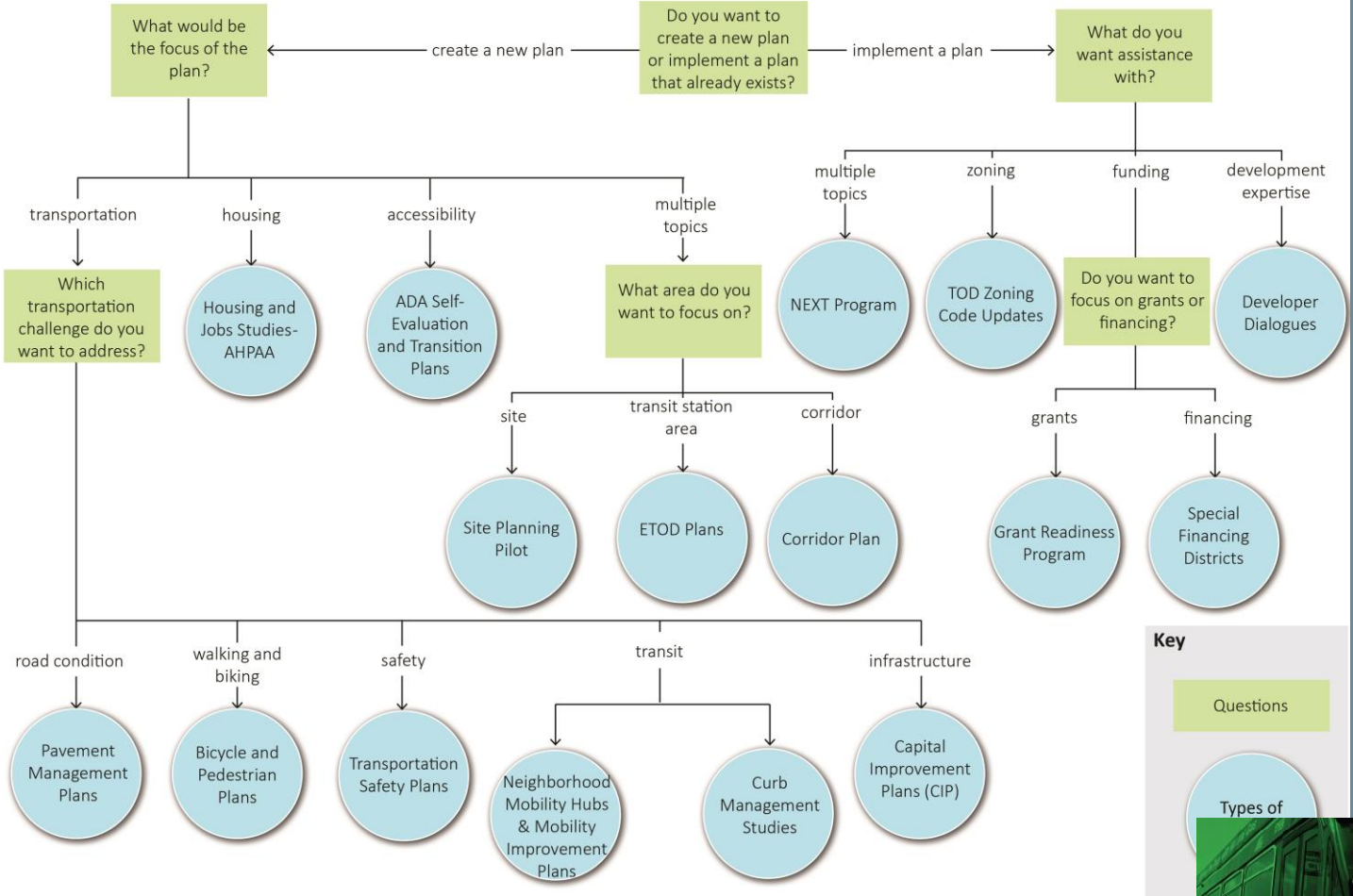
Water quality

management plan

Technical assistance programs



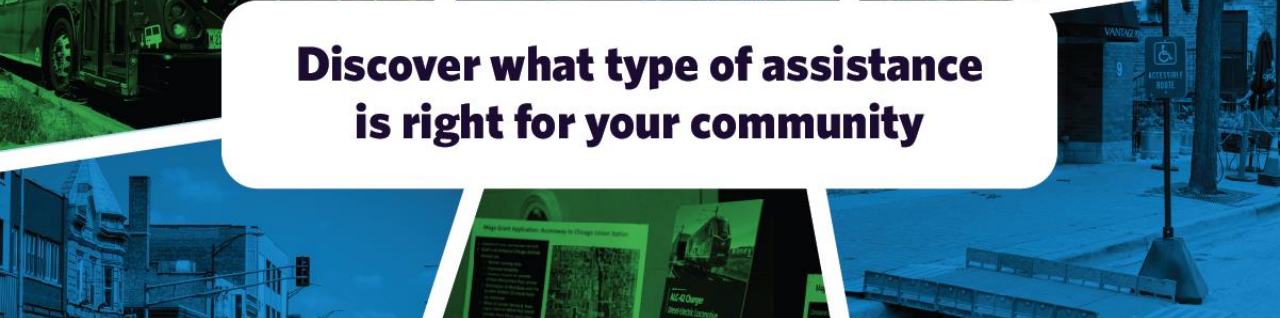
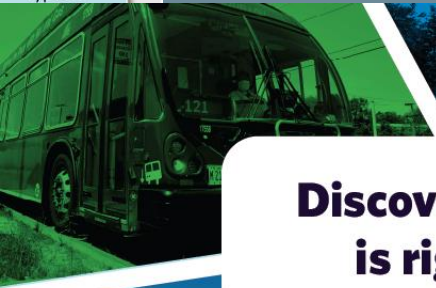
START HERE



2024

Project Awards for Technical Assistance

Chicago Metropolitan Agency for Planning



Discover what type of assistance is right for your community

Q&A



Illustration: CMAP, created with DALL-E, 2024

Thank you!