



BLUE RIBBON COMMISSION

**on Transportation Infrastructure
Funding and Policy**



COMMISSION MEETING

November 20, 2024

MEETING AGENDA

10:00am:



Introduction (Chair Osman)
Roll Call (Morreale Communications)

10:10am:



Approval of Minutes – September 17, 2024
(Chair Osman)

10:15am:



Technical Support Procurement Update
(Director Bieneman)

10:40am:



2024 FHWA PM2 & PM3 Performance Targets
(Planning and Systems (Section Chief William
(Bill) Morgan)

11:05am:



Performance Based Programming Memo
(Director Bieneman)

11:30am:



Update on 2025 Commission Meeting
Schedule (Chair Osman)

11:45am:



New Business (Chair Osman)

11:50am:



Public Comment (Chair Osman)

11:55am:



Next Meeting (Chair Osman)

12:00pm:



Adjourn (Chair Osman)

MEETING MINUTES APPROVAL



- 1 Review of meeting minutes from the **September 17th** Commission meeting.
- 2 Are there any requested changes?

TECHNICAL SUPPORT PROCUREMENT UPDATE



Technical Support Procurement Update

Led by Director Bieneman



TRANSPORTATION INFRASTRUCTURE AND POLICY REPORT

WITH YOU TODAY



Ted Hamer
Engagement Lead
KPMG



Mike Stacey
Project Manager
KPMG



Rocco Zuccherro
Senior Advisor
Metro Strategies



Justine Sydello
Senior Advisor
CDM Smith

YOUR CONSULTANT TEAM



One of the leading infrastructure advisors in the market that has worked with DOTs on organizational strategy, data governance, technology, funding and financing, and workforce. KPMG has worked with 25+ DOTs across the U.S. on the very issues the BRC is tackling



BEP registered and has extensive stakeholder and communications experience with IDOT and public institutions throughout Illinois. With the recent addition of Rocco Zucchero, Metro also brings the BRC strategic understanding of Illinois' transportation landscape



Brings direct experience working with IDOT on some of its most important efforts, including future funding analysis – an area where CDM Smith is market-leading based on their experiences with DOTs across the United States



BSquared Consulting
Group, LLC

BEP registered and principal Tracey Bailey provides BRC experience with workforce, business, and organizational development



Acclaim Collier
Engineering

BEP registered and principal Lanyea Griffin led Illinois Toll Highway Authority and brings the BRC extensive experience across Illinois transportation environment



Veterans registered and brings a direct experience supporting IDOT with planning, study, design, and construction inspection on a variety of corridor, interchange, structural, and state / local road projects



BEP registered and provides you experience in Illinois and across the country in asset management, technology consultancy, systems engineering and resiliency/sustainability

CONSULTANT TEAM ROLES



Lead:

- Overall project delivery
- Governance & operations analysis
- Labor, equipment, & materials analysis

Support:

- Funding & financing analysis



Lead:

- Stakeholder outreach
- BRC meeting facilitation

Support:

- Overall project delivery



Lead:

- Funding & financing analysis

Support:

- Overall project delivery



BSquared Consulting
Group, LLC

Lead:

- Equity considerations across all workstreams



Acclaim Collier
Engineering

Support:

- Labor, equipment, & materials analysis
- Governance & operations analysis
- Project approval and completion process analysis



Lead:

- Project approval and completion process analysis



Business Solutions for Transportation

Support:

- Governance & operations analysis, with a focus on technology



WORK PLAN COMPONENTS

1

Governance & Operations

- Identify options for IDOT's role and responsibilities in the Illinois transportation network
- Identify IDOT's operating needs to support its future role
- Identify options for a faster and more efficient project approval and completion process

2

Funding & Financing

- Assess the current transportation funding landscape
- Identify alternative revenue options
- Assess ROI / performance against outcome-based goals

3

Labor, Equipment & Materials

- Identify labor needs and estimated supply for LRTP
- Identify equipment and materials needs for LRTP
- Identify IDOT's workforce needs and estimated supply

4

Equity & Sustainability

- Consider current and projected performance against equity goals for options presented to BRC
- Consider current and projected performance against sustainability goals for options presented to BRC

2024 FHWA PM2 & PM3 Performance Targets



2024 FHWA PM2 & PM3 Performance Targets

Led by IDOT Planning and Systems Section
Chief William (Bill) Morgan

PERFORMANCE-BASED PROGRAMMING MEMO



Performance-Based Programming Memo Led by Director Bieneman

PERFORMANCE-BASED PROGRAMMING



- 1 Background and History of Performance-based Programming at IDOT
- 2 Current Practices
- 3 Future Considerations



BACKGROUND AND HISTORY OF PERFORMANCE-BASED PROGRAMMING IN ILLINOIS

WHAT IS PERFORMANCE-BASED PROGRAMMING?

Strategies and priorities to guide the allocation of resources to projects that are selected to achieve goals, objectives, and targets.

- Allocating resources across a portfolio (e.g., maintenance vs. new capacity)
- Allocating resources within a portfolio (e.g., prioritization of various safety investment opportunities)

PERFORMANCE-BASED PROGRAMMING IN ILLINOIS

Public Act 102-0573 (2021)

Established a multi-modal, data-driven transportation improvement program aligned with state performance targets, consider emissions and climate change, and reduce disparities among EJ communities by requiring IDOT to develop:

- Risk-based highway asset management plan
- Needs-based transit asset management plan (outside RTA)
- Performance-based programming approach for investments that add capacity to the existing system

Initiatives and outcomes

- Multi-modal MYP began in FY2024
- Transit and highway asset management plans refined in FY2023
- *Data Driven Decisions Tool* adopted in FY2023
- Enterprise asset management system implemented in FY2025



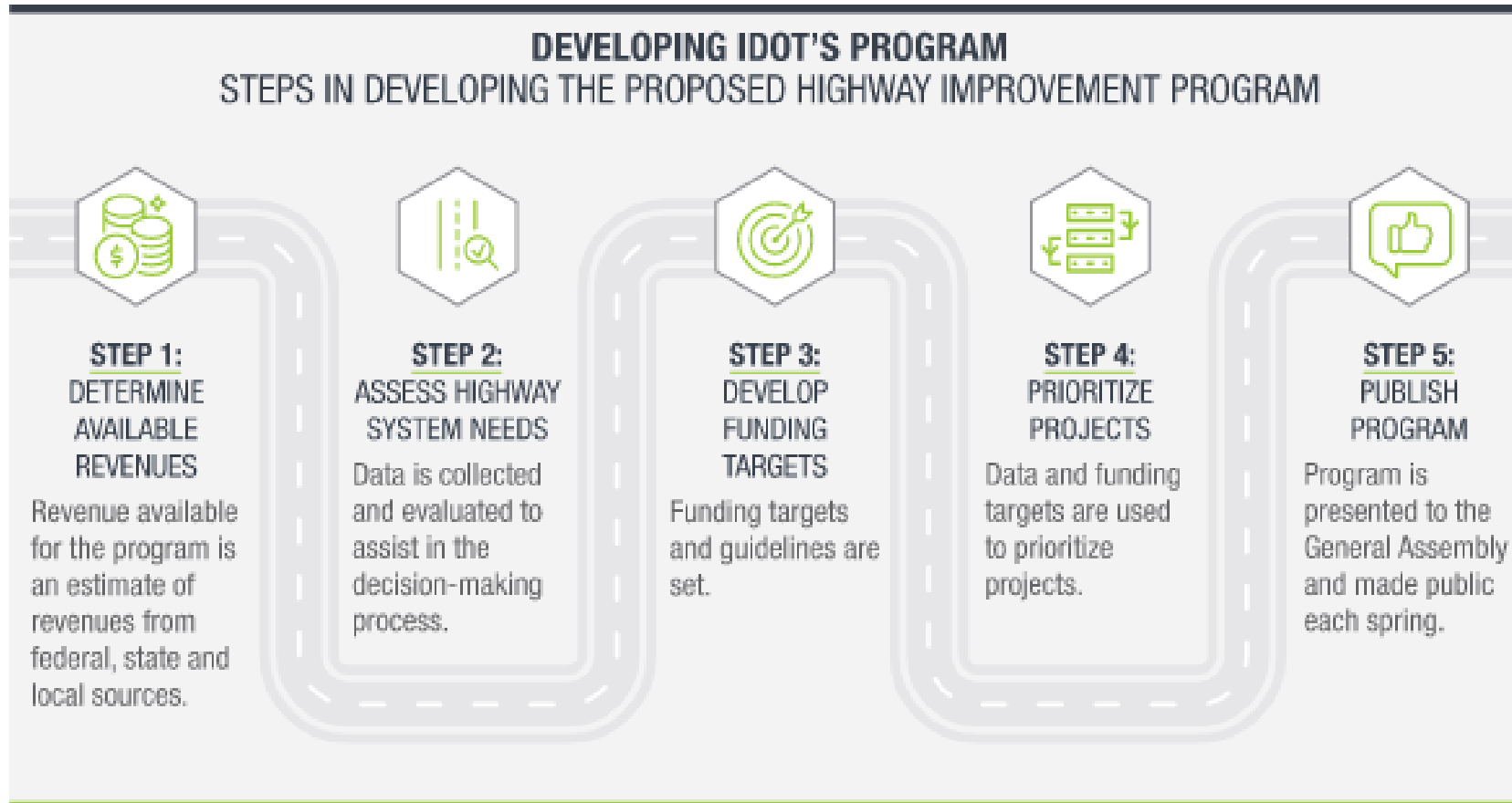
CURRENT PERFORMANCE-BASED PROGRAMMING PRACTICES AT IDOT

PERFORMANCE-BASED PROGRAMMING ELEMENTS

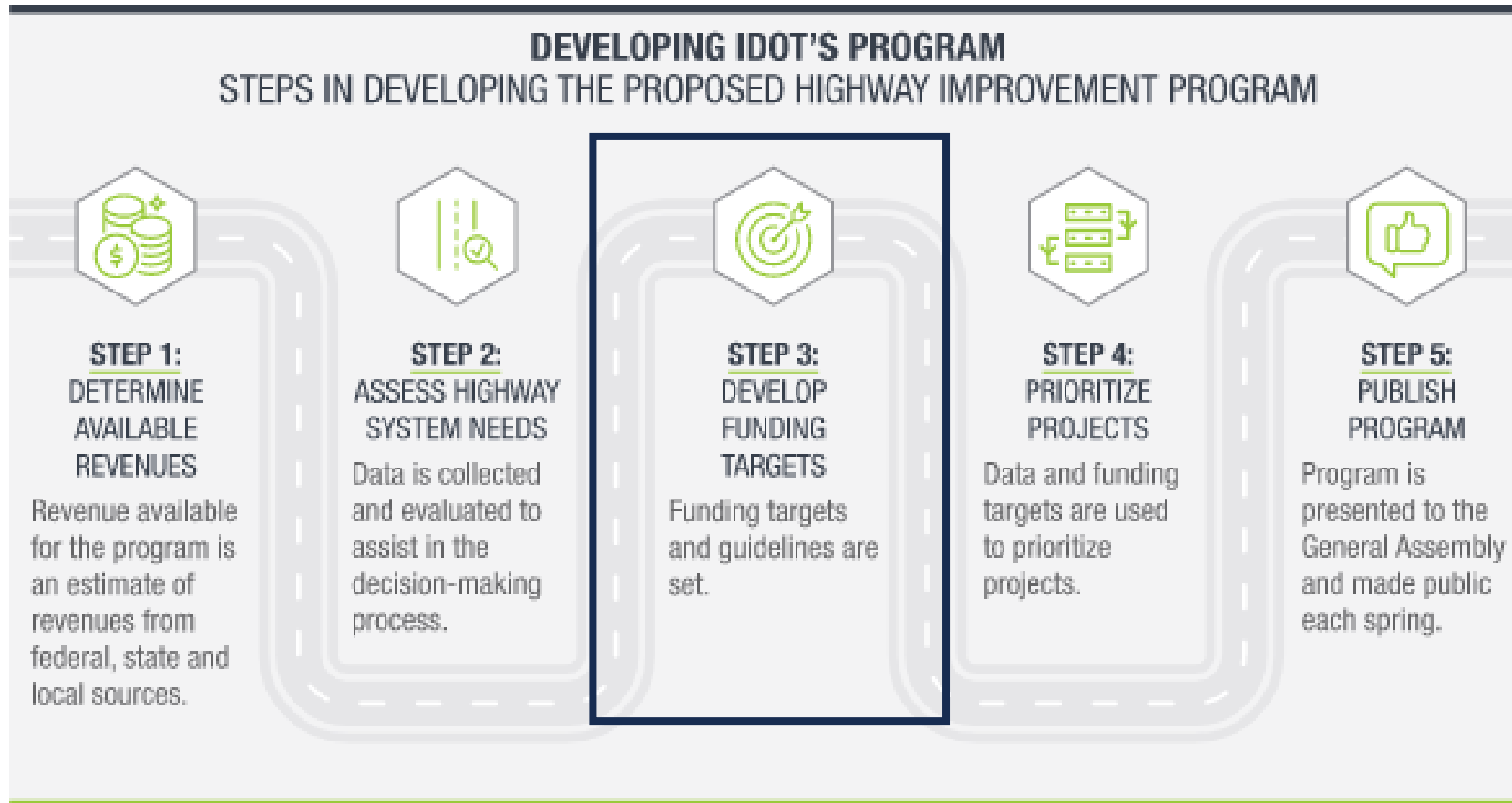
The bulk of IDOT's performance-based programming decisions occur through the development and adoption of the 6-year Multi-Year Program (MYP), most recently for FY2025-2030. This multimodal plan includes:

- **Highway Improvement Program**
 - Transportation Asset Management Plan (TAMP)
 - Data-Driven Decisions (DDD) Tool
- **Transit**
- **Freight Rail**
- **Aviation**
- **Marine**

HIGHWAY IMPROVEMENT PROGRAM



HIGHWAY IMPROVEMENT PROGRAM



IDOT DEVELOPS HIGHWAY FUNDING TARGETS



- **Local Program**
- **Statewide (centralized) Programs**
- **District Programs**

DISTRICTS DEVELOP PROGRAMS

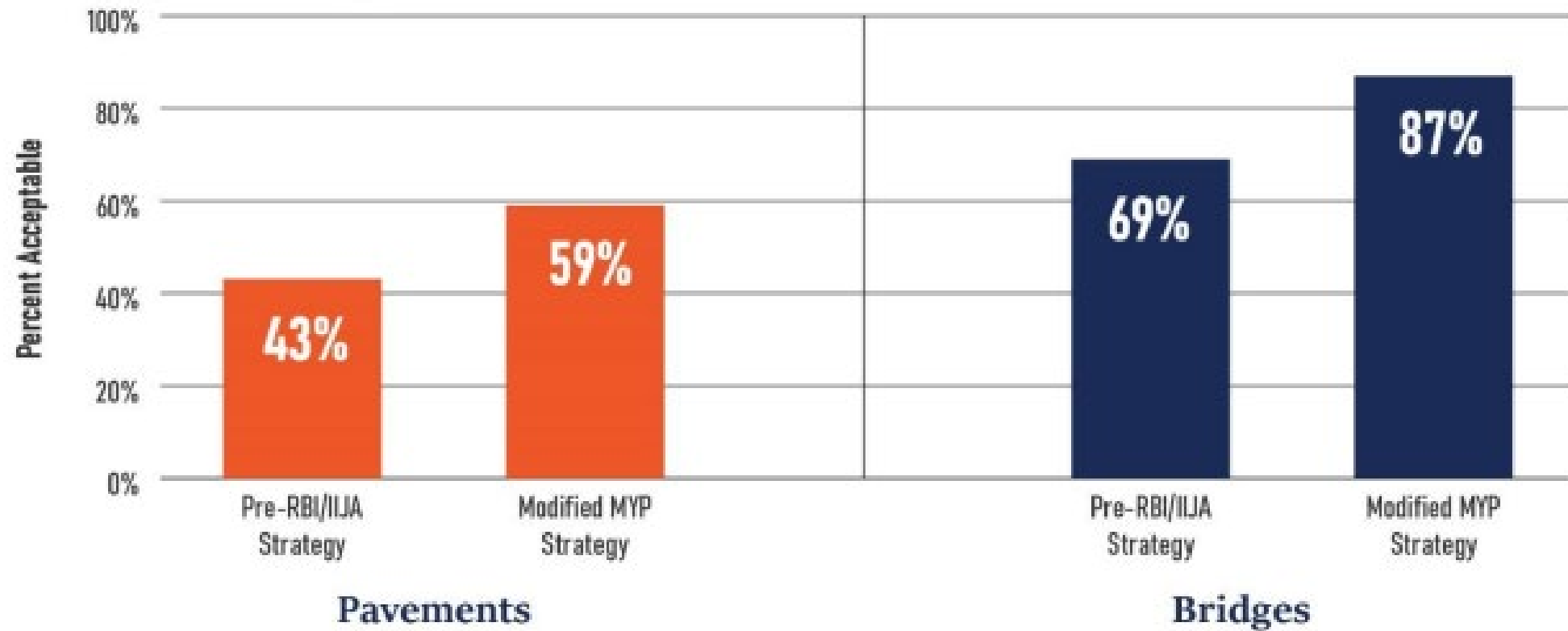


- **Assess projects and prioritize those most suited to achieving agency, local, state, and federal goals and priorities**
- **Use TAMP and DDD tool to inform project assessment**
- **Submit projects for consideration in MYP**



TRANSPORTATION ASSET MANAGEMENT PLAN (TAMP)

EXISTING ASSET INVESTMENTS REPRESENT 75% OF HIGHWAY PROGRAM IN MYP



DATA DRIVEN DECISIONS (DDD) TOOL



CAPACITY EXPANSION REPRESENTS 10% OF HIGHWAY PROGRAM IN MYP

- Additional lanes on an existing road
- A new road or a new alignment of a roadway
- A new or expanded bridge or interchange
- A new alignment of a railroad grade separation

DATA DRIVEN DECISIONS (DDD) TOOL



CAPACITY EXPANSION REPRESENTS 10% OF HIGHWAY PROGRAM IN MYP

Goal (Weight)	Criteria
Traffic operations and congestion (20%)	<ul style="list-style-type: none">▪ Average annual daily traffic (AADT) based on current volumes▪ Percent change in annual vehicle miles of travel (AVMT) over the next 20 years▪ Variability in travel times as measured by the travel time index (TTI)
Safety (30%)	<ul style="list-style-type: none">▪ Frequency of major crashes, weighted by severity
Economic development (20%)	<ul style="list-style-type: none">▪ Location on the National Highway Freight Network (NHFN)▪ Major development recently occurred or underway▪ Accessibility and proximity to intermodal facilities
Environmental impacts/livability (20%)	<ul style="list-style-type: none">▪ Location in a low-income and/or minority population area▪ Level of environmental impact analysis required▪ Location of a past emergency event repair▪ Equity: Under development▪ Emissions: Under development
Regional ranking (10%)	<ul style="list-style-type: none">▪ IDOT District rank of proposed project by importance

DATA DRIVEN DECISIONS (DDD) TOOL



CAPACITY EXPANSION REPRESENTS 25% OF HIGHWAY PROGRAM IN MYP

PROJECT
CRITERIA SCORE

=

(Project Raw Value – Lowest Value)

(Highest Value – Lowest Value)

Project Raw Value = Project input number for criteria

Lowest Value = Lowest Value within the set of projects for the criteria

Highest Value = Highest Value within the set of projects for the criteria

Out of **34** projects considered for the 2023-2028 cycle, **13** were advanced into the final MYP

MULTI-MODAL IMPROVEMENT PROGRAMS: TRANSIT

Category	Weighting (round 3)
Planning & Coordination	34.7%
State of Good Repair	18.8%
New & Expansion Projects	20.6%
Innovation & Environmental Sustainability	14.7%
System & Performance	3.5%
Application	7.6%

*Rebuild Illinois made more than **\$350 million** to support investments by the 55 transit service providers outside of the RTA region. IDOT made awards based on a data-driven assessment and scoring of projects.*

MULTI-MODAL IMPROVEMENT PROGRAMS: OTHER MODES



Freight Rail

- Rail Freight Program
- Competitive Freight Program
- At-grade crossing improvements



Aviation

- Funding provided by the state represent less than **2%** of the total statewide
- Illinois Aviation System Plan (IASP)



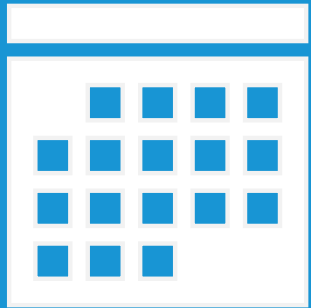
Marine

- Illinois Marine Transportation System (IMTS) Plan
- Illinois Port Facilities Capital Grant Investment Program



FUTURE CONSIDERATIONS FOR PERFORMANCE-BASED PROGRAMMING

2025 COMMISSION MEETING SCHEDULE UPDATE



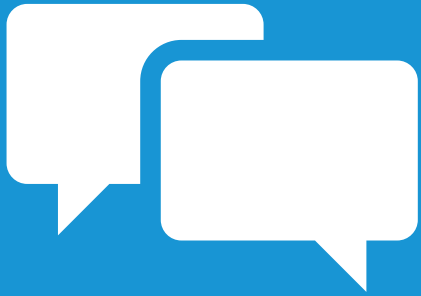
2025 Commission Meeting Schedule Update Led by Chair Osman

NEW BUSINESS



Is there any **new business** the Commission would like to discuss?

PUBLIC COMMENT



We will now open the floor
for **public comment.**

NEXT MEETING



The date of the next Commission meeting is **Tuesday, December 17th.**

ADJOURN



THANK YOU!


BLUE RIBBON
COMMISSION

on Transportation Infrastructure
Funding and Policy

