



ILLINOIS HIGH-SPEED RAIL

COMMISSION

IDOT Headquarters: Springfield & Chicago

December 16, 2024



Agenda



10:30am:



Welcome & Introduction
(Chair Derwinski)
Roll Call (Morreale Communications)

10:35am:



Minutes Approval from October 21st
Commission Meeting (Chair Derwinski)

10:40am:



Technical Assistance and Support
Update (Quandel Consultants)

11:40am:



Commission Legislative Discussion
(Opened by Chair Derwinski)

12:00pm:



Review and Vote on Draft 2025
Commission Meeting Schedule
(Chair Derwinski)

12:25pm:



Public Comment

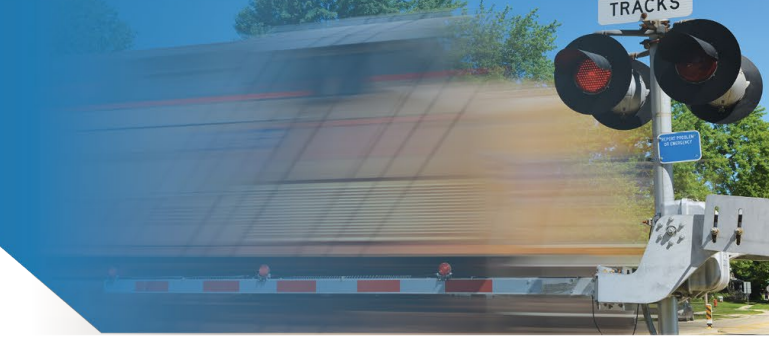
12:30pm:



Commission Meeting Adjourns



Minutes Approval



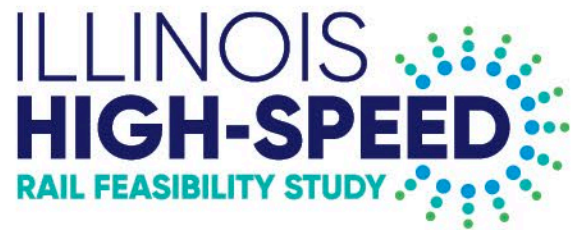
- Meeting minutes from the **October 21st** Commission meeting were circulated with the agenda prior to today's meeting.
- Are there any requested changes?

Technical Assistance and Support Update



Technical Assistance and Support Update

Presented by Quandel Consulting Team



Strengthening our State. Connecting the Region.

Illinois High-Speed Rail Commission Meeting

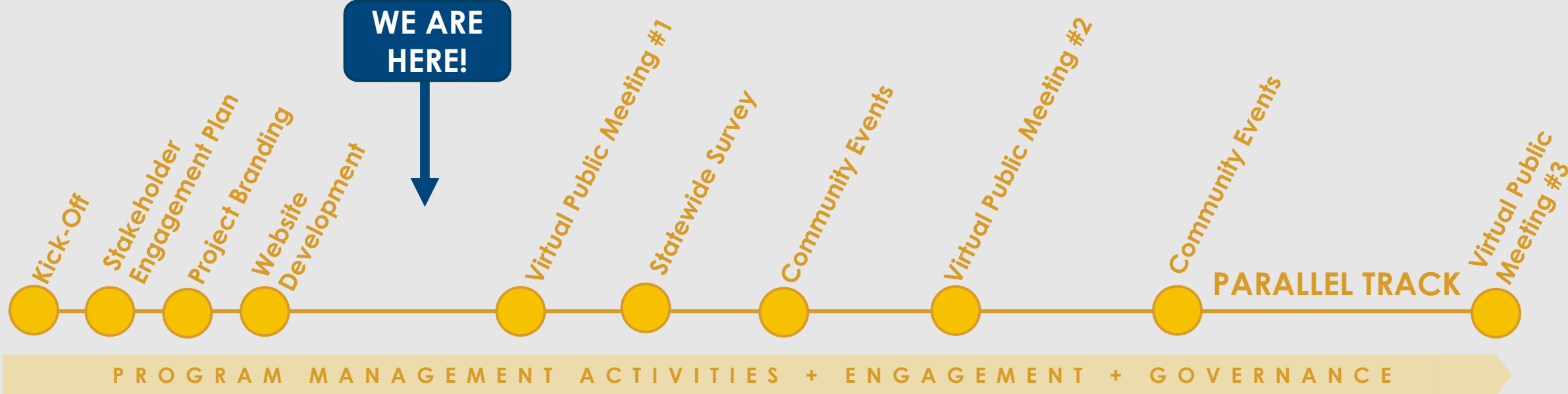
Monday, December 16, 2024

Agenda

- Project Timeline
- Alternatives Analysis
- Market Analysis
- Outreach & Engagement
- Draft Annual Report

Project Timeline

**WE ARE
HERE!**



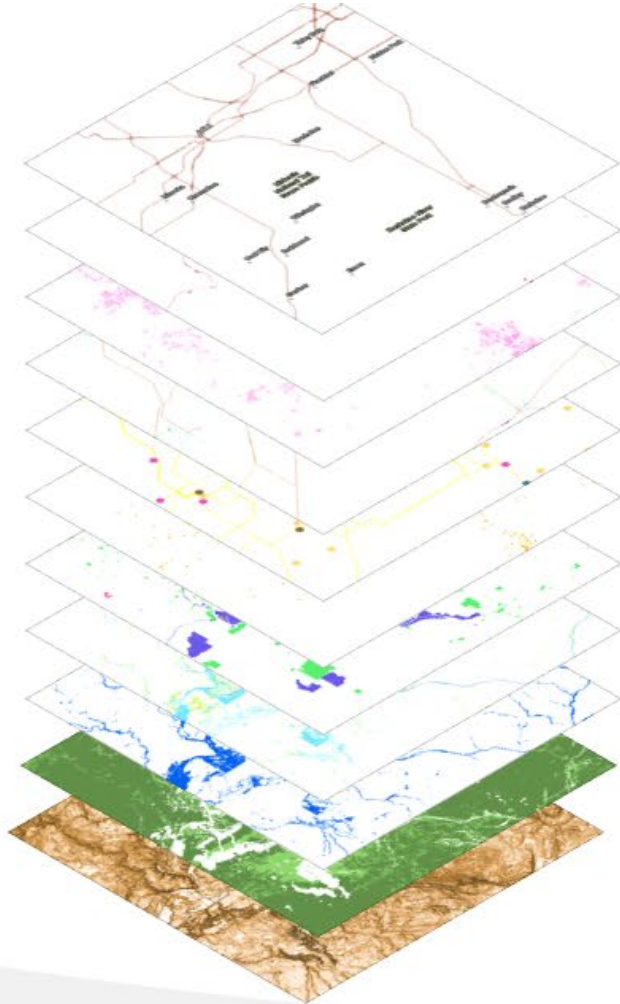
PARALLEL TRACK

STUDY TRACK

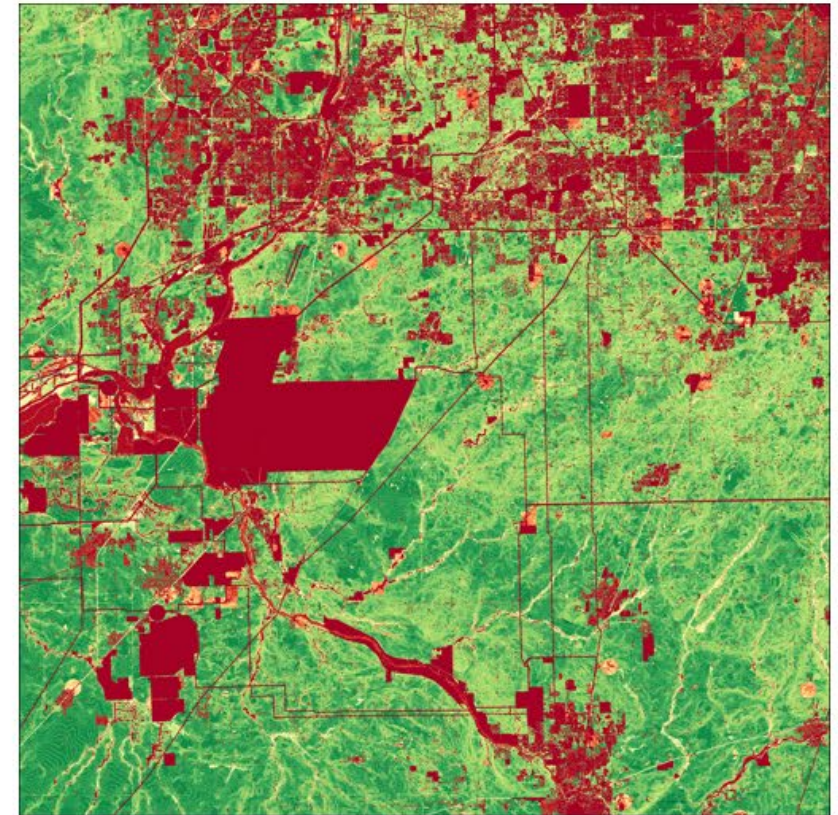
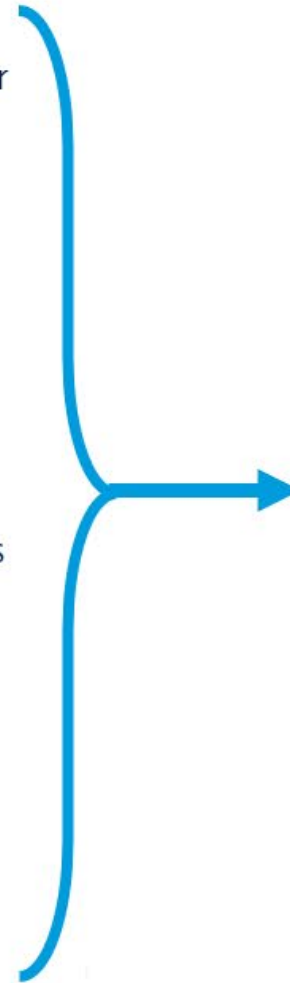


Alternatives Analysis

Review of 10/21/24 Meeting



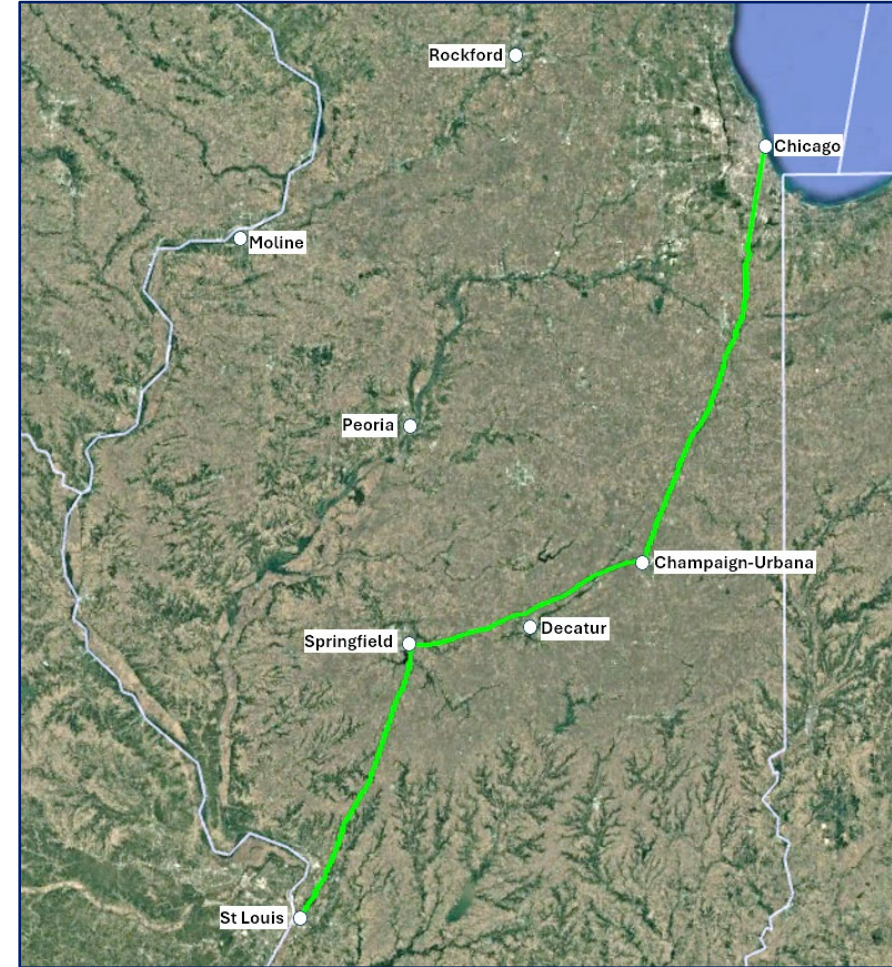
- Reference Layer
- Historic Sites
- Buildings
- Existing Rail
- Utilities
- HAZMAT
- Protected Areas
- Wetlands
- Floodplains
- Farmland
- Elevation



Esri, TomTom, Garmin, SafeGraph, FAO, METI/NASA, USGS, EPA, NPS, USFWS, ILSHPO, EIS, NRCS, BTS, IDOT

Greenfield Route Development

- Developed Least-Cost Paths
 - Algorithm used to identify routes with minimal environmental impacts
- Began drafting feasible rail alignments
 - Using Least-Cost Paths as guides
 - Creates train performance calculation inputs
 - Distances between stations
 - Maximum authorized speeds



Example Greenfield Least-Cost Swath - Overlaid on Google Earth

Highway Right-of-Way High-Speed Rail Alignment Development

- Assessing alignment feasibility
 - Available right-of-way
 - Identifying obstacles
 - Testing mitigation
- Collecting train performance calculation inputs
 - Calculating maximum allowable curve speeds
 - Distances between stations

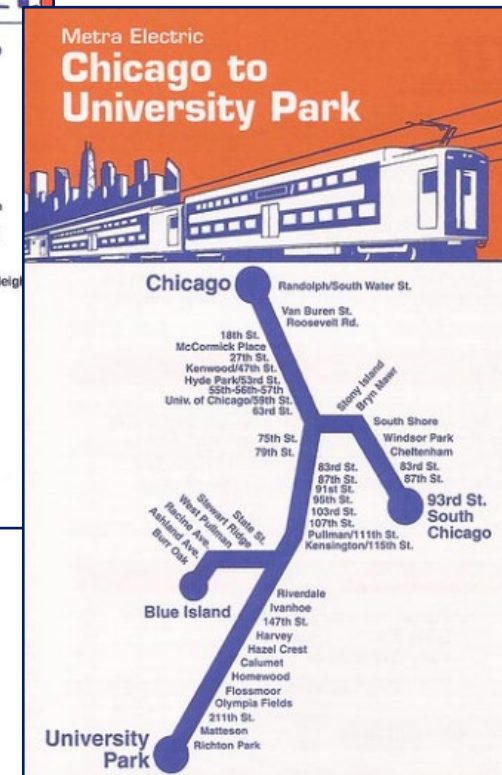
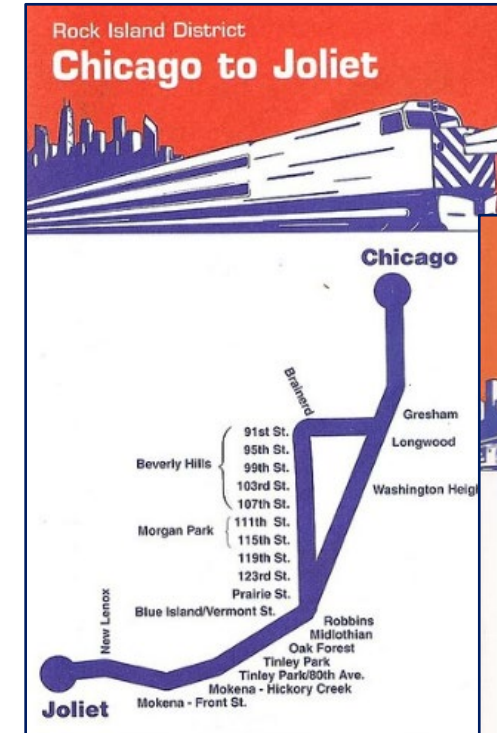


I-55/Staunton Rd Interchange Outside Staunton – Source Google Maps

Alternatives Analysis Update – Chicago Access

• On-Going Metra Coordination

- Access over Metra owned tracks
- Connection to Rockford (IDOT Intercity Service)
- Access to O'Hare Airport
- Rock Island Route
 - Potential connection in Joliet, IL
 - Connection to CUS
 - Southwest Service trains moving to LaSalle St
- Metra Electric Route
 - Potential connection at University Park Station
 - Currently electrified
 - No at grade roadway crossings



Route Analysis Next Steps

- Hold Technical Advisory Committee meetings
- Begin assessing station locations
- Examine feasible service headways
- Draft schedules using train performance calculations
- Estimate travel times to feeder network
- Inform ridership model
- Present newest high-speed rail technology to the public

Market Analysis

Market Analysis

- Developing ridership model with input from public involvement and train performance estimates
- Drafting stated preference survey questionnaire to inform ridership

Outreach & Engagement

Public Involvement TAC

- Members confirmed
 - Chicago Metropolitan Agency for Planning
 - Champaign-Urbana Mass Transit District
 - Trade organization
 - McLean County Regional Planning Commission
 - Secretary of Transportation
 - Illinois State Toll Highway Authority
 - Illinois Commerce Commission
 - Illinois Municipal League

PI TAC - Responsibilities

- Public Survey
 - Review and comment on survey questions
 - Assist in survey completion outreach
 - Identify survey locations
 - Assist with field survey collection
- Stakeholders
 - Share community contacts
- Outreach Events
 - Identify & support events / pop-ups

Progress & Next Steps

- SEP under IDOT review
- Website – NOW LIVE! – www.ILHighSpeedRail.org
- PI TAC - January
- Public Meeting & Survey Release - February

Draft Annual Report

Draft Annual Report

- In development

Thank you!

Commission Legislative Discussion



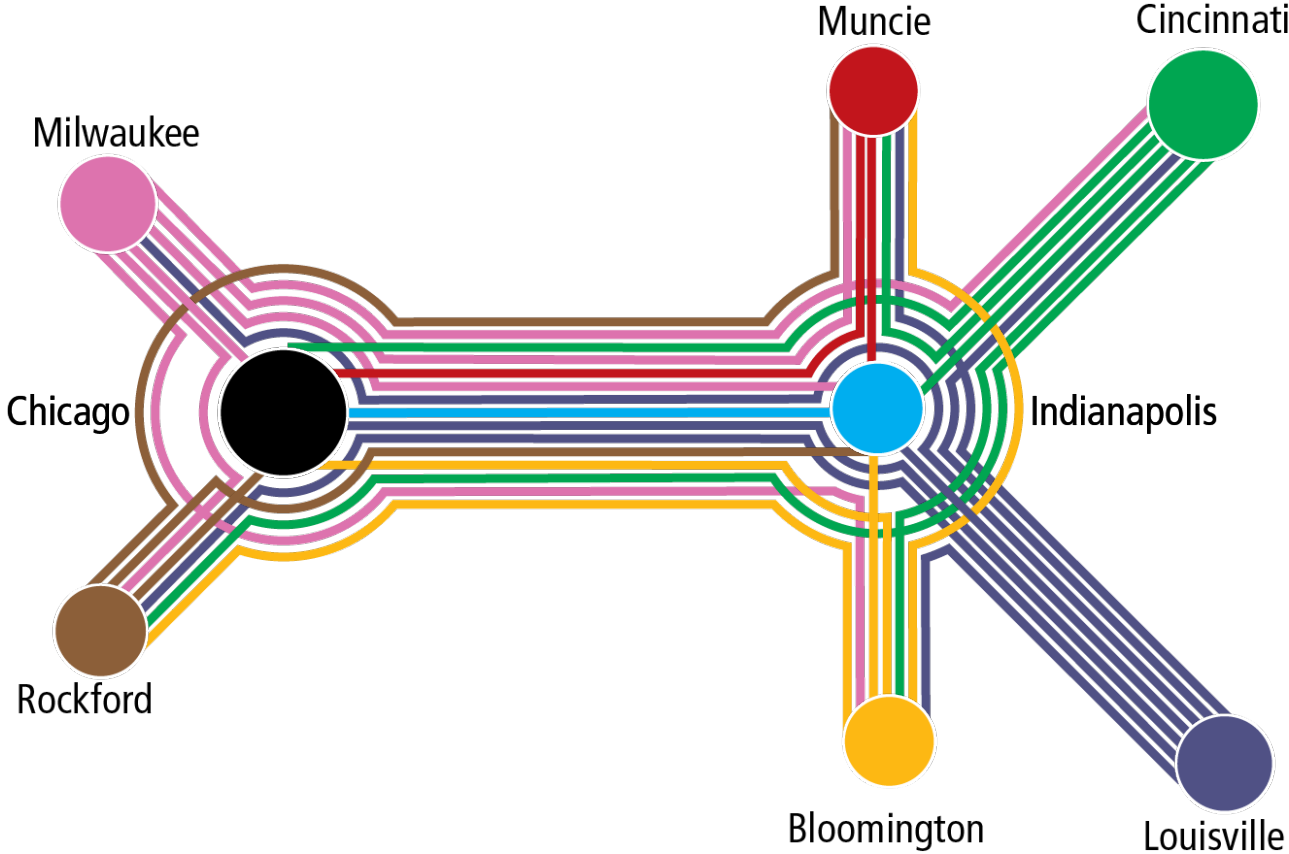
Commission Legislative Discussion

Opened by Chair Derwinski

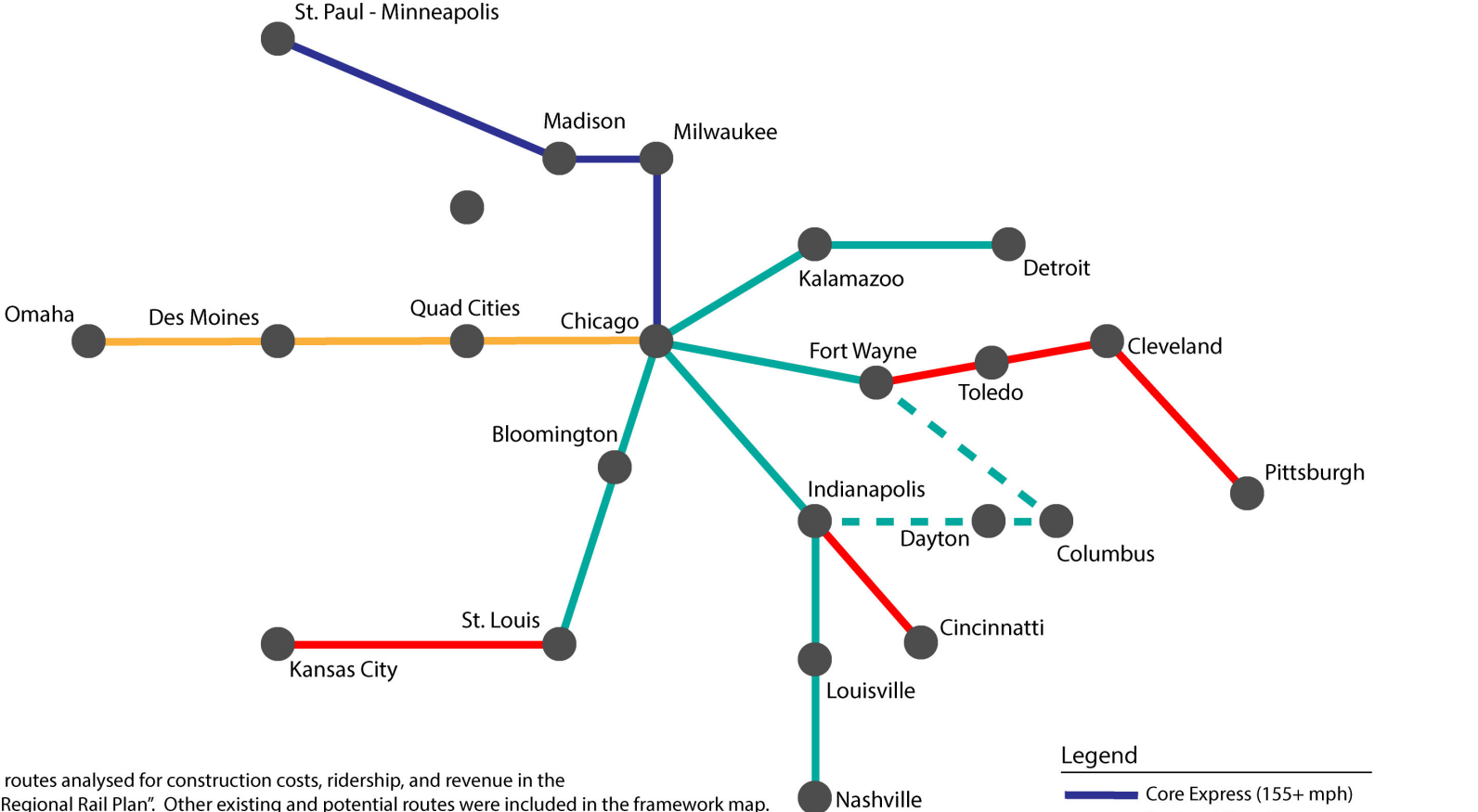
(20 ILCS 4102/10)

Sec. 10. Duties of Commission. The High-Speed Railway Commission shall create a statewide plan for a high-speed rail line and feeder network connecting St. Louis, Missouri and Chicago, Illinois that includes current existing Amtrak and Metra services, connects the cities of Rockford, Moline, Peoria, and Decatur, and uses inter-city bus service to coordinate with the rail line. The Commission shall conduct a ridership study and shall make findings and recommendations concerning a governance structure, the frequency of service, and implementation of the plan. The Commission shall report to the General Assembly and the Governor no later than December 31 of each year.

Network Planning is Critical



Network Analyzed by the Federal Railroad Administration



- Notes:
- 1) These were the routes analysed for construction costs, ridership, and revenue in the 2021 "Midwest Regional Rail Plan". Other existing and potential routes were included in the framework map.
 - 2) Though called a "plan", it should be considered a discussion framework. The FRA did not consider constructability of the proposal routes, nor did they do detailed ridership analysis. They used the Connects" model, which is a tool for testing scenarios, not planning specific routes.
 - 3) The FRA used Acela performance as models parameters for "Regional", which requires electrification and few highway crossings.

Legend

	Core Express (155+ mph)
	Regional/Core Express
	Regional (Two electrified tracks)
	Emerging (Shared-Use)
	Alternative Corridor Alignment Options

FRA Rail Plan Demonstrates the Power of Networks

Table 13. Benefits to Connectivity of Network Compared to Standalone Corridors¹

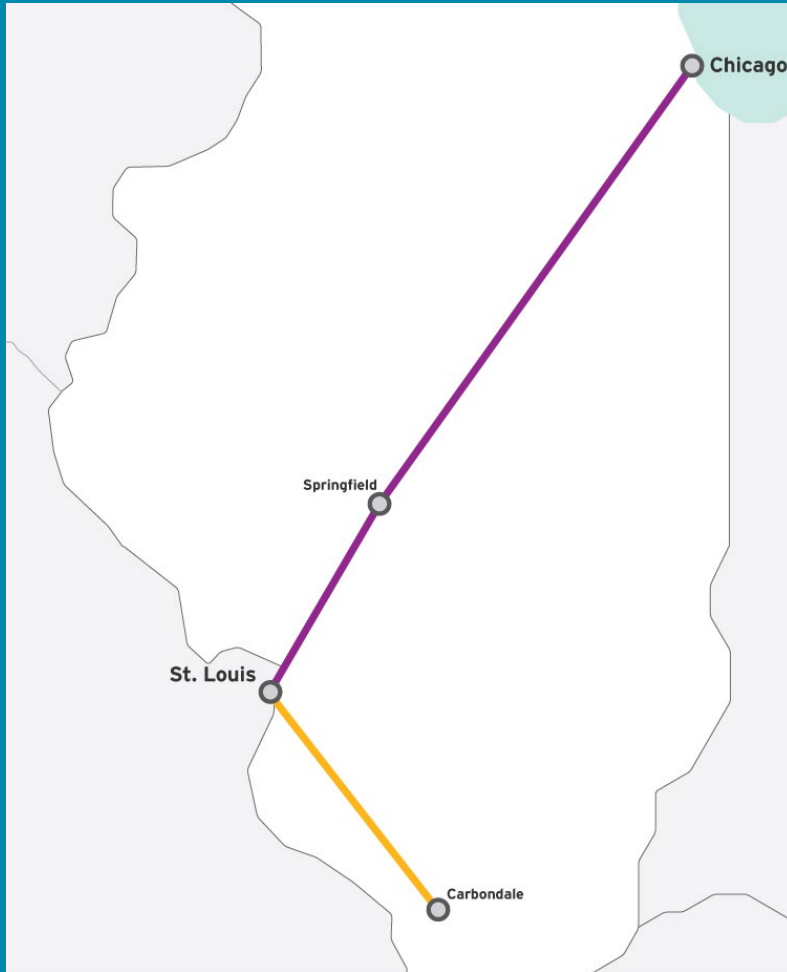
	MARKETS SERVED ²	INTERCITY RIDERSHIP ³	REVENUE	O&M COST	CAPITAL COST
Sum of Standalone	189	12 M	\$0.9 B	\$1.6 B	\$120 B
Network	1,088	17 M	\$1.5 B	\$1.5 B	\$116 B
Percentage Difference	476%	41%	59%	-2.5%	-3.3%

¹ Performance outputs for the primarily Regional version of the network

² Total number of market pairs on network with maximum of one transfer

³ Year 2055 intercity demand

Carbondale is just one example of how HSR will benefit offline cities.



Carbondale - Chicago				<u>Total</u>
Amtrak				5:30
Auto				4:50 - 6:00
Amtrak + HSR	1:00	0:15	2:00	3:15
Carbondale - Springfield				
Bus + Amtrak	1:00	1:35	1:55	5:30
Auto				2:40 - 3:20
Bus + HSR	1:00	0:15	0:30	2:45

County-to-County Ridership Demand

California State integrated plan drives huge boost in usage

Note: Fresno is a busy station by current standards but doesn't show up at this scale

2010 Existing

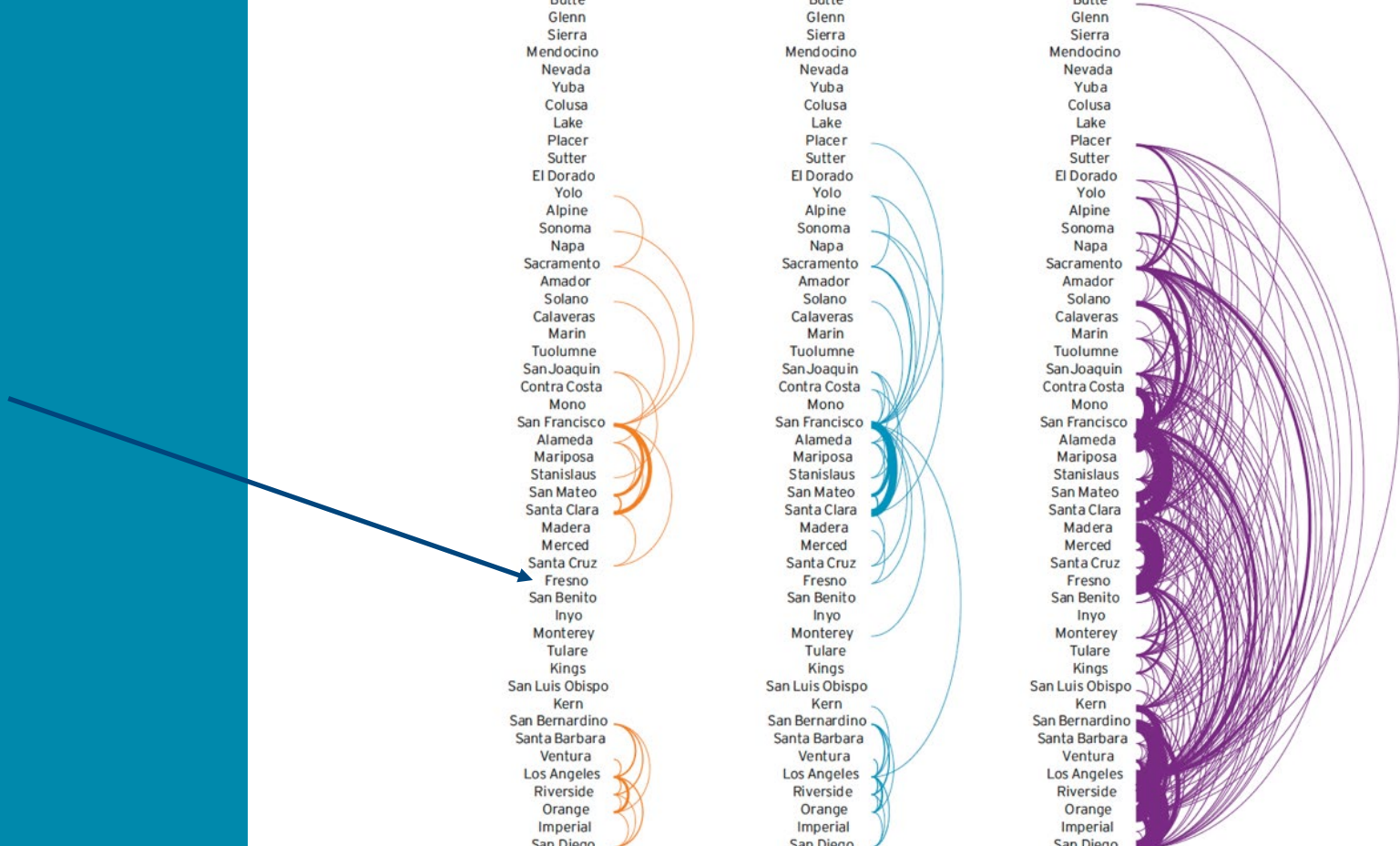
- Del Norte
- Modoc
- Siskiyou
- Shasta
- Lassen
- Humboldt
- Trinity
- Tehama
- Plumas
- Butte
- Glenn
- Sierra
- Mendocino
- Nevada
- Yuba
- Colusa
- Lake
- Placer
- Sutter
- El Dorado
- Yolo
- Alpine
- Sonoma
- Napa
- Sacramento
- Amador
- Solano
- Calaveras
- Marin
- Tuolumne
- San Joaquin
- Contra Costa
- Mono
- San Francisco
- Alameda
- Mariposa
- Stanislaus
- San Mateo
- Santa Clara
- Madera
- Merced
- Santa Cruz
- Fresno
- San Benito
- Inyo
- Monterey
- Tulare
- Kings
- San Luis Obispo
- Kern
- San Bernardino
- Santa Barbara
- Ventura
- Los Angeles
- Riverside
- Orange
- Imperial
- San Diego

2040 Stand-Alone Projects

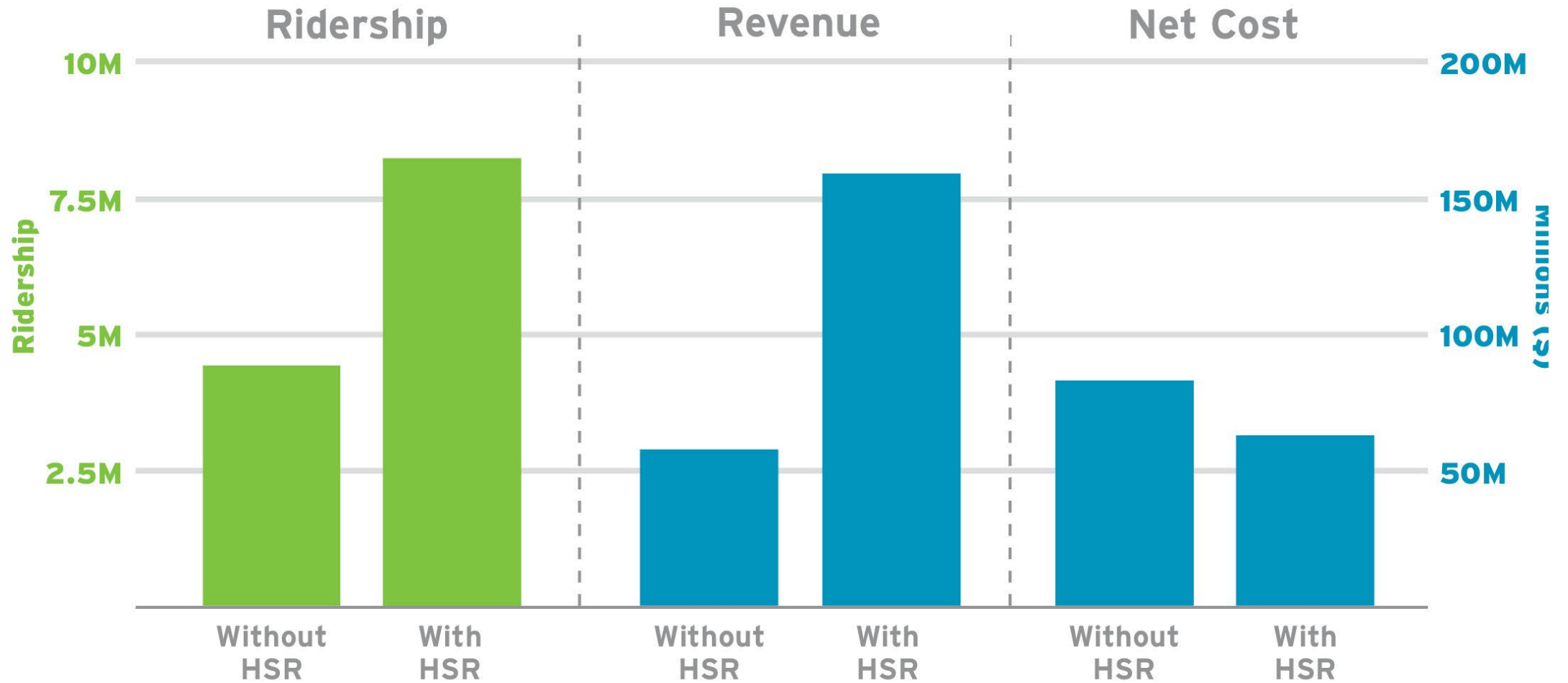
- Del Norte
- Modoc
- Siskiyou
- Shasta
- Lassen
- Humboldt
- Trinity
- Tehama
- Plumas
- Butte
- Glenn
- Sierra
- Mendocino
- Nevada
- Yuba
- Colusa
- Lake
- Placer
- Sutter
- El Dorado
- Yolo
- Alpine
- Sonoma
- Napa
- Sacramento
- Amador
- Solano
- Calaveras
- Marin
- Tuolumne
- San Joaquin
- Contra Costa
- Mono
- San Francisco
- Alameda
- Mariposa
- Stanislaus
- San Mateo
- Santa Clara
- Madera
- Merced
- Santa Cruz
- Fresno
- San Benito
- Inyo
- Monterey
- Tulare
- Kings
- San Luis Obispo
- Kern
- San Bernardino
- Santa Barbara
- Ventura
- Los Angeles
- Riverside
- Orange
- Imperial
- San Diego

2040 Coordinated Network

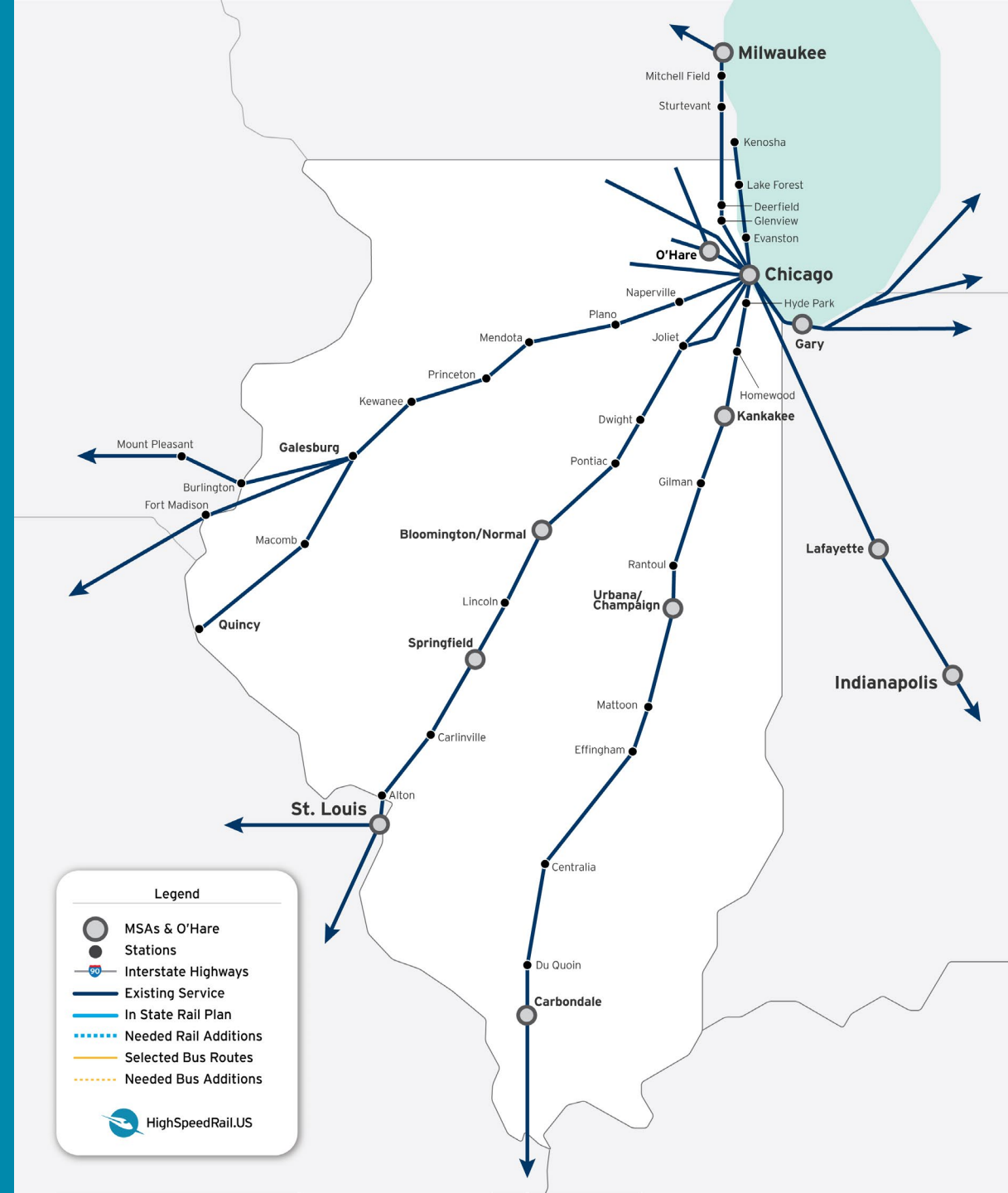
- Del Norte
- Modoc
- Siskiyou
- Shasta
- Lassen
- Humboldt
- Trinity
- Tehama
- Plumas
- Butte
- Glenn
- Sierra
- Mendocino
- Nevada
- Yuba
- Colusa
- Lake
- Placer
- Sutter
- El Dorado
- Yolo
- Alpine
- Sonoma
- Napa
- Sacramento
- Amador
- Solano
- Calaveras
- Marin
- Tuolumne
- San Joaquin
- Contra Costa
- Mono
- San Francisco
- Alameda
- Mariposa
- Stanislaus
- San Mateo
- Santa Clara
- Madera
- Merced
- Santa Cruz
- Fresno
- San Benito
- Inyo
- Monterey
- Tulare
- Kings
- San Luis Obispo
- Kern
- San Bernardino
- Santa Barbara
- Ventura
- Los Angeles
- Riverside
- Orange
- Imperial
- San Diego



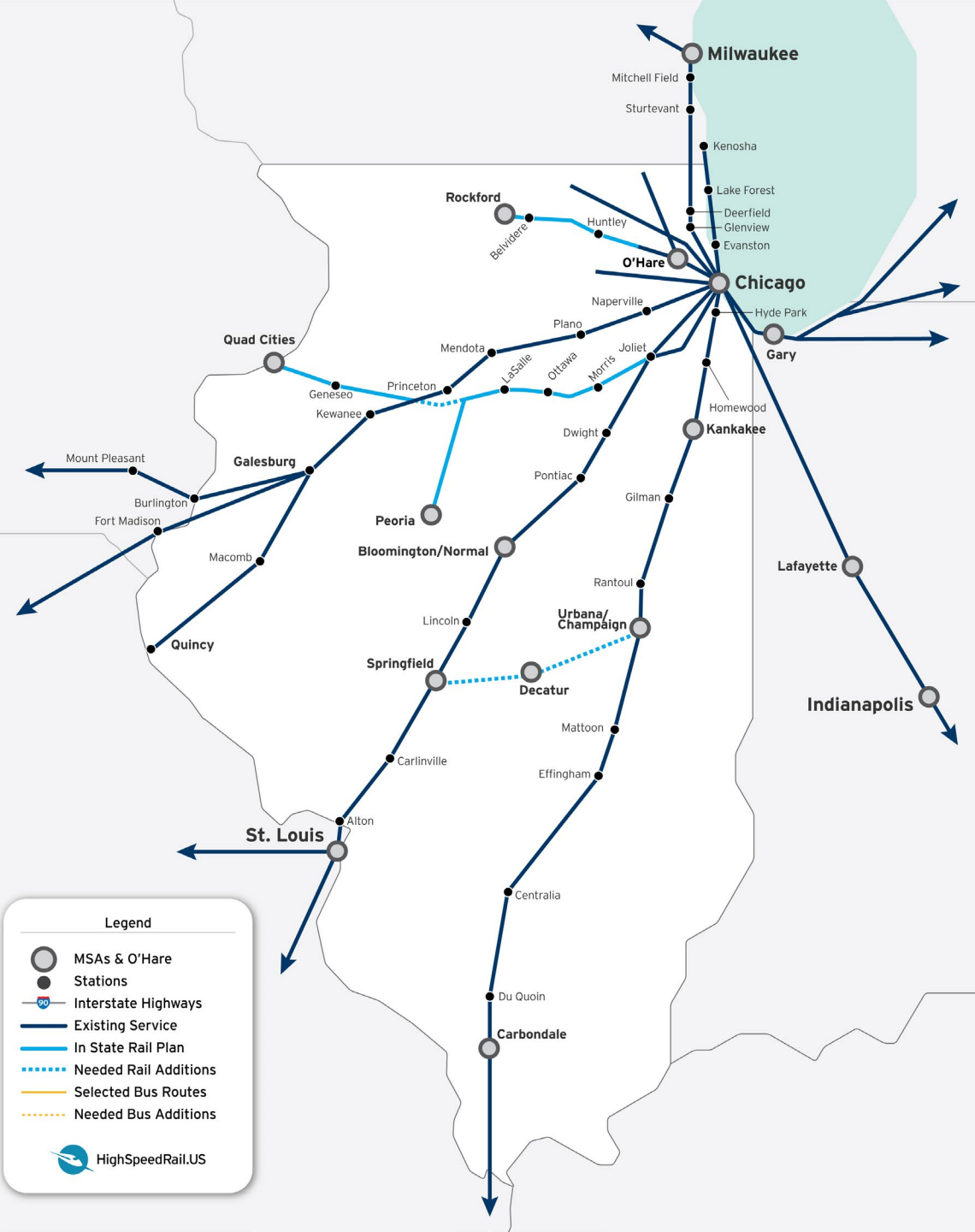
Improvements to San Joaquin and connecting routes with Central Valley High-Speed Line



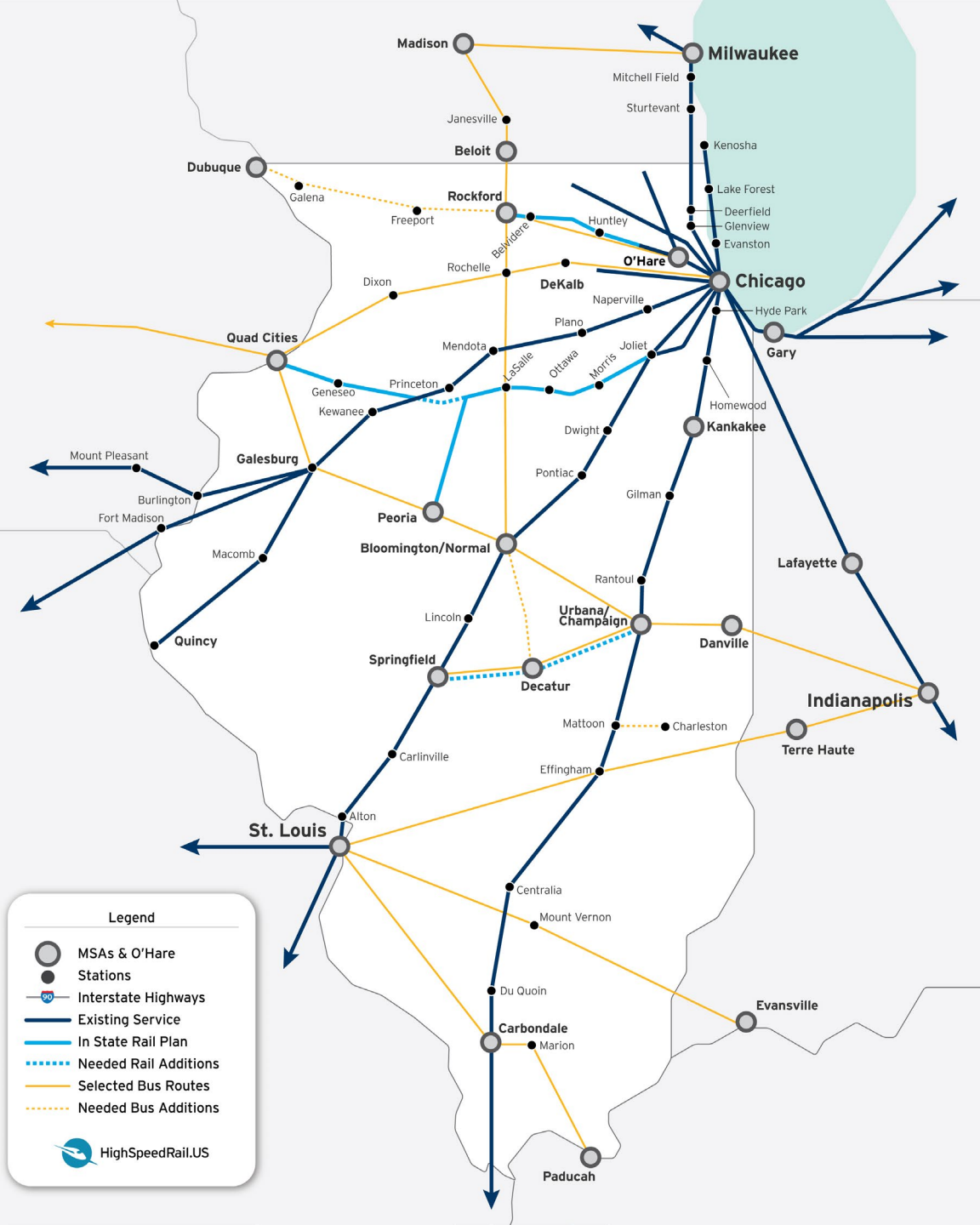
“includes current existing Amtrak and Metra services,”



“connects the cities of Rockford, Moline, Peoria, and Decatur,”



“uses inter-city bus service to coordinate with the rail line.”



Review & Vote on Draft 2025 Commission Schedule



Review & Vote on Draft 2025 Commission Meeting Schedule

Led by Chair Derwinski

Review & Vote on Draft 2025 Commission Schedule



Proposed Commission Meeting Dates

Wednesday, January 15th, 10:30am-12:30pm

Monday, February 10th, 10:30am-12:30pm

Monday, March 10th, 10:30am-12:30pm

Monday, April 14th, 10:30am-12:30pm

Monday, May 19th, 10:30am-12:30pm

Wednesday, June 11th, 10:30am-12:30pm

Monday, July 14th, 10:30am-12:30pm

Monday, August 18th, 10:30am-12:30pm

Wednesday, September 10th, 10:30am-12:30pm

Wednesday, October 1st, 10:30am-12:30pm

Wednesday, November 19th, 10:30am-12:30pm

Wednesday, December 10th, 10:30am-12:30pm

Public Comment



**We will now open the floor
for public comment.**



**ILLINOIS
HIGH-SPEED RAIL**
COMMISSION



Illinois Department
of Transportation

www.idothesr.org

Adjournment

Jim Derwinski, Chair, HSR Commission

 JDerwinski@metrarr.com

Tim Butler, Vice Chair, HSR Commission

 Tim@ilrail.org

High-Speed Rail Commission Email

 DOT.HighSpeedRailwayCommission@illinois.gov