

Strengthening our State. Connecting the Region.

Illinois High-Speed Rail Commission Meeting

Monday, October 21, 2024



Agenda

- Project Timeline
- Alternatives Analysis
- Market Analysis
- Outreach & Engagement
- Technical Advisory Committee
- Draft Annual Report

Project Timeline

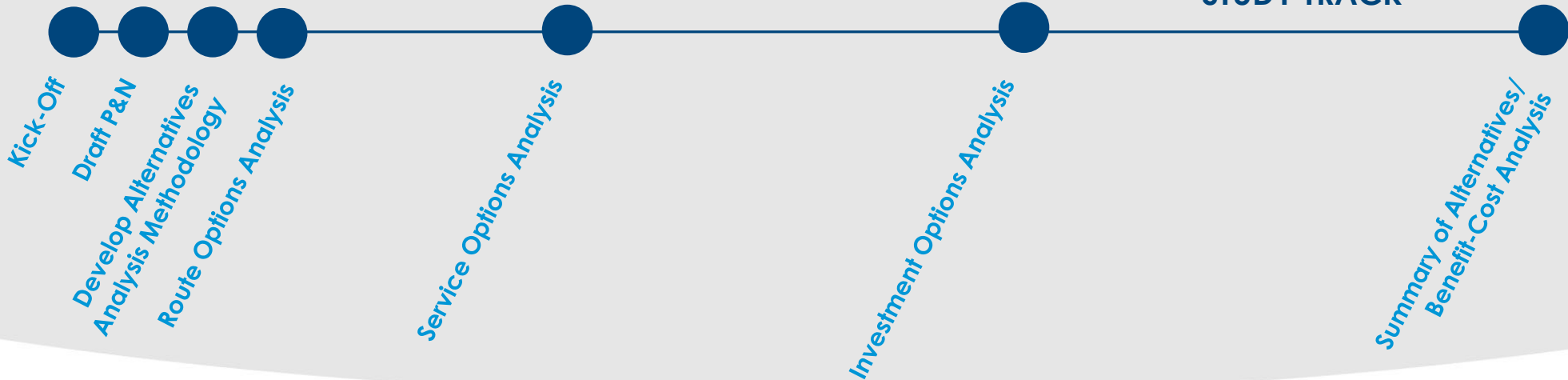


Strengthening our State. Connecting the Region.

**WE ARE
HERE!**



PROGRAM MANAGEMENT ACTIVITIES + ENGAGEMENT + GOVERNANCE



Alternatives Analysis

Review of 9/23/24 Meeting

- Developing route alignments within highway medians
- Consideration of environmental constraints

Alternatives Analysis Update

Route Options

- Meet goals and objectives
- Consistent with planning documents
- Physical constraints
- Environmental screening
- Existing market demand
- Travel time

Service Options

- Service planning with refined travel time
- Stations analysis
- Fleet requirements and equipment + crew utilization
- Ridership/revenue

Investment Options

- Capital investments
- Capital cost estimates
- O&M cost estimates

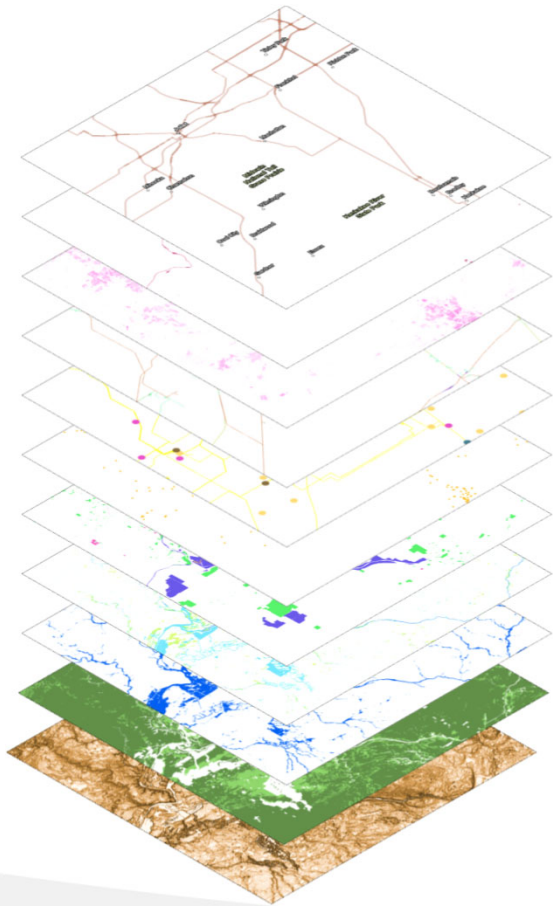
Summary of
Alternatives
Matrix

Alternatives Analysis Update – Highway Median

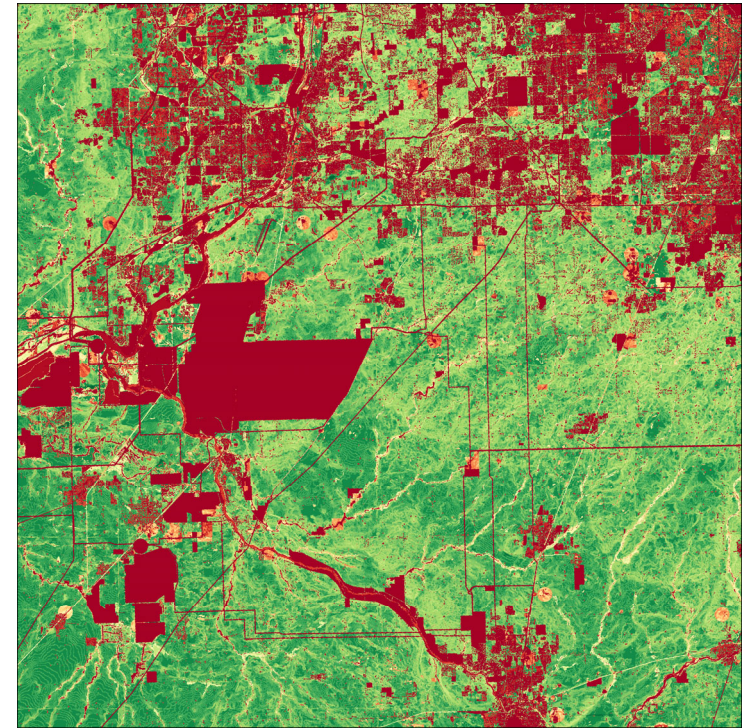
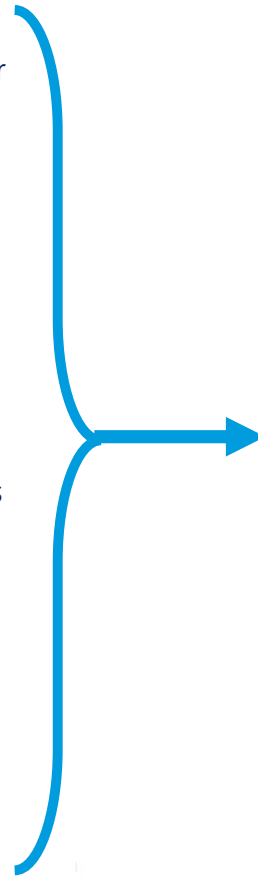
- Continuing highway median alignment design
- Constructability review



Alternatives Analysis Update - Greenfield



- Reference Layer
- Historic Sites
- Buildings
- Existing Rail
- Utilities
- HAZMAT
- Protected Areas
- Wetlands
- Floodplains
- Farmland
- Elevation



Esri, TomTom, Garmin, SafeGraph, FAO, METI/NASA, USGS, EPA, NPS, USFWS, ILSHPO, EIS, NRCS, BTS, IDOT

Alternatives Analysis Update – Train Performance Calculations

- Initial TPC for several segments completed
- Iterative process to calculate and refine travel times
- Will help identify areas with speed limiting curves for next phase of route and analysis and service options analysis

Market Analysis

Review of 9/23/24 Meeting

- Discussed data that would be used for initial market analysis
- Looked at map showing volume of trips from Cook County to other counties along the HSR spine
- Presented initial data on purpose of trips



Methodology to forecast High Speed Rail Ridership

1

Establish total demand
between city pairs

Existing trips by mode in the
corridor

Potential for growth

2

Estimate high-speed rail's
market share

Preferences of current travelers
(IL HSR survey)

3

Estimate high-speed rail
demand

Customized forecasting tool for IL
HSR

-> Annual revenue and ridership
by station pair

Corridor Analysis Process

1

County to County Market Demand Analysis

Long Distance Demand

Intermediate Demand

City Pair Demand Analysis

Buffer City Pairs

Remove Short Distance Demand

Future Demand Analysis

Illinois Statewide Model

Corridor Ranking by Demand Potential

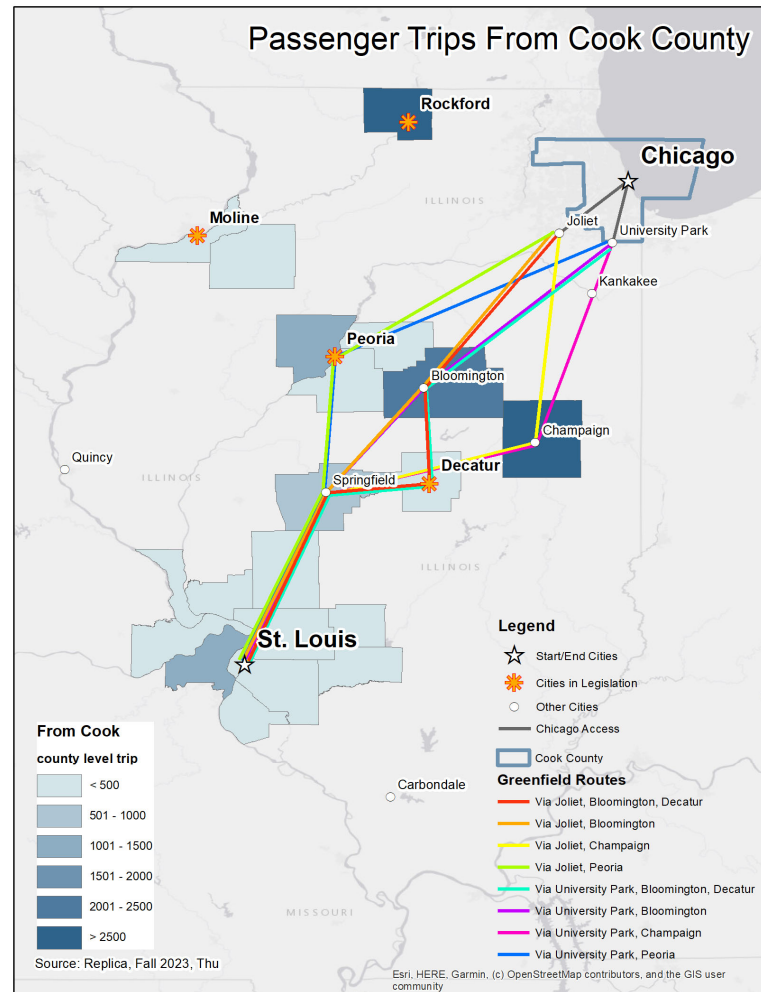
Initial Market Analysis

- Objective: Identify intermediary cities with the greatest potential demand for route selection
- Method:
 - County to County passenger trips
 - To/from Cook County to counties with/near potential stations
 - Between Cook County and every other county in IL
 - City to City passenger trips
- Sources:
 - Replica data - Average Thursday in Fall of 2023
 - Illinois statewide model

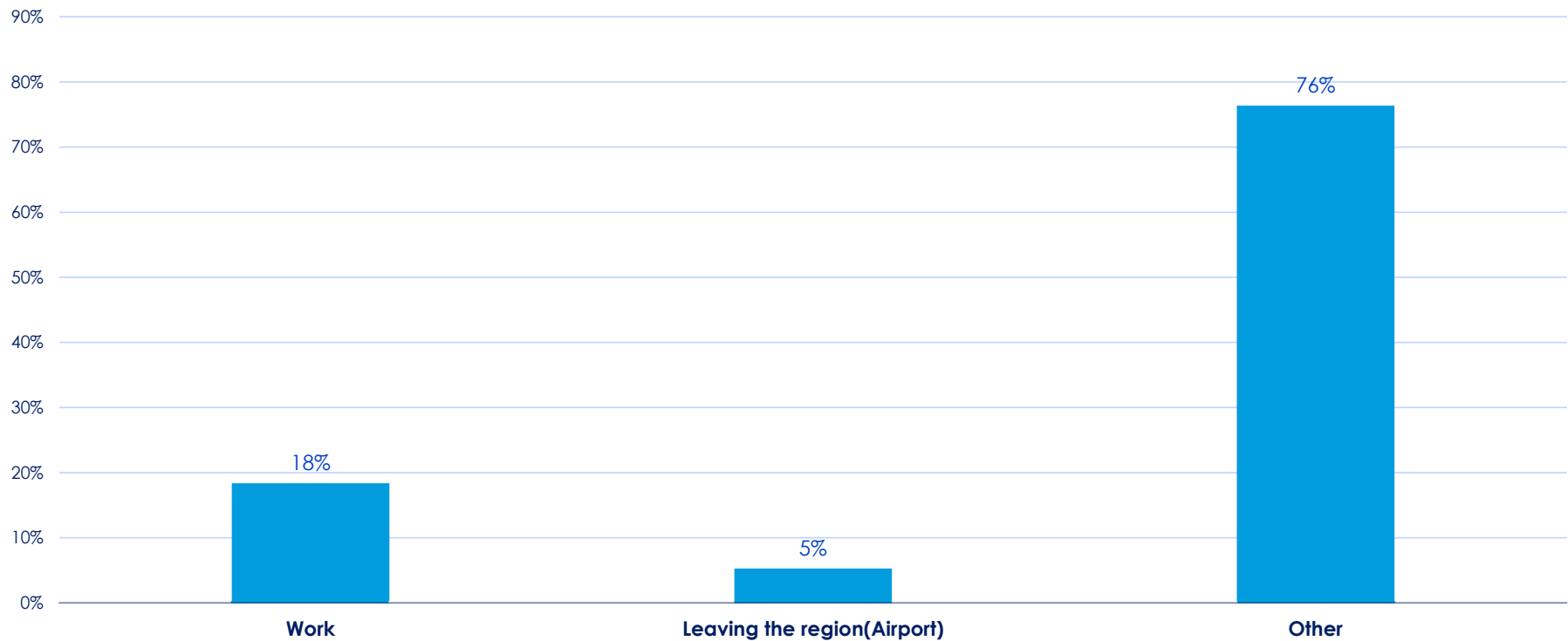
Estimate of demand from Cook County, IL to selected counties

Avg Thu in Fall 2023

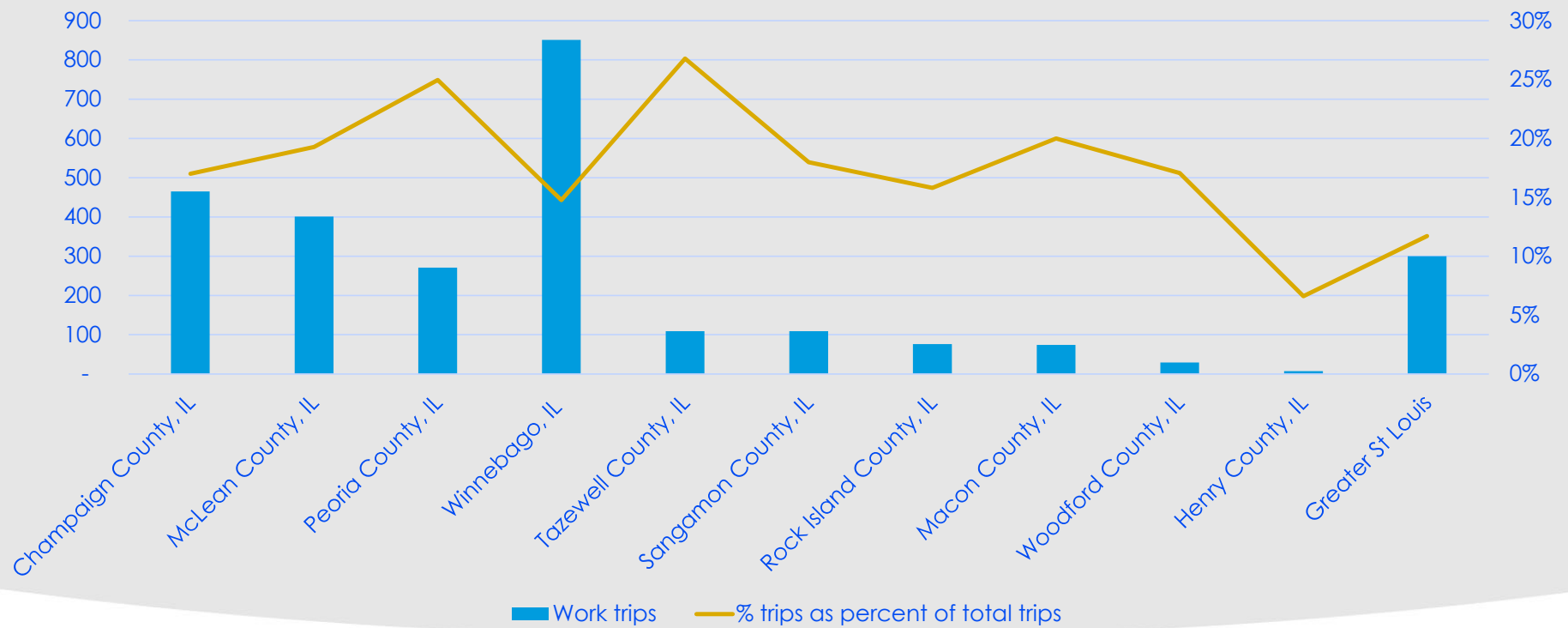
Source: Replica



Purpose of Trips from Cook County from Selected Counties



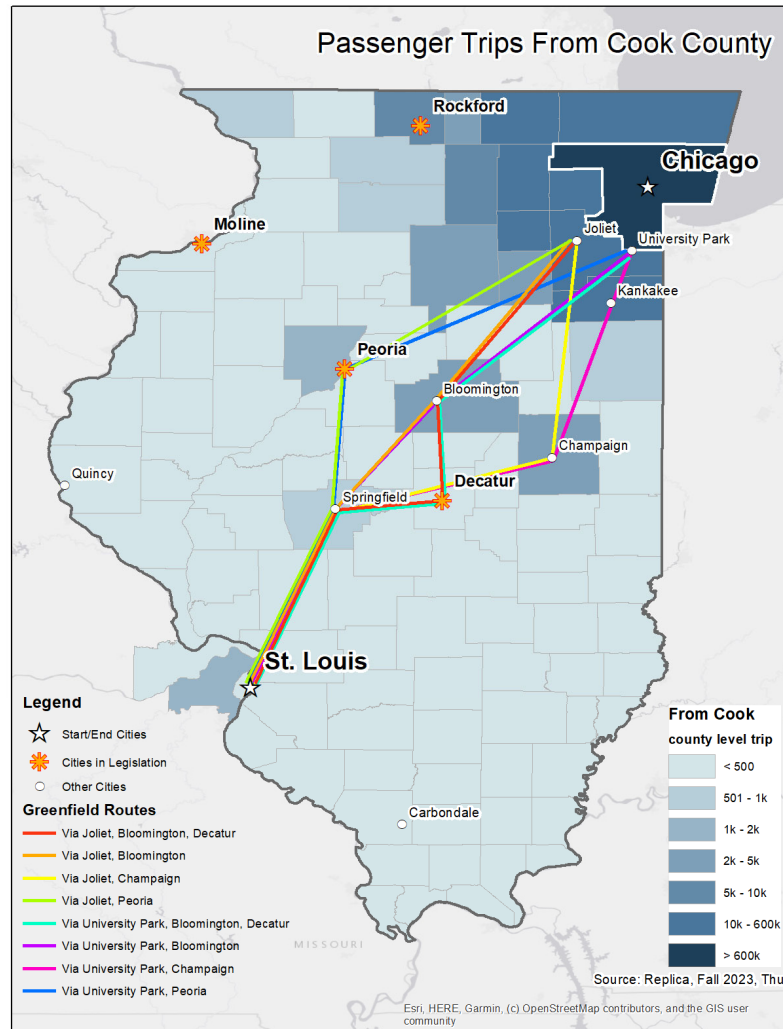
Work Trips from Cook County from Selected Counties

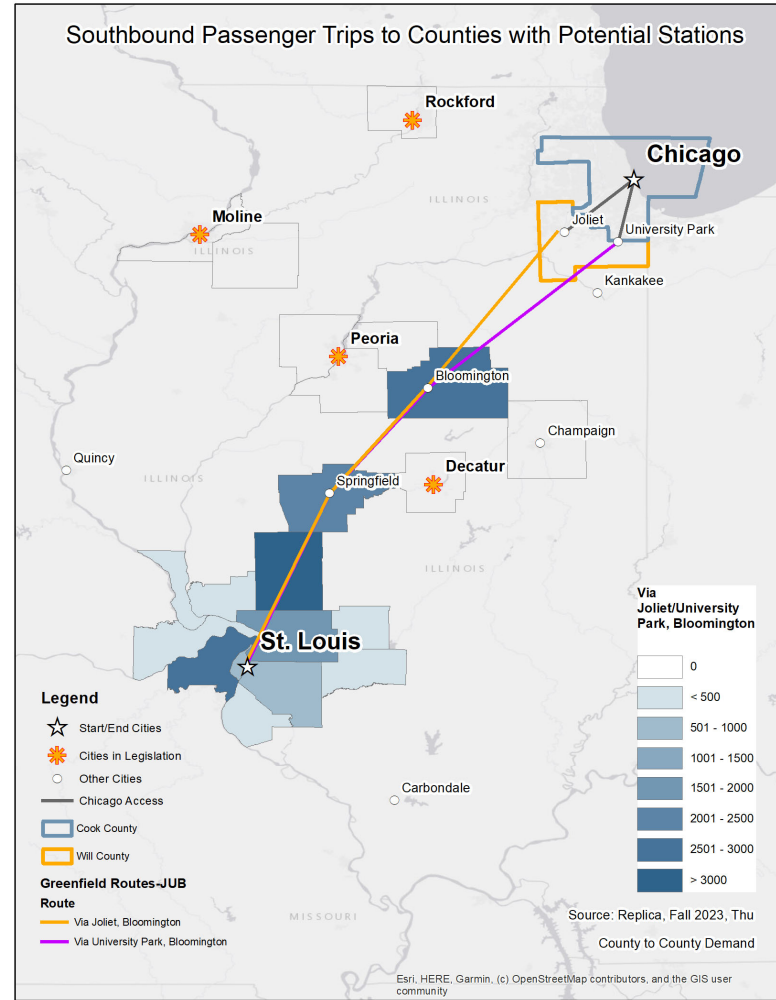
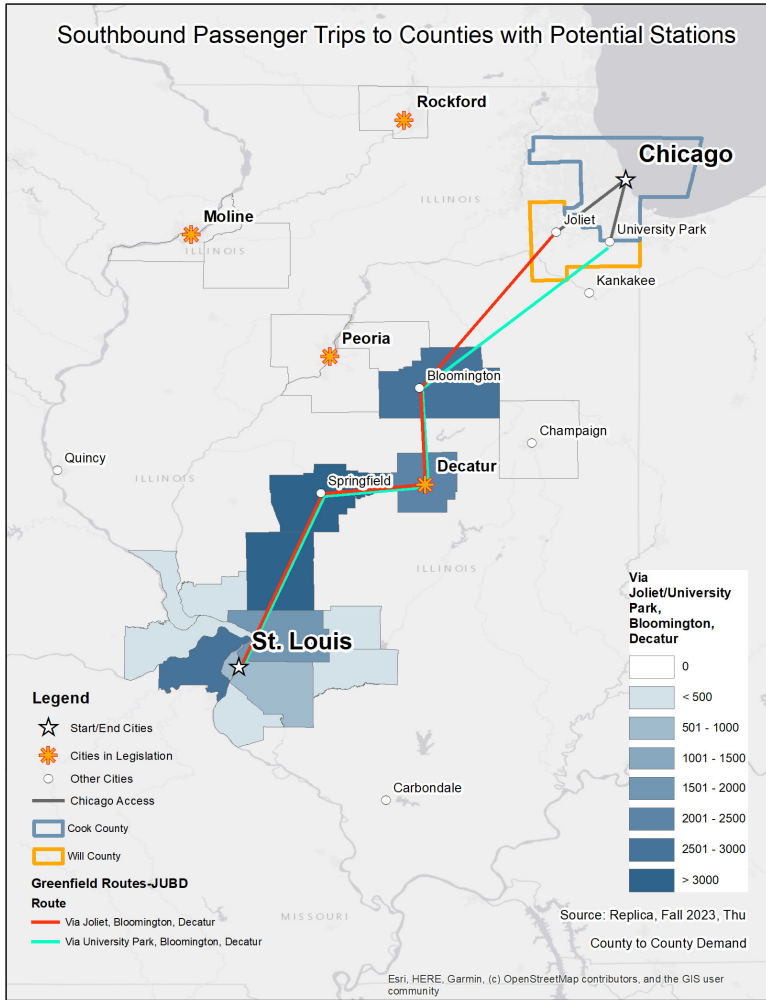


Estimate of demand from Cook County, IL to **all** counties in IL + 3 MO counties.

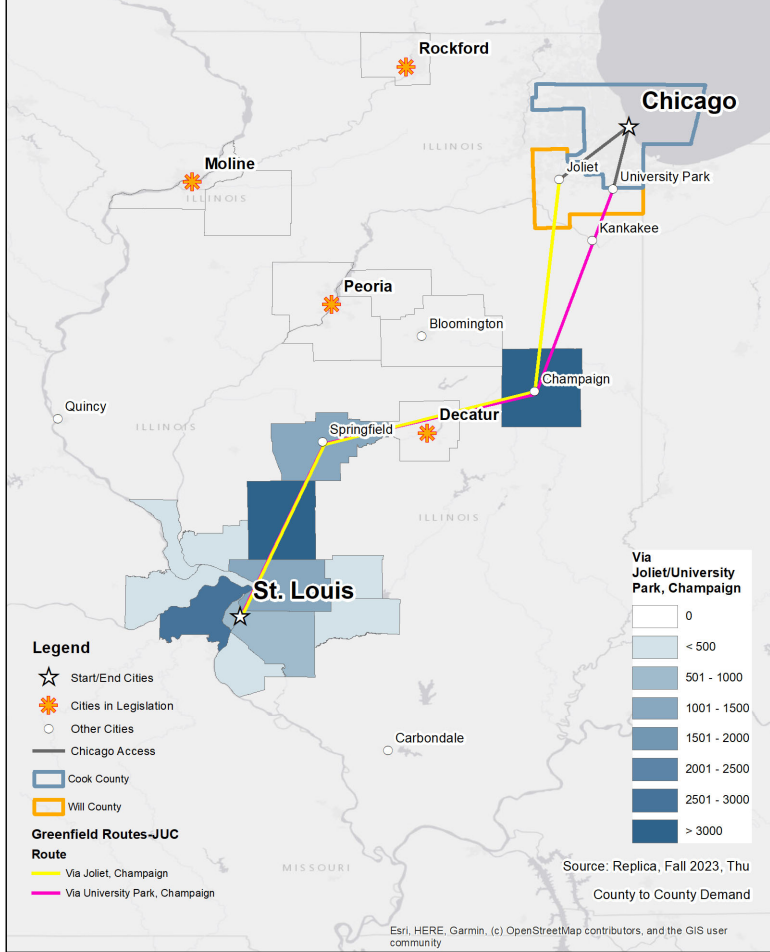
Avg Thu in Fall 2023

Source: Replica

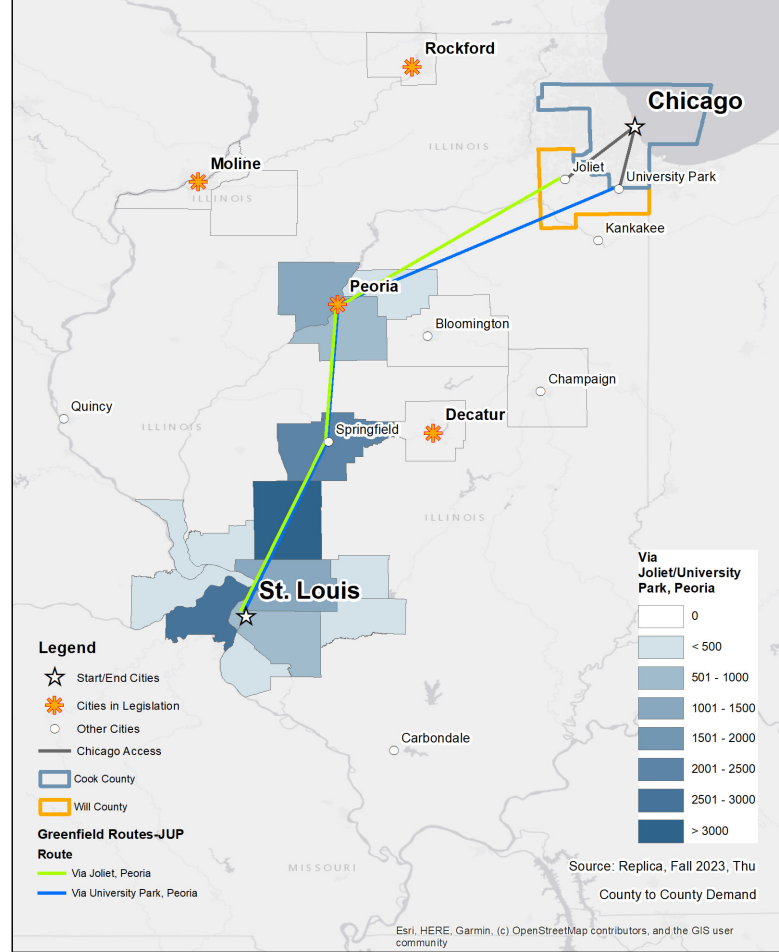




Southbound Passenger Trips to Counties with Potential Stations



Southbound Passenger Trips to Counties with Potential Stations



Next Steps for Market Demand

- Market Analysis
 - City pair analysis using buffers
 - Review statewide travel demand model and compare to initial market analysis results
 - Understand growth patterns in Illinois

Outreach & Engagement

Review of 9/23/24 Meeting

- Continuing to develop study website
- Prepared draft Stakeholder Engagement Plan that is under review



Strengthening our State. Connecting the Region.

Public Involvement TAC

- Identifying members
- Representation from around the state
- Outreach experience
- Sending letters of invitation
- Anticipate 3-4 meetings (November, December, March, April)

PI TAC - Responsibilities

- Public Survey
 - Review and comment on survey questions
 - Assist in survey completion outreach
 - Identify survey locations
- Stakeholders
 - Identify communities /contacts
- Outreach Events
 - Identify & support events
 - Identify & support pop-ups

Progress & Next Steps

- Stakeholder list – please share your contacts
- SEP under IDOT review
- Website – under IDOT review
- Public Meeting & survey release - January

Technical Advisory Committee

Review of 9/23/24 Meeting

- Presented initial TAC purpose, members, and structure
- Discussed future TACs

Project Delivery TAC



Working to identify the IDOT Highways personnel to be involved in the TAC



Developing the outline for the first TAC workshop to occur in the next 3 months

Draft Annual Report



Strengthening our State. Connecting the Region.

Draft Annual Report

- Will begin draft of 2024 Annual Report in November

Thank you!