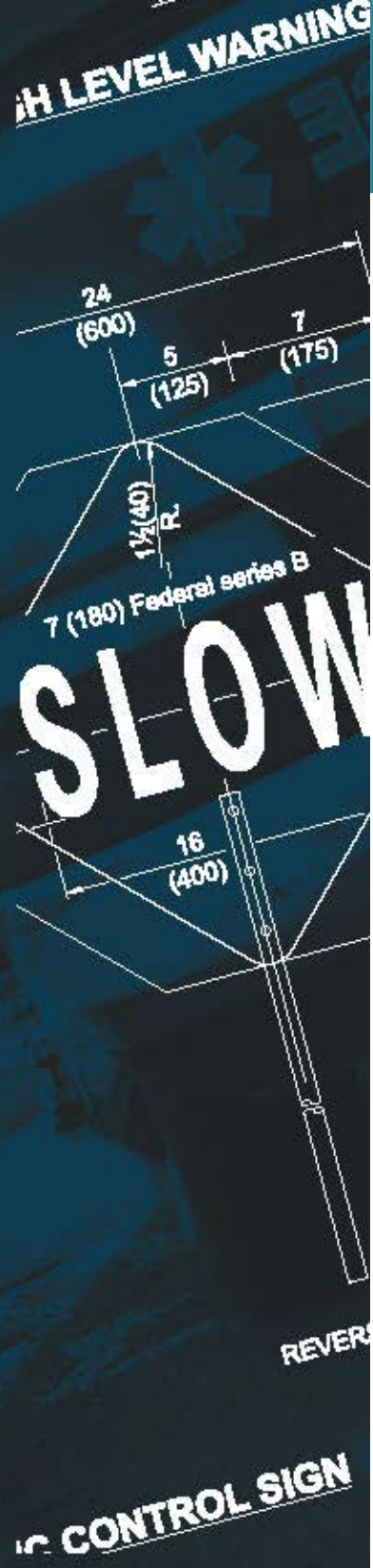




2024 ILLINOIS CRASH FACTS & STATISTICS



Illinois Department
of Transportation



2024 Illinois Crash Facts & Statistics

The Illinois Department of Transportation's Office of Planning and Programming, Bureau of Data Collection, extends its appreciation to local, county and state law enforcement agencies for their assistance in investigating and reporting traffic crashes and to county coroners and the medical examiner of Cook County for providing pertinent information. Without their efforts and cooperation, this publication would not have been possible.

Compiled by: Illinois Department of Transportation
Office of Planning and
Programming Bureau of Data
Collection
Crash Information Staff
Crash Records Staff

Published: January 1, 2026

Table of Contents

Key Terms	5
Crash Data Overview	7
Illinois' Highway Safety Clock	8
Crashes by Day of Week and Time of Day	9
Fatal Crashes by Day of Week and Time of Day	10
A-Injury Crashes by Day of Week and Time of Day	11
Crashes by Type of Road	12
Crashes by Type of Collision	14
Work Zone Crashes	15
Large Trucks Involved in Work Zone Crashes by Crash Severity	16
Fatal Work Zone Crashes by Time of Day and Day of Week	16
Deer Crashes	17
Pedestrian and Pedalcycle Crashes	18
Train Crashes	19
County Motor Vehicle Crash Statistics	20
Person Data Overview	23
Illinois Fatalities and Vehicle Miles Traveled 2005-2024	24
Drivers Involved in Crashes by Age and Crash Severity	25
Drivers Involved in Fatal Crashes by Age and Location	26

2024 Illinois Crash Facts & Statistics

Table of Contents

Injuries by Person Type, Age and Gender	27
A-Injuries by Person Type, Age and Gender	28
Fatalities by Person Type, Age and Gender	29
Teen (16-19 Years Old) Fatalities by Age and Person Type	30
Pedestrian	31
Pedalcyclist	32
Motorcyclist	33
Occupant Restraint Usage for People Killed and Injured	34
Alcohol-Related Fatal Crashes Data Overview	36
Drivers Killed by Age and BAC	37
Fatal Alcohol-Related Crashes by Time of Day and Day of Week	37
Fatal Crashes During the Holidays	38
Pedestrians and Pedalcyclists Killed by Age and BAC	39
Vehicle Data Overview	41
Registered Motor Vehicles by Type	42
Motor Vehicles Involved in Crashes	42
Tractor-Trailer Crashes	43
School Bus Crashes	44
Motorcycle Crashes	45

Key Terms

BLOOD ALCOHOL CONCENTRATION (BAC)

On July 2, 1997, a BAC of 0.08 or greater became the level at which a driver is considered legally intoxicated in Illinois. Prior to July 2, 1997, the level was 0.10.

CRASH

An occurrence that takes place on public roadways, involves a moving motor vehicle and produces death, injury or damage in excess of \$1,500 to any one person's property when all drivers in the crash are insured. If any driver does not have insurance, the threshold is \$500. (The change in threshold took effect on Jan. 1, 2009.)

DRIVER

An occupant who is in actual physical control of a motor vehicle or, for an out-of-control vehicle, an occupant who was in control until control was lost. When the term driver is used, it includes drivers of all types of motor vehicles, including cars, vans, pickup trucks, motorcycles, tractor-trailers, emergency vehicles and buses.

FATALITY VS. FATAL CRASH

A fatality is a death that results from a traffic crash. A fatal crash is a motor vehicle crash (single or multiple) that results in the death of one or more people.

INJURY CRASH

Any motor vehicle crash that results in one or more non-fatal injuries.

A-INJURY (incapacitating injury)

Any injury, other than a fatal injury, that prevents the injured person from walking, driving or normally continuing the activities he/she was capable of performing before the injury occurred. Includes severe lacerations, broken limbs, skull or chest injuries, and abdominal injuries.

B-INJURY (non-incapacitating injury)

Any injury, other than a fatal or incapacitating injury, that is evident to observers at the scene of the crash. Includes a lump on the head, abrasions, bruises and minor lacerations.

C-INJURY (possible injury)

Any injury reported or claimed that is not either an "A," "B" or fatal injury. Includes momentary unconsciousness, claims of injuries not evident, limping, complaints of pain, nausea and hysteria.

LOCATION (URBAN)

Includes location in or adjacent to a municipality or other urban area with a population greater than 5,000.

LOCATION (RURAL)

Includes all locations not classified as urban.

MILEAGE DEATH RATE

Fatalities per 100 million vehicle miles of travel.

MOTORCYCLIST

Any occupant, either operator (driver) or passenger, of a motorcycle.

PEDALCYCLIST

Any occupant of a non-motorized vehicle that is propelled by pedaling. Includes bicycles, unicycles and tricycles.

PEDESTRIAN

Any person who is not in or on a vehicle.

TRACTOR-TRAILER

Alternative term for semi-truck.

TRAVEL

Vehicle miles driven.

WORK ZONE CRASHES

A motor vehicle traffic crash in which the first harmful event occurs within the boundaries of a work zone or an approach to or exit from a work zone, resulting from an activity, behavior or control related to the movement of the traffic units through the work zone. (For a full definition of a work zone, see page 15.)

Crash Data

The motor vehicle crash data referenced in this section reflect crashes. The data do not reflect people involved in these crashes, unless otherwise specified.

Crash Data Overview

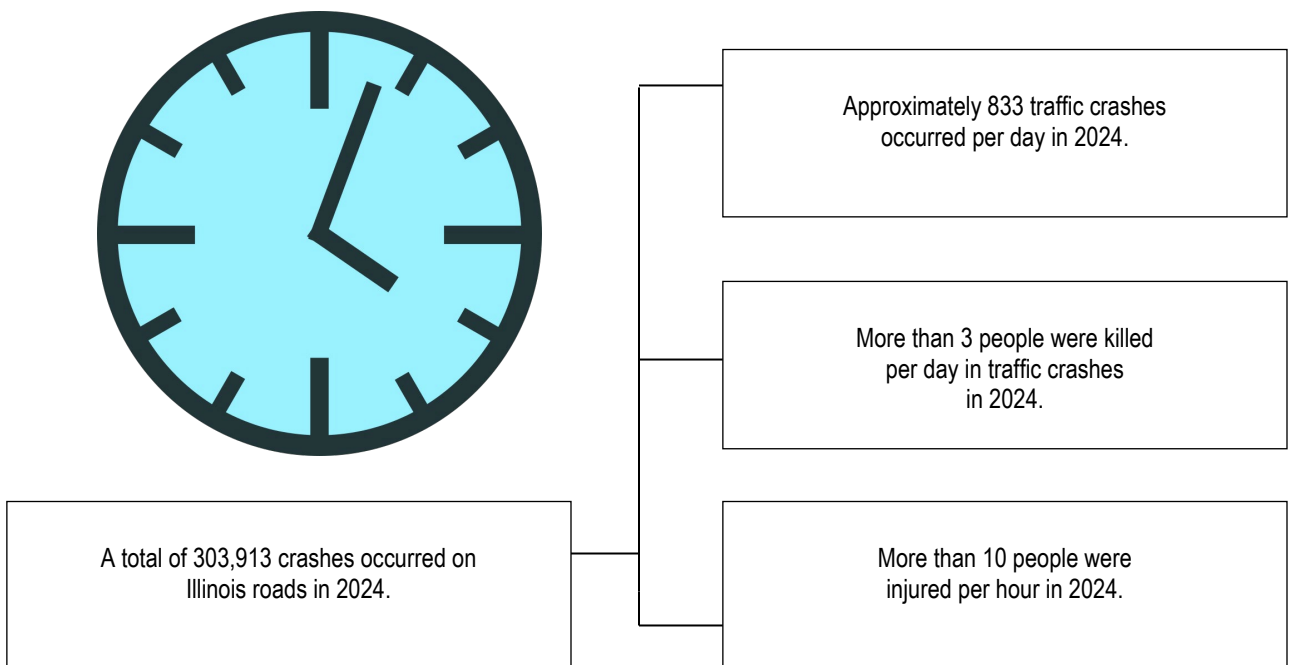
- ✦ In 2024, there were 303,913 crashes involving motor vehicles in Illinois. Injury crashes accounted for 20.8% of these crashes (63,109), while fatal crashes (1,085) accounted for less than 1.0% of these crashes.
- ✦ Crashes involving an A-injury accounted for 10.6% of injury crashes.
- ✦ Crashes involving pedestrians accounted for 1.6% of total crashes, 19.7% of fatal crashes and 7% of injury crashes.
- ✦ Crashes involving pedalcyclists accounted for 1.1% of total crashes, 3.4% of fatal crashes and 4.7% of injury crashes.
- ✦ Crashes involving speed accounted for 31.1% of total crashes, 45.3% of fatal crashes and 35.2% of injury crashes.
- ✦ Crashes involving motorcycles accounted for 1.1% of total crashes, 13.1% of fatal crashes and 3.8% of injury crashes.
- ✦ Crashes involving tractor-trailers accounted for 3.7% of total crashes, 8.4% of fatal crashes and 2.8% of injury crashes.
- ✦ Crashes occurring in work zones accounted for 2% of total crashes, 1.4% of fatal crashes and 1.5% of injury crashes.
- ✦ Crashes involving deer accounted for 4.7% of total crashes.
- ✦ There was an average of 1.1 deaths per fatal crash.
- ✦ 80.3% of fatal crashes occurred on dry roads.
- ✦ 45.8% of fatal crashes occurred during daylight hours.

2024 Illinois Crash Facts & Statistics

Registered Motor Vehicles*	10,998,170
Licensed Drivers*	9,354,742
Vehicle Miles Traveled (Billions)	104.24
Total Crashes	303,913
Total Injuries	89,023
A-Injuries	8,124
Total Deaths	1,178
Mileage Death Rate (Per Hundred Million Vehicle Miles Traveled)	1.1

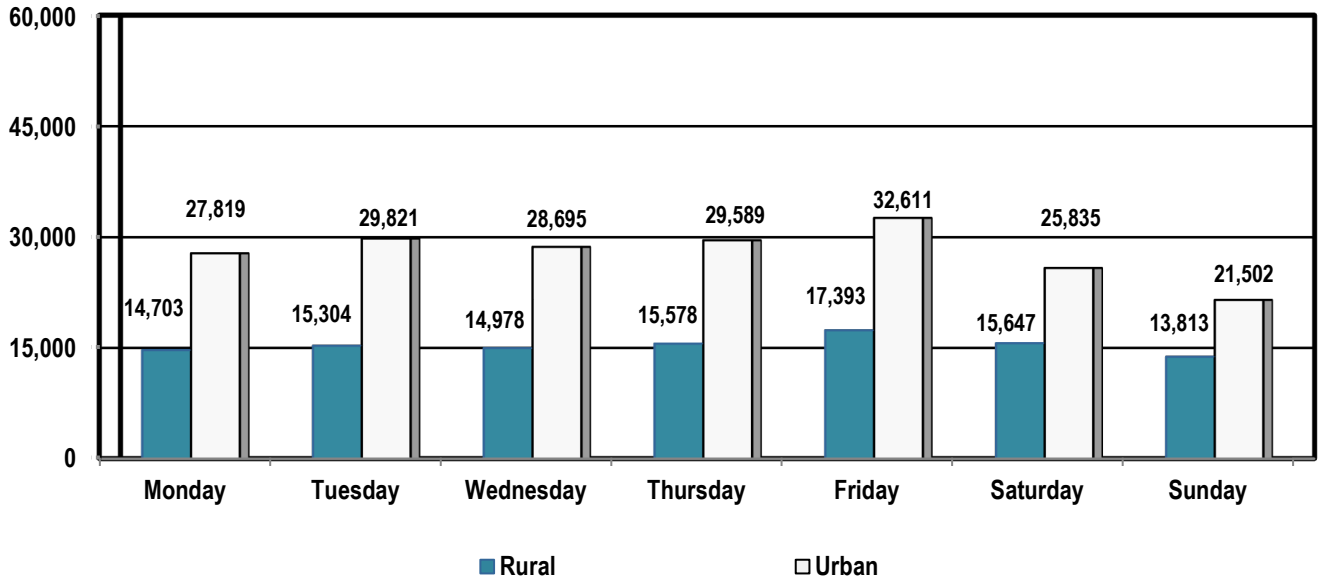
*Source: Illinois Secretary of State's office.

Illinois' Highway Safety Clock



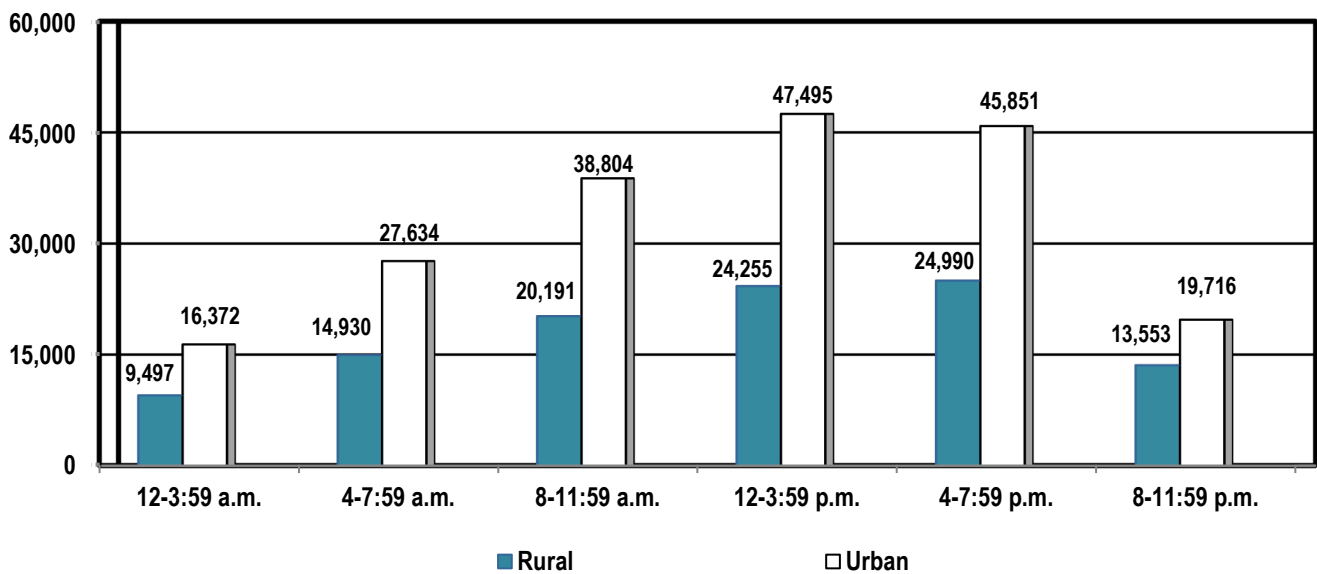
2024 Illinois Crash Facts & Statistics

Crashes by Day of Week*



*A total of 625 crashes occurred in an unknown location. The greatest number of crashes occurred on Fridays, with 32,611 crashes in urban locations and 17,393 crashes in rural locations.

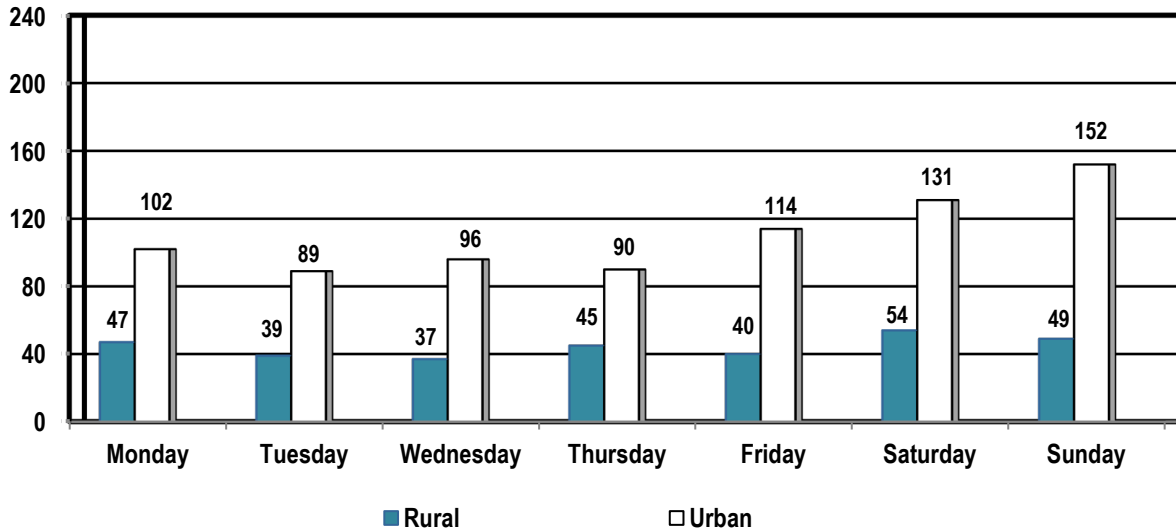
Crashes by Time of Day*



*A total of 625 crashes occurred in an unknown location. More than 66% of all crashes occurred between 8 a.m. and 7:59 p.m. Of these crashes, 65.6% occurred on urban roads.

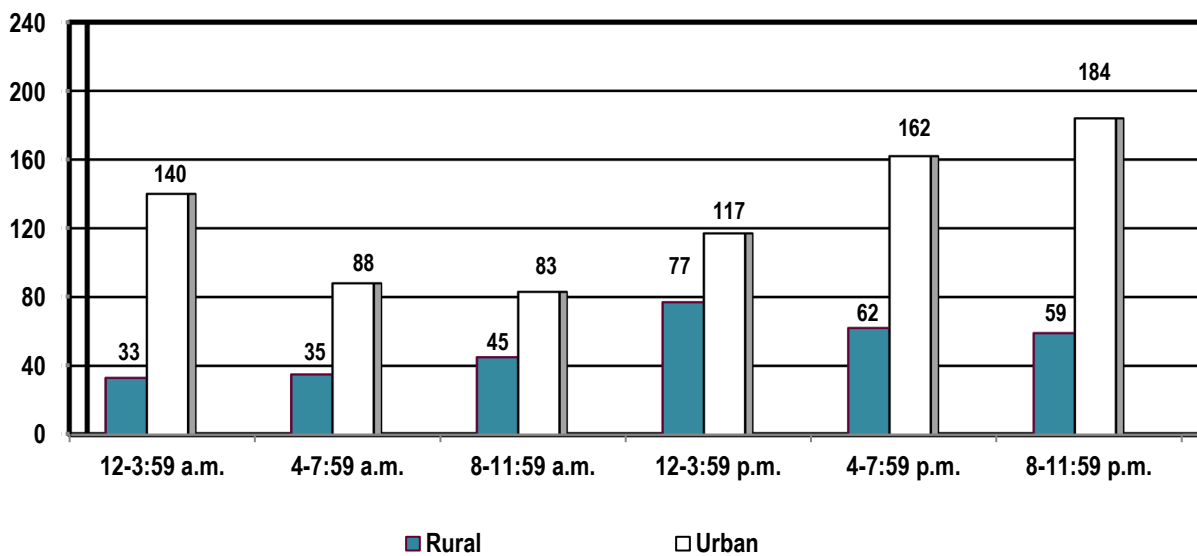
2024 Illinois Crash Facts & Statistics

Fatal Crashes by Day of Week*



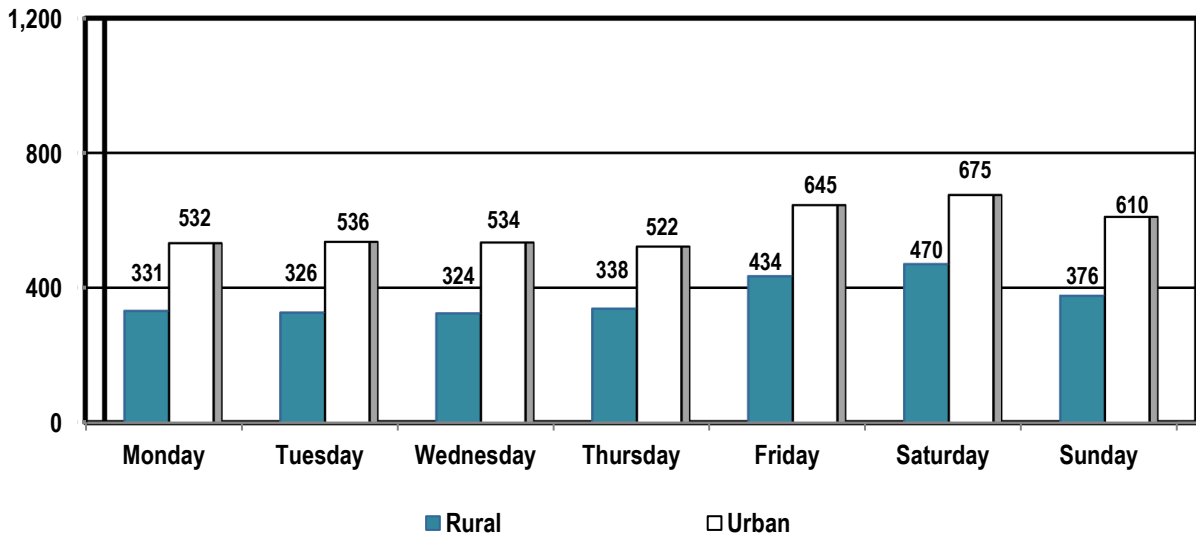
* The greatest number of fatal crashes occurred on Sunday, with 152 crashes in urban locations and 49 crashes in rural locations.

Fatal Crashes by Time of Day*



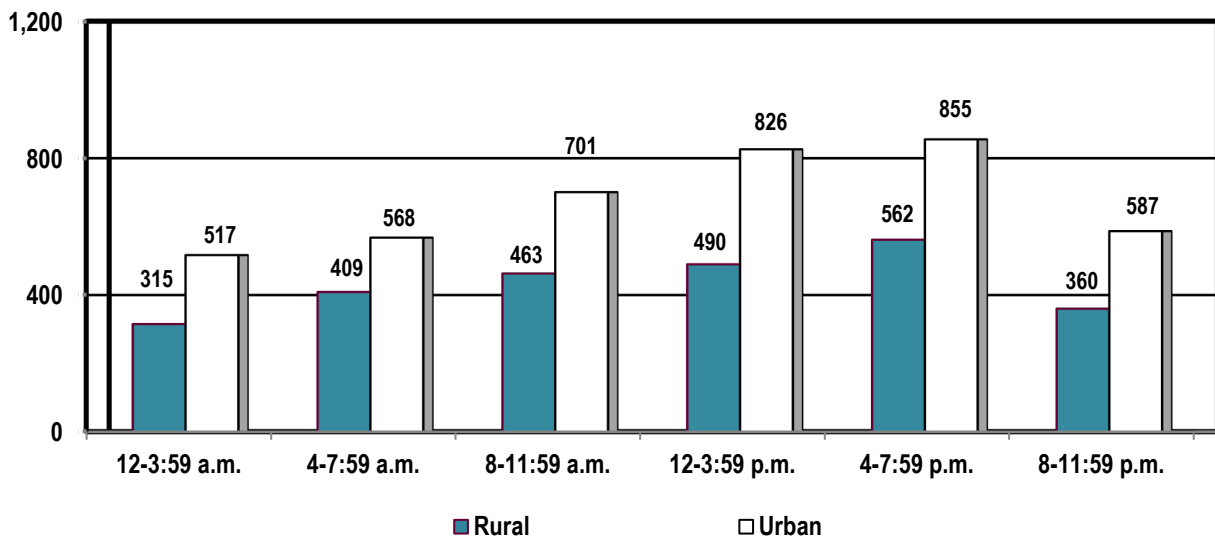
* In all, 59% of all fatal crashes occurred between 4 p.m. and 3:59 a.m. Of these crashes, 75.9% occurred on urban roads (486 crashes).

A-Injury Crashes by Day of Week*



*A total of 12 crashes occurred in an unknown location. The greatest number of A-injury crashes occurred on Saturdays. The second-largest number of A-injury crashes occurred on Fridays.

A-Injury Crashes by Time of Day*



*A total of 12 crashes occurred in an unknown location. Approximately 55.2% of all A-injury crashes occurred between 12 p.m. and 11:59 p.m. Of these, 61.6% occurred on urban roads.

2024 Illinois Crash Facts & Statistics

Crashes by Type of Road

In 2024, there were 303,913 total crashes. Of these crashes, 64.45% occurred on urban roads, while 68.32% of all injury crashes occurred on urban roads.

TYPE OF ROAD	CRASH SEVERITY			Total
	Fatal	Injury	A-Injury	
URBAN				
Freeway & Expressway/Toll	6	266	23	1,492
<i>Percent</i>	0.55	0.42	0.35	0.49
Interstate/Toll	122	4,584	401	33,240
<i>Percent</i>	11.24	7.26	6.02	10.94
Local Road or Street/Toll	76	7,350	685	35,753
<i>Percent</i>	7.00	11.64	10.28	11.76
Major Collector/Toll	77	6,136	573	24,543
<i>Percent</i>	7.10	9.72	8.60	8.08
Minor Arterial/Toll	197	11,152	1,085	43,482
<i>Percent</i>	18.16	17.67	16.28	14.31
Minor Collector/Toll	9	747	77	3,155
<i>Percent</i>	0.83	1.18	1.16	1.04
Other Principal Arterial/Toll	287	12,881	1,210	54,207
<i>Percent</i>	26.45	20.41	18.15	17.84
Unknown	0	0	0	0
<i>Percent</i>	0.00	0.00	0.00	0.00
Urban Total	774	43,116	4,054	195,872
<i>Percent</i>	71.34	68.32	60.83	64.45

2024 Illinois Crash Facts & Statistics

Crashes by Type of Road

In 2024, there were 303,913 total crashes. Of these crashes, 35.34% occurred on rural roads, while 28.66% of all fatal crashes occurred on rural roads.

TYPE OF ROAD	CRASH SEVERITY			Total
	Fatal	Injury	A-Injury	
Rural				
Freeway & Expressway	0	11	4	87
<i>Percent</i>	<i>0.00</i>	<i>0.02</i>	<i>0.06</i>	<i>0.03</i>
Interstate/Toll	31	723	119	4,249
<i>Percent</i>	<i>2.85</i>	<i>1.14</i>	<i>1.79</i>	<i>1.40</i>
Local Road or Street/Toll	50	959	197	4,186
<i>Percent</i>	<i>4.61</i>	<i>1.52</i>	<i>2.96</i>	<i>1.38</i>
Major Collector	95	1,367	343	5,805
<i>Percent</i>	<i>8.76</i>	<i>2.17</i>	<i>5.15</i>	<i>1.91</i>
Minor Arterial	63	1,198	277	5,574
<i>Percent</i>	<i>5.81</i>	<i>1.90</i>	<i>4.16</i>	<i>1.83</i>
Minor Collector	11	194	46	790
<i>Percent</i>	<i>1.01</i>	<i>0.31</i>	<i>0.69</i>	<i>0.26</i>
Other Principal Arterial	58	817	184	4,024
<i>Percent</i>	<i>5.35</i>	<i>1.29</i>	<i>2.76</i>	<i>1.32</i>
Unknown	3	14,631	1,429	82,701
<i>Percent</i>	<i>0.28</i>	<i>23.18</i>	<i>21.44</i>	<i>27.21</i>
Rural Total	311	19,900	2,599	107,416
<i>Percent</i>	<i>28.66</i>	<i>31.53</i>	<i>38.99</i>	<i>35.34</i>
Overall Unknown	0	93	12	625
<i>Percent</i>	<i>0.00</i>	<i>0.15</i>	<i>0.18</i>	<i>0.21</i>
Total	1,085	63,109	6,665	303,913
<i>Percent</i>	<i>100.00</i>	<i>100.00</i>	<i>100.00</i>	<i>100.00</i>

2024 Illinois Crash Facts & Statistics

Crashes by Type of Collision

At 26.82%, crashes involving fixed objects comprise the largest number of fatal crashes in 2024. Front-to-rear collisions comprise the highest number of injury crashes.

TYPE OF COLLISION	CRASH SEVERITY			Total
	Fatal	Injury	A-Injury	
Vehicle Overturned	43	1,503	382	2,689
Pedestrian	202	4,258	819	4,636
Train	4	24	9	67
Pedalcyclist	37	2,955	404	3,369
Animal	6	752	81	15,245
Fixed Object	291	6,525	1,066	25,996
Other Object	9	1,035	165	5,437
Other Non-Collision	11	582	133	2,293
Parked	12	2,094	207	35,144
Front to Rear	85	14,293	707	74,505
Front to Front	114	1,282	288	2,612
Sideswipe-Same Direction	22	3,210	233	39,491
Sideswipe-Opposite Direction	14	636	86	2,936
Angle	104	9,614	856	29,747
Turning	131	13,960	1,204	54,608
Rear to Side	0	162	9	1,901
Rear to Rear	0	17	0	445
Rear to Front	0	207	16	2,792
TOTAL	1,085	63,109	6,665	303,913

Work Zone Crashes

A work zone is an area of a trafficway (right-of-way line to right-of-way line) where construction, maintenance or utility work activities are identified by warning signs, signals or indicators, including those on transport devices that mark the beginning and end of a construction, maintenance or utility work activity. It extends from the first warning sign, signal or flashing lights to the “END ROAD WORK” sign or the last traffic control device pertinent to that work activity. In Illinois, the first warning sign denoting the beginning of a work zone consists of an orange diamond sign displaying the message “ROAD CONSTRUCTION AHEAD” or “ROAD WORK AHEAD.” Work zones also include roadway sections where there is ongoing, moving work activity, such as lane line painting or roadside mowing, only if the beginning of the ongoing, moving work activity is designated by warning signs or signals.

A work zone crash is a motor vehicle traffic crash in which the first harmful event occurs within the boundaries of a work zone or the approach to or exit from a work zone, resulting in activity, behavior or control related to the movement of the traffic units through the work zone.

Workers do not have to be present at the time of the crash for it to be considered a work zone crash.

Total Crashes	6,186
Fatal Crashes	15
Injury Crashes	972
A-Injury Crashes	80
People Killed	15
People Injured	1,337

CRASHES BY TYPE OF ROAD*

URBAN	
Freeway & Expressway	77
Interstate/Toll	3,060
Local Road or Street	205
Major Collector/Toll	193
Minor Arterial/Toll	551
Minor Collector	14
Other Principal Arterial	798
Unknown	0
Urban Total	4,898
RURAL	
Freeway & Expressway	2
Interstate/Toll	498
Local Road or Street	10
Major Collector	21
Minor Arterial	70
Minor Collector	4
Other Principal Arterial	82
Unknown	578
Rural Total	1,265

*23 crashes occurred at an unknown location.

FATALITIES AND A-INJURIES BY PERSON TYPE

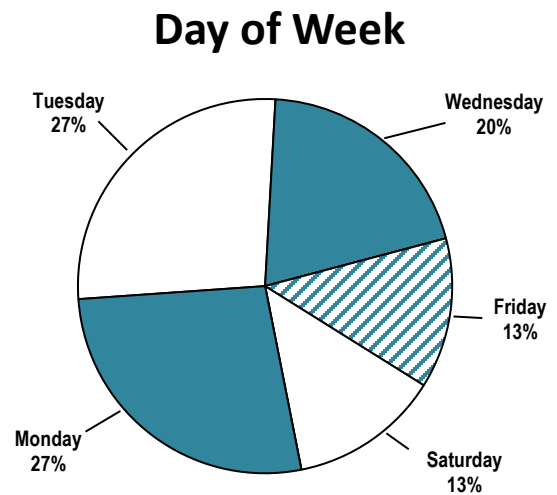
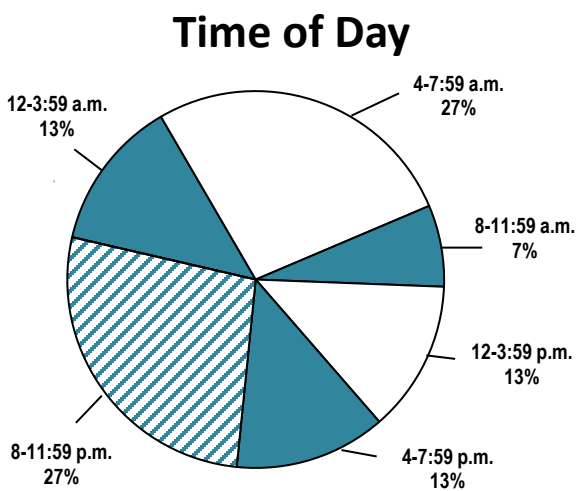
Person Type	Fatalities	A-Injuries
Drivers	8	63
Passengers	0	23
Workers	4	10
Pedestrians	3	3
Pedalcyclists	0	0

2024 Illinois Crash Facts & Statistics

Large Trucks Involved in Work Zone Crashes by Crash Severity

TRUCK TYPE	CRASH SEVERITY				Total
	Fatal	Injury	A-Injury	Property Damage	
Truck Single Unit	2	52	1	323	377
Tractor with Semi-Trailer	8	185	20	1,203	1,396
Tractor without Semi-Trailer	0	10	1	71	81
Single Unit Truck with Trailer	2	19	4	101	122
TOTAL	12	266	26	1,698	1,976

Fatal Work Zone Crashes by Time of Day and Day of Week



2024 Illinois Crash Facts & Statistics

Deer Crashes

In 2024, there were 14,426 crashes involving deer. Deer crashes account for about 5% of total crashes.

A total of 20% of deer crashes occurred during daylight hours; 61.8% occurred in darkness. Approximately 69% of deer crashes were on rural roads, with 24.6% of the crashes on rural major collectors.

Total Crashes	14,426
Fatal Crashes	5
Injury Crashes	697
A-Injury Crashes	73
People Killed	5
People Injured	790

CRASHES BY LIGHT CONDITION

Daylight	2,882
Dawn	1,129
Dusk	657
Darkness	8,914
Darkness-Lighted Road	759
Unknown	85
TOTAL	14,426

FATAL CRASHES AND A-INJURY CRASHES BY TYPE OF ROAD*

Type of Road	Fatal	A-Injury
URBAN		
Freeway & Expressway/Toll	0	0
Interstate/Toll	0	0
Local Road or Street/Toll	1	1
Major Collector	0	2
Minor Arterial	0	5
Minor Collector	0	2
Other Principal Arterial	0	6
Unknown	0	0
Urban Total	1	16
RURAL		
Freeway & Expressway	0	0
Interstate/Toll	0	2
Local Street or Road	1	11
Major Collector	2	24
Minor Arterial	1	10
Minor Collector	0	2
Other Principal Arterial	0	2
Unknown	0	6
Rural Total	4	57

2024 Illinois Crash Facts & Statistics

Pedestrian and Pedalcycle Crashes

	PEDESTRIAN			PEDALCYCLE		
Total Crashes	4,832			3,413		
Fatal Crashes	214			37		
Injury Crashes	4,415			2,994		
A-Injury Crashes	860			408		
Property Damage Crashes	203			382		
Number of Crashes by Type of Road*						
	PEDESTRIAN Crash Severity			PEDALCYCLE Crash Severity		
	Fatal	Injury	A-Injury	Fatal	Injury	A-Injury
Urban						
Freeway & Expressway/Toll	2	2	0	0	0	0
Interstate/Toll	23	42	14	0	15	3
Local Road or Street/Toll	20	811	149	3	541	64
Major Collector/Toll	14	511	87	6	411	50
Minor Arterial/Toll	55	715	163	9	516	81
Minor Collector	2	51	8	0	51	10
Other Principal Arterial/Toll	81	546	139	14	380	65
Unknown	0	0	0	0	0	0
Urban Total	197	2,678	560	32	1,914	273
Rural						
Freeway & Expressway	0	0	0	0	0	0
Interstate/Toll	5	1	0	0	0	0
Local Road or Street	0	16	3	1	13	3
Major Collector	4	7	3	1	14	6
Minor Arterial	3	7	2	2	10	5
Minor Collector	2	1	0	1	1	0
Other Principal Arterial	2	3	2	0	1	0
Unknown	1	1,698	288	0	1,039	120
Rural Total	17	1,733	298	5	1,078	134

*In 2024, there were 4 pedestrian injury crashes and 2 A-injury crashes at unknown locations. There were 2 pedalcycle injury crashes and 1 A-injury crash at unknown locations.

Train Crashes

Train crashes are crashes in which motor vehicles are involved with trains. Pedestrians and pedalcyclists hit by trains are not included.

Fatal crashes and A-injury crashes involving trains account for less than 1% of all fatal and A-injury crashes combined in 2024.

Total Crashes	70
Injury Crashes	25
A-Injury Crashes	9
Fatal Crashes	5
People Killed	8
People Injured	32
People with A-Injuries	11

Crashes by Type of Traffic Control

	Fatal	A-Injury
RR Gates	3	6
Other RR Crossing	1	1
Warning Sign	0	0
Stop Sign/Flasher	0	1
RR Crossing Sign	0	0
No Control	1	0
Traffic Signal	0	1
Yield	0	0
TOTAL	5	9

Fatalities and A-Injuries by Type of Road

	Fatalities	A-Injuries
Urban		
Local Street or Road	0	0
Major Collector	3	1
Minor Arterial	1	5
Minor Collector	0	1
Other Principal Arterial	1	1
Unknown	0	0
Urban Total	5	8
Rural		
Local Street or Road	2	3
Major Collector	0	0
Minor Arterial	0	0
Minor Collector	0	0
Other Principal Arterial	0	0
Unknown	1	0
Rural Total	3	3

2024 Illinois Crash Facts & Statistics

County Motor Vehicle Crash Statistics

COUNTY	CRASHES	FATAL CRASHES	INJURY CRASHES	A-INJURY CRASHES
Adams	1,180	1	299	48
Alexander	71	2	21	2
Bond	283	3	66	13
Boone	787	6	228	29
Brown	105	1	7	1
Bureau	540	4	92	15
Calhoun	76	0	13	7
Carroll	205	1	39	11
Cass	224	1	43	9
Champaign	2,992	10	767	102
Christian	517	6	120	23
Clark	365	3	62	17
Clay	256	5	63	12
Clinton	529	3	119	20
Coles	847	10	178	34
Cook	164,559	333	31,456	2,697
Crawford	382	5	56	12
Cumberland	254	1	44	13
DeKalb	1,522	8	383	60
DeWitt	287	2	62	9
Douglas	298	2	54	13
DuPage	17,323	54	3,783	292
Edgar	226	4	55	16
Edwards	88	2	16	5
Effingham	1,042	7	209	28
Fayette	384	2	89	26
Ford	188	4	57	11
Franklin	719	2	162	31
Fulton	702	6	117	31
Gallatin	70	1	19	4
Greene	119	1	29	7
Grundy	1,058	8	234	38
Hamilton	190	1	53	5
Hancock	290	1	43	10
Hardin	34	0	5	4
Henderson	121	1	17	2
Henry	802	2	157	31
Iroquois	526	5	117	19
Jackson	967	13	260	43
Jasper	205	2	41	11
Jefferson	1,018	9	261	43
Jersey	412	5	77	24
Jo Daviess	424	0	74	19
Johnson	231	2	43	7
Kane	10,445	29	2,589	237
Kankakee	2,132	18	394	58
Kendall	2,120	13	495	36
Knox	840	8	194	26
Lake	11,971	48	2,851	291
LaSalle	2,334	26	539	94
Lawrence	333	2	54	9

2024 Illinois Crash Facts & Statistics

County Statistics (continued)

COUNTY	CRASHES	FATAL CRASHES	INJURY CRASHES	A-INJURY CRASHES
Lee	744	0	143	25
Livingston	565	7	130	23
Logan	571	4	117	20
McDonough	384	0	88	25
McHenry	4,427	24	1,099	127
McLean	3,024	11	649	67
Macon	2,235	13	491	48
Macoupin	640	5	137	38
Madison	5,251	37	1,264	183
Marion	809	3	151	26
Marshall	166	2	43	11
Mason	126	2	24	6
Massac	225	1	61	20
Menard	122	4	19	5
Mercer	211	2	37	8
Monroe	590	3	105	14
Montgomery	485	4	93	22
Morgan	558	5	143	26
Moultrie	251	3	38	8
Ogle	722	3	150	28
Peoria	3,903	16	981	157
Perry	301	4	63	18
Piatt	233	4	42	10
Pike	398	1	54	8
Pope	58	2	12	3
Pulaski	86	2	24	3
Putnam	106	2	15	5
Randolph	599	9	108	26
Richland	219	4	62	14
Rock Island	2,992	11	557	58
St. Clair	5,175	40	1,448	191
Saline	400	4	76	20
Sangamon	4,622	20	1,000	114
Schuyler	221	2	31	4
Scott	67	1	7	2
Shelby	317	4	55	13
Stark	77	2	14	1
Stephenson	755	4	160	23
Tazewell	2,413	16	547	61
Union	298	3	71	20
Vermilion	1,463	8	343	47
Wabash	122	1	30	6
Warren	355	0	58	6
Washington	355	4	79	18
Wayne	342	2	57	15
White	266	2	58	14
Whiteside	729	5	165	23
Will	13,570	56	2,972	250
Williamson	1,385	10	295	49
Winnebago	5,913	26	1,452	131
Woodford	474	4	85	20
TOTAL	303,913	1,085	63,109	6,665

Person Data

The data reflected in this section include all people injured, uninjured and killed in motor vehicle crashes by person type.

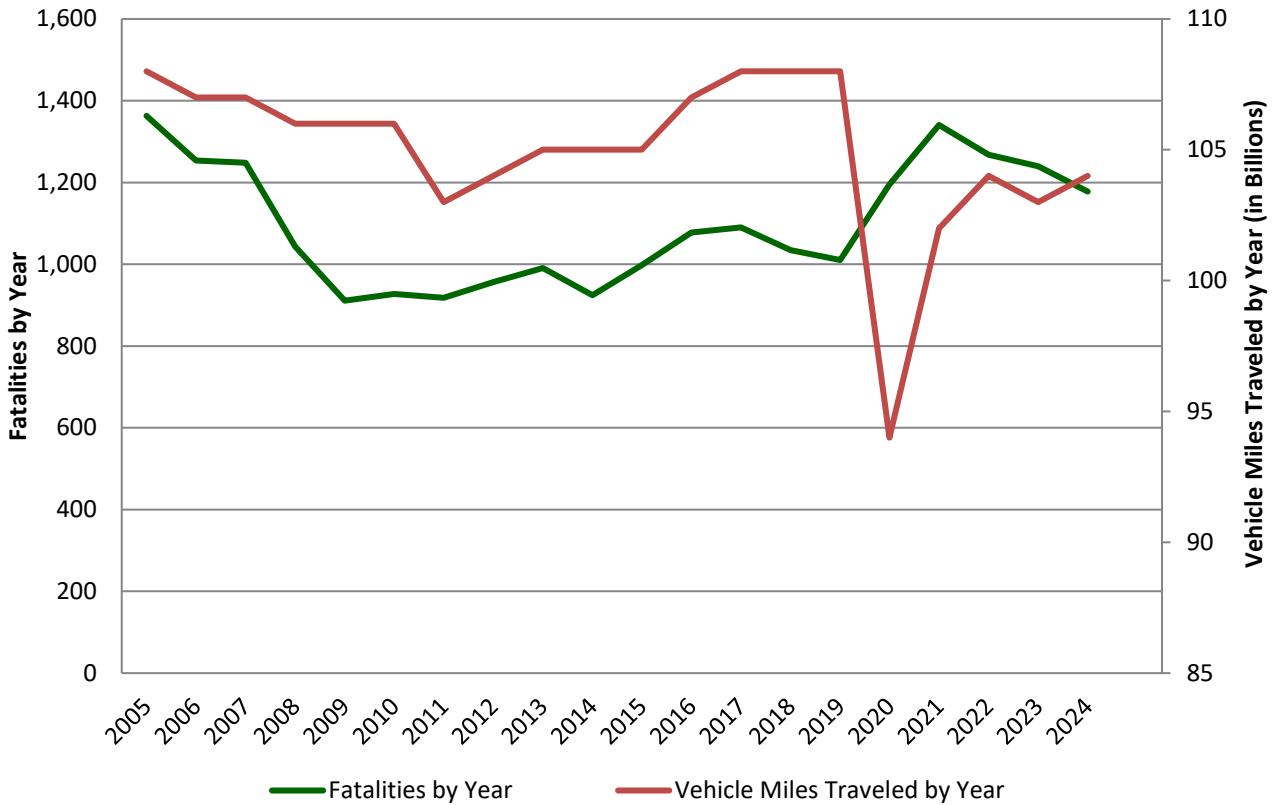
Person Data Overview

- ✦ 89,023 people were injured in motor vehicle crashes.
- ✦ 8,124 people had A-injuries occurring from these crashes. These A-injuries account for 9.1% of total injuries.
- ✦ 1,178 people were killed in motor vehicle crashes.
- ✦ 714 drivers were killed in motor vehicle crashes.
- ✦ 209 passengers of a motor vehicle were killed in crashes.
- ✦ 217 pedestrians were killed in motor vehicle crashes.
- ✦ 37 pedalcyclists were killed in motor vehicle crashes.
- ✦ 144 motorcyclists were killed in motor vehicle crashes.
- ✦ Teenagers, age 16-19, account for 8% of the total A-injuries and 6.8% of the total fatalities.
- ✦ The total estimated cost of crashes in Illinois for 2024 was \$8.3 billion.
 - ✦ Each fatality was estimated to cost \$2,009,575*.
 - ✦ An incapacitating injury (A-injury) was estimated to cost \$171,925*.
 - ✦ A non-incapacitating evident injury (B-injury) was estimated to cost \$45,300*.
 - ✦ A possible injury (C-injury) was estimated to cost \$27,795*.
 - ✦ A property damage crash was estimated to cost \$6,485*.

*Based on estimates made by the National Safety Council for 2024. The estimated costs are a measure of the dollars spent and income not received because of crashes, injuries and fatalities. The 2024 estimated cost of crashes in Illinois was calculated by using injury severity and costs for those particular injuries.

2024 Illinois Crash Facts & Statistics

Illinois Fatalities and Vehicle Miles Traveled* 2005-2024



YEAR	FATALITIES	TRAVEL
2005	1,363	107.86
2006	1,254	106.81
2007	1,248	107.40
2008	1,043	105.64
2009	911	105.73
2010	927	105.74
2011	918	103.37
2012	956	104.46
2013	991	105.48
2014	924	105.03

YEAR	FATALITIES	TRAVEL
2015	998	105.37
2016	1,078	107.17
2017	1,090	108.16
2018	1,035	108.06
2019	1,010	107.61
2020	1,195	94.00
2021	1,341	102.22
2022	1,268	103.97
2023	1,240	103.08
2024	1,178	104.24

*Travel is stated in billions of miles.

2024 Illinois Crash Facts & Statistics

Drivers Involved in Crashes by Age and Crash Severity

AGE	Fatal		CRASH SEVERITY				Total		TOTAL LICENSED DRIVERS
	Crashes	Rate	Injury Crashes	Rate	A-Injury Crashes	Rate	Crashes	Rate	
15 or Younger	7	0.11	136	2.04	23	0.35	549	8.24	66,603
16	19	0.16	1,508	12.93	157	1.35	6,811	58.41	116,608
17	20	0.15	2,011	15.44	188	1.44	9,085	69.75	130,243
18	36	0.27	2,389	17.94	216	1.62	10,308	77.39	133,195
19	40	0.29	2,492	18.23	240	1.76	10,636	77.80	136,717
20-24	166	0.22	13,045	17.52	1,272	1.71	55,655	74.77	744,379
25-29	146	0.18	12,535	15.78	1,165	1.47	54,874	69.10	794,153
30-34	186	0.23	11,888	14.49	1,090	1.33	52,277	63.72	820,386
35-39	134	0.16	10,410	12.78	1,018	1.25	45,929	56.36	814,869
40-44	139	0.17	9,248	11.57	809	1.01	41,113	51.45	799,107
45-49	137	0.19	7,778	10.54	716	0.97	35,793	48.51	737,806
50-54	111	0.15	7,561	10.56	758	1.06	32,947	46.00	716,277
55-59	87	0.12	6,504	9.30	626	0.89	29,276	41.85	699,486
60-64	97	0.13	6,091	8.40	591	0.82	26,563	36.65	724,751
65-69	94	0.14	4,698	7.04	437	0.65	20,045	30.04	667,213
70-74	63	0.12	3,361	6.23	339	0.63	13,857	25.70	539,186
75 or Older	95	0.13	4,616	6.47	477	0.67	18,228	25.54	713,763
Unknown	91	--	8,307	--	766	--	69,519	--	--
TOTAL	1,668	0.18	114,578	12.25	10,888	1.16	533,465	57.03	9,354,742

Rates are expressed as the number of drivers involved in a particular type of crash per 1,000 licensed drivers.

2024 Illinois Crash Facts & Statistics

Drivers Involved in Fatal Crashes by Age and Location

AGE	RURAL ROADWAYS		URBAN ROADWAYS		TOTAL	
	Drivers		Drivers		Drivers	
	Involved	Killed	Involved	Killed	Involved	Killed
15 or Younger	4	4	3	1	7	5
Percent	0.8	1.6	0.3	0.2	0.4	0.7
16	10	4	9	3	19	7
Percent	2.1	1.6	0.8	0.7	1.1	1.0
17	6	3	14	3	20	6
Percent	1.3	1.2	1.2	0.7	1.2	0.8
18	9	5	27	16	36	21
Percent	1.9	2.0	2.3	3.5	2.2	2.9
19	4	4	36	16	40	20
Percent	0.8	1.6	3.0	3.5	2.4	2.8
20-24	43	19	123	41	166	60
Percent	9.0	7.5	10.3	8.9	10.0	8.4
25-34	82	44	250	102	332	146
Percent	17.1	17.3	21.0	22.2	19.9	20.4
35-44	84	40	189	68	273	108
Percent	17.5	15.7	15.9	14.8	16.4	15.1
45-54	70	39	178	78	248	117
Percent	14.6	15.3	15.0	17.0	14.9	16.4
55-64	65	36	119	49	184	85
Percent	13.6	14.1	10.0	10.7	11.0	11.9
65-74	56	32	101	46	157	78
Percent	11.7	12.5	8.5	10.0	9.4	10.9
75 or Older	38	25	57	35	95	60
Percent	7.9	9.8	4.8	7.6	5.7	8.4
Unknown	8	0	83	1	91	1
Percent	1.7	0.0	7.0	0.2	5.5	0.1
TOTAL	479	255	1,189	459	1,668	714
Percent	100.0	100.0	100.0	100.0	100.0	100.0

2024 Illinois Crash Facts & Statistics

Injuries by Person Type, Age and Gender*

Occupant: Any person who is part of a transport vehicle.

Non-Occupant: Any person who is part of a pedalcycle in transport (pedalcyclist) or any person who is not an occupant (pedestrian).

Drivers injured amount to 66.2% of all injuries for 2024.

Passengers represent 25.2% of the total number of injuries in 2024.

Pedestrians account for 5.1% of all injuries.

Pedalcyclists account for 3.4% of all injuries.

AGE	DRIVERS								PASSENGERS								TOTAL OCCUPANT INJURIES			
	Male	Female	Total	%	Male	Female	Total	%	Male	Female	Total	%	Male	Female	Total	%				
	4 or Younger	1	0	1	0.0	660	656	1,316	6.0	661	656	1,317	1.6							
5-9	0	0	0	0.0	752	919	1,671	7.7	752	919	1,671	2.1								
10-14	2	1	3	0.0	779	915	1,694	7.8	781	916	1,697	2.1								
15-19	2,409	1,977	4,386	7.5	1,184	1,592	2,776	12.7	3,593	3,569	7,162	8.9								
20-24	3,917	3,295	7,212	12.3	897	1,459	2,356	10.8	4,814	4,754	9,568	11.9								
25-34	7,017	6,281	13,298	22.7	1,313	1,974	3,287	15.1	8,330	8,255	16,585	20.6								
35-44	5,436	5,077	10,513	17.9	867	1,398	2,265	10.4	6,303	6,475	12,778	15.9								
45-54	4,283	4,040	8,323	14.2	534	1,183	1,717	7.9	4,817	5,223	10,040	12.5								
55-64	3,662	3,150	6,812	11.6	433	1,023	1,456	6.7	4,095	4,173	8,268	10.3								
65-74	2,315	2,230	4,545	7.8	253	802	1,055	4.8	2,568	3,032	5,600	7.0								
75 or Older	1,312	1,406	2,718	4.6	208	559	767	3.5	1,520	1,965	3,485	4.3								
Unknown	483	339	822	1.4	611	814	1,425	6.5	1,094	1,153	2,247	2.8								
TOTAL	30,837	27,796	58,633	100.0	8,491	13,294	21,785	100.0	39,328	41,090	80,418	100.0								

AGE	PEDESTRIANS				PEDALCYCLISTS				TOTAL NON-OCCUPANT INJURIES			
	Male	Female	Total	%	Male	Female	Total	%	Male	Female	Total	%
	4 or Younger	50	36	86	1.9	15	2	17	0.6	65	38	103
5-9	66	60	126	2.8	42	16	58	1.9	108	76	184	2.4
10-14	159	140	299	6.6	295	76	371	12.4	454	216	670	8.9
15-19	242	216	458	10.0	369	52	421	14.1	611	268	879	11.6
20-24	226	206	432	9.5	224	68	292	9.8	450	274	724	9.6
25-34	434	398	832	18.2	430	150	580	19.4	864	548	1,412	18.7
35-44	366	279	645	14.1	308	69	377	12.6	674	348	1,022	13.5
45-54	260	217	477	10.5	245	39	284	9.5	505	256	761	10.1
55-64	280	217	497	10.9	253	49	302	10.1	533	266	799	10.6
65-74	180	147	327	7.2	142	21	163	5.4	322	168	490	6.5
75 or Older	98	96	194	4.3	38	6	44	1.5	136	102	238	3.1
Unknown	109	81	190	4.2	67	17	84	2.8	176	98	274	3.6
TOTAL	2,470	2,093	4,563	100.0	2,428	565	2,993	100.0	4,898	2,658	7,556	100.0

*The totals above do not include 259 drivers, 640 passengers, 12 pedestrians and 8 pedalcyclists whose gender was unknown. An additional 130 occupants of non-motor vehicles were also injured.

2024 Illinois Crash Facts & Statistics

A-Injuries by Person Type, Age and Gender*

Occupant: Any person who is part of a transport vehicle.

Non-Occupant: Any person who is part of a pedalcycle in transport (pedalcyclist) or any person who is not an occupant (pedestrian).

Drivers injured amount to 63.7% of A-injuries for 2024.

Passengers represent 20.3% of the total number of A-injuries in 2024.

Pedestrians account for 10.8% of A-injuries.

Pedalcyclists account for 5% of A-injuries.

AGE	DRIVERS				PASSENGERS				TOTAL OCCUPANT A-INJURIES			
	Male	Female	Total	%	Male	Female	Total	%	Male	Female	Total	%
	4 or Younger	0	0	0	0.0	27	32	59	3.7	27	32	59
5-9	0	0	0	0.0	24	41	65	4.1	24	41	65	1.0
10-14	1	0	1	0.0	40	53	93	5.8	41	53	94	1.4
15-19	256	115	371	7.2	123	128	251	15.7	379	243	622	9.2
20-24	455	201	656	12.7	82	123	205	12.8	537	324	861	12.7
25-34	728	397	1,125	21.8	93	168	261	16.3	821	565	1,386	20.5
35-44	567	339	906	17.6	72	117	189	11.8	639	456	1,095	16.2
45-54	467	257	724	14.1	50	91	141	8.8	517	348	865	12.8
55-64	426	194	620	12.0	34	63	97	6.1	460	257	717	10.6
65-74	223	171	394	7.6	21	61	82	5.1	244	232	476	7.0
75 or Older	145	127	272	5.3	21	61	82	5.1	166	188	354	5.2
Unknown	59	25	84	1.6	32	45	77	4.8	91	70	161	2.4
TOTAL	3,327	1,826	5,153	100.0	619	983	1,602	100.0	3,946	2,809	6,755	100.0

AGE	PEDESTRIANS				PEDALCYCLISTS				TOTAL NON-OCCUPANT A-INJURIES			
	Male	Female	Total	%	Male	Female	Total	%	Male	Female	Total	%
	4 or Younger	5	8	13	1.5	3	0	3	0.7	8	8	16
5-9	10	12	22	2.5	6	2	8	2.0	16	14	30	2.3
10-14	22	17	39	4.5	30	3	33	8.1	52	20	72	5.6
15-19	44	26	70	8.0	45	6	51	12.6	89	32	121	9.4
20-24	36	28	64	7.3	32	8	40	9.9	68	36	104	8.1
25-34	90	72	162	18.5	53	17	70	17.3	143	89	232	18.1
35-44	74	42	116	13.2	49	7	56	13.8	123	49	172	13.4
45-54	62	36	98	11.2	42	9	51	12.6	104	45	149	11.6
55-64	67	50	117	13.4	45	5	50	12.3	112	55	167	13.0
65-74	49	34	83	9.5	31	1	32	7.9	80	35	115	9.0
75 or Older	29	29	58	6.6	9	0	9	2.2	38	29	67	5.2
Unknown	19	15	34	3.9	1	1	2	0.5	20	16	36	2.8
TOTAL	507	369	876	100.0	346	59	405	100.0	853	428	1,281	100.0

*The totals below do not include 20 drivers, 45 passengers and 1 pedestrian whose gender was unknown. An additional 22 occupants of non-motor vehicles were also injured.

2024 Illinois Crash Facts & Statistics

Fatalities by Person Type, Age and Gender*

Occupant: Any person who is part of a transport vehicle.

Non-Occupant: Any person who is part of a pedalcycle in transport (pedalcyclist) or any person who is not an occupant (pedestrian).

Drivers killed amount to 60.6% of all fatalities.

Passengers represent 17.7% of the total number of fatalities, an increase of 4.5% from 2023 to 2024.

Pedestrians account for 18.4% of all fatalities, representing a 11.3% increase from 2023 to 2024.

Pedalcyclists account for 3.1% of all fatalities.

AGE	DRIVERS				PASSENGERS				TOTAL OCCUPANT FATALITIES			
	Male	Female	Total	%	Male	Female	Total	%	Male	Female	Total	%
4 or Younger	0	0	0	0.0	9	3	12	5.7	9	3	12	1.3
5-9	0	0	0	0.0	3	4	7	3.3	3	4	7	0.8
10-14	2	2	4	0.6	8	3	11	5.3	10	5	15	1.6
15-19	40	15	55	7.7	14	8	22	10.5	54	23	77	8.3
20-24	53	7	60	8.4	20	11	31	14.8	73	18	91	9.9
25-34	120	26	146	20.4	12	19	31	14.8	132	45	177	19.2
35-44	87	21	108	15.1	9	21	30	14.4	96	42	138	15.0
45-54	92	25	117	16.4	3	11	14	6.7	95	36	131	14.2
55-64	60	25	85	11.9	7	12	19	9.1	67	37	104	11.3
65-74	56	22	78	10.9	4	8	12	5.7	60	30	90	9.8
75 or Older	38	22	60	8.4	9	11	20	9.6	47	33	80	8.7
Unknown	1	0	1	0.1	0	0	0	0.0	1	0	1	0.1
TOTAL	549	165	714	100.0	98	111	209	100.0	647	276	923	100.0

AGE	PEDESTRIANS				PEDALCYCLISTS				TOTAL NON-OCCUPANT FATALITIES			
	Male	Female	Total	%	Male	Female	Total	%	Male	Female	Total	%
4 or Younger	2	0	2	0.9	0	0	0	0.0	2	0	2	0.8
5-9	0	0	0	0.0	0	0	0	0.0	0	0	0	0.0
10-14	0	2	2	0.9	0	0	0	0.0	0	2	2	0.8
15-19	4	2	6	2.8	2	1	3	8.1	6	3	9	3.5
20-24	8	4	12	5.5	0	0	0	0.0	8	4	12	4.7
25-34	22	8	30	13.8	6	0	6	16.2	28	8	36	14.2
35-44	36	9	45	20.7	5	1	6	16.2	41	10	51	20.1
45-54	19	16	35	16.1	7	1	8	21.6	26	17	43	16.9
55-64	17	9	26	12.0	8	0	8	21.6	25	9	34	13.4
65-74	17	17	34	15.7	4	1	5	13.5	21	18	39	15.4
75 or Older	17	7	24	11.1	1	0	1	2.7	18	7	25	9.8
Unknown	1	0	1	0.5	0	0	0	0.0	1	0	1	0.4
TOTAL	143	74	217	100.0	33	4	37	100.0	176	78	254	100.0

* An additional one occupant of non-motor vehicles was also killed.

2024 Illinois Crash Facts & Statistics

Teen (16-19 Years Old) Fatalities by Age and Person Type

AGE	PERSON TYPE					TOTAL
	DRIVER	OCCUPANT	PEDESTRIAN	PEDALCYCLIST	OCCUPANT NON-MOTOR VEHICLE	
16	7	5	0	0	0	12
17	6	4	0	2	0	12
18	21	5	5	1	0	32
19	20	3	1	0	0	24
TOTAL	54	17	6	3	0	80

Teen (16-19 Years Old) A-Injuries by Age and Person Type

AGE	PERSON TYPE					TOTAL
	DRIVER	OCCUPANT	PEDESTRIAN	PEDALCYCLIST	OCCUPANT NON-MOTOR VEHICLE	
16	66	48	13	15	0	142
17	81	55	10	9	0	155
18	97	56	12	7	0	172
19	113	45	18	4	1	181
TOTAL	357	204	53	35	1	650

Pedestrian

Pedestrians Injured				4,575
Pedestrians with A-Injuries				877
Pedestrians Killed				217
PERSONS KILLED AND INJURED IN PEDESTRIAN CRASHES BY TYPE OF ROAD*				
	Killed	A-Injuries	Injuries	
Urban				
Freeway & Expressway	2	0	2	
Interstate/Toll	24	21	70	
Local Road or Street	20	157	887	
Major Collector	14	93	560	
Minor Arterial	56	173	779	
Minor Collector	2	9	57	
Other Principal Arterial	83	146	591	
Unknown	0	0	0	
Urban Total	201	599	2,946	
Rural				
Freeway & Expressway	0	0	0	
Interstate/Toll	5	0	3	
Local Road or Street	0	3	19	
Major Collector	4	3	7	
Minor Arterial	3	2	9	
Minor Collector	2	0	1	
Other Principal Arterial	3	2	4	
Unknown	1	300	1,862	
Rural Total	18	310	1,905	

*There were 4 additional injuries, including 2 A-injuries, that occurred at unknown locations.

2024 Illinois Crash Facts & Statistics

Pedalcyclist

Pedalcyclists Injured				3,001
Pedalcyclists with A-Injuries				405
Pedalcyclists Killed				37
PERSONS KILLED AND INJURED IN PEDALCYCLE CRASHES BY TYPE OF ROAD*				
	Killed	A-Injuries	Injured	
Urban				
Freeway & Expressway	0	0	0	
Interstate/Toll	0	3	15	
Local Road or Street	3	64	565	
Major Collector	6	51	421	
Minor Arterial	9	81	532	
Minor Collector	0	11	53	
Other Principal Arterial	14	67	395	
Unknown	0	0	0	
Urban Total	32	277	1,981	
Rural				
Freeway & Expressway	0	0	0	
Interstate/Toll	0	0	0	
Local Road or Street	1	3	13	
Major Collector	1	6	15	
Minor Arterial	2	5	10	
Minor Collector	1	0	1	
Other Principal Arterial	0	0	1	
Unknown	0	122	1,071	
Rural Total	5	136	1,111	

*There were 2 additional injuries, including 1 A-injury, that occurred at unknown locations.

Motorcyclist

Motorcyclists Injured				2,556
Motorcyclists with A-Injuries				928
Motorcyclists Killed				144
Non-Motorcyclists Killed				5
PEOPLE KILLED AND INJURED IN MOTORCYCLE CRASHES BY TYPE OF ROAD*				
	Killed	A-Injuries	Injuries	
Urban				
Freeway & Expressway/Toll	0	6	17	
Interstate/Toll	10	52	174	
Local Road or Street	15	79	293	
Major Collector	7	82	251	
Minor Arterial	26	136	453	
Minor Collector	0	10	28	
Other Principal Arterial/Toll	53	197	559	
Unknown	0	0	0	
Urban Total	111	562	1,775	
Rural				
Freeway & Expressway	0	0	1	
Interstate/Toll	1	10	24	
Local Road or Street	3	37	73	
Major Collector	13	79	147	
Minor Arterial	7	52	102	
Minor Collector	2	12	20	
Other Principal Arterial	12	28	53	
Unknown	0	178	585	
Rural Total	38	396	1,005	

*There were an additional 4 injuries, including 1 A-injury, that occurred at unknown locations.

2024 Illinois Crash Facts & Statistics

Occupant Restraint Usage for People Killed and Injured*

TYPE OF RESTRAINT	DRIVER			PASSENGER		
	Fatal	A-Injury	Injury	Fatal	A-Injury	Injury
None Used/Not Applicable	197	500	2,689	58	250	1,329
Shoulder and Lap Belt Used	224	2,630	40,716	65	793	13,526
Shoulder/Lap Belt Used Improperly	0	7	52	1	2	25
Child Restraint – Rear	0	0	0	0	7	242
Child Restraint – Forward	0	0	0	1	18	606
Child Restraint – Unknown Type	0	0	0	1	4	215
Child Restraint – Used Improperly	0	0	0	1	8	48
Child Restraint – Not Used	0	0	0	4	12	91
Booster Seat	0	0	0	1	5	178
Stretcher	0	0	0	0	0	5
Wheelchair	0	0	3	2	1	11
Unknown	125	1,054	12,133	49	413	5,081
TOTAL	546	4,191	55,593	183	1,513	21,357

Occupant Restraint Usage for People with A-Injuries by Age*

TYPE OF RESTRAINT	AGE GROUPS						Unknown
	0-3	4-5	6-9	10-14	15-20	21 or Older	
None Used/Not Applicable	3	1	5	24	126	567	24
Shoulder and Lap Belt Used	9	4	22	43	368	2,928	49
Shoulder/Lap Belt Used Improperly	0	0	0	0	2	7	0
Child Restraint – Rear	7	0	0	0	0	0	0
Child Restraint – Forward	10	2	5	0	0	0	1
Child Restraint – Unknown Type	2	1	1	0	0	0	0
Child Restraint – Used Improperly	5	1	2	0	0	0	0
Child Restraint – Not Used	4	3	5	0	0	0	0
Booster Seat	1	2	1	1	0	0	0
Stretcher	0	0	0	0	0	0	0
Wheelchair	0	0	0	0	0	1	0
Unknown	5	6	13	17	171	1,158	97
TOTAL	46	20	54	85	667	4,661	171

*Excludes buses, motorcycles and miscellaneous vehicles.

Alcohol Data

The data referenced in this section are motor vehicle crashes occurring on Illinois public roadways in which at least one driver involved in the crash, either surviving or deceased, tested positive for alcohol.

2024 Illinois Crash Facts & Statistics

Alcohol-Related Fatal Crash Data Overview

- ✚ 1,085 fatal crashes occurred in 2024; 20.4% of these crashes involved alcohol.
- ✚ 1,178 people were killed in motor vehicle crashes.
- ✚ 714 drivers were killed in motor vehicle crashes. Of these drivers, 502 were tested for BAC and 34.7% tested positive with a BAC of 0.01 or greater.
- ✚ 217 pedestrians were killed in 2024. Of those, 109 were tested for BAC and 41.3% tested positive with a BAC of 0.01 or greater.
- ✚ 37 pedalcyclists were fatally injured in motor vehicle crashes. Of those, 16 were tested for BAC and 37.5% had a positive BAC of 0.01 or greater.
- ✚ Motorcycle operators accounted for 11.5% of the fatalities. Of those, 98 were tested for BAC and 30.6% tested positive with a BAC of 0.01 or greater.
- ✚ Teen drivers accounted for 4.6% of the overall fatalities. Of those, 37 were tested for BAC and 10.8% tested positive with a BAC of 0.01 or greater.

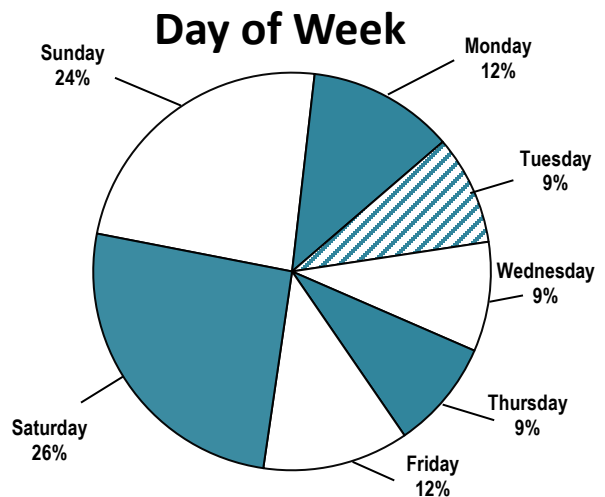
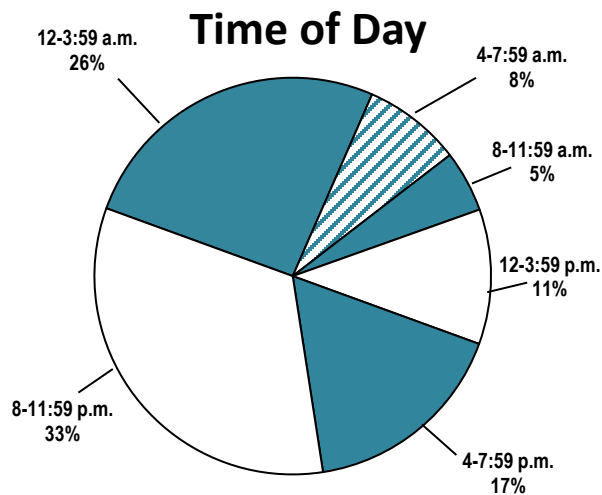
2024 Illinois Crash Facts & Statistics

Drivers Killed by Age and BAC

AGE	BAC TEST RESULTS				TOTAL TESTED	NOT TESTED OR UNKNOWN IF TESTED	TOTAL KILLED
	0.00	0.01-0.07	0.08-0.20	Over 0.20			
15 or Younger	4	0	0	0	4	1	5
16-20	41	1	7	2	51	24	75
21-24	17	1	6	3	27	12	39
25-34	55	8	23	24	110	36	146
35-44	45	6	10	16	77	31	108
45-54	51	6	12	15	84	33	117
55-64	41	5	8	9	63	22	85
65-74	40	1	4	5	50	28	78
75 or Older	34	1	0	1	36	24	60
Unknown	0	0	0	0	0	1	1
TOTAL	328	29	70	75	502	212	714

Fatal Alcohol-Related Crashes by Time of Day and Day of Week

Fatal alcohol-related crashes are fatal crashes in which at least one driver (surviving or deceased) had a Blood Alcohol Concentration of 0.01 or greater.



2024 Illinois Crash Facts & Statistics

Fatal Crashes During the Holidays Total and Alcohol-Related*

HOLIDAY PERIODS	NUMBER OF DAYS	FATAL CRASHES		FATALITIES	
		Alcohol-Related*	Total	Alcohol-Related*	Total
Memorial Day					
6 p.m. on 05/24/2024- 11:59 p.m. on 05/27/2024	3.25	3	of 17 17.6%	3	of 18 16.7%
Fourth of July					
6 p.m. on 07/3/2024- 11:59 p.m. on 07/07/2024	4.25	3	of 17 17.6%	5	of 21 23.8%
Labor Day					
6 p.m. on 08/30/2024- 11:59 p.m. on 09/02/2024	3.25	2	of 11 18.2%	2	of 11 18.2%
Thanksgiving					
6 p.m. on 11/27/2024- 11:59 p.m. on 12/1/2024	4.25	1	of 14 7.1%	1	of 15 6.7%
Christmas					
6 p.m. on 12/24/2024- 11:59 p.m. on 12/25/2024	1.25	1	of 6 16.7%	2	of 7 28.6%
New Year's					
6 p.m. on 12/31/2024- 11:59 p.m. on 01/01/2025	1.25	2	of 4 50%	3	of 5 60%

*Fatal crashes or fatalities resulting from crashes in which at least one driver (surviving or deceased) had a Blood Alcohol Concentration of 0.01 or greater.

Pedestrians and Pedalcyclists Killed by Age and BAC

AGE	BAC TEST RESULTS				Not Tested Or Unknown If Tested	Total
	0.00	0.01-0.07	0.08-0.20	Over 0.20		
Pedestrians						
4 or Younger	0	0	0	0	2	2
5-9	0	0	0	0	0	0
10-15	0	0	0	0	2	2
16-20	3	1	2	0	2	8
21-24	2	0	2	1	5	10
25-34	11	2	3	1	13	30
35-44	10	2	5	9	19	45
45-54	10	3	2	4	16	35
55-64	9	1	0	2	14	26
65-74	12	0	3	2	17	34
75 or Older	7	0	0	0	17	24
Unknown	0	0	0	0	1	1
TOTAL	64	9	17	19	108	217
Pedalcyclists						
4 or Younger	0	0	0	0	0	0
5-9	0	0	0	0	0	0
10-15	0	0	0	0	0	0
16-20	1	0	0	0	2	3
21-24	0	0	0	0	0	0
25-34	1	1	0	1	3	6
35-44	2	0	0	1	3	6
45-54	4	1	0	0	3	8
55-64	1	0	1	0	6	8
65-74	1	1	0	0	3	5
75 or Older	0	0	0	0	1	1
Unknown	0	0	0	0	0	0
TOTAL	10	3	1	2	21	37

Vehicle Data

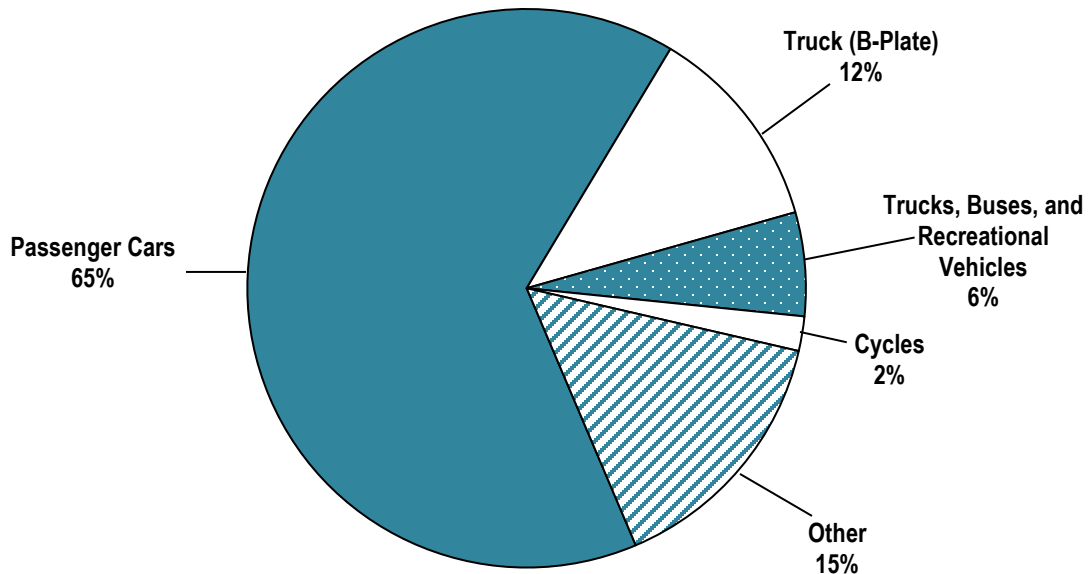
The data reflected in this section are crashes involving a specific vehicle type, including all vehicles involved in the crash as well as persons in those vehicles.

Vehicle Data Overview

- ✚ There were 3,361 motorcycle crashes in 2024.
- ✚ The number of motorcyclists killed decreased by 14.3% from 2023.
- ✚ Motorcyclists injured increased by 7.7% from 2023.
- ✚ There were 11,294 crashes involving tractor-trailers in 2024.
- ✚ Fatalities resulting from tractor-trailer crashes decreased by 13.1% from 2023.
- ✚ There were 1,141 crashes involving school buses in 2024.
- ✚ Three school-age passengers on a school bus were killed in 2024, and 31 were injured.
- ✚ One school bus driver was killed in 2024, and 37 were injured.

2024 Illinois Crash Facts & Statistics

Registered Motor Vehicles By Type



Motor Vehicles Involved in Crashes

TYPE OF MOTOR VEHICLE	CRASH SEVERITY			VEHICLE OCCUPANTS	
	Fatal	Injury	Total	Killed	A-Injury
Passenger Car	740	71,843	338,617	440	3,810
Pickup Truck	195	8,652	43,728	86	519
SUV	327	23,078	109,834	140	1,037
Van	72	5,131	24,470	37	220
Other Single Unit Truck	37	1,463	9,252	9	38
Truck-Tractor with Semi-Trailer	98	1,905	12,184	15	64
Farm Tractor/Farm Equipment	4	74	275	3	9
School Bus	2	166	1,156	4	9
Other Bus	5	690	3,772	0	12
Motorcycle	148	2,446	3,444	144	928
Other or Unknown	101	3,415	30,639	45	174

Tractor-Trailer Crashes

There were 11,294 crashes involving tractor-trailers in Illinois in 2024. Tractor-trailer crashes account for 3.7% of total crashes.

Fatalities resulting from tractor-trailer crashes decreased by 13.1% from 2023 to 2024. The number of fatal crashes also decreased by 11.7%.

Injury crashes involving tractor-trailers account for 2.8% of all injury crashes. A-injuries account for 12.3% of all injuries in tractor-trailer crashes.

Total Crashes	11,294
Fatal Crashes	91
Injury Crashes	1,750
A-Injury Crashes	222
Property Damage Crashes	9,453
Vehicle Miles Traveled (Millions)	12,840

PEOPLE KILLED AND INJURED BY PERSON TYPE

PERSON TYPE	Fatality	A-Injury
Tractor-Trailer Occupants	15	64
Other Vehicle Occupants	83	210
Pedestrians	7	5
Pedalcyclists	0	5
Occupant of Non-Motor Vehicle	1	0
TOTAL	106	284

CRASHES BY TYPE OF ROAD BY CRASH SEVERITY*

TYPE OF ROAD	CRASH SEVERITY	
	Fatal	A-Injury
URBAN		
Freeway & Expressway/Toll	0	0
Interstate/Toll	32	55
Local Road or Street/Toll	0	6
Major Collector/Toll	0	6
Minor Arterial/Toll	2	16
Minor Collector	0	1
Other Principal Arterial/Toll	16	27
Unknown	0	0
Urban Total	50	111
RURAL		
Freeway & Expressway/Toll	0	1
Interstate/Toll	16	45
Local Road or Street	1	1
Major Collector	8	12
Minor Arterial	7	13
Minor Collector	0	0
Other Principal Arterial	9	18
Unknown	0	20
Rural Total	41	110

*There was one additional A-injury crash that occurred in an unknown location.

2024 Illinois Crash Facts & Statistics

School Bus Crashes

In 2024, there were 1,141 school bus crashes. These crashes account for less than 1% of the total crashes for the year.

Injury crashes involving school buses decreased by 6.8%, from 176 in 2023 to 164 in 2024. The number of injuries also decreased by 10.9%. A-injuries account for 7.3% of these injuries.

Total Crashes	1,141
Fatal Crashes	2
Injury Crashes	164
A-Injury Crashes	14
Property Damage Crashes	975
Urban Crashes	669
Rural Crashes	472

PEOPLE KILLED AND INJURED BY PERSON TYPE

PERSON TYPE	Fatality	A-Injury
School Bus Drivers	1	3
School Bus Passengers (School-Age)*	3	4
Other School Bus Passengers	0	2
Other Vehicle Occupants	6	9
Pedestrians (School-Age)*	0	0
Other Pedestrians	0	1
Pedalcyclists	0	0
Occupants of Non-Motor Vehicles	0	0
TOTAL	6	19

*School-Age = Children 5-19 years of age.

School Bus = Type 1 or Type 2.

CRASHES BY TYPE OF ROAD BY CRASH SEVERITY

TYPE OF ROAD	CRASH SEVERITY	
	Fatal	A-Injury
URBAN		
Local Road or Street	1	2
Major Collector	0	4
Minor Arterial	0	3
Minor Collector	0	0
Other Principal Arterial	0	0
Unknown	0	0
Urban Total	1	9
RURAL		
Local Road or Street	0	0
Major Collector	0	0
Minor Arterial	0	1
Minor Collector	0	1
Other Principal Arterial	1	0
Unknown	0	3
Rural Total	1	5

Motorcycle Crashes

Motorcycle crashes accounted for 1.1% of all crashes in 2024. The number of motorcyclists killed decreased by 14.3%, from 168 in 2023 to 144 in 2024. These motorcycle fatalities accounted for 12.2% of all fatalities in 2024. The number of motorcyclists injured – 2,556 – increased by 7.7% in 2024.

The figures below include motorcycles, motor scooters, motorbikes, mopeds and 3-wheeled motorcycles.

Total Crashes	3,361
Fatal Crashes	142
Injury Crashes	2,385
A-Injury Crashes	866
Motorcyclists Killed	144
Motorcyclists Injured	2,556
Motorcyclists with A-Injuries	928
Non-Motorcyclists Killed	5
Non-Motorcyclists Injured	193
Non-Motorcyclists with A-Injuries	31

MOTORCYCLES INVOLVED IN CRASHES BY TYPE OF MANEUVER

Motorcycle Maneuver	Motorcycles Involved
Going Straight Ahead	2,148
Avoiding Vehicle/Objects	92
Changing Lanes	69
Disabled	1
Diverging	1
Driving the Wrong Way	11
Enter From Drive/Alley	5
Enter Traffic Lane from Park	2
Leave Traffic Lane to Park	1
Merging	17
Negotiating A Curve	109
Parked	100
Passing/Overtaking	140
Skidding/Control Loss	215
Slow/Stop in Traffic	113
Starting in Traffic	19
Turning Left	154
Turning Right	104
U-Turn	4
Other	36
Unknown	103
TOTAL	3,444