

Welcome to Southern Illinois!
This map is one of nine bicycle maps for the State of Illinois. It covers the southernmost section of Illinois, as well as small portions of adjacent counties and states. Counties covered are Alexander, Franklin, Hamilton, Hardin, Gallatin, Jackson, Jefferson, Johnson, Massac, Perry, Pope, Pulaski, Saline, Union, White, and Williamson, as well as portions of adjacent counties. We hope you will find it helpful in planning your bicycle trip in or through Illinois. And while you are cycling, we invite you to stop and take in many of the scenic and historic wonders of this portion of our state. Enjoy your trip in our beautiful state.

The Terrain
More than any other feature, the Shawnee Hills distinguish southernmost Illinois from the rest of the state. The only other large area with terrain resembling the Shawnee region is the northwestern portion of Illinois around Galena. These two areas are the only unglaciated portions of Illinois. Millions of years ago, a great geological upheaval, combined with the pushing of material by glaciers to the north, produced the scenic and picturesque hills, valleys, and bluffs that make this land so unique. Further shaping of the land occurred from the action of wind and water, creating fantastic rock formations and carving gorges and canyons. Most of these formations and hills are within the boundaries of the Shawnee National Forest, Illinois' only national forest.

Lakes, Rivers, and Other Bodies of Water
Flowing Water and Waterfalls
Rivers and streams add to the scenery of the Shawnee country. The Big Muddy River carves a gorge through the western Shawnee area, while the Cache River meanders through swamps and cypress stands—great for canoeing. Dozens of other streams and creeks have helped carve out and shape the landscape. If you explore a bit, you may come across waterfalls in such areas as Pounds Hollow, Feme Clyffe, and Dixon Springs. Some waterfalls are intermittent, so the best time to see some of them is after a heavy rain.

Still Water
Southernmost Illinois also contains a number of lakes. The largest lake is Rend Lake, but there are many smaller lakes worth noting: Kincaid Lake with its spectacular views; Crab Orchard Lake, home to a variety of wildlife; Devil's Kitchen Lake and its scenic bluffs; and Horseshoe Lake with a large, graceful stand of bald cypresses. Most lakes offer boating and swimming—great ways to cool off after a hot bike ride. Still water in cypress country has a different kind of beauty. There is a peacefulness along the boardwalk that extends into the heart of the swamp at Heron Pond (in the Cache River State Natural Area). This same serenity can also be found at Horseshoe Lake near Cairo. This is a great place to get off your bike and enjoy a unique "southern" atmosphere under the canopy of bald cypress trees.

Canoeing
For a pleasant diversion from bicycling, take a canoe trip. The U.S. Forest Service recommends these rivers in and near Shawnee National Forest for canoeing (check the larger towns for canoe rental):
The Big Muddy River: 30 miles of spectacular cliffs, bluffs, and Little Grand Canyon. The Big Muddy starts near Murphysboro and empties into the Mississippi River.
The Cache River: a great place to view blue herons, the Cache winds south of the National Forest and eventually empties into the Ohio River just north of Cairo. Serene cypress swamps and forested lowlands surround much of the length of the Cache River.
The Saline River: this unusual river turns from brown to white at Eagle Creek due to a high sulf content. It flows into the Ohio River at the eastern boundary of the Shawnee.
The Ohio River: from the Saline River southeast to Cave-in-Rock and beyond. This stretch of the Ohio with a trip from the Saline River.

Trails
Most state parks contain trails of varying lengths from short interpretive trails to longer day hike and backpacking trails. Additionally, the Shawnee National Forest contains many recreational areas with a variety of trails. Longer trails also exist within the boundaries of the Shawnee. Although bicycles give you greater freedom to explore southern Illinois, some things can only be seen via a hiking or nature trail.
In recognition of Johnson County efforts to promote bicycling, the Illinois House of Representatives passed House Resolution No. 780 which designated Johnson County as the "Bicycling Capitol of Illinois".
If you wish for a change of pace—or to experience a scenic, historic, or natural feature up close, take a break and try a trail.

For More Information
In the upper right-hand corner of this side of the map are a number of addresses and telephone numbers you can contact for more information.
Enjoy your trip!

Plants and Animals
Southernmost Illinois is blessed with a wide variety of native plants and animals—many of them, that in part, inhabit the Shawnee National Forest and many county, state, and federal public lands. Here you will find a variety of northern species found elsewhere in the state, as well as many southern species such as the bald cypress whose northern limit falls here. Plant and animal species are most concentrated in the many other natural areas administered by the Illinois Department of Natural Resources.

Plants
Southernmost Illinois' mild climate and wide variety of ecological niches are responsible for the abundance of a broad spectrum of plant life. It is here that north meets south. Many of the trees found in the rest of Illinois are found here: oaks, maples, beeches, and ashes along with the northern extension of southern varieties such as the bald cypress, tupelo, and rock pine.
Although forests dominate, there are many wetlands along streams. Higher areas such as knobs and hills may be dry enough to support grasslands. In between is a spectrum of trees, woody plants, and other flora ranging from drier loving black and blackjack oaks to water-loving willows and cottonwoods. In larger towns, you will find the Southern Magnolia, a graceful broadleaf evergreen with beautiful white flowers that bloom all summer. The Southern Magnolia is not native to this area; it has been transplanted out of its native area from parts farther south.

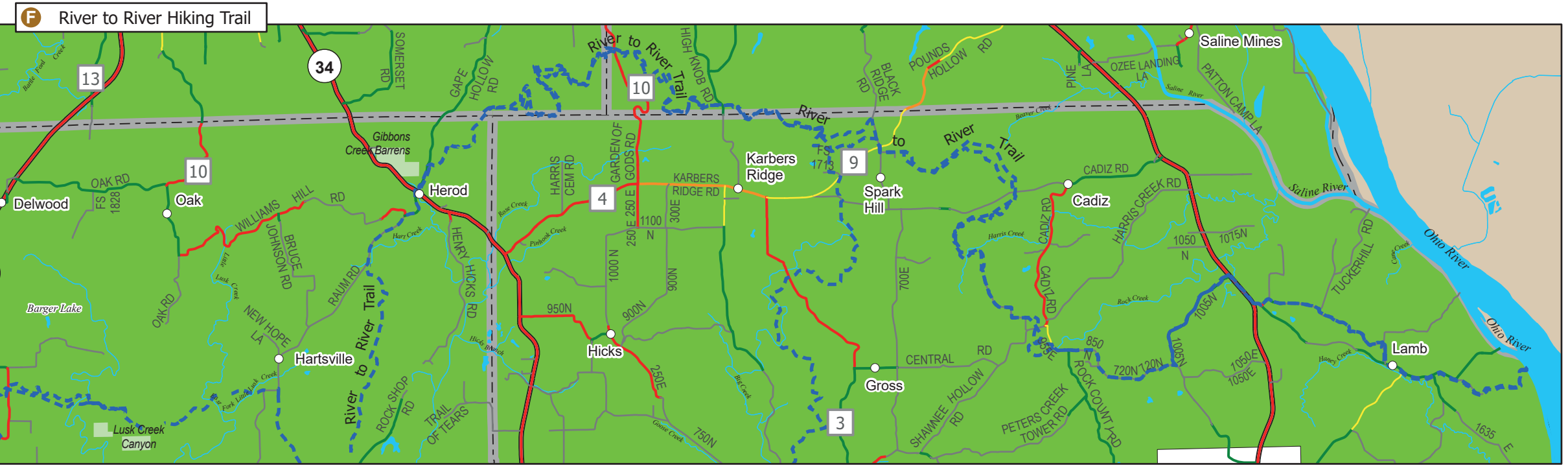
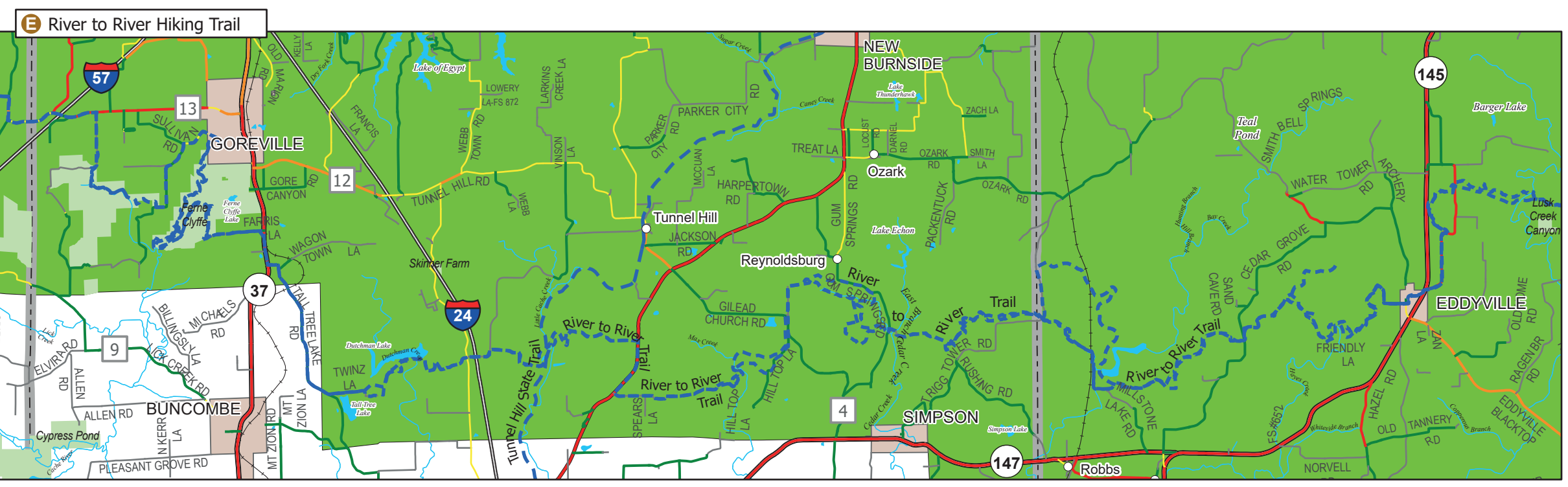
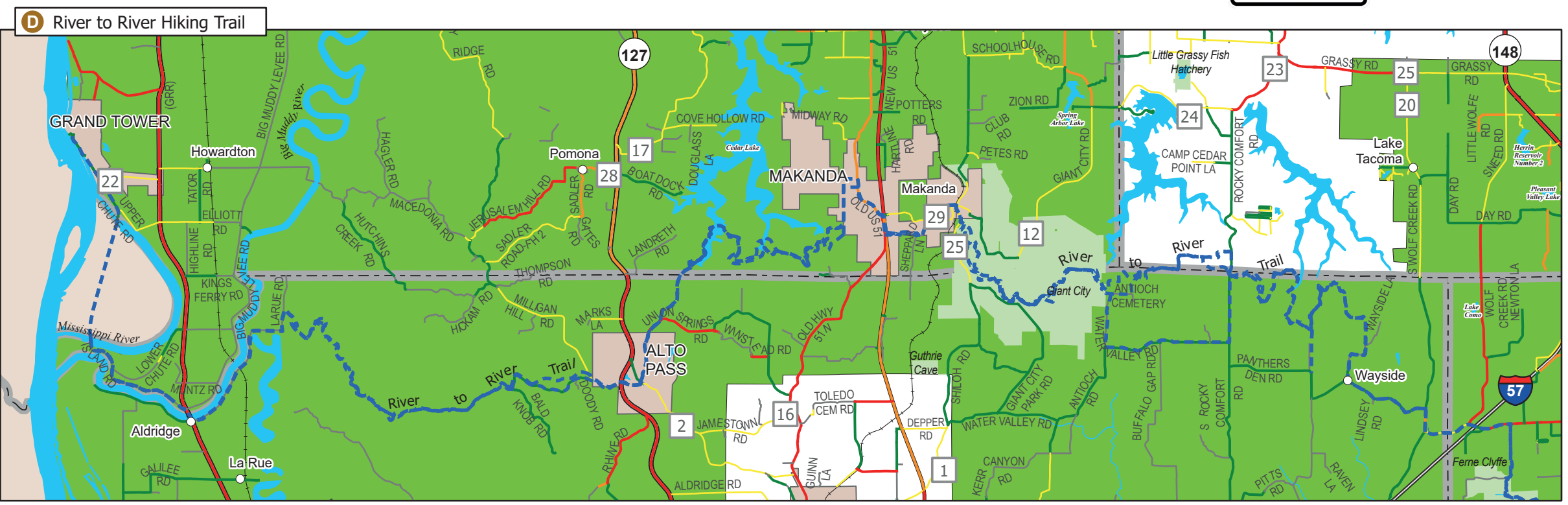
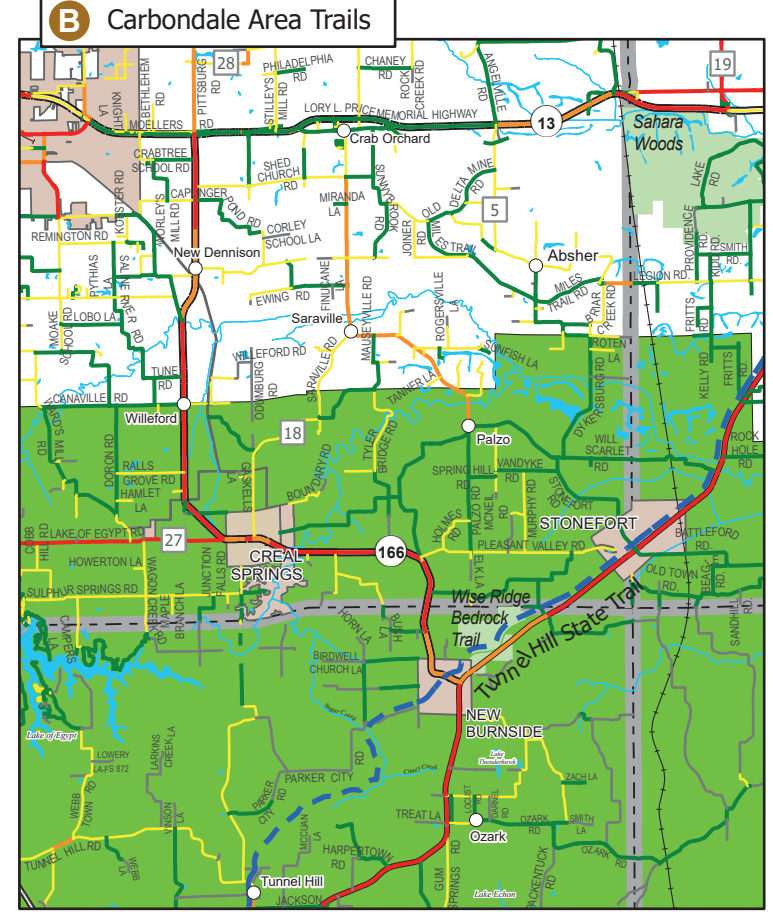
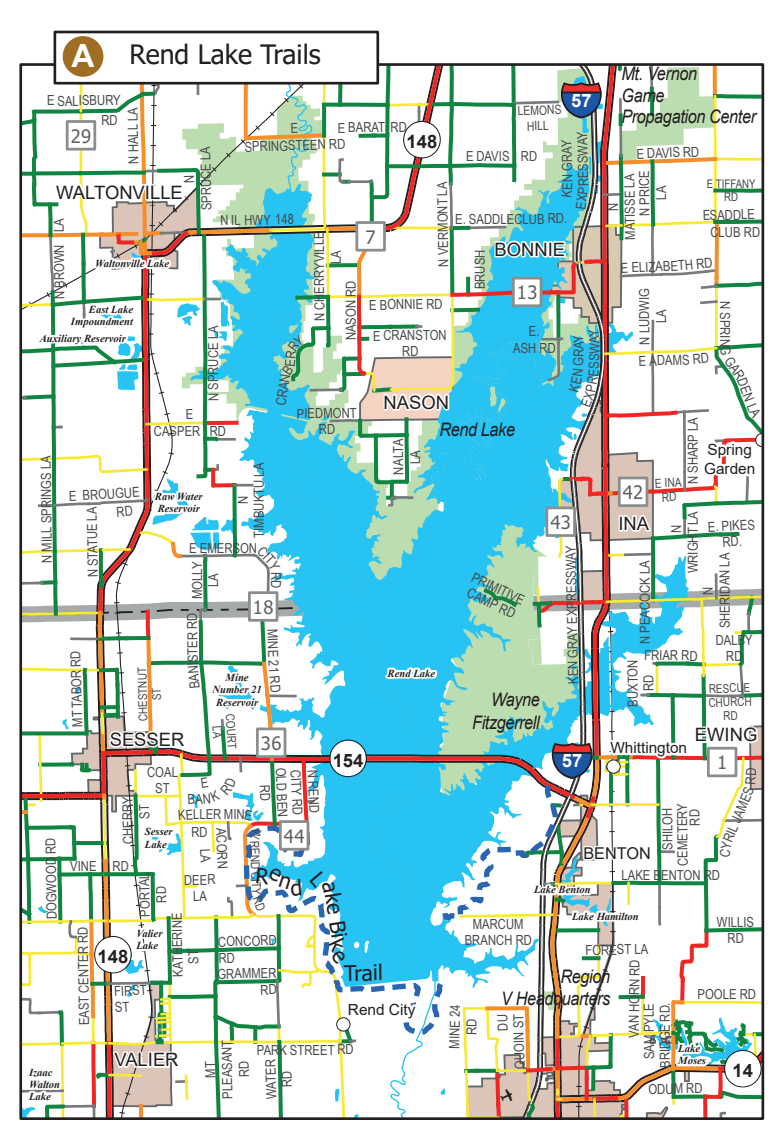
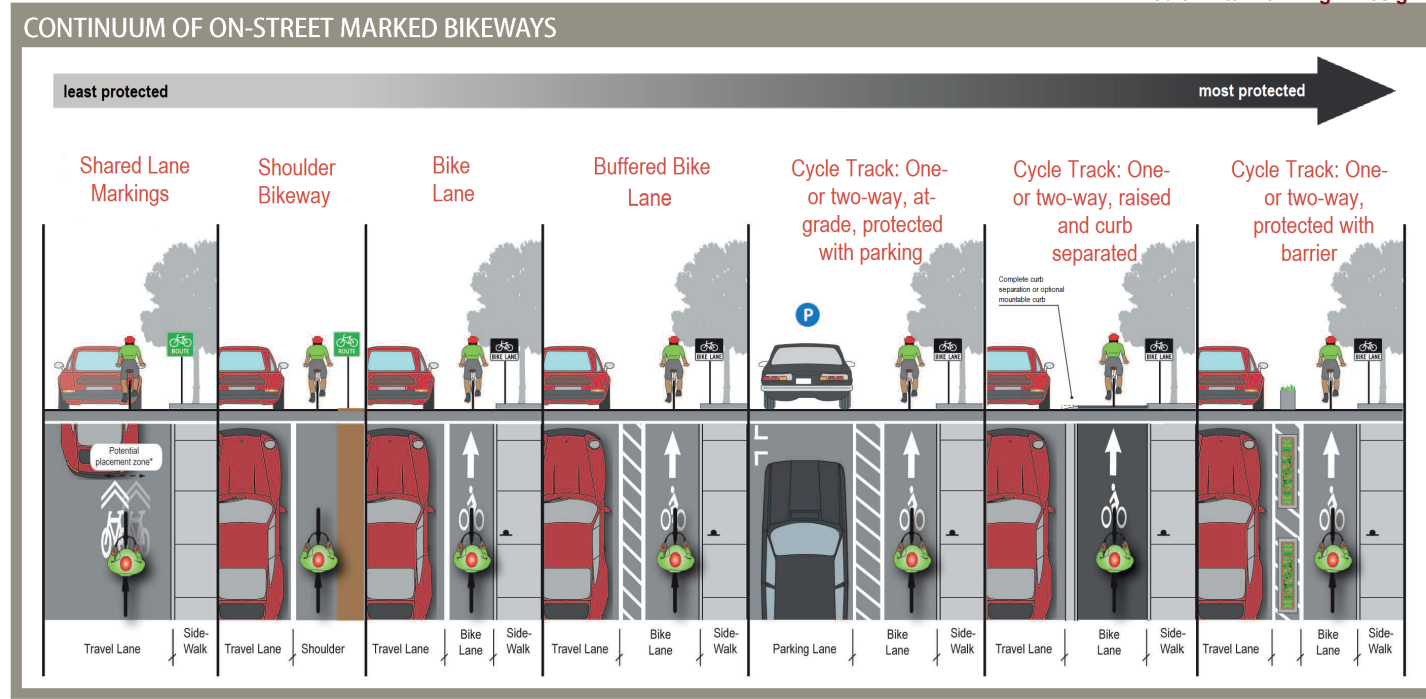
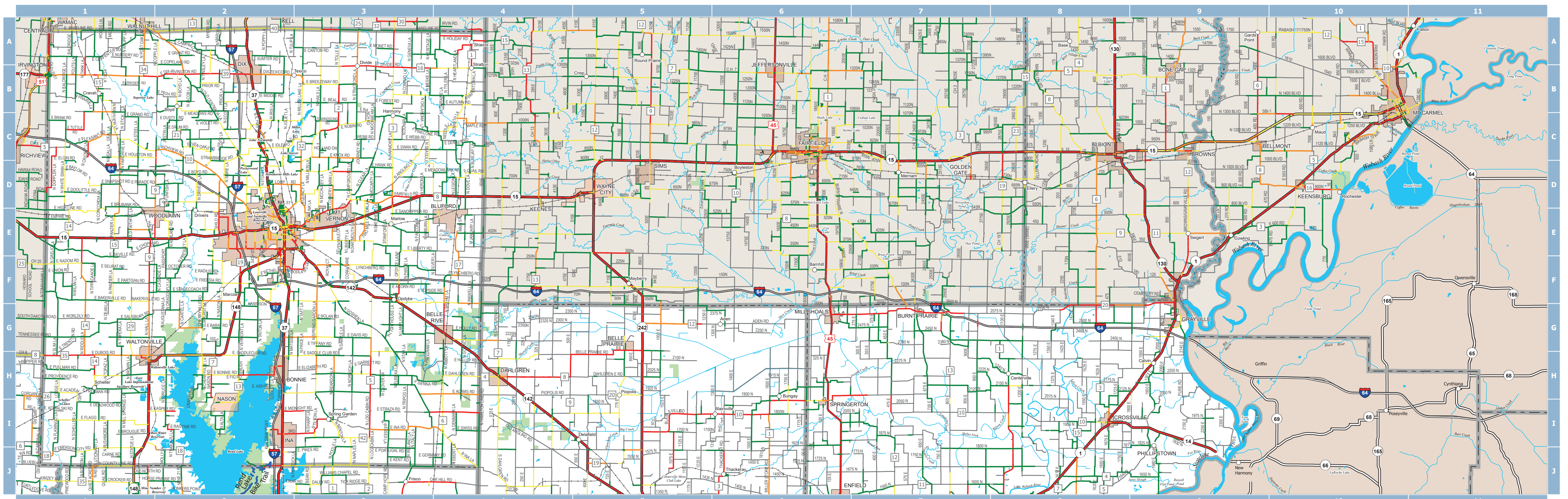
Animals
Reptile species include three poisonous snakes: the cottonmouth, the timber rattlesnake, and the water moccasin. Be watchful of them. If you see one, leave it alone. If you don't bother them, they will usually leave you alone, too. There are many varieties of nonpoisonous snakes as well. Other reptiles and amphibians inhabiting the area include many varieties of frogs such as the green tree frog.
Bird lovers will enjoy the variety of rare species not found anywhere else in the state. Herons, including such rare species as the blue heron and the yellow-crowned night heron visit swamp lands. Flying overhead are black turkey vultures, bald eagles during winter, and many kinds of hawks. Canada geese also winter here—more than a half million according to the U.S. Forest Service. Thanks to excellent wildlife management, there are increasing numbers of wild turkeys.
Of course there are an abundance of mammals: deer, squirrels, raccoons, opossums, as well as others. Pope County is especially known for its large numbers of deer.

If you are camping and want to catch your dinner, you are in the right place. Under the water, fish abound. Bass and other game fish are found in many of the lakes, while channel catfish, gar, and other river fish inhabit the Mississippi, Ohio, Big Muddy, and Saline Rivers.

Shawnee National Forest & Other Federal Sites
The Shawnee National Forest is the largest federal holding in southern Illinois. Although much of the forest is privately owned, there are many public areas for hiking and other outdoor recreation. Mountain Biking is allowed on many national forest trails. For more information contact the Forest Supervisor's Headquarters.

Trails
Most state parks contain trails of varying lengths from short interpretive trails to longer day hike and backpacking trails. Additionally, the Shawnee National Forest contains many recreational areas with a variety of trails. Longer trails also exist within the boundaries of the Shawnee. Although bicycles give you greater freedom to explore southern Illinois, some things can only be seen via a hiking or nature trail.
In recognition of Johnson County efforts to promote bicycling, the Illinois House of Representatives passed House Resolution No. 780 which designated Johnson County as the "Bicycling Capitol of Illinois".
If you wish for a change of pace—or to experience a scenic, historic, or natural feature up close, take a break and try a trail.

For More Information
In the upper right-hand corner of this side of the map are a number of addresses and telephone numbers you can contact for more information.
Enjoy your trip!



Important Addresses and Phone Numbers Emergencies - Dial 911

- Amtrak**
1-800-USA-RAIL. www.amtrak.com
- Bicycle Clubs, Literature, and Advocacy Groups**
National Center for Bicycling & Walking (NCBW)
NCBW is a resident program at Project for Public Spaces, Inc. NCBW was established in 1977, as the Bicycle Federation of America, Inc. NCBW's mission is to create bicycle-friendly and walkable communities. www.bikewalk.org
email: info@bikewalk.org
Active Transportation Alliance, 35 E. Wacker Dr, Suite 1782, Chicago, IL 60601, 312-427-3325. The mission of Active Transportation Alliance is to advocate for walking, bicycling, and public transit to create healthy, sustainable and equitable communities. www.activetrans.org
League of America Bicyclists, 1612 K Street NW, Suite 1102, Washington, DC 20006, 202-822-1333.
Mission: To lead the movement to create a Bicycle Friendly America for everyone. As leaders, our commitment is to listen and learn, define standards, and share best practices to engage diverse communities and build a powerful, unified voice for change. www.bikeleague.org
Ride Illinois, 815 Leicester Rd #314, Elk Grove Village, IL 60007, 630-216-9282. The statewide bike advocacy organization works for bike-friendly roads and trails, for favorable legislation, and to educate cyclists and motorists. www.rideillinois.org
- Bus Service**
Greyhound, 800-231-2222. www.greyhound.com
- Campgrounds, Public**
Illinois Department of Natural Resources, Division of Land Management, One Natural Resources Way, Springfield, IL 62702-1271, 217-782-4302. www.dnr.illinois.gov
- Department of Natural Resources (State Parks and Recreation Areas)**
Office of Public Services, One Natural Resource Way, Springfield, IL 62702-1271, 217-782-7454. www.dnr.illinois.gov
- Hiking Opportunities**
Illinois Department of Natural Resources, Office of Public Services, One Natural Resource Way, Springfield, IL 62702-1271, 217-782-6302. www.dnr.illinois.gov
email: dnr.parksadmin@illinois.gov
- Historic Agencies/Organizations**
Illinois Historic Preservation Agency, #1 Old State Capitol Plaza, Springfield, IL 62701-1507, (217) 785-7930. www2.illinois.gov/dnr/historic/Pages/default.aspx
- State Police**
District 13
1391 S. Washington Street, DuQuoin, IL 62832, 618-542-2171
Counties Served: Franklin, Jackson, Jefferson, Perry, Randolph, Washington, Williamson
District 19
919 Illinois Route 14, Carmi, IL 62821, 618-382-4606. Counties served: Edwards, Gallatin, Hamilton, Saline, Wabash, Wayne, White
District 22
1154 Shawnee College Rd., Ullin, IL 62992, 618-845-3740. Counties Served: Alexander, Hardin, Johnson, Johnson, Massac, Pope, Pulaski, Union
Tourist Information:
Illinois Tourism Bureau, 1-800-2CONNECT, <http://www.enjoyillinois.com/>
e-mail: ceo.enjoyillinois@illinois.gov
Carbondale Convention and Tourism Bureau, Saluki Plaza, 815 South Illinois Ave., Carbondale, IL 62901 800-526-1500. www.ctcb.org e-mail: ctcb@neonds.com
Southernmost Illinois Tourism Bureau, P.O. Box 378, Anna, Illinois 62906, 800-248-4373. www.southernmostillinois.com
Williamson County Tourism Bureau, 1602 Sioux Dr, Marion, IL 62959, 800-433-7399. www.visitsi.com e-mail: Info@wctb.org
- Road Conditions (Winter) Road Construction (Spring/Summer/Fall)**
1-800-452-4368. <https://dot.illinois.gov/home/Comm/emergency-road-closures>
- Secretary of State (Bicycle education/safety)**
Illinois Secretary of State, Driver Services Department, Traffic Safety Division, 2701 S. Dirksen Pkwy., Springfield, IL 62723, 217-782-6212. https://ilsos.gov/departments/drivers/traffic_safety/bikepededsafety.html
- Shawnee National Forest**
Shawnee National Forest, 50 Hwy. 145 S., Harrisburg, IL 62946, (618) 253-7114. www.fs.usda.gov/shawnee e-mail: mailroom@shawnee@fs.fed.us
- State Agencies**
Illinois Department of Natural Resources, Office of Public Services, One Natural Resources Way, Springfield, IL 62702-1271, 217-782-6302. www.dnr.illinois.gov
Illinois Department of Transportation, 2300 S. Dirksen Pkwy., Springfield, IL 62764, 217-782-7820.
Illinois Historic Preservation Agency, #1 Old State Capitol Plaza, Springfield, IL 62701-1507, (217)782-4836. www2.illinois.gov/dnr/historic/Pages/default.aspx (indicate Division or Office), 801 South Seventh Street (indicate Suite Number), Springfield, IL 62703. www.isp.illinois.gov e-mail: askisp@isp.state.il.us
Illinois Secretary of State, Driver Services Department, Traffic Safety Division, 2701 S. Dirksen Pkwy., Springfield, IL 62723, 217-782-6212. https://www.ilsos.gov/departments/drivers/traffic_safety/home.html

MAP 2 LEGEND

BIKE ROUTES	ROUTE MARKERS
WIDE BUFFER FOR BICYCLES	INTERSTATE ROUTE MARKER
CAUTION ADVISED	U.S. ROUTE
NOT RECOMMENDED FOR BICYCLING	STATE ROUTE
BICYCLE PROHIBITED	COUNTY ROUTE
SHARED, OLD-STYLE, SINGLE LANE SURFACE	COUNTY ROUTE MARKER
UNINCORPORATED TOWN	
GENERAL AVIATION AIRPORT	
RAILROAD	
WATER	
COUNTY BOUNDARY	
TOWN	
STATE PARK & WILDLIFE AREA	
NATIONAL FOREST	
TRAIL	

0 0.5 1 2 3 4 5 0.75 1.5 3 4.5 6 7.5 9
Miles Kilometers

COPYRIGHT © 2023 BY STATE OF ILLINOIS
Printed by the Authority of the State of Illinois, 1522, 2500

Tunnel Hill State Trail