

# IL 154 AT REND LAKE – PROJECT LOCATION



# PURPOSE OF VIRTUAL PUBLIC MEETING



- Show why the bridge that carries IL Route 154 at Rend Lake needs to be replaced.
- Provide information about:
  - Existing conditions of the IL Route 154 bridge
  - Addition of a multi-use path
- Receive input from the public.
- Inform the public of the project schedule.



# PROJECT DESCRIPTION



**This study has taken a detailed look at options for:**

- Raising the bridge to allow for different types of boating
- Resurfacing of the IL Route 154
- Addition of a secured multi-use path along the south side of IL Route 154



# PURPOSE & NEED FOR THE PROJECT



## The purpose and need for the replacement of the IL Route 154 bridge is due to:

- Condition of structure
- Rising and continual cost of maintenance
- Lack of pedestrian & biking mobility
- Enhance safety along the corridor

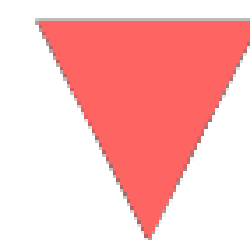


# PROJECT DEVELOPMENT & FUNDING



IDOT has a three-phase project development process, as shown on the timeline graphic below. The IL Route 154 Bridge Replacement includes funds to conduct Phase I, which provides the support for determining a preferred option. During this phase the proposed geometry, environmental concerns, and proposed right-of-way are identified.

**WE ARE  
HERE**



*\*All three phases are currently included in IDOT'S FY 2023-2028 Proposed Highway Improvement Program*



## What is considered during a Phase I Study in the Development of Alternatives?

### Engineering Feasibility

- Traffic Flow
- Geometrics
- Safety
- Access
- Mobility

### Community Characteristics

- Displacements
- Business Impacts
- Schools
- Multi-Use Paths
- Parks

### Environmental Impacts

- Biological Resources
- Cultural Resources
- Noise
- Special Waste

### Economic Development

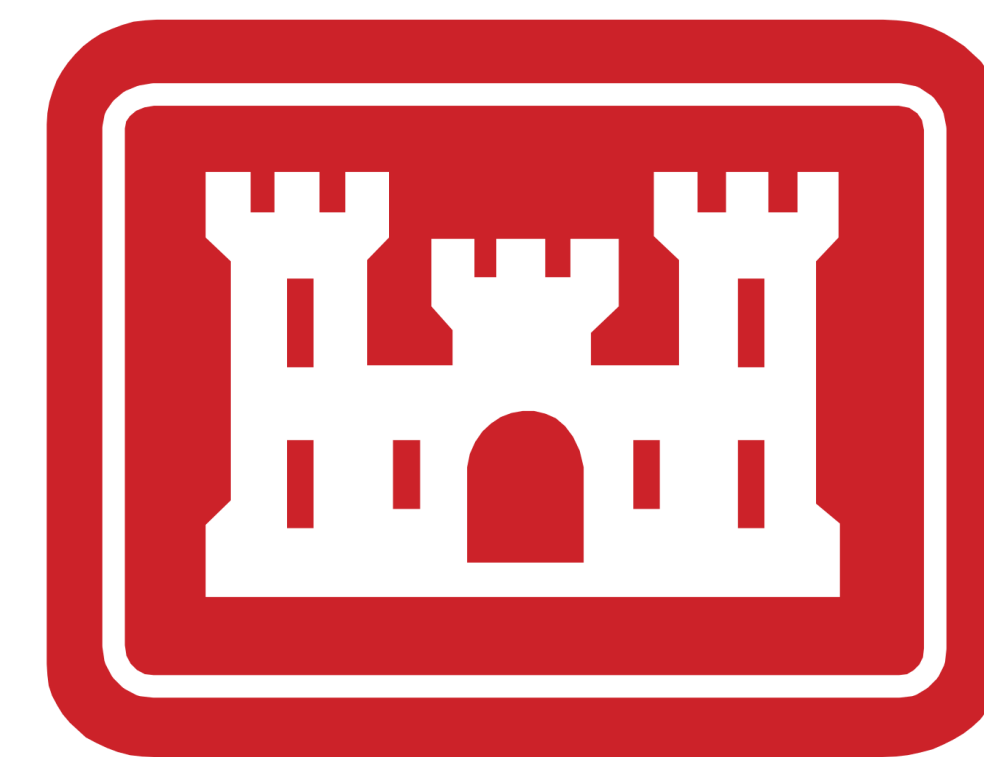
- Does the project promote economic development opportunities?
- Is the project compatible with local projects?

**PUBLIC  
INPUT**

# IL 154 STAKEHOLDER COORDINATION



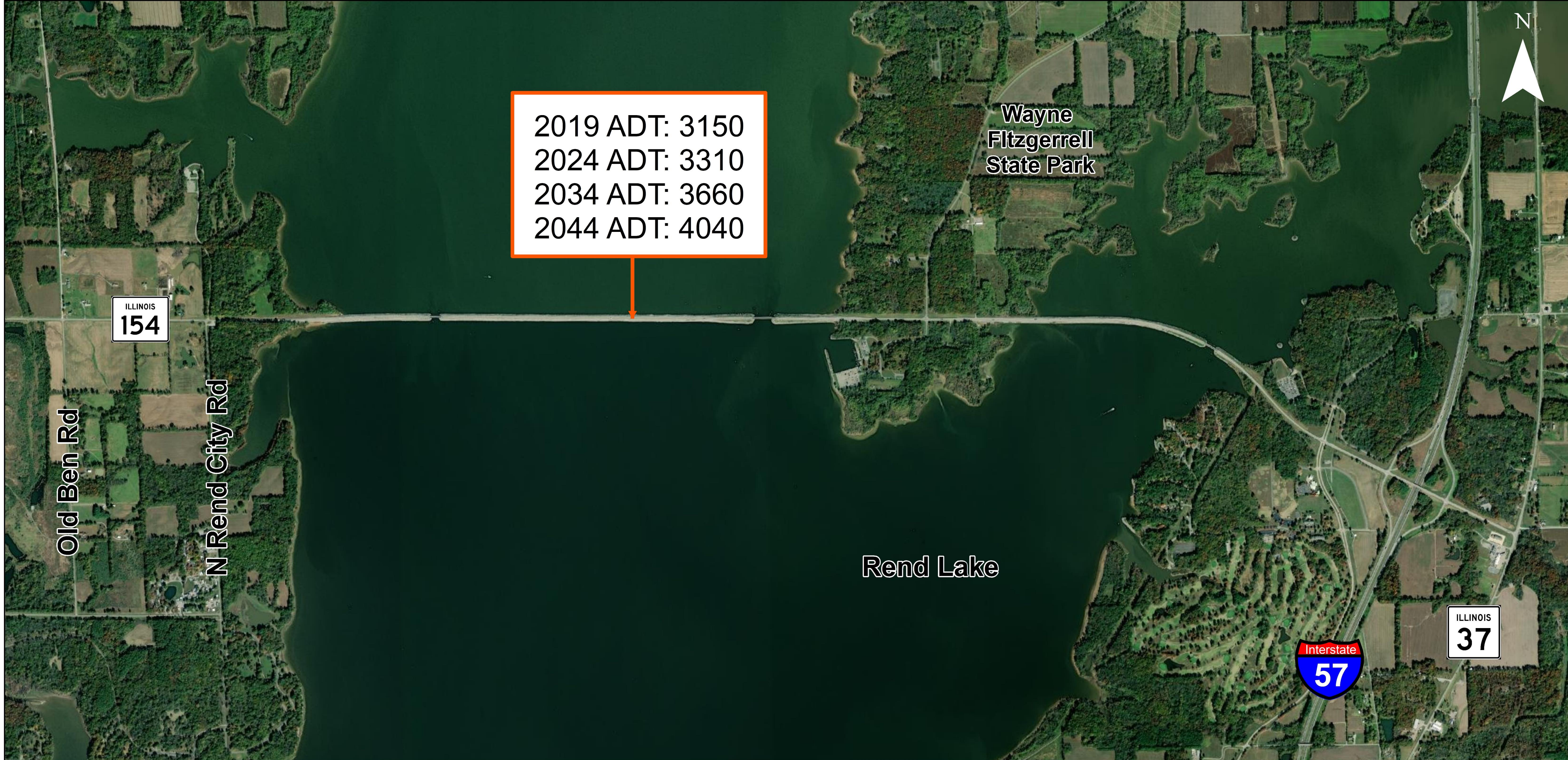
IDOT has coordinated the planning of this project with the following:



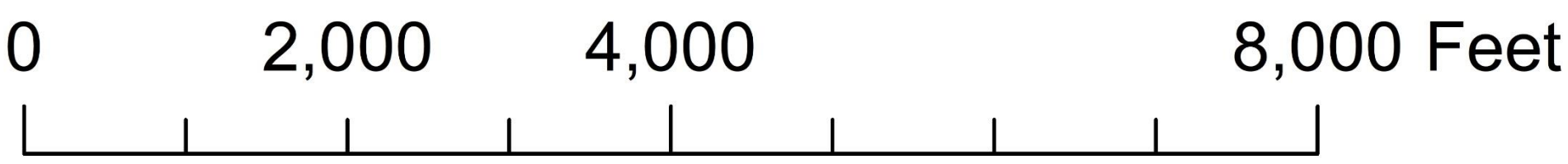
**US Army Corps  
of Engineers.**



# IL ROUTE 154 - EXISTING & PROJECTED TRAFFIC VOLUMES



Average Daily Traffic (ADT)





# CRASH PATTERNS ALONG IL ROUTE 154 (2014-2019)



## IDOT conducted a six-year crash study

*23 crashes occurred in the years studied:*

- Zero resulted in fatalities
- Four of these crashes resulted in severe injuries
- The majority of the crash types were 'Animal' collisions

CRASH TYPE (2014-2019) IL Route 154	%
Animal	39.13%
Rear End	30.43%
Fixed Object	13.04%
Turning	13.04%
Sideswipe Opposite Direction	4.34%

# CRASH EXHIBIT



### Injury Type Classifications:

- Type K is a fatality in which at least one person dies within 30 days of the crash.
- Type A is an injury in which is considered an incapacitating injury.
- Type B is an injury in which is considered a non-incapacitating injury.
- Type C is a possible injury but not evident.
- Type PD is Property Damage

### Legend

#### Crash Type, Injury Type (Number of Crashes)

- |                              |  |
|------------------------------|--|
| ● Animal, PD (9)             | △ Rear End, C-Injury (2)               |
| ■ Fixed Object, A-Injury (2) | ▲ Rear End, PD (4)                     |
| ■ Fixed Object, PD (1)       | ◆ Sideswipe Opposite Direction, PD (1) |
| ▲ Rear End, B-Injury (1)     | ◇ Turning, A-Injury (1)                |
|                              | ◇ Turning, PD (2)                      |

# MULTI-USE PATH

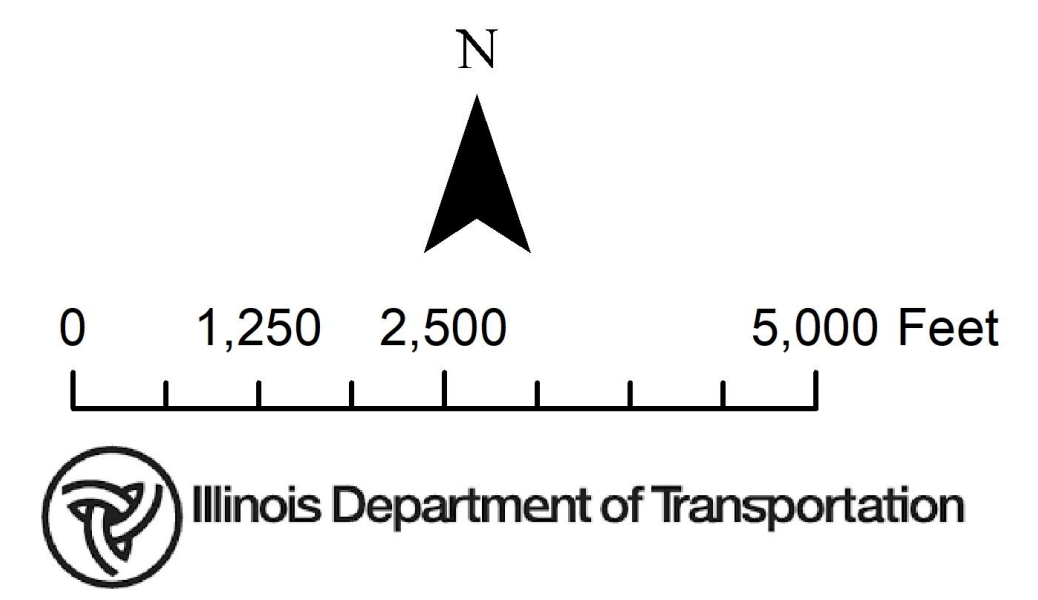


**Legend**

- Churches
- Cemetery
- Landmarks
- Boat Ramps
- State T&E Species
- Multi-Use Paths
- Limit of Construction
- Proposed Multi-Use Path
- Park
- County

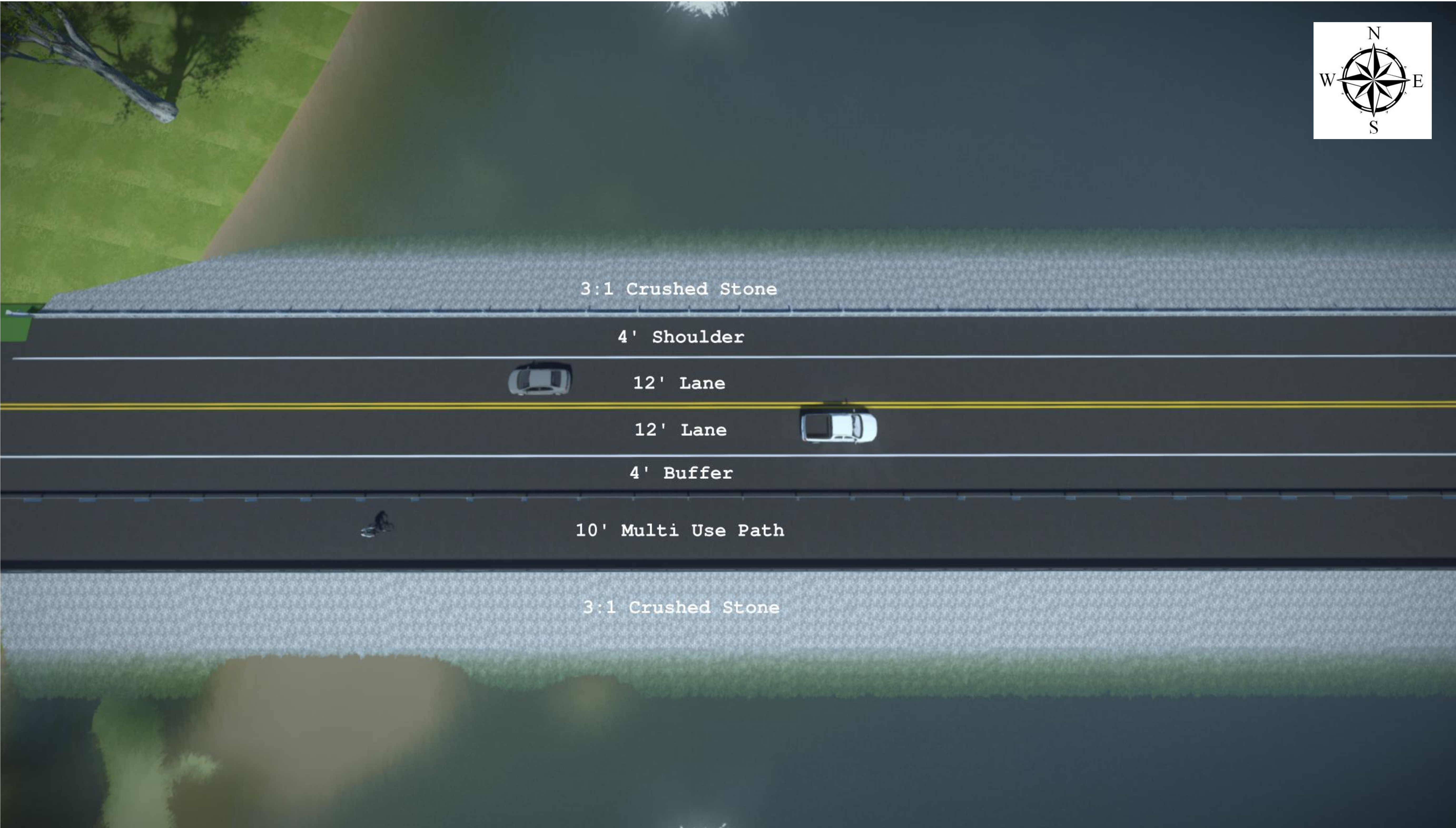
**Wetlands**

- River and Streams
- Freshwater Emergent Wetland
- Freshwater Forested/Shrub Wetland

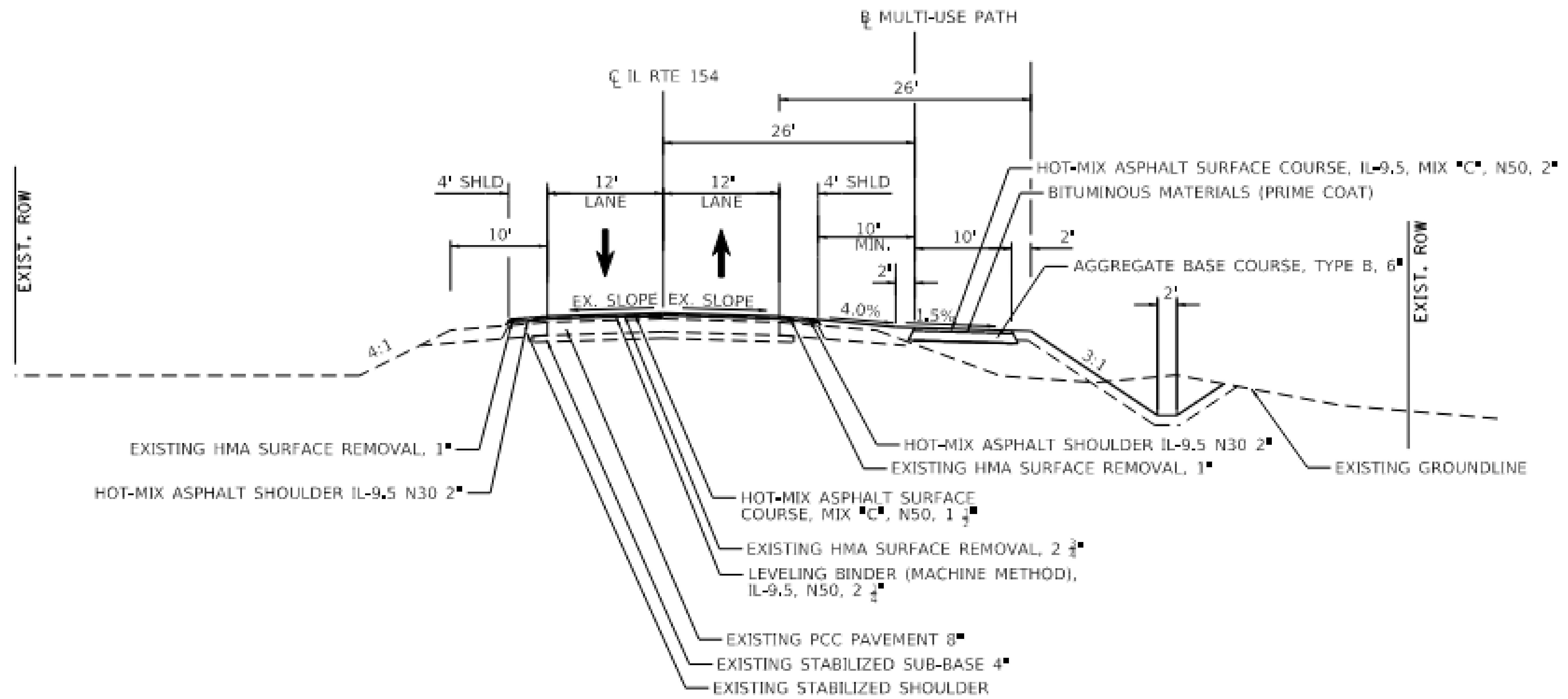


- The multiuse path will connect to the current path that terminates just North of IL 154 on the East side of Fitzgerald Park Dr.
- It then crosses IL 154 just east of the intersection of IL 154 and Fitzgerald Park Drive.
- From this point, it runs parallel to IL 154 on the south side, crossing the causeway and the bridge.
- About 650' east of Larry Foster Parkway, the multiuse path veers south at an angle of about 30 degrees then runs parallel to Larry Foster Parkway. The path crosses the Southern Illinois Arts and Crafts Entrance.
- It then turns East, crossing Larry Foster Parkway and connects to the existing path that continues South from that point.

# PROPOSED MULTI-USE PATH ALONG IL ROUTE 154



# TYPICAL SECTION OF PROPOSED IMPROVEMENT



**PROPOSED TYPICAL SECTION**  
 ILLINOIS ROUTE 154  
 STA 311+79.34 TO STA 317+26.93

# PROPOSED IMPROVEMENTS – PAGE 1 OF 4



**Preliminary Plans**  
 IL Route 154  
 Over Rend Lake  
 IL 154 from  
 Fitzgerald Park Dr  
 to Larry E Foster Pkwy

**Legend**

- Bike Path
- Centerline
- Property Line
- Existing ROW
- Proposed ROW
- Proposed Construction Limits
- Proposed Bridge Replacement
- Acreage Outside of Existing ROW

Total Acreage Impacts	
- IDNR Property:	0.342 Acres
- Army Corps Property:	3.535 Acres

Page 1 of 4



# PROPOSED IMPROVEMENTS – PAGE 2 OF 4



## Preliminary Plans

IL Route 154  
Over Rend Lake  
IL 154 from  
Fitzgerrell Park Dr  
to Larry E Foster Pkwy

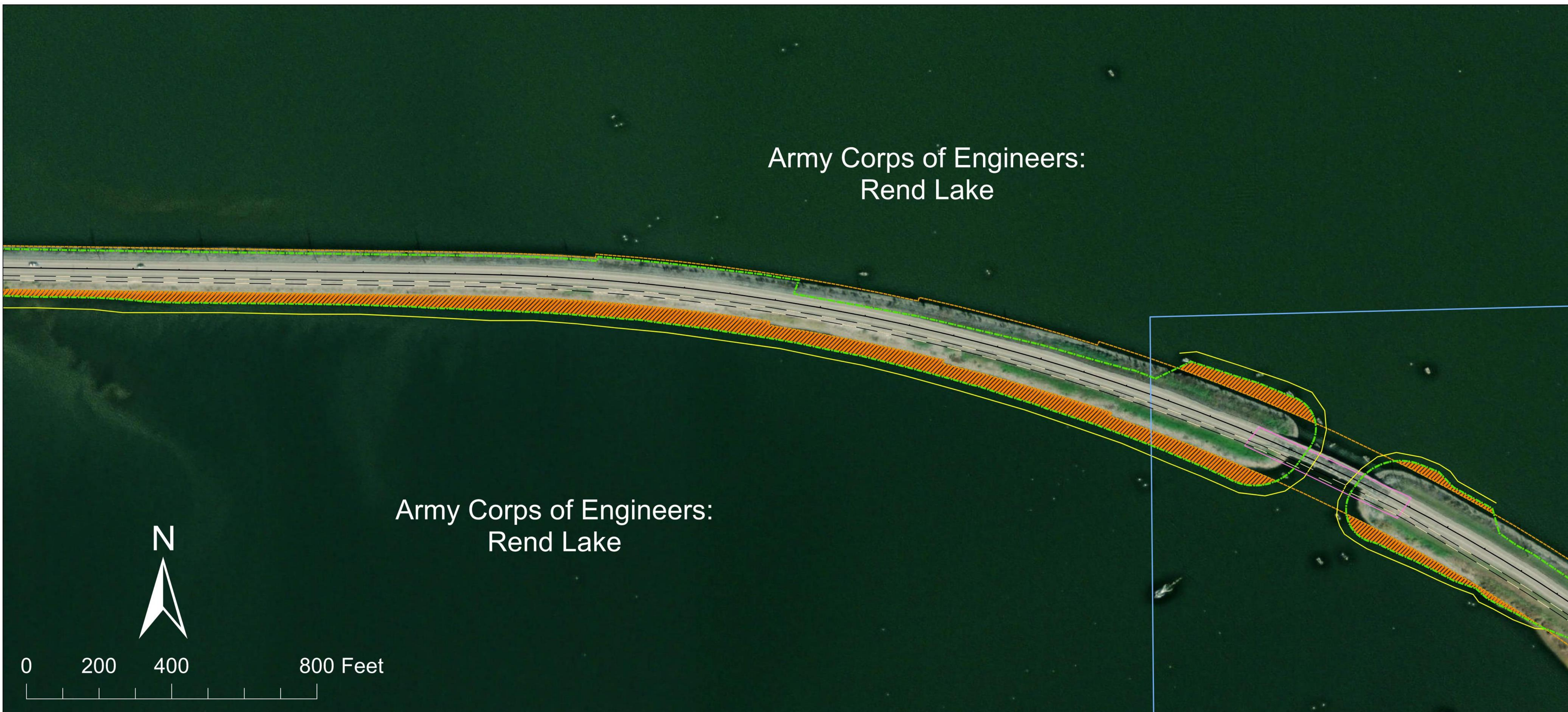
### Legend

- Bike Path
- Centerline
- Property Line
- Existing ROW
- Proposed ROW
- Proposed Construction Limits
- Proposed Bridge Replacement
- Acreage Outside of Existing ROW

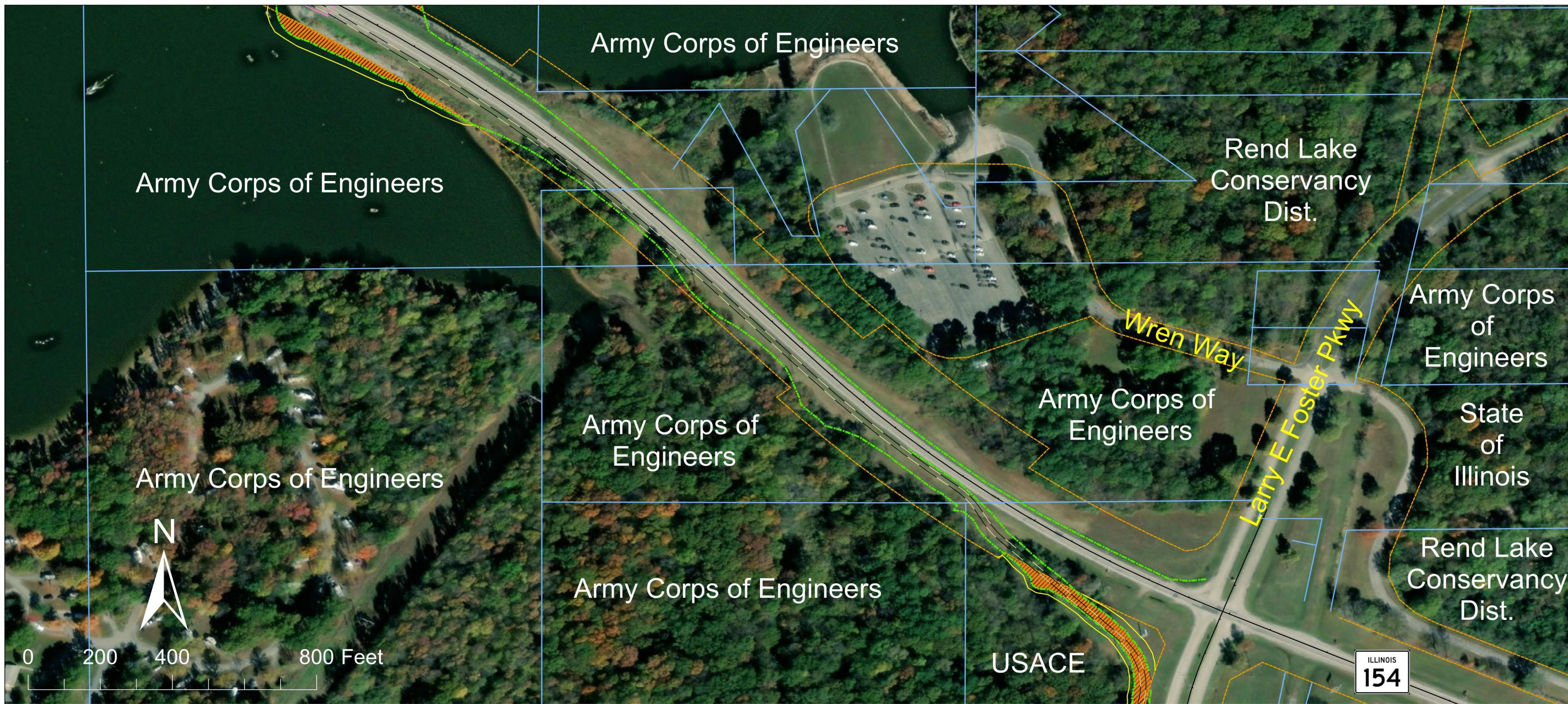
#### Total Acreage Impacts

- IDNR Property: 0.342 Acres
- Army Corps Property: 3.535 Acres

Page 2 of 4



# PROPOSED IMPROVEMENTS – PAGE 3 OF 4



## Preliminary Plans

IL Route 154  
Over Rend Lake  
IL 154 from  
Fitzgerrell Park Dr  
to Larry E Foster Pkwy

### Legend

- Bike Path
- Centerline
- Property Line
- Existing ROW
- Proposed ROW
- Proposed Construction Limits
- Proposed Bridge Replacement
- Acreage Outside of Existing ROW

#### Total Acreage Impacts

- IDNR Property: 0.342 Acres
- Army Corps Property: 3.535 Acres

Page 3 of 4





# PROPOSED IMPROVEMENTS – PAGE 4 OF 4



**Preliminary Plans**  
 IL Route 154  
 Over Rend Lake  
 IL 154 from  
 Fitzgerald Park Dr  
 to Larry E Foster Pkwy

**Legend**

- Bike Path
- Centerline
- Property Line
- Existing ROW
- Proposed ROW
- Proposed Construction Limits
- Proposed Bridge Replacement
- Acreage Outside of Existing ROW

Total Acreage Impacts	
- IDNR Property:	0.342 Acres
- Army Corps Property:	3.535 Acres



# SECTION 4(f)



- This project will include impacts to Rend Lake Recreation Area and Wayne Fitzgerald State Recreation Area. As such, it is subject to protection under Section 4(f) of the US Department of Transportation Act of 1966.
- For this project, IDOT received a preliminary section 4(f) “de minimis” impact finding from the Federal Highway Administration based on a determination that the project will not adversely affect the features, attributes, or activities that qualify these recreational areas for protection under section 4(f).
- Effects of the recreational areas will include the construction of a multi-use bicycle and pedestrian path and embankment in Rend Lake to widen the IL 154 causeway across Rend Lake between Fitzgerald Park Drive and Larry Foster Parkway.
- Mitigation will include improved access for alternative modes of transportation to the recreational areas.
- This virtual public meeting will provide an opportunity for the public to provide comments on the effects of the project on the recreational areas.

# WILL THERE BE A CLOSURE?



- IL 154 will remain open to through traffic during construction
- Construction will be staged with the installation of a temporary traffic signal.



# WE NEED YOUR INPUT!



**Your input will be used to understand how the project route is used by the community and what concerns you may have regarding the design and construction.**

**You can help us by submitting a comment via the website by**  
**July 31, 2023.**



***THANK YOU FOR  
YOUR INPUT!!!!!!***