

ILLINOIS RAILROAD MAP

2021

PREPARED BY THE
ILLINOIS DEPARTMENT OF TRANSPORTATION
OFFICE OF PLANNING AND PROGRAMMING

IN COOPERATION WITH
ILLINOIS COMMERCE COMMISSION



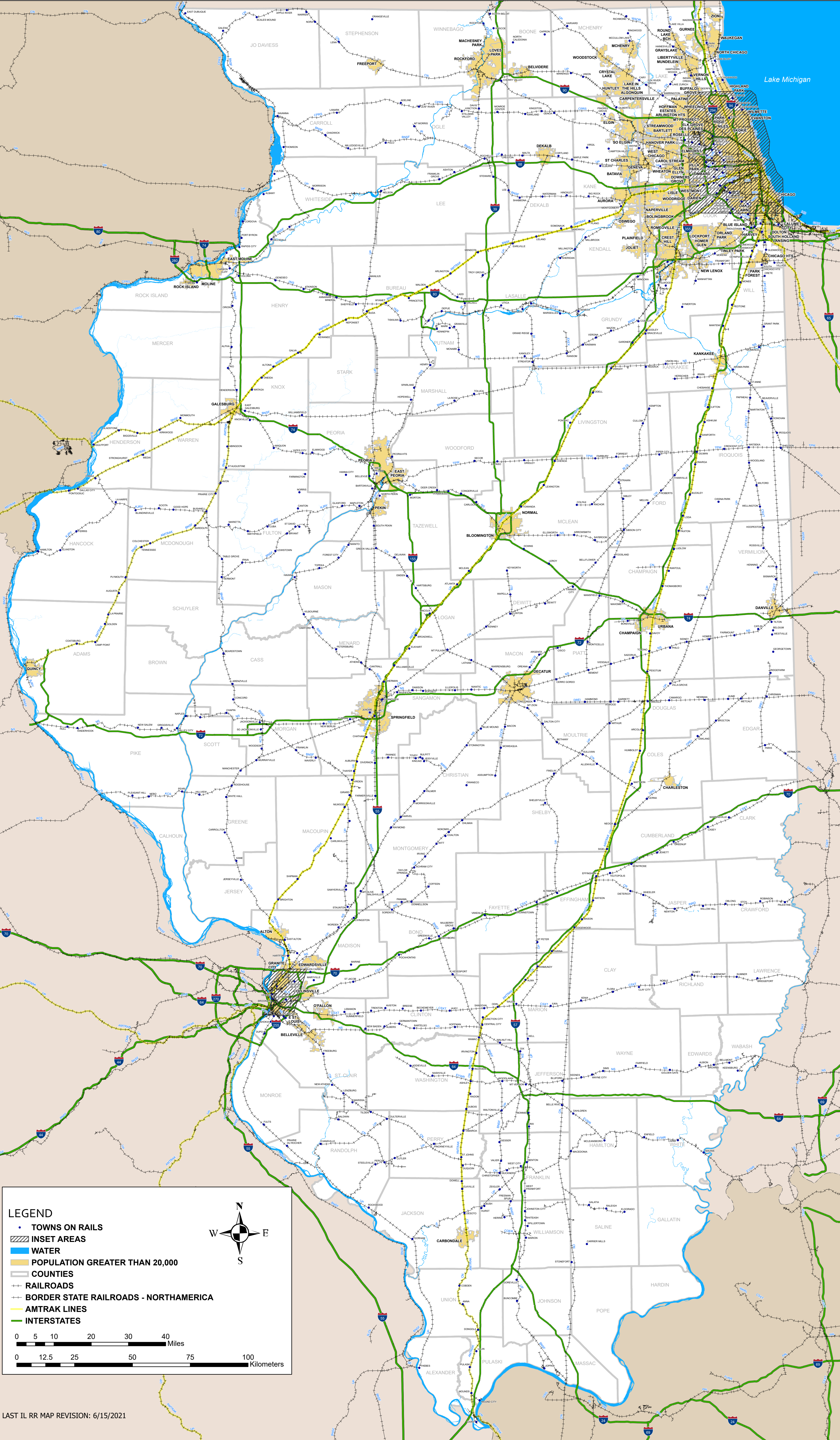
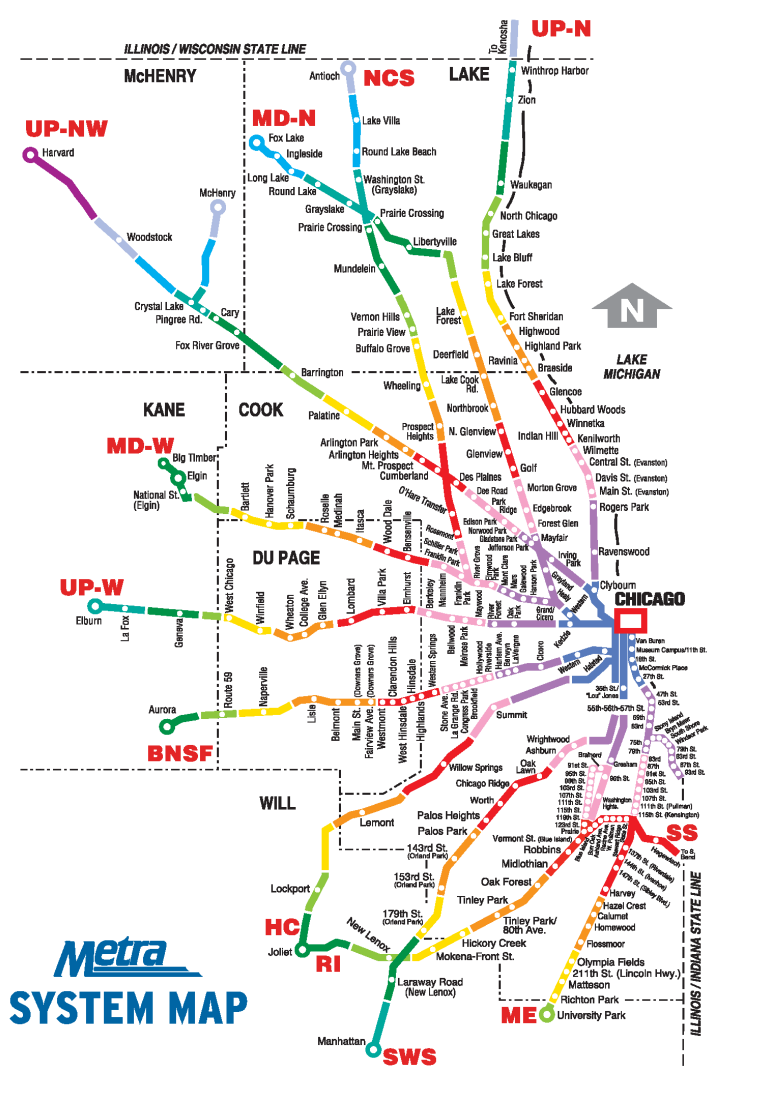
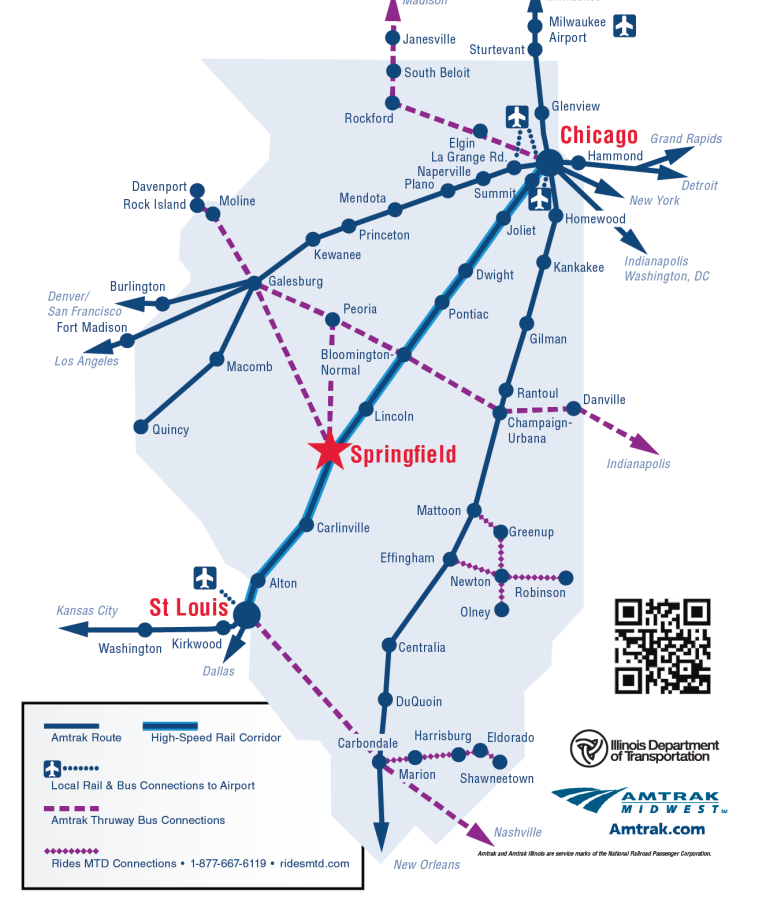
DATA SOURCES:
ILLINOIS DEPARTMENT OF TRANSPORTATION
ILLINOIS COMMERCE COMMISSION 2010
UNITED STATES DEPARTMENT OF TRANSPORTATION
UNITED STATES GEOLOGICAL SURVEY
USGS NATIONAL ATLAS - (HTTP://NATIONALATLAS.GOV)

THE ILLINOIS DEPARTMENT OF TRANSPORTATION'S MAPS USE DATA FROM EXTERNAL ELECTRONIC SOURCES THAT ARE NOT CONTROLLED BY THE ILLINOIS DEPARTMENT OF TRANSPORTATION. THE DEPARTMENT TAKES NO RESPONSIBILITY FOR THE CONTENT, OR ACCURACY FOR ANY SUCH INFORMATION PROVIDED FROM SUCH EXTERNAL SOURCES. THIS PRODUCT IS FOR REFERENCE PURPOSES ONLY AND IS NOT TO BE CONSIDERED AS A LEGAL DOCUMENT OR SURVEY INSTRUMENT. THE MAPS AND DATA CONTAINED THEREIN ARE TO BE USED WITHOUT WARRANTIES OF ANY KIND, EITHER EXPRESSED OR IMPLIED, INCLUDING BUT NOT LIMITED TO WARRANTIES OF SUITABILITY TO A PARTICULAR PURPOSE OR USE. ANY RELIANCE ON THE INFORMATION CONTAINED HEREIN IS AT THE USER'S OWN RISK. THE ILLINOIS DEPARTMENT OF TRANSPORTATION CANNOT BE HELD LIABLE FOR ANY SPECIAL, INDIRECT, OR CONSEQUENTIAL DAMAGES OR ANY DAMAGES WHATSOEVER RESULTING FROM LOSS OF USE, DATA, PROFITS, WHETHER IN AN ACTION OF CONTRACT NEGLIGENCE, OR OTHER ACTION, ARISING OUT OF OR IN CONNECTION WITH THE USE OF THE INFORMATION HEREIN PROVIDED.

RAILROADS

CODE	RAILROAD NAME
ASL	Alton and Southern Railway
BMTX	** Amtrak (National Railroad Passenger Corporation)
BURY	Burlington Shortline Ry.
BLCL	Bloomer Shippers Connecting Railroad Co.
BNSF	BNSF Ry. Co.
BRC	Belt Ry. Co. of Chicago
BSTX	** Bi-State Development Agency, St. Louis d/b/a MetroLink
CRF	Central Illinois Railroad Company (D/S)
CCUC	Chicago & North Western R.R. Corp.
CIR	City of Rochelle
CN	Canadian National Rys.
COER	Crab Orchard & Elysian R.R.
CPNS	CANADIAN PACIFIC RAILWAY
CRL	Chicago Rail Link
CSS	Chicago South Shore & South Bend R.R.
CSXT	CSX Transportation, Inc.
CTA	Chicago Transit Authority
CTM	Chicago Terminal Railroad
DT	Decatur Junction Ry. Co.
EFRR	* Effingham R.R. Co.
EVWR	Evansville Western Railway, Inc.
GOVN	US Government
IAS	Indiana Harbor R.R., Ltd.
IHB	Indiana Harbor Belt R.R. Co.
ILW	Illinois Western
IMRR	Illinois & Midland R.R. Inc.
IRSD	The Indiana Road Co.
IR	Illinois Railway, LLC
IRYM	Illinois Railway Museum
ITB	Illinois Terminal Belt
IWR	Illinois Western R.R.
KBSR	Kankakee, Beaverville and Southern R.R. Co.
KCS	Kansas City Southern Ry. Co.
KJRY	Kochuk Junction Ry. Co.
MI	* Manufacturers' Junction Ry. Co.
MMAZ	Monticello Railroad Museum
NICD	Northern Indiana Commuter Transportation District
NIRC	** Northeast II Regional Commuter Rail Corp. d/b/a METRA
NS	Norfolk Southern Ry. Co.
PHRR	* Port Harbor Railroad (Respondent)
PI	Pulaski and Illinois Railroad
PIRY	* Pioneer Industrial Ry. Co.
PVIX	Private Railroad of Buzzi Unicem Cement
RVPR	* Riverport Railroad
SCW	South Chicago & Indiana Harbor Ry. Co.
SCSX	Silver Creek & Stephenson County
STR	Shawnee Terminal Ry. Co., Inc.
TPW	Toledo, Peoria & Western Ry. Corp.
TBRK	Terminal R.R. Association of St. Louis
TZPR	Tazewell & Peoria R.R.
UP	Union Pacific R.R.
USG	US Government
VRRR	Vandalia R.R. Co.
VVRR	Vermilion Valley Railroad
WSPR	Winconsin & Southern R.R. Co.

Illinois Amtrak Routes



LEGEND

- TOWNS ON RAILS
- INSET AREAS
- WATER
- POPULATION GREATER THAN 20,000
- COUNTIES
- RAILROADS
- BORDER STATE RAILROADS - NORTHAMERICA
- AMTRAK LINES
- INTERSTATES

0 5 10 20 30 40 Miles
0 12.5 25 50 75 100 Kilometers

LAST IL RR MAP REVISION: 6/15/2021

CHICAGO AREA



EAST ST. LOUIS AREA

