

Glenview – Northshore Glenbrook Hospital

ØIS2

NAV

Lat: N 42° 05.6'

Long: W 87° 51.2'

COMM

Freq: 155.400

PL: 82.5 W:06

Ph: 847-657-5800

LZ INFO

Elev:

678' Surface

Lighting:

Flood

Beacon:

No

Wind Sock:

Yes – Lighted

FACILITY

Northshore University

Health System

Glenbrook Hospital

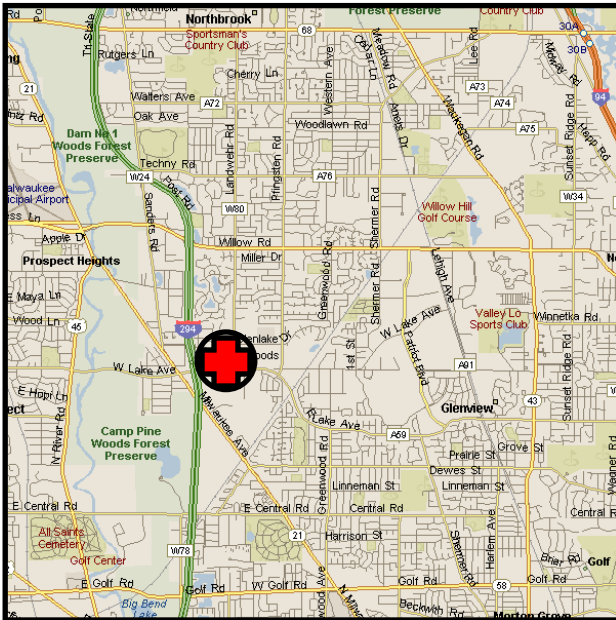
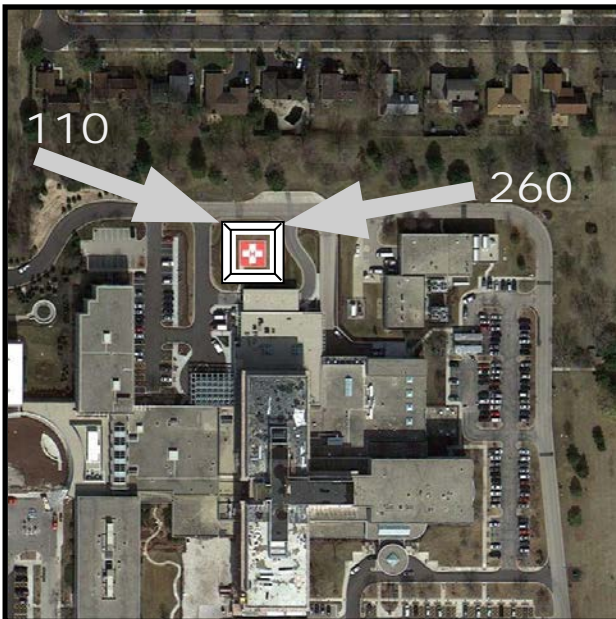
2100 Pfingsten Rd.

Glenview, IL 60026

217-657-5800

TLOF: 40' X 40'

SPECIAL NOTES:



Amended: 2018-08-06

PAGE 53

Glenview – Northshore Glenbrook Hospital

ØIS2

Granite City – Gateway Regional Medical Ctr. 38LL

NAV

Lat: N 38° 42.0'
Long: W 90° 08.6'

COMM

Freq: 155.340
PL: 82.5 **W:**06
Ph: 618-798-3000

LZ INFO

Elev:
425' Surface
Lighting:
Perimeter, Flood
Beacon:
Yes
Wind Sock:
Yes – Lighted

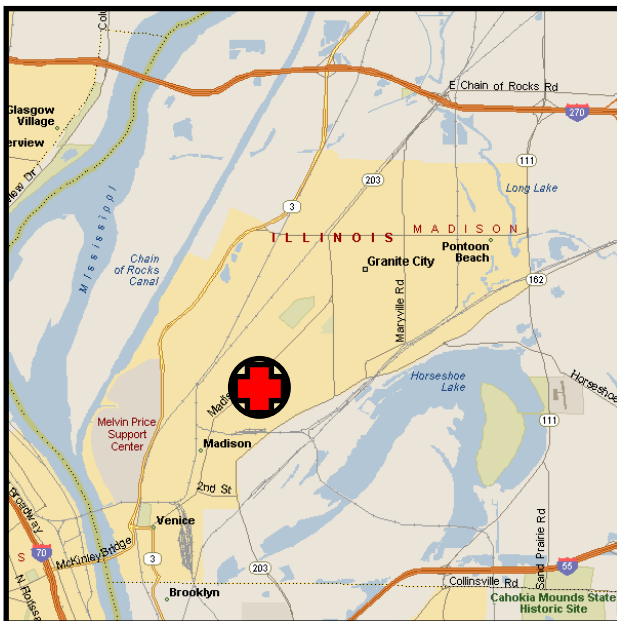
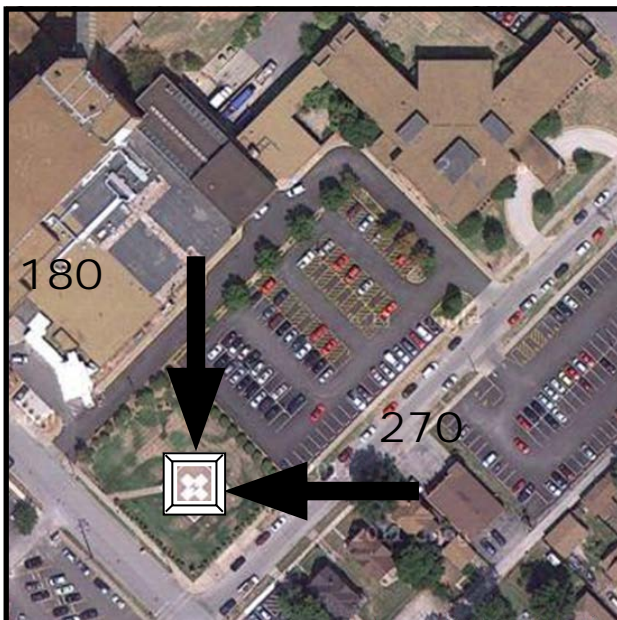
FACILITY

Gateway Regional Medical Center
2100 Madison Ave.
Granite City, IL 62040

TLOF: 44' X 44'

SPECIAL NOTES:

New Photo



Amended: 2014-04-24

PAGE 54

Granite City – Gateway Regional Medical Ctr. 38LL

Grayslake – Northwestern Med. Lake Forest Hosp. LL14

NAV

Lat: N 42° 20.26'
Long: W 88° 00.54'

COMM

Freq: 155.400
PL: 67.0 **W:**01
Ph: 847-535-8950

LZ INFO

Elev:
823' Surface
Lighting:
Perimeter
Beacon:
Yes
Wind Sock:
Yes – Lighted

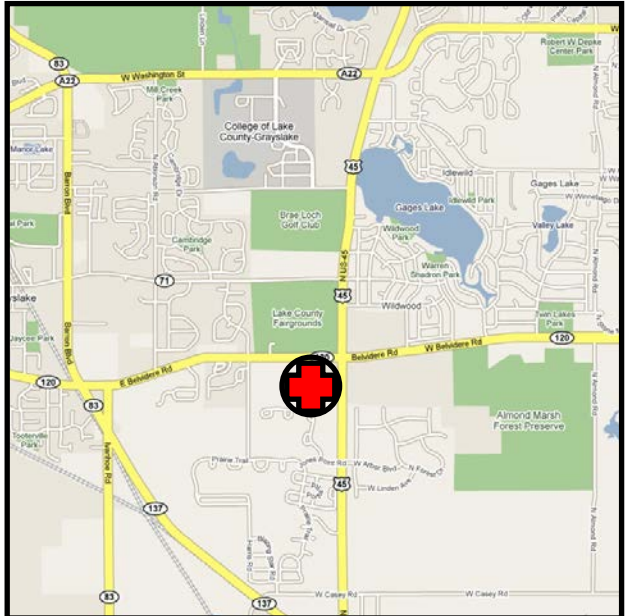
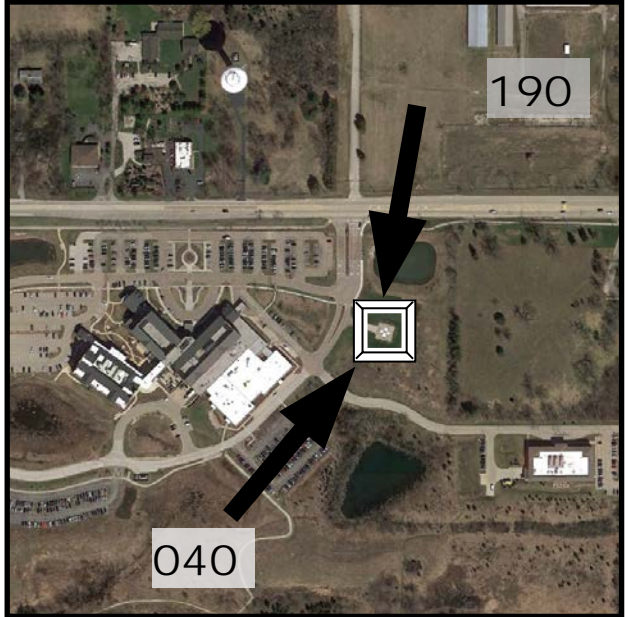
FACILITY

Northwestern Medicine
Lake Forest Hospital –
Grayslake Campus
1473 E. Belvidere Road
Grayslake, Illinois 60030

TLOF: 50' X 50'

SPECIAL NOTES:

Name Change



Amended: 2018-08-06

PAGE 55

Grayslake – Northwestern Med. Lake Forest Hosp. LL14

Greenville – HSHS Holy Family Hospital

59IS

NAV

Lat: N 38° 54.2'

Long: W 89° 24.4'

COMM

Freq: 155.340

PL: 114.8 W:18

Ph: 618-664-1230

LZ INFO

Elev:

585' Surface

Lighting:

Flood

Beacon:

No

Wind Sock:

Yes – Lighted

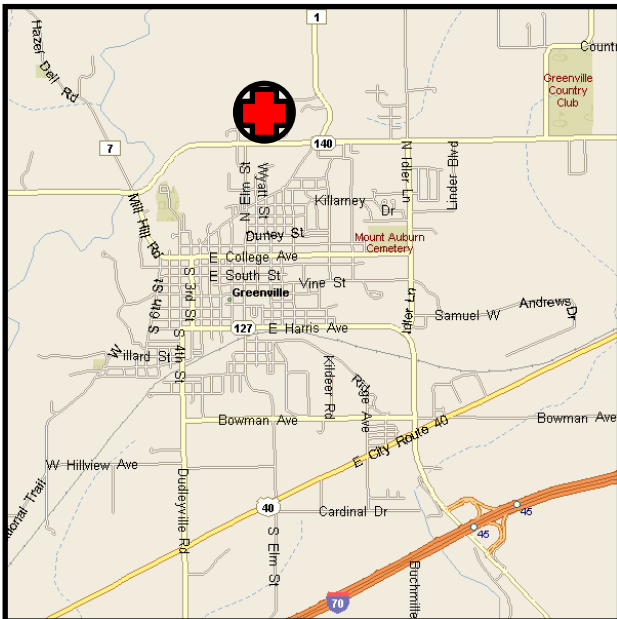
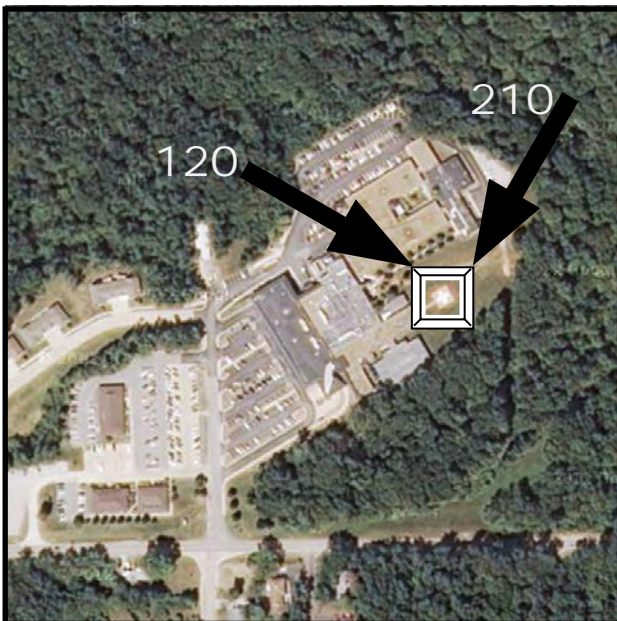
FACILITY

HSHS Holy Family
Hospital
200 Healthcare Dr.
Greenville, IL 62246

TLOF: 40' X 40'

SPECIAL NOTES:

Name Change
(was Greenville Regional
Hospital)



Amended: 2017-06-01

PAGE 56

Greenville – HSHS Holy Family Hospital

59IS

Harrisburg – Harrisburg Medical Center

4IS4

NAV

Lat: N 37° 43.9'

Long: W 88° 31.4'

COMM

Freq: 155.340

PL: 131.8 W: 24

Ph: 618-253-7671

LZ INFO

Elev:

397' Surface

Lighting:

Perimeter, Flood

Beacon:

Yes

Wind Sock:

Yes – Lighted

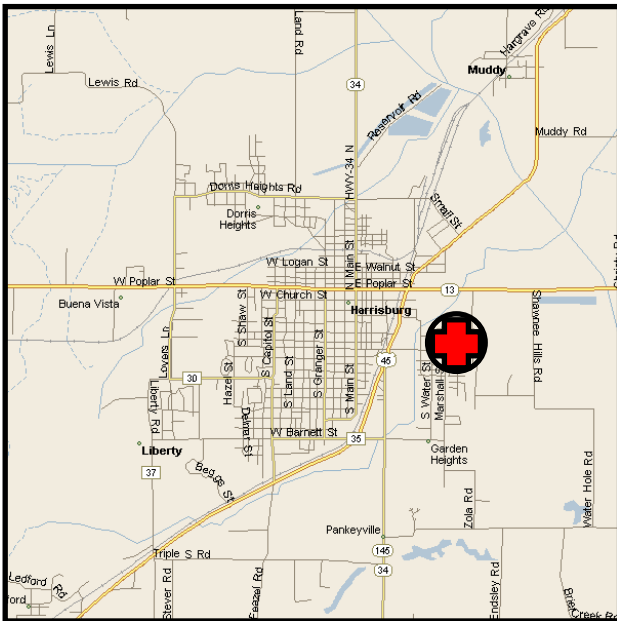
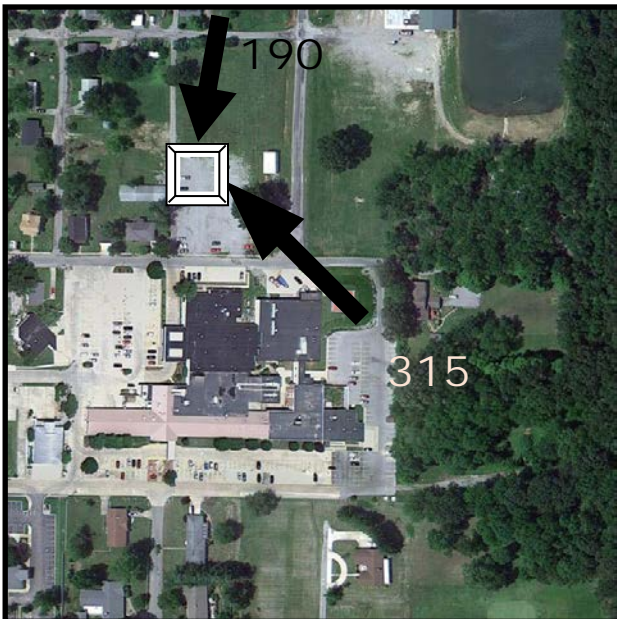
FACILITY

Harrisburg Medical Center
100 Dr. Warren Tuttle Dr
Harrisburg, IL 62946

TLOF: 40' X 40'

SPECIAL NOTES:

Helipad relocated 360 ft northwest. Changed approaches. Google Earth not updated yet for new photo. Tree in path gone.



Amended: 2018-04-10

PAGE 57

Harrisburg – Harrisburg Medical Center

4IS4

Harvard – Mercy Harvard Hospital

8IL4

NAV

Lat: N 42° 25.6'
Long: W 88° 36.4'

COMM

Freq: 155.400
PL: W:
Ph: 815-943-5431

LZ INFO

Elev:
930' Surface
Lighting:
Perimeter
Beacon:
Yes
Wind Sock:
Yes – Lighted

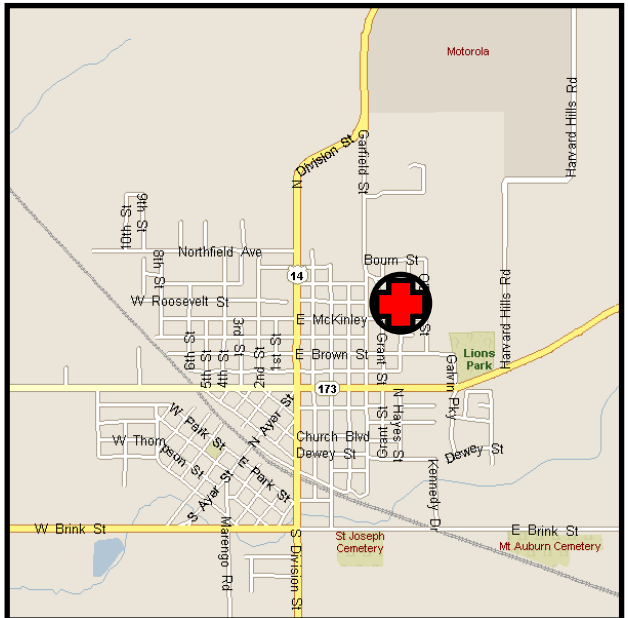
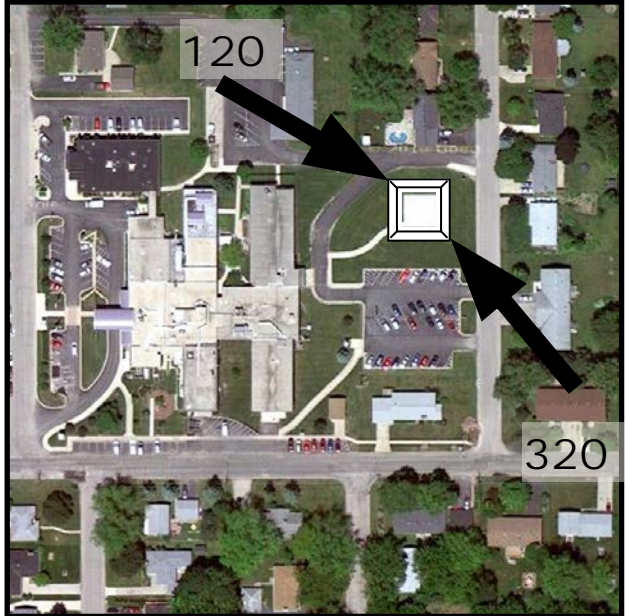
FACILITY

Mercy Harvard Hospital
901 Grant St.
Harvard, IL 60033

TLOF: 40' X 40'

SPECIAL NOTES:

New Photo



Amended: 2012-05-29

PAGE 58

Harvard – Mercy Harvard Hospital

8IL4

Harvey – UChicago Medicine Ingalls Memorial IL92

NAV

Lat: N 41° 36.4'
Long: W 87° 39.6'

COMM

Freq: 155.340
PL: 77.0 W:04
Ph: 708-333-2300

LZ INFO

Elev:
640' Parking Deck
Lighting:
Perimeter (Amber) Flood
Beacon:
Yes
Wind Sock:
Yes – Lighted

FACILITY

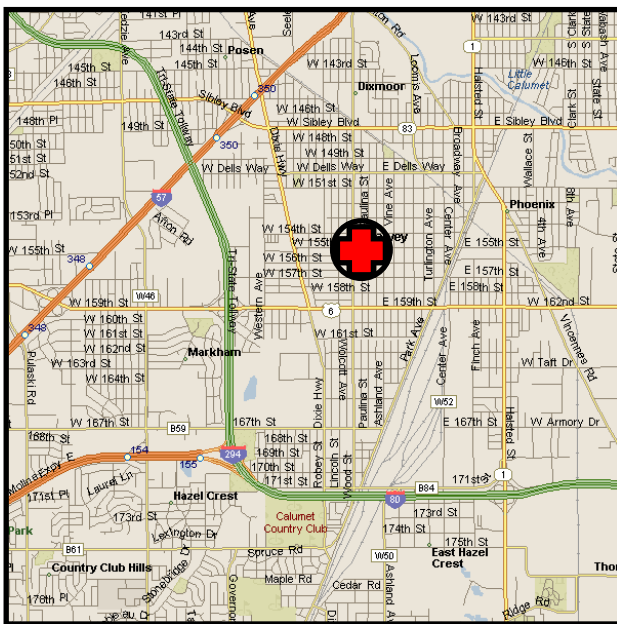
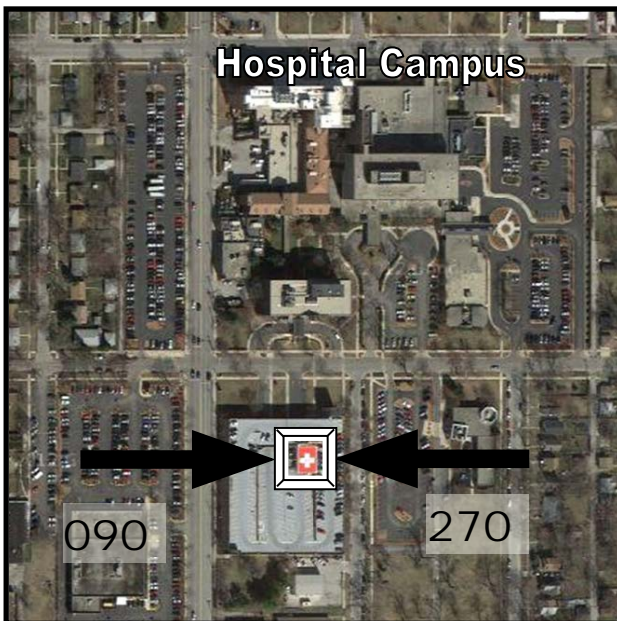
UChicago Medicine Ingalls Memorial
One Ingalls Dr.
Harvey, IL 60426

TLOF: 40' X 40'

SPECIAL NOTES:

Heliport is on parking deck
South of hospital.
Ambulance transfer
required.

Unlit pole South of pad.



Amended: 2018-04-10

PAGE 59

Harvey – UChicago Medicine Ingalls Memorial IL92

Havana – Mason District Hospital

31IS

NAV

Lat: N 40° 18.37'

Long: W 90° 03.27'

COMM

Freq: 155.340

PL: 192.8 W:37

Ph: 309-543-4431

LZ INFO

Elev:

479' Surface

Lighting:

Perimeter

Beacon:

Yes

Wind Sock:

Yes – Lighted

FACILITY

Mason District Hospital

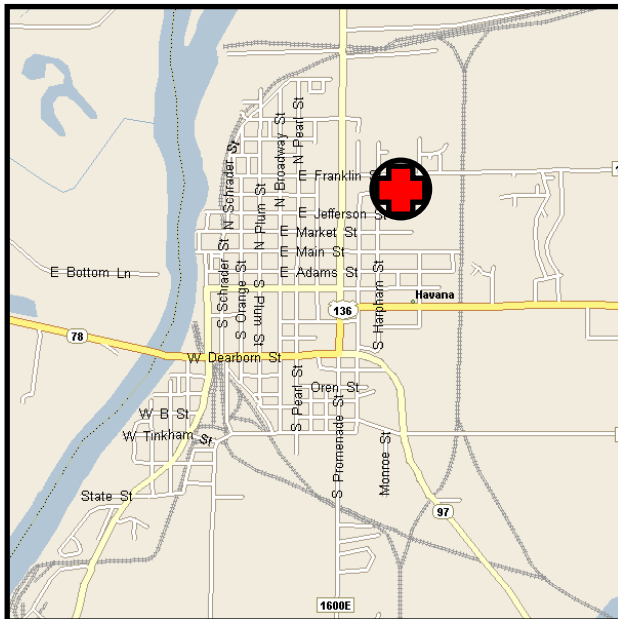
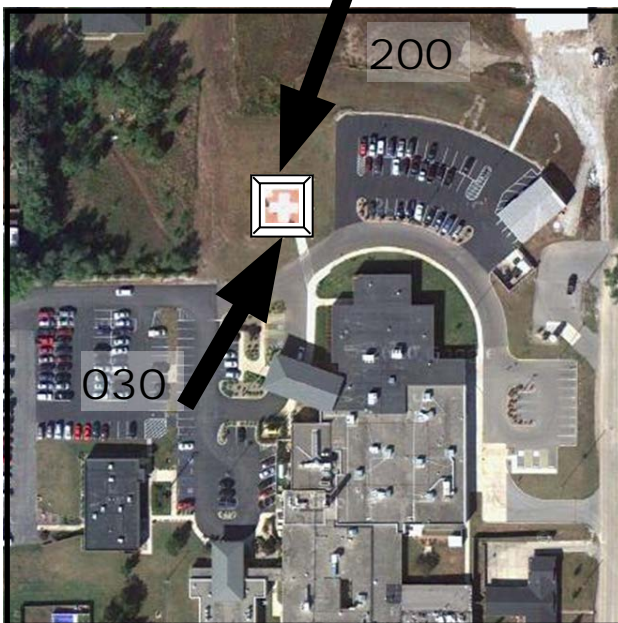
P.O. Box 530

Havana, IL 62644

TLOF: 42' X 42'

SPECIAL NOTES:

Change approach from
040° to 030°



Amended: 2016-04-06

PAGE 60

Hazel Crest – Advocate South Suburban Hospital 8IL8

NAV

Lat: N 41° 34.1'
Long: W 87° 41.8'

COMM

Freq: 155.340
PL: 123.0 W:22
Ph: 708-799-8000

LZ INFO

Elev:
665' Surface
Lighting:
Perimeter
Beacon:
Yes
Wind Sock:
Yes – Lighted

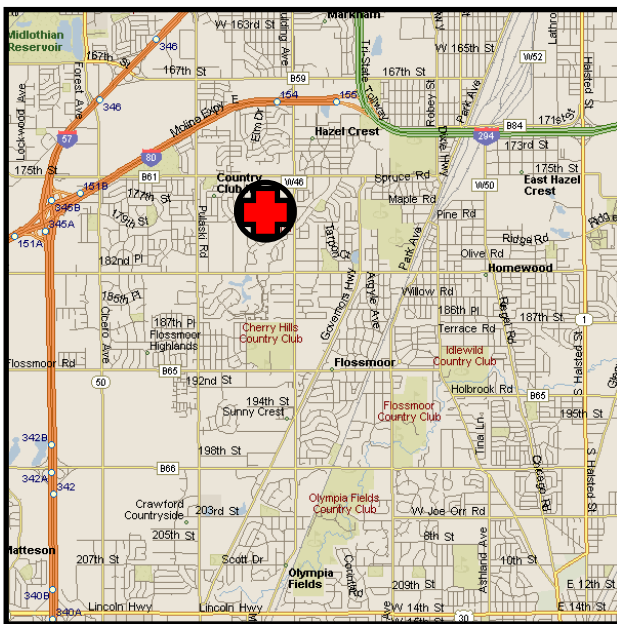
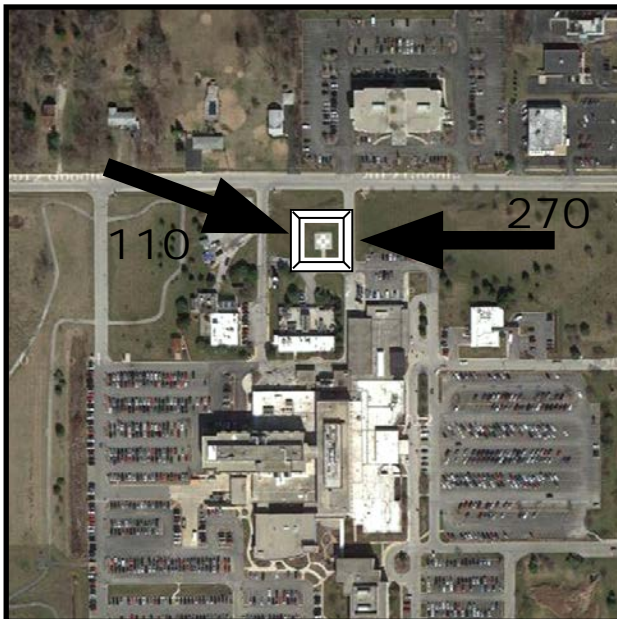
FACILITY

Advocate South Suburban
Hospital
17800 S. Kedzie Ave.
Hazel Crest, IL 60429

TLOF: 40' X 40'

SPECIAL NOTES:

New Photo



Amended: 2012-05-29

PAGE 61

Herrin – Herrin Hospital

5ILØ

NAV

Lat: N 37° 48.0'
Long: W 89° 01.6'

COMM

Freq: 155.340
PL: 151.4 W:28
Ph: 618-942-2171

LZ INFO

Elev:
444' Roof
Lighting:
Perimeter, Flood
Beacon:
Yes
Wind Sock:
Yes – Lighted

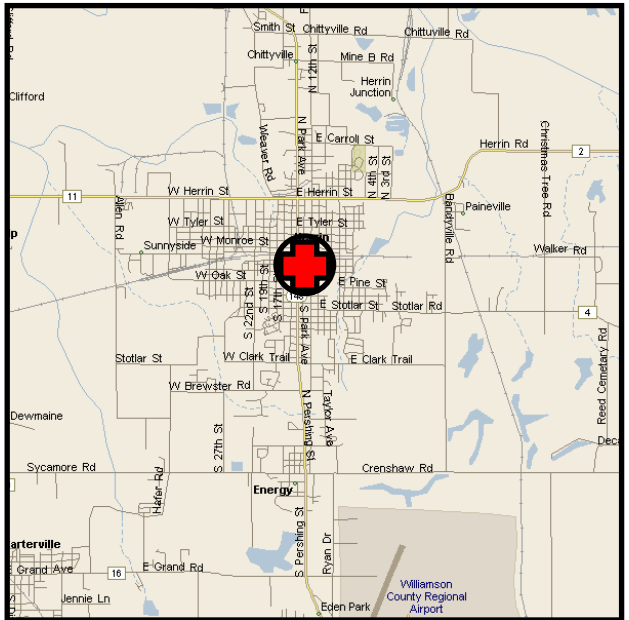
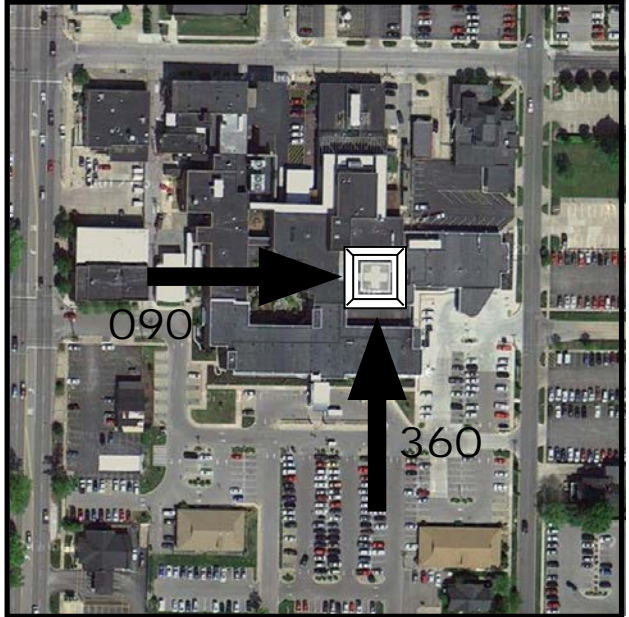
FACILITY

Herrin Hospital
201 S. 14th St.
Herrin, IL 62948

TLOF: 40' X 40'

SPECIAL NOTES:

Change approach from
270 to 360 degrees
Update elevation



Amended: 2017-03-13

PAGE 62

Highland – St. Joseph's Hospital

IL66

NAV

Lat: N 38° 45.23'

Long: W 89° 40.07'

COMM

Freq: 155.160

PL: 94.8 W:12

Ph: 618-651-2600

LZ INFO

Elev:

548' Surface

Lighting:

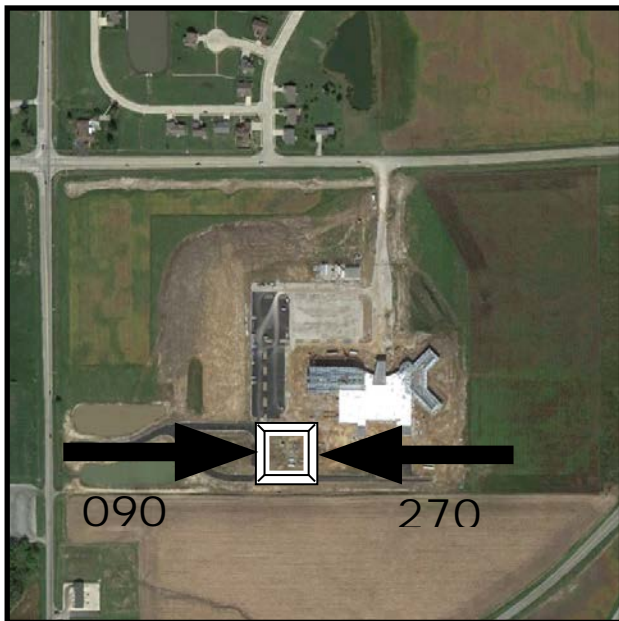
Perimeter, Flood

Beacon:

No

Wind Sock:

Yes – Lighted



FACILITY

St. Joseph's Hospital

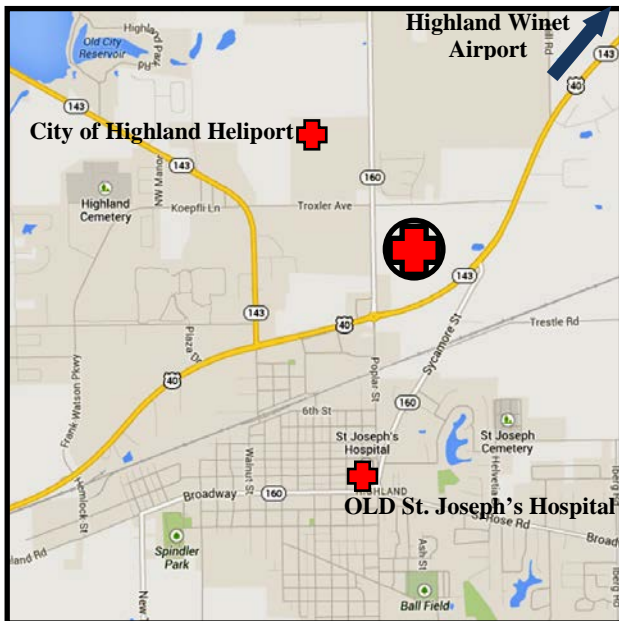
12866 Troxler Ave.

Highland, IL 62249

TLOF: 40' X 40'

SPECIAL NOTES:

Caution: Highland-Winet Airport 2.1 miles NE has both helicopter and glider traffic.



Amended: 2018-08-06

PAGE 63

Hillsboro – Hillsboro Area Hospital

8IS4

NAV

Lat: N 39° 09.1'
Long: W 89° 28.9'

COMM

Freq: 155.340
PL: 118.8 W:21
Ph: 217-532-6111

LZ INFO

Elev: 650' Surface
Lighting: Perimeter, Flood
Beacon: No
Wind Sock: Yes – Lighted

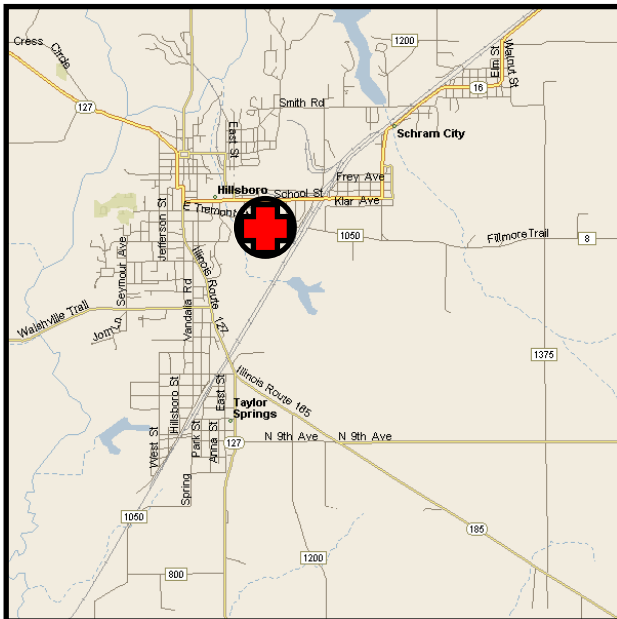
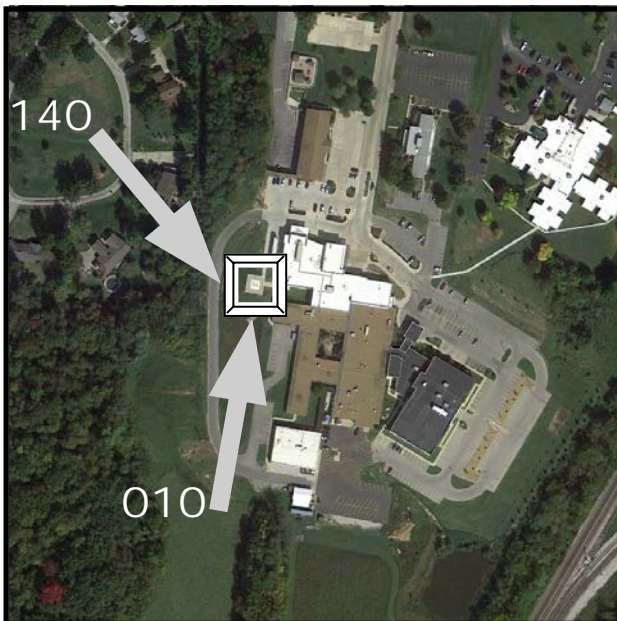
FACILITY

Hillsboro Area Hospital
1200 E. Tremont
Hillsboro, IL 62049

TLOF: 40' X 40'

SPECIAL NOTES:

New Photo



Amended: 2015-10-16

PAGE 64

Hinsdale – Adventist Hinsdale Hospital

1IL2

NAV

Lat: N 41° 48.32
Long: W 87° 55.29'

COMM

Freq: 155.340
PL: 85.4 W: 7
Ph: 630-856-3300

LZ INFO

Elev:
725' Roof
Lighting:
Perimeter, Flood
Beacon:
No
Wind Sock:
Yes – Lighted

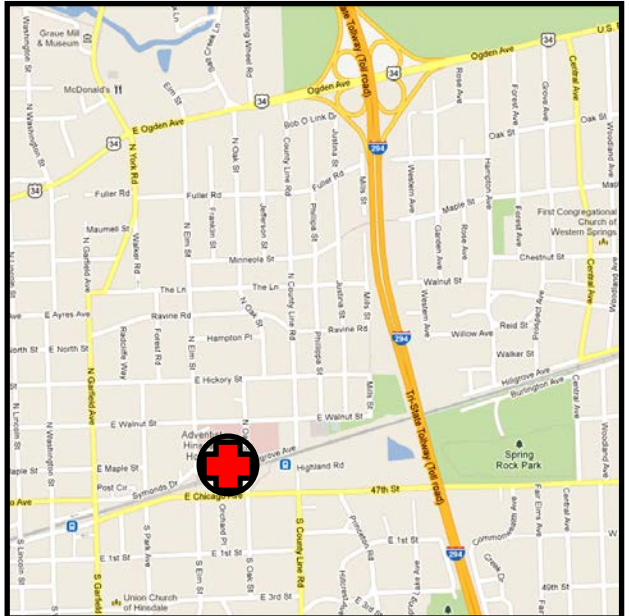
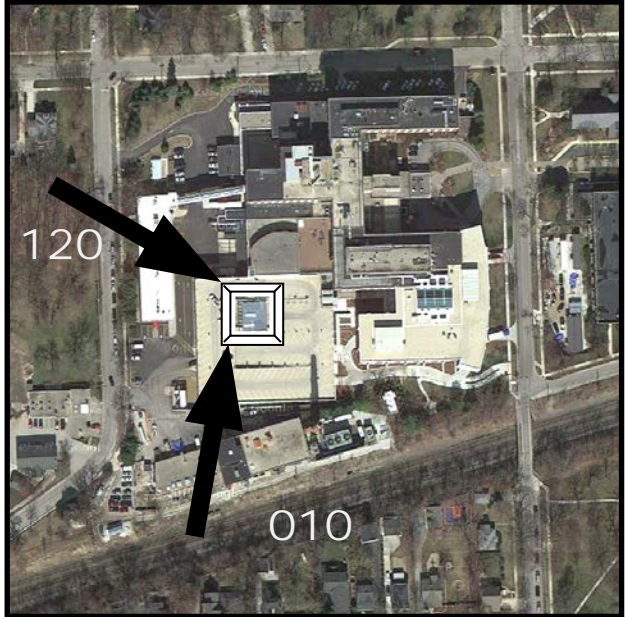
FACILITY

Adventist Hinsdale
Hospital
120 N. Oak Street
Hinsdale, IL 60521

TLOF: 45' X 45'

SPECIAL NOTES:

New Loc Id



Amended: 2015-10-16

PAGE 65

NAV

Lat: N 42° 03.18'
Long: W 88° 08.40'

COMM

Freq: 155.340
PL: 88.5 W:08
Ph: 847-843-2000

LZ INFO

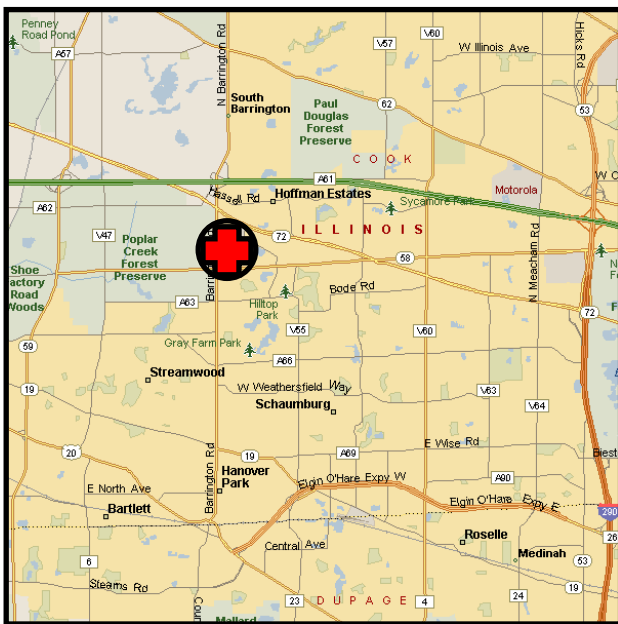
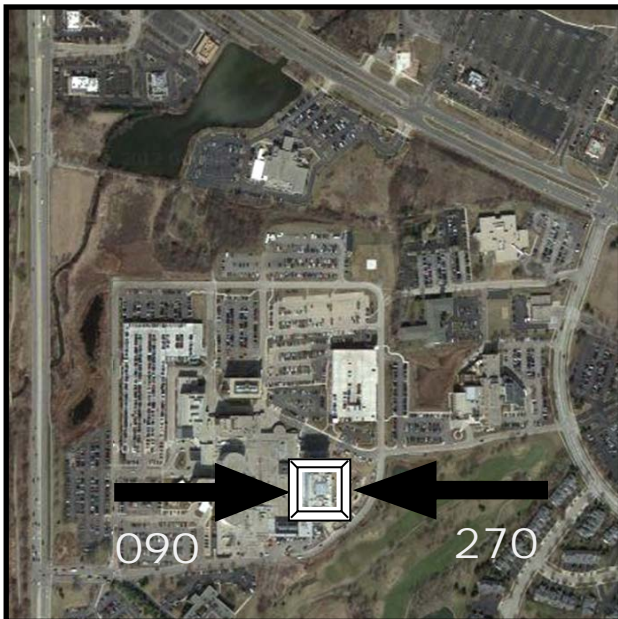
Elev:
920' Surface
Lighting:
Perimeter
Beacon:
Yes
Wind Sock:
Yes – Lighted

FACILITY

St. Alexius Medical Center
1555 N. Barrington Rd.
Hoffman Estates, IL 60194
TLOF: 40' X 40'

SPECIAL NOTES:

New frequencies 8/20/13
Lights can be activated on
123.05 if needed



Hoopeston – Community Memorial Hospital Ø1IL

NAV

Lat: N 40° 27.5'

Long: W 87° 39.5'

COMM

Freq: 155.340

PL: 162.2 **W:**32

Ph: 217-283-5531

LZ INFO

Elev:

715' Surface

Lighting:

Perimeter

Beacon:

No

Wind Sock:

Yes - Lighted

FACILITY

Hoopeston Community
Memorial Hospital

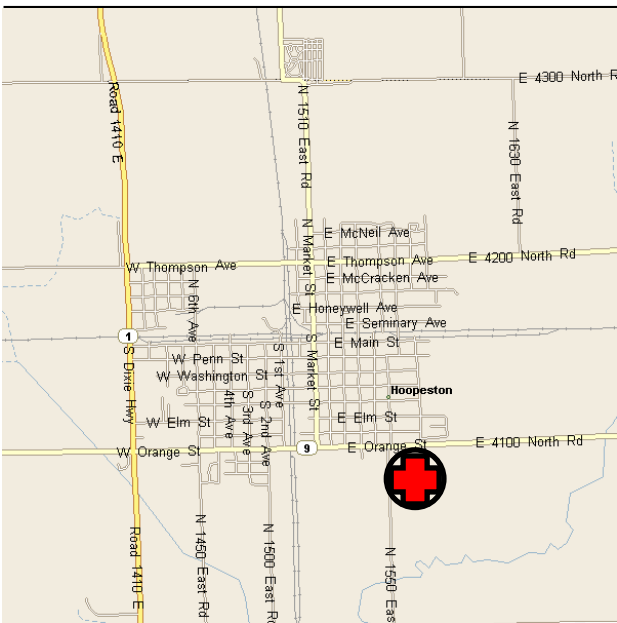
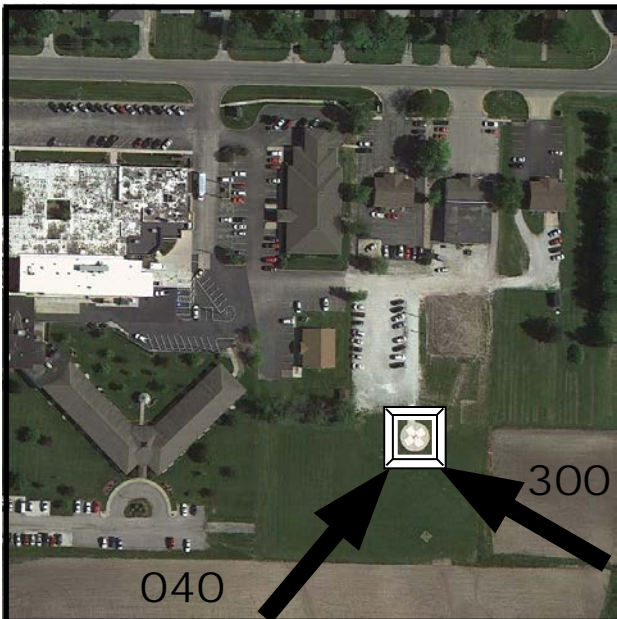
701 E. Orange

Hoopeston, IL 60942

TLOF: 30' X 30'

SPECIAL NOTES:

New Photo



Amended: 2014-08-08

PAGE 67

Hopedale - Hopedale Medical Complex

IL06

NAV

Lat: N 40° 25.05

Long: W 89° 24.97

COMM

Freq: 155.340

PL: 85.4 W: 7

Ph: 309-449-4400

LZ INFO

Elev:

643 - Surface

Lighting:

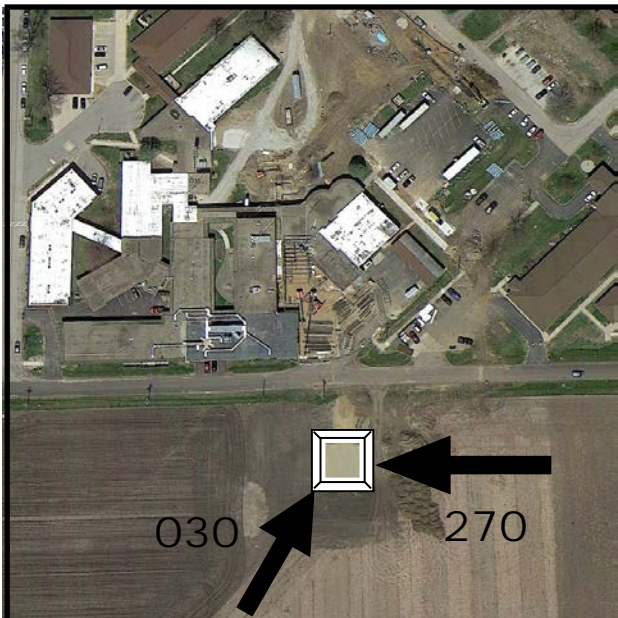
Flood

Beacon:

No

Wind Sock:

Yes - Lighted



FACILITY

Hopedale Medical
Complex

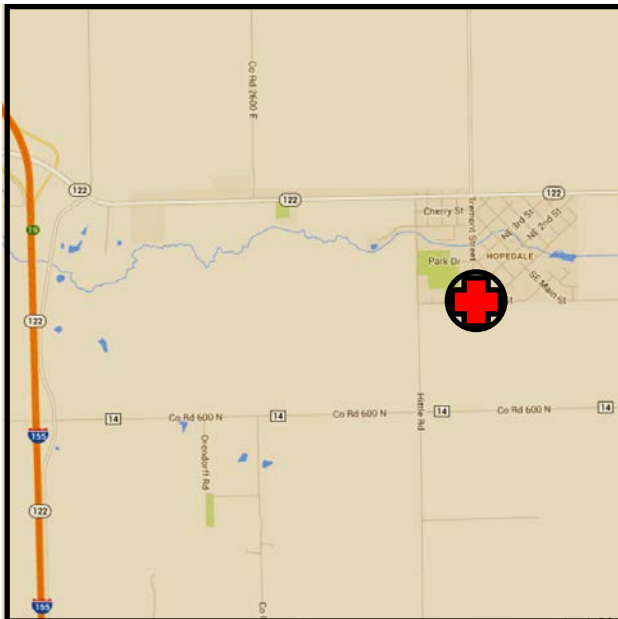
107 Tremont Street
Hopedale, IL 61747

TLOF: 45 X 45

SPECIAL NOTES:

Unmarked Power Lines to
the North

New Loc Id



Amended: 2015-10-16

PAGE 68

Huntley – Centegra Hospital Huntley

IL74

NAV

Lat: N 42° 10.64

Long: W 88° 23.93

COMM

Freq: 155.4

DPL: 155

Ph: 224-654-0100

LZ INFO

Elev:

892' - Surface

Lighting:

Perimeter

Beacon:

No

Wind Sock:

Yes - Lighted

FACILITY

Centegra Hospital

Huntley

10450 Algonquin Rd

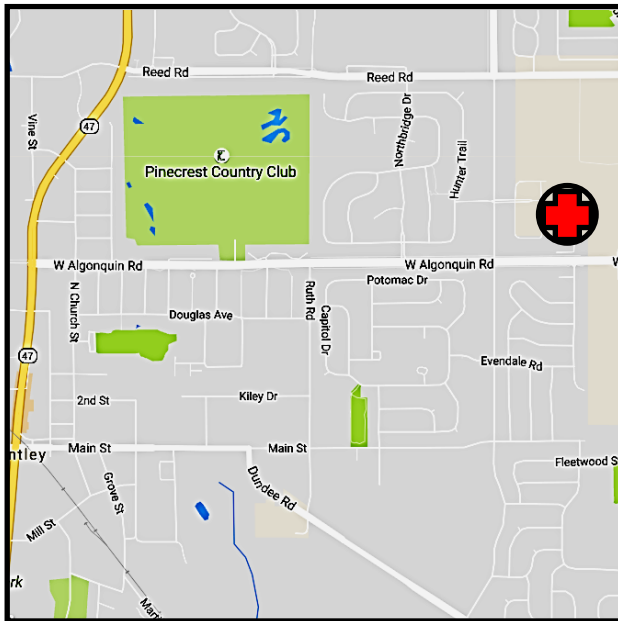
Huntley, IL 60142

TLOF: 44 X 44

SPECIAL NOTES:

Caution – No-Fly Zone to the west of the hospital, west of Haligus Road. Do not overfly sub-division.

Approach from the west begins northbound over Haligus Road.



Amended: 2016-7-29

PAGE 69

Huntley – Centegra Hospital Huntley

IL74

Jacksonville – Passavant Area Hospital

84IS

NAV

Lat: N 39° 44.9'
Long: W 90° 15.6'

COMM

Freq: 155.340
PL: 162.2 **W:** 32
Ph: 217-245-9541

LZ INFO

Elev:
604' Surface
Lighting:
Perimeter
Beacon:
Yes
Wind Sock:
Yes – Lighted

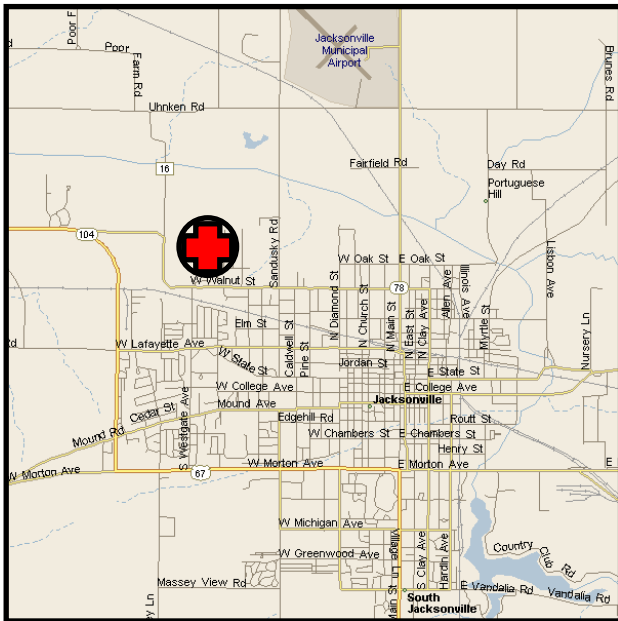
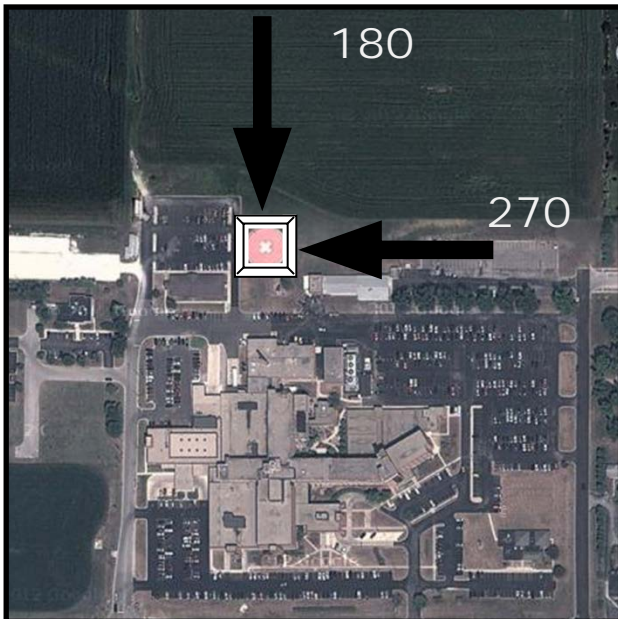
FACILITY

Passavant Area Hospital
1600 W. Walnut
Jacksonville, IL 62650

TLOF: 100' X 100'

SPECIAL NOTES:

Based aircraft on pad.
Notify dispatch center at
800-247-3822 prior to
arrival so helicopter can be
moved.



Amended: 2014-04-24

PAGE 70

Jacksonville – Passavant Area Hospital

84IS

Jerseyville – Jersey Community Hospital

27IL

NAV

Lat: N 39° 06.6'
Long: W 90° 20.6'

COMM

Freq: 155.340
PL: 114.8 **W:**18
Ph: 618-498-6402

LZ INFO

Elev:
630' Surface
Lighting:
Perimeter
Beacon:
Yes
Wind Sock:
Yes – Lighted

FACILITY

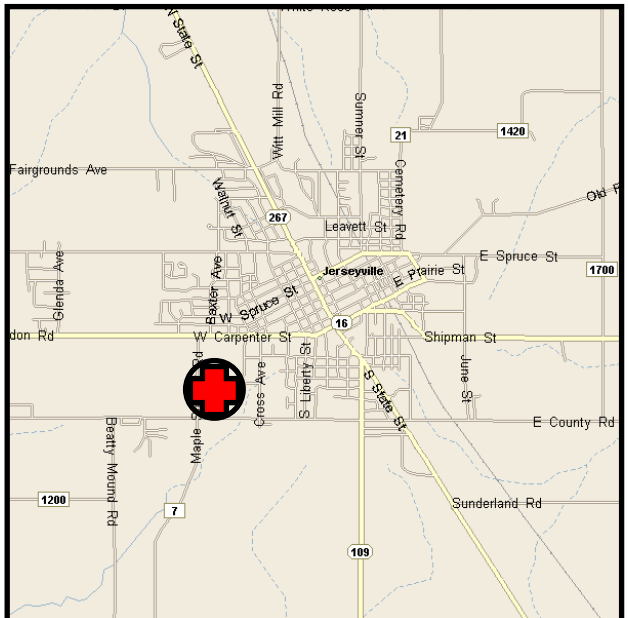
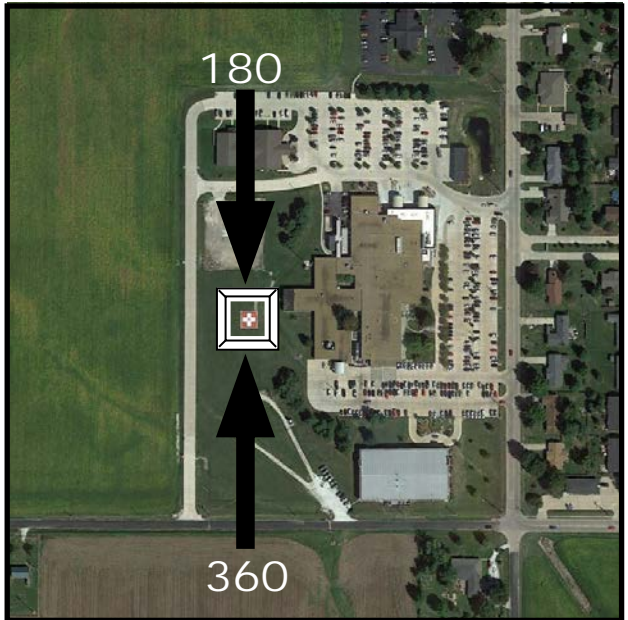
Jersey Community
Hospital
P.O. Box 426
Jerseyville, IL 62052

TLOF: 40' X 40'

SPECIAL NOTES:

New Phone number, new
photo

Helicopter based on pad



Amended: 2015-10-16

PAGE 71

Jerseyville – Jersey Community Hospital

27IL

Joliet – Presence St. Joseph Medical Center 6IS9

NAV

Lat: N 41° 31.7'
Long: W 88° 08.2'

COMM

Freq: 155.340
PL: 91.5 W:11
Ph: 815-725-7133

LZ INFO

Elev:
641' Surface
Lighting:
Perimeter, Flood
Beacon:
Yes
Wind Sock:
Yes – Lighted

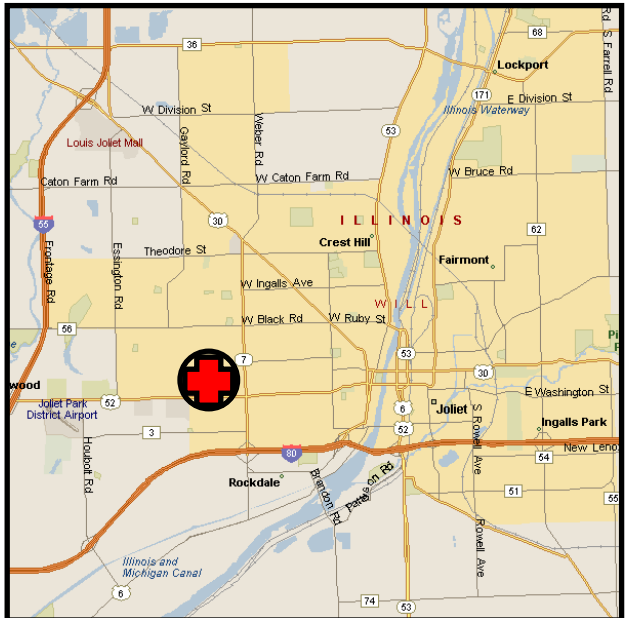
FACILITY

Presence St. Joseph
Medical Center
333 N. Madison
Joliet, IL 60435

TLOF: 70' X 70'

SPECIAL NOTES:

Name Change to Presence



Amended: 2016-08-29

PAGE 72

Kankakee – Riverside Medical Center

10IL

NAV

Lat: N 41° 07.43'
Long: W 87° 53.13'

COMM

Freq: 155.340
PL: 110.9 W:17
Ph: 815-933-1671

LZ INFO

Elev:
674' Rooftop
Lighting:
Flood
Beacon:
Yes: CGY Flashing
Wind Sock:
Yes – Lighted

FACILITY

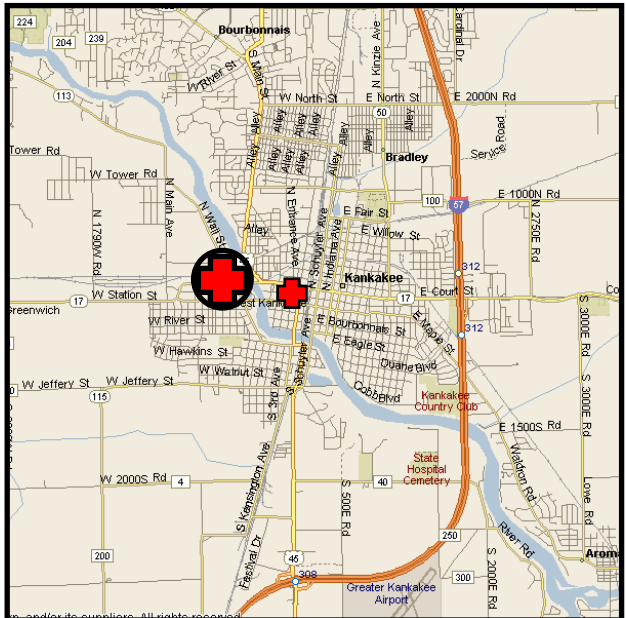
Riverside Medical Center
350 N. Wall Street
Kankakee, IL 60901

TLOF: 59' X 59'

SPECIAL NOTES:

Presence St. Mary's
Hospital is close by to
the East.

New Photo



Amended: 2015-10-16

PAGE 73

Kankakee – Presence St. Mary's Hospital

11IL

NAV

Lat: N 41° 07.2'
Long: W 87° 52.4'

COMM

Freq: 155.340
PL: 156.7 W:31
Ph: 815-937-2400

LZ INFO

Elev:
610' Roof
Lighting:
Perimeter, Flood
Beacon:
Yes
Wind Sock:
Yes – Lighted

FACILITY

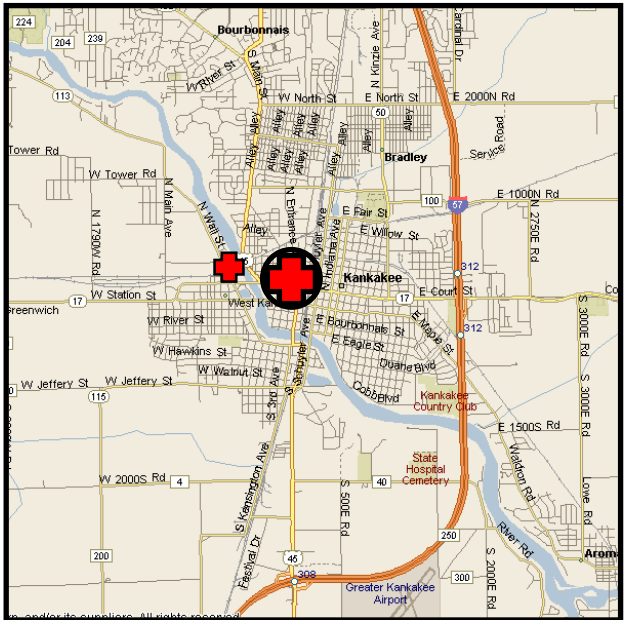
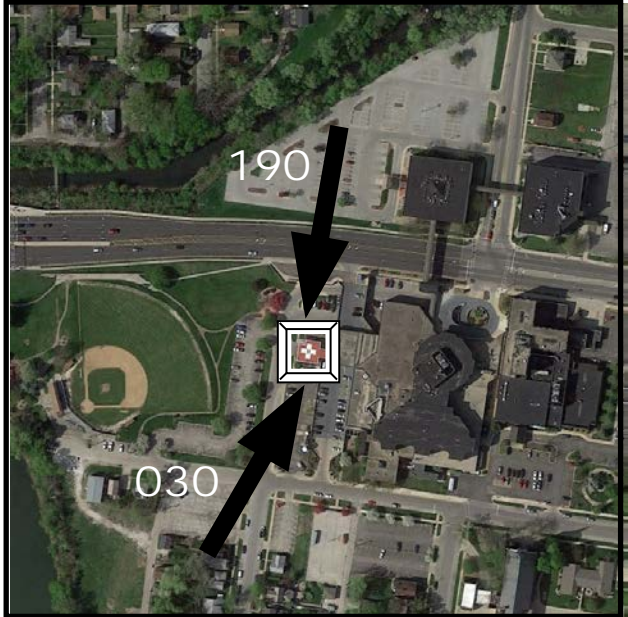
Presence St. Mary's
Hospital
500 W. Court St.
Kankakee, IL 60901

TLOF: 44' X 44'

SPECIAL NOTES:

Riverside Medical Center
Helipad is directly West
across river.

New Photo



Amended: 2018-08-06

PAGE 74

Kewanee – OSF Saint Luke Medical Center

OIL5

NAV

Lat: N 41° 13.3'

Long: W 89° 56.9'

COMM

Freq: 155.340

PL: 136.5 W:25

Ph: 309-852-7500

LZ INFO

Elev:

849' Surface

Lighting:

Perimeter

Beacon:

Yes

Wind Sock:

Yes – Lighted

FACILITY

OSF Saint Luke Medical Center

1051 W. South Street

Kewanee, IL 61443

TLOF: 40' X 40'

SPECIAL NOTES:

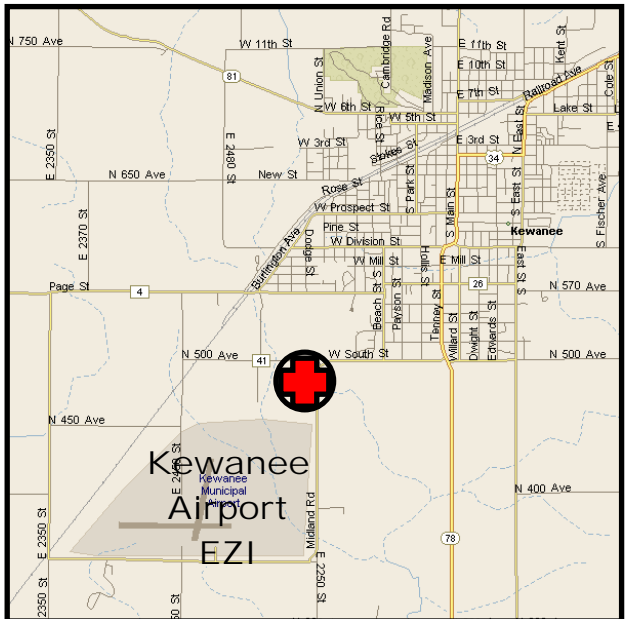
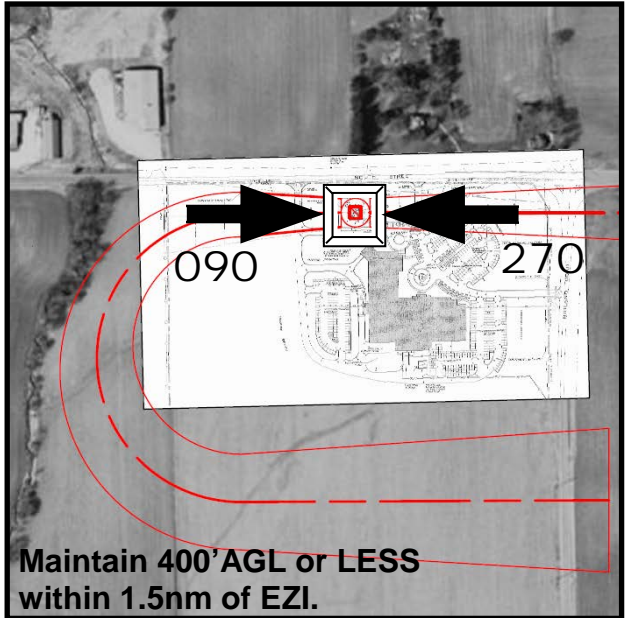
CAUTION:

Powerlines North & East

Arrival / Departure:

Fly 270° Initial. Execute turn to 090° by west tree line or sooner if able.

Name change – was Kewanee Hospital



Amended: 2015-10-16

PAGE 75

Kewanee – OSF Saint Luke Medical Center

OIL5

LaGrange – Adventist LaGrange Mem. Hosp. 18IL

NAV

Lat: N 41° 47.8'
Long: W 87° 53.2'

COMM

Freq: 155.340
PL: 146.2 W: 27
Ph: 708-245-9000

LZ INFO

Elev:
700' Roof
Lighting:
Perimeter (Amber)
Beacon:
Yes
Wind Sock:
Yes – Lighted

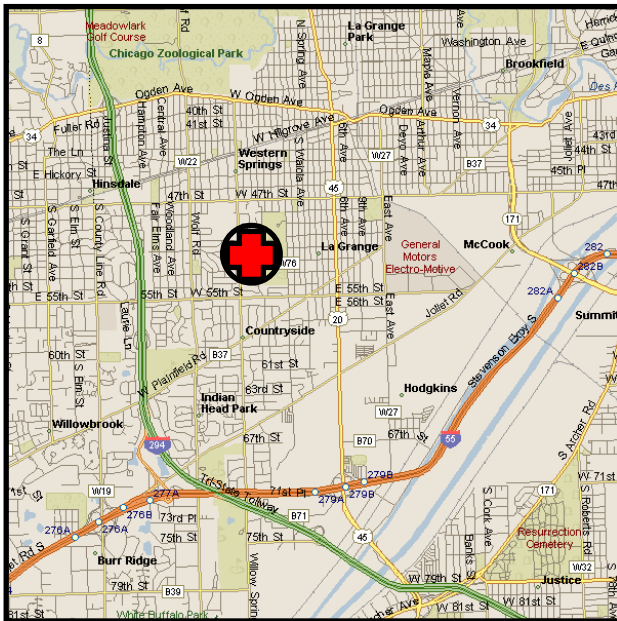
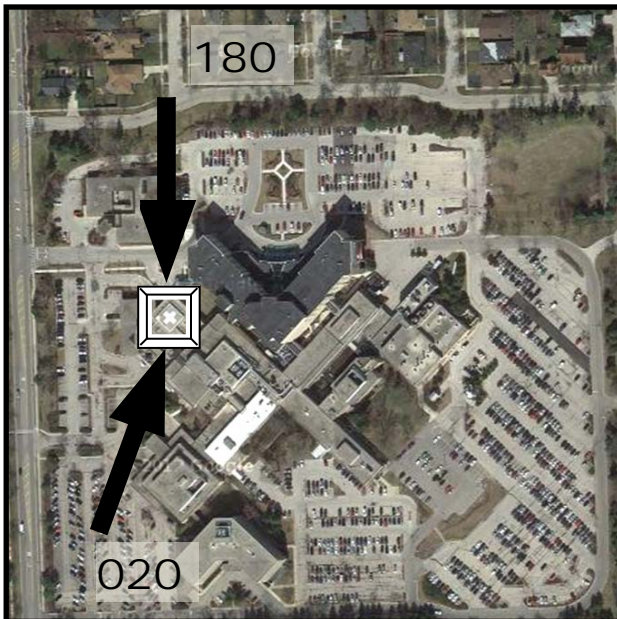
FACILITY

Adventist LaGrange
Memorial Hospital
5101 Willow Springs Rd.
LaGrange, IL 60525

TLOF: 40' X 40'

SPECIAL NOTES:

Corrected phone number



Amended: 2018-04-10

PAGE 76

LaGrange – Adventist LaGrange Mem. Hosp. 18IL

Lake Forest – Northwestern Med Lake Forest Hospital 45IL

NAV

Lat: N 42° 15.3'
Long: W 87° 51.8'

COMM

Freq: 155.340
PL: 67.0 W: 1
Ph: 847-234-5600

LZ INFO

Elev:
640' Surface
Lighting:
Perimeter
Beacon:
Yes
Wind Sock:
Yes – Lighted

FACILITY

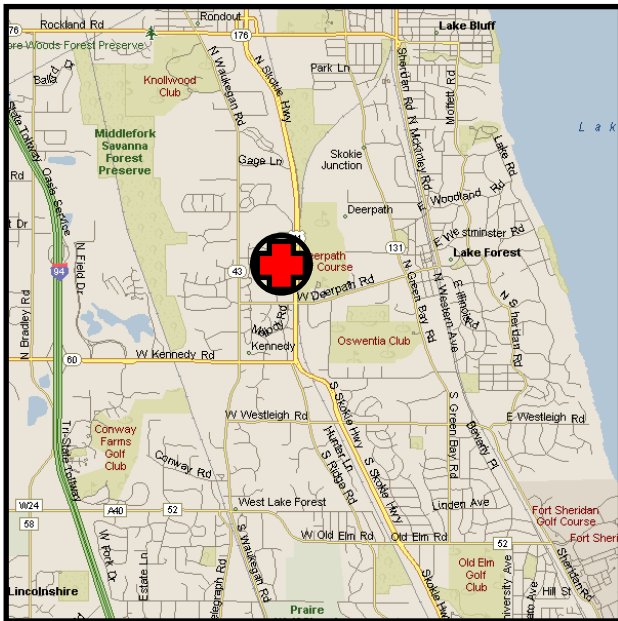
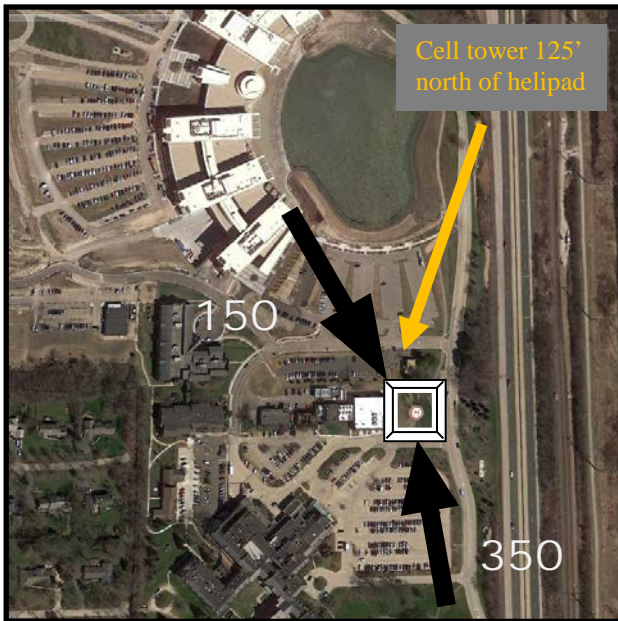
Northwestern Medicine
Lake Forest Hospital
660 N. Westmoreland Rd.
Lake Forest, IL 60045

TLOF: 50' X 50'

SPECIAL NOTES:

New Photo, approach
change from 140 to 150
degrees

Caution: Cell tower 125
feet north of helipad



Amended: 2018-04-10

PAGE 77

Lake Forest – Northwestern Med Lake Forest Hospital 45IL

Lawrenceville – Lawrence County Memorial Hosp. 1LL1

NAV

Lat: N 38° 43.7'

Long: W 87° 41.7'

COMM

Freq: 155.340

PL: 192.8 W: 37

Ph: 618-943-1000

LZ INFO

Elev:

470' Surface

Lighting:

Perimeter

Beacon:

Yes

Wind Sock:

Yes – Lighted

FACILITY

Lawrence County

Memorial Hospital

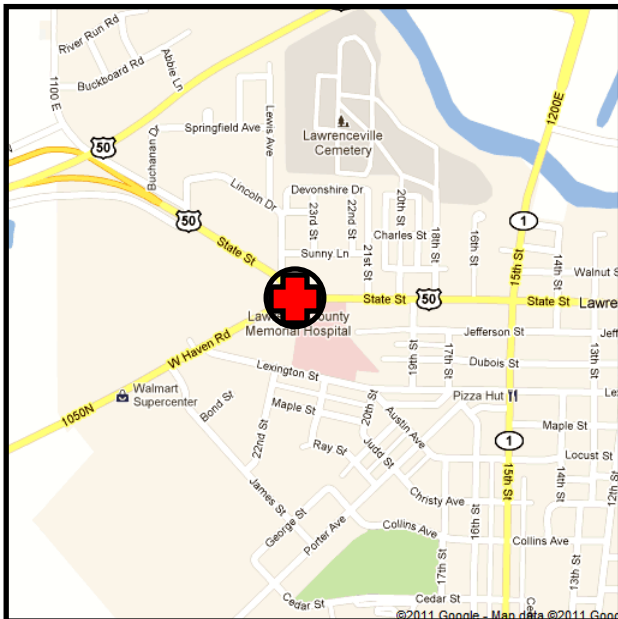
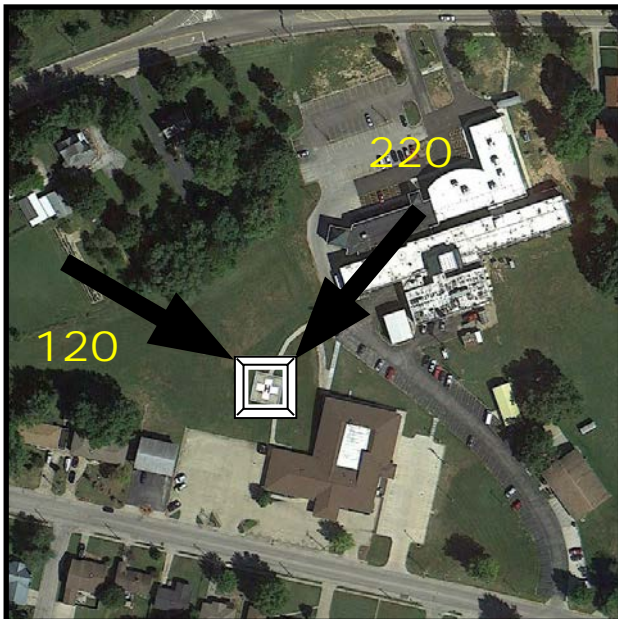
West State Street

Lawrenceville, IL 62439

TLOF: 40' X 40'

SPECIAL NOTES:

New Photo



Amended: 2015-10-16

PAGE 78

Lawrenceville – Lawrence County Memorial Hosp. 1LL1

Libertyville – Advocate Condell Med Center

Ø2IS

NAV

Lat: N 42° 16.5'

Long: W 87° 57.4'

COMM

Freq: 155.400

PL: 127.3 W:23

Ph: 847-362-2900

LZ INFO

Elev:

805' Roof

Lighting:

Perimeter, Flood

Beacon:

Yes

Wind Sock:

Yes – Lighted

FACILITY

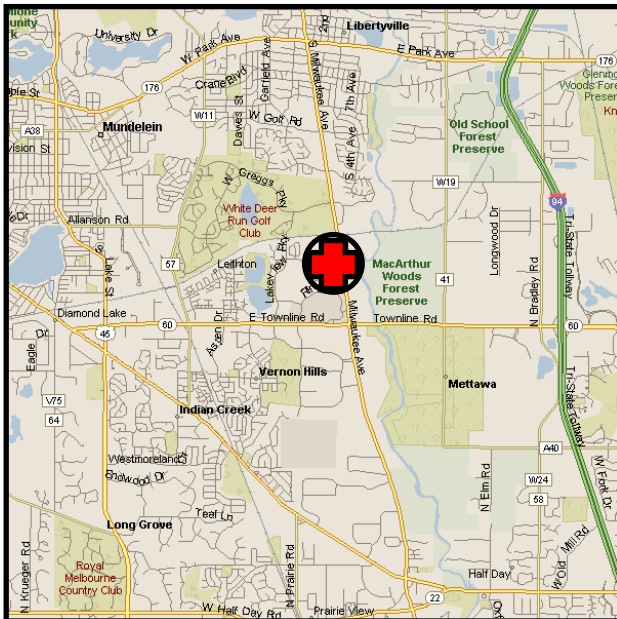
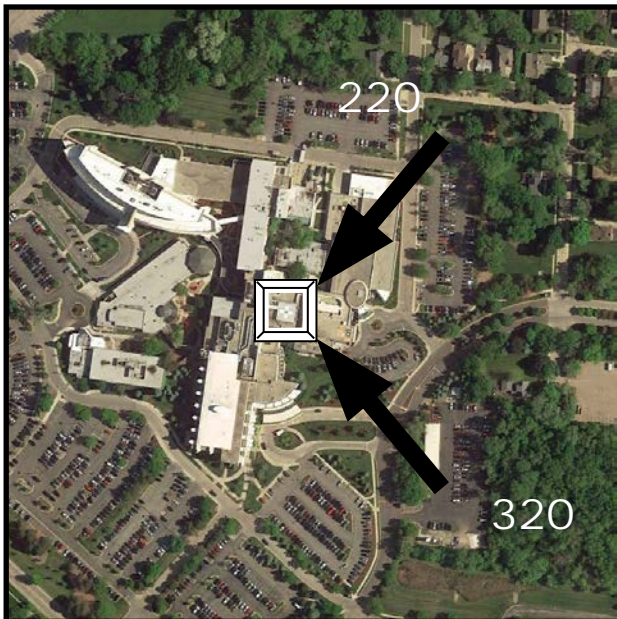
Advocate Condell Medical Center

801 S. Milwaukee Ave.
Libertyville, IL 60048

TLOF: 40' X 40'

SPECIAL NOTES:

New Photo



Amended: 2018-04-10

PAGE 79

NAV

Lat: N 40° 09.18'
Long: W 89° 23.45'

COMM

Freq: 155.340
PL: 110.9 W:17
Ph: 217-732-2161

LZ INFO

Elev: 586' Surface
Lighting: Perimeter
Beacon: Yes
Wind Sock: Yes – Lighted

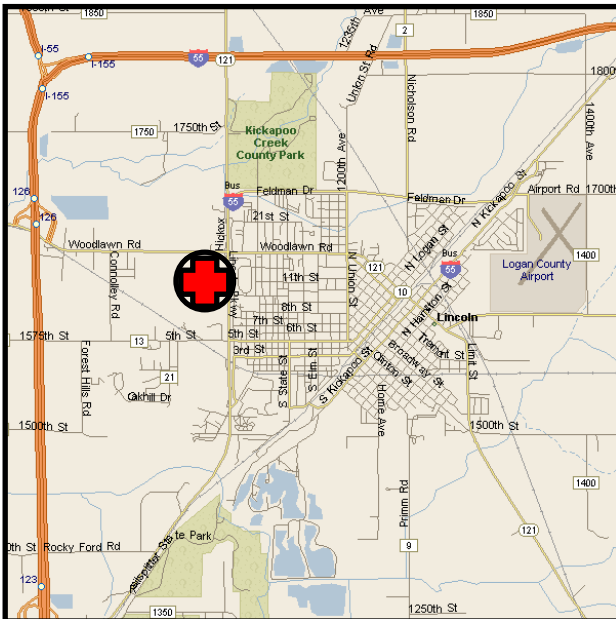
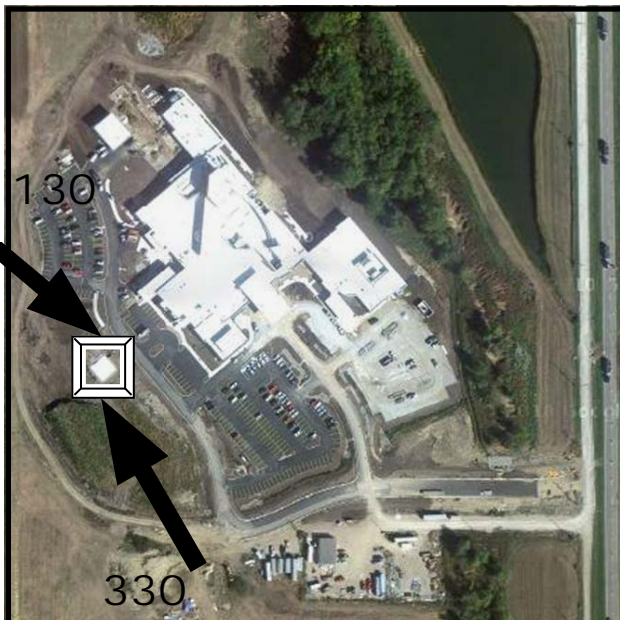
FACILITY

Abraham Lincoln Memorial Hospital
200 Stahlhut Dr.
Lincoln, IL 62656

TLOF: 40'X 40'

SPECIAL NOTES:

New Photo
New: Corrected Approaches



Amended: 2013-01-24

PAGE 80

Lindenhurst – Vista Surgery Center

8IS8

NAV

Lat: N 42° 24.8'

Long: W 88° 03.4'

COMM

Freq:

PL: W:

Ph: 847-356-4700

LZ INFO

Elev:

809' Surface

Lighting:

Perimeter

Beacon:

No

Wind Sock:

Yes – Lighted

FACILITY

Vista Surgery Center

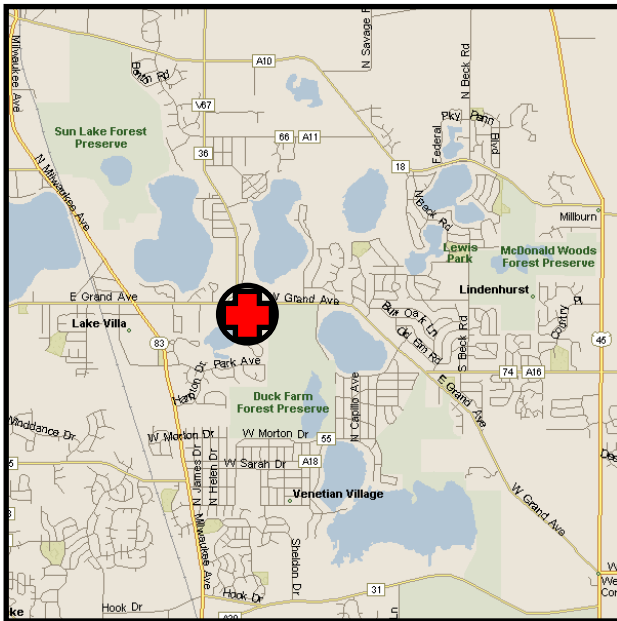
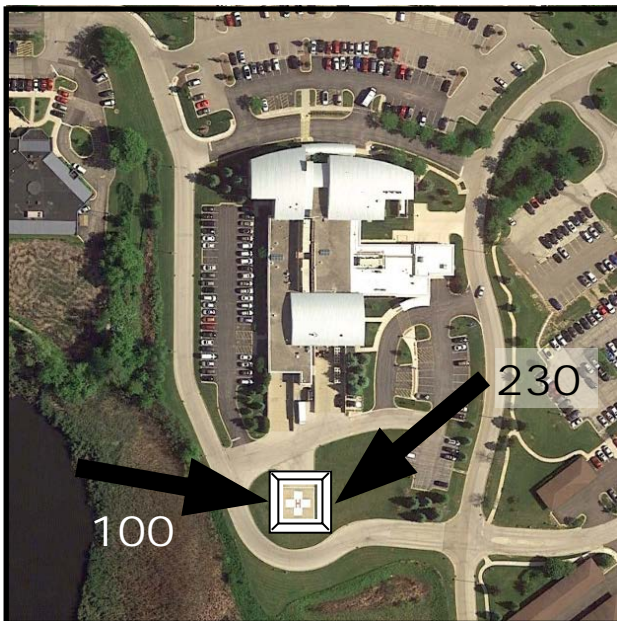
1050 Red Oak Ln.

Lindenhurst, IL 60046

TLOF: 40' X 40'

SPECIAL NOTES:

New Photo



Amended: 2016-10-16

PAGE 81

Lindenhurst – Vista Surgery Center

8IS8

Litchfield – St. Francis Hospital

73IL

NAV

Lat: N 39° 10.9'
Long: W 89° 38.4'

COMM

Freq: 155.340
PL: 85.4 W: 07
Ph: 217-324-2191

LZ INFO

Elev: 690' Surface
Lighting: Perimeter
Beacon: No
Wind Sock: Yes – Lighted

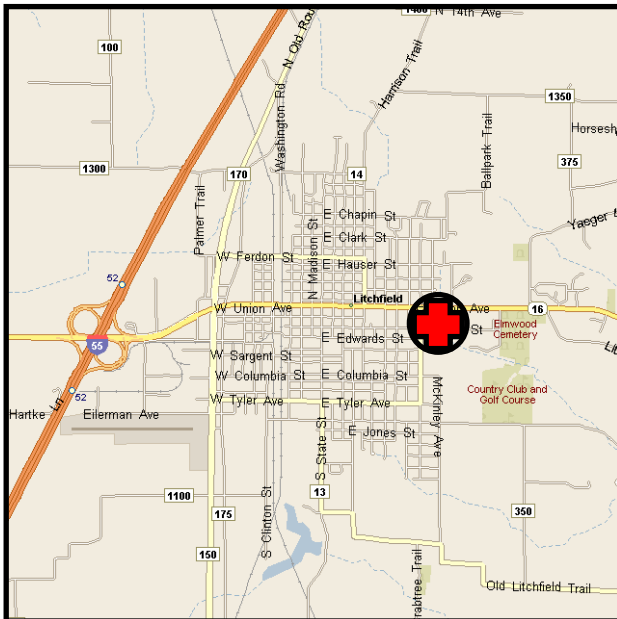
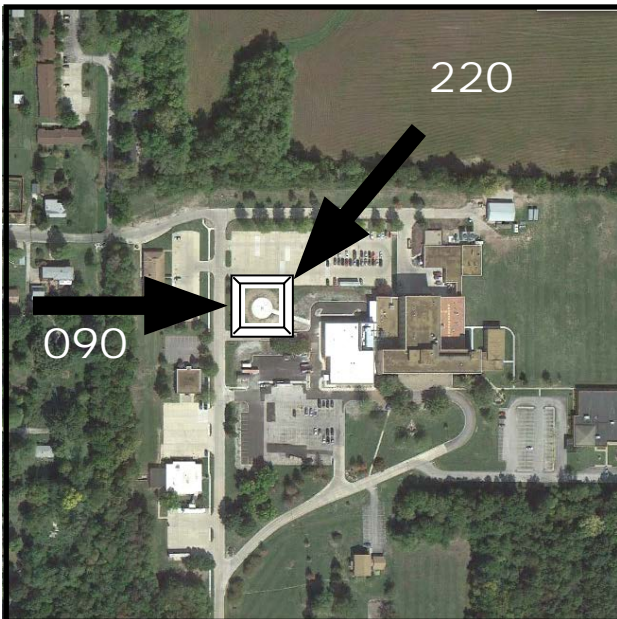
FACILITY

St. Francis Hospital
1215 Franciscan Dr.
Litchfield, IL 62056

TLOF: 50' X 50'

SPECIAL NOTES:

New ER building on east side of pad.
New Photo



Amended: 2016-10-16

PAGE 82

Macomb – McDonough District Hospital

46IL

NAV

Lat: N 40° 26.7'

Long: W 90° 39.8'

COMM

Freq: 155.340

PL: 100.0 W:14

Ph: 309-833-4101

LZ INFO

Elev:

685' Surface

Lighting:

Perimeter

Beacon:

Yes

Wind Sock:

Yes – Lighted

FACILITY

McDonough District

Hospital

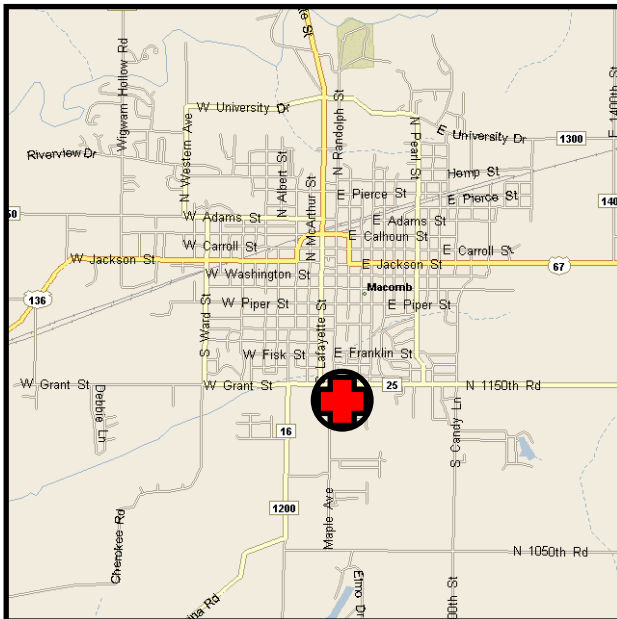
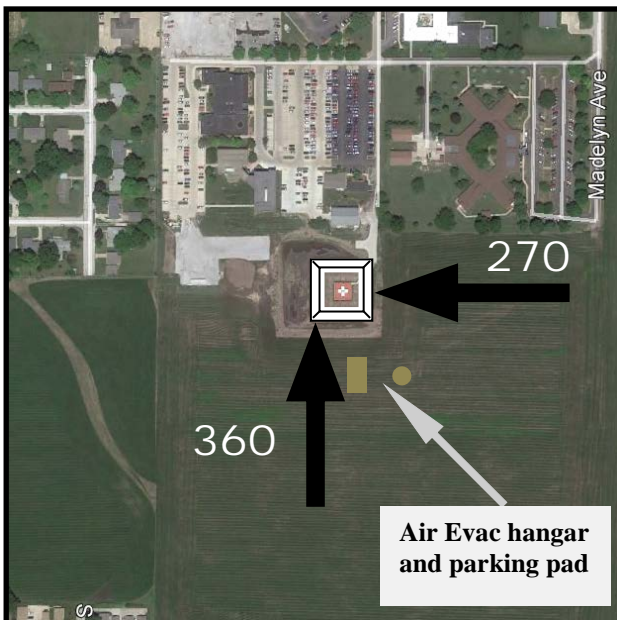
525 E. Grant

Macomb, IL 61455

TLOF: 44' X 44'

SPECIAL NOTES:

Hangar and parking pad south of heliport are for Air Evac only



Amended: 2017-06-30

PAGE 83

Macomb – McDonough District Hospital

46IL

Marion – Heartland Regional Medical Center 5IL6

NAV

Lat: N 37° 44.6'
Long: W 88° 59.6'

COMM

Freq: 155.340
PL: 131.8 **W:**24
Ph: 618-998-7000

LZ INFO

Elev:
451' Surface
Lighting:
Perimeter
Beacon:
No
Wind Sock:
Yes – Lighted

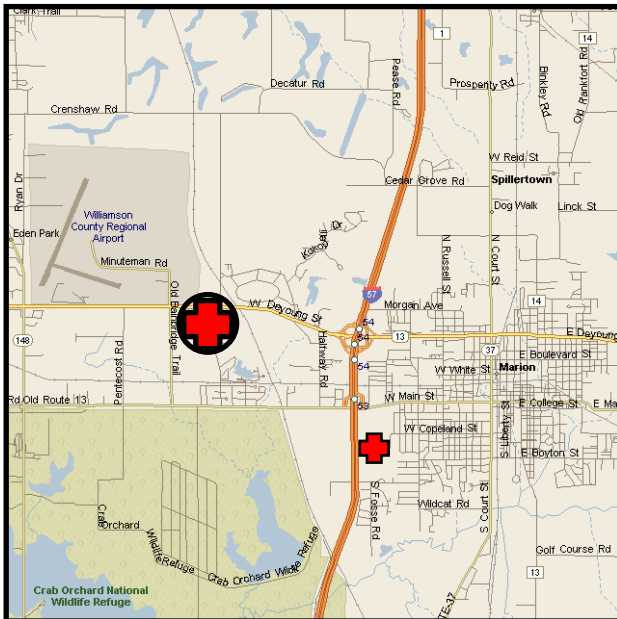
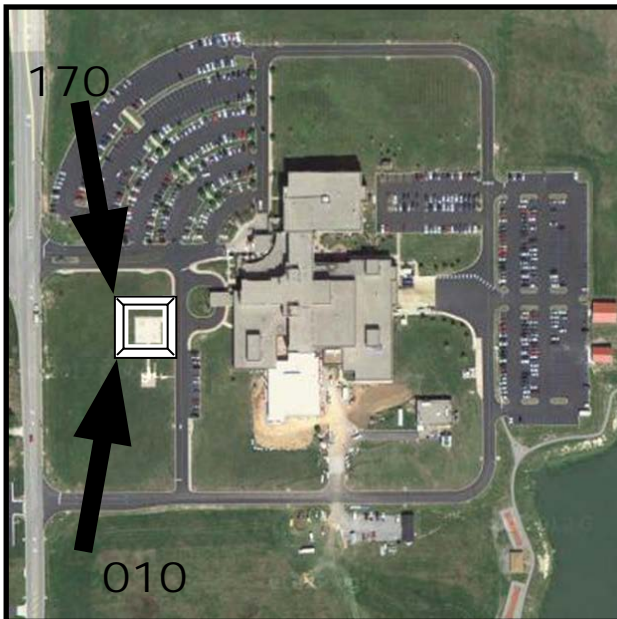
FACILITY

Heartland Regional
Medical Center
3333 West Deyoung Street
Marion, IL 62959

TLOF: 55' X 55'

SPECIAL NOTES:

AIREVAC Heliport Base
1500' South: Not for
Transient Use



Amended: 2012-05-29

PAGE 84

Marion – VA Medical Center

58IS

NAV

Lat: N 37° 43.3'

Long: W 88° 57.3'

COMM

Freq:

PL: W:

Ph: 618-997-5311

LZ INFO

Elev:

464' Surface

Lighting:

Perimeter

Beacon:

Yes

Wind Sock:

Yes – Lighted

FACILITY

Marion VA Medical Center

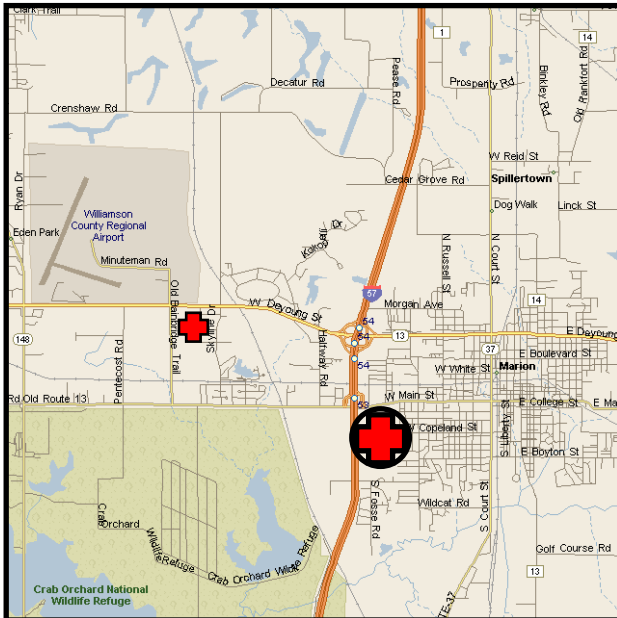
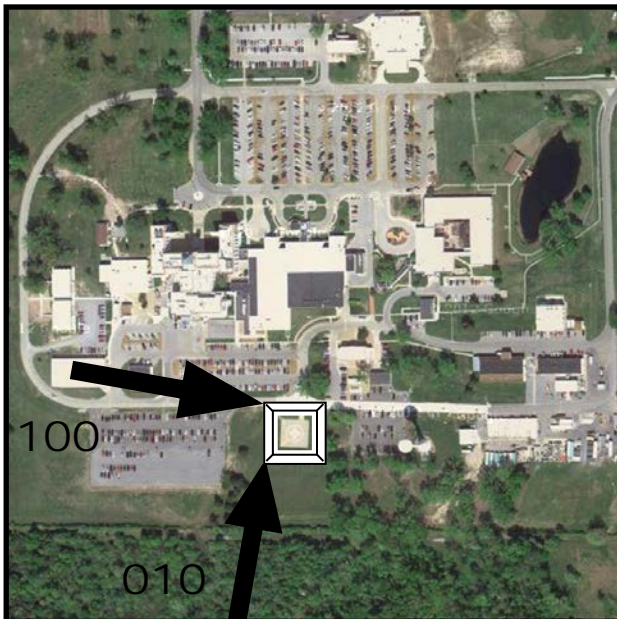
2401 W. Main St.

Marion, IL 62959

TLOF: 50' X 50'

SPECIAL NOTES:

New Photo



Amended: 2012-05-29

PAGE 85

Maryville – Anderson Hospital

8IS9

NAV

Lat: N 38° 44.2'
Long: W 89° 56.8'

COMM

Freq: 155.340
PL: 91.5 W: 11
Ph: 618-288-5711

LZ INFO

Elev:
590' Surface
Lighting:
Flood
Beacon:
Yes
Wind Sock:
Yes – Lighted

FACILITY

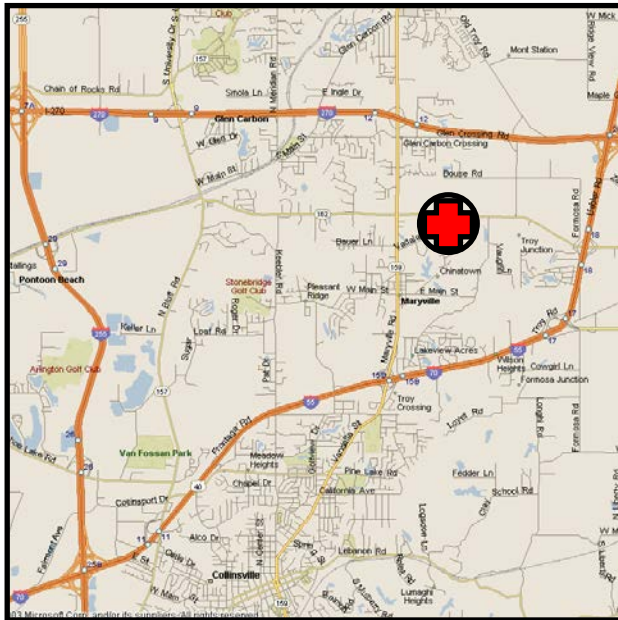
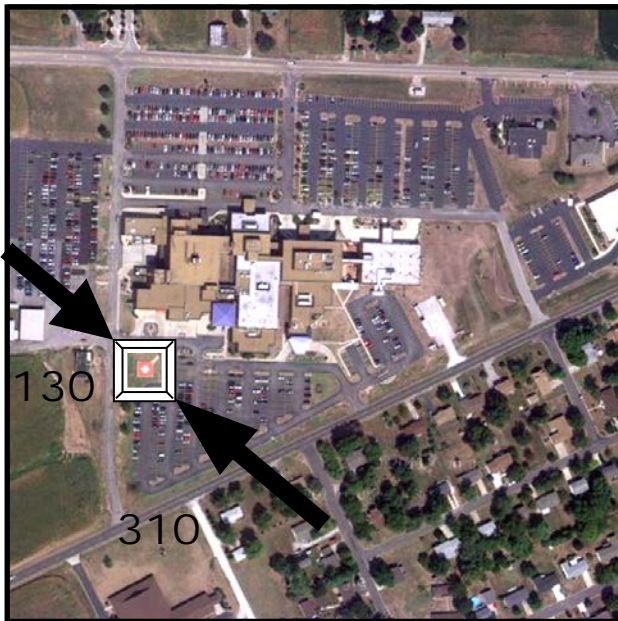
Anderson Hospital
6800 State Route 162
Maryville, IL 62062

TLOF: 40' X 40'

SPECIAL NOTES:

Guyed TWR: 299' AGL,
1450' SW (264°)

New Photo



Amended: 2012-05-29

PAGE 86

NAV

Lat: N 39° 29.4'
Long: W 88° 16.4'

COMM

Freq: 155.340
PL: 100.0 W:14
Ph: 217-258-2525

LZ INFO

Elev:
702' Surface
Lighting:
Flood
Beacon:
Yes
Wind Sock:
Yes – Lighted

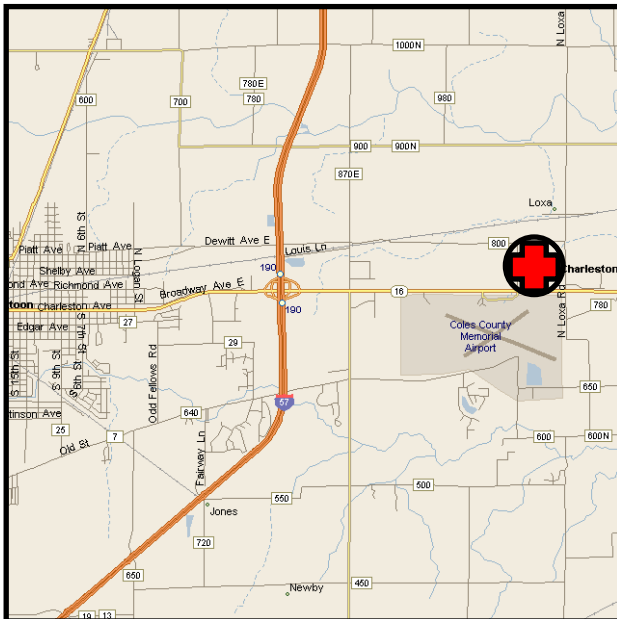
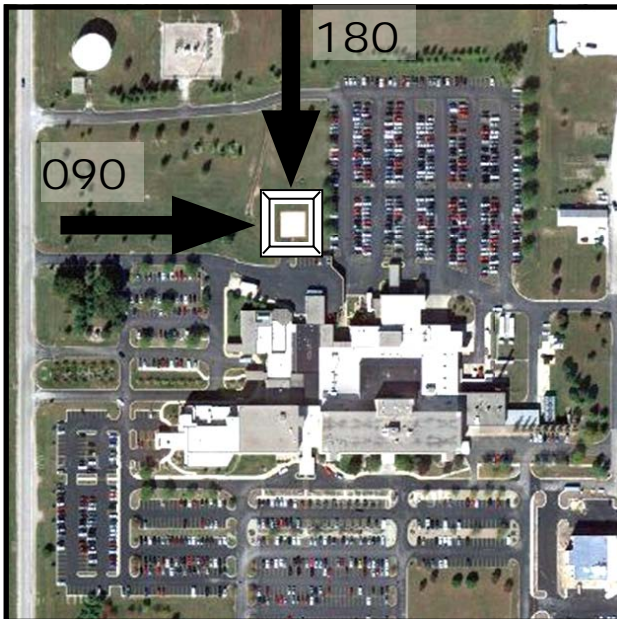
FACILITY

Sarah Bush Lincoln Health Center
1000 Health Center Dr.
Mattoon, IL 61938

TLOF: 50' X 50'

SPECIAL NOTES:

Correct elevation, change approach from 050 to 090



Amended: 2015-12-29

PAGE 87

Maywood – Loyola University Medical Ctr.

OIL1

NAV

Lat: N 41° 51.7'
Long: W 87° 50.2'

COMM

Freq: 155.340
PL: 103.5 W:15
Ph: 708-216-9000

LZ INFO

Elev:
620' Surface
Lighting:
Perimeter, Flood
Beacon:
Yes
Wind Sock:
Yes – Lighted

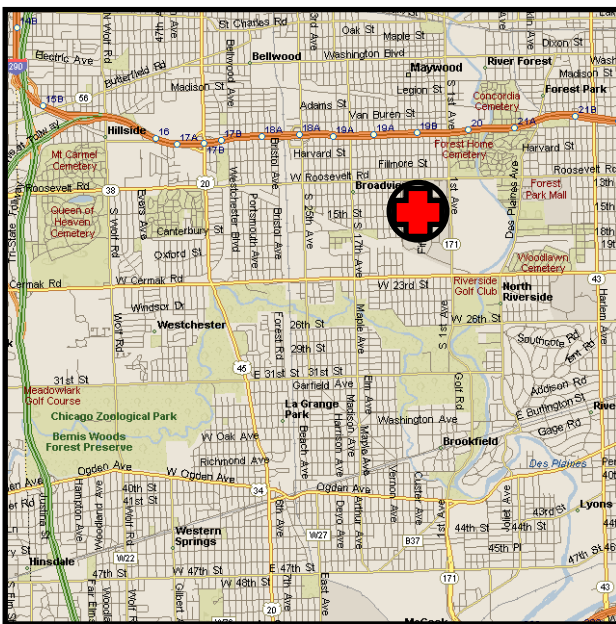
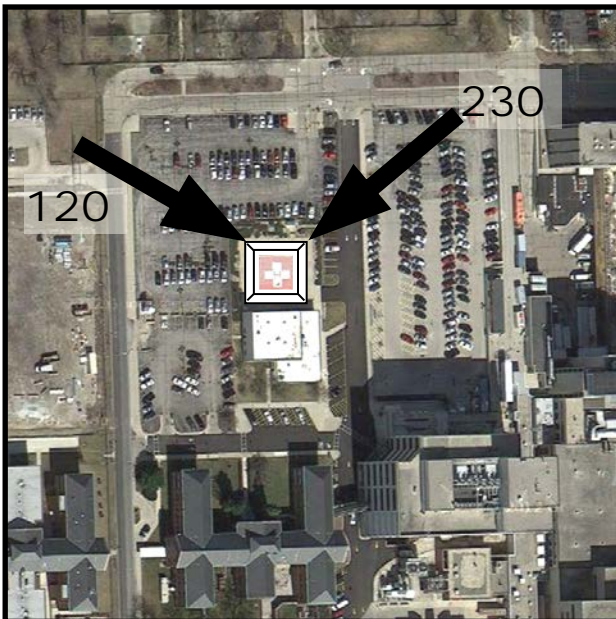
FACILITY

Loyola University Medical
Center
2160 South First Ave.
Maywood, IL 60153

TLOF: 50' X 50'

SPECIAL NOTES:

New Photo



Amended: 2012-05-29

PAGE 88

Maywood – Loyola University Medical Ctr.

OIL1

McHenry – Centegra Hospital McHenry

5IS8

NAV

Lat: N 42° 19.0'

Long: W 88° 16.8'

COMM

Freq: 155.400

PL: 77.0 W: 04

Ph: 815-344-5000

LZ INFO

Elev:

815' Surface

Lighting:

Perimeter

Beacon:

Yes

Wind Sock:

Yes – Lighted

FACILITY

Centegra Hospital

McHenry

4201 Medical Center Dr.

McHenry, IL 60050

TLOF: 65' X 65'

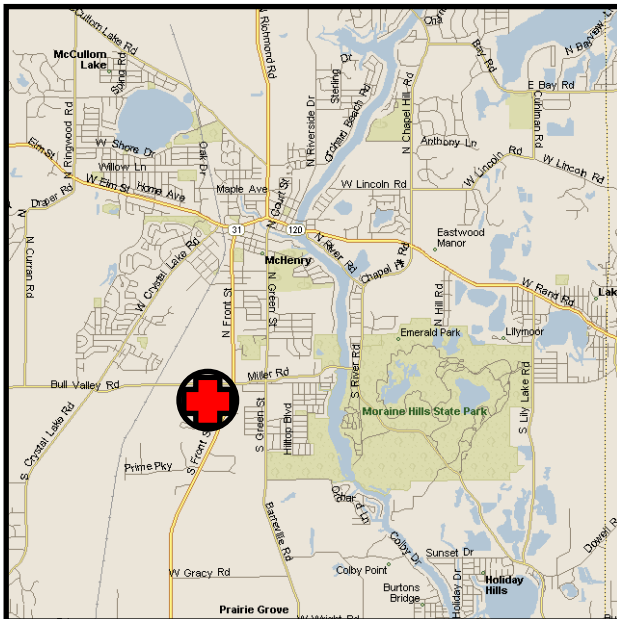
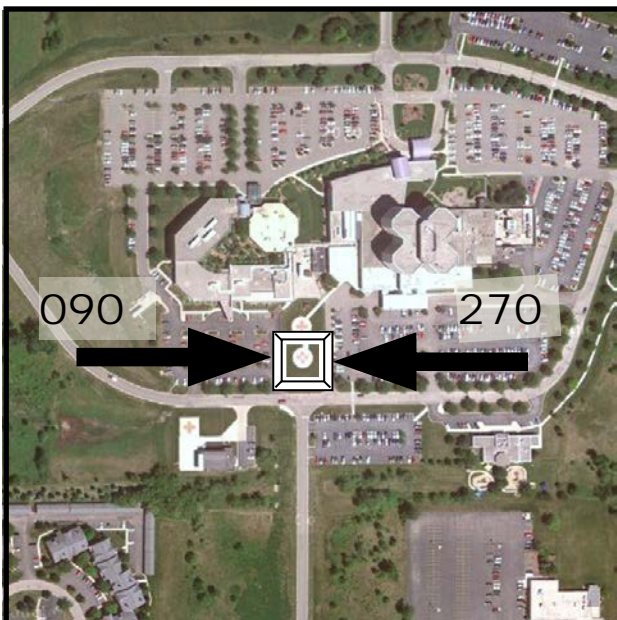
SPECIAL NOTES:

*** South Heliport next to Hangar NOT for Transient Use***

Must Call Flight Comm

Center Prior to flight:

800-344-1000



Amended: 2013-01-24

PAGE 89

McLeansboro – Hamilton Memorial Hospital



NAV

Lat: N 38° 05.2'
Long: W 88° 32.4'

COMM

Freq: 155.340
PL: W:
Ph: 618-643-2361

LZ INFO

Elev:
435' Surface
Lighting:
Perimeter, Flood
Beacon:
Yes
Wind Sock:
Yes – Lighted

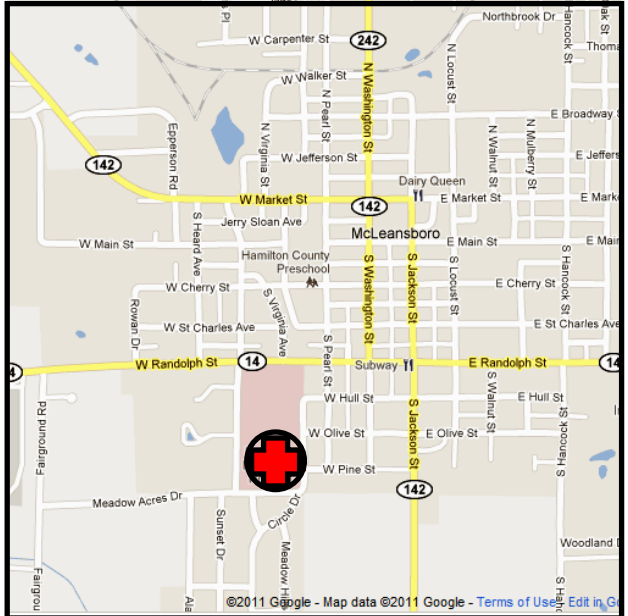
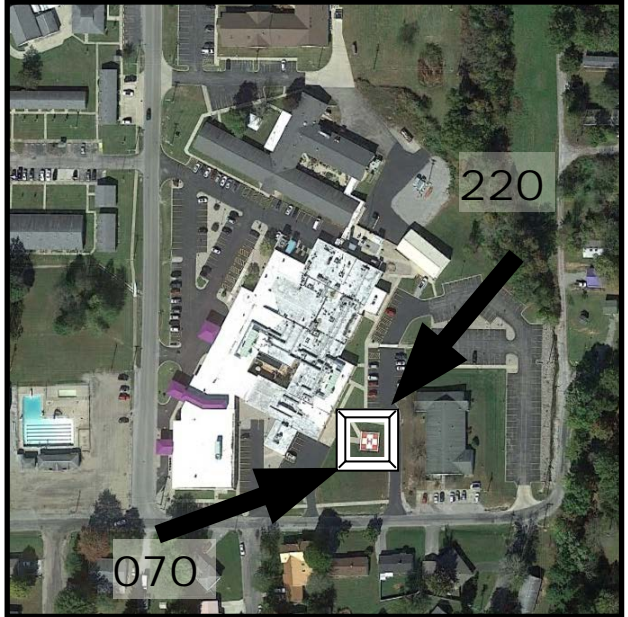
FACILITY

Hamilton Memorial
Hospital
611 S. Marshall
McLeansboro, IL 62859

TLOF: 30' X 30'

SPECIAL NOTES:

New Photo



Amended: 2017-07-27

PAGE 90



Melrose Park –Loyola Medicine Gottlieb Mem Hosp 14LL

NAV

Lat: N 41° 54.7'
Long: W 87° 50.6'

COMM

Freq: 155.340
PL: 146.2 **W:**27
Ph: 708-681-3200

LZ INFO

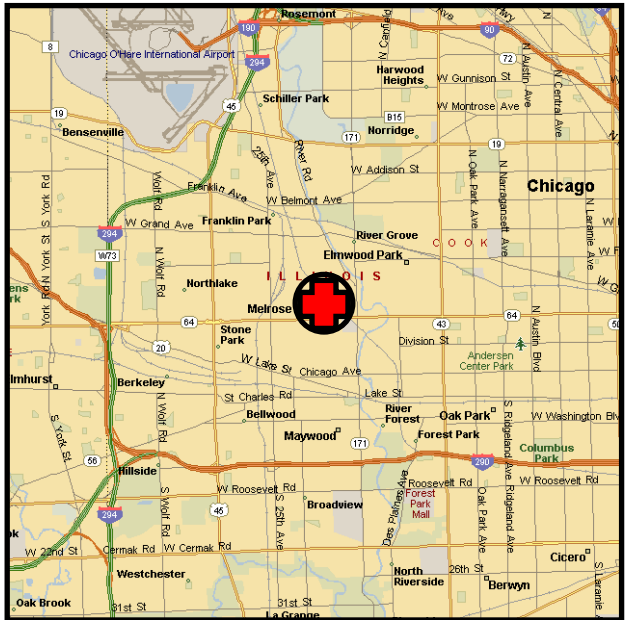
Elev:
688' Roof
Lighting:
Perimeter
Beacon:
Yes
Wind Sock:
Yes – Lighted

FACILITY

Loyola Medicine Gottlieb
Memorial Hospital
701 W. North Ave.
Melrose Park, IL 60160

SPECIAL NOTES:

Name change



Amended: 2018-08-06

PAGE 91

Melrose Park –Loyola Medicine Gottlieb Mem Hosp 14LL

Mendota – OSF Saint Paul Medical Center

14IL

NAV

Lat: N 41° 33.15'

Long: W 89° 05.18

COMM

Freq: 155.340

PL: 146.2 W: 27

Ph: 815-539-7461

LZ INFO

Elev:

773' Surface

Lighting:

Perimeter & Flood

Beacon:

No

Wind Sock:

Yes – Lighted

FACILITY

OSF Saint Paul Medical Center

1401 E. 12th St

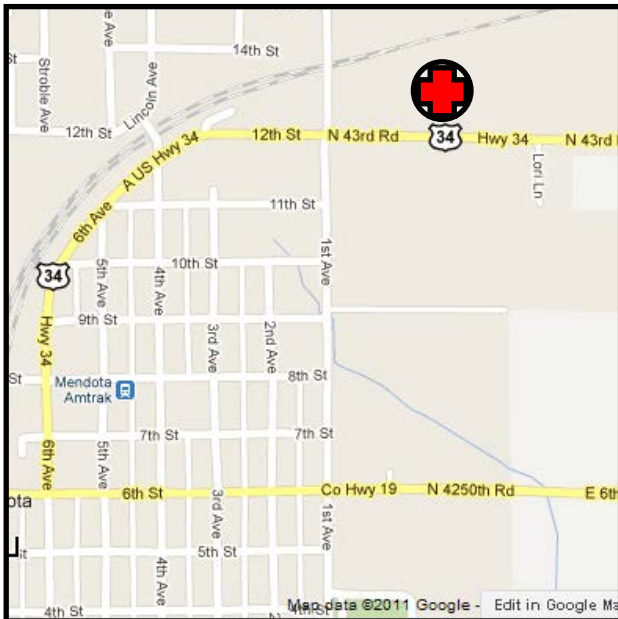
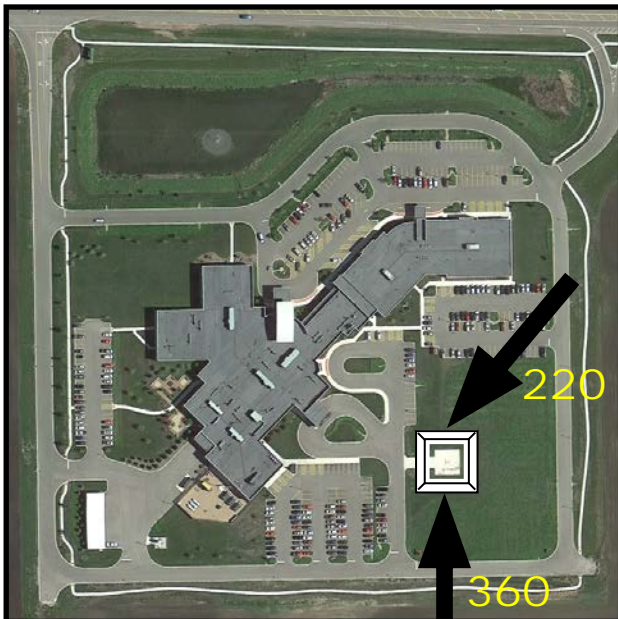
Mendota, IL 61342

TLOF: 45' X 45'

SPECIAL NOTES:

No beacon, new photo

Name change - was Mendota Community Hospital



Amended: 2017-11-02

PAGE 92

NAV

Lat: N 41° 28.0'
Long: W 90° 31.9'

COMM

Freq: 155.340
PL: W:
Ph: 309-779-2113

LZ INFO

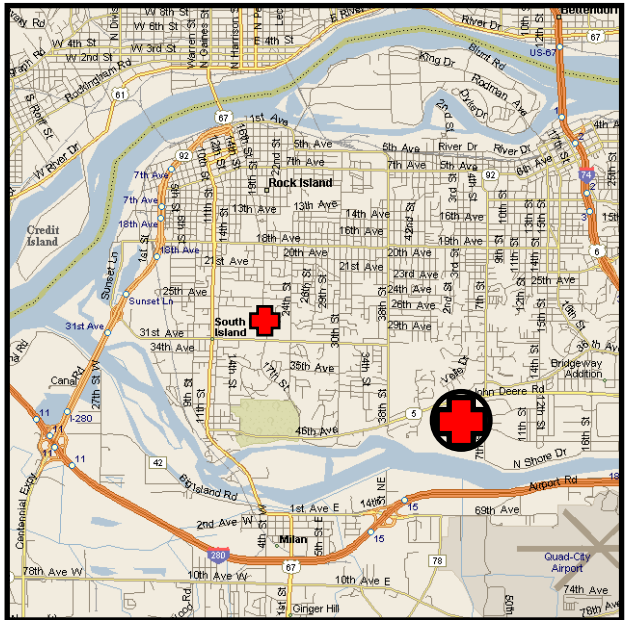
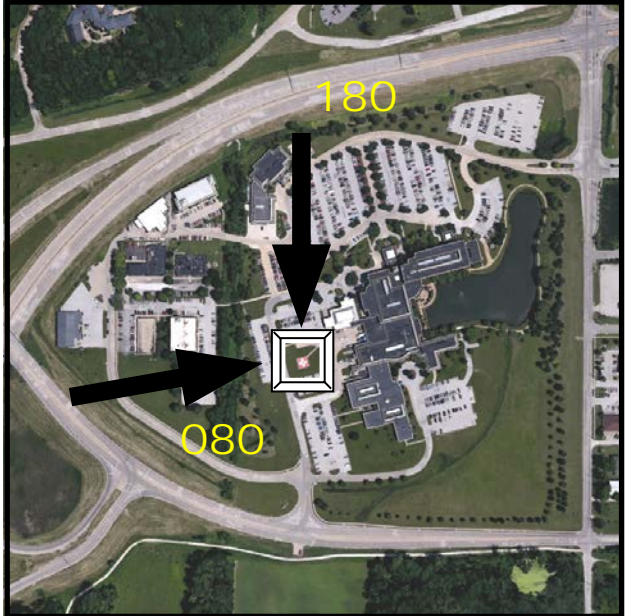
Elev:
570' Surface
Lighting:
Perimeter
Beacon:
No
Wind Sock:
Yes – Lighted

FACILITY

Trinity Medical Center
500 John Deere Road
Moline, IL 61265
TLOF: 40' X 40'

SPECIAL NOTES:

Change Phone Number,
New Photo



Amended: 2015-10-16

PAGE 93

Monmouth – OSF Holy Family Medical Center LLØ1

NAV

Lat: N 40° 55.3'
Long: W 90° 39.5'

COMM

Freq: 155.340
PL: 71.9 **W:**02
Ph: 309-734-1400

LZ INFO

Elev:
760' Surface
Lighting:
Flood
Beacon:
No
Wind Sock:
Yes – Lighted

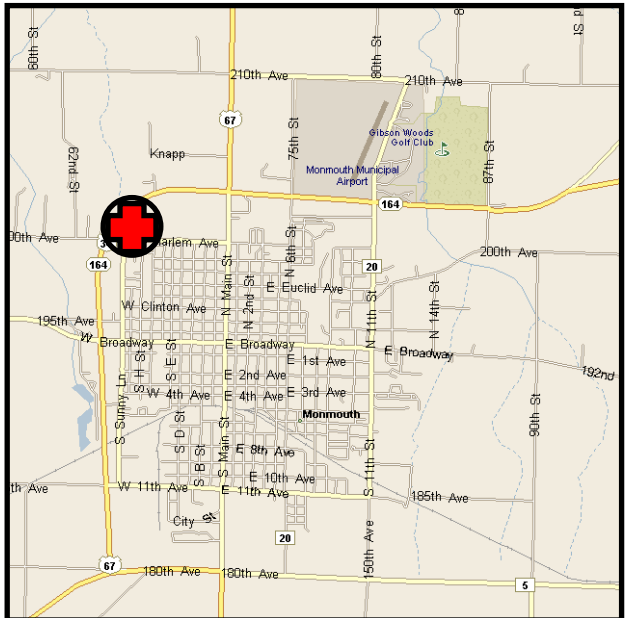
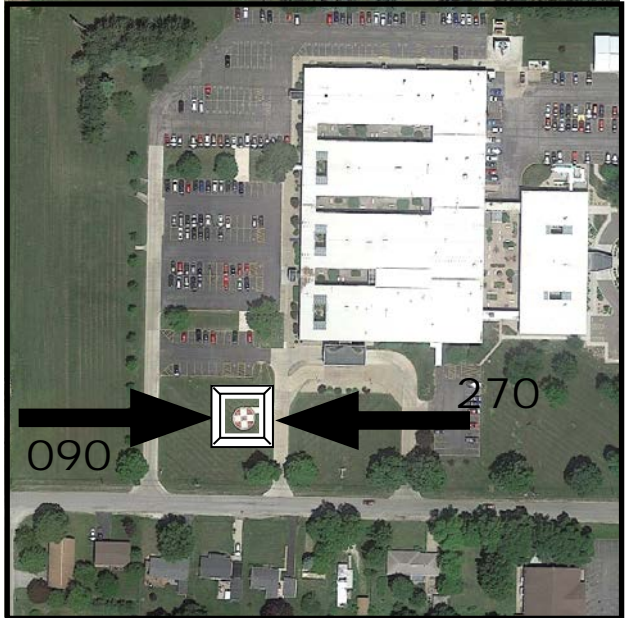
FACILITY

OSF Holy Family Medical Center
1000 W. Harlem
Monmouth, IL 61462

TLOF: 30' X 30'

SPECIAL NOTES:

New photo



Amended: 2014-08-08

PAGE 94

Monmouth – OSF Holy Family Medical Center LLØ1

Monticello – Kirby Medical Center

40LL

NAV

Lat: N 40° 03.60'
Long: W 88° 33.60'

COMM

Freq: 155.340
PL: 127.3 **W:** 23
Ph: 217-762-6300

LZ INFO

Elev:
673' Surface
Lighting:
Perimeter
Beacon:
Yes
Wind Sock:
Yes – Lighted

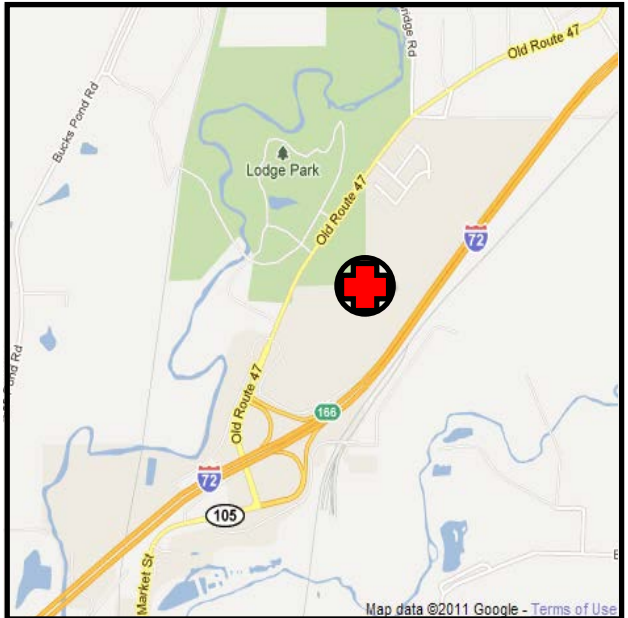
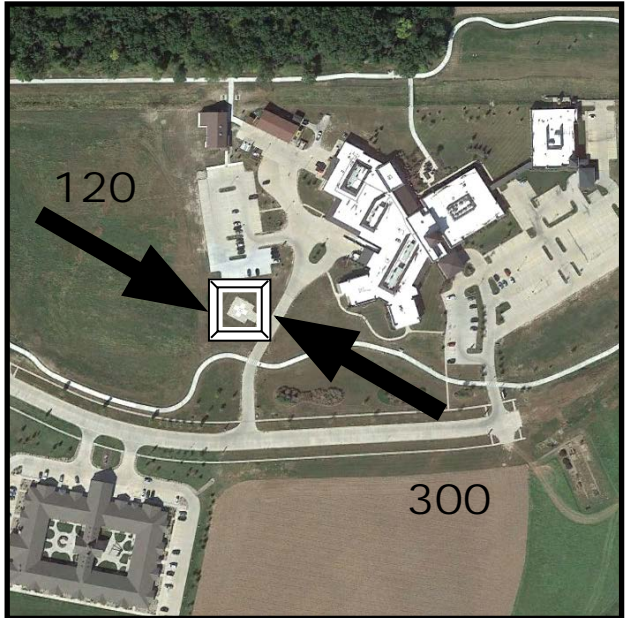
FACILITY

Kirby Medical Center
1000 Medical Center Drive
Monticello, IL 61853

TLOF: 44' X 44'

SPECIAL NOTES:

FENCE 42' FROM
CENTER OF PAD



Amended: 2017-07-27

PAGE 95

Morris – Morris Hospital

LLØ4

NAV

Lat: N 41° 22.2'
Long: W 88° 25.6'

COMM

Freq: 155.340
PL: 91.5 W:11
Ph: 815-942-2932

LZ INFO

Elev:
512' Surface
Lighting:
Perimeter
Beacon:
Yes
Wind Sock:
Yes – Lighted

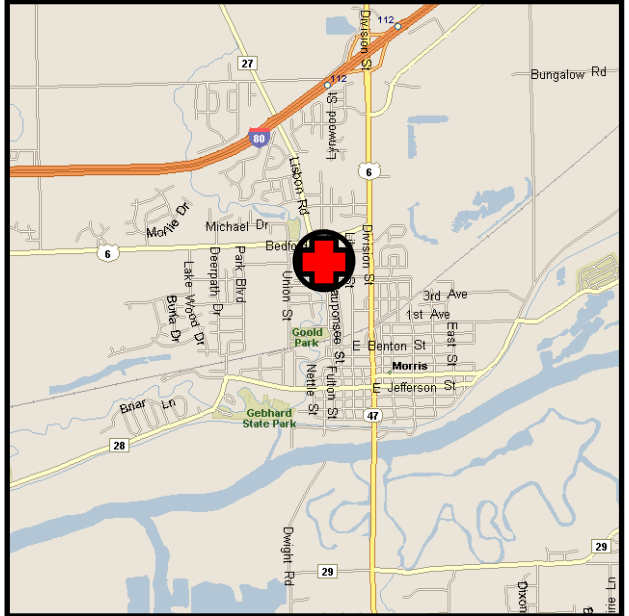
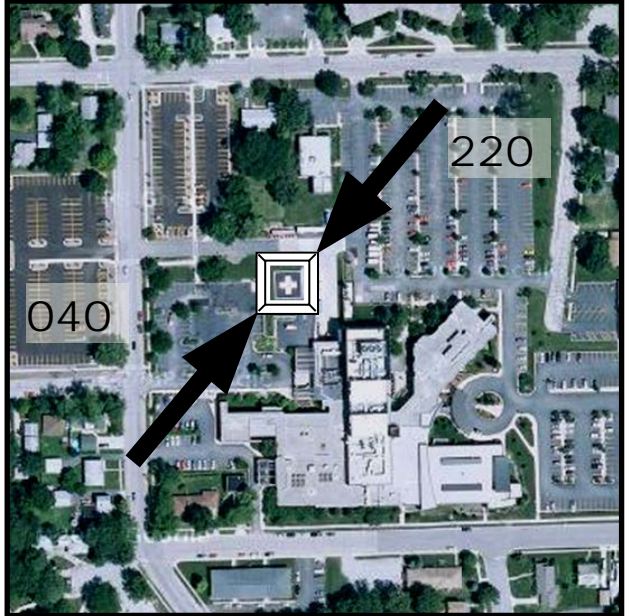
FACILITY

Morris Hospital
150 W. High St.
Morris, IL 60450

TLOF: 40' X 40'

SPECIAL NOTES:

New Photo



Amended: 2012-05-29

PAGE 96

Morris – Morris Hospital

LLØ4

Morrison – Community Hospital

5LL9

NAV

Lat: N 41° 48.6'

Long: W 89° 57.4'

COMM

Freq: 155.340

PL: 97.4 W:13

Ph: 815-772-4003

LZ INFO

Elev:

634' Surface

Lighting:

Perimeter

Beacon:

Yes

Wind Sock:

Yes – Lighted

FACILITY

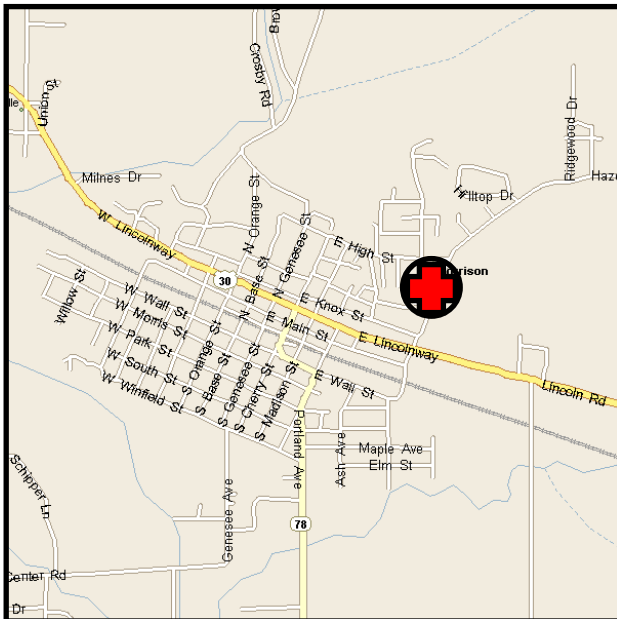
Morrison Community
Hospital

303 N. Jackson St.
Morrison, IL 61270

TLOF: 40' X 40'

SPECIAL NOTES:

Beacon and new photo



Amended: 2014-08-08

PAGE 97

Mt. Carmel – Wabash General Hospital

67IS

NAV

Lat: N 38° 25.3'
Long: W 87° 46.2'

COMM

Freq: 155.340
PL: 100.0 W:14
Ph: 618-262-8621

LZ INFO

Elev:
469' Surface
Lighting:
Flood
Beacon:
Yes
Wind Sock:
Yes – Lighted

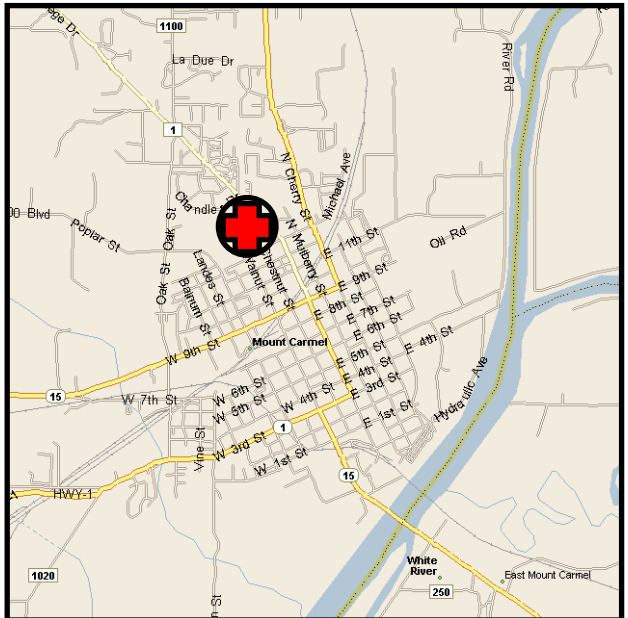
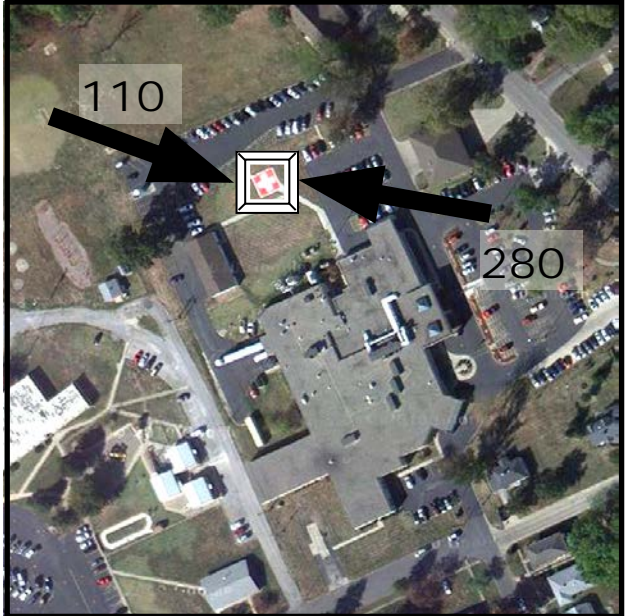
FACILITY

Wabash General Hospital
1418 College Dr.
Mt. Carmel, IL 62863

TLOF: 30' X 30'

SPECIAL NOTES:

New Photo



Amended: 2012-05-29

PAGE 98

Mt. Vernon – Crossroads Community Hosp. 75IL

NAV

Lat: N 38° 18.7'
Long: W 88° 56.1'

COMM

Freq: 155.340
PL: 127.3 W:23
Ph: 618-244-5500

LZ INFO

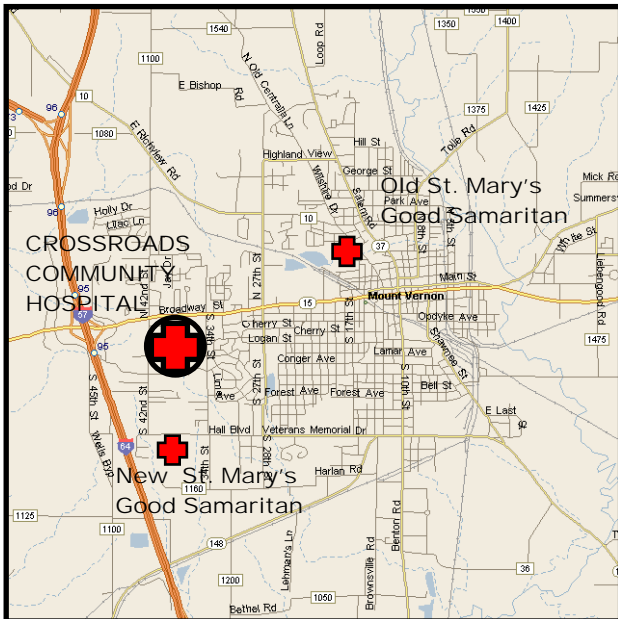
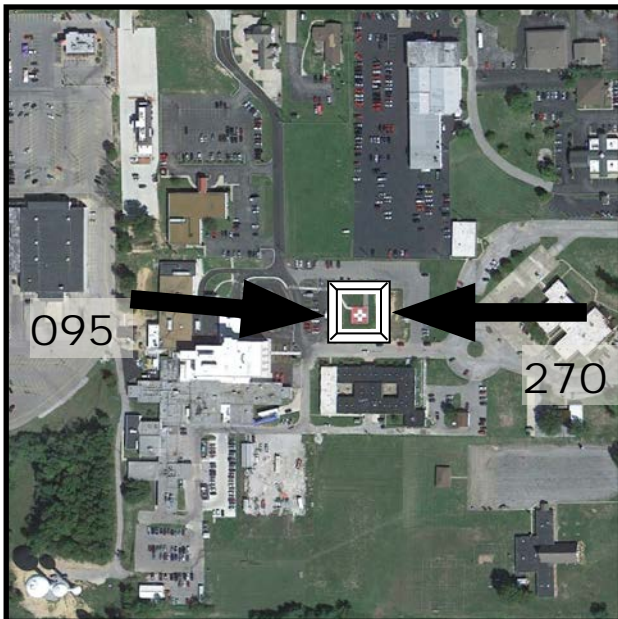
Elev:
545' Surface
Lighting:
Perimeter
Beacon:
No
Wind Sock:
Yes – Lighted

FACILITY

Crossroads Community
Hospital
#8 Doctors Park Road
Mt. Vernon, IL 62864
TLOF: 40' X 40'

SPECIAL NOTES:

Caution: New St. Mary's
Good Samaritan Hospital
helipad is 1 mile directly
South



Amended: 2015-10-16

PAGE 99

Mt. Vernon – St. Mary's Good Samaritan

4IL6

NAV

Lat: N 38° 17.83'
Long: W 88° 56.26'

COMM

Freq: 155.340
PL: 118.8 W:21
Ph: 618-242-4600

LZ INFO

Elev:
501 Surface
Lighting:
Pwerimeter
Beacon:
Yes
Wind Sock:
Yes – Lighted

FACILITY

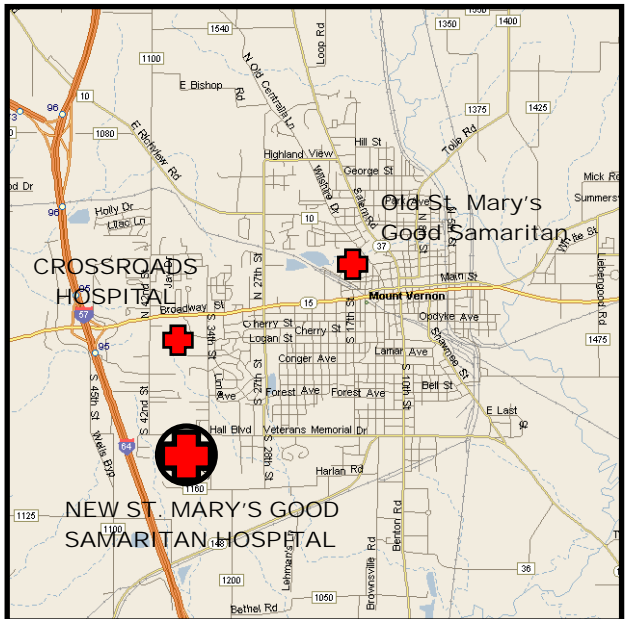
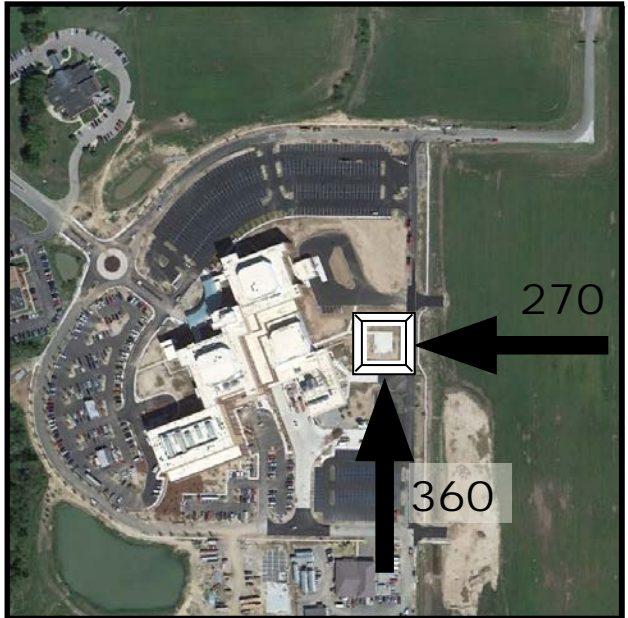
St. Mary's Good Samaritan
1 Good Samaritan Way.
Mt. Vernon, IL 62864

TLOF: 48' X 48'

SPECIAL NOTES:

Change in elevation and
lighting

Caution: Crossroads
Community Hospital
helipad is 1 mile directly
North



Amended: 2018-08-06

PAGE 100

Mt. Vernon – St. Mary's Good Samaritan

4IL6

Murphysboro – St. Joseph Memorial Hosp.

IS38

NAV

Lat: N 37° 46.4'

Long: W 89° 19.5'

COMM

Freq: 155.340

PL: 114.8 **W:**18

Ph: 618-684-3156

LZ INFO

Elev:

405' Surface

Lighting:

Perimeter

Beacon:

No

Wind Sock:

Yes

FACILITY

St. Joseph Memorial
Hospital

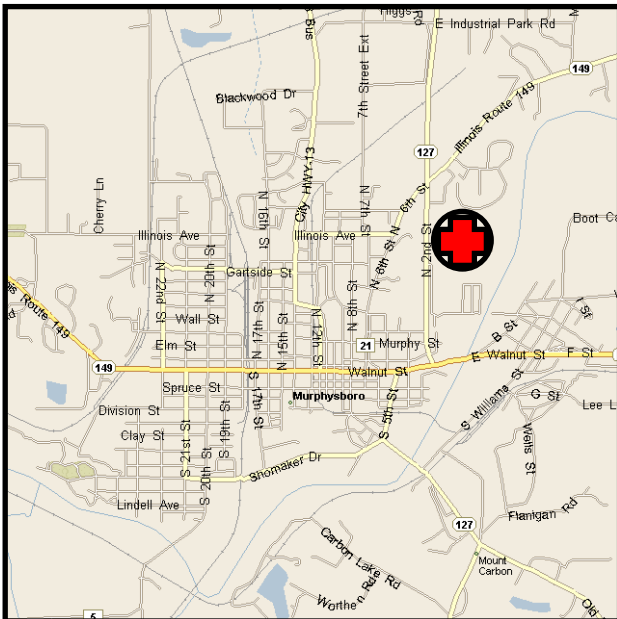
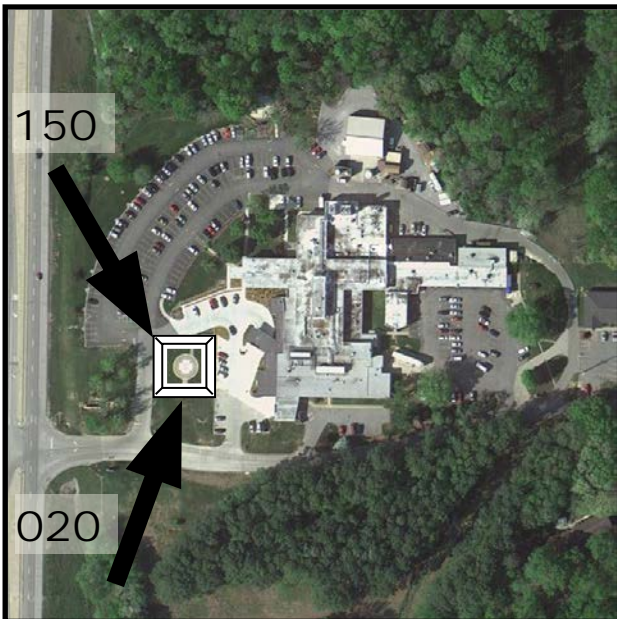
2 South Hospital Dr.

Murphysboro, IL 62966

TLOF: 40' X 40'

SPECIAL NOTES:

New Photo



Amended: 2012-06-04

PAGE 101

Murphysboro – St. Joseph Memorial Hosp.

IS38

Naperville – Edward Hospital

LL11

NAV

Lat: N 41° 45.6'

Long: W 88° 09.2'

COMM

Freq: 155.340

PL: 127.3 W:23

Ph: 630-527-3000

LZ INFO

Elev:

695' Surface

Lighting:

Perimeter

Beacon:

Yes

Wind Sock:

Yes – Lighted

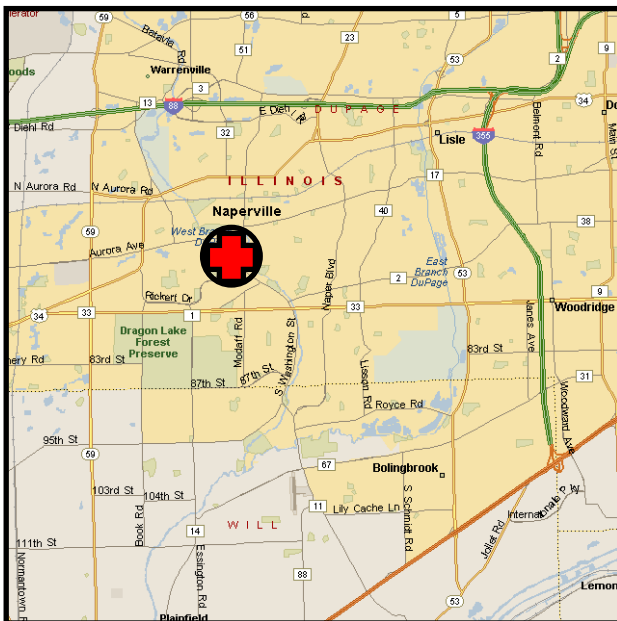
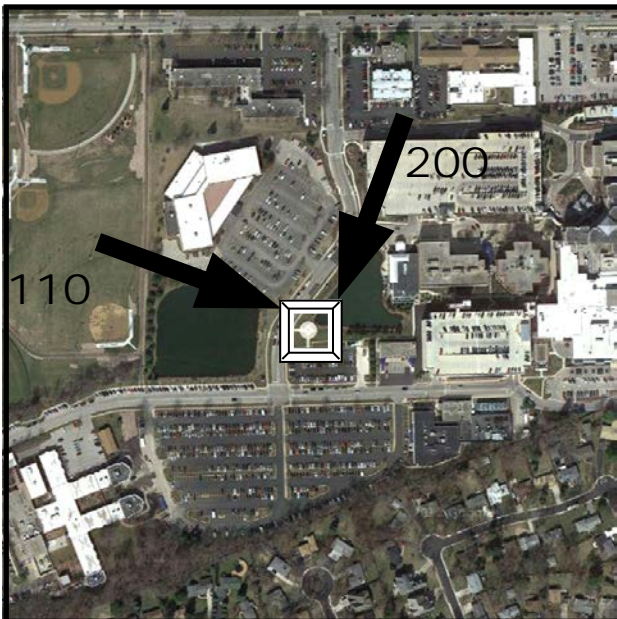
FACILITY

Edward Hospital
801 S. Washington St.
Naperville, IL 60566

TLOF: 50' X 50'

SPECIAL NOTES:

New Photo



Amended: 2012-06-04

PAGE 102

Naperville – Edward Hospital

LL11

Nashville – Washington County Hospital

2LL8

NAV

Lat: N 38° 20.3'

Long: W 89° 23.6'

COMM

Freq: 155.340

PL: 71.9 W:02

Ph: 618-327-8236

LZ INFO

Elev:

700' Surface

Lighting:

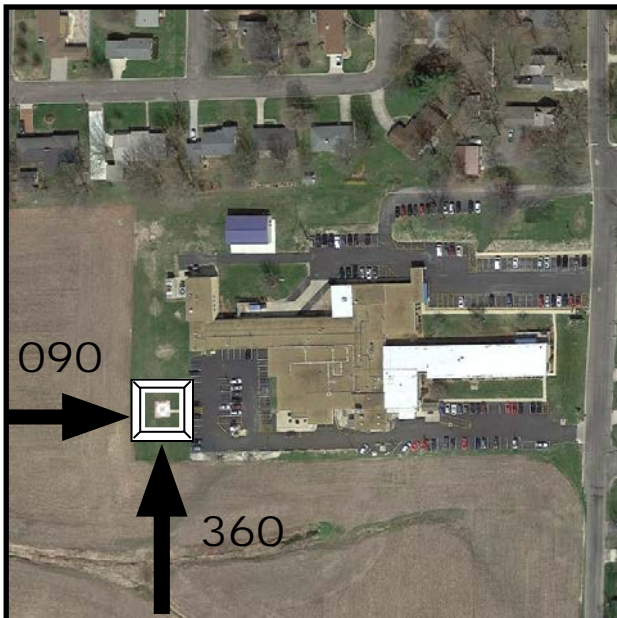
Perimeter

Beacon:

No

Wind Sock:

Yes – Lighted



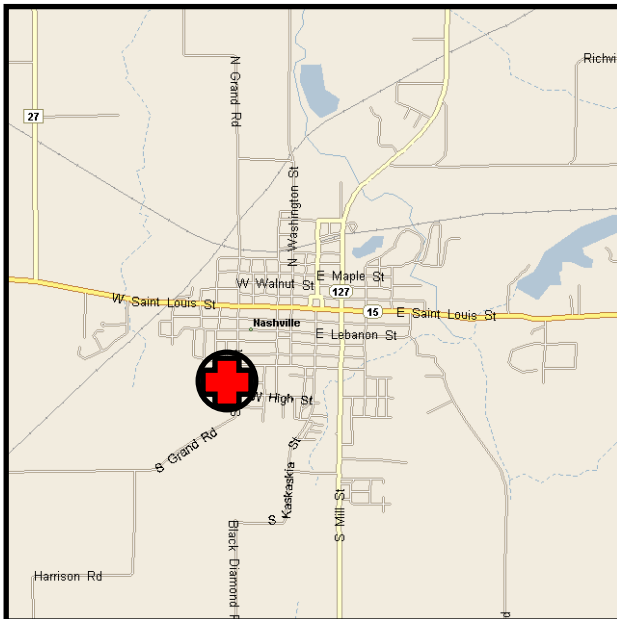
FACILITY

Washington County
Hospital

705 S. Grand Ave.

Nashville, IL 62263

TLOF: 25' X 25'



Amended: 2015-10-16

PAGE 103

Nashville – Washington County Hospital

2LL8

SPECIAL NOTES:

New Photo

New Lenox – Silver Cross Hospital

9IL9

NAV

Lat: N 41° 32.74'
Long: W 87° 58.92'

COMM

Freq: 155.340
PL: 110.9 W: 17
Ph: 815-300-1100

LZ INFO

Elev: 650' Surface
Lighting: Perimeter, Flood
Beacon: Yes
Wind Sock: Yes – Lighted

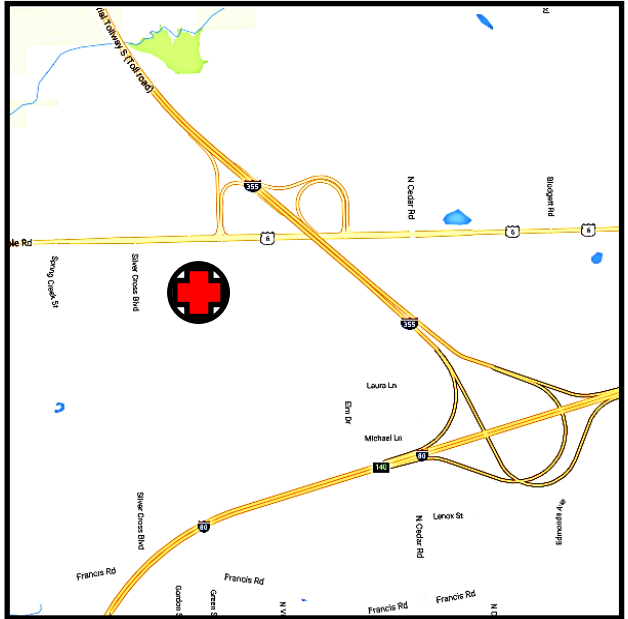
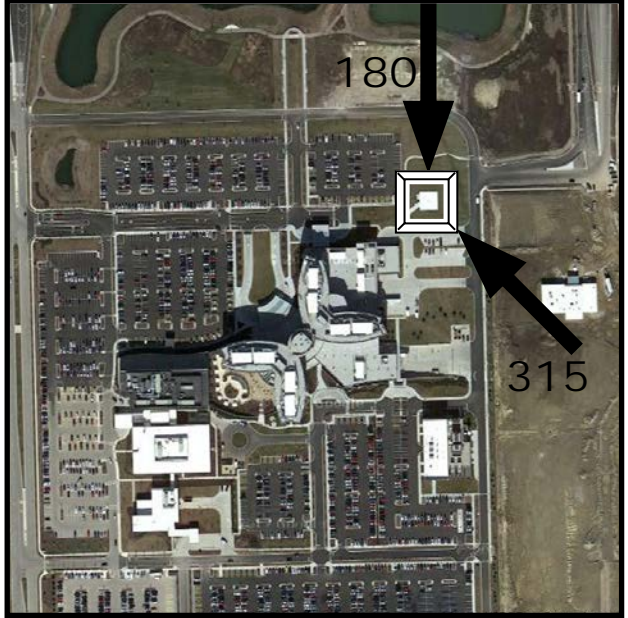
FACILITY

Silver Cross Hospital
1900 Silver Cross Blvd.
New Lenox, IL 60451

TLOF: 50' X 50'

SPECIAL NOTES:

New Map



Amended: 2016-08-29

PAGE 104

Normal – Advocate BroMenn Medical Center IL25

NAV

Lat: N 40° 29.8'

Long: W 88° 59.5'

COMM

Freq: 155.340

PL: 94.8 **W:**12

Ph: 309-454-1400

LZ INFO

Elev:

810' Roof

Lighting:

Perimeter

Beacon:

Yes

Wind Sock:

Yes – Lighted

FACILITY

Advocate BroMenn

Medical Center

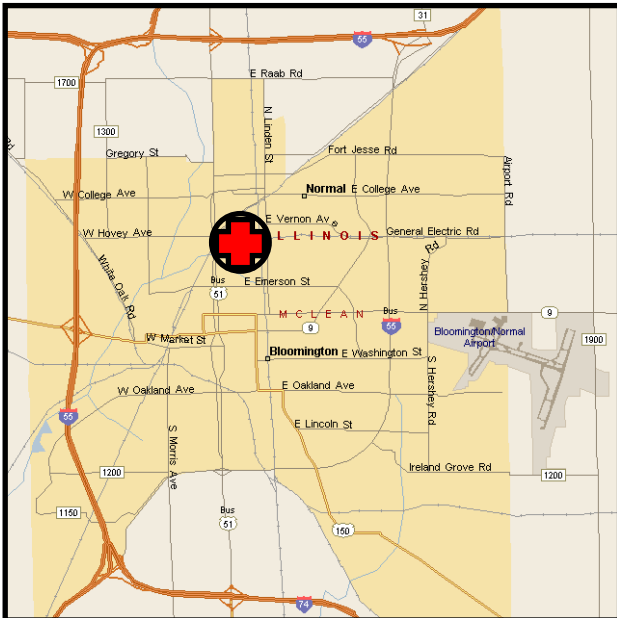
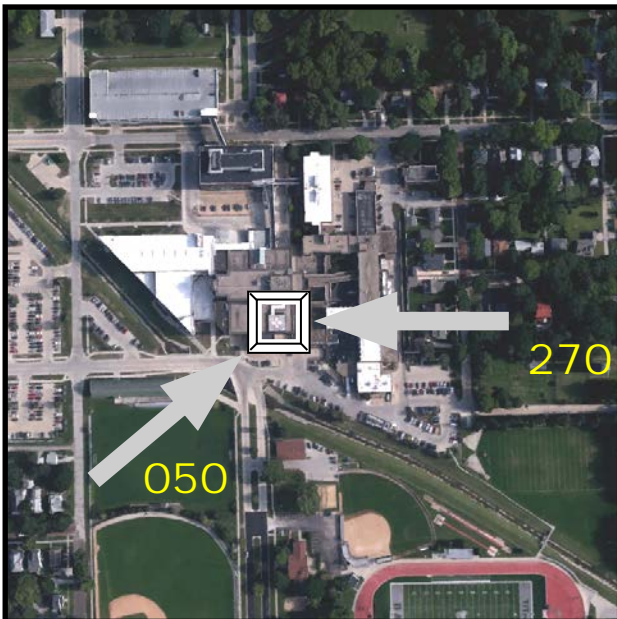
1304 Franklin Ave.

Normal, IL 61702

TLOF: 40' X 40'

SPECIAL NOTES:

New Photo



Amended: 2015-10-16

PAGE 105

Normal – Advocate BroMenn Medical Center IL25

Oak Lawn – Advocate Christ Medical Center IL77

NAV

Lat: N 41° 43.4'
Long: W 87° 44.0'

COMM

Freq: 155.340
PL: 131.8 W:24
Ph: 708-684-8000

LZ INFO

Elev:
675' Roof
Lighting:
Perimeter
Beacon:
Yes
Wind Sock:
Yes – Lighted

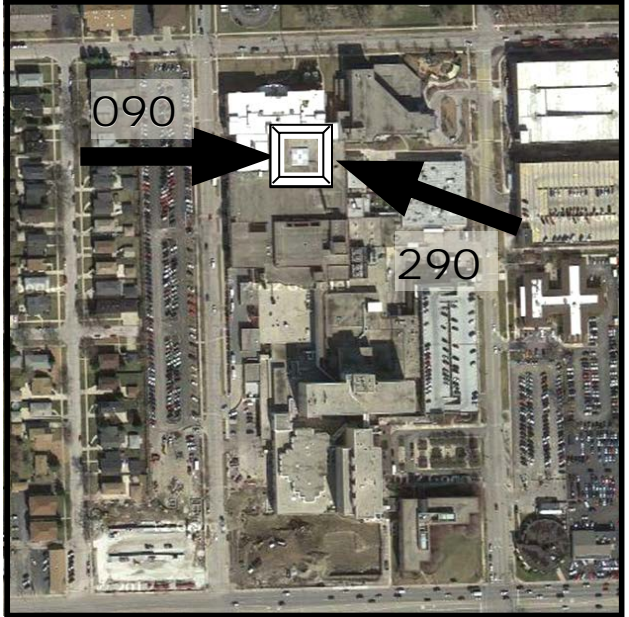
FACILITY

Advocate Christ Medical
Center
4440 W. 95th St.
Oak Lawn, IL 60453

TLOF: 40' X 40'

SPECIAL NOTES:

New phone number



Amended: 2018-04-10

PAGE 106

NAV

Lat: N 38° 34.9
Long: W 89° 56.1

COMM

Freq:
PL:
Ph: 618-641-5858

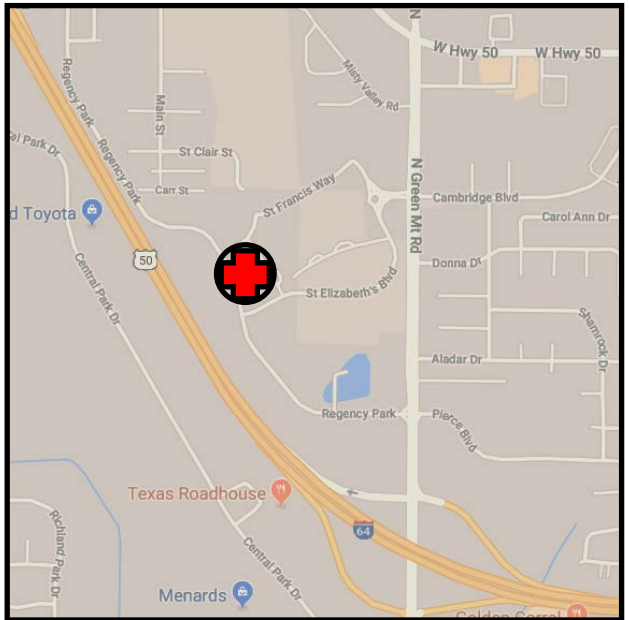
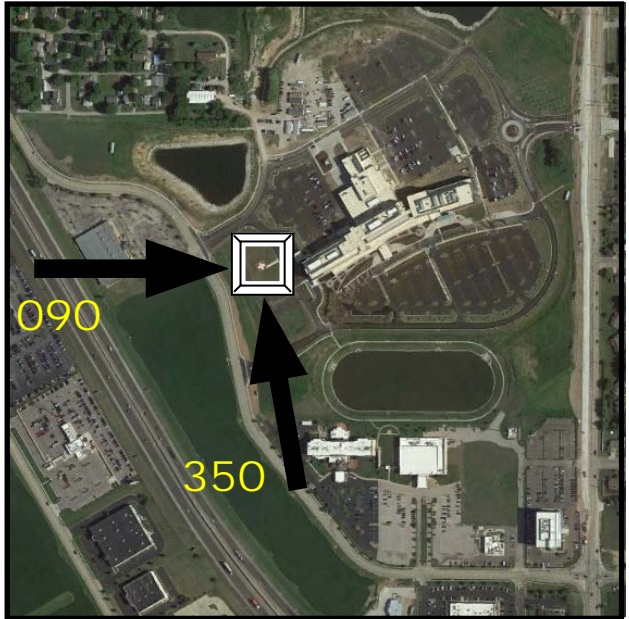
LZ INFO

Elev:
546' Surface
Lighting:
Perimeter
Beacon:
NO
Wind Sock:
Yes – Lighted

FACILITY

HSHS St. Elizabeth's
Hospital
1 St. Elizabeth Blvd
O'Fallon, IL 62269

SPECIAL NOTES:



Amended: 2018-04-10

PAGE 106A

Olney – Richland Memorial Hospital

8LL4

NAV

Lat: N 38° 44.2'
Long: W 88° 04.6'

COMM

Freq: 155.340
PL: 136.5 W:25
Ph: 618-395-7340

LZ INFO

Elev:
485' Surface
Lighting:
Perimeter, Flood
Beacon:
Yes
Wind Sock:
Yes-Lighted

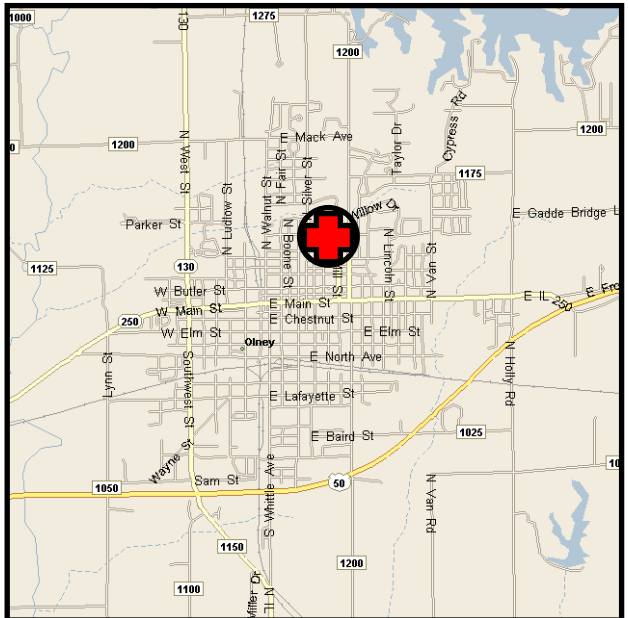
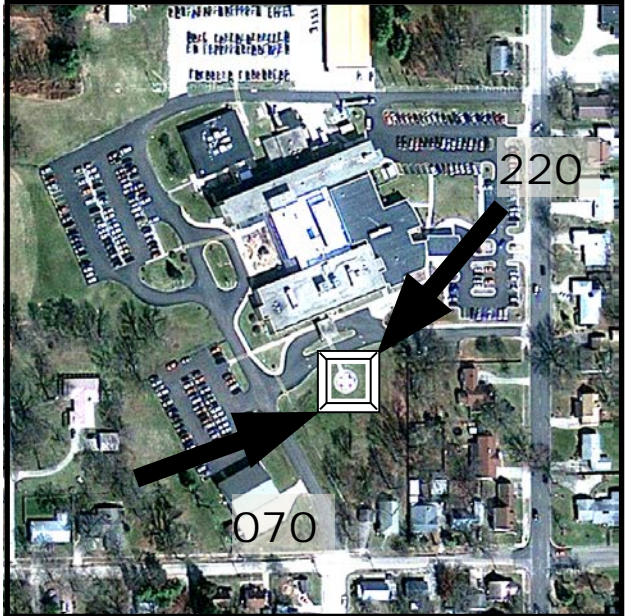
FACILITY

Richland Memorial
Hospital
800 E. Locust
Olney, IL 62450

TLOF: 40' X 40'

SPECIAL NOTES:

Elevation Change



Amended: 2016-04-05

PAGE 107

Olympia Fields – Franciscan St. James Health IS30

NAV

Lat: N 41° 31.4'
Long: W 87° 42.6'

COMM

Freq: 155.340
PL: 179.9 W:35
Ph: 708-747-4000

LZ INFO

Elev: 718' Surface
Lighting: Perimeter, Flood
Beacon: Yes
Wind Sock: Yes – Lighted

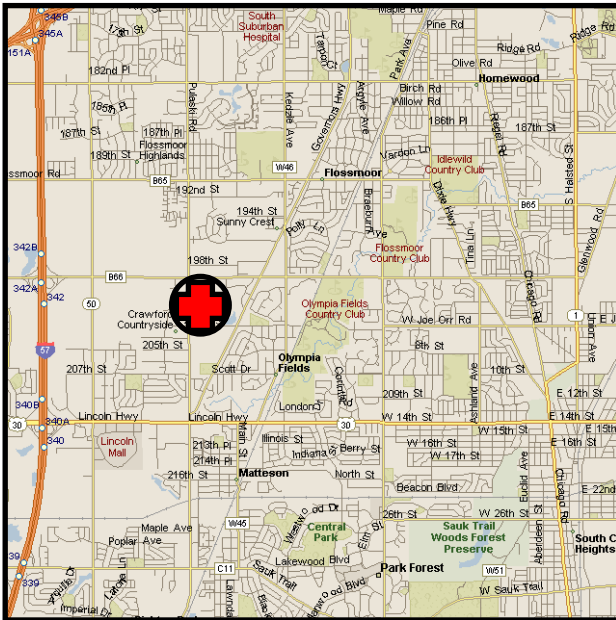
FACILITY

Franciscan St. James Health
20201 S. Crawford Ave.
Olympia Fields, IL 60461

TLOF: 50' X 50'

SPECIAL NOTES:

Name Change



Amended: 2014-04-24

PAGE 108